

CL Full Body Scanner

Body Scanners



WESTMINSTER

GROUP PLC

Product Code: 1090-27

Key Features



Superior high-quality images



Fastest scan time in the industry



Contraband detection software



Static screening



ANSI/HPS N43.17-2009



Wheelchair friendly



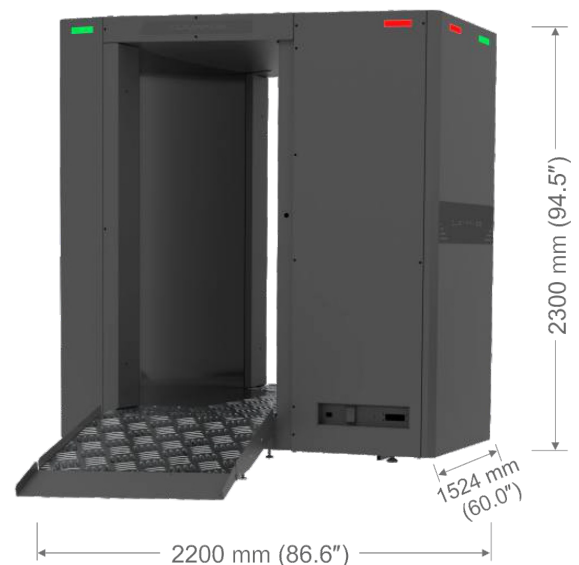
Overview

CLEARPASS Full Body X-Ray Scanner from LINEV Systems answers the calls and demands of Corrections, Transportation and Customs and Border Protection professionals for a compact scanning technology with advanced, high-resolution imaging performance and advanced detection capabilities.

The inspected person in CLEAR PASS remains stationary and the body scanner provides industries fastest image acquisition time of 3 seconds.

This new revolutionary X-Ray inspection system is rugged, fast and non-contact! The unique pass-through design and prison-proven LINEV Systems exclusive automatic threat detection algorithms facilitate the rapid, non-intrusive inspection of people attempting to conceal contraband items on or inside their bodies.

Product Dimensions



Specifications

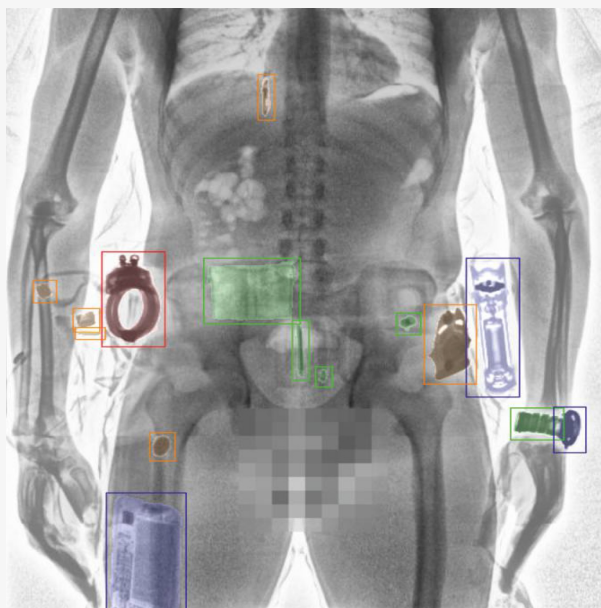
Options

- Low radiation dose (from 0.25 μ Sv), allowing multiple inspections of one person within a year
- Use of A-EYE software – artificial intelligence system for automatic detection and classification of objects located inside and on the human body
- High quality and information content of the image
- High detection capacity
- High throughput
- Integration into existing infrastructure
- Integration with access control systems and databases
- A wide range of image processing algorithms (tools)
- Easy storage and transfer of the received information
- Modular design for quick installation on site

Smart Threat Detection

Automatic intellectual detection and indication of all threats on and inside the human body.

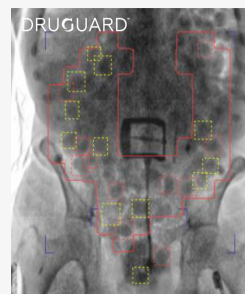
- Elements of clothes
- Electronic devices (PCB inside)
- Dangerous items (weapons, drugs)
- Other items not belonging to the human body



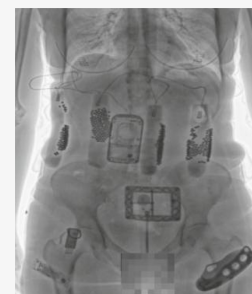
Features

CLEARPASS DMS

- CLEARPASS DMS can unite X-ray body scanners from distant locations into one network keeping track of the total X-ray exposure dose for each inspected person even when the person undergoes a security screening in different locations.
- CLEARPASS DMS synchronizes the information, inspected people's accounts, inspection scan records, and X-ray images between all connected devices.
- CLEARPASS DMS is a set of applications used to run X-ray people screening systems. The system allows operators to inspect people and view their accounts, perform a security screening and view the obtained X-ray images.
- CLEARPASS DMS includes at least three levels of controlled access with the following:
 - An "Operator" level for making scan, creating and filing reports and saving images as required.
 - A "Supervisor" level for supervisory staff to update subject information, create / update operators, review images and file data and monitor all operators' activity and data collected.
 - An "Administrator" level to create / update / delete user group members with different levels of access. view audit logs, view images, save images to external drives and generate reports.



Automatic drugs detection software algorithms for operator assistance and control.



Smart HO images for Increased penetration and resolution.