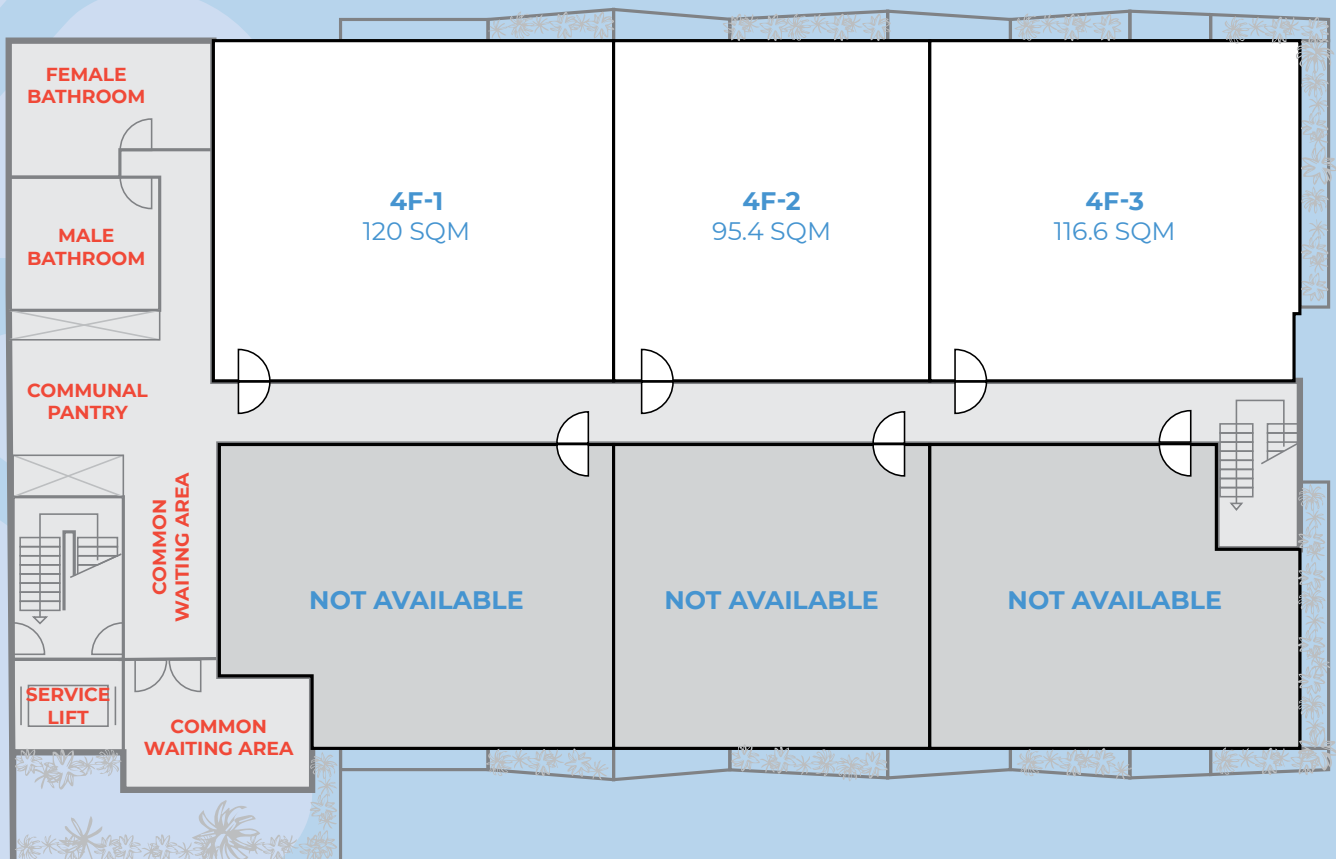


4th FLOOR

| Unit | SQM | Max. Width | Max Length | Balcony |
|------|-------|------------|------------|---------|
| 4F1 | 120 | 11.7 | 10.0 | Yes |
| 4F2 | 95.4 | 9.2 | 10.0 | Yes |
| 4F3 | 116.6 | 11.1 | 10.0 | Yes |



Amenities

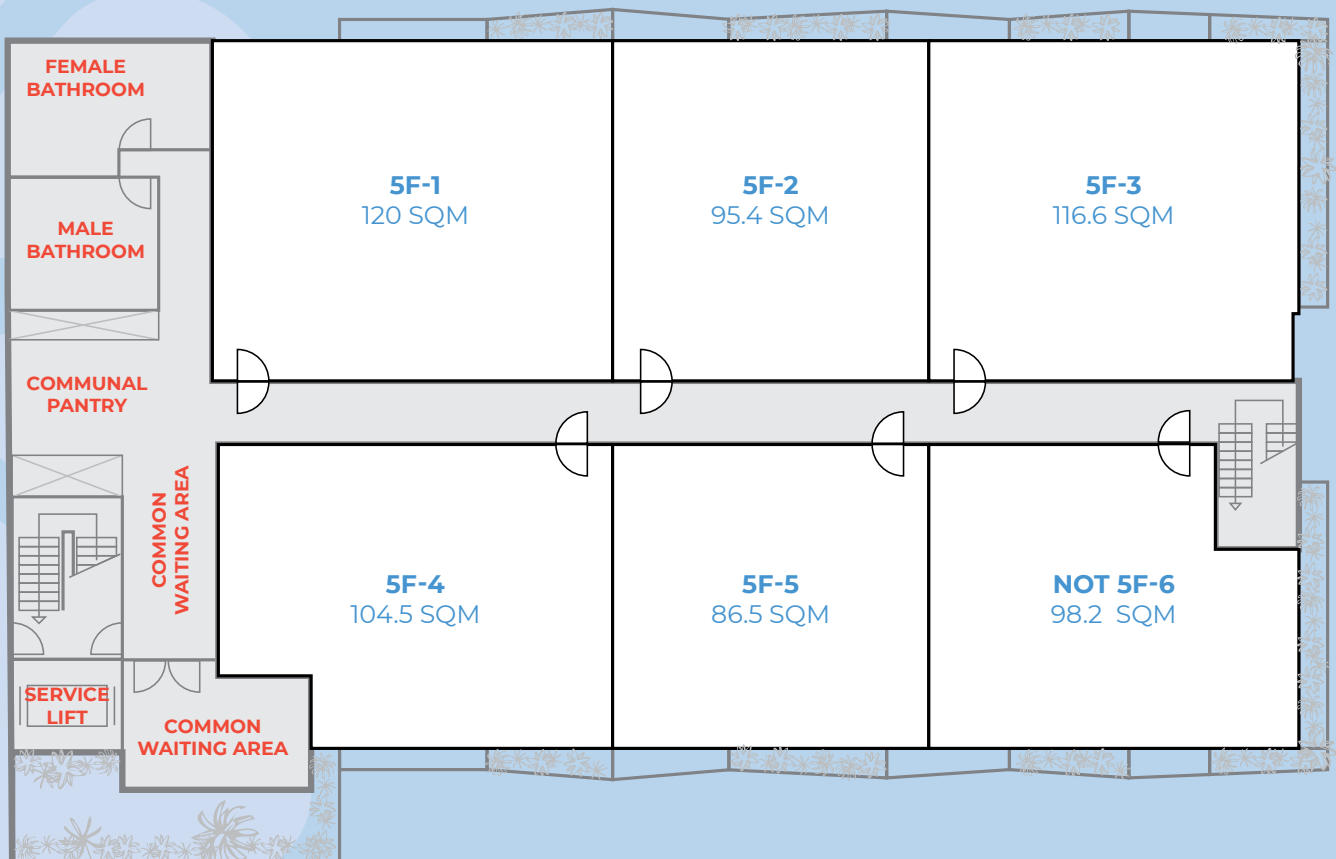
- » Bathrooms
 - » Women: 5
 - » Men: 6
- » Communal pantry, sink, and dining area
- » Waiting area
- » Elevator access
- » 2x Emergency stairs
- » Fire hose on each floor
- » Each office is fit-out ready, and pre-wired with fiber optic internet access. Tenants can select their preferred provider from a list curated by property management.

REMARKS

- » **Electricity:** \$0.22 per kWh (charged based on actual usage; rate is subject to change)
- » **Water:** \$0.50 per m³ (charged based on actual usage; rate is subject to change)
- » **Insurance:** \$0.5 per SQM net per year
- » **Management fee and sinking fund:** \$3 per SQM net per month
- » **Parking fee (per lot/month):** \$30 for a car, \$5 for a motorbike
- » **Leasing deposit:** 3 months' deposit
- » **Fitting out deposit:** \$3,000 (flexible)

5th FLOOR

| Unit | SQM | Max. Width | Max Length | Balcony |
|------|-------|------------|------------|---------|
| 5F1 | 120 | 11.7 | 10.0 | n/a |
| 5F2 | 95.4 | 9.2 | 10.0 | n/a |
| 5F3 | 116.6 | 11.1 | 10.0 | n/a |
| 5F4 | 104.5 | 11.8 | 9.2 | n/a |
| 5F5 | 86.5 | 9.0 | 9.2 | n/a |
| 5F6 | 98.2 | 11.2 | 9.2 | n/a |



Amenities

- » Bathrooms
 - » Women: 5
 - » Men: 6
- » Communal pantry, sink, and dining area
- » Waiting area
- » Elevator access
- » 2x Emergency stairs
- » Fire hose on each floor
- » Each office is fit-out ready, and pre-wired with fiber optic internet access. Tenants can select their preferred provider from a list curated by property management.

REMARKS

- » **Electricity:** \$0.22 per kWh (charged based on actual usage; rate is subject to change)
- » **Water:** \$0.50 per m³ (charged based on actual usage; rate is subject to change)
- » **Insurance:** \$0.5 per SQM net per year
- » **Management fee and sinking fund:** \$3 per SQM net per month
- » **Parking fee (per lot/month):** \$30 for a car, \$5 for a motorbike
- » **Leasing deposit:** 3 months' deposit
- » **Fitting out deposit:** \$3,000 (flexible)