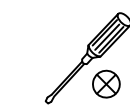


Installation for Instruction

ITEM NO:LY9201-11

Tools you need



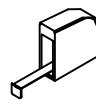
cross-screwdriver



hammer



electric drill



tape measure



caulking gun



Utility knife

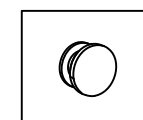
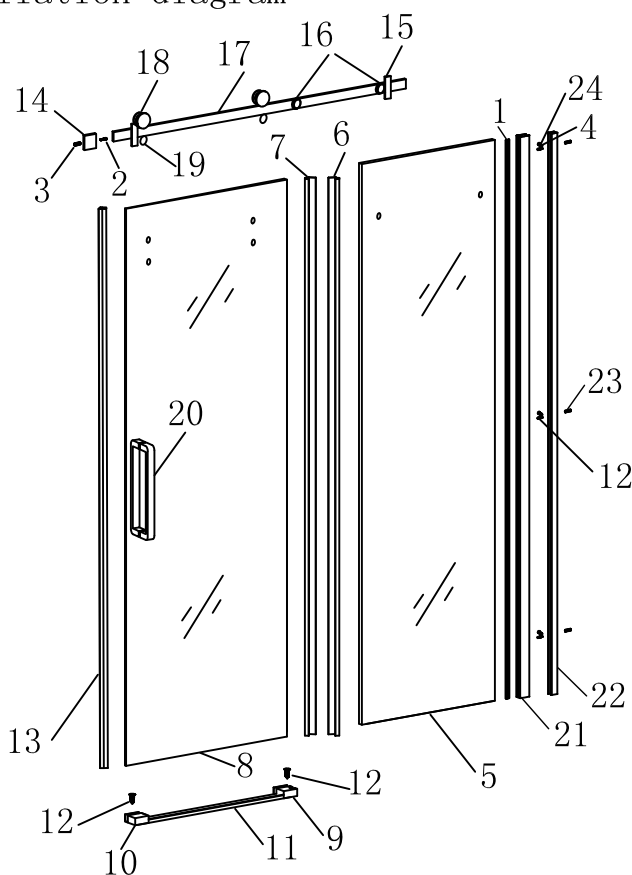


horizontal ruler

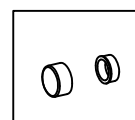


pencil

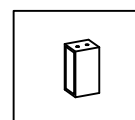
Installation diagram



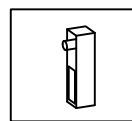
eccentric wheel



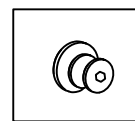
A.B decorative cover



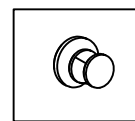
tube



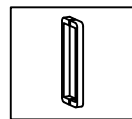
locator



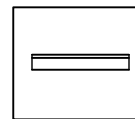
pipe clamp



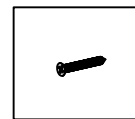
needle



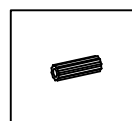
s/s handle



s/s square tube



Screw

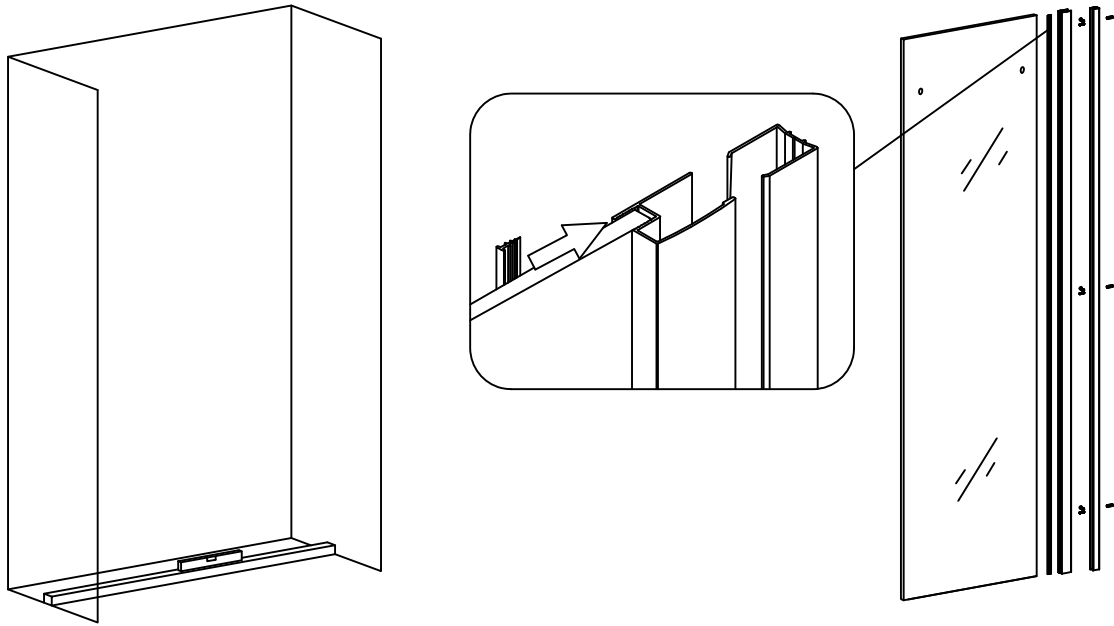


Expansion glue

Spare parts List

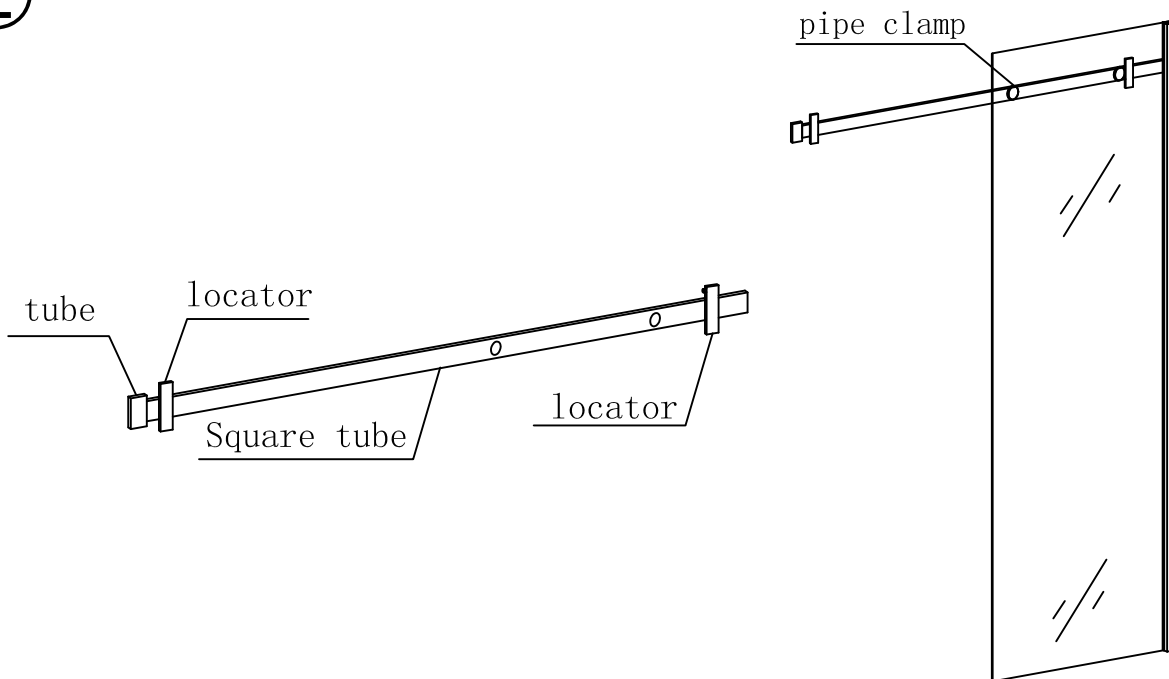
8	movable glass	16	pipe clamp	24	Tapping screw ST4×10
7	Water bar	15	locator	23	Inflatable glue 6mm
6	Water bar	14	tube	22	Aluminum material_Wall stick material
5	fixing glass	13	bubble rubber bar	21	Aluminum material_Column material
4	A.B decorative cover	12	Flat tapping screw ST4×30	20	s/s handle
3	Inflatable glue 8mm	11	Waterproof bar	19	needle
2	Tapping screw ST5×45	10	Left sliding cover	18	eccentric wheel
1	Single side rubber	9	Right sliding cover	17	s/s square tube
No.	Description	No.	Description	No.	Description

①



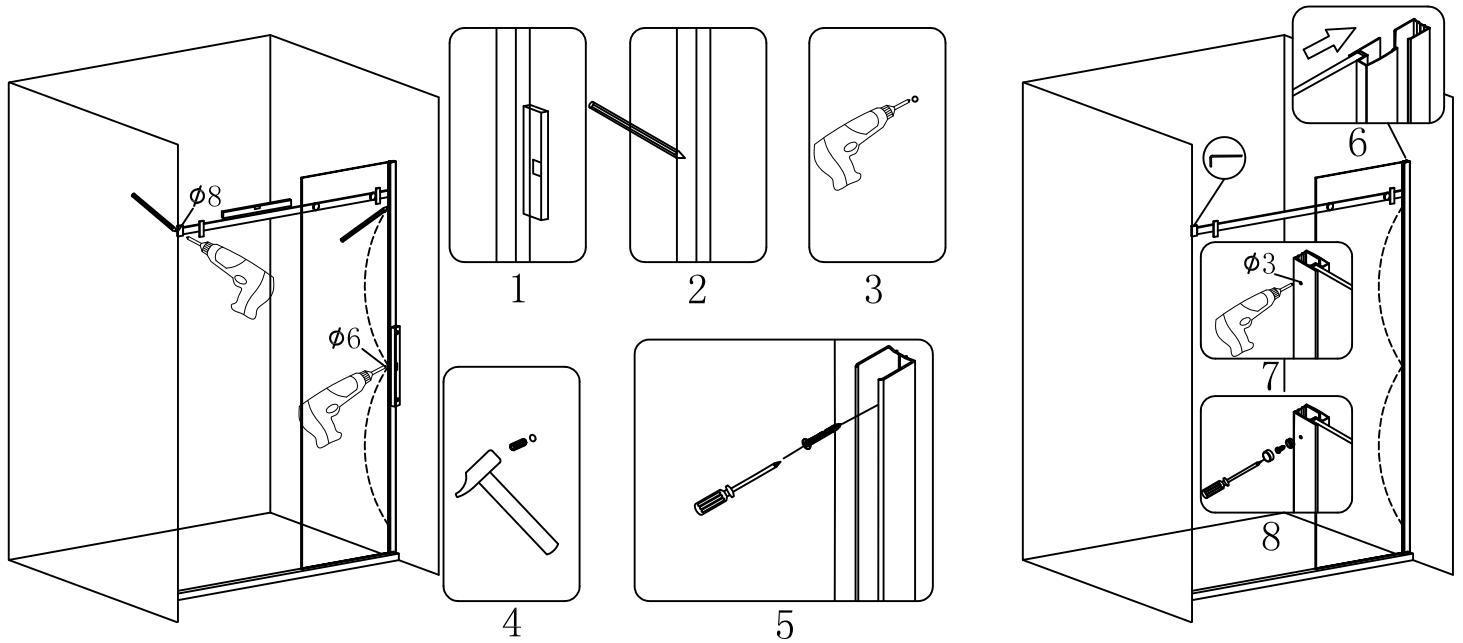
1. Select the installation position, put the base stone or tray to the position and measure it vertically by spirit level.
2. Assemble the accessories and glass. Locate strip seal between fixing glass and profile.

②



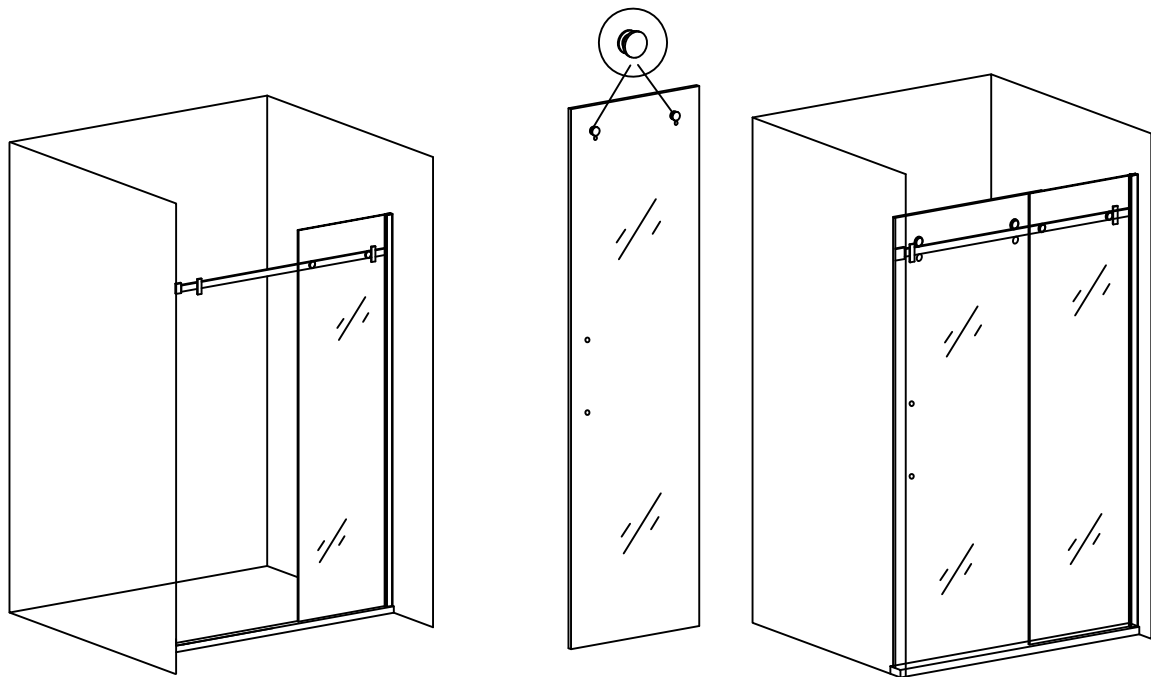
1. Install the rubber rail.

③



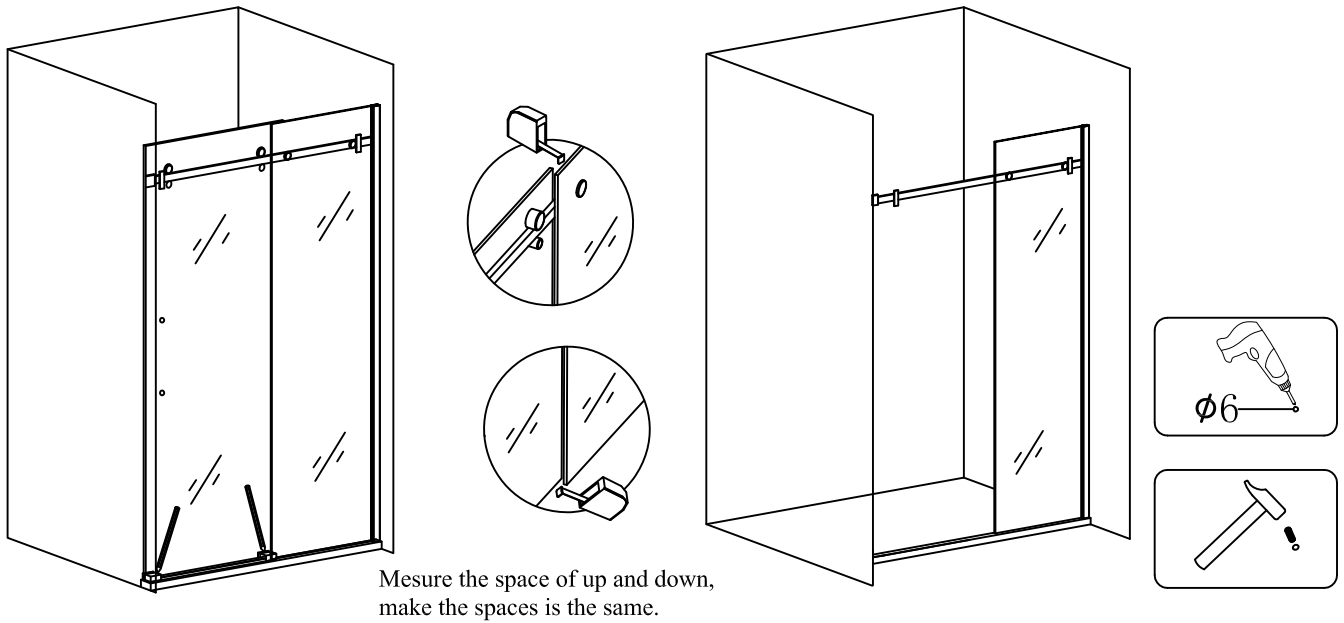
1. Put the fixing glass on the base stone, measure and make the upper rail and fixing glass vertically by spirit level, marked by pencil, then take off the fixing glass.
2. drill a hole by a driller on the marked position, and insert with inflatable rubber.
3. Put the fixing glass which is with rubber rail on the base stone, make it vertically.
Locked the Column material tight with tapping screw ST4×30, and the tube is locked by flat tapping screw ST5×45.

④



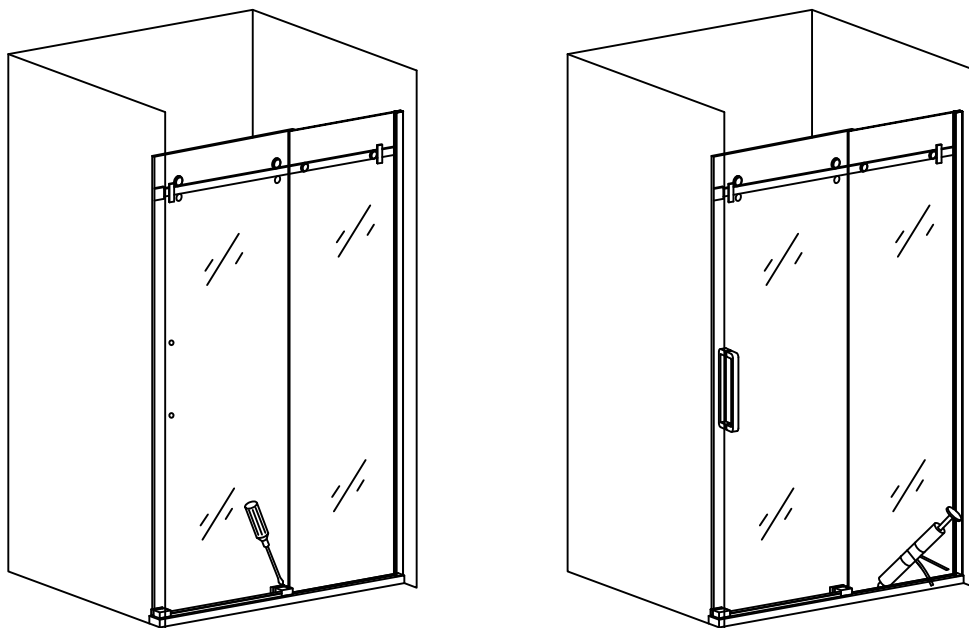
1. Put the fixing glass onto the waterproof bar.
2. Put the movable glass onto the sliding wheel, and install the upper rail.

⑤



1. Put two plastic sliding cover and movable glass onto the base stone. Measure the space between the movable glass and fixing glass, make them vertically. Mark the sliding cover position by pencial, take off movable glass and sliding cover, then drill a hole by a Ø6 driller and insert with inflatable rubber.

⑥



1. Put the waterproof bar on the base stone, locked it tight with tapping screw.
2. Put the movable glass onto the upper rail, adjust the balance of wheel.
Assemble with needle, bubble rubber and waterproof rubber.
3. Sealed with glass glue around the shower room. It can be used in 24 hours.