



P35-A1

The Cargo Bay

PATTERN ADD-ON

THE SMALL CARGO BAY
EDITION: 2.01
© ARABESQUESCISSORS.COM

◆ SMALL EDITION ◆

The Cargo Bay

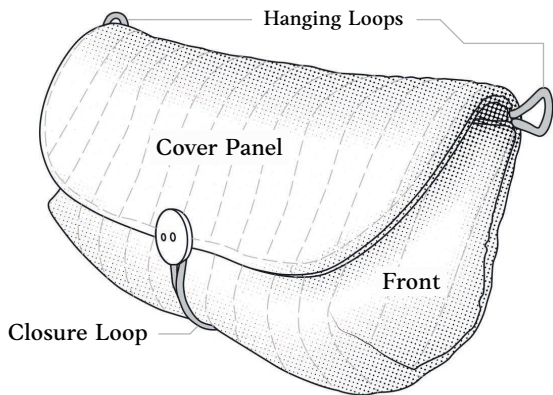
Interchangeable storage pouch for the Sewing Space Station

RELEASED
MAY 2023

HASHTAG
#THECARGOBAY

CATEGORY
ADD-ONS

PROJECT SIZE
7"(L) X 3½"(W) X 1¼"(D)



001 *A Story from Ali*

I designed the **Cargo Bay** to play a small but mighty role in your sewing workflow.

This clever little pouch hangs from your **Space Station** and keeps extra supplies docked exactly where you need them—ready to deploy at a moment's notice.

Think binding clips, bobbins, extra thread colours, and those slightly bulkier essentials that need a home of their own. The flap folds back so everything stays accessible and within reach while you sew.

This is your first glimpse into a sewing space designed to work with you beautifully—where every tool has a place, and your creativity can lift off without the usual clutter and scramble.

Practical, flexible, and delightfully functional, the **Cargo Bay** is the beginning of a more streamlined sewing experience.

Ali x



002 *Materials & Supplies*

FABRIC & INTERFACING

<input type="checkbox"/> Fabric 1	Exterior	Fat 1/8
<input type="checkbox"/> Fabric 2	Lining	Fat 1/8
<input type="checkbox"/> Interfacing	Medium weight woven fusible (e.g. Pellon SF101)	25" x 10"
<input type="checkbox"/> Fleece	Fusible fleece (e.g. Pellon 987F)	20" x 10"

NOTIONS & LITTLE BITS

<input type="checkbox"/> 2mm round elastic	9" (23cm) long
<input type="checkbox"/> [1] Button	3/8" (10mm) wide

ALSO HELPFUL

<input type="checkbox"/> Pins	<input type="checkbox"/> Fabric safe pen
<input type="checkbox"/> Binding clips	<input type="checkbox"/> Stiletto
<input type="checkbox"/> Basting spray	

Find Your Supplies

Visit the link below to find many of my recommended tools and materials online.

Find Your Supplies
bit.ly/recommended-supplies



Video Tutorial

Click the button below (yes, in this PDF) or copy and paste the link into your browser to sew along with a step-by-step tutorial of the Cargo Bay.

Sew Along with Ali
bit.ly/small-cargo-bay



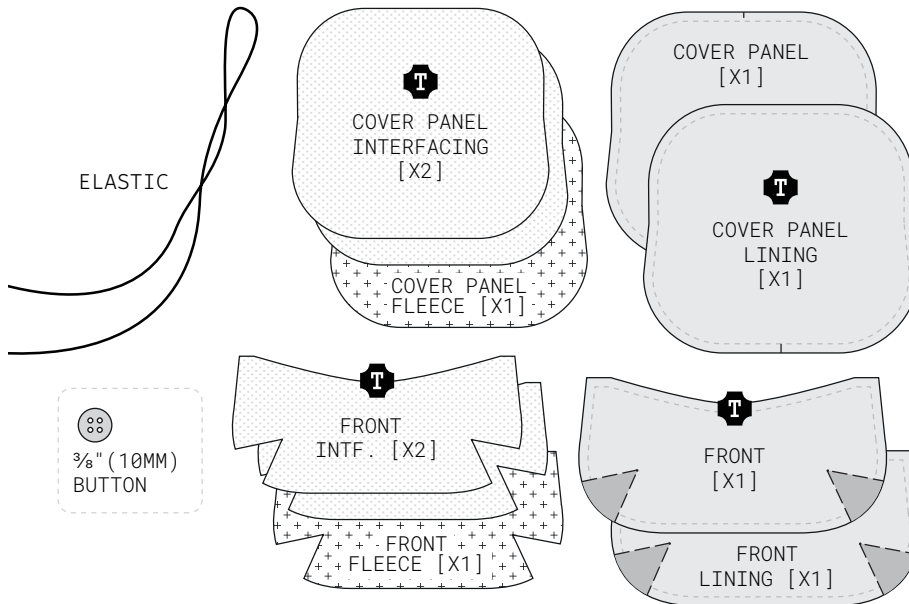
PROJECT PIECES			FABRIC	INTERFACING	FUSIBLE FLEECE
A	COVER PANEL	T	[1] 10" x 10"	[1] 9½" x 9½"	[1] 9½" x 9½"
B	COVER PANEL LINING	T	[1] 10" x 10"	[1] 9½" x 9½"	
C	FRONT	T	[1] 11½" x 6½"	[1] 11" x 5½"	[1] 11" x 5½"
D	FRONT LINING	T	[1] 11½" x 6½"	[1] 11" x 5½"	
E	HANGING LOOPS		[2] 2" ELASTIC		
F	CLOSURE LOOP		[1] 3½" ELASTIC		

CUTTING NOTES

- You can trace the templates directly onto larger pieces of material instead of cutting the pieces individually from the cutting table

Exploded View

TRACE PIECES MARKED WITH **T** FROM THE PRINTABLE TEMPLATES ON PG 7-9



BEFORE YOU BEGIN

- Please read through *entire pattern* before beginning
- Press fabric before beginning
- Seam allowances are ¼" (6mm) wide unless stated
- Backstitch the beginning and end of all seams

ACRONYMS

- RST - RIGHT SIDES TOGETHER
- RS - RIGHT SIDE
- RSO - RIGHT SIDE OUT
- WS - WRONG SIDE

DIAGRAM KEY

MACHINE STITCHING -----

TOPSTITCHING - - - - -

BASTING

RS WS FABRIC FLEECE

INTF. A

● STEP ACTIONS MARKED IN RED

PIECE LABEL

Step 1

Cutting out, fusing & quilting

Check that your printer is set to 'no scaling', and then check that the scale square measures exactly **1" x 1" square** when printed. Print out all templates beginning on **Page 7**.

Pro tip "Keep track of all your pieces and avoid confusion, by stacking the corresponding fabric & interfacings together and clip the template to the front."

We're going to start by creating panels that will be quilted, then cut to size using the templates for the **Cover Panel** and **Front**. Follow the cutting chart above, cut out the **Cover Panel** fabric, interfacing and fleece to the sizes noted.

Then cut the **Front** fabric, interfacing and fleece to the sizes noted. Fuse the interfacing to the WS of the fabric followed by the Fleece.

Quilt the **Cover Panel** and **Front** pieces as desired. I ruled a 1/2" grid diagonally across each piece and stitched a combination of machine and hand quilting through the layers.

Trace and cut out the templates for the **Cover Panel** and **Front** onto these quilted panels. Transfer the dart markings and mark **midpoints**, **centre fronts**, and **centre backs** on relevant pieces.

Using the templates, trace and cut out the **Cover Panel Lining** and **Front Lining** from fabric and interfacing.

Fuse the Interfacing to WS of the **Cover Panel Lining** and **Front Lining**, centering it within the seam allowance. Transfer the dart markings and mark **midpoints**, **centre fronts**, and **centre backs** allowance.

STEP 1 PROGRESS

- Print and cut out templates
- Make and quilt **Cover Panel & Front**
- Trace templates onto fabric, interfacing, fleece, and cut out
- Fuse interfacing + fleece

Step 2

Preparing the Cover Panel & Front

Take the 3 1/2" length of elastic or ribbon for the **Closure Loop** and fold in half with ends together. Place it onto the RS of the **centre back** of the outer **Cover Panel** aligning the ends with the raw edges. Baste in place.

Take each length of elastic for the **Hanging Loops** and fold in half with ends together. Place onto the RS of the **midpoints** of the **Cover Panel** aligning the ends with the raw edges. Baste in place. **Fig. 2.**

Take the **Front**, fold RST, aligning the raw edges of one curve, bringing the arms of the dart together. Stitch along the dart lines from the raw edges to the point, remembering to backstitch. Repeat this to stitch the second dart, then stitch both darts on the **Front Lining**. **Fig. 3.**

Baste **Front** darts away from **centre front** and **Lining** darts *towards* **centre front**.

Place the **Front** and the **Front Lining** RST, lining up the top raw edges and clipping them together.

Sew together along this top edge.

Trim the seam allowance to 1/8", turn RSO, then press seam edge well. **Fig. 4.**

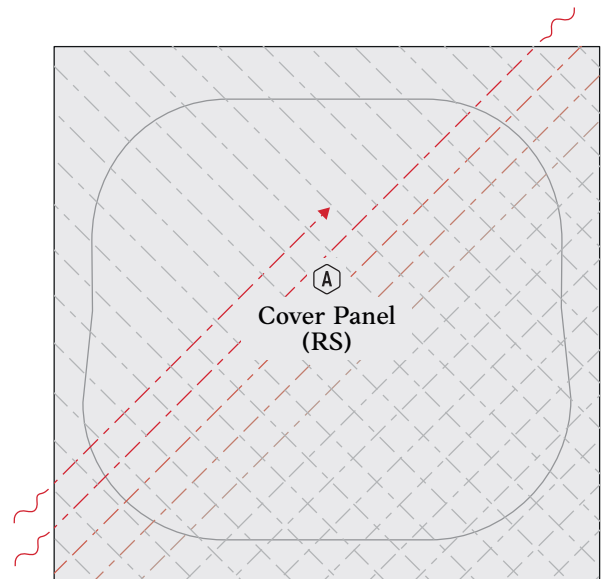


Fig. 1.

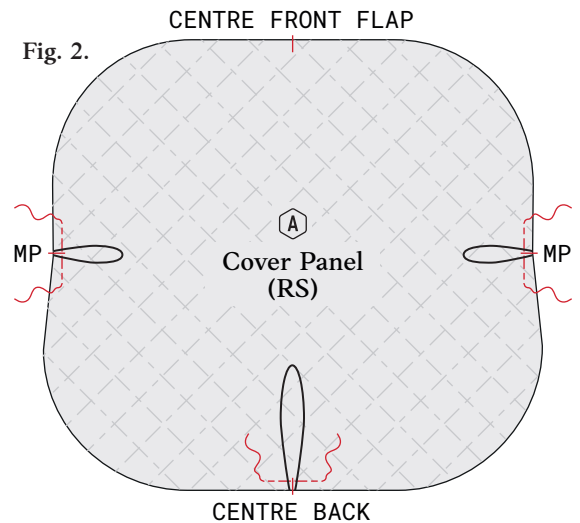


Fig. 2.

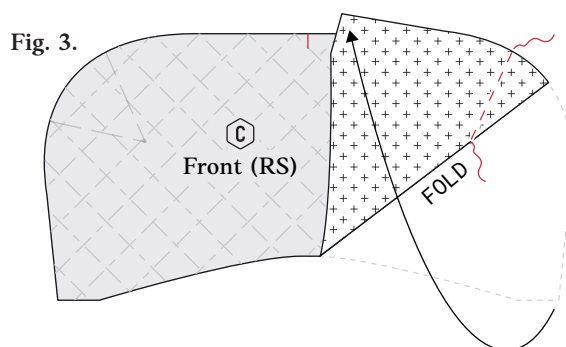


Fig. 3.

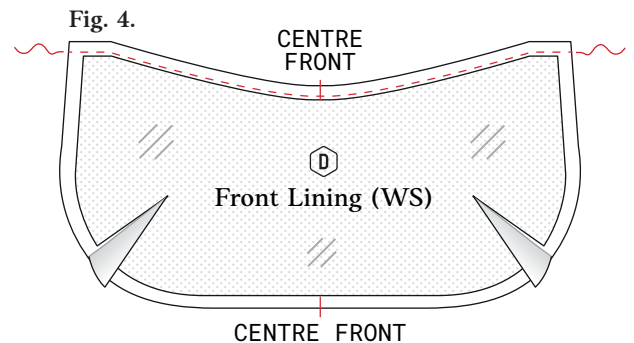


Fig. 4.

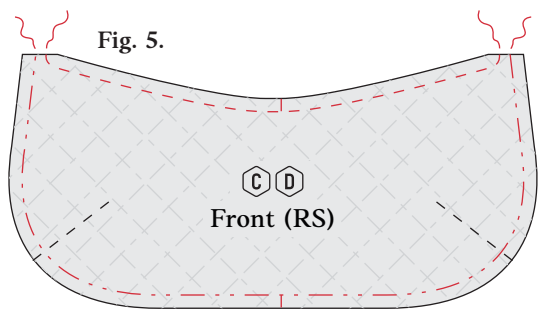


Fig. 5.

Topstitch along the edge. Baste the outer **Front** and **Lining** together along the raw edges, aligning the darts and curves. **Fig. 5.**

STEP 2 PROGRESS

- Attach **Hanging & Closure Loops**
- Sew **Front & Lining**
- Sew darts
- Topstitch **Front** edge

Step 3

Joining the Cover Panel & Front

Lay the outer **Cover Panel** RSU. Place the **Front** on top with the **Lining** outermost, aligning the front **centre front** with the **centre back**, and aligning curves and raw edges. The top edges of the **Front** should align with each **midpoint**.

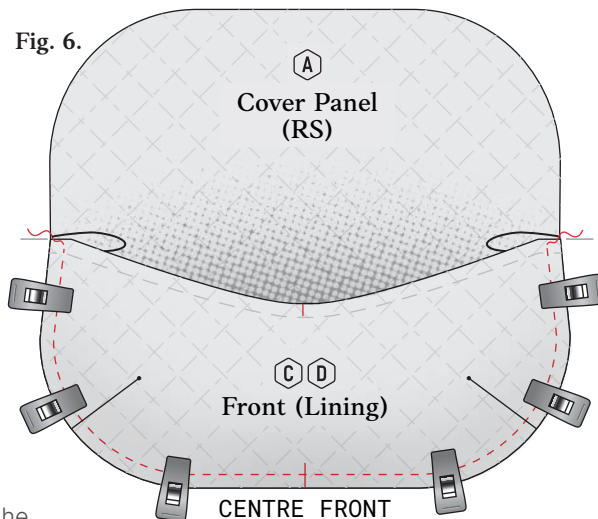


Fig. 6.

Clip edges together and stitch the **Front** to the **Cover Panel**. **Fig. 6.**

Place the **Cover Panel Lining** over the combined **Cover Panel + Front**, RST, enclosing the **Front** section.

Align the raw edges, **midpoints**, **centre fronts**, and **centre backs**. Clip edges together and sew, leaving a 2½" turning opening across the bottom edge of the **centre back**. **Fig. 7.**

Trim seams down to ¼" (except across the turning opening) and turn RSO through the opening. Push all the edges out and tuck the raw edges back inside the opening, manipulating to achieve a smooth curves on the seams.

Press edges well. Sew up the opening in the **Lining** with ladder stitch. Topstitch along the front flap edge.

Sew a **Button** to the RS of the flap top edge **centre front Cover Panel**, then close the pouch by looping the bottom loop of elastic over the **Button**. **Fig. 8.**

STEP 3 PROGRESS

- Stitch **Cover Panel Lining** to the outer **Cover Panel**
- Turn RSO through opening
- Topstitch flap edge
- Sew **Button** to front flap

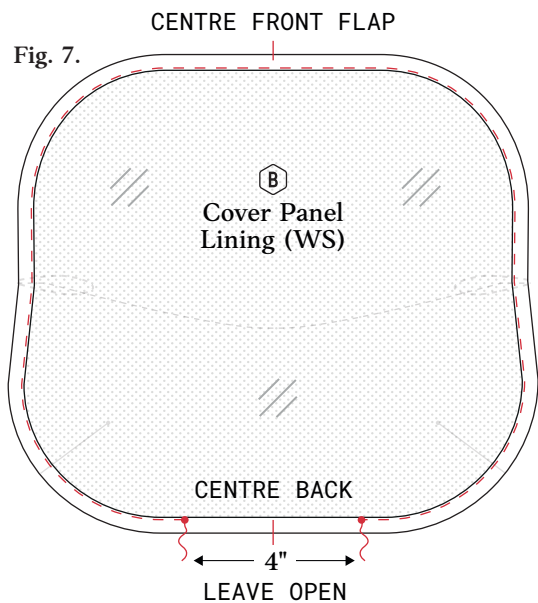


Fig. 7.

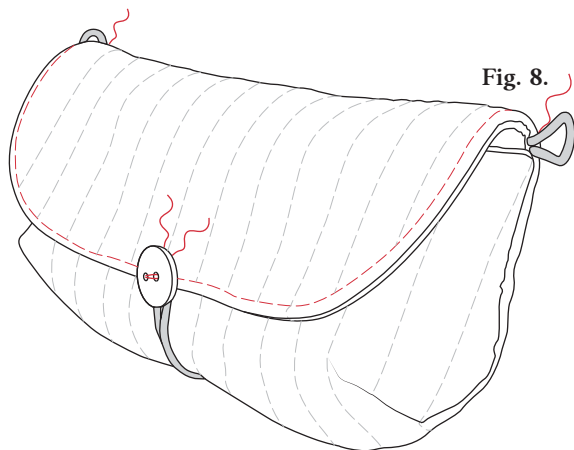


Fig. 8.

Step 4

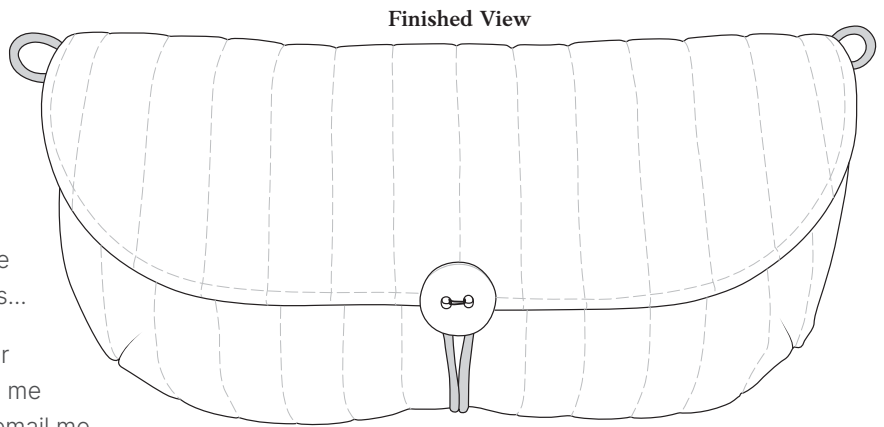
Share Your Creation!

Your **Cargo Bay** is complete!

If you have made it this far, *congratulations!*

Go and fill it with whatever you like—your favourite notions, reading glasses, or even a stash of M&M's...

I'd love to see your finished project! Celebrate your by sharing to socials using **#thecargobay** and tag me **@arabesquescissors**! Alternatively feel free to email me photos directly at ali@arabesque-scissors.com.



Discover the next adventure

The **Cargo Bay** is a practical pouch designed for something bigger—to dock neatly to the **Front Tool Panel** of the **Sewing Space Station** and give you an interchangeable system to support your current project.

The **Space Station** is portable sewing mat, designed to help maintain your creative momentum no matter where you may sew.

With built in pocket storage for tools, fabric, and more, and a front tool panel that keeps your tools within arms length — this universal station will make it far easier to come back and keep sewing without needing to gather everything each time.

This kind of organisational flow is something we continue to build together inside Sewflow to bring order and calm to your sewing space.

If you'd like to sew the **Space Station** along with me, you can purchase the pattern on my website, or join **Sewflow** to get free access.

Buy Space Station Pattern →
bit.ly/space-station-pattern

Sew in Sewflow →
bit.ly/sewflow

Thank you for supporting my small business — it means the world to me!



Hi, I'm Ali!

I'm an Australian sewist and pattern designer with a love for family and creativity.

I'm on a mission to help you streamline your sewing workflow, craft a sewing sanctuary and experience the delight of stress-free sewing.



"I just want to share my love for the Sewing Space Station! When I made it I didn't know that it would be my favorite sewing item.

Now I really understand the brilliance! Everything I need when sewing is within reach, and when I need the room for guests, I just put everything away in seconds.

I just love it and highly recommend you all make it!"

— **Eva N.** | ★★★★★



SMALL CARGO BAY

Printable Templates

PRINTING AT 100% SCALE

Ensure the scale square measures precisely 1" x 1".

If you can't get this to measure accurately, or have other printing issues, please visit the link below:

WWW.ARABESQUE-SCISSORS.COM/PRINT-HELP

COMPONENT LABEL

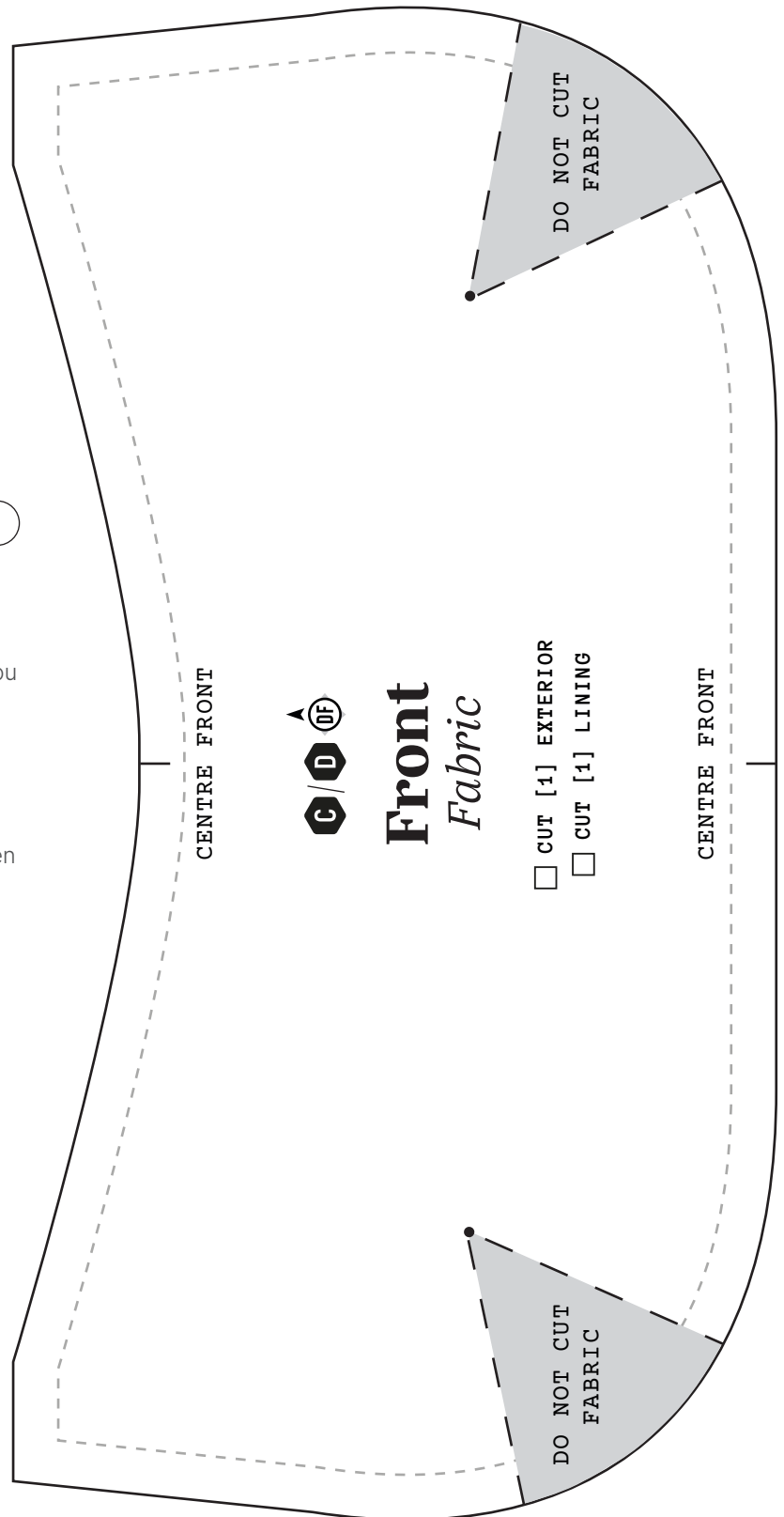
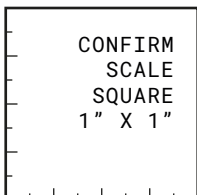
Use these letters to keep track of each piece as you follow the instructions throughout the pattern.

FABRIC ORIENTATION MARKER

Ensure the arrow on this icon aligns to the top when using fabric with a directional pattern.

MARK AS YOU GO

Check off the boxes on each template piece after you've cut them out of the material to keep track of everything.



COPYRIGHT & PERMISSIONS

This pattern may not be replicated or transmitted in any form without express permission.
© Arabesque Scissors 2026. All rights reserved.



A

Cover Panel

Interfacing

CUT [1] INTERFACING

© ARABESQUE-SCISSORS.COM

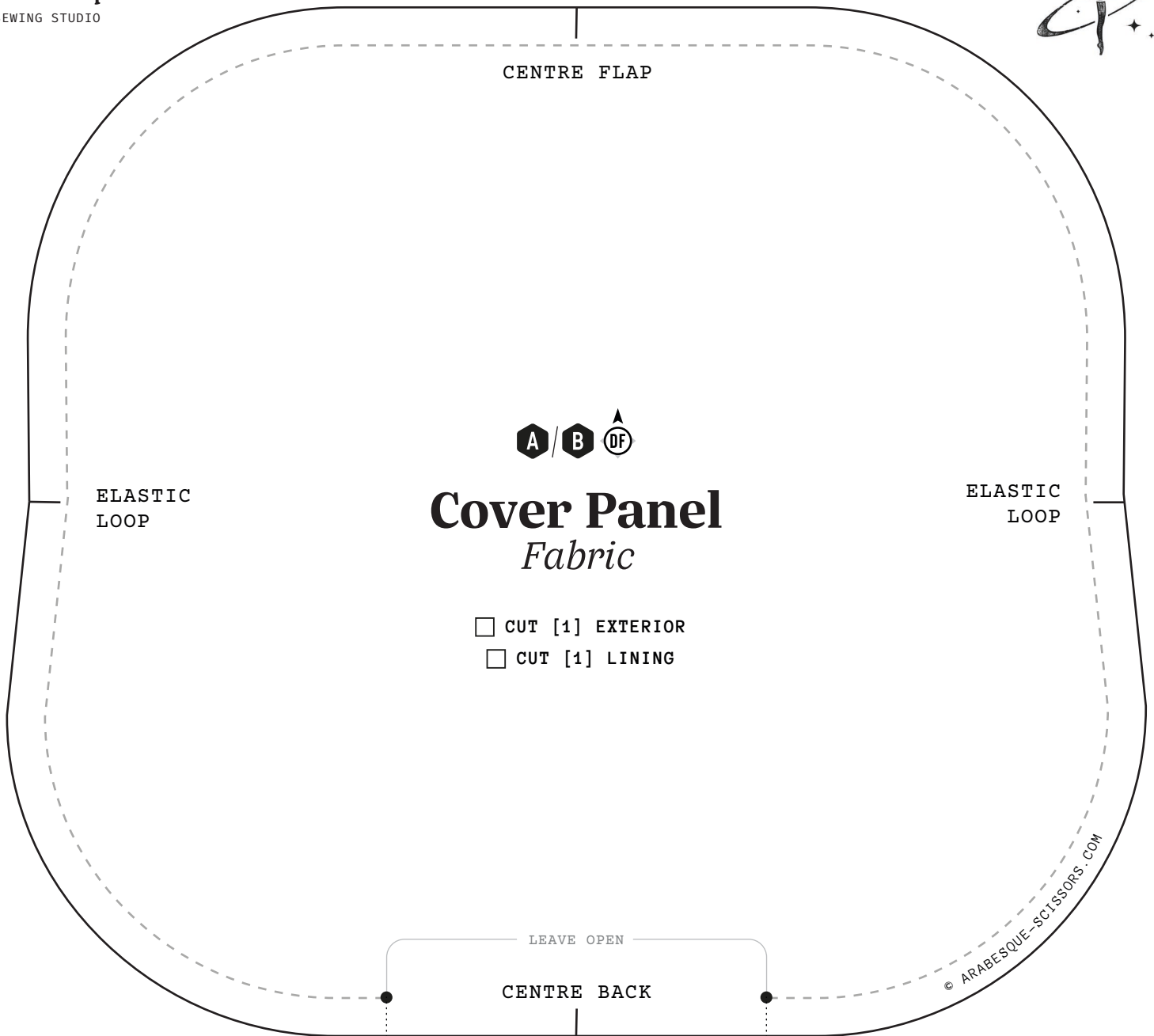
C

Front

Interfacing

CUT [1] INTFERACING

© ARABESQUE-SCISSORS.COM



NEXT MISSION

The Sewing Space Station

Discover the ultimate sewing organiser, for sewing on your dining table, or regular stitching expeditions across the universe. Keep your sewing essentials together so you can quickly let your creativity flow.

Buy Pattern

bit.ly/space-station-pattern



Sew in Sewflow

bit.ly/sewflow

