

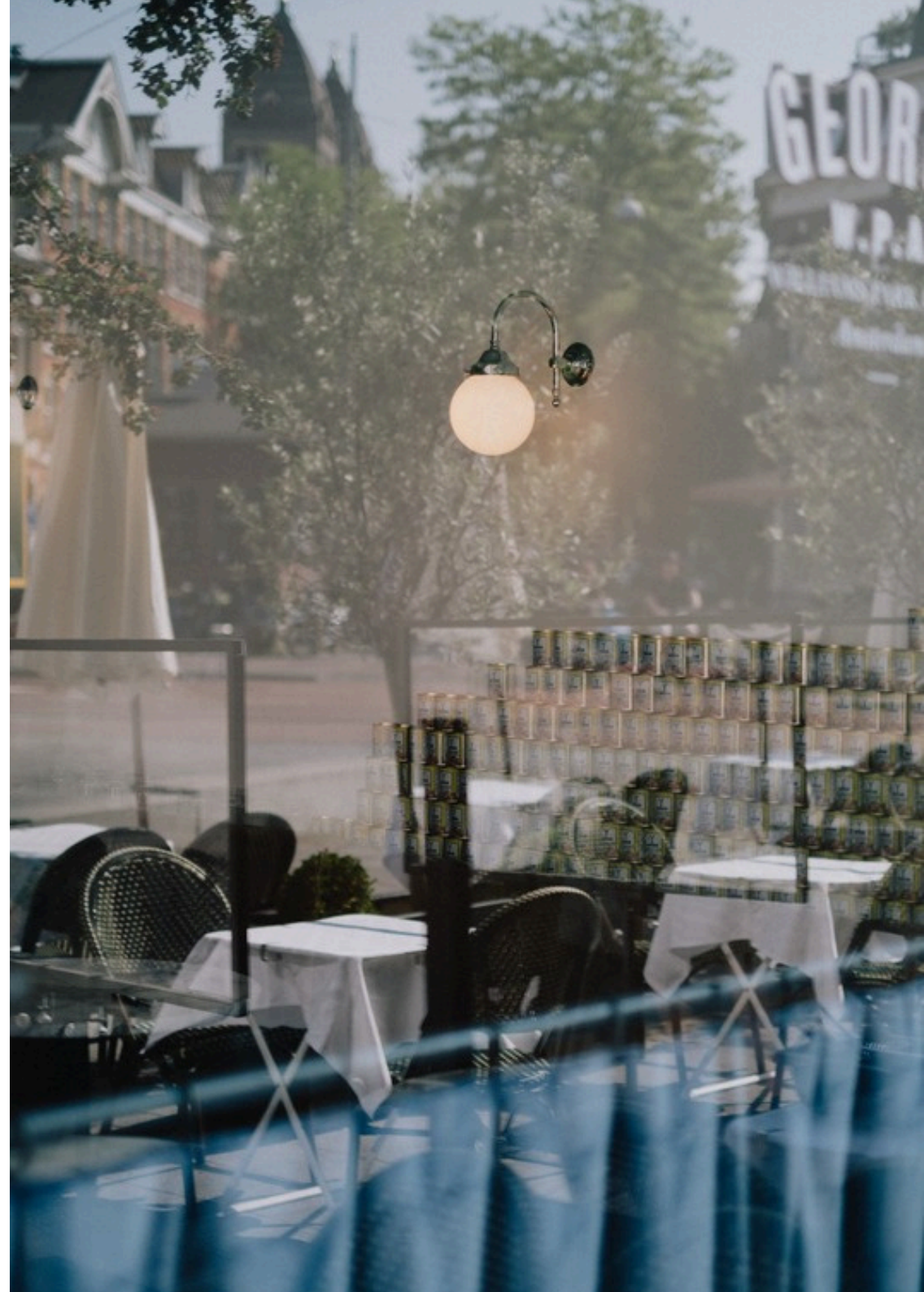
YOUR NEXT EVENT

at

GEORGE
W.P.A.

WILLIAMS PARK AVENUE

Amsterdam





THIS IS US

Nestled in the heart of the Amsterdam Upper South side, you can find us: George W.P.A. boasting one the most beautiful and fashionable terraces in town, combining the elegance of a fancy restaurant with the casual vibe of a neighbourhood get-together.

We are located on an incredibly charming street, just around the corner of the famous Vondelpark and the Amsterdam museum district. A warm place with sexy vibes where locals, expats, families, loved ones and friends come together to sip a glass of wine, watch people go by and enjoy one of our signature dishes.

Our menu is a love affair between French and New York cuisine, our dishes range from our signature pizza tuna to a juicy Bis- tro burger, and an outstanding choice of vegetarian and vegan dishes.

George W.P.A. basically serves anything your food-loving heart could ever dream up – all day every day.

INDEX

THIS IS US	2
LET'S DO LUNCH OR DINNER	4
OUR GROUP MENUS	5
WHAT WOULD YOU LIKE TO EAT?	6
BITES & DRINKS	7
PAYMENT TERMS & CONDITIONS	9
FROM A TO US	10



All our rates include VAT and are valid until June 2025. The Uniform Terms & Conditions for the Hotel and Catering Industry (UVH) apply. We work with seasonal products, so the menu may differ per season.

LET'S DO LUNCH OR DINNER OUR GROUP MENUS

TO GET YOU STARTED

To kick off your dining experience and ensure a delightful start for you and your guests, we offer a Gorgeous range of dishes.

Oysri nr.3 Irish, 4½
w/ lemon & Mignonette

Oysri Bloody Mary, 5
w/ tomato juice, vodka, Tabasco & celery

French baguette, 6½
w/ salted butter

Olives, 5½
w/ anchovy

Nuts, 5
roasted & toasted

All our rates include VAT and are valid until June 2025. The Uniform Terms & Conditions for the Hotel and Catering Industry (UVH) apply. We work with seasonal products, so the menu may differ per season.

Our menus are both available for lunch and dinner.
All our dishes can be amended for dietary requirements and preferences, including vegetarian and vegan options.
Our creative chef is happy to produce something delicious. Up to 14 people we offer the possibility to enjoy our a la carte menu, in between 14 - 20 people we offer our group menus, and for 20+ people we offer our group menus with choices upfront. We can also offer a set menu based on our group menus.



OUR GROUP MENUS

MENU SANTÉ

2 courses: 41½

3 courses: 50

excl. sides

STARTER

Carpaccio *w/ rocket & Parmesan*

or

Burrata *w/ Heirloom tomatoes & basil*

MAIN

Steak *w/ herb butter*

or

Sliptong *w/ remoulade sauce*

or

Truffle Ravioli

DESSERT

Crème brûlée

or

Chocolate gâteau chaud *w/ vanilla ice cream*

or

Tarte Tartin *w/ vanilla ice cream*

MENU SOIRÉE

2 courses: 47

3 courses: 55

excl. sides

STARTER

Tuna avocado tartare

or

Steak tartare

or

Burrata *w/ Heirloom tomatoes & basil*

MAIN

Grilled green asparagus *w/ poached egg, black truffle, Hollandaise sauce & nuts*

or

Blackened tuna *w/ soy foam*

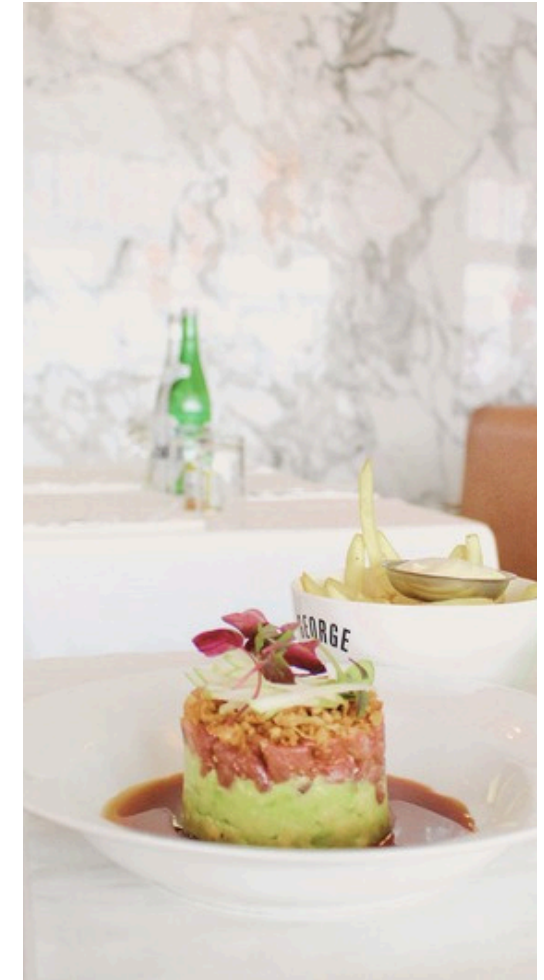
or

Grilled chicken *(½ boneless chicken)*

Tournedos *w/ pepper sauce +8*

DESSERT

Grand dessert



All our rates include VAT and are valid until June 2025. The Uniform Terms & Conditions for the Hotel and Catering Industry (UVH) apply. We work with seasonal products, so the menu may differ per season.

WHAT WOULD YOU LIKE TO EAT?



PICK YOUR SIDE

Our menus are served without side dishes, allowing you to personalize your experience. For an additional 7,- per dish you can select one of the side dishes from the following options:

French fries

Mashed potatoes

Green salad
w/ walnuts & mustard dressing

Spinach sauteed
w/ garlic

Rocket Parmesan salad
w/ Balsamico

Haricot Verts

ADD AN EXTRA COURSE

Add one of the following dishes to your menu:

Truffle ravioli, 15
3pcs.

Bisque, 16½
w/ Dutch shrimps, Gruyère & rouille

George 'Pizza Tuna', 19

Half a lobster, cold, 30
w/ homemade mayonnaise

Half a lobster Thermidor, 32½
w/ creamy sauce of mustard, cognac & Gruyère

Or... add on a planche de fromage, 17
a nice addition in between the main course and dessert



KEEP ON SNACKIN'

No empty table, 9½

+/- 4 pers. olives, roasted nuts & salty cheese sticks

French baguette, 6½

w/ salted butter

Springrolls, 8

8 pcs.

Cheese croquettes, 10

2 pcs. w/ toast

Shrimp croquettes, 12½

2 pcs. w/ toast

Tuna Tartare, 6½ a piece

w/ avocado & crisps

Petit George Bistro burger, 8½ a piece

w/ signature sauce

Or... go all out with a plateau

Plateau crostini, 40

30pcs. w/ burrata, steak tartare & salmon

Plateau snack, 32

*22pcs. w/ bitterballen, spring rolls
& cheese croquettes*

DRINKS

DRINKS BASED ON CONSUMPTION

At your event, drinks can be charged based on actual consumption, ensuring flexibility and transparency. If you have a preference for specific wines from our wine menu, simply let us know at least 2 weeks in advance, and we'll ensure they're served to your guests.

DINNER DRINKING ARRANGEMENT | 27½

With your lunch or dinner, we can offer a set drinks menu. This consists of: ½ bottle of red or white house wine, ½ bottle of water, and a cup of coffee or tea. Not a wine lover? You can also order beer and soft drinks.

BOUNDLESS BAR

A great option for your party would be to choose for an open bar – the boundless bar, as we like to call it. For a set amount of time and a fixed rate, your guests will enjoy unlimited beverages, depending on the assortment you choose. This way of serving your guests is ideal for groups of 30 or more. We have the following options:

DUTCH OPEN BAR

Pilsener, house wine, soft drinks, mineral water, jenever and Lillet.

Price for the first 2 hours: 35,- p.p.

Price for next 2 hours: 12,- p.p. per hour

Every next hour: 8,- p.p.

PREMIUM OPEN BAR

Pilsener, house wine, soft drinks, mineral water, jenever, Lillet, Campari and house pours rum, gin, vodka and whiskey.

Price for the first 2 hours: 45,- p.p.

Price for next 2 hours: 17,- p.p. per hour

Every next hour: 13,- p.p.



PAYMENT TERMS & CONDITIONS

Upon acceptance of the quotation, we may request a credit card number for guaranteed purposes. Costs are typically settled on the same evening and can be paid conveniently by either debit or credit card unless we previously discussed an alternative invoicing arrangement. For group reservations, we require a deposit of €15,- per person.

For further details and additional terms and conditions, please refer to the Uniform Conditions of the Hotel and Catering Industry (UVH), established by Koninklijke Horeca Nederland. These conditions apply to all George restaurants, including Gustavino Restaurant & Vinoteca, Herengracht Restaurant & Bar, and d'Vijff Vlieghen, which are affiliated with UVH.

You are welcome to request these conditions at any time.



FROM A TO US

HOW TO GET TO GEORGE W.P.A.?

Your comfort starts before you walk through our doors.

Arriving by car, metro, tram or bus? No problem!

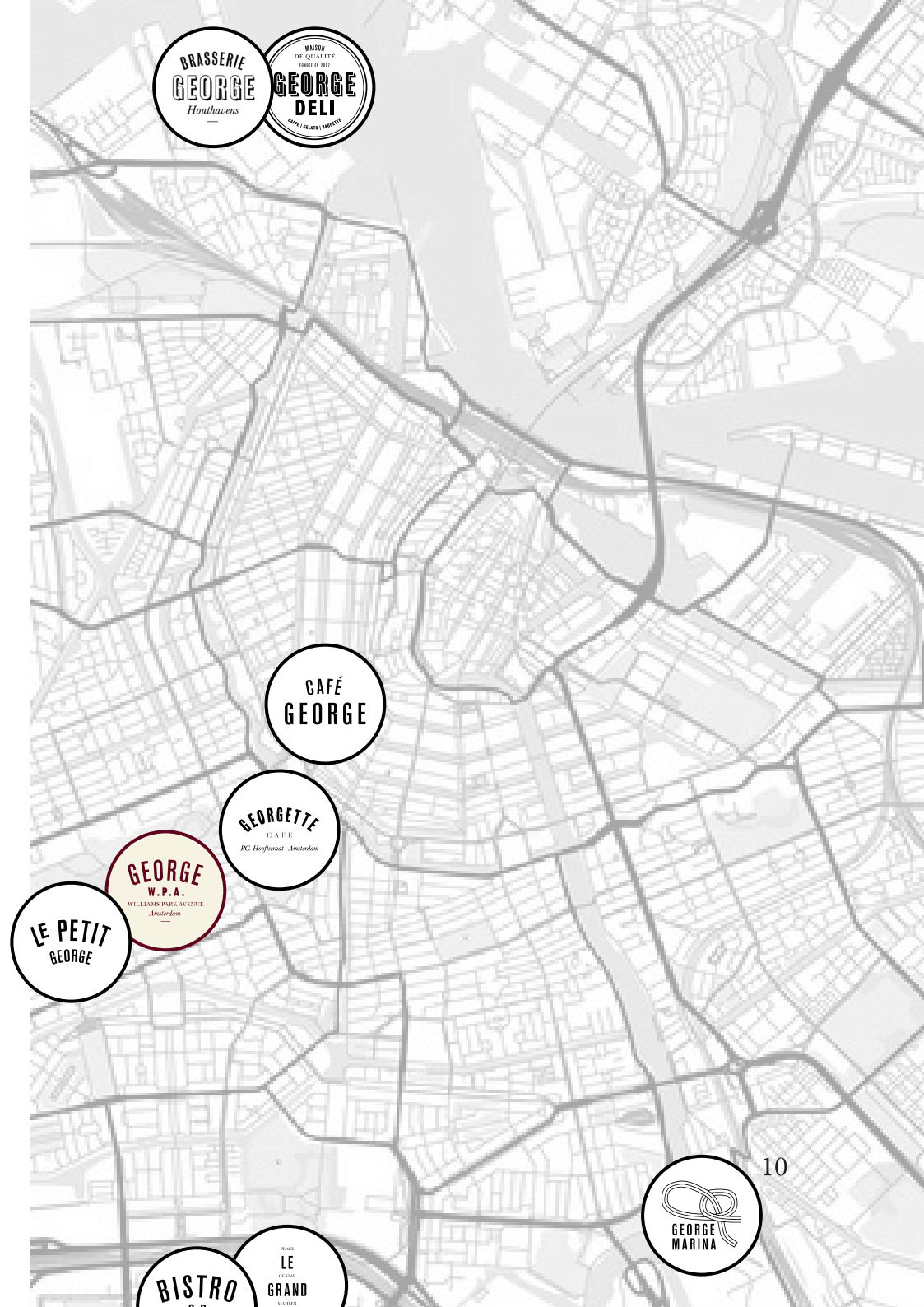
We've taken care of the logistics so your only focus is enjoying the experience.

PUBLIC TRANSPORT

Coming by public transport? **Take tram 2 to Cornelis Schuytstraat (5 min walk) or tram 3 to Van Baerlestraat (4 min walk).** Couldn't be easier.

PARK IT, BABY!

Prefer to drive? Nearby parking is available at **Q-Park Museumplein** (Van Baerlestraat 33B, 6 min walk)



AND THERE'S MORE...

CAFÉ
GEORGE

GEORGE
L.A.

GEORGETTE
CAFÉ
P.C. Hoofstraat · Amsterdam

GEORGE
MARINA

LE PETIT
GEORGE

BRASSERIE
GEORGE
Houthavens



PLACE
LE
GUSTAV
GRAND
MAHLER
GEORGE

BISTRO
G.P.
GELDERLANDPLEIN
BY GEORGE

CAFÉ
GEORGE
CURACAO

RESTAURANT
D'VIJFF VliegHEN

HERENGRACHT
RESTAURANT & BAR

GUSTAVINO
restaurant & vinoteca

Aside from George W.P.A. we offer nine other George restaurants in Amsterdam. While they all have that French-brasserie-in-New-York vibe we are famous for, they each come with their own style, reflecting the local neighbourhood and designed to make your guests feel right at home.

Did you already hear about our other locations? Restaurant D’Vijff Vlieghe, Herengracht Restaurant & Bar and, Gustavino Restaurant & Vinoteca. All with their own unique style and cuisine but like our George restaurants designed to make your guests feel right at home.

GEORGE W.P.A.

WILLIAMS PARK AVENUE

Amsterdam

Willemsparkweg 74
1071 HK, Amsterdam

contact@georgewpa.nl
+31 20 737 10 68

events@umhgroup.nl
+31 20 737 0280

[georgeamsterdam](#)
www.georgewpa.nl

CLICK TO EMAIL US