

park lane

Townhome Type B

Bedrooms	2	Living Area	87.80m ²
Bathrooms	2.5	Garage Area	38.24m ²
Car Spaces	2	Total GFA:	126.04m²

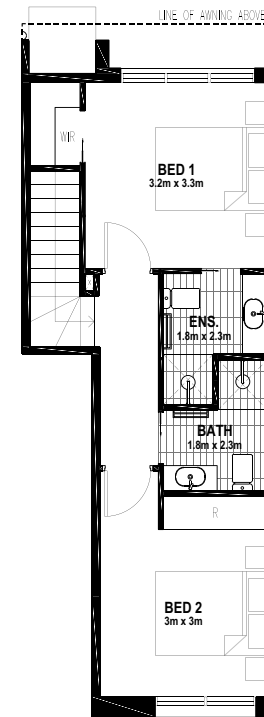
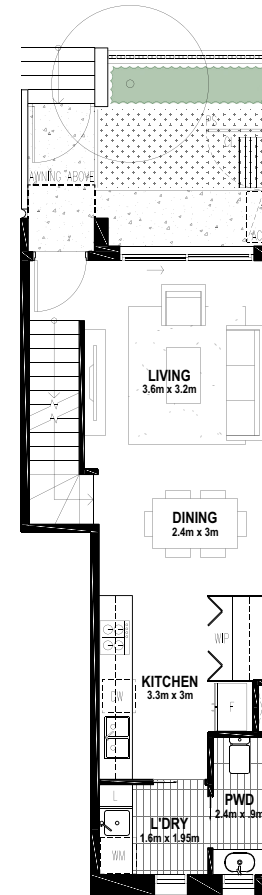
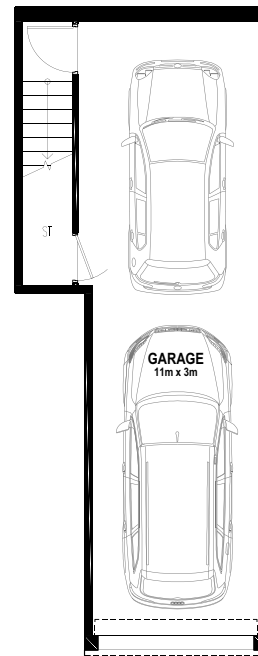
Indicative courtyard shown on plans.
Refer to site plan for specific courtyard.

Unit Numbers — 107.2, 107.4, 106.5*, 106.7*, 106.9*, 107.10*

*Denotes mirrored unit numbers

Legend

P Pantry	WM Washing Machine	OPT.ST Optional Storage
F Fridge	WIR Walk In Robe	PS Operatable Privacy Screen
L Linen	WIP Walk In Pantry	CL Clothes Line
R Robe	ST Storage	HLW High Light Window
DW Dishwasher	SL Storage	



This material should be used as a guide only. It is believed (but is not guaranteed) to be accurate at the time of preparation. Prospective buyers should read the operative provisions of the contract for sale and should rely on their own investigations and independent advice. All plans are subject to relevant development approvals and any design changes will be notified to exchanged buyers in accordance with the terms of the contract for sale and applicable legislative requirements. Photographs and artist impressions are indicative only and should not be relied upon as an accurate representation of the finished product. Portrayals of furnishings, floor coverings, and fittings are not shown to scale, nor included in the sale (unless expressly included). The location of connections (which may include power, television and internet) is indicative only. Structural elements (including columns and bulkheads) may not be depicted or may vary in dimension and location once constructed. Areas shown are Gross floor area (GFA) areas and are measured in accordance with the Property Council of Australia Method of Measurement. GFA is measured to the outside face of external walls and common area walls and to the centre line of party walls and includes riser shafts and vertical service ducts. Balcony area is measured to the outside face of the balustrade. Any areas or dimensions shown are indicative only and may be varied subject to detailed design.



Scale Bar 1:100