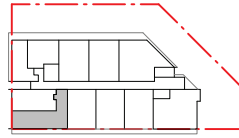


2 BED TYPE - 2B

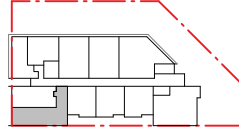
UNIT NUMBER	LEVEL
-------------	-------

UNIT 5	LEVEL 1
UNIT 16	LEVEL 2
UNIT 27	LEVEL 3
UNIT 38	LEVEL 4
UNIT 49	LEVEL 5
UNIT 60	LEVEL 6
UNIT 71	LEVEL 7
UNIT 82	LEVEL 8
UNIT 93	LEVEL 9

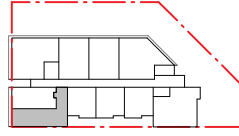
Grand total: 9



UNIT KEY - L1



UNIT KEY - L2 - L8

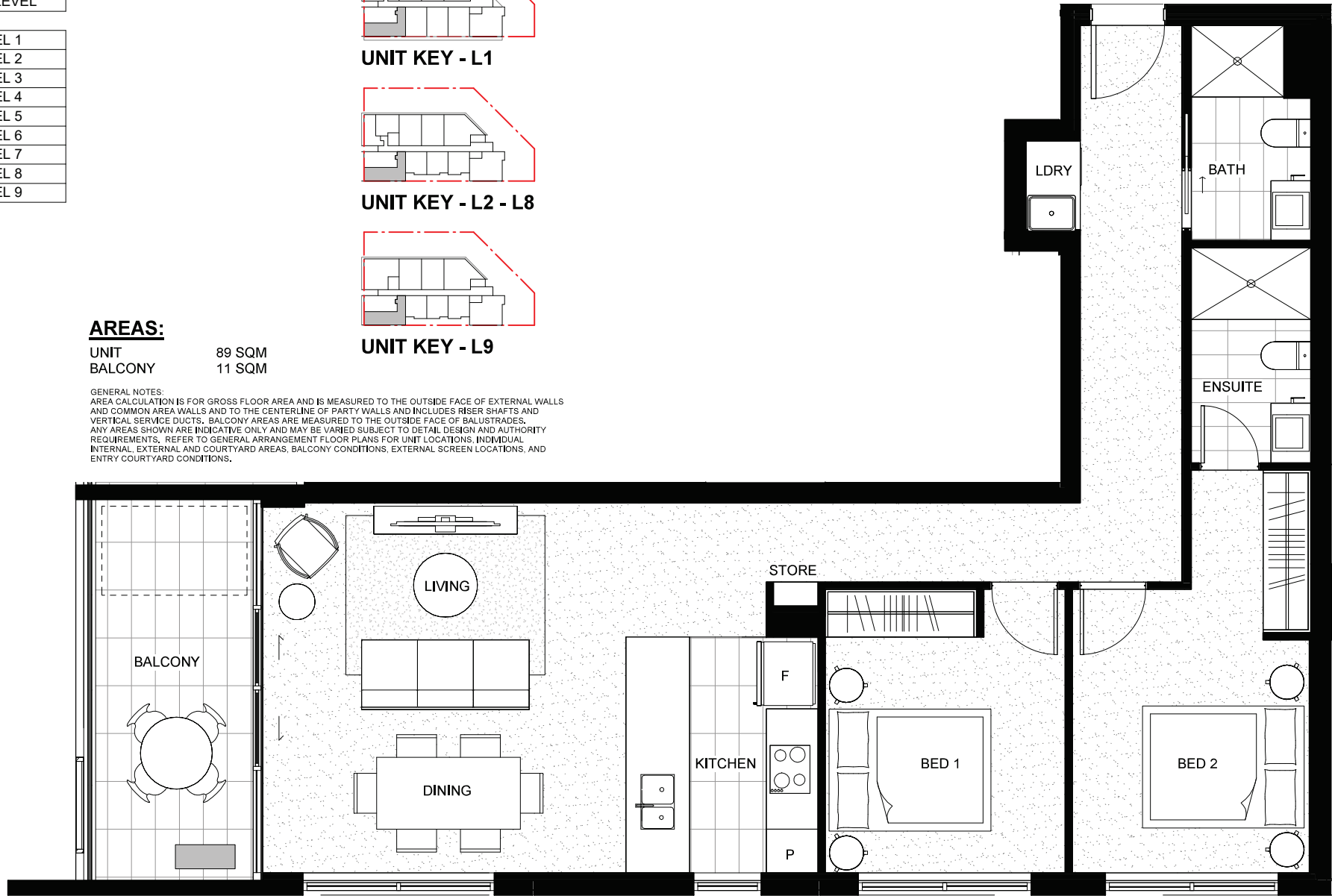


UNIT KEY - L9

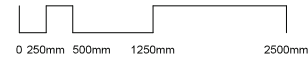
**AREAS:**

UNIT	89 SQM
BALCONY	11 SQM

GENERAL NOTES:  
 AREA CALCULATION IS FOR GROSS FLOOR AREA AND IS MEASURED TO THE OUTSIDE FACE OF EXTERNAL WALLS AND COMMON AREA WALLS AND TO THE CENTERLINE OF PARTY WALLS AND INCLUDES RISER SHAFTS AND VERTICAL SERVICE DUCTS. BALCONY AREAS ARE MEASURED TO THE OUTSIDE FACE OF BALUSTRADES. ANY AREAS SHOWN ARE INDICATIVE ONLY AND MAY BE VARIED SUBJECT TO DETAIL DESIGN AND AUTHORITY REQUIREMENTS. REFER TO GENERAL ARRANGEMENT FLOOR PLANS FOR UNIT LOCATIONS, INDIVIDUAL INTERNAL, EXTERNAL AND COURTYARD AREAS, BALCONY CONDITIONS, EXTERNAL SCREEN LOCATIONS, AND ENTRY COURTYARD CONDITIONS.



Scale 1:50



Project: **MIDTOWN - CORNER**

Drawing Title: **2 BED - TYPE 2B**

Drawing Number: **M-02B**

Revision: **A**

Date: **23 AUG 2024**

Scale: **1:50 @ A3**

**Cox Architecture**  
 1119 Gindime Parade  
 Kingston, ACT 2604, Australia  
 T + 61 2 6239 6236  
 F + 61 2 6239 6200  
 www.coxarchitecture.com.au

