


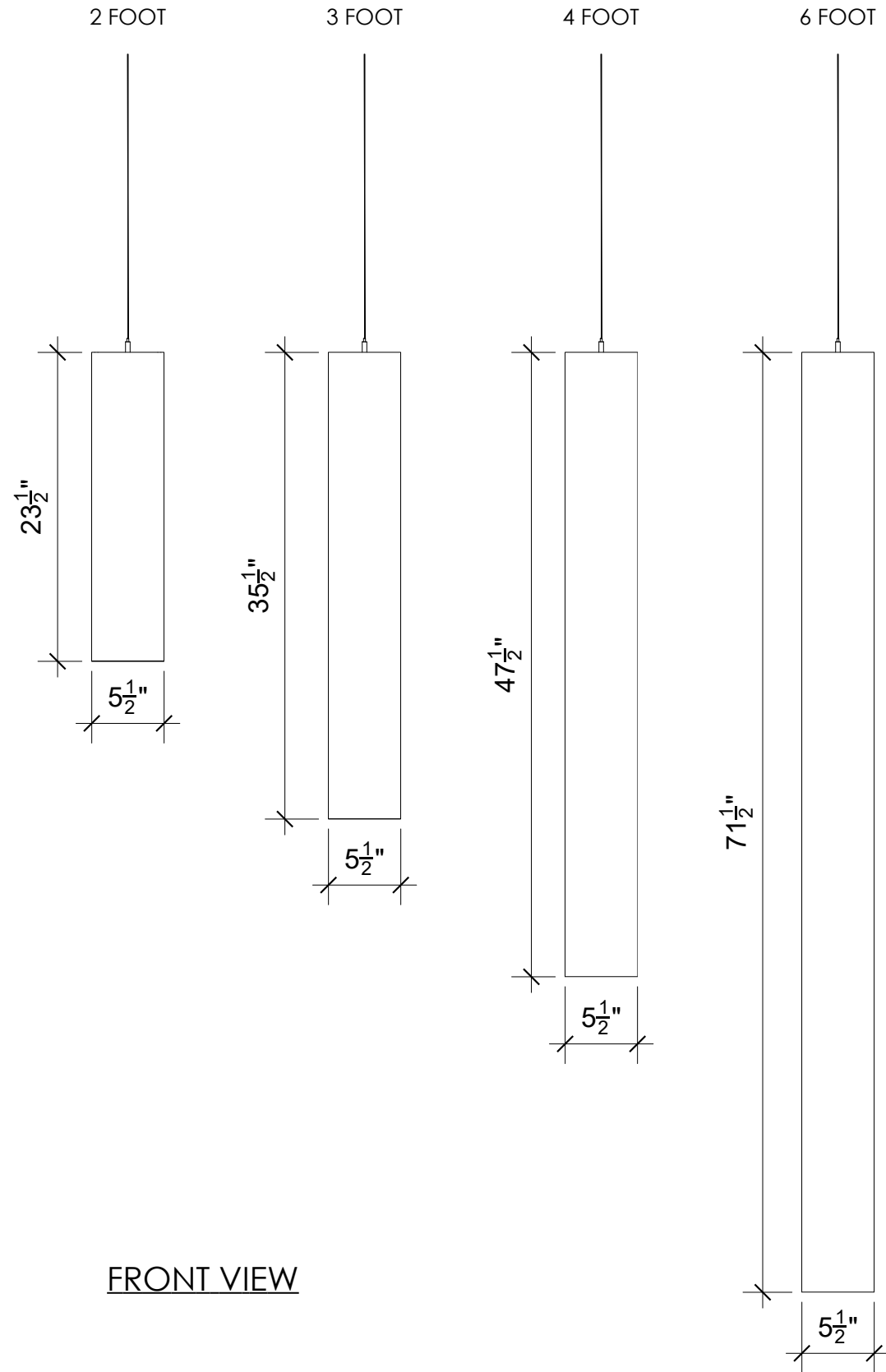


PRODUCT: FELT		DESCRIPTION:  CONSTRUCTED FROM 12mm FELT		 <a href="http://www.sonusna.com">www.sonusna.com</a>	
DESIGN: VERTICAL JIMMY BEAM					
DRAWN BY:					
DATE: 5/28/2026					
SHEET:	SCALE:	REVISIONS:			

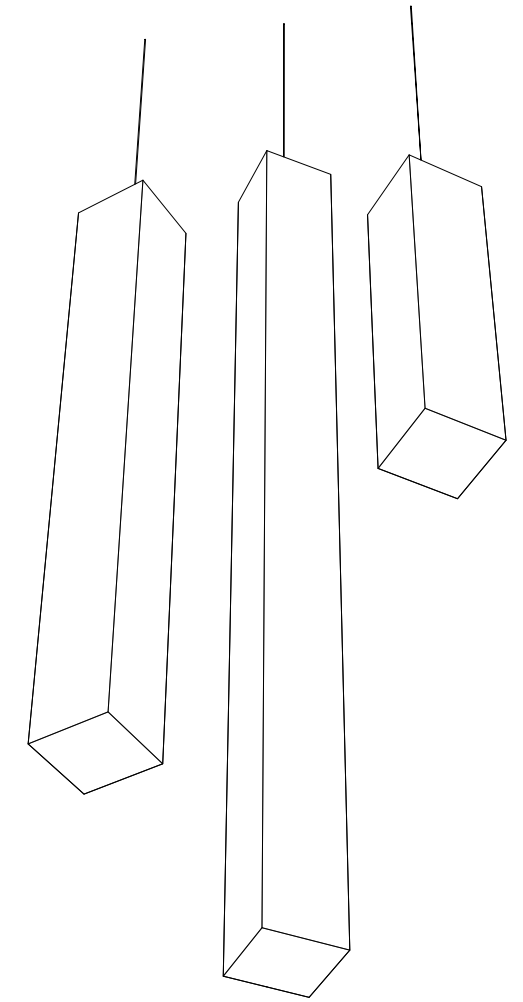
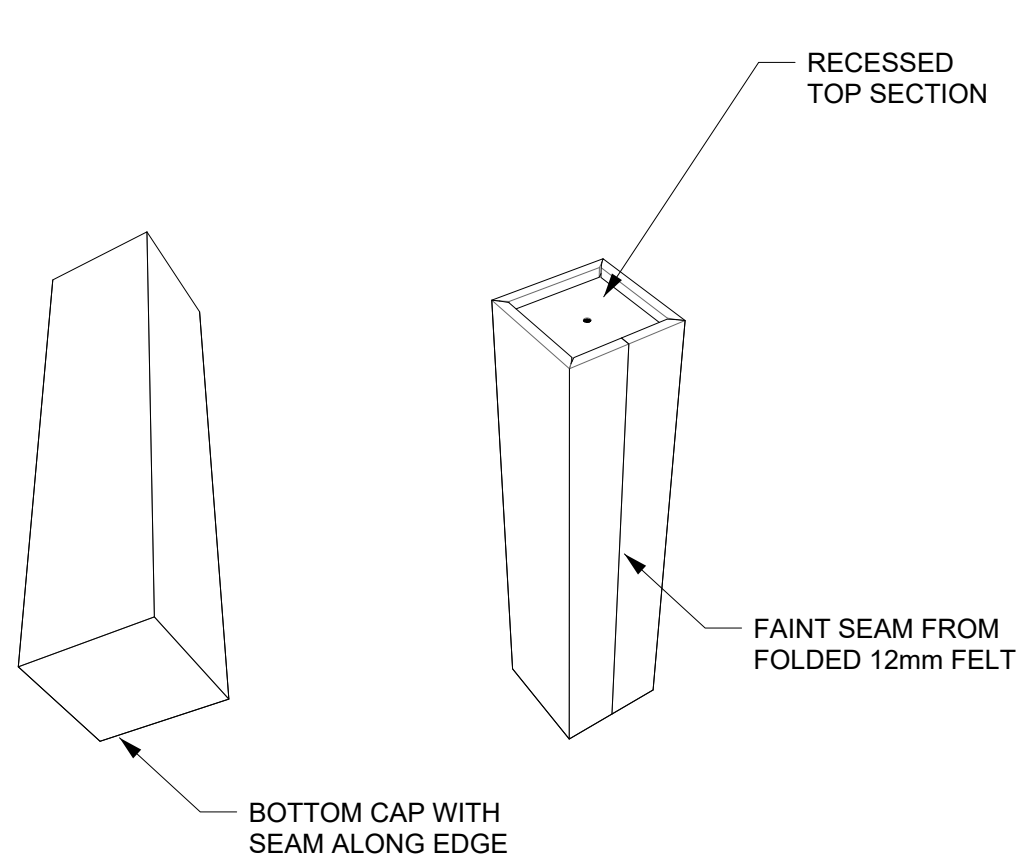
PROPRIETARY AND CONFIDENTIAL  
THE INFORMATION CONTAINED IN THIS DRAWING IS  
THE SOLE PROPERTY OF SONUS NORTH AMERICA  
ANY REPRODUCTION IN PART OR AS A WHOLE  
WITHOUT THE WRITTEN PERMISSION OF SONUS  
NORTH AMERICA IS PROHIBITED

# VERTICAL BAFFLE DIMENSIONS

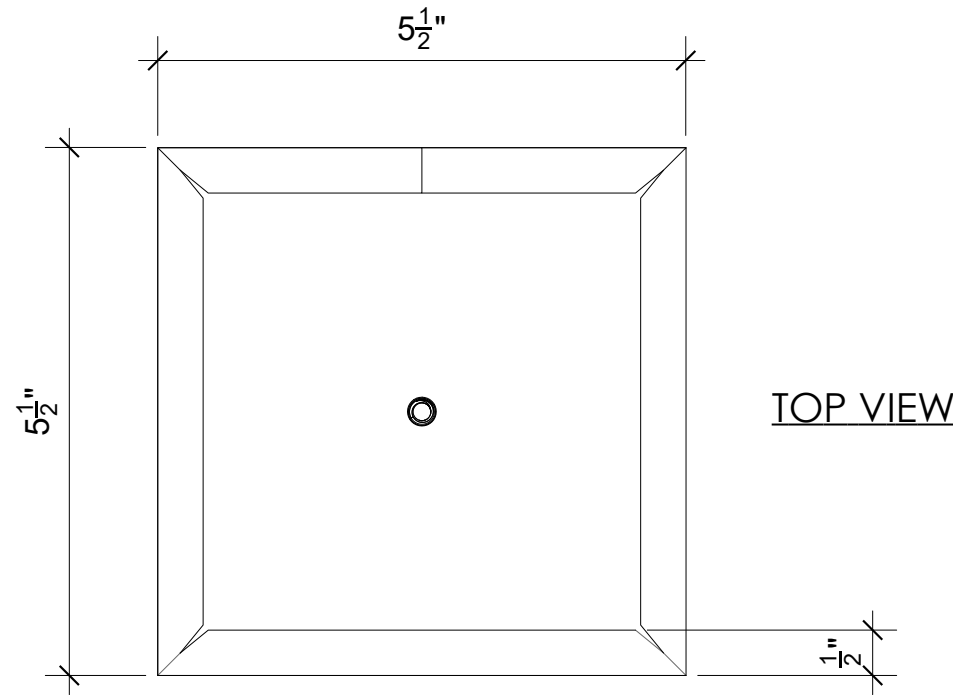
STANDARD SIZES  
CUSTOM LENGTHS AVAILABLE




FRONT VIEW



PERSPECTIVE VIEW

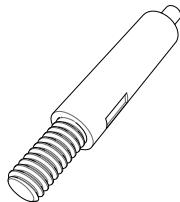


PRODUCT: FELT		DESCRIPTION: CONSTRUCTED FROM 12mm FELT			
DESIGN: VERTICAL JIMMY BEAM		 <a href="http://www.sonusna.com">www.sonusna.com</a>			
DRAWN BY:					
DATE: 5/28/2026					
SHEET:					
SCALE:	REVISIONS:				

PROPRIETARY AND CONFIDENTIAL  
THE INFORMATION CONTAINED IN THIS DRAWING IS THE SOLE PROPERTY OF SONUS NORTH AMERICA ANY REPRODUCTION IN PART OR AS A WHOLE WITHOUT THE WRITTEN PERMISSION OF SONUS NORTH AMERICA IS PROHIBITED

# CABLE GRIPPER INSTALL

**INCLUDED HARDWARE:**

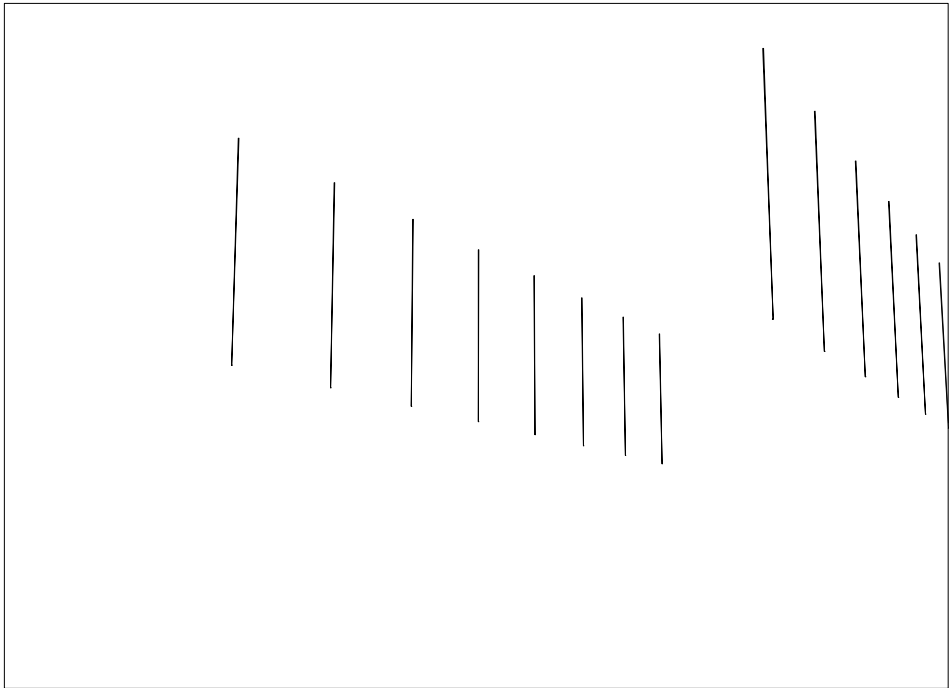


1x MALE CABLE GRIPPER IS INCLUDED WITH EACH BAFFLE

CEILING HARDWARE AND 1/16" AIRCRAFT WIRE NORMALLY PROVIDED BY OTHERS UNLESS OTHERWISE STATED

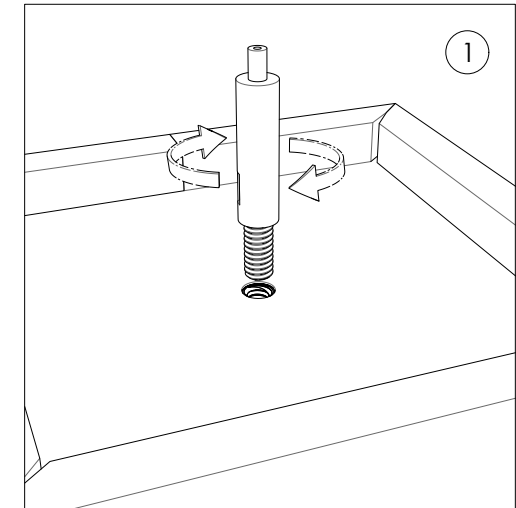
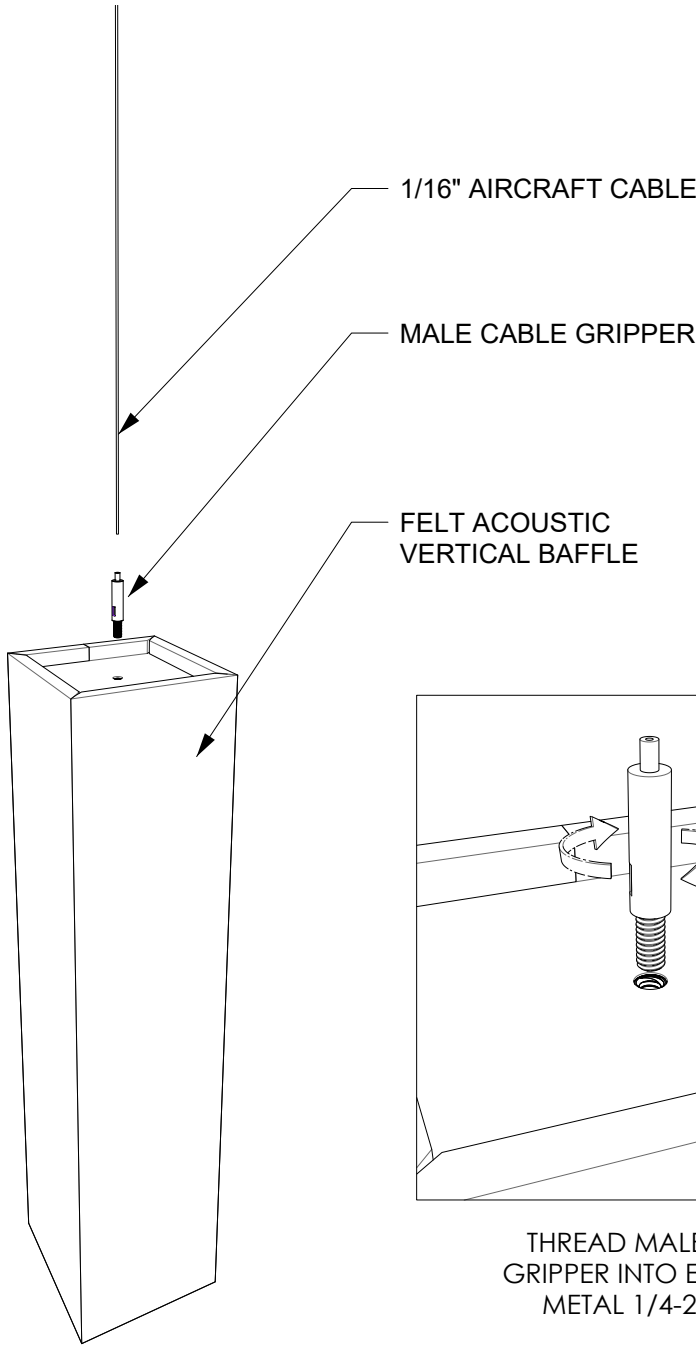
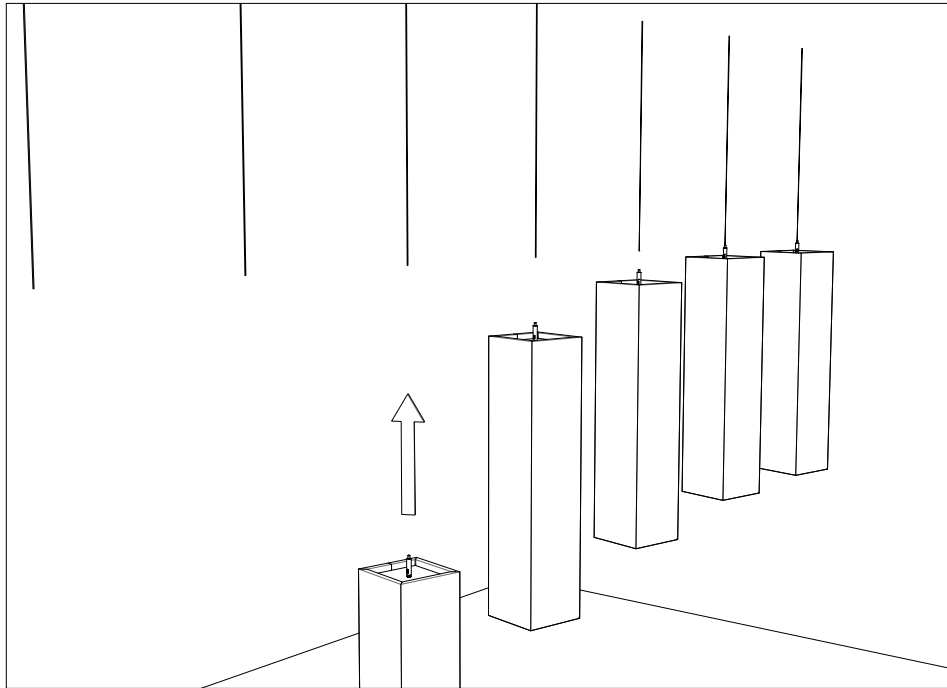
**STEP ONE**

PRE-INSTALL 1/16" AIRCRAFT CABLE ONTO CEILING IN DESIRED LOCATION AND PATTERN

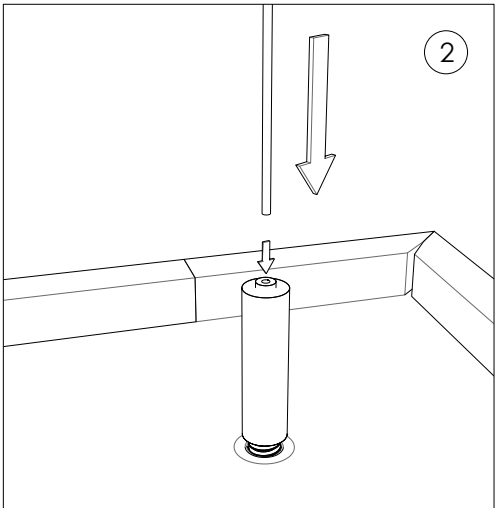


**STEP TWO**

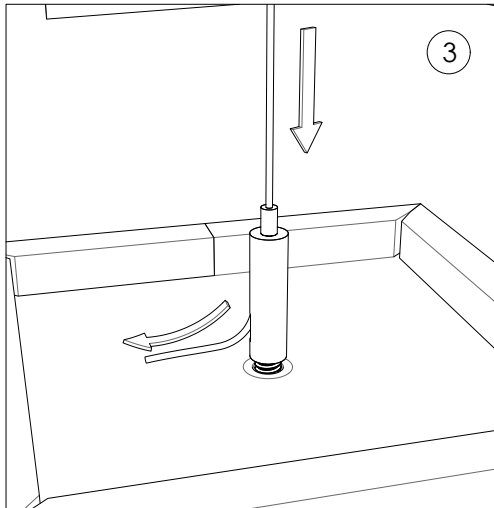
WITH CABLE GRIPPER PRE-INSTALLED LIFT BAFFLES INTO POSITION AND ATTACH CABLES



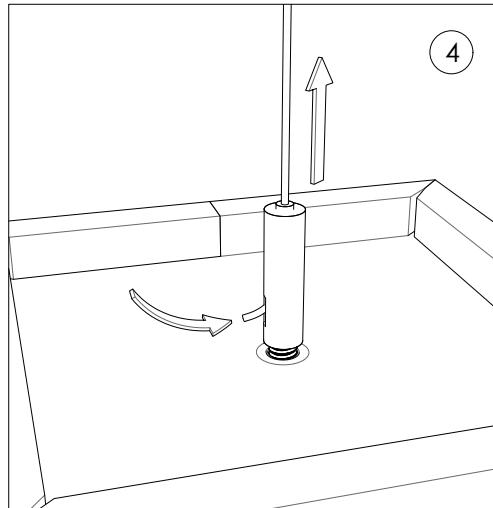
1  
THREAD MALE CABLE GRIPPER INTO EMBEDDED METAL 1/4-20 T-NUT



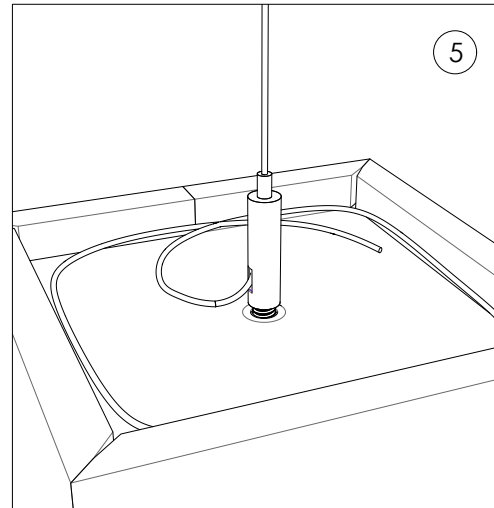
2  
DEPRESS SPRING LOCK TO INSTALL AIRCRAFT CABLE



3  
BAFFLE CAN BE RAISED BY PULLING ON AIRCRAFT CABLE  
SPRING LOCK WILL AUTO HOLD THE HEIGHT OF BAFFLE



4  
BAFFLE CAN BE LOWERED BY DEPRESSING SPRING LOCK THEN SLIDE AIRCRAFT CABLE UP TO ADJUST HEIGHT  
RELEASE SPRING LOCK TO HOLD IN PLACE



5  
RELEASE SPRING LOCK IN FINAL POSITION  
COIL OR CUT ANY EXCESS CABLE TO HIDE FROM BELOW