



# State-of-the-Art 360° Tube Laser

## Efficient - Reliable - Repeatable

- Faster Fabrication with Precision
- Reduction of Final Construction Costs
- Flexible Solutions for 3D Cutting on Large Scale Structural Products: Tubing, Beams, Channels, Flat Bars, Angles
- 360 Degree Multi-function Operations
- CNC High Quality Custom Steel Parts
- ISO 9001:2015 Certified Facility

**PDM**



Y O U R   S T E E L   S E R V I C E   C E N T E R



# THE OPPORTUNITIES OF LASER

**Simplification:** The use of open profiles and special sections simplifies assembly and reduces final construction costs. In 3D cutting mode the machining of the chamfer for weld preparations can be completed.



**Accuracy:** Parts with better cut quality/ Repeatability: up to  $\pm .004$  cutting tolerance. High quality parts with machining accuracy and batch to batch consistency enable robotic welding.



**Universal:** The versatile laser cutting head has the ability to machine the widest variety of sections, materials and thicknesses including: cutting, drilling, tapping.



**Efficiency:** Reduced processing time for large parts.



PDM Steel offers solutions for industrial construction, agricultural applications, manufacturing sectors, structural steel systems, major fabrications and complicated architectural designs.



# LT14 FIBER Tube Laser

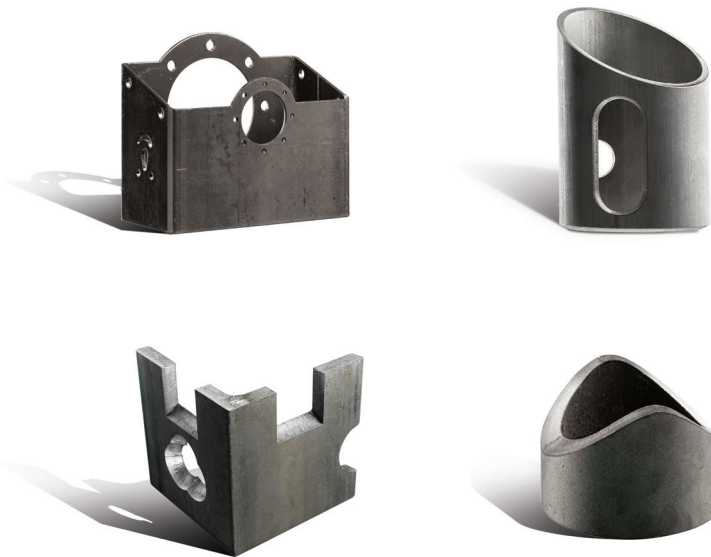
## LARGE SIZES FOR LARGE DIAMETERS

PDM Steel offers a single system capable of combining multiple manual operations into a single cycle, dramatically reducing your wait time and cost. Additionally, this process can decrease the amount of welding by developing "smart parts" including tabs and features on the processed material for quicker assembly.



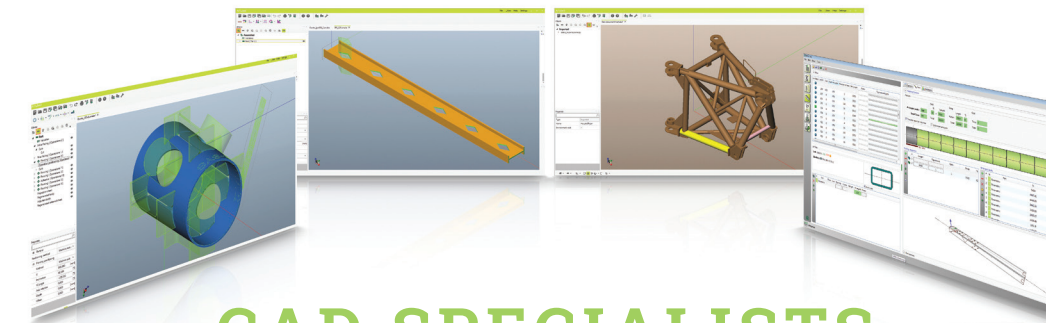
YOUR STEEL SERVICE CENTER

**SMART PARTS**—The Ultimate Service Solution from Raw Material to Finished, Ready to Assemble Product



Intricate designs for frames and tubular structures offering deformation free piercing operations.

- Efficiency = lower cost per part
- Work in process inventory is reduced
- Floor space for material staging is freed up
- Conventional fixtures and dies are eliminated
- Tooling lead time, cost and maintenance are eliminated
- Small batch runs become cost effective due to rapid set up
- Virtually any cutting geometry can easily and rapidly be created
- The new product development cycle can be dramatically shortened



- FILES ACCEPTED: 3D models: IGES, STEP and .X\_T formatted three dimensional CAD files
- Dynamic nesting –machine determines the most efficient cutting locations, part arrangement and eliminates wasted scrap
- Ability to quickly nest, create jobs and orders, maximizing efficiency and productivity.
- Quickly import, create or modify 3D CAD data and convert it into machine code.
- 3 dimensional parametric system
- Automated jointing between tubes of different diameter, thickness and shape simplifies the assembly of frames and structures

STATE-OF-THE-ART  
Parts and frames of any complexity



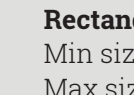
## CAPACITIES/ SPECIFICATIONS:



**Round**  
Min diameter: 1"  
Max diameter: 14"



**Square**  
Min size: 1"  
Max size: 10"



**Rectangle**  
Min size: 1" x 1.25"  
Max size: 12" x 8"



**Angle**  
Min size: 1.5"  
Max size: 10"



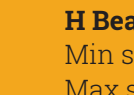
**Channel**  
Min size: 1.125" x 1.25"  
Max size: 12" x 4"



**Flat Bar**  
Min size: 5/16" x 2"  
Max size: 3/4" x 14"



**I-Beam**  
Min size: 4"  
Max size: 12"



**H Beam**  
Min size: 4"  
Max size: 12"

\*Other open profiles upon request

\*You are not limited to just round, square or rectangular. Special shaped tubes or open sections can be programmed and cut without problems.

Special requirements? Ask us about additional processing capabilities not listed above.



**Standard Materials:** Mild Steel, Stainless Steel, Aluminum (Other materials may be available upon request)

**Tube length for loading/unloading:**  
20'-40' infeed, up to 40' outfeed

**Maximum tube weight:** 67 lbs./ft.

**Drilling & Tapping**  
Min .125- 5/8" max

**Cutting Tolerance**  
Cutting tolerance up to +/- .004







The LT14 FIBER Tube Laser allows PDM Steel the ability to offer you the ultimate one stop, state-of-the-art service solution. We develop raw quality material into finished custom parts, using your unique specifications, saving you time and money. For more information, please contact us for a consultation.

## C O N T A C T   I N F O R M A T I O N



### PPC

4005 E. Church Avenue  
Fresno, CA 93725  
800-800-4736



### PDM Stockton

3535 E. Myrtle Street  
Stockton, CA 95205  
800-800-4736  
stocktonsales@pdmsteel.com

### PDM Santa Clara

3500 Bassett Street  
Santa Clara, CA 95054  
800-672-8801  
santaclarasales@pdmsteel.com



Check out the PDM website for video and more information!



### FPSS

936 Performance Drive  
Stockton, CA 95206  
800-972-5986  
fpsssales@fpsteel.com

### PDM Sparks

1250 Kleppe Lane  
Sparks, NV 89431  
800-736-1400  
sparkssales@pdmsteel.com

### PDM Las Vegas

4475 Alto Avenue  
Las Vegas, NV 89115  
888-413-4736  
lasvegassales@pdmsteel.com



### PDM Spanish Fork

1100 North 300 West  
PO BOX 280  
Spanish Fork, UT 84660  
800-444-7361  
spanishforksales@pdmsteel.com

### PDM Denver

4755 N. Washington Street  
Denver, CO 80216  
800-736-4227  
denversales@pdmsteel.com

### PDM Woodland

1785 Schurman Way  
Woodland, WA 98674  
800-451-9581  
woodlandsales@pdmsteel.com

[pdmsteel.com](http://pdmsteel.com) | [webinquiry@pdmsteel.com](mailto:webinquiry@pdmsteel.com)