

PDM STEEL PROCESSING SOLUTIONS

**Service solutions from raw material to finished,
ready to assemble products**

PDM
S T E E L

- 1st stage in-house fabrication solutions for greater production efficiencies
- Tabs and weld-prep features on processed material for quicker assembly
- Intricate designs, shapes, and frames of any complexity
- Repetitive part processing
- CNC High Quality Custom Steel Parts
- Material packaging and kitting solutions
- Comprehensive steel inventory and just-in-time delivery options

LASER CUTTING | SAWING | SPLITTING | CAMBERING | PRECISION PLATE
PROCESSING | FORMING | BEVELING | THERMAL SHAPE CUTTING | SHEARING
GAUER EDGING | COIL PROCESSING



pdmsteel.com/processing
webinquiry@pdmsteel.com

THE OPPORTUNITIES OF LASER

SMART PARTS—The Ultimate Service Solution from Raw Material to Finished, Ready to Assemble Product



Intricate designs for frames, parts, and tubular structures offering deformation free piercing operations.

- Efficiency = lower cost per part
- Work in process inventory is reduced
- Floor space for material staging is freed up
- Tooling lead time, cost and maintenance are eliminated
- Small batch runs become cost effective due to rapid set up
- Virtually any cutting geometry can be easily and rapidly created
- The new product development cycle can be dramatically shortened
- Custom Tabs and Features for Quicker Assembly
- Beveled Edge capacity for Weld Preparation

*Quality
Driven
Operations*



Delivering meticulous results-Initial concept through design, production, and inspection, PDM always delivers.

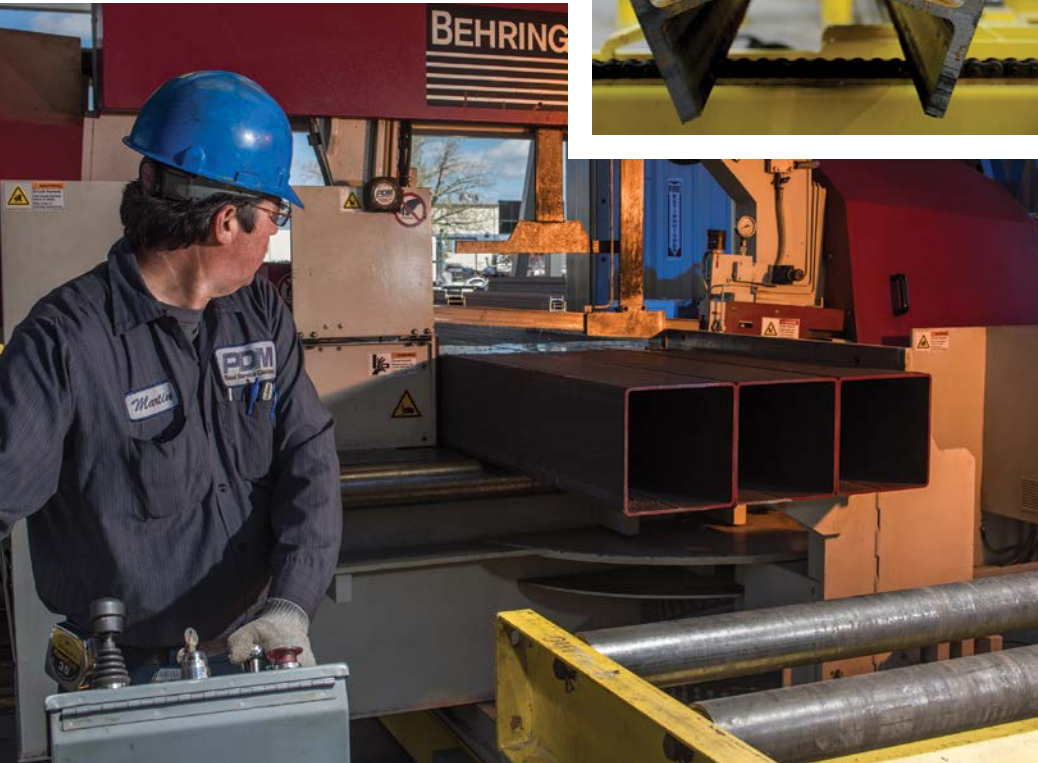
STRUCTURAL PROCESSING

SAWING

- Miter cutting capabilities include capacity up to 25" x 25" and 45 degrees
- Sawing capacity up to 40" x 48"
- CNC Indexing, accurate bundle cutting and reliable production
- Cost saving nesting functions

ROTARY SHEAR SPLITTING

- Wide flange, standard beams, and channels
- Miscellaneous channels into custom angles

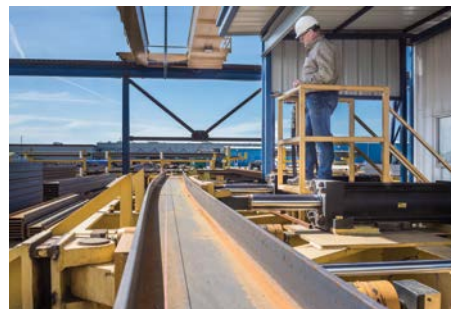


CAMBERING

- Beams up to 36" and 262 lbs./ft.
- Material over 60' long
- Camber standard and miscellaneous channels, beams, and tubing

GAUVER EDGING

- Thicknesses from 0.036" to 3/16"
- Widths from 1/2" to 36"



THE OPPORTUNITIES OF LASER

INFINITE PART GENERATION OF ANY GEOMETRY

PLATE & SHEET LASER

- thicknesses up to 1" (mild steel plate)
- sizes up to 60" x 120"
- part accuracy up to +/- .005
- machine repeatability +/- .001"
- mild steel, stainless steel, aluminum, and galvanized



Precision Fly Cutting (Grids)








Intricate Shapes & Geometries



Consistent Cut Finish

LARGE CAPACITY TUBE LASER

- | | | |
|---|--|--|
|  | Round
Min diameter: 1"
Max diameter: 14" | |
|  | Square
Min size: 1"
Max size: 10" | Rectangle
Min size: 1" x 1.25"
Max size: 12" x 8" |
|  | Angle
Min size: 1.5"
Max size: 10" | |
|  | Channel
Min size: 1.125" x 1.25"
Max size: 12" x 4" | |
|  | I-Beam
Min size: 4"
Max size: 12" | WF-Beam
Min size: 4"
Max size: 12" |

Standard Materials:

- Mild Steel, Stainless Steel, Aluminum (Other materials may be available upon request)
- 20'-40' tube length infeed up to 40' outfeed for loading/unloading

Tube length for loading/unloading:
20'-40' infeed, up to 40' outfeed

Maximum tube weight:
67 lbs./ft.

Drilling & Tapping
Min .125- 5/8" max

Cutting Tolerance
Cutting tolerance up to +/- .004

*Other open profiles upon request

*You are not limited to just round, square, or rectangular. Special shaped tubes or open sections can be programmed and cut without problems.

Special requirements? Ask us about additional processing capabilities not listed above.



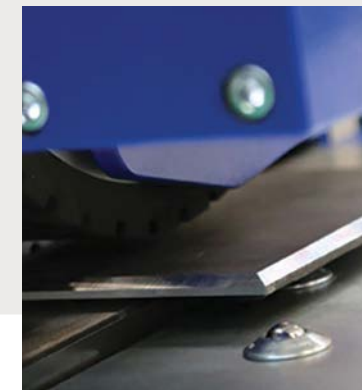
SHEARING

- Up to 1/4" mild steel plate



BEVELING

- Use on straight plate segments and bar stock
- Bevel angles from 30° to 60°
- Produces smooth, quality bevels, in high quantities



PRECISION PLATE PROCESSING

- Drilling** up to 4" hole
- Tapping** up to 2-1/16" hole
- Milling**
- Counter Boring**
- Chamfering**
- Hole Interpolation**
- Thread Milling**
- Part Marking**
- Plasma** up to 3" thick
- Oxy Fuel** up to 8" thick
- Plasma/Oxy Fuel Beveling**
- Cutting Area:** 120" x 480"



THERMAL SHAPE CUTTING

- Plasma cuts from 10 ga. up to 2 1/2"
- Oxy/fuel cuts from 3/16" to 12"
- Cuts up to 240" wide & 60" long
- Multiple axis beveling



PRESS BRAKE FORMING

Large: 1,000 ton, 24' bed

- 1/2 thick mild steel plate up to 24' long

Small: 350 ton 12' bed

- .375 thick mild steel plate up to 12' long

- Ask for our forming guide/shapes*



COIL PROCESSING

Leveling: two corrective lines capable of processing thicknesses .018" through .375", widths up to 72", and lengths up to 480"

Slitting .018" through .135", widths up to 60"



PDM STEEL YOUR STEEL SERVICE CENTER



PDM
STEEL

TRUSTED STEEL DISTRIBUTOR SERVING THE WESTERN US SINCE 1954

COMPREHENSIVE STEEL PRODUCT INVENTORY

Hot Rolled Bars

- bar size channels, tees, angles
- hot rolled flats, UM plate, rounds, squares, strips

Structural Shapes

- structural angles, channels, misc. channels
- wide flange beams, standard I beams, miscellaneous beams, H pile

Tubing

- mechanical: square, rectangular, round
- structural: square, rectangular, round, pipe-size tube

Pipe

- gauge pipe, standard, heavy, extra heavy

Plate

- A36, A572/50, A516 PVQ, corrosion resistant A588, high brinell, A514 constructional alloy and floor plate

Sheet

- commercial quality, high tensile, cold rolled, hot rolled, hot rolled pickled and oiled, galvanized, paintable galvanized

Expanded Metal & Grating

- regular & flattened expanded metal & grating, diamond grip and welded bar grating

Cold Finish and Alloy Bars

- cold drawn round, flats, squares, hex, stressproof, C1045, C12L14

Stainless and Aluminum

- sheet, plate, bars

* stock items may vary by location

* available in various grades, sizes, and lengths

* additional products available upon request



See our product catalog on our website for weight/foot information.



PREMIER SERVICE SOLUTIONS

- In-house CAD programmers and onsite field specialists
- Dynamic nesting and part arrangements to eliminate wasted scrap
- Over 95% delivery performance
- Weather protection, packaging, and delivery options
- Vast network of service locations throughout the Western US and through Reliance Family of Companies.
- ISO 9001:2015 certified facilities* (see facilities list below)



Established mill relationships and strong supporter of domestic producers.

CONTACT INFORMATION

PDM Corporate

9245 Laguna Springs Drive Ste. 350, Elk Grove, CA 95758
916-513-4548



PDM Spanish Fork

PO BOX 280
1100 N 300 W
Spanish Fork, UT 84660
801-798-8676



PDM Santa Clara

3500 Bassett Street
Santa Clara, CA 95054
408-988-3000



PDM Stockton

3535 E. Myrtle Street
Stockton, CA 95205
209-943-0513



FPSS

936 Performance Drive
Stockton, CA 95206
209-234-0548



PDM Processing Center

4005 E. Church Ave
Fresno, CA 93725
559-442-1410

PDM Denver

4755 N. Washington Street
Denver, CO 80216
303-297-1456



PDM Las Vegas

4475 Alto Avenue
Las Vegas, NV 89115
702-413-0067



PDM Sparks

1250 Kleppe Lane
Sparks, NV 89431
775-358-1441



PDM Woodland

1785 Schurman Way
Woodland, WA 98674
360-225-1133



pdmsteel.com/processing
webinquiry@pdmsteel.com