

Invision HDTV-E

Single Arm TV Wall Mount

Instruction Manual

VESA Compliance 100x100mm - 400x400mm
Recommended Screen Sizes 24" - 60"
Integrated Cable Management
Load Capacity 36.2kg (80lbs)

To receive large format PDF instructions please email:
help@InvisionTechnology.co.uk

Parts List:

A - (M4x25)-4pcs	H - (Φ13×Φ6.2×1.5)-4pcs
B - (M5x25)-4pcs	I - (Φ17×Φ8.2×12)-4pcs
C - (M6x25)-4pcs	J - (Φ13×Φ8.2×20)-4pcs
D - (M8x25)-4pcs	K - (10mm)-1pcs (Not for use with wall fixings)
E - (M8x15)-4pcs	L - (7x80)-4pcs
F - (M8x35)-4pcs	M - (Φ10×Φ7×60)-4pcs
G - (M8x45)-4pcs	N - (M6×12)-4pcs
	O - (M6)-4pcs

Tools List:



First things first: Check the box contains all the items in the parts list above.

Check VESA Compatibility: Please check the VESA measurements before drilling any holes (to check your TVs VESA, measure distance between mounting holes on back of TV).

Check the weight of your TV: You may need an extra person on hand to help!

You will need a few additional tools: A drill & 10mm masonry drill bit or 4mm wood drill bit, depending on the fixing surface, safety glasses, a large Phillips screw driver, a 12mm spanner for the wall fixings (a 12mm socket set is even better) a pencil and a spirit level.

Please wear safety glasses before using your drill – if you have any doubts installing this item please consult your retailer or an experienced installer.

Now please read the instructions fully and plan how to mount your bracket! - As with most single arm cantilevers, note the centre line of the TV will be 127mm (5") offset to the wall fixing centre line.

WARNING!

Severe personal injury and property damage can result from improper installation or assembly. Please read the following warning carefully before beginning.

- Product must be installed by a professional or competent installer.
- If you do not understand the instructions or have any concerns or questions please contact us or a competent installer.
- Do not install or assemble if the product or hardware is damaged or missing. If you require replacement parts, please contact us at Invision for assistance.
- This product fits most 24" - 60" LCD/plasma screen, maximum weight of LCD/plasma screen 36.2kg (80lbs).
- This product has been designed for use on vertical walls constructed of wood studs (minimum 2" x 4" / 51mm x 102mm) or masonry (solid concrete 2000 PSI density minimum).
- For safe installation, the wall you are mounting on must support minimum 3 times the weight of the total load (the TV bracket, the TV and all accessories).
- Do not use this product for any other application than the original design purpose.
- This product contains moving parts, please use with caution.
- When installing take care not to damage electrical wiring or power source.
- The manufacturer will bear no responsibility for mounting to the wall, or incidental or consequential damages arising there from.
- The manufacturer disclaims any liability for the modifications, improper installation or installation over the specified weight range.
- The manufacturer will not be liable for any damages arising from the use of, or inability to use the product.

Lets Get Started!

If you require assistance please contact us at: help@InvisionTechnology.co.uk

Step 1 (Unboxing)

Open the box, take out TV bracket then remove the wall fixing plate plastic covers (Diagram 'A'). Straighten out TV bracket as per diagram.

Remove the bottom 2x M6 bolts (Diagram 'B') using spanner K (provided) which secures the TV mounting plate to bracket arm (do NOT remove the top 2 locking nuts that adjust the tilt).

Diagram 'A'

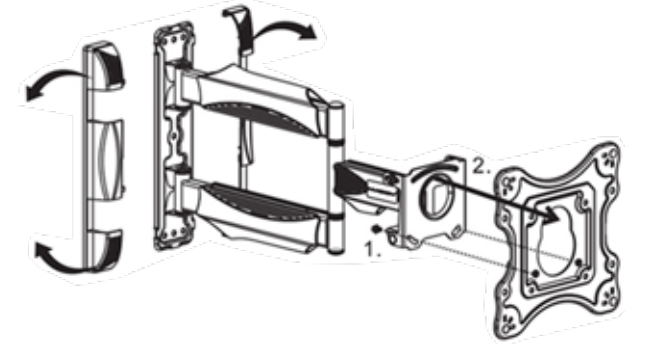
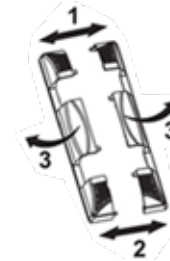
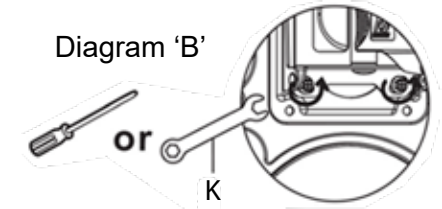


Diagram 'B'

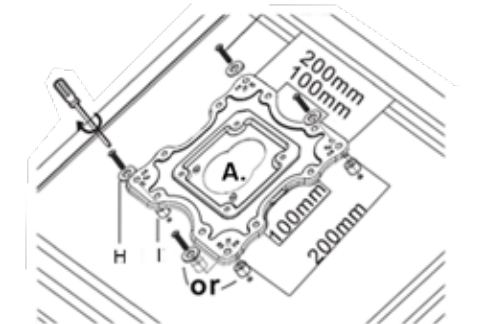


Step 2a (VESA TV Fixings)

Lay TV face down on flat surface to access the 4 VESA fixing points. Position TV mounting plate 'A.' onto back of the TV **with flat side facing TV** & align to the 4 VESA fixing points (use relevant bolts, washers & spacers as per diagram).

Plate 'A' covers TVs with VESA 100x100mm to 200x200mm.

For VESA sizes above 200x200mm see Step 2b below.



Spacers and washers can be used in front or behind TV mounting assembly. Use bolts (A - J) to secure mounting assembly to TV.

Step 2b

Measure and arrange the 4 VESA arms to align with your TVs fixing points see diagrams 'A' & 'B'.

Attach the 4 VESA arms to the main TV fixing plate as in diagrams 'C' using the black nuts and bolts N & O ensuring the square shank at the end of the thread locks in the square hole on the VESA arm. Each arm also has a raised notch which locks into the small rectangle hole on the main TV fixing plate (this ensures the VESA arm cannot move out of position).

Now attach the assembly to the back of your TV as in diagram 'D' and select the correct bolts and washers to match the hole depth. Spacers can be used to adjust the length of your bolts if required.

Please contact us for further VESA arrangements not shown below.

Spacers and washers can be used in front or behind TV mounting assembly. Use bolts (A - J) to secure mounting assembly to TV.

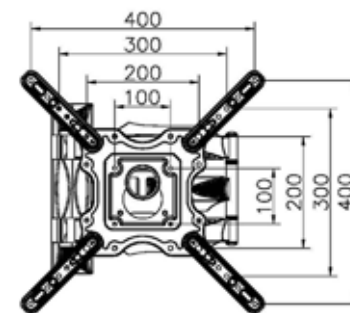


Diagram 'A'

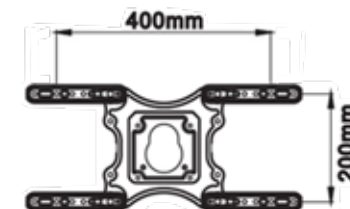


Diagram 'B'

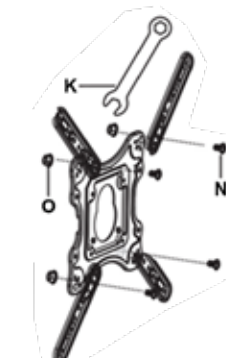


Diagram 'C'

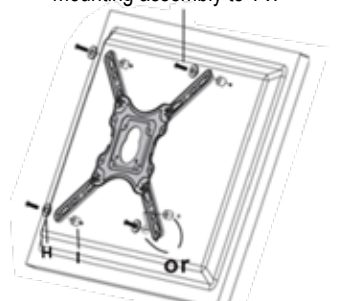


Diagram 'D'

Step 3a (Preparation)

Mark on the wall where your bracket will fit using the wall fixing plate as a template or measure accurately between wall fixing plate mounting holes then mark accordingly using a spirit level and pencil (ensure mounting holes are clearly marked level horizontally & vertically on the wall).

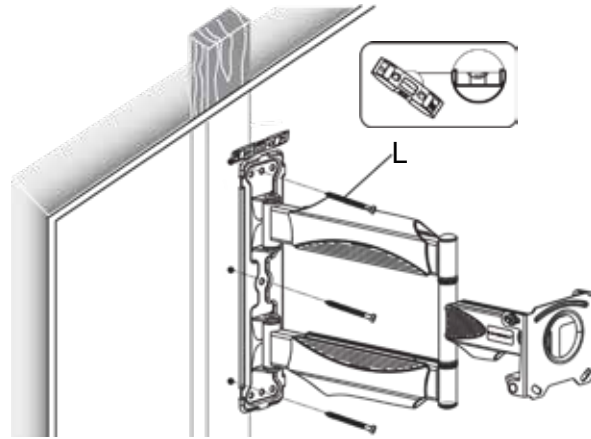
Please Note - Before drilling holes: As with most single arm cantilevers, the centre line of the TV will be 127mm (5") offset to the wall fixing centre line.

This bracket is designed to be attached to either fixed wooden studs within traditional plasterboard (drywall) walls or into solid brick or concrete walls.

Step 3b (Wood Stud Installation)

For mounting to wooden studs – carefully locate the wooden stud and mark the position of the holes level vertically and drill into the wood using a **4mm** drill to a depth of **80mm**.

To mount your bracket hold in position and insert the supplied screws 'L' and fully tighten into the wood using a **12mm** socket set or spanner (plastic plugs are not required).

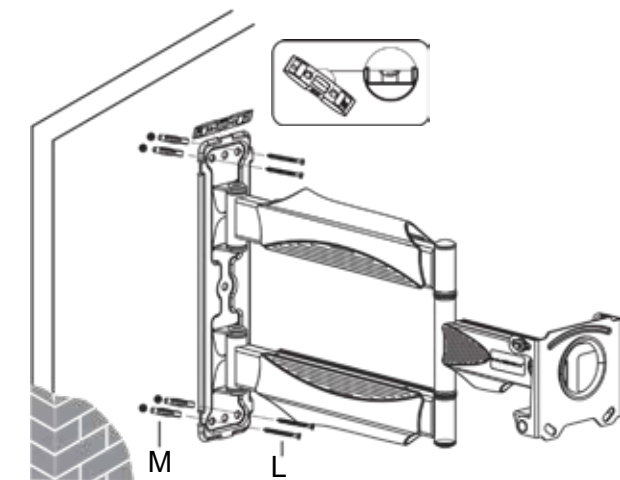


Step 3c (Brick & Concrete Installation)

For mounting to concrete or brick walls, please mark the wall carefully and drill using a **10mm** masonry drill to the length of the screw, a depth of **80mm**.

Fully insert the plastic plugs into the solid wall (**pushed beyond any plaster**) closely following the warning diagram below.

Please ensure they fit securely and are not visible in the holes before tightening the screws into the plastic plugs.



Step 3d

Many modern houses have an air-gap behind plasterboard or drywall. Our fixings are only designed to work with the plastic plug fully inserted into the brick or concrete that lies behind any plaster or drywall air gap. To use our fixings in this way **YOU MUST** insert the plug past any plaster/drywall and fully into the underlying brick or concrete to gain a secure fixing. (The drill depth may have to be increase to make sure the plug can be fully inserted to the brick or concrete).

When fitting, the screw must be at least 3/4 of the way into the plug, and the plug must be fully inserted into brick or concrete to be effective.

Depending on the plasterboard/dry wall air gap you may need to purchase longer fixings to ensure a secure fix.



WARNING
Please see diagram right for correct installation of screws & plugs

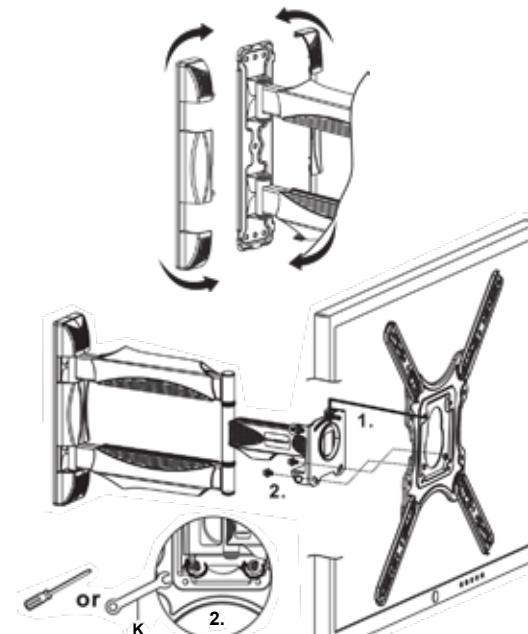
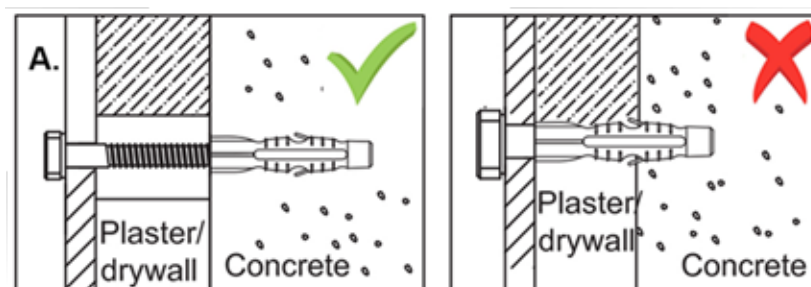


Diagram 'A'

Step 4a

Two people are recommended to complete this step.

Carefully lift the TV & mounting plate assembly from **Step 2a/b**, hook the keyhole slot over the wall brackets circular safety securing point (1.). Slide down to secure in place and **before letting go pull down gently to test TV is located securely whilst keeping a firm grip of the TV.**

Once located in place make sure your TV is level and replace the 2x M6 securing bolts (2.) which were removed in Step 1, then fully tighten both bolts to secure your TV to the wall bracket see Diagram 'A'.

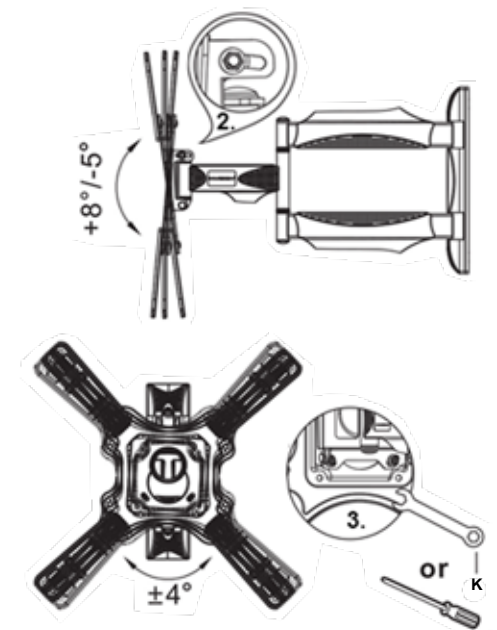
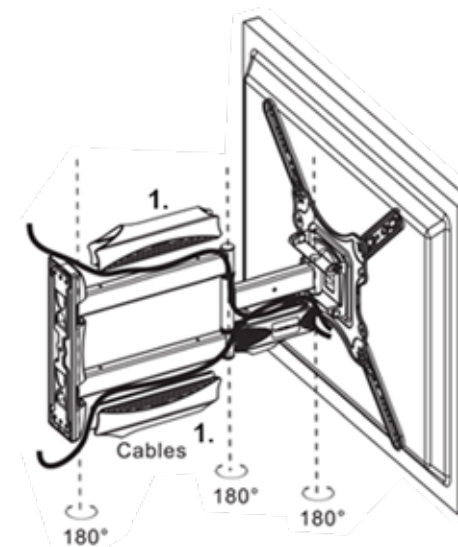
Now re-attach the plastic wall fixing plate covers.

Step 4b

Route your TV cables along the arms of bracket, leaving slack around the joints and clip the cable management pieces (1.) back on.

Now set tilting operation (2.) tighten to required torque so TV tilts freely by hand, but not on its own accord.

Directly behind the tilting bolts are 2x M6 securing bolts (3.) which can be loosened to adjust the horizontal level of your screen if required.



Troubleshooting:

Don't panic! In case of any issues with compatibility or for any advice on fitting, please contact our team at help@InvisionTechnology.co.uk and we will help you overcome any problems. All our products carry our Compatibility Promise.

Your installation is now complete - Sit back & enjoy!

To activate your 25 year warranty please email your Name, Order Number and Product Reference HDTV-E to warranty@InvisionTechnology.co.uk