



 Provider Choice

Your guide to NDIS PACE funding

We're always here to help.



Core Supports

Core Supports are flexible funds for daily life, letting you allocate your budget freely across the five categories.

Assistance with Daily Life

- Help with daily personal tasks like hygiene, getting dressed and moving around at home
- Help with household tasks like cleaning and yard maintenance
- Meal preparation
- Laundry service

**These are stated supports, meaning they need to be directly written in your plan for you to claim them.*

Assistance with Social, Economic and Community Participation

- Someone to take you out to your hobbies, classes or social events
- Group and centre-based activities
- Specialised support in the workforce

YPIRAC (Young People in Residential Aged Care) – Cross Billing

- Payments to the residential aged care facility where you live

Consumables

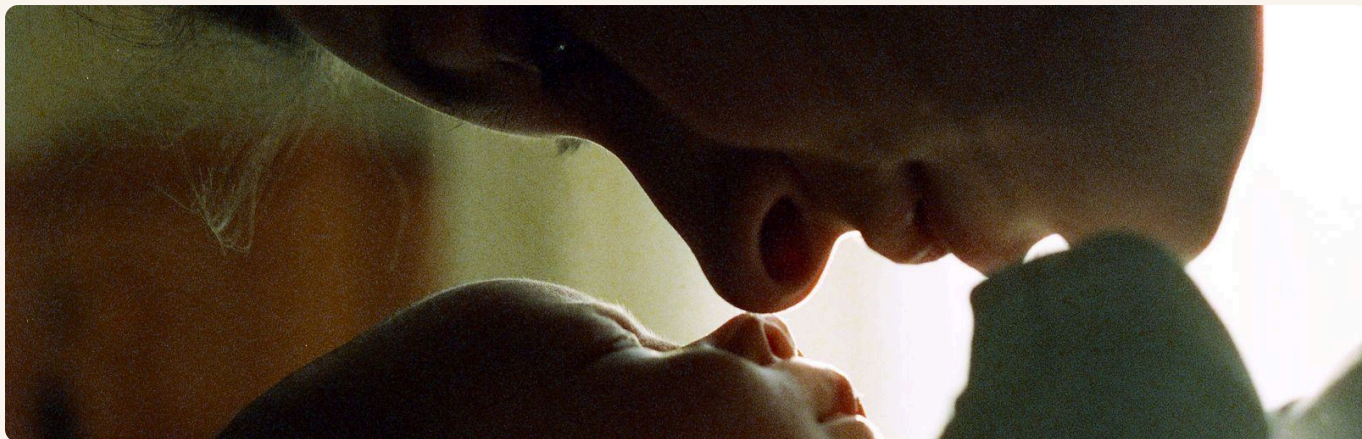
- Continence products
- A range of low-cost, low-risk items or tech to support your personal care, mobility, communication, vision or hearing
- Low-cost and low-risk items or tech related to prosthetics or orthotics
- Sign language training
- Interpretation or translation supports

Transport

- Taxis, Ubers or other alternatives to public transport, if catching public transport is difficult due to your disability

Home and Living

- Assistance while you're living in Supported Independent Living (SIL)
- Medium Term Accommodation
- Support exploring or planning an Individualised Living Option (ILO)



Capacity Building Supports

Supports for independent living, with fixed amounts per category—unlike Core Supports, you must stick to set limits.

Improved Daily Living Skills

- All allied health therapy, like occupational therapy, psychology, speech pathology, physiotherapy, exercise physiology and more
- Assessments and reports from therapists
- Supports that help you develop 'soft skills' and be independent
- Training for carers and parents to support their child's disability
- Health support from a nurse

Increased Social and Community Participation

- Supports or activities that increase your social and communication skills
- Mentoring or peer support
- Learning and skill-building opportunities to boost your confidence and ability to be part of your wider community

Choice and Control

- Plan management to process your NDIS invoices

Behaviour Support

- Positive behaviour support practitioner

Support Coordination and Psychosocial Recovery Coaches

- Support coordinator
- Specialist support coordinator
- Psychosocial recovery coach

Relationships

- Social skills support so you can have positive interactions with others

Lifelong Learning

- Help researching or applying for study opportunities after high school

Improved Living Arrangements

- Support to help you find and apply for housing or meet rental obligations

Finding and Keeping a Job

- Help moving from school to work (School Leaver Employment Support)
- Counselling or career coaching
- Group programs with a focus on work experience



Capital Supports

Funding for big-ticket items and services. You can only use it for what's stated in your plan and nothing else.

Assistive Technology

- Communication technology
- Hearing technology
- Vision equipment
- Mobility products (lifts, hoists, sit-to-stand chairs)
- Wheelchairs and related items
- Orthotics
- Prostheses
- Adapted furniture
- Assistance animals
- Environmental control systems

Home Modifications

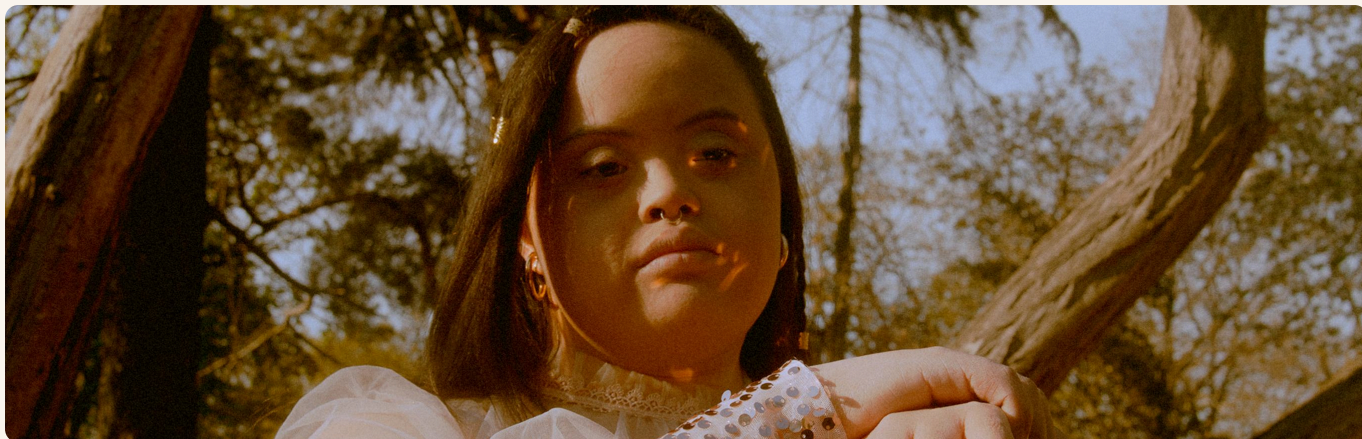
- Elevators
- Ramps
- Slip-resistant coating on surfaces
- Other custom-built modifications to your home
- Certification to approve home modifications
- Consultations with builders
- Professionals like project managers or building certifiers

Specialist Disability Accommodation

- Specialist Disability Accommodation (SDA) is a specially built home that includes all the modifications and inclusions you need if you have very high support needs

Assistive Technology Maintenance, Repair and Rental

- Short term rental or trial of assistive technology
- Repair and maintenance of your assistive technology
- A battery or charger for your wheelchair or scooter



Recurring Supports

Recurring Supports are paid to your bank regularly and used directly for listed support—no need to submit a claim.

Transport Recurring

- Taxis, Ubers or other alternatives to public transport, if catching public transport is difficult due to your disability