

WEEKLY PIGKILL REPORT

WEEK **32**
 WEEK ENDING **10/05/2026** (**RY 2025/2026**)



PYTD %Diff From YTD -
Weight (tonnes)

PYTD %Diff From YTD -
Count Incl Condemned

Imported Pork March 2026
Compared to March 2025

Prime Pigs -
This Week Prime Pigs -
Last Week

↑ **1.3%** ↑ **1.1%**

-11,700(t CWE)

PrimePig	Prime Pigs - This Week	Prime Pigs - Last Week
11,518	11,518	11,393
North Island	3,536	3,227
South Island	7,982	8,166

Date	IMPORTED PROD Year ending (t CWE)	DOMESTIC PROD year ending (t CWE)	Tonnes TOTAL PROD	IMPORTS %	Estimated POPULATION (000)	TOTAL CONSUMPTION PER CAPITA	Kg 100% NZPork	Kg Pork imports
Mar-26	65,139	43,148	108,287	60.15	5,353	20.23	8.06	12.2
Feb-26	65,973	42,825	108,798	60.64	5,350	20.34	8.00	12.3
Jan-26	66,955	42,713	109,667	61.05	5,348	20.51	7.99	12.5
Dec-25	69,099	42,315	111,414	62.02	5,344	20.85	7.92	12.9
Nov-25	71,422	42,503	113,925	62.69	5,345	21.31	7.95	13.4
Oct-25	71,605	42,663	114,268	62.66	5,348	21.37	7.98	13.4
Sept-25	73,793	42,724	116,517	63.33	5,346	21.80	7.99	13.8
Aug-25	74,966	42,544	117,511	63.80	5,345	21.98	7.96	14.0
Jul-25	76,928	42,757	119,685	64.28	5,343	22.40	8.00	14.4
Jun-25	77,592	42,626	120,218	64.54	5,337	22.53	7.99	14.5
May-25	77,637	42,284	119,921	64.74	5,338	22.47	7.92	14.5
Apr-25	78,182	42,353	120,535	64.86	5,343	22.56	7.93	14.6
Mar-25	76,839	42,451	119,290	64.41	5,272	22.63	8.05	14.6

Incl Condemned

Reporting Year	Week No.	Week Count	Year To Date Count	Annual Count	Annual Weight (tonne)	Average Weight (kg)
RY 2025/2026	32	11,807	356,885			
RY 2024/2025	32	11,634	352,912	580,939	43,603	75.06
RY 2023/2024	32	11,386	351,854	576,543	42,148	73.10
RY 2022/2023	32	12,237	380,729	607,340	43,430	71.51
RY 2021/2022	32	12,539	374,355	632,781	45,256	71.52

WEEKLY PIGKILL REPORT

WEEK **32**
 WEEK ENDING **10/05/2026** (**RY 2025/2026**)



Type / Location	WK # Carcasses (EC)	WK Weight (kg)	WK Avg Weight (kg)	YTD- Weight (tonnes)	PYTD- Weight (tonnes)	PYTD- Weight (tonnes) %Diff From YTD	WK # Condemned	WK # Total Kill	PWK- # Carcasses	PWK- #Carcasses %Diff From WK	YTD - # Carcasses	PYTD- # Carcasses	PYTD- # Carcasses %Diff From YTD
PrimePig	11,505	868,824	75.52	25,649	25,244	1.6%	13	11,518	11,393	1.1%	349,669	345,113	1.3%
North Island	3,531	258,735	73.28	7,761	7,613	1.9%	5	3,536	3,227	9.6%	107,954	107,822	0.1%
South Island	7,974	610,089	76.51	17,888	17,631	1.5%	8	7,982	8,166	-2.3%	241,715	237,291	1.9%
Total	11,505	868,824	75.52	25,649	25,244	1.6%	13	11,518	11,393	1.1%	349,669	345,113	1.3%

Type / Location	WK # Carcasses (EC)	WK Weight (kg)	WK Avg Weight (kg)	YTD- Weight (tonnes)	PYTD- Weight (tonnes)	PYTD- Weight (tonnes) %Diff From YTD	WK # Condemned	WK # Total Kill	PWK- # Carcasses	PWK- #Carcasses %Diff From WK	YTD - # Carcasses	PYTD- # Carcasses	PYTD- # Carcasses %Diff From YTD
PrimePig	11,505	868,824	75.52	25,649	25,244	1.6%	13	11,518	11,393	1.1%	349,669	345,113	1.3%
Pigs < 50 kg	176	5,597	31.80	236	265	-11.0%	6	182	139	30.9%	7,107	7,703	-7.7%
North Island	69	2,506	36.32	83	105	-21.3%	5	74	53	39.6%	2,184	2,767	-21.1%
South Island	107	3,091	28.89	153	160	-4.2%	1	108	86	25.6%	4,923	4,936	-0.3%
Pigs 50-64.9 kg	1,112	67,293	60.52	3,056	3,364	-9.2%	0	1,112	1,079	3.1%	50,703	55,925	-9.3%
North Island	419	25,212	60.17	1,093	1,359	-19.5%	0	419	398	5.3%	18,159	22,583	-19.6%
South Island	693	42,081	60.72	1,962	2,006	-2.2%	0	693	681	1.8%	32,544	33,342	-2.4%
Pigs 65-74.9 kg	4,456	314,986	70.69	10,428	10,213	2.1%	7	4,463	4,423	0.9%	148,782	146,179	1.8%
North Island	1,606	113,284	70.54	3,478	3,412	2.0%	0	1,606	1,470	9.3%	49,594	48,711	1.8%
South Island	2,850	201,702	70.77	6,949	6,802	2.2%	7	2,857	2,953	-3.3%	99,188	97,468	1.8%
Pigs 75-84.9 kg	3,752	297,693	79.34	7,577	6,547	15.7%	0	3,752	3,764	-0.3%	95,642	82,649	15.7%
North Island	1,124	89,153	79.32	2,321	2,186	6.2%	0	1,124	975	15.3%	29,292	27,620	6.1%
South Island	2,628	208,540	79.35	5,256	4,361	20.5%	0	2,628	2,789	-5.8%	66,350	55,029	20.6%
Pigs 85-94.9 kg	1,544	137,415	89.00	3,169	3,404	-6.9%	0	1,544	1,290	19.7%	35,534	38,033	-6.6%
North Island	208	18,407	88.50	684	501	36.5%	0	208	296	-29.7%	7,690	5,626	36.7%
South Island	1,336	119,008	89.08	2,484	2,902	-14.4%	0	1,336	994	34.4%	27,844	32,407	-14.1%
Pigs >95 kg	465	45,840	98.58	1,185	1,452	-18.4%	0	465	698	-33.4%	11,901	14,624	-18.6%
North Island	105	10,173	96.89	101	51	98.9%	0	105	35	200.0%	1,035	515	101.0%
South Island	360	35,667	99.08	1,084	1,401	-22.6%	0	360	663	-45.7%	10,866	14,109	-23.0%
Chopper	289	39,420	136.40	1,008	1,075	-6.2%	0	289	213	35.7%	7,216	7,799	-7.5%
Choppers	289	39,420	136.40	1,008	1,075	-6.2%	0	289	213	35.7%	7,216	7,799	-7.5%
North Island	47	7,392	157.28	244	259	-5.6%	0	47	57	-17.5%	1,616	1,807	-10.6%
South Island	242	32,028	132.35	763	816	-6.4%	0	242	156	55.1%	5,600	5,992	-6.5%
Total	11,794	908,244	77.01	26,657	26,319	1.3%	13	11,807	11,606	1.7%	356,885	352,912	1.1%

1. Information gathered weekly for all abattoirs licensed to kill pigs.

2. Includes carcasses (after removal of condemned parts) inspected and passed for human consumption, and whole carcasses condemned up to and at scales.

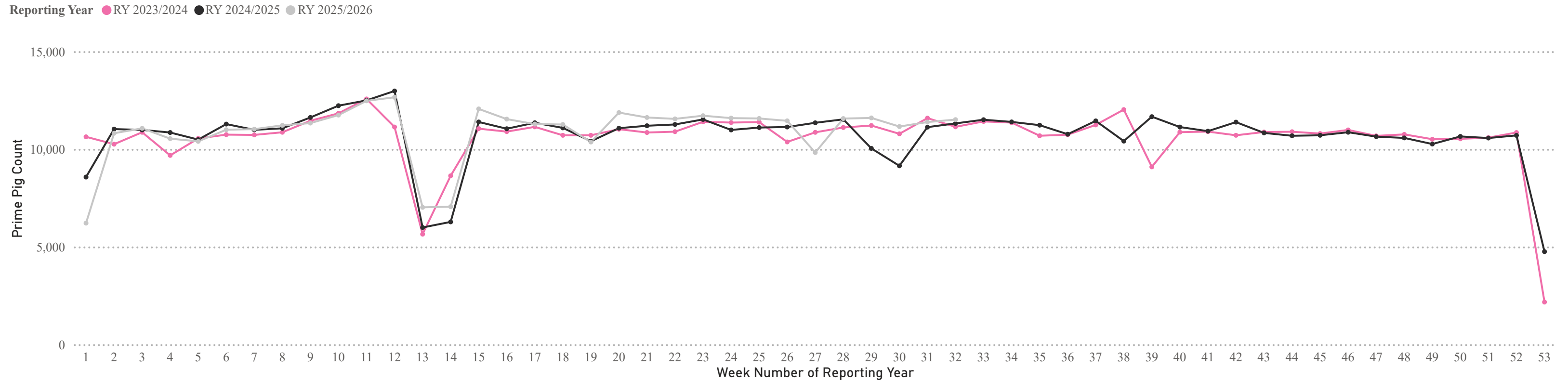
3. Meat Year (1 October - 30 September) week to date.

WEEKLY PIGKILL REPORT

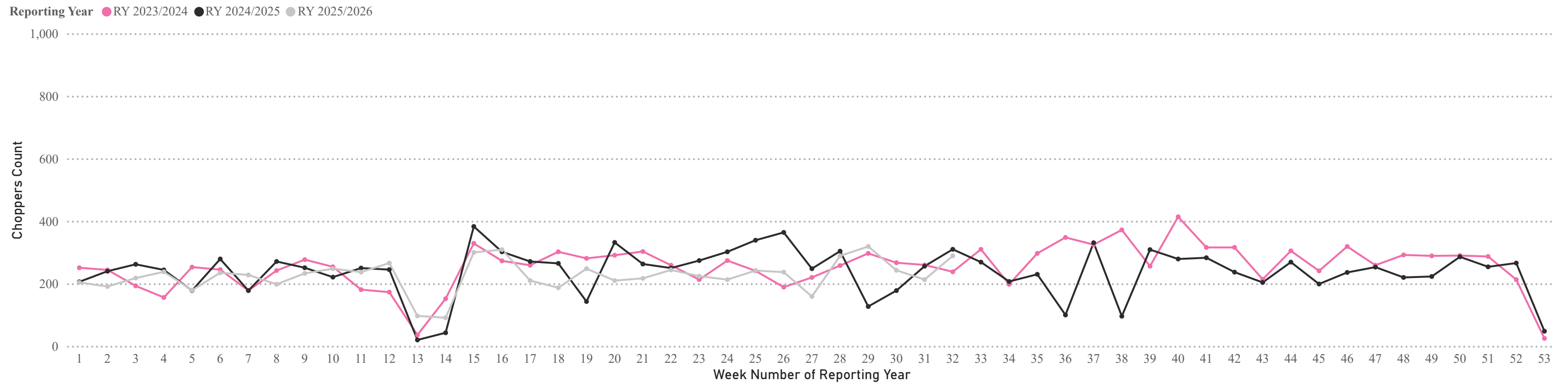
WEEK **32**
 WEEK ENDING **10/05/2026** (**RY 2025/2026**)



Weekly PIG KILL DATA (Prime Pigs)



Weekly PIG KILL DATA (Choppers)



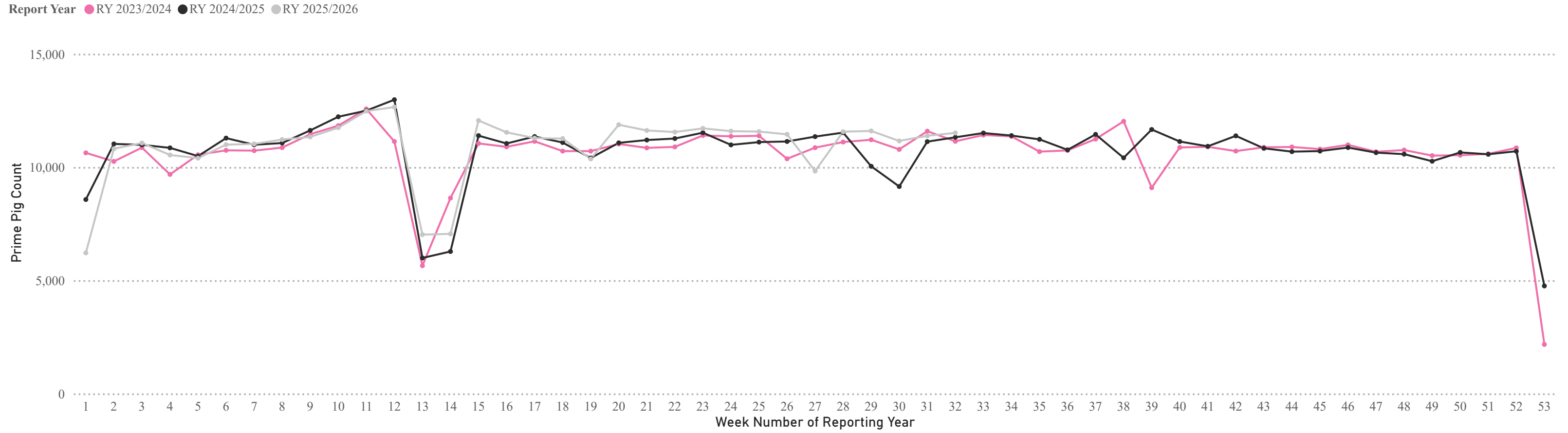
* Chopper and Prime Pig counts also include condemned carcasses

WEEKLY PIGKILL REPORT

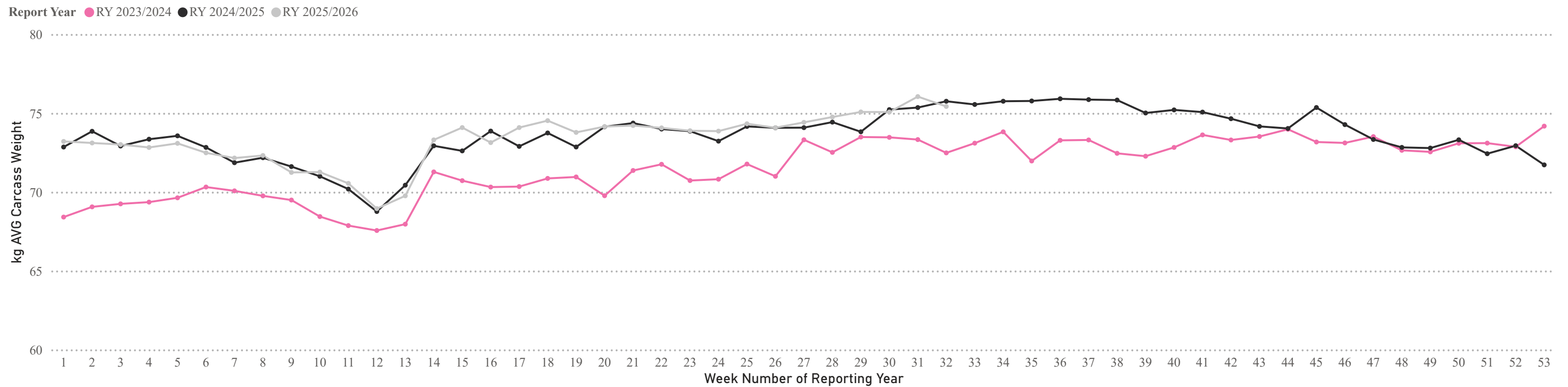
WEEK **32**
 WEEK ENDING **10/05/2026** (**RY 2025/2026**)



Weekly PIG KILL DATA (Prime Pigs)



Weekly AVG Carcass Weight - kg (Prime Pigs)



* Chopper and Prime Pig counts /Avg Weights also include condemned carcasses.