

WEEKLY PIGKILL REPORT

WEEK **33**
 WEEK ENDING **17/05/2026** (**RY 2025/2026**)



PYTD %Diff From YTD -
Weight (tonnes)



1.4%

PYTD %Diff From YTD -
Count Incl Condemned



1.2%

Imported Pork March 2026
Compared to March 2025

-11,700(t CWE)

Prime Pigs -
This Week

12,001

Prime Pigs -
Last Week

11,518

PrimePig

North Island

3,581

3,536

South Island

8,420

7,982

Date	IMPORTED PROD Year ending (t CWE)	DOMESTIC PROD year ending (t CWE)	Tonnes TOTAL PROD	IMPORTS %	Estimated POPULATION (000)	TOTAL CONSUMPTION PER CAPITA	Kg 100% NZPork	Kg Pork imports
Mar-26	65,139	43,148	108,287	60.15	5,353	20.23	8.06	12.2
Feb-26	65,973	42,825	108,798	60.64	5,350	20.34	8.00	12.3
Jan-26	66,955	42,713	109,667	61.05	5,348	20.51	7.99	12.5
Dec-25	69,099	42,315	111,414	62.02	5,344	20.85	7.92	12.9
Nov-25	71,422	42,503	113,925	62.69	5,345	21.31	7.95	13.4
Oct-25	71,605	42,663	114,268	62.66	5,348	21.37	7.98	13.4
Sept-25	73,793	42,724	116,517	63.33	5,346	21.80	7.99	13.8
Aug-25	74,966	42,544	117,511	63.80	5,345	21.98	7.96	14.0
Jul-25	76,928	42,757	119,685	64.28	5,343	22.40	8.00	14.4
Jun-25	77,592	42,626	120,218	64.54	5,337	22.53	7.99	14.5
May-25	77,637	42,284	119,921	64.74	5,338	22.47	7.92	14.5
Apr-25	78,182	42,353	120,535	64.86	5,343	22.56	7.93	14.6
Mar-25	76,839	42,451	119,290	64.41	5,272	22.63	8.05	14.6

Incl Condemned

Reporting Year	Week No.	Week Count	Year To Date Count	Annual Count	Annual Weight (tonne)	Average Weight (kg)
RY 2025/2026	33	12,324	369,209			
RY 2024/2025	33	11,782	364,694	580,939	43,603	75.06
RY 2023/2024	33	11,735	363,589	576,543	42,148	73.10
RY 2022/2023	33	11,871	392,600	607,340	43,430	71.51
RY 2021/2022	33	12,277	386,632	632,781	45,256	71.52

WEEKLY PIGKILL REPORT

WEEK **33**
 WEEK ENDING **17/05/2026** (**RY 2025/2026**)



Type / Location	WK # Carcasses (EC)	WK Weight (kg)	WK Avg Weight (kg)	YTD- Weight (tonnes)	PYTD- Weight (tonnes)	PYTD- Weight (tonnes) %Diff From YTD	WK # Condemned	WK # Total Kill	PWK- # Carcasses	PWK- #Carcasses %Diff From WK	YTD - # Carcasses	PYTD- # Carcasses	PYTD- # Carcasses %Diff From YTD
PrimePig	11,988	905,299	75.52	26,554	26,114	1.7%	13	12,001	11,518	4.2%	361,670	356,626	1.4%
North Island	3,579	267,334	74.70	8,028	7,868	2.0%	2	3,581	3,536	1.3%	111,535	111,325	0.2%
South Island	8,409	637,965	75.87	18,526	18,246	1.5%	11	8,420	7,982	5.5%	250,135	245,301	2.0%
Total	11,988	905,299	75.52	26,554	26,114	1.7%	13	12,001	11,518	4.2%	361,670	356,626	1.4%

Type / Location	WK # Carcasses (EC)	WK Weight (kg)	WK Avg Weight (kg)	YTD- Weight (tonnes)	PYTD- Weight (tonnes)	PYTD- Weight (tonnes) %Diff From YTD	WK # Condemned	WK # Total Kill	PWK- # Carcasses	PWK- #Carcasses %Diff From WK	YTD - # Carcasses	PYTD- # Carcasses	PYTD- # Carcasses %Diff From YTD
PrimePig	11,988	905,299	75.52	26,554	26,114	1.7%	13	12,001	11,518	4.2%	361,670	356,626	1.4%
Pigs < 50 kg	192	6,805	35.44	242	270	-10.1%	1	193	182	6.0%	7,300	7,864	-7.2%
North Island	70	2,890	41.29	86	108	-20.4%	0	70	74	-5.4%	2,254	2,830	-20.4%
South Island	122	3,915	32.09	157	162	-3.2%	1	123	108	13.9%	5,046	5,034	0.2%
Pigs 50-64.9 kg	1,112	67,024	60.27	3,123	3,439	-9.2%	0	1,112	1,112	0.0%	51,815	57,157	-9.3%
North Island	308	18,481	60.00	1,112	1,397	-20.4%	0	308	419	-26.5%	18,467	23,216	-20.5%
South Island	804	48,543	60.38	2,011	2,042	-1.5%	0	804	693	16.0%	33,348	33,941	-1.7%
Pigs 65-74.9 kg	4,869	343,727	70.59	10,772	10,525	2.3%	10	4,879	4,463	9.3%	153,661	150,622	2.0%
North Island	1,532	108,245	70.66	3,587	3,510	2.2%	1	1,533	1,606	-4.5%	51,127	50,105	2.0%
South Island	3,337	235,482	70.57	7,185	7,015	2.4%	9	3,346	2,857	17.1%	102,534	100,517	2.0%
Pigs 75-84.9 kg	3,650	289,273	79.25	7,866	6,820	15.3%	2	3,652	3,752	-2.7%	99,294	86,088	15.3%
North Island	1,240	98,585	79.50	2,420	2,268	6.7%	1	1,241	1,124	10.4%	30,533	28,659	6.5%
South Island	2,410	190,688	79.12	5,446	4,552	19.7%	1	2,411	2,628	-8.3%	68,761	57,429	19.7%
Pigs 85-94.9 kg	1,657	148,120	89.39	3,317	3,554	-6.7%	0	1,657	1,544	7.3%	37,191	39,713	-6.4%
North Island	326	29,080	89.20	713	531	34.3%	0	326	208	56.7%	8,016	5,961	34.5%
South Island	1,331	119,040	89.44	2,603	3,023	-13.9%	0	1,331	1,336	-0.4%	29,175	33,752	-13.6%
Pigs >95 kg	508	50,350	99.11	1,235	1,507	-18.1%	0	508	465	9.2%	12,409	15,182	-18.3%
North Island	103	10,053	97.60	111	55	103.3%	0	103	105	-1.9%	1,138	554	105.4%
South Island	405	40,297	99.50	1,124	1,452	-22.6%	0	405	360	12.5%	11,271	14,628	-22.9%
Chopper	322	44,592	138.48	1,052	1,111	-5.3%	1	323	289	11.8%	7,539	8,068	-6.6%
Choppers	322	44,592	138.48	1,052	1,111	-5.3%	1	323	289	11.8%	7,539	8,068	-6.6%
North Island	58	8,649	149.12	253	268	-5.7%	0	58	47	23.4%	1,674	1,871	-10.5%
South Island	264	35,943	136.15	799	843	-5.1%	1	265	242	9.5%	5,865	6,197	-5.4%
Total	12,310	949,891	77.16	27,607	27,225	1.4%	14	12,324	11,807	4.4%	369,209	364,694	1.2%

1. Information gathered weekly for all abattoirs licensed to kill pigs.

2. Includes carcasses (after removal of condemned parts) inspected and passed for human consumption, and whole carcasses condemned up to and at scales.

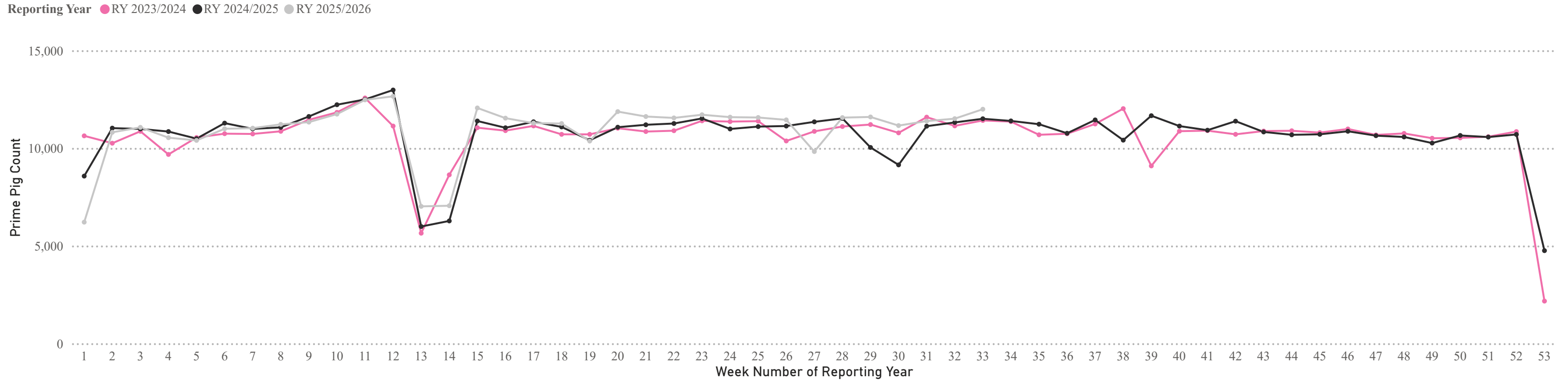
3. Meat Year (1 October - 30 September) week to date.

WEEKLY PIGKILL REPORT

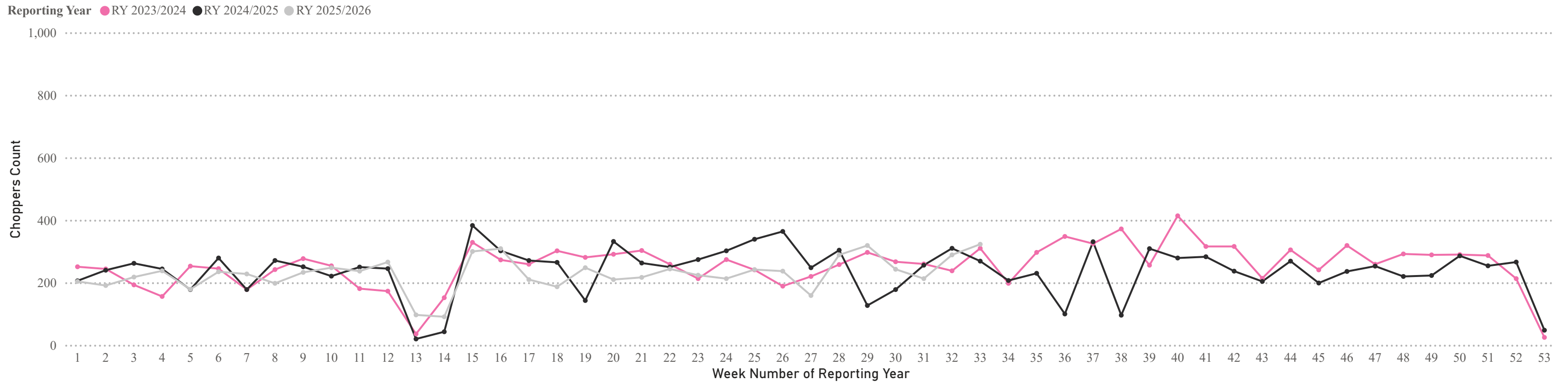
WEEK **33**
 WEEK ENDING **17/05/2026** (**RY 2025/2026**)



Weekly PIG KILL DATA (Prime Pigs)



Weekly PIG KILL DATA (Choppers)



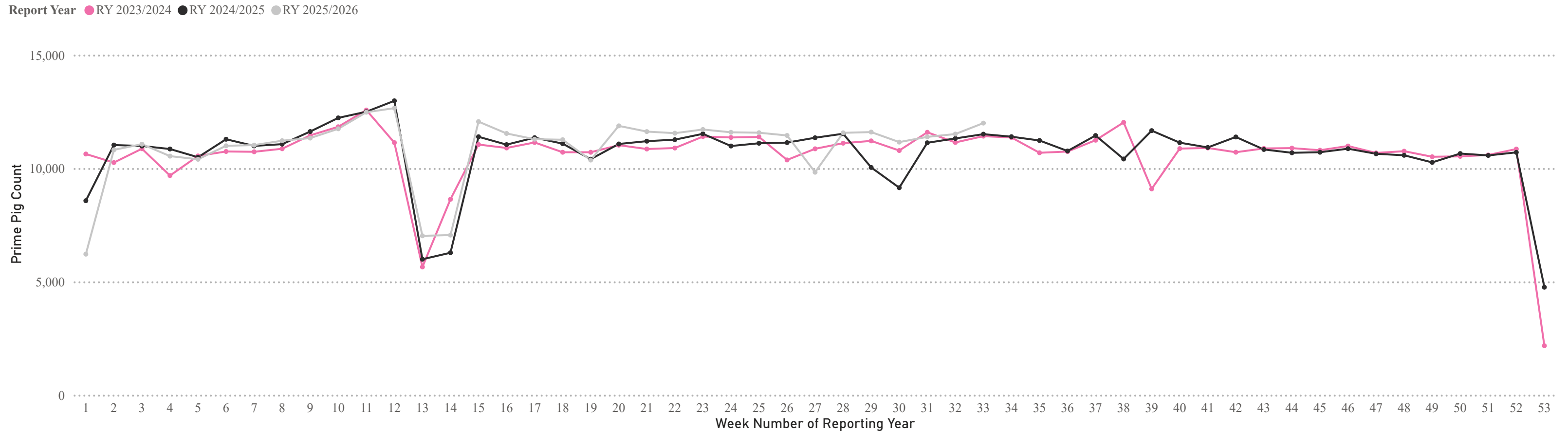
* Chopper and Prime Pig counts also include condemned carcasses

WEEKLY PIGKILL REPORT

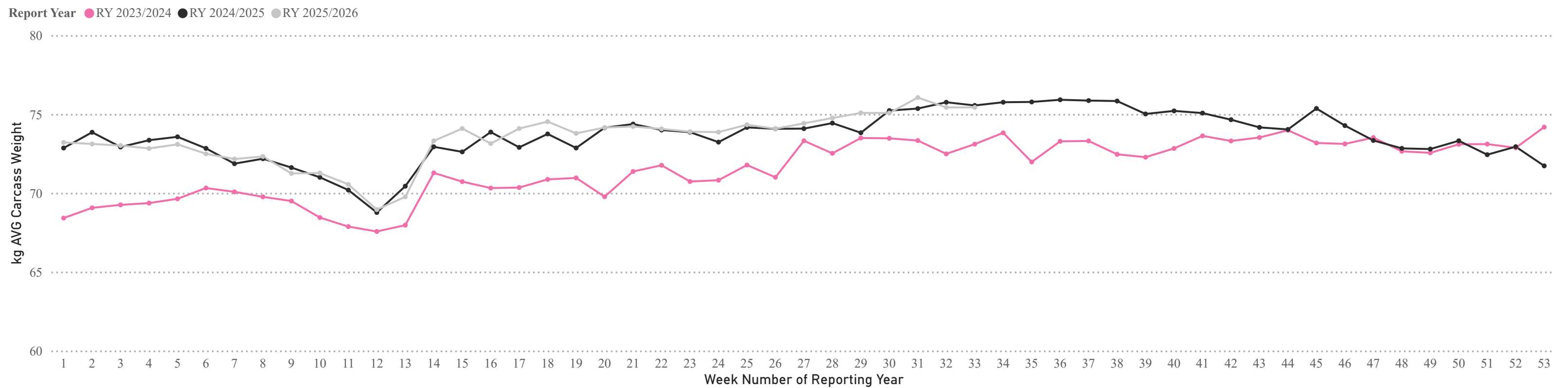
WEEK **33**
 WEEK ENDING **17/05/2026** (**RY 2025/2026**)



Weekly PIG KILL DATA (Prime Pigs)



Weekly AVG Carcass Weight - kg (Prime Pigs)



* Chopper and Prime Pig counts /Avg Weights also include condemned carcasses.