

WEEKLY PIGKILL REPORT

WEEK **34**
 WEEK ENDING **24/05/2026** (**RY 2025/2026**)



PYTD %Diff From YTD -
Weight (tonnes)

PYTD %Diff From YTD -
Count Incl Condemned

Imported Pork April 2026
Compared to April 2025

Prime Pigs -
This Week

Prime Pigs -
Last Week

↑ **1.6%** ↑ **1.4%**

-12,702(t CWE)

PrimePig	Prime Pigs - This Week	Prime Pigs - Last Week
PrimePig	12,172	12,001
North Island	3,751	3,581
South Island	8,421	8,420

Date	IMPORTED PROD Year ending (t CWE)	DOMESTIC PROD year ending (t CWE)	Tonnes TOTAL PROD	IMPORTS %	Estimated POPULATION (000)	TOTAL CONSUMPTION PER CAPITA	Kg 100% NZPork	Kg Pork imports
Apr-26	65,480	43,292	108,771	60.20	5,356	20.31	8.08	12.2
Mar-26	65,139	43,148	108,287	60.15	5,353	20.23	8.06	12.2
Feb-26	65,973	42,825	108,798	60.64	5,350	20.34	8.00	12.3
Jan-26	66,955	42,713	109,667	61.05	5,348	20.51	7.99	12.5
Dec-25	69,099	42,315	111,414	62.02	5,344	20.85	7.92	12.9
Nov-25	71,422	42,503	113,925	62.69	5,345	21.31	7.95	13.4
Oct-25	71,605	42,663	114,268	62.66	5,348	21.37	7.98	13.4
Sept-25	73,793	42,724	116,517	63.33	5,346	21.80	7.99	13.8
Aug-25	74,966	42,544	117,511	63.80	5,345	21.98	7.96	14.0
Jul-25	76,928	42,757	119,685	64.28	5,343	22.40	8.00	14.4
Jun-25	77,592	42,626	120,218	64.54	5,337	22.53	7.99	14.5
May-25	77,637	42,284	119,921	64.74	5,338	22.47	7.92	14.5
Apr-25	78,182	42,353	120,535	64.86	5,343	22.56	7.93	14.6

Incl Condemned

Reporting Year	Week No.	Week Count	Year To Date Count	Annual Count	Annual Weight (tonne)	Average Weight (kg)
RY 2025/2026	34	12,451	381,660			
RY 2024/2025	34	11,608	376,302	580,939	43,603	75.06
RY 2023/2024	34	11,565	375,154	576,543	42,148	73.10
RY 2022/2023	34	12,228	404,828	607,340	43,430	71.51
RY 2021/2022	34	12,834	399,466	632,781	45,256	71.52

DISCLAIMER: Pork production data is provisional and may be revised without notice. All due care has been taken in preparing this information, however New Zealand Pork does not guarantee its accuracy. To the extent possible New Zealand Pork's liability is excluded, and persons acting in reliance on the information do so at their own risk. This information is licensed under the Creative Commons Attribution-Noncommercial 3.0 New Zealand license

WEEKLY PIGKILL REPORT

WEEK **34**
 WEEK ENDING **24/05/2026** (**RY 2025/2026**)



Type / Location	WK # Carcasses (EC)	WK Weight (kg)	WK Avg Weight (kg)	YTD- Weight (tonnes)	PYTD- Weight (tonnes)	PYTD- Weight (tonnes) %Diff From YTD	WK # Condemned	WK # Total Kill	PWK- # Carcasses	PWK- #Carcasses %Diff From WK	YTD - # Carcasses	PYTD- # Carcasses	PYTD- # Carcasses %Diff From YTD
PrimePig	12,166	913,472	75.08	27,468	26,978	1.8%	6	12,172	12,001	1.4%	373,842	368,027	1.6%
North Island	3,750	280,746	74.87	8,309	8,132	2.2%	1	3,751	3,581	4.7%	115,286	114,978	0.3%
South Island	8,416	632,726	75.18	19,159	18,846	1.7%	5	8,421	8,420	0.0%	258,556	253,049	2.2%
Total	12,166	913,472	75.08	27,468	26,978	1.8%	6	12,172	12,001	1.4%	373,842	368,027	1.6%

Type / Location	WK # Carcasses (EC)	WK Weight (kg)	WK Avg Weight (kg)	YTD- Weight (tonnes)	PYTD- Weight (tonnes)	PYTD- Weight (tonnes) %Diff From YTD	WK # Condemned	WK # Total Kill	PWK- # Carcasses	PWK- #Carcasses %Diff From WK	YTD - # Carcasses	PYTD- # Carcasses	PYTD- # Carcasses %Diff From YTD
PrimePig	12,166	913,472	75.08	27,468	26,978	1.8%	6	12,172	12,001	1.4%	373,842	368,027	1.6%
Pigs < 50 kg	168	5,501	32.74	248	274	-9.4%	1	169	193	-12.4%	7,469	7,976	-6.4%
North Island	40	1,555	38.88	87	110	-20.7%	1	41	70	-41.4%	2,295	2,891	-20.6%
South Island	128	3,946	30.83	161	164	-1.8%	0	128	123	4.1%	5,174	5,085	1.8%
Pigs 50-64.9 kg	1,172	70,631	60.27	3,193	3,519	-9.3%	0	1,172	1,112	5.4%	52,987	58,484	-9.4%
North Island	291	17,369	59.69	1,129	1,442	-21.7%	0	291	308	-5.5%	18,758	23,975	-21.8%
South Island	881	53,262	60.46	2,064	2,077	-0.6%	0	881	804	9.6%	34,229	34,509	-0.8%
Pigs 65-74.9 kg	5,054	356,446	70.53	11,128	10,838	2.7%	3	5,057	4,879	3.6%	158,718	155,084	2.3%
North Island	1,575	111,182	70.59	3,698	3,607	2.5%	0	1,575	1,533	2.7%	52,702	51,490	2.4%
South Island	3,479	245,264	70.50	7,430	7,231	2.8%	3	3,482	3,346	4.1%	106,016	103,594	2.3%
Pigs 75-84.9 kg	3,894	309,117	79.38	8,175	7,078	15.5%	2	3,896	3,652	6.7%	103,190	89,338	15.5%
North Island	1,480	117,922	79.68	2,538	2,359	7.6%	0	1,480	1,241	19.3%	32,013	29,794	7.4%
South Island	2,414	191,195	79.20	5,637	4,719	19.5%	2	2,416	2,411	0.2%	71,177	59,544	19.5%
Pigs 85-94.9 kg	1,441	128,669	89.29	3,445	3,696	-6.8%	0	1,441	1,657	-13.0%	38,632	41,304	-6.5%
North Island	307	27,189	88.56	740	556	33.2%	0	307	326	-5.8%	8,323	6,239	33.4%
South Island	1,134	101,480	89.49	2,705	3,141	-13.9%	0	1,134	1,331	-14.8%	30,309	35,065	-13.6%
Pigs >95 kg	437	43,108	98.65	1,278	1,572	-18.7%	0	437	508	-14.0%	12,846	15,841	-18.9%
North Island	57	5,529	97.00	117	58	100.8%	0	57	103	-44.7%	1,195	589	102.9%
South Island	380	37,579	98.89	1,161	1,514	-23.3%	0	380	405	-6.2%	11,651	15,252	-23.6%
Chopper	276	39,705	143.86	1,092	1,139	-4.1%	3	279	323	-13.6%	7,818	8,275	-5.5%
Choppers	276	39,705	143.86	1,092	1,139	-4.1%	3	279	323	-13.6%	7,818	8,275	-5.5%
North Island	52	7,400	142.31	260	276	-5.8%	0	52	58	-10.3%	1,726	1,928	-10.5%
South Island	224	32,305	144.22	832	862	-3.6%	3	227	265	-14.3%	6,092	6,347	-4.0%
Total	12,442	953,177	76.61	28,560	28,117	1.6%	9	12,451	12,324	1.0%	381,660	376,302	1.4%

1. Information gathered weekly for all abattoirs licensed to kill pigs.

2. Includes carcasses (after removal of condemned parts) inspected and passed for human consumption, and whole carcasses condemned up to and at scales.

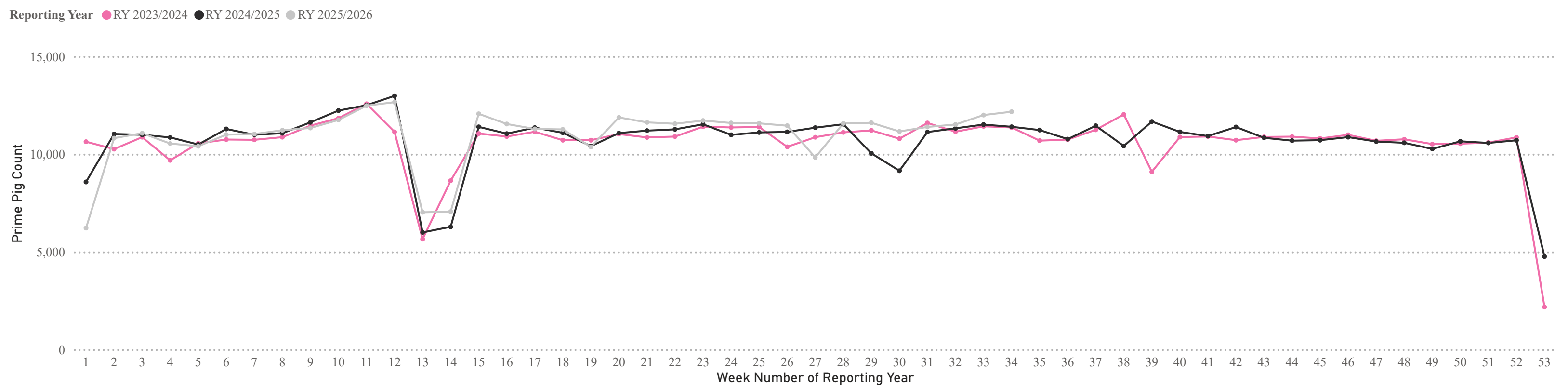
3. Meat Year (1 October - 30 September) week to date.

WEEKLY PIGKILL REPORT

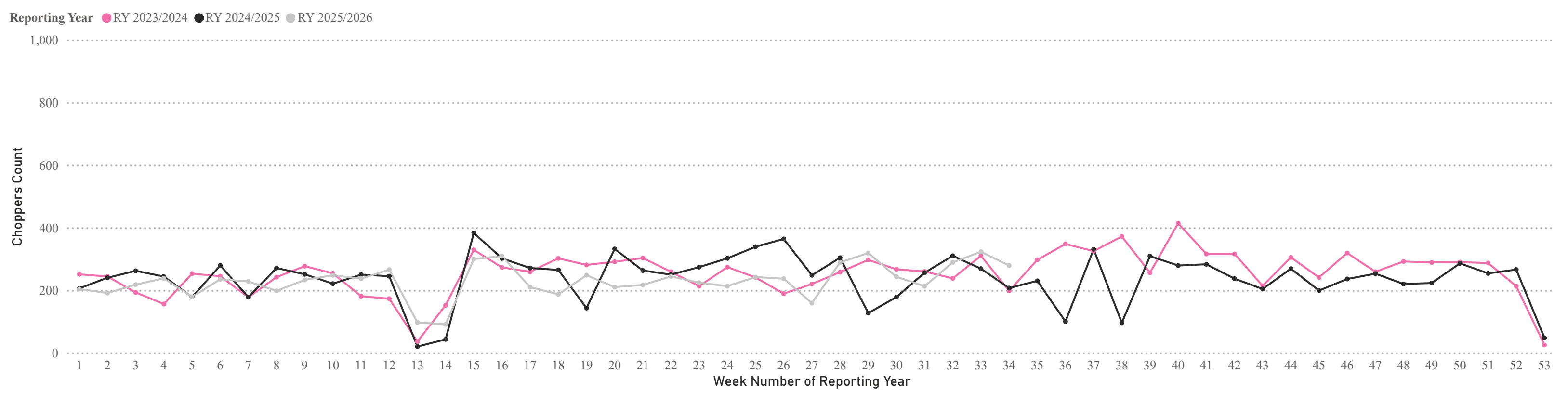
WEEK **34**
 WEEK ENDING **24/05/2026** (**RY 2025/2026**)



Weekly PIG KILL DATA (Prime Pigs)



Weekly PIG KILL DATA (Choppers)



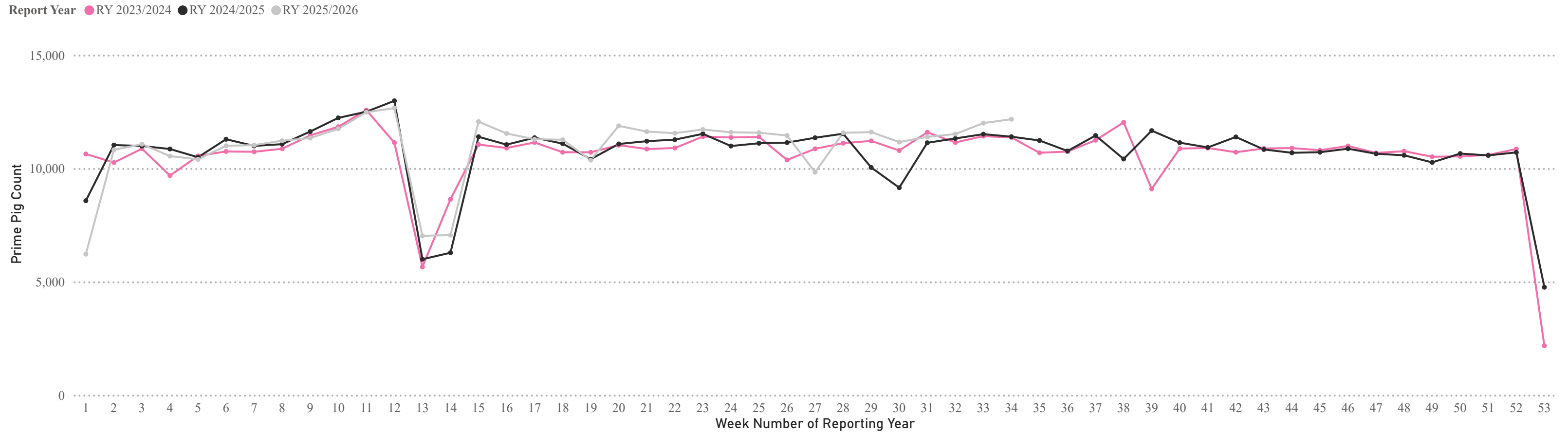
* Chopper and Prime Pig counts also include condemned carcasses

WEEKLY PIGKILL REPORT

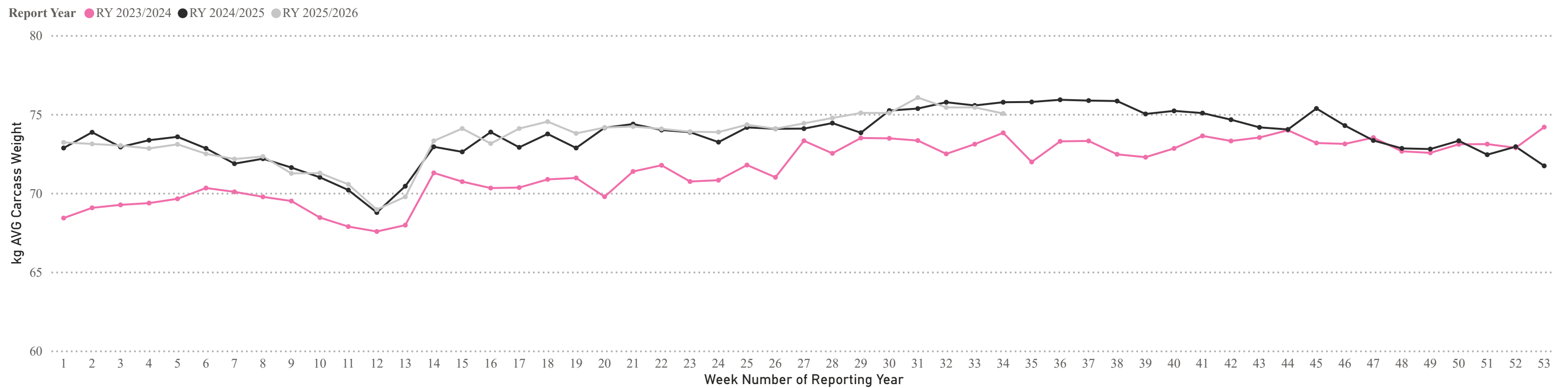
WEEK **34**
 WEEK ENDING **24/05/2026** (**RY 2025/2026**)



Weekly PIG KILL DATA (Prime Pigs)



Weekly AVG Carcass Weight - kg (Prime Pigs)



* Chopper and Prime Pig counts /Avg Weights also include condemned carcasses.