

WEEKLY PIGKILL REPORT

WEEK **35**
 WEEK ENDING **31/05/2026** (**RY 2025/2026**)



PYTD %Diff From YTD -
Weight (tonnes)



1.6%

PYTD %Diff From YTD -
Count Incl Condemned



1.5%

Imported Pork April 2026
Compared to April 2025

-12,702(t CWE)

Prime Pigs -
This Week

11,437

Prime Pigs -
Last Week

12,172

PrimePig

North Island

3,643

3,751

South Island

7,794

8,421

Date	IMPORTED PROD Year ending (t CWE)	DOMESTIC PROD year ending (t CWE)	Tonnes TOTAL PROD	IMPORTS %	Estimated POPULATION (000)	TOTAL CONSUMPTION PER CAPITA	Kg 100% NZPork	Kg Pork imports
Apr-26	65,480	43,292	108,771	60.20	5,356	20.31	8.08	12.2
Mar-26	65,139	43,148	108,287	60.15	5,353	20.23	8.06	12.2
Feb-26	65,973	42,825	108,798	60.64	5,350	20.34	8.00	12.3
Jan-26	66,955	42,713	109,667	61.05	5,348	20.51	7.99	12.5
Dec-25	69,099	42,315	111,414	62.02	5,344	20.85	7.92	12.9
Nov-25	71,422	42,503	113,925	62.69	5,345	21.31	7.95	13.4
Oct-25	71,605	42,663	114,268	62.66	5,348	21.37	7.98	13.4
Sept-25	73,793	42,724	116,517	63.33	5,346	21.80	7.99	13.8
Aug-25	74,966	42,544	117,511	63.80	5,345	21.98	7.96	14.0
Jul-25	76,928	42,757	119,685	64.28	5,343	22.40	8.00	14.4
Jun-25	77,592	42,626	120,218	64.54	5,337	22.53	7.99	14.5
May-25	77,637	42,284	119,921	64.74	5,338	22.47	7.92	14.5
Apr-25	78,182	42,353	120,535	64.86	5,343	22.56	7.93	14.6

Incl Condemned

Reporting Year	Week No.	Week Count	Year To Date Count	Annual Count	Annual Weight (tonne)	Average Weight (kg)
RY 2025/2026	35	11,765	393,425			
RY 2024/2025	35	11,464	387,766	580,939	43,603	75.06
RY 2023/2024	35	10,989	386,143	576,543	42,148	73.10
RY 2022/2023	35	11,791	416,619	607,340	43,430	71.51
RY 2021/2022	35	12,921	412,387	632,781	45,256	71.52

DISCLAIMER: Pork production data is provisional and may be revised without notice. All due care has been taken in preparing this information, however New Zealand Pork does not guarantee its accuracy. To the extent possible New Zealand Pork's liability is excluded, and persons acting in reliance on the information do so at their own risk. This information is licensed under the Creative Commons Attribution-Noncommercial 3.0 New Zealand license

WEEKLY PIGKILL REPORT

WEEK **35**
 WEEK ENDING **31/05/2026** (**RY 2025/2026**)



Type / Location	WK # Carcasses (EC)	WK Weight (kg)	WK Avg Weight (kg)	YTD- Weight (tonnes)	PYTD- Weight (tonnes)	PYTD- Weight (tonnes) %Diff From YTD	WK # Condemned	WK # Total Kill	PWK- # Carcasses	PWK- #Carcasses %Diff From WK	YTD - # Carcasses	PYTD- # Carcasses	PYTD- # Carcasses %Diff From YTD
PrimePig	11,425	849,793	74.38	28,318	27,829	1.8%	12	11,437	12,172	-6.0%	385,279	379,261	1.6%
North Island	3,635	268,396	73.84	8,578	8,393	2.2%	8	3,643	3,751	-2.9%	118,929	118,567	0.3%
South Island	7,790	581,397	74.63	19,740	19,436	1.6%	4	7,794	8,421	-7.4%	266,350	260,694	2.2%
Total	11,425	849,793	74.38	28,318	27,829	1.8%	12	11,437	12,172	-6.0%	385,279	379,261	1.6%

Type / Location	WK # Carcasses (EC)	WK Weight (kg)	WK Avg Weight (kg)	YTD- Weight (tonnes)	PYTD- Weight (tonnes)	PYTD- Weight (tonnes) %Diff From YTD	WK # Condemned	WK # Total Kill	PWK- # Carcasses	PWK- #Carcasses %Diff From WK	YTD - # Carcasses	PYTD- # Carcasses	PYTD- # Carcasses %Diff From YTD
PrimePig	11,425	849,793	74.38	28,318	27,829	1.8%	12	11,437	12,172	-6.0%	385,279	379,261	1.6%
Pigs < 50 kg	181	6,115	33.78	254	279	-8.8%	7	188	169	11.2%	7,657	8,134	-5.9%
North Island	65	2,658	40.89	90	112	-19.8%	7	72	41	75.6%	2,367	2,945	-19.6%
South Island	116	3,457	29.80	164	167	-1.4%	0	116	128	-9.4%	5,290	5,189	1.9%
Pigs 50-64.9 kg	1,373	82,672	60.21	3,276	3,597	-8.9%	0	1,373	1,172	17.2%	54,360	59,790	-9.1%
North Island	362	21,620	59.72	1,151	1,483	-22.4%	0	362	291	24.4%	19,120	24,657	-22.5%
South Island	1,011	61,052	60.39	2,125	2,115	0.5%	0	1,011	881	14.8%	35,240	35,133	0.3%
Pigs 65-74.9 kg	4,690	330,850	70.54	11,459	11,143	2.8%	2	4,692	5,057	-7.2%	163,410	159,445	2.5%
North Island	1,557	109,963	70.62	3,808	3,700	2.9%	0	1,557	1,575	-1.1%	54,259	52,815	2.7%
South Island	3,133	220,887	70.50	7,651	7,444	2.8%	2	3,135	3,482	-10.0%	109,151	106,630	2.4%
Pigs 75-84.9 kg	3,636	288,248	79.28	8,463	7,310	15.8%	3	3,639	3,896	-6.6%	106,829	92,244	15.8%
North Island	1,342	106,484	79.35	2,644	2,454	7.8%	1	1,343	1,480	-9.3%	33,356	30,983	7.7%
South Island	2,294	181,764	79.23	5,819	4,856	19.8%	2	2,296	2,416	-5.0%	73,473	61,261	19.9%
Pigs 85-94.9 kg	1,125	100,019	88.91	3,545	3,857	-8.1%	0	1,125	1,441	-21.9%	39,757	43,100	-7.8%
North Island	274	24,289	88.65	765	582	31.4%	0	274	307	-10.7%	8,597	6,534	31.6%
South Island	851	75,730	88.99	2,781	3,275	-15.1%	0	851	1,134	-25.0%	31,160	36,566	-14.8%
Pigs >95 kg	420	41,889	99.74	1,320	1,643	-19.7%	0	420	437	-3.9%	13,266	16,548	-19.8%
North Island	35	3,382	96.63	120	62	92.3%	0	35	57	-38.6%	1,230	633	94.3%
South Island	385	38,507	100.02	1,200	1,580	-24.1%	0	385	380	1.3%	12,036	15,915	-24.4%
Chopper	326	45,026	138.12	1,137	1,170	-2.8%	2	328	279	17.6%	8,146	8,505	-4.2%
Choppers	326	45,026	138.12	1,137	1,170	-2.8%	2	328	279	17.6%	8,146	8,505	-4.2%
North Island	52	7,600	146.15	268	283	-5.2%	1	53	52	1.9%	1,779	1,971	-9.7%
South Island	274	37,426	136.59	869	887	-2.1%	1	275	227	21.1%	6,367	6,534	-2.6%
Total	11,751	894,819	76.15	29,455	28,999	1.6%	14	11,765	12,451	-5.5%	393,425	387,766	1.5%

1. Information gathered weekly for all abattoirs licensed to kill pigs.

2. Includes carcasses (after removal of condemned parts) inspected and passed for human consumption, and whole carcasses condemned up to and at scales.

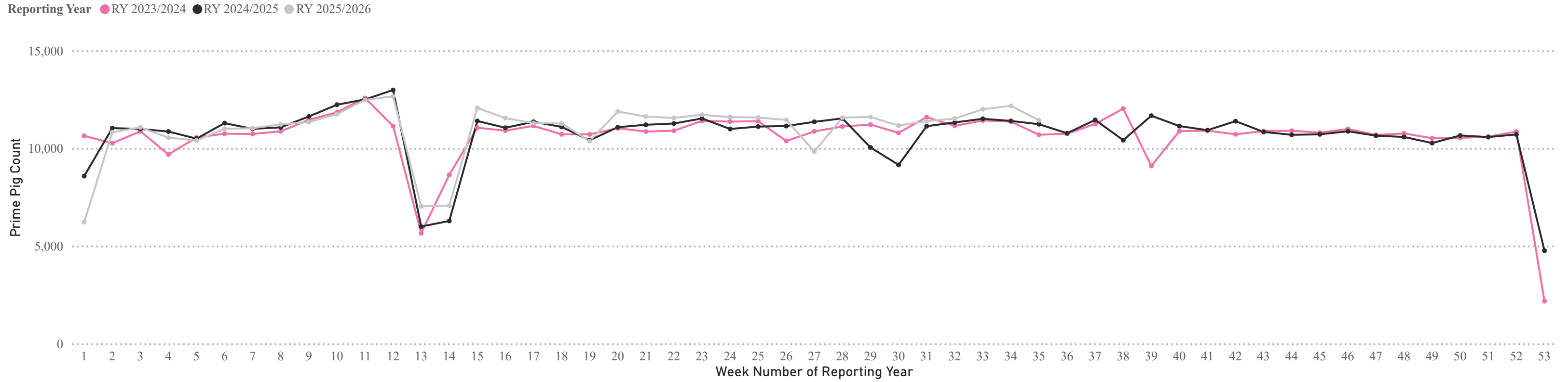
3. Meat Year (1 October - 30 September) week to date.

WEEKLY PIGKILL REPORT

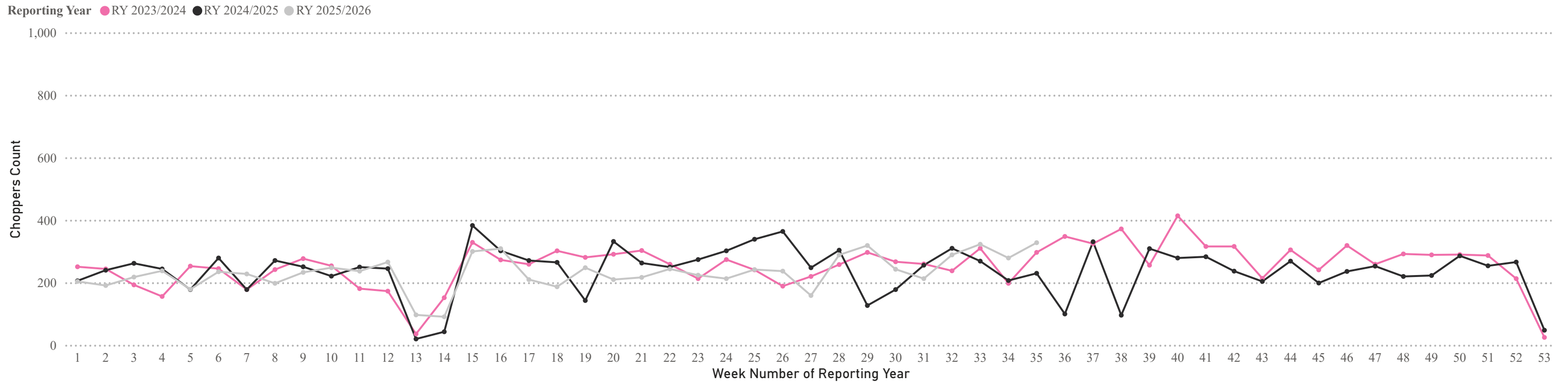
WEEK **35**
 WEEK ENDING **31/05/2026** (**RY 2025/2026**)



Weekly PIG KILL DATA (Prime Pigs)



Weekly PIG KILL DATA (Choppers)



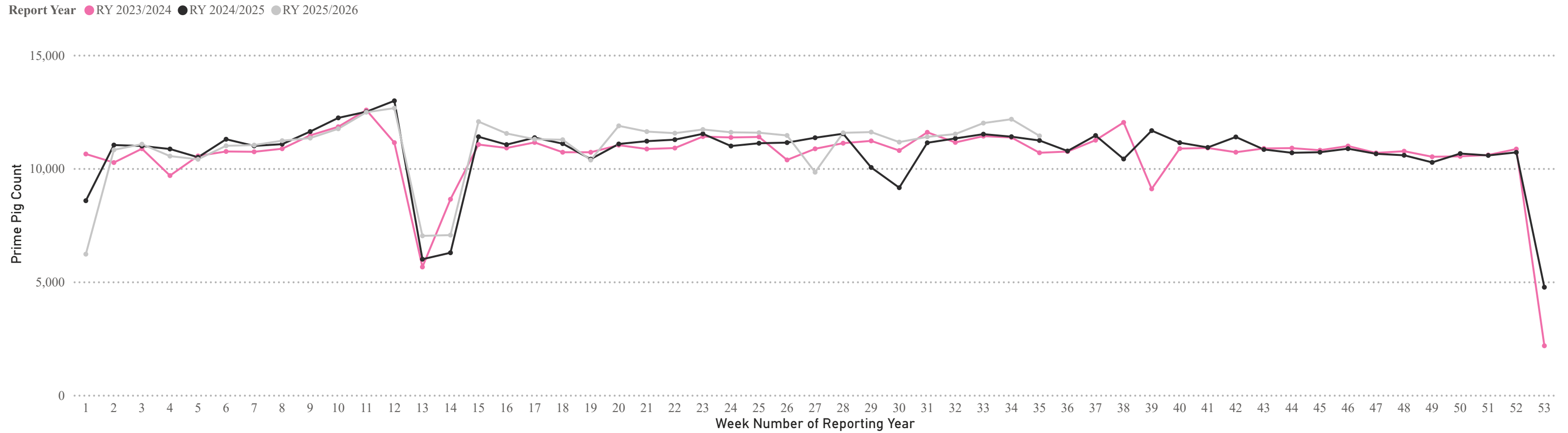
* Chopper and Prime Pig counts also include condemned carcasses

WEEKLY PIGKILL REPORT

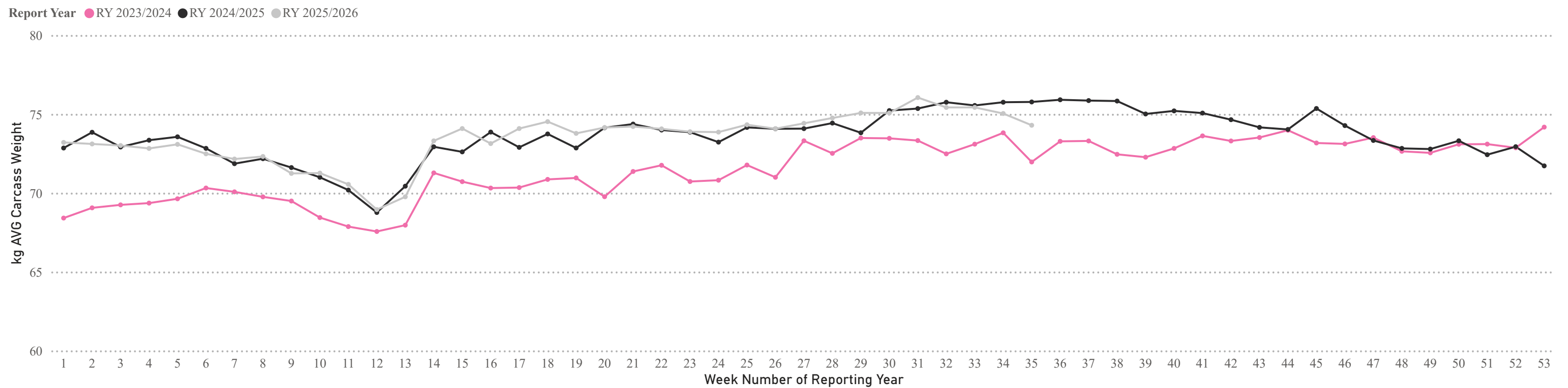
WEEK **35**
 WEEK ENDING **31/05/2026** (**RY 2025/2026**)



Weekly PIG KILL DATA (Prime Pigs)



Weekly AVG Carcass Weight - kg (Prime Pigs)



* Chopper and Prime Pig counts /Avg Weights also include condemned carcasses.