

WEEKLY PIGKILL REPORT

WEEK **37**
 WEEK ENDING **14/06/2026** (**RY 2025/2026**)



PYTD %Diff From YTD -
Weight (tonnes)



1.6%

PYTD %Diff From YTD -
Count Incl Condemned



1.5%

Imported Pork April 2026
Compared to April 2025

-12,702(t CWE)

Prime Pigs -
This Week

11,313

Prime Pigs -
Last Week

11,223

PrimePig

North Island

3,612

3,329

South Island

7,701

7,894

Date	IMPORTED PROD Year ending (t CWE)	DOMESTIC PROD year ending (t CWE)	Tonnes TOTAL PROD	IMPORTS %	Estimated POPULATION (000)	TOTAL CONSUMPTION PER CAPITA	Kg 100% NZPork	Kg Pork imports
Apr-26	65,480	43,292	108,771	60.20	5,356	20.31	8.08	12.2
Mar-26	65,139	43,148	108,287	60.15	5,353	20.23	8.06	12.2
Feb-26	65,973	42,825	108,798	60.64	5,350	20.34	8.00	12.3
Jan-26	66,955	42,713	109,667	61.05	5,348	20.51	7.99	12.5
Dec-25	69,099	42,315	111,414	62.02	5,344	20.85	7.92	12.9
Nov-25	71,422	42,503	113,925	62.69	5,345	21.31	7.95	13.4
Oct-25	71,605	42,663	114,268	62.66	5,348	21.37	7.98	13.4
Sept-25	73,793	42,724	116,517	63.33	5,346	21.80	7.99	13.8
Aug-25	74,966	42,544	117,511	63.80	5,345	21.98	7.96	14.0
Jul-25	76,928	42,757	119,685	64.28	5,343	22.40	8.00	14.4
Jun-25	77,592	42,626	120,218	64.54	5,337	22.53	7.99	14.5
May-25	77,637	42,284	119,921	64.74	5,338	22.47	7.92	14.5
Apr-25	78,182	42,353	120,535	64.86	5,343	22.56	7.93	14.6

Incl Condemned

Reporting Year	Week No.	Week Count	Year To Date Count	Annual Count	Annual Weight (tonne)	Average Weight (kg)
RY 2025/2026	37	11,661	416,492			
RY 2024/2025	37	11,784	410,420	580,939	43,603	75.06
RY 2023/2024	37	11,571	408,808	576,543	42,148	73.10
RY 2022/2023	37	12,097	439,635	607,340	43,430	71.51
RY 2021/2022	37	11,425	437,088	632,781	45,256	71.52

WEEKLY PIGKILL REPORT

WEEK **37**
 WEEK ENDING **14/06/2026** (**RY 2025/2026**)



Type / Location	WK # Carcasses (EC)	WK Weight (kg)	WK Avg Weight (kg)	YTD- Weight (tonnes)	PYTD- Weight (tonnes)	PYTD- Weight (tonnes) %Diff From YTD	WK # Condemned	WK # Total Kill	PWK- # Carcasses	PWK- #Carcasses %Diff From WK	YTD - # Carcasses	PYTD- # Carcasses	PYTD- # Carcasses %Diff From YTD
PrimePig	11,308	849,617	75.13	30,010	29,516	1.7%	5	11,313	11,223	0.8%	407,815	401,484	1.6%
North Island	3,612	267,753	74.13	9,096	8,911	2.1%	0	3,612	3,329	8.5%	125,870	125,576	0.2%
South Island	7,696	581,864	75.61	20,915	20,605	1.5%	5	7,701	7,894	-2.4%	281,945	275,908	2.2%
Total	11,308	849,617	75.13	30,010	29,516	1.7%	5	11,313	11,223	0.8%	407,815	401,484	1.6%

Type / Location	WK # Carcasses (EC)	WK Weight (kg)	WK Avg Weight (kg)	YTD- Weight (tonnes)	PYTD- Weight (tonnes)	PYTD- Weight (tonnes) %Diff From YTD	WK # Condemned	WK # Total Kill	PWK- # Carcasses	PWK- #Carcasses %Diff From WK	YTD - # Carcasses	PYTD- # Carcasses	PYTD- # Carcasses %Diff From YTD
PrimePig	11,308	849,617	75.13	30,010	29,516	1.7%	5	11,313	11,223	0.8%	407,815	401,484	1.6%
Pigs < 50 kg	155	5,780	37.29	265	287	-7.6%	1	156	162	-3.7%	7,975	8,375	-4.8%
North Island	63	2,536	40.25	94	115	-18.8%	0	63	30	110.0%	2,460	3,030	-18.8%
South Island	92	3,244	35.26	171	171	-0.0%	1	93	132	-29.5%	5,515	5,345	3.2%
Pigs 50-64.9 kg	1,242	74,868	60.28	3,416	3,729	-8.4%	0	1,242	1,079	15.1%	56,681	61,967	-8.5%
North Island	386	23,197	60.10	1,190	1,543	-22.8%	0	386	271	42.4%	19,777	25,644	-22.9%
South Island	856	51,671	60.36	2,225	2,187	1.8%	0	856	808	5.9%	36,904	36,323	1.6%
Pigs 65-74.9 kg	4,499	317,608	70.60	12,098	11,772	2.8%	4	4,503	4,534	-0.7%	172,447	168,400	2.4%
North Island	1,491	105,423	70.71	4,007	3,898	2.8%	0	1,491	1,313	13.6%	57,063	55,635	2.6%
South Island	3,008	212,185	70.54	8,091	7,874	2.8%	4	3,012	3,221	-6.5%	115,384	112,765	2.3%
Pigs 75-84.9 kg	3,675	291,753	79.39	9,064	7,813	16.0%	0	3,675	3,896	-5.7%	114,400	98,581	16.0%
North Island	1,320	104,829	79.42	2,858	2,639	8.3%	0	1,320	1,364	-3.2%	36,040	33,305	8.2%
South Island	2,355	186,924	79.37	6,206	5,175	19.9%	0	2,355	2,532	-7.0%	78,360	65,276	20.0%
Pigs 85-94.9 kg	1,285	114,613	89.19	3,761	4,161	-9.6%	0	1,285	1,138	12.9%	42,180	46,500	-9.3%
North Island	317	28,350	89.43	822	642	28.1%	0	317	325	-2.5%	9,239	7,203	28.3%
South Island	968	86,263	89.11	2,939	3,520	-16.5%	0	968	813	19.1%	32,941	39,297	-16.2%
Pigs >95 kg	452	44,995	99.55	1,407	1,753	-19.8%	0	452	414	9.2%	14,132	17,661	-20.0%
North Island	35	3,418	97.66	126	75	67.9%	0	35	26	34.6%	1,291	759	70.1%
South Island	417	41,577	99.71	1,281	1,678	-23.7%	0	417	388	7.5%	12,841	16,902	-24.0%
Chopper	347	48,916	140.97	1,211	1,229	-1.5%	1	348	183	90.2%	8,677	8,936	-2.9%
Choppers	347	48,916	140.97	1,211	1,229	-1.5%	1	348	183	90.2%	8,677	8,936	-2.9%
North Island	61	8,959	146.87	283	297	-4.8%	0	61	42	45.2%	1,882	2,070	-9.1%
South Island	286	39,957	139.71	928	931	-0.4%	1	287	141	103.5%	6,795	6,866	-1.0%
Total	11,655	898,533	77.09	31,221	30,744	1.6%	6	11,661	11,406	2.2%	416,492	410,420	1.5%

1. Information gathered weekly for all abattoirs licensed to kill pigs.

2. Includes carcasses (after removal of condemned parts) inspected and passed for human consumption, and whole carcasses condemned up to and at scales.

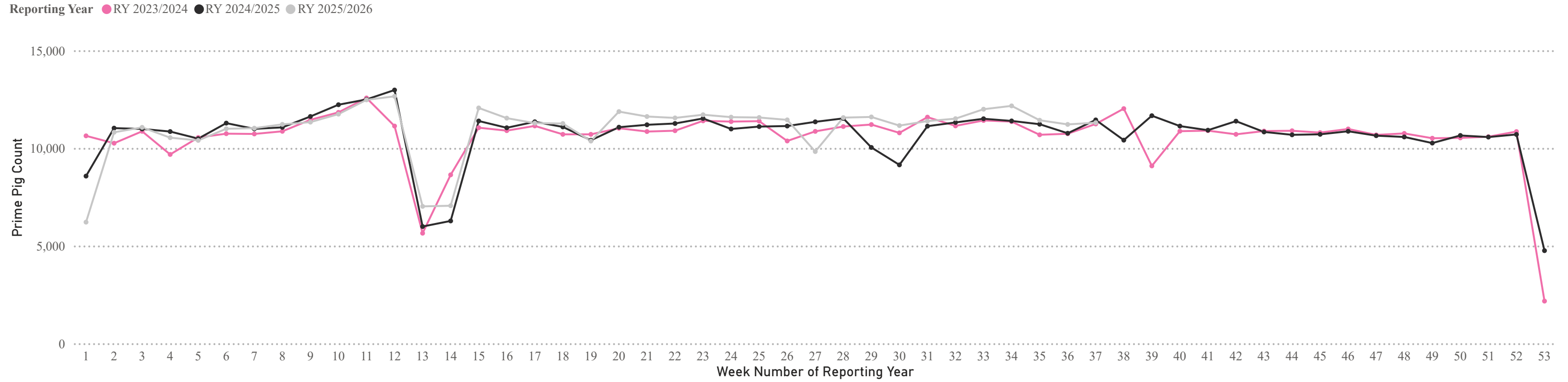
3. Meat Year (1 October - 30 September) week to date.

WEEKLY PIGKILL REPORT

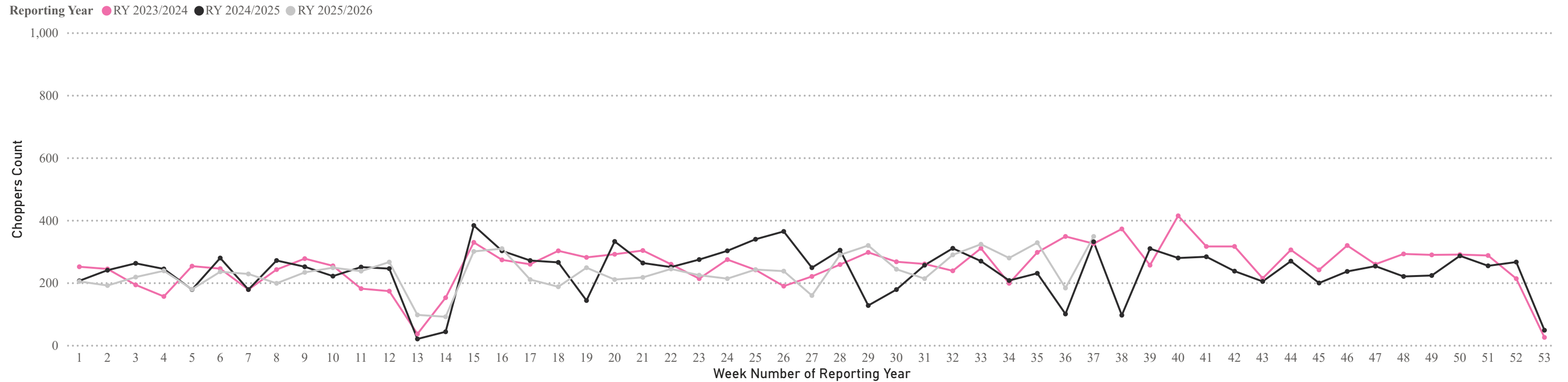
WEEK **37**
 WEEK ENDING **14/06/2026** (**RY 2025/2026**)



Weekly PIG KILL DATA (Prime Pigs)



Weekly PIG KILL DATA (Choppers)



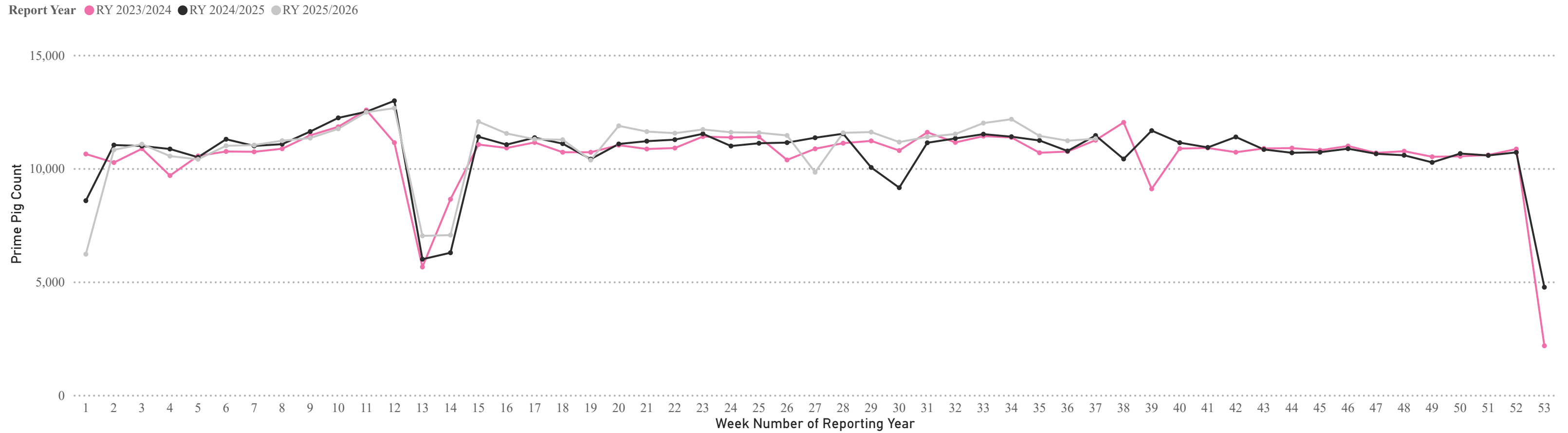
* Chopper and Prime Pig counts also include condemned carcasses

WEEKLY PIGKILL REPORT

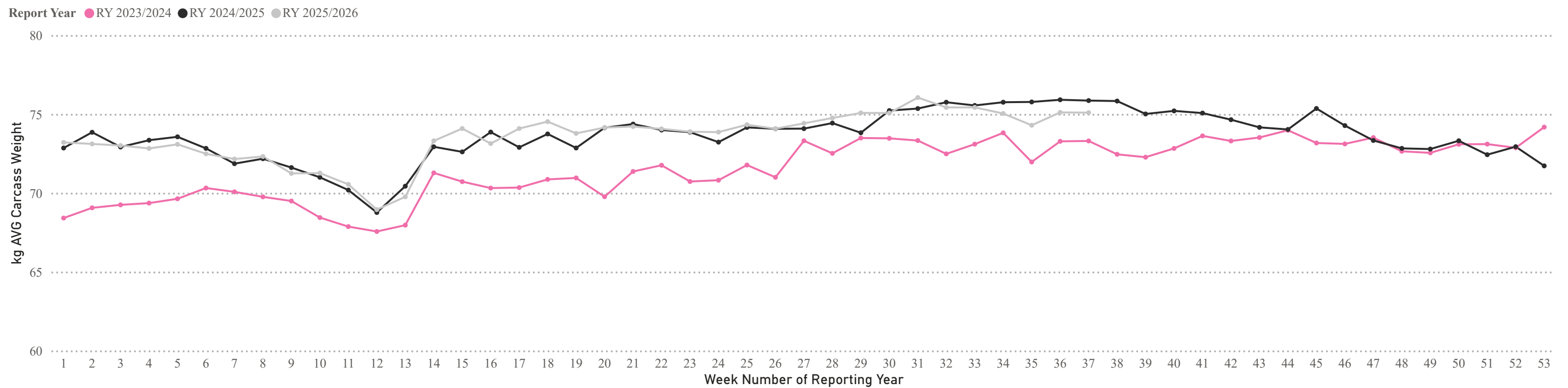
WEEK **37**
 WEEK ENDING **14/06/2026** (**RY 2025/2026**)



Weekly PIG KILL DATA (Prime Pigs)



Weekly AVG Carcass Weight - kg (Prime Pigs)



* Chopper and Prime Pig counts /Avg Weights also include condemned carcasses.