

WEEKLY PIGKILL REPORT

WEEK **38**
 WEEK ENDING **21/06/2026** (**RY 2025/2026**)



PYTD %Diff From YTD -
Weight (tonnes)



1.8%

PYTD %Diff From YTD -
Count Incl Condemned



1.7%

Imported Pork April 2026
Compared to April 2025

-12,702(t CWE)

Prime Pigs -
This Week

11,332

Prime Pigs -
Last Week

11,313

PrimePig

North Island

3,458

3,612

South Island

7,874

7,701

Date	IMPORTED PROD Year ending (t CWE)	DOMESTIC PROD year ending (t CWE)	Tonnes TOTAL PROD	IMPORTS %	Estimated POPULATION (000)	TOTAL CONSUMPTION PER CAPITA	Kg 100% NZPork	Kg Pork imports
Apr-26	65,480	43,292	108,771	60.20	5,356	20.31	8.08	12.2
Mar-26	65,139	43,148	108,287	60.15	5,353	20.23	8.06	12.2
Feb-26	65,973	42,825	108,798	60.64	5,350	20.34	8.00	12.3
Jan-26	66,955	42,713	109,667	61.05	5,348	20.51	7.99	12.5
Dec-25	69,099	42,315	111,414	62.02	5,344	20.85	7.92	12.9
Nov-25	71,422	42,503	113,925	62.69	5,345	21.31	7.95	13.4
Oct-25	71,605	42,663	114,268	62.66	5,348	21.37	7.98	13.4
Sept-25	73,793	42,724	116,517	63.33	5,346	21.80	7.99	13.8
Aug-25	74,966	42,544	117,511	63.80	5,345	21.98	7.96	14.0
Jul-25	76,928	42,757	119,685	64.28	5,343	22.40	8.00	14.4
Jun-25	77,592	42,626	120,218	64.54	5,337	22.53	7.99	14.5
May-25	77,637	42,284	119,921	64.74	5,338	22.47	7.92	14.5
Apr-25	78,182	42,353	120,535	64.86	5,343	22.56	7.93	14.6

Incl Condemned

Reporting Year	Week No.	Week Count	Year To Date Count	Annual Count	Annual Weight (tonne)	Average Weight (kg)
RY 2025/2026	38	11,593	428,085			
RY 2024/2025	38	10,514	420,934	580,939	43,603	75.06
RY 2023/2024	38	12,403	421,211	576,543	42,148	73.10
RY 2022/2023	38	11,611	451,246	607,340	43,430	71.51
RY 2021/2022	38	13,133	450,221	632,781	45,256	71.52

DISCLAIMER: Pork production data is provisional and may be revised without notice. All due care has been taken in preparing this information, however New Zealand Pork does not guarantee its accuracy. To the extent possible New Zealand Pork's liability is excluded, and persons acting in reliance on the information do so at their own risk. This information is licensed under the Creative Commons Attribution-Noncommercial 3.0 New Zealand license

WEEKLY PIGKILL REPORT

WEEK **38**
 WEEK ENDING **21/06/2026** (**RY 2025/2026**)



Type / Location	WK # Carcasses (EC)	WK Weight (kg)	WK Avg Weight (kg)	YTD- Weight (tonnes)	PYTD- Weight (tonnes)	PYTD- Weight (tonnes) %Diff From YTD	WK # Condemned	WK # Total Kill	PWK- # Carcasses	PWK- #Carcasses %Diff From WK	YTD - # Carcasses	PYTD- # Carcasses	PYTD- # Carcasses %Diff From YTD
PrimePig	11,315	849,279	75.06	30,860	30,306	1.8%	17	11,332	11,313	0.2%	419,147	411,902	1.8%
North Island	3,456	258,812	74.89	9,355	9,153	2.2%	2	3,458	3,612	-4.3%	129,328	128,901	0.3%
South Island	7,859	590,467	75.13	21,505	21,153	1.7%	15	7,874	7,701	2.2%	289,819	283,001	2.4%
Total	11,315	849,279	75.06	30,860	30,306	1.8%	17	11,332	11,313	0.2%	419,147	411,902	1.8%

Type / Location	WK # Carcasses (EC)	WK Weight (kg)	WK Avg Weight (kg)	YTD- Weight (tonnes)	PYTD- Weight (tonnes)	PYTD- Weight (tonnes) %Diff From YTD	WK # Condemned	WK # Total Kill	PWK- # Carcasses	PWK- #Carcasses %Diff From WK	YTD - # Carcasses	PYTD- # Carcasses	PYTD- # Carcasses %Diff From YTD
PrimePig	11,315	849,279	75.06	30,860	30,306	1.8%	17	11,332	11,313	0.2%	419,147	411,902	1.8%
Pigs < 50 kg	169	5,646	33.41	271	293	-7.6%	1	170	156	9.0%	8,145	8,579	-5.1%
North Island	48	1,952	40.67	96	118	-19.1%	1	49	63	-22.2%	2,509	3,098	-19.0%
South Island	121	3,694	30.53	175	175	0.2%	0	121	93	30.1%	5,636	5,481	2.8%
Pigs 50-64.9 kg	1,263	76,281	60.40	3,492	3,794	-8.0%	3	1,266	1,242	1.9%	57,947	63,045	-8.1%
North Island	280	17,049	60.89	1,207	1,576	-23.4%	0	280	386	-27.5%	20,057	26,193	-23.4%
South Island	983	59,232	60.26	2,285	2,219	3.0%	3	986	856	15.2%	37,890	36,852	2.8%
Pigs 65-74.9 kg	4,285	302,619	70.62	12,400	12,053	2.9%	11	4,296	4,503	-4.6%	176,743	172,421	2.5%
North Island	1,371	97,211	70.91	4,104	3,992	2.8%	0	1,371	1,491	-8.0%	58,434	56,976	2.6%
South Island	2,914	205,408	70.49	8,297	8,061	2.9%	11	2,925	3,012	-2.9%	118,309	115,445	2.5%
Pigs 75-84.9 kg	3,877	307,496	79.31	9,371	8,045	16.5%	2	3,879	3,675	5.6%	118,279	101,489	16.5%
North Island	1,443	114,395	79.28	2,972	2,722	9.2%	1	1,444	1,320	9.4%	37,484	34,358	9.1%
South Island	2,434	193,101	79.33	6,400	5,322	20.2%	1	2,435	2,355	3.4%	80,795	67,131	20.4%
Pigs 85-94.9 kg	1,330	118,529	89.12	3,880	4,292	-9.6%	0	1,330	1,285	3.5%	43,510	47,954	-9.3%
North Island	287	25,579	89.13	848	665	27.5%	0	287	317	-9.5%	9,526	7,462	27.7%
South Island	1,043	92,950	89.12	3,032	3,627	-16.4%	0	1,043	968	7.7%	33,984	40,492	-16.1%
Pigs >95 kg	391	38,708	99.00	1,446	1,829	-21.0%	0	391	452	-13.5%	14,523	18,414	-21.1%
North Island	27	2,626	97.26	129	80	59.7%	0	27	35	-22.9%	1,318	814	61.9%
South Island	364	36,082	99.13	1,317	1,749	-24.7%	0	364	417	-12.7%	13,205	17,600	-25.0%
Chopper	260	37,137	142.83	1,248	1,241	0.6%	1	261	348	-25.0%	8,938	9,032	-1.0%
Choppers	260	37,137	142.83	1,248	1,241	0.6%	1	261	348	-25.0%	8,938	9,032	-1.0%
North Island	58	9,010	155.34	292	302	-3.4%	0	58	61	-4.9%	1,940	2,109	-8.0%
South Island	202	28,127	139.24	956	939	1.8%	1	203	287	-29.3%	6,998	6,923	1.1%
Total	11,575	886,416	76.58	32,107	31,546	1.8%	18	11,593	11,661	-0.6%	428,085	420,934	1.7%

1. Information gathered weekly for all abattoirs licensed to kill pigs.

2. Includes carcasses (after removal of condemned parts) inspected and passed for human consumption, and whole carcasses condemned up to and at scales.

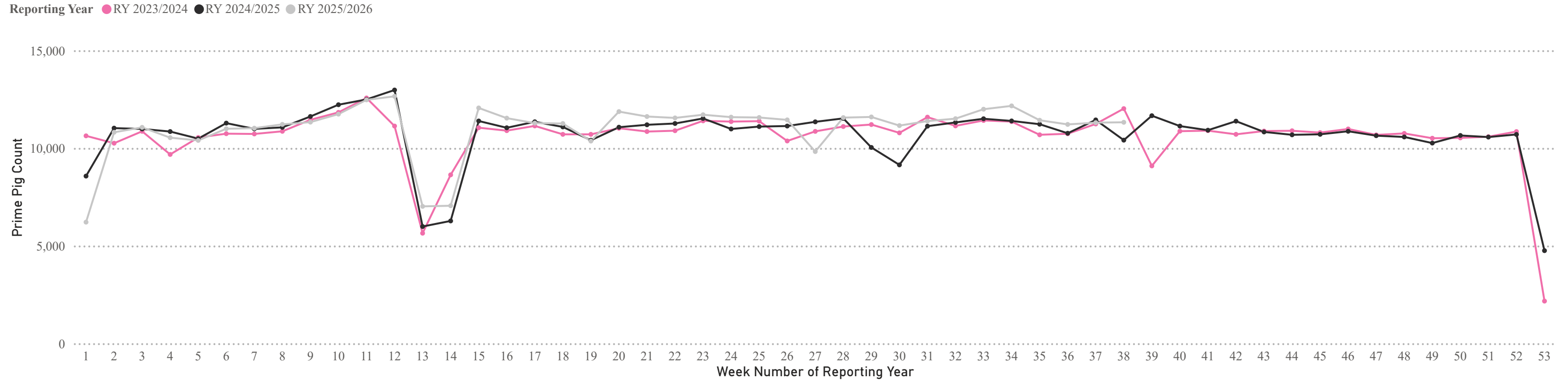
3. Meat Year (1 October - 30 September) week to date.

WEEKLY PIGKILL REPORT

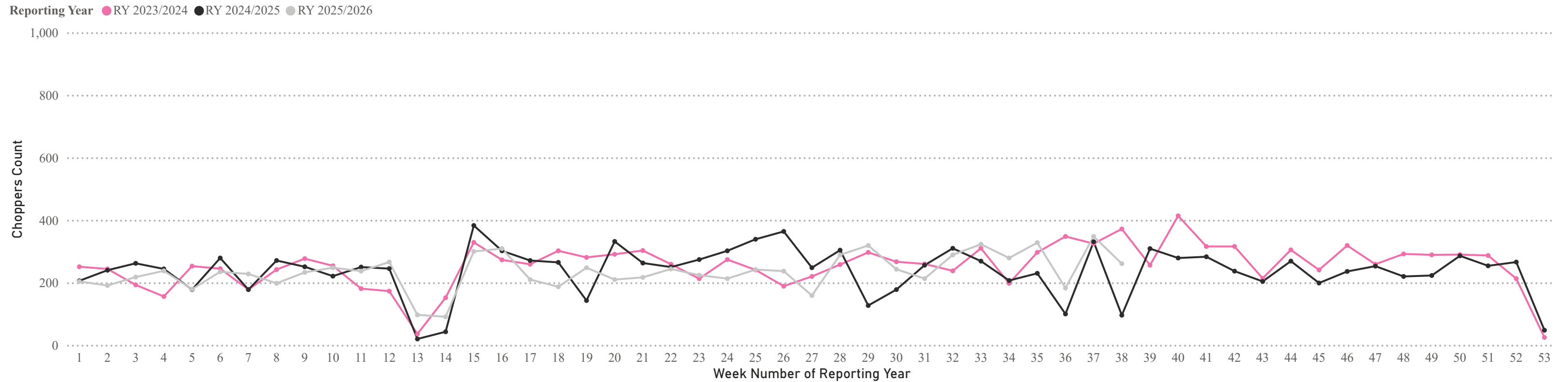
WEEK **38**
WEEK ENDING **21/06/2026** (**RY 2025/2026**)



Weekly PIG KILL DATA (Prime Pigs)



Weekly PIG KILL DATA (Choppers)



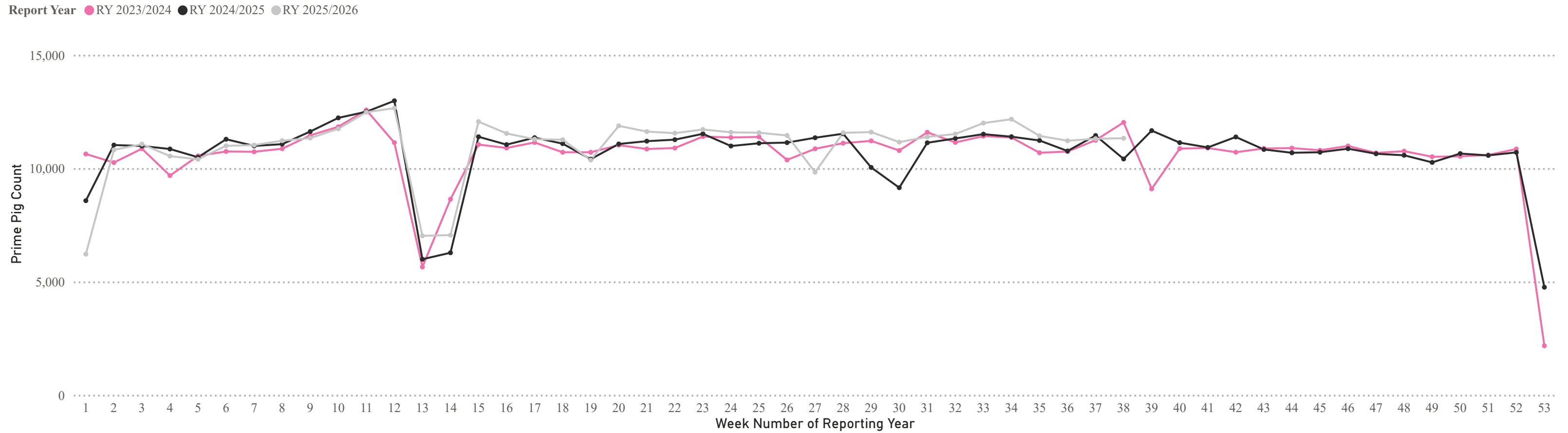
* Chopper and Prime Pig counts also include condemned carcasses

WEEKLY PIGKILL REPORT

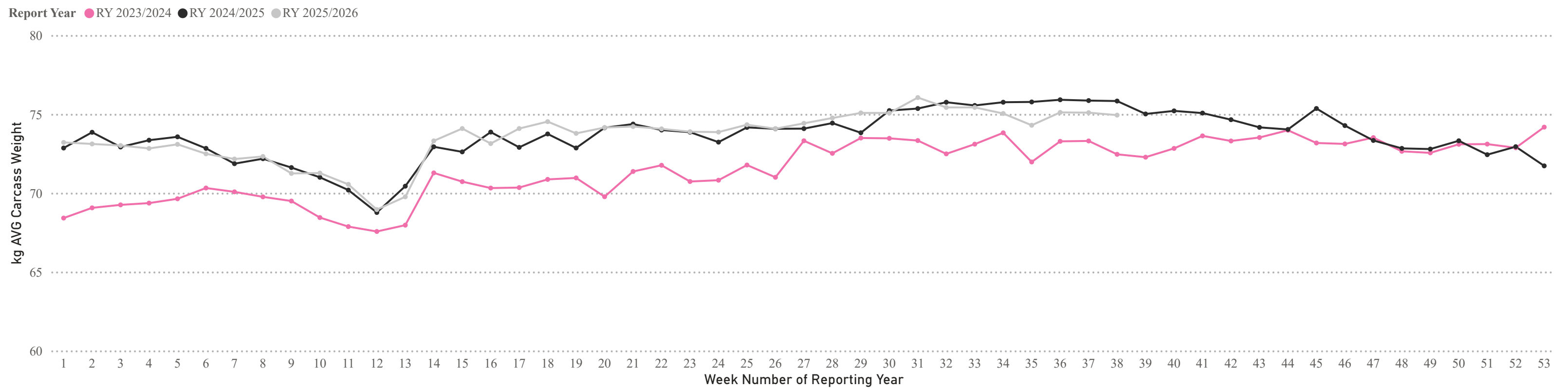
WEEK **38**
 WEEK ENDING **21/06/2026** (**RY 2025/2026**)



Weekly PIG KILL DATA (Prime Pigs)



Weekly AVG Carcass Weight - kg (Prime Pigs)



* Chopper and Prime Pig counts /Avg Weights also include condemned carcasses.