



# REPORTING

## JOE & THE JUICE NORDIC TRAINING REPORTING



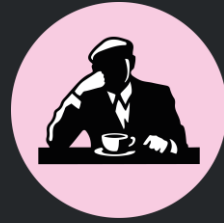
### DEFINITION

A performance dashboard that summarizes training compliance, workforce metrics, budget usage, and store performance.

It provides a quick overview of key indicators such as training completion rates, employee coverage, budget vs. actual spending, and regional/store growth, enabling managers to monitor progress, identify gaps, and make data-driven decisions.

### SUPPORTING REPORTING





**THANK YOU**

[JOEJUICE.COM](http://JOEJUICE.COM)