



RIVERWALK LANDING  
55+ RESORT COMMUNITY

## 202 Skipjack Lane

**Palm Harbor Homes: The Hayden**  
**957 sq ft | 2 bed / 2 bath | \$159,900 (Resale)**

This home redefines modern living with a cozy 957-square-foot space. The thoughtfully designed open layout features 2 bedrooms and 2 bathrooms, seamlessly integrating the living areas for a fluid and inviting atmosphere. The kitchen boasts a practical central island, serving as a social hub perfect for gatherings. Washer and dryer are included. The master bathroom offers a private retreat for ultimate relaxation. Enhancing its appeal is a charming front porch, complemented by the serene backdrop of a nature reserve, providing a peaceful setting to unwind and connect with nature.



RiverwalkLandingFL.com | 10 Blackfin Drive, Freeport, Florida 32439  
Contact Cerenna Solecki at 850-259-2758 to schedule a tour today!



RIVERWALK LANDING  
55+ RESORT COMMUNITY



RiverwalkLandingFL.com | 10 Blackfin Drive, Freeport, Florida 32439  
Contact Cerenna Solecki at 850-259-2758 to schedule a tour today!





# RIVERWALK LANDING

55+ RESORT COMMUNITY



RiverwalkLandingFL.com | 10 Blackfin Drive, Freeport, Florida 32439  
Contact Cerenna Solecki at 850-259-2758 to schedule a tour today!



RIVERWALK LANDING  
55+ RESORT COMMUNITY



RiverwalkLandingFL.com | 10 Blackfin Drive, Freeport, Florida 32439  
Contact Cerenna Solecki at 850-259-2758 to schedule a tour today!



RIVERWALK LANDING  
55+ RESORT COMMUNITY



RiverwalkLandingFL.com | 10 Blackfin Drive, Freeport, Florida 32439  
Contact Cerenna Solecki at 850-259-2758 to schedule a tour today!

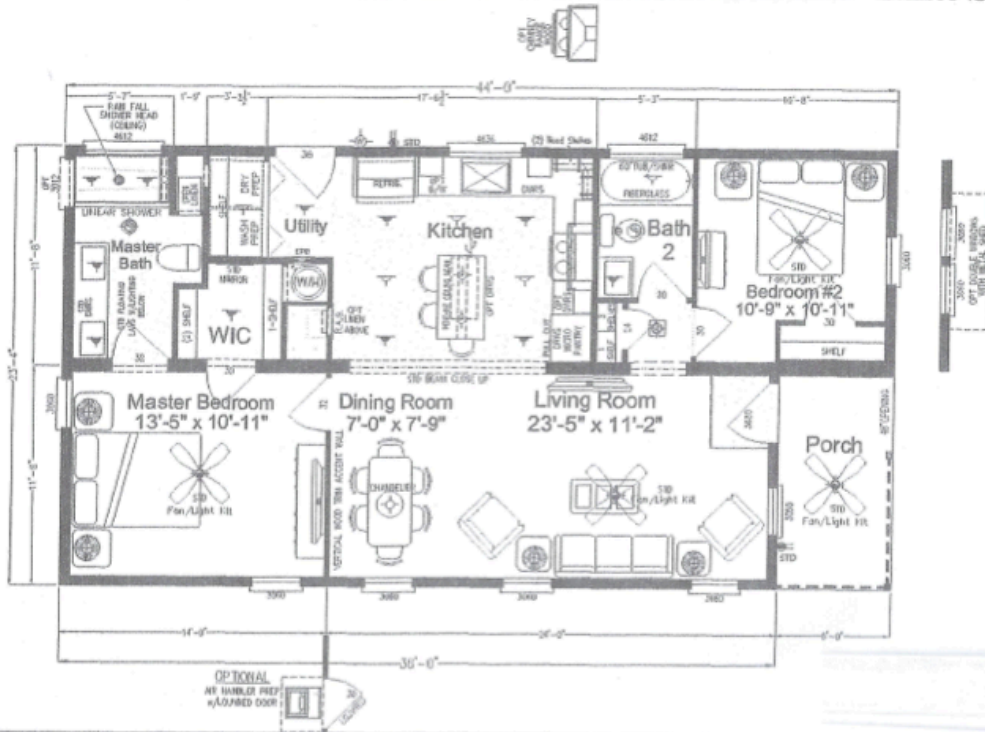




# RIVERWALK LANDING

55+ RESORT COMMUNITY

Elite Series



	<b>The Hayden</b> Model # 34024442A Approx 957 Sq Ft.	23'-4" x 44' 2 Bedrooms, 2 Baths Front Porch Model Island Kitchen Painted/Accented Feature Wall	60" Tiled Shower in Master Bath w/ Low Threshold Stop-In, Barn Door Style Shower Door, Linear Pan Floating Sinks in Master Bath	<small>Copyright © Palm Harbor Homes, Inc. Because Palm Harbor Homes has a continuous product updating and improvement program, prices, plans, dimensions, features, materials, specifications, availability are subject to change without notice or obligation. Please refer to working drawings for materials and finish. Plans and floor plans are artist depictions only and may vary from completed home. Square footage calculations and room dimensions are approximate and subject to industry standards.</small> REV 12/5/23
--	---	---	---	--

RiverwalkLandingFL.com | 10 Blackfin Drive, Freeport, Florida 32439  
 Contact Cerenna Solecki at 850-259-2758 to schedule a tour today!