



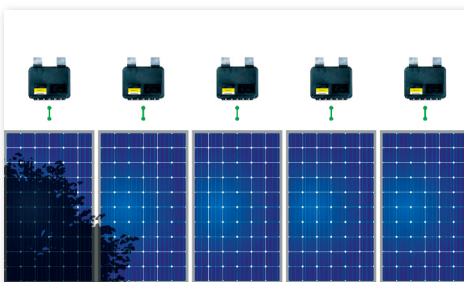
# Tigo GO Optimized ESS (Energy Storage System)

Maximum flexibility, energy production and battery efficiency for home solar installations



## BENEFITS

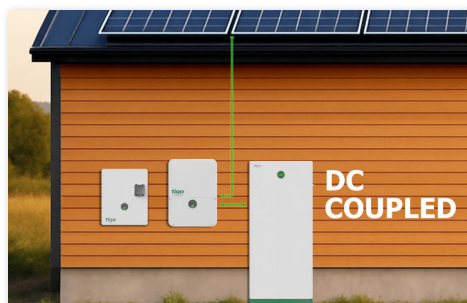
Tigo GO ESS is a complete residential solution, featuring intuitive and flexible install, modular components, and optimized performance with increased energy density and high surge power.



### OPTIMIZED

Get more energy from each module by minimizing the negative impacts of shade.

- Tigo optimizers increase energy yield by an average of 6.6% across all monitored sites
- Reclaimed Energy shows the amount and value of benefit from optimizers
- Module-level monitoring provides assurance and enables remote troubleshooting



### EFFICIENT

Minimize energy losses with the most efficient battery configuration.

- DC-coupled battery that's 5% more efficient than AC-coupled
- Minimize clipping - use energy production above inverter nameplate to charge battery
- Less equipment required - one inverter for both PV and battery



### FLEXIBLE

Multiple configurations and sizes maximize the benefits of each site.

- Inverters with small form factor and wide voltage range to simplify new and repowered sites
- Energy storage optional, and available in 5kWh increments, up to 30kWh
- Site-specific support available directly through Tigo EI App

Contact us

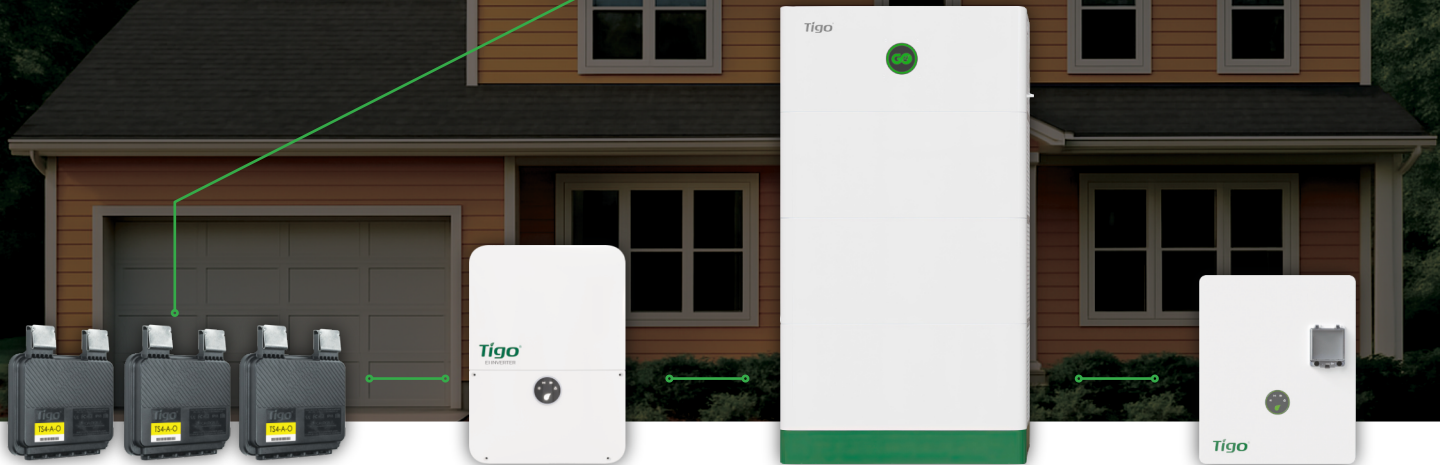
[tigoenergy.com/contacts](https://tigoenergy.com/contacts)

PN: 002-00235-00 | v1.0

Copyright Tigo Energy, Inc. 2025

**Tigo**®

# GO ESS gets more usable energy from home solar installs



## Optimizers

Maximize production and visibility with module-level optimization and monitoring

## Inverter

Lightweight, storage-ready inverters in multiple sizes for new and repowering installs

## GO Battery

Ultra-efficient DC-coupled LFP battery that's modular with energy capacity up to 30kWh

## ATS

50 and 200A options enable battery backup with optional generator connection

## Unified by the Tigo Energy Intelligence (EI) platform



Reduce truck rolls and get peace of mind that your systems are performing the way they were designed to. Benefits of the Tigo Energy Intelligence platform include:

- **Maximize site uptime** - Get real-time alerts when an issue arises so the site can quickly be returned to normal. More uptime = more energy.
- **Minimize O&M costs** - Detect system level, string level, and module level issues to pinpoint and diagnose issues remotely. Save money with fewer truck rolls.
- **Enhance the customer experience** - Get visibility to all sites from one spot with fleet, system, and module level performance data. Get more referrals with happier customers.
- **Commission it all quickly and reliably** with the Tigo EI App

Contact us  
[tigoenergy.com/contacts](https://tigoenergy.com/contacts)

PN: 002-00235-00 | v1.0  
Copyright Tigo Energy, Inc. 2025

**Tigo**®

# Optimized, efficient DC-architecture



## Inverter

The Tigo GO Inverter is the centerpiece of the Tigo GO Residential solution. It orchestrates energy production and the consumption (when coupled with the Tigo GO Battery) and seamlessly pairs with Tigo TS4 MLPE.

- Available in 3.8kW, 7.6kW and 11.4kW models
- Storage-ready 'hybrid' inverter
- Up to 200% DC oversizing (2:1 DC/AC ratio)
- Wide operating voltage: 80-550V
- Lightweight, small footprint for new and re-powered installations
- Warranty: 152 months



## GO Battery

The Tigo GO Battery provides energy resilience in the event of grid outage and optimizes energy consumption based on rate plans for today's home energy needs.

- High performance Lithium Iron Phosphate (LFP) battery chemistry
- Load shift, self consumption and backup power applications
- Up to 30kWh per inverter (6 x 5kWh modules)
- NEMA4 - outdoor and indoor rated
- Up to 11.4kW continuous power
- Warranty: 132 months or 6,000 cycles



## ATS (Automatic Transfer Switch)

The Tigo ATS is required for powering homes during grid outages. It senses grid loss and safely switches from grid + solar/battery to solar/battery/generator only.

- Essential load and whole home back up
- Available in 50A and 200A models (generator support on 200A-G only)
- Output 120Vac and 240Vac split phase
- Built-in transformer
- IP65 - Outdoor and indoor rated
- Warranty: 132 months



## Tigo optimizers

Tigo optimizers connect to your solar modules to unlock multiple benefits.

- Increase energy production - with module level optimization
- Lower maintenance costs - with module level visibility
- Enhance safety - with module level rapid shutdown
- Works with modules up to 725W, 22A (Isc)
- Warranty: 300 months





# Tigo is dedicated to your success

## More customers

- Install more sites in less time
- Serve more sites with the same equipment (shaded, mixed orientations, large & small, etc.)
- Provide the solar features your solar customers want and get more referrals

## Lower operational expenses

- Single solution from commissioning through monitoring
- Simplify inventory management with a modular battery system battery system
- Reduce truck rolls by remotely diagnosing issues

## TRUSTED AROUND THE WORLD

**Tigo Energy Intelligence monitors 2.3GWh of daily solar production**



## About Tigo

Tigo Energy is the worldwide leader in Flex MLPE (Module Level Power Electronics) with innovative solutions that increase solar energy production, decrease operating costs, and significantly enhance safety of solar energy systems. The Tigo TS4 platform maximizes the benefit of solar and provides customers with the most scalable, versatile, and reliable MLPE solution available. Tigo Energy is dedicated to making the best MLPE on earth so more people can enjoy the benefits of solar.



GO Residential



Contact Sales

Contact us

[tigoenergy.com/contacts](https://tigoenergy.com/contacts)

PN: 002-00235-00 | v1.0  
Copyright Tigo Energy, Inc. 2025

**Tigo**®