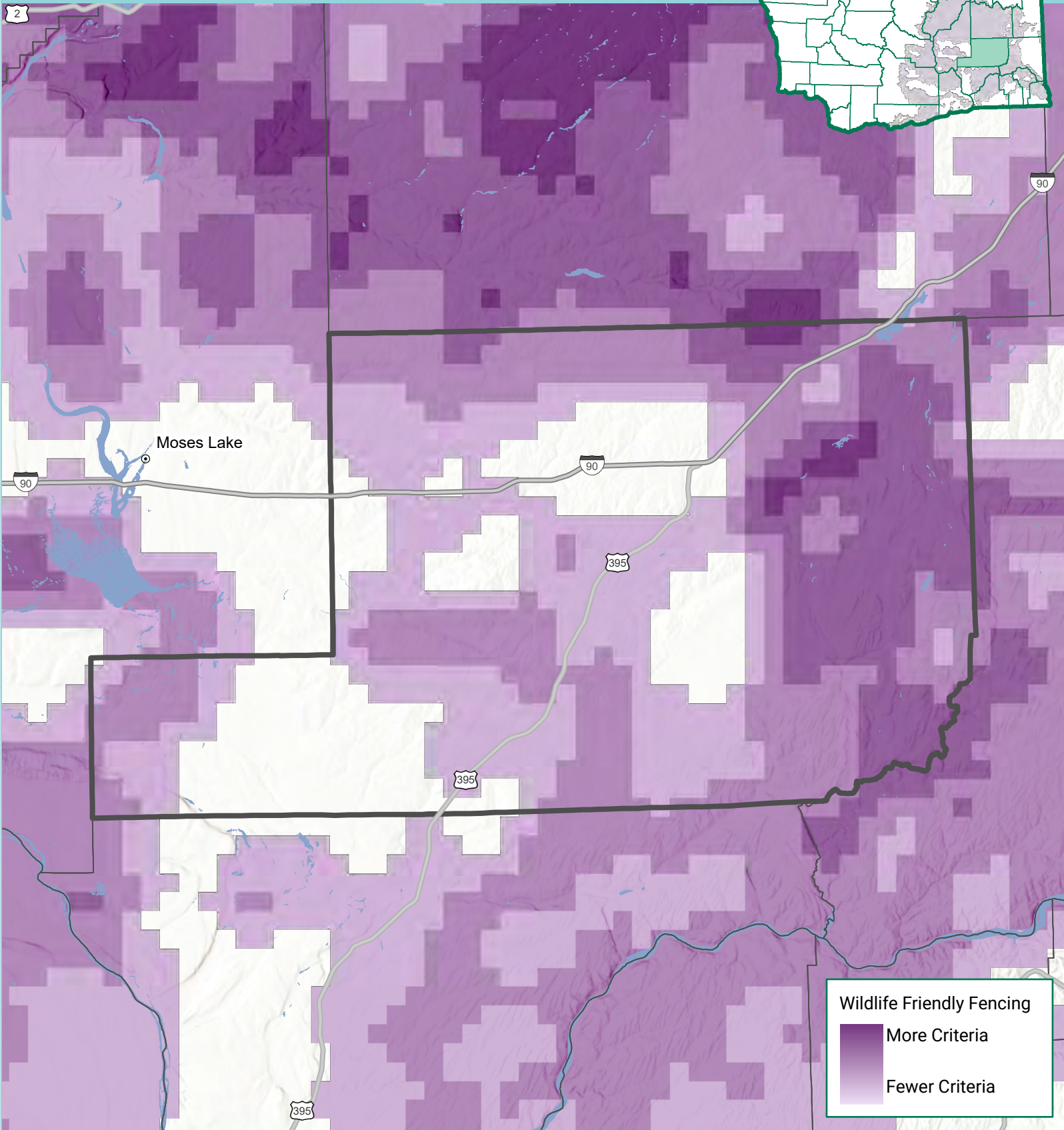
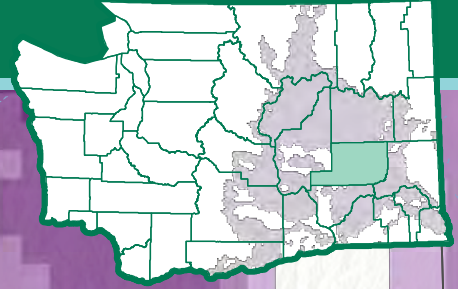


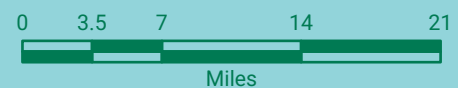
ADAMS COUNTY

Spatial Selection Criteria for WSRRI Projects

This map pools the various spatial criteria used for evaluating projects submitted to the Washington Shrubsteppe Resiliency and Restoration Initiative. The darker the purple, the more spatial criteria apply to that pixel. However, a proposed project's location alone does not determine project selection.



Department of Fish and Wildlife

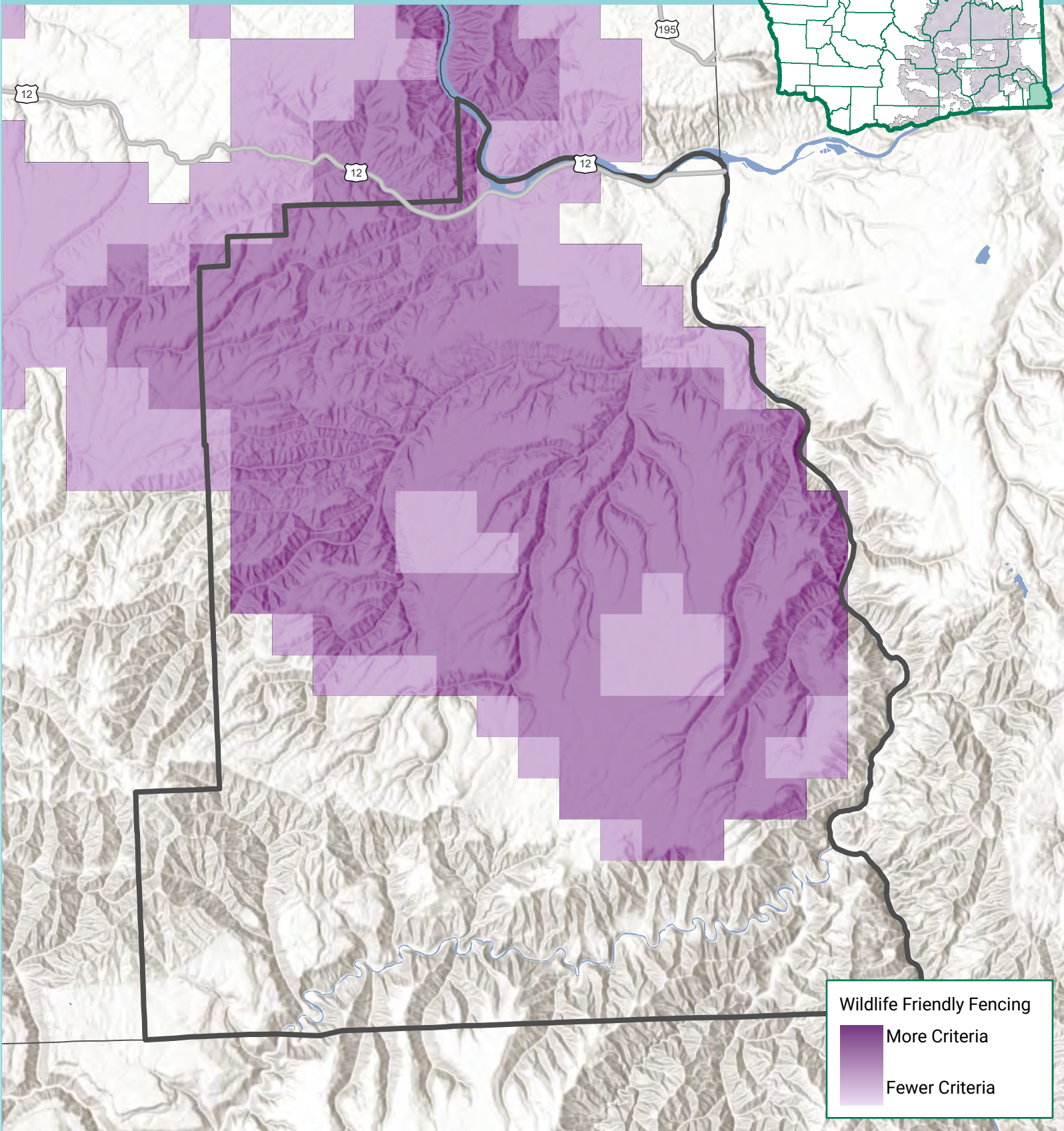
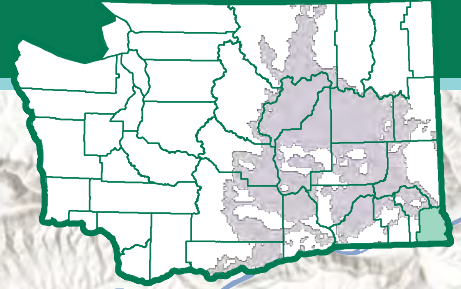


This product is for informational purposes and may not have been prepared for or be suitable for legal, engineering, or surveying purposes. It does not represent an on-the-ground survey and represents only the approximate relative location of property boundaries.

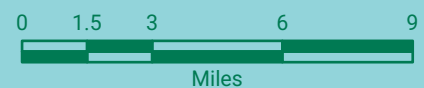
ASOTIN COUNTY

Spatial Selection Criteria for WSRRI Projects

This map pools the various spatial criteria used for evaluating projects submitted to the Washington Shrubsteppe Resiliency and Restoration Initiative. The darker the purple, the more spatial criteria apply to that pixel. However, a proposed project's location alone does not determine project selection.



Department of Fish and Wildlife

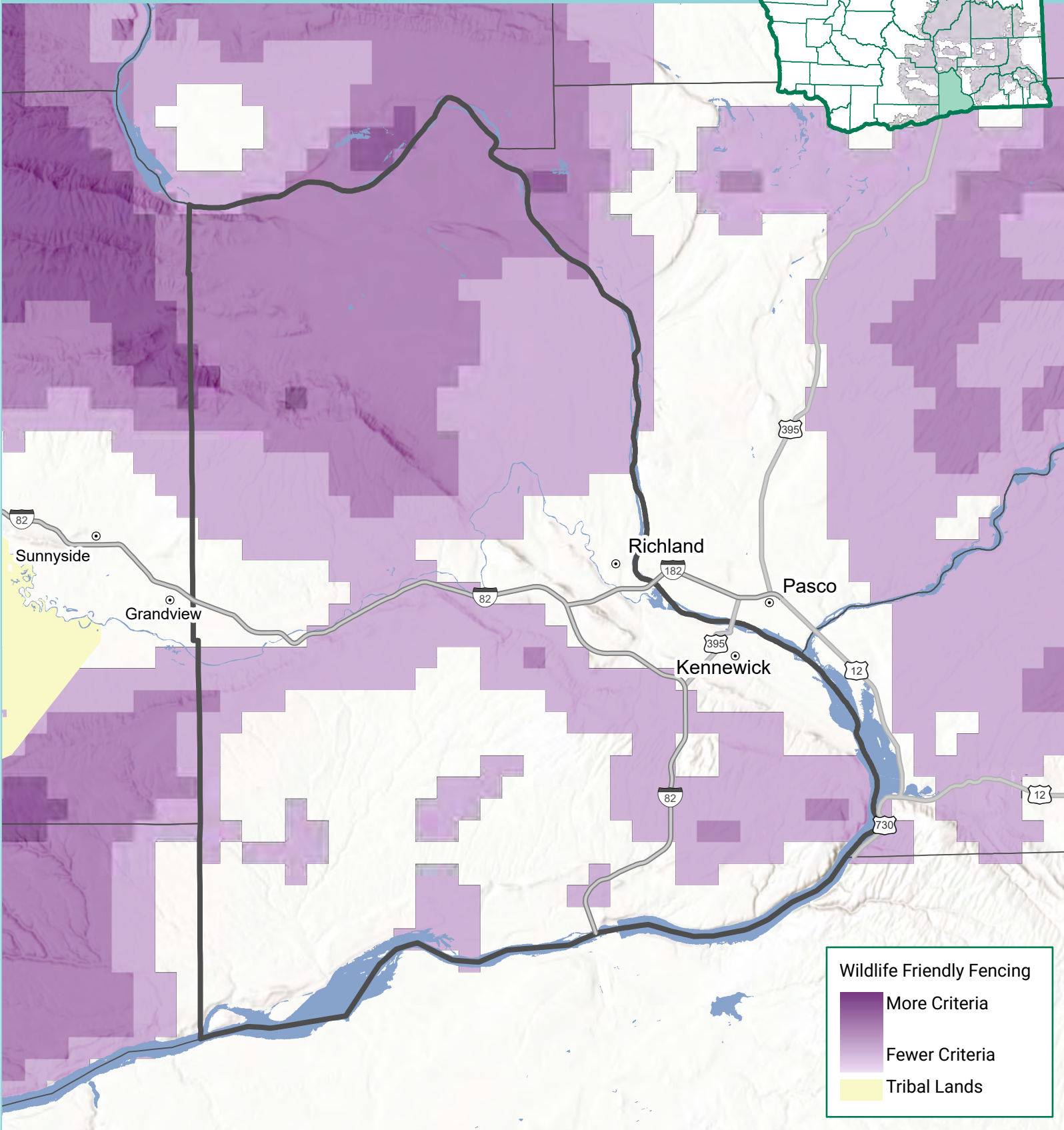
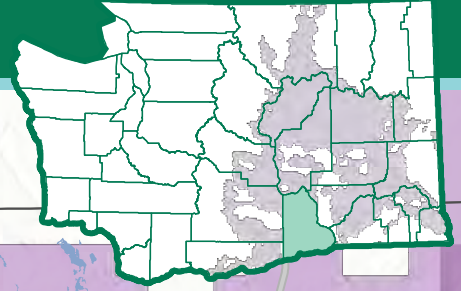


This product is for informational purposes and may not have been prepared for or be suitable for legal, engineering, or surveying purposes. It does not represent an on-the-ground survey and represents only the approximate relative location of property boundaries.

BENTON COUNTY

Spatial Selection Criteria for WSRRI Projects

This map pools the various spatial criteria used for evaluating projects submitted to the Washington Shrubsteppe Resiliency and Restoration Initiative. The darker the purple, the more spatial criteria apply to that pixel. However, a proposed project's location alone does not determine project selection.

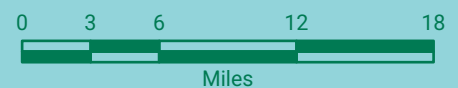


Wildlife Friendly Fencing

- More Criteria
- Fewer Criteria
- Tribal Lands



Department of Fish and Wildlife

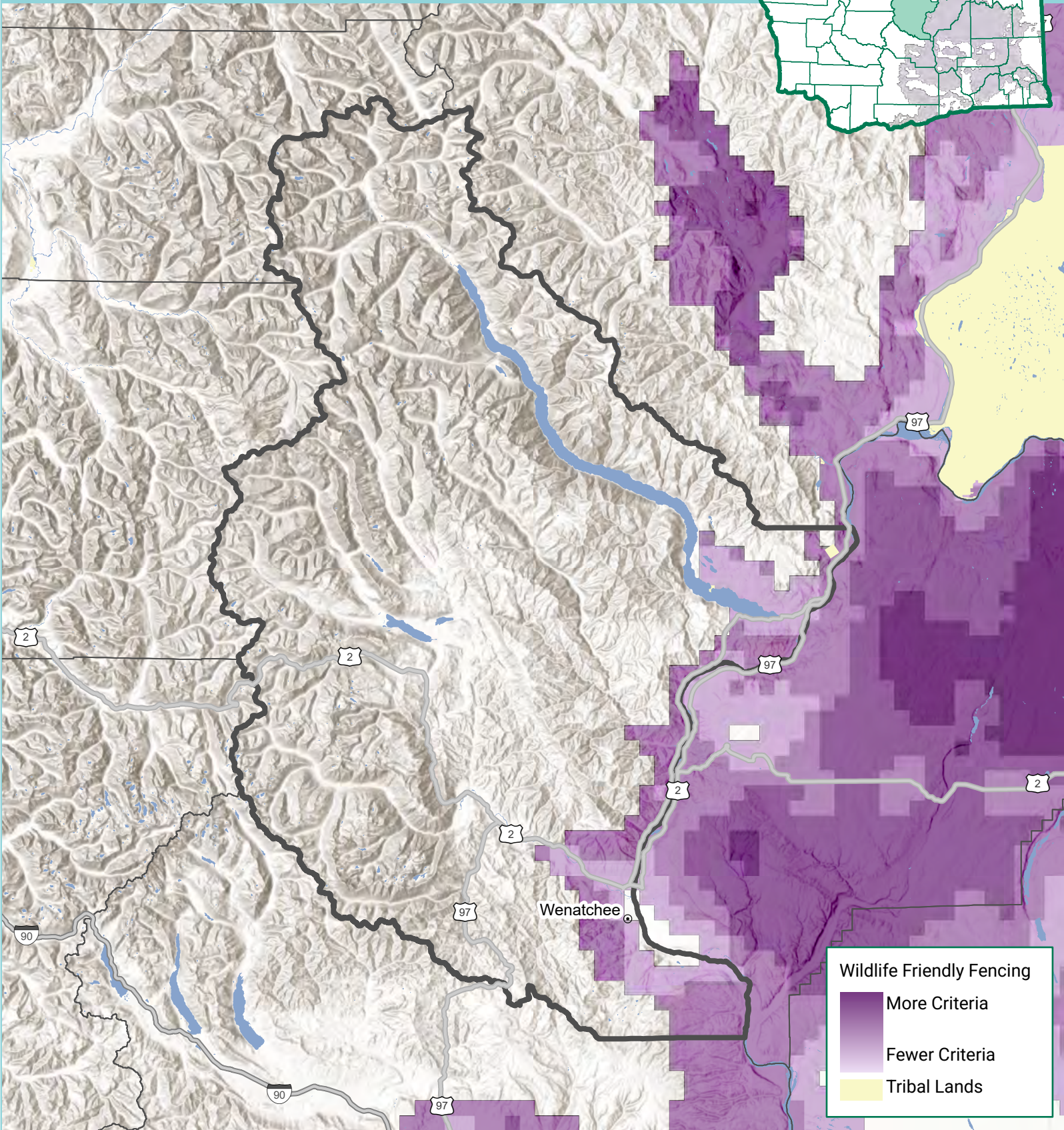
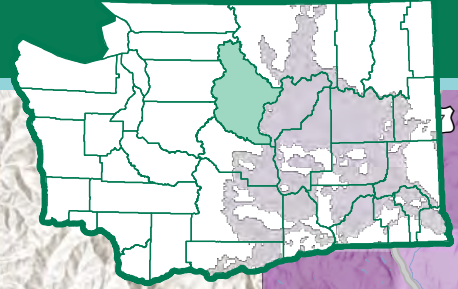


This product is for informational purposes and may not have been prepared for or be suitable for legal, engineering, or surveying purposes. It does not represent an on-the-ground survey and represents only the approximate relative location of property boundaries.

CHELAN COUNTY

Spatial Selection Criteria for WSRRI Projects

This map pools the various spatial criteria used for evaluating projects submitted to the Washington Shrubsteppe Resiliency and Restoration Initiative. The darker the purple, the more spatial criteria apply to that pixel. However, a proposed project's location alone does not determine project selection.

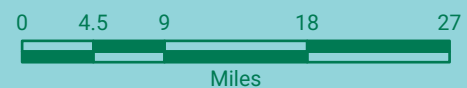


Wildlife Friendly Fencing

- More Criteria
- Fewer Criteria
- Tribal Lands



Department of Fish and Wildlife

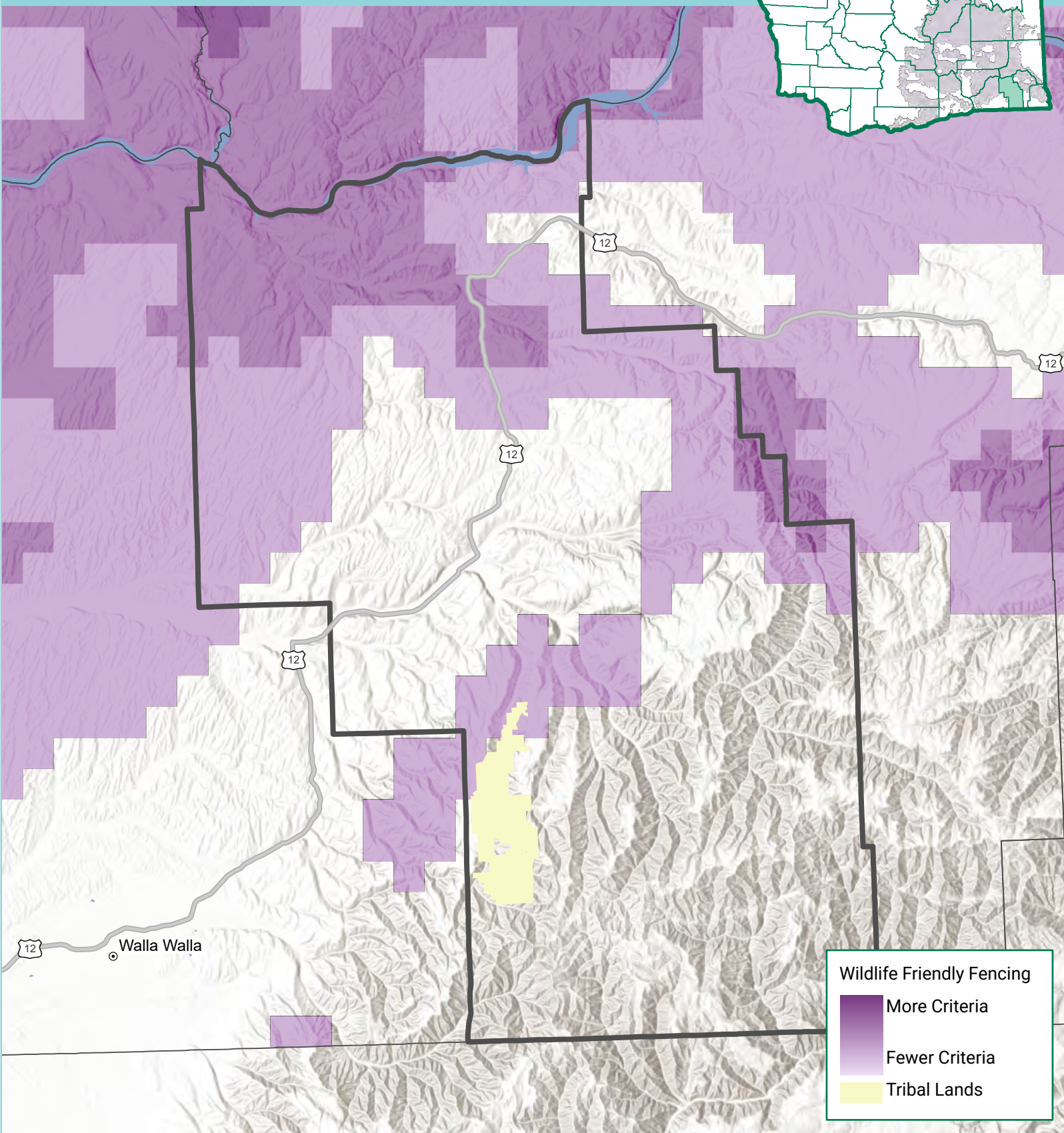
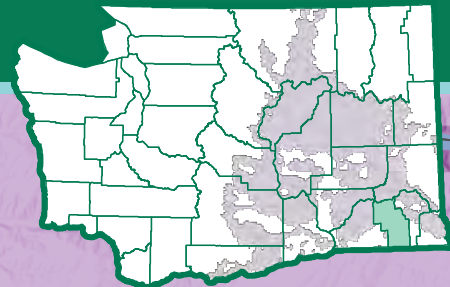


This product is for informational purposes and may not have been prepared for or be suitable for legal, engineering, or surveying purposes. It does not represent an on-the-ground survey and represents only the approximate relative location of property boundaries.

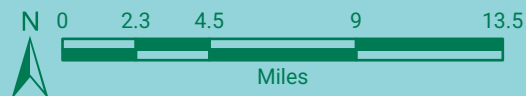
COLUMBIA COUNTY

Spatial Selection Criteria for WSRRI Projects

This map pools the various spatial criteria used for evaluating projects submitted to the Washington Shrubsteppe Resiliency and Restoration Initiative. The darker the purple, the more spatial criteria apply to that pixel. However, a proposed project's location alone does not determine project selection.



Department of Fish and Wildlife

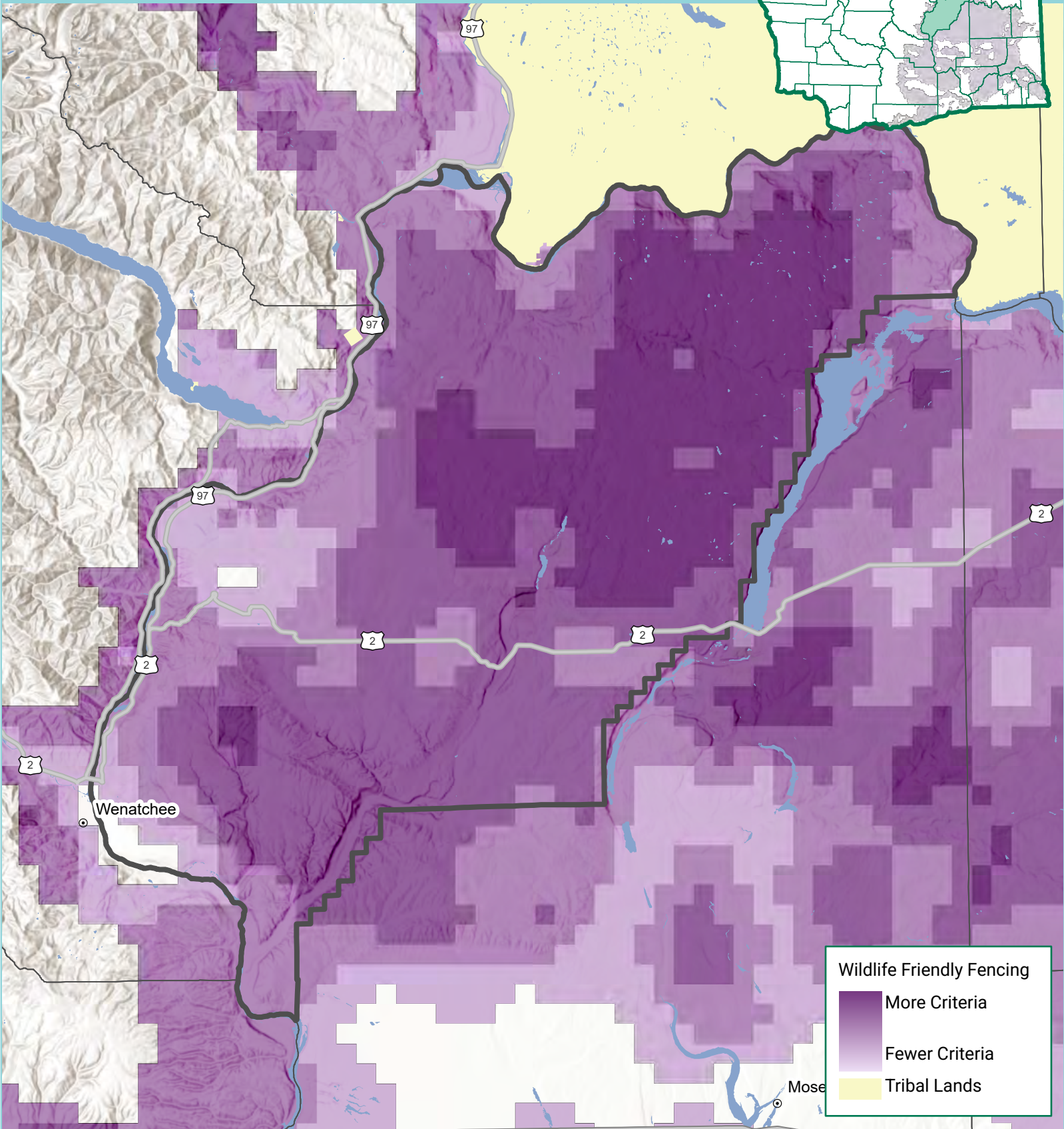
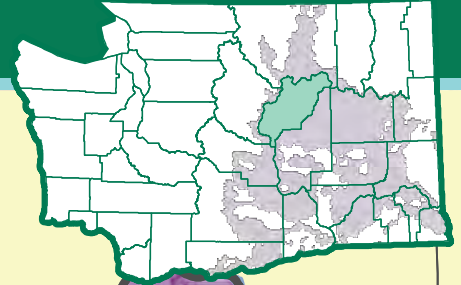


This product is for informational purposes and may not have been prepared for or be suitable for legal, engineering, or surveying purposes. It does not represent an on-the-ground survey and represents only the approximate relative location of property boundaries.

DOUGLAS COUNTY

Spatial Selection Criteria for WSRRI Projects

This map pools the various spatial criteria used for evaluating projects submitted to the Washington Shrubsteppe Resiliency and Restoration Initiative. The darker the purple, the more spatial criteria apply to that pixel. However, a proposed project's location alone does not determine project selection.



Department of Fish and Wildlife

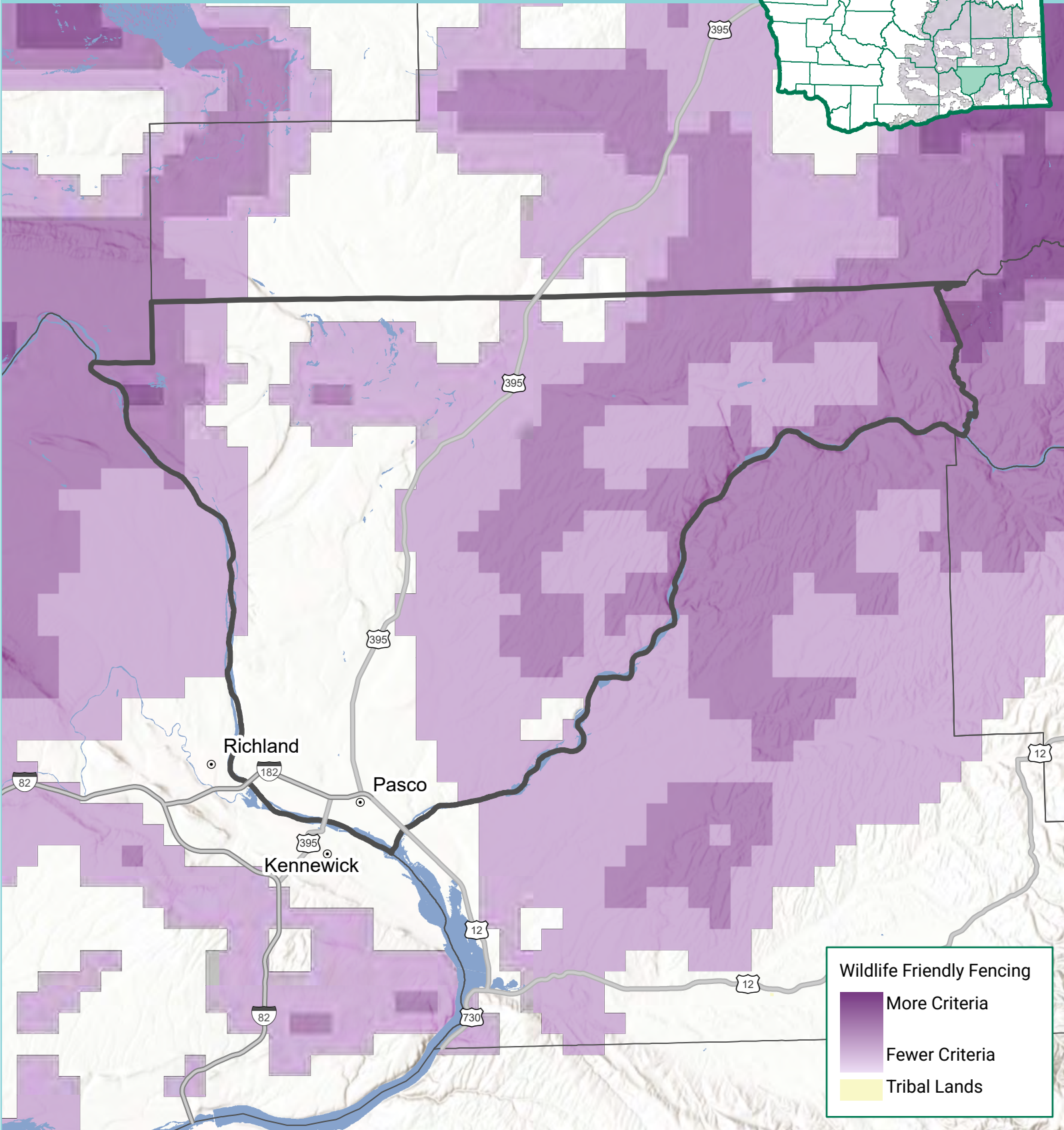
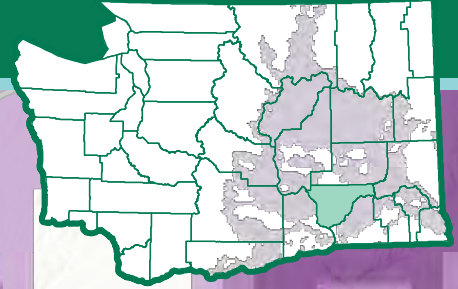


This product is for informational purposes and may not have been prepared for or be suitable for legal, engineering, or surveying purposes. It does not represent an on-the-ground survey and represents only the approximate relative location of property boundaries.

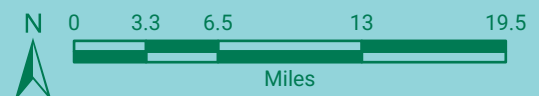
FRANKLIN COUNTY

Spatial Selection Criteria for WSRRI Projects

This map pools the various spatial criteria used for evaluating projects submitted to the Washington Shrubsteppe Resiliency and Restoration Initiative. The darker the purple, the more spatial criteria apply to that pixel. However, a proposed project's location alone does not determine project selection.



Department of Fish and Wildlife

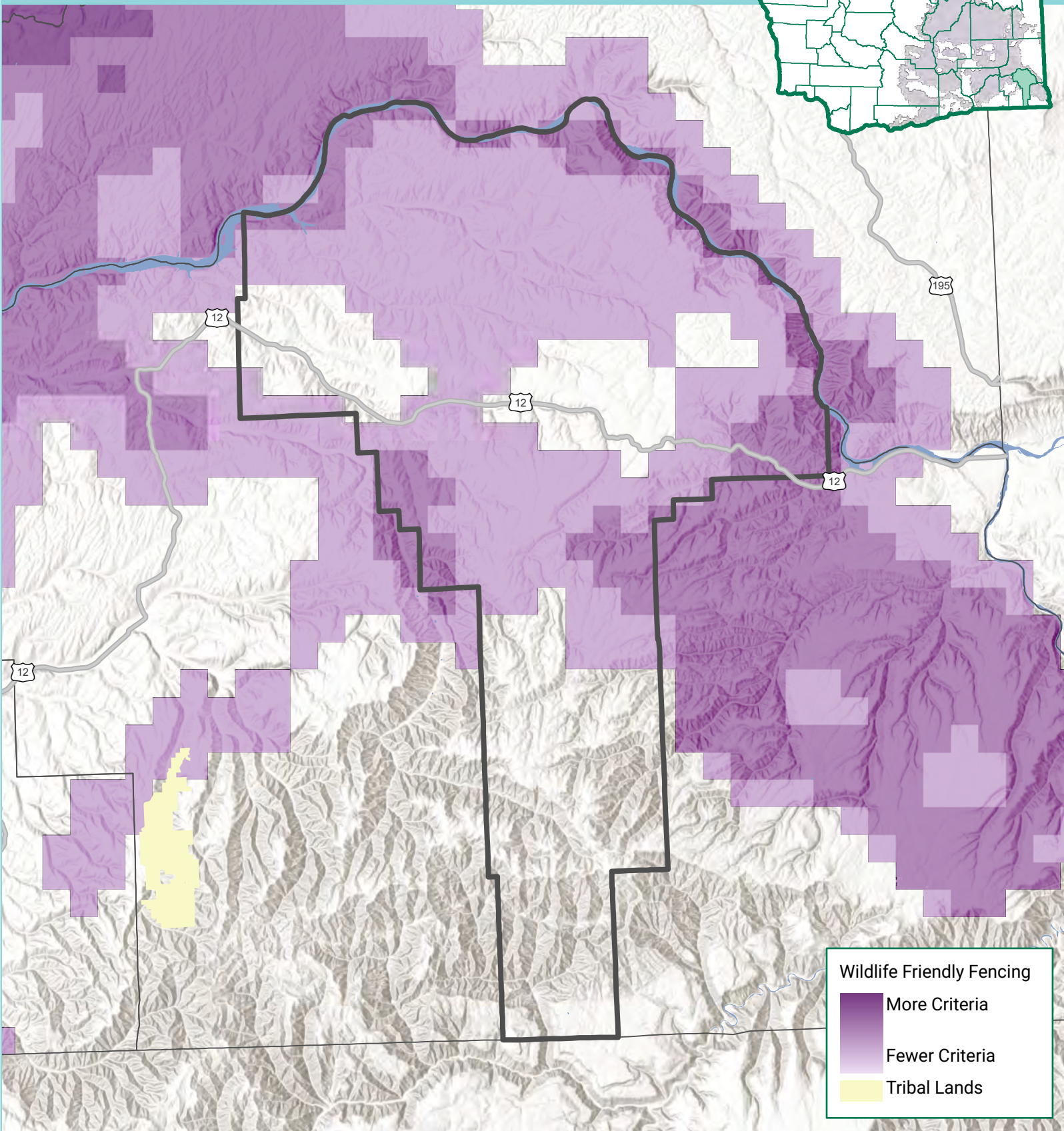
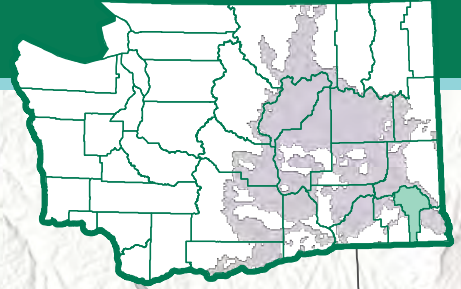


This product is for informational purposes and may not have been prepared for or be suitable for legal, engineering, or surveying purposes. It does not represent an on-the-ground survey and represents only the approximate relative location of property boundaries.

GARFIELD COUNTY

Spatial Selection Criteria for WSRRI Projects

This map pools the various spatial criteria used for evaluating projects submitted to the Washington Shrubsteppe Resiliency and Restoration Initiative. The darker the purple, the more spatial criteria apply to that pixel. However, a proposed project's location alone does not determine project selection.

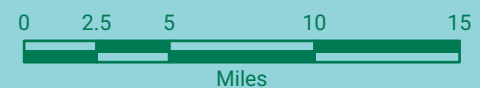


Wildlife Friendly Fencing

- More Criteria
- Fewer Criteria
- Tribal Lands



Department of Fish and Wildlife

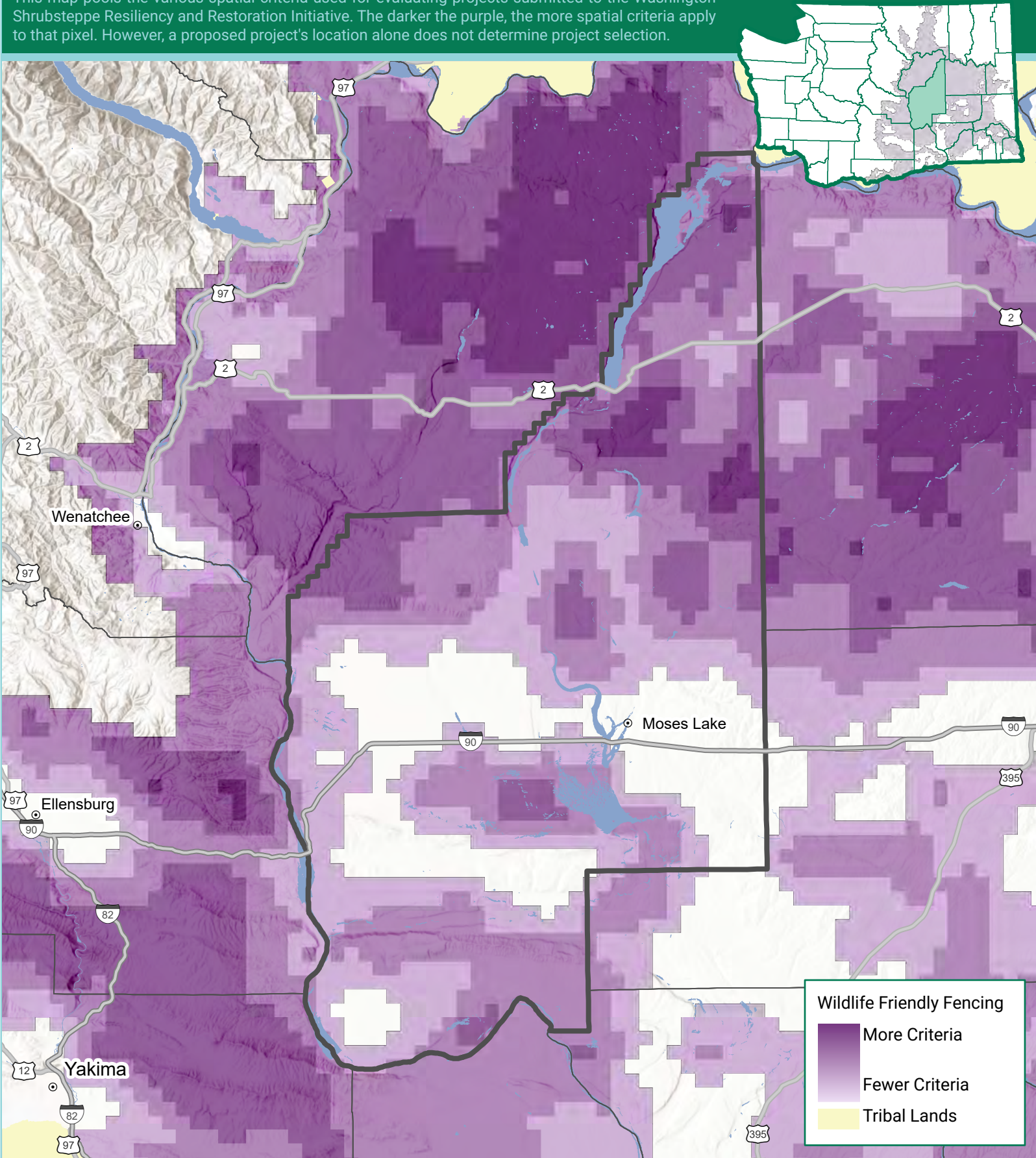


This product is for informational purposes and may not have been prepared for or be suitable for legal, engineering, or surveying purposes. It does not represent an on-the-ground survey and represents only the approximate relative location of property boundaries.

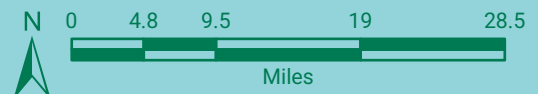
GRANT COUNTY

Spatial Selection Criteria for WSRRI Projects

This map pools the various spatial criteria used for evaluating projects submitted to the Washington Shrubsteppe Resiliency and Restoration Initiative. The darker the purple, the more spatial criteria apply to that pixel. However, a proposed project's location alone does not determine project selection.



Department of Fish and Wildlife

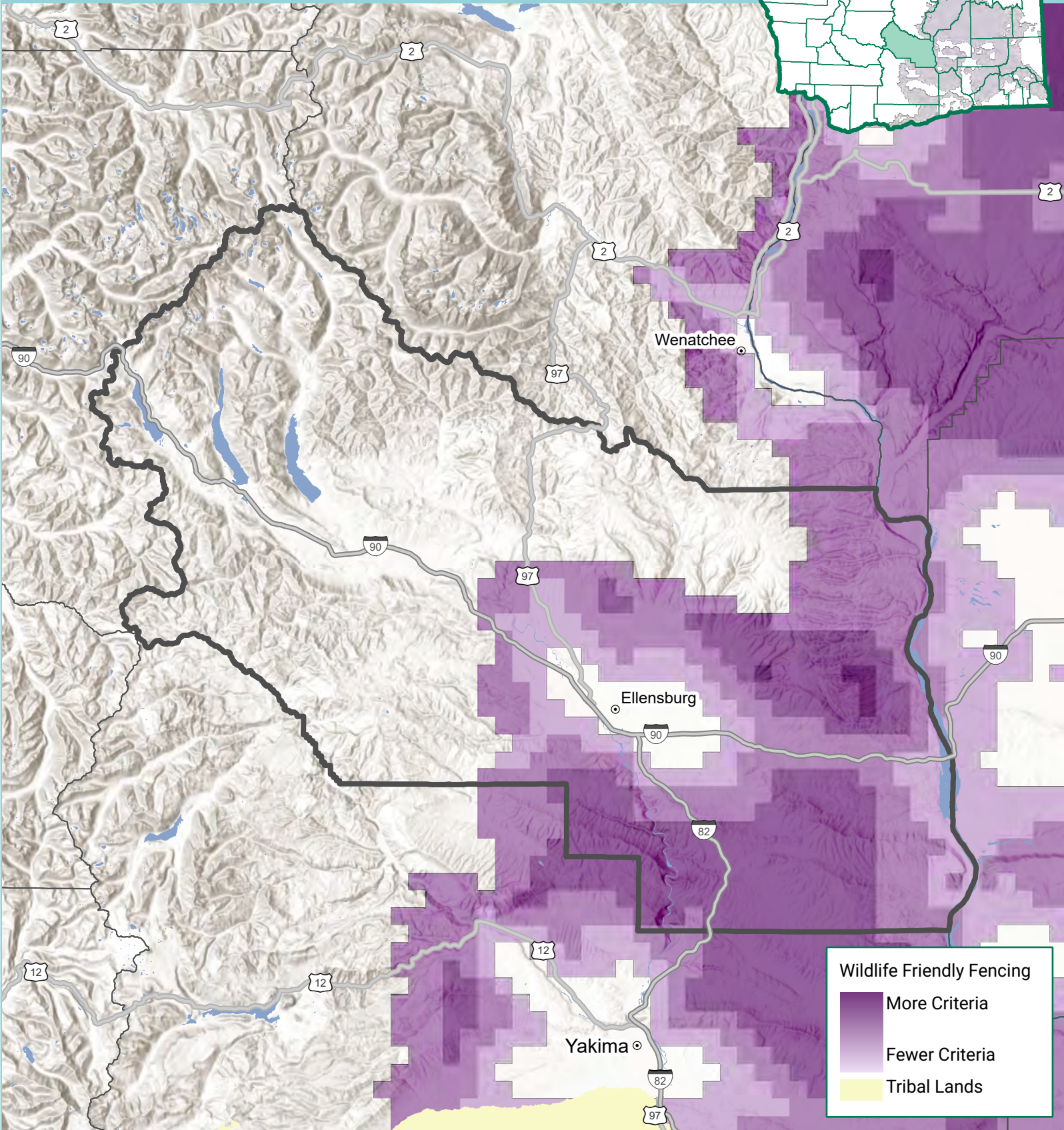
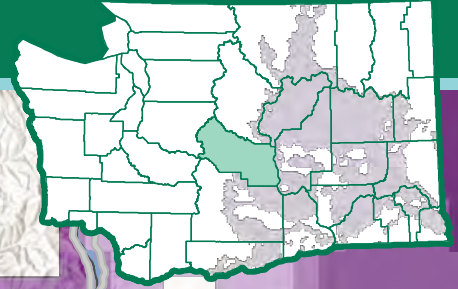


This product is for informational purposes and may not have been prepared for or be suitable for legal, engineering, or surveying purposes. It does not represent an on-the-ground survey and represents only the approximate relative location of property boundaries.

KITTITAS COUNTY

Spatial Selection Criteria for WSRRI Projects

This map pools the various spatial criteria used for evaluating projects submitted to the Washington Shrubsteppe Resiliency and Restoration Initiative. The darker the purple, the more spatial criteria apply to that pixel. However, a proposed project's location alone does not determine project selection.

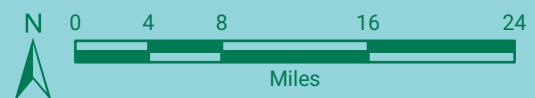


Wildlife Friendly Fencing

- More Criteria
- Fewer Criteria
- Tribal Lands



Department of Fish and Wildlife

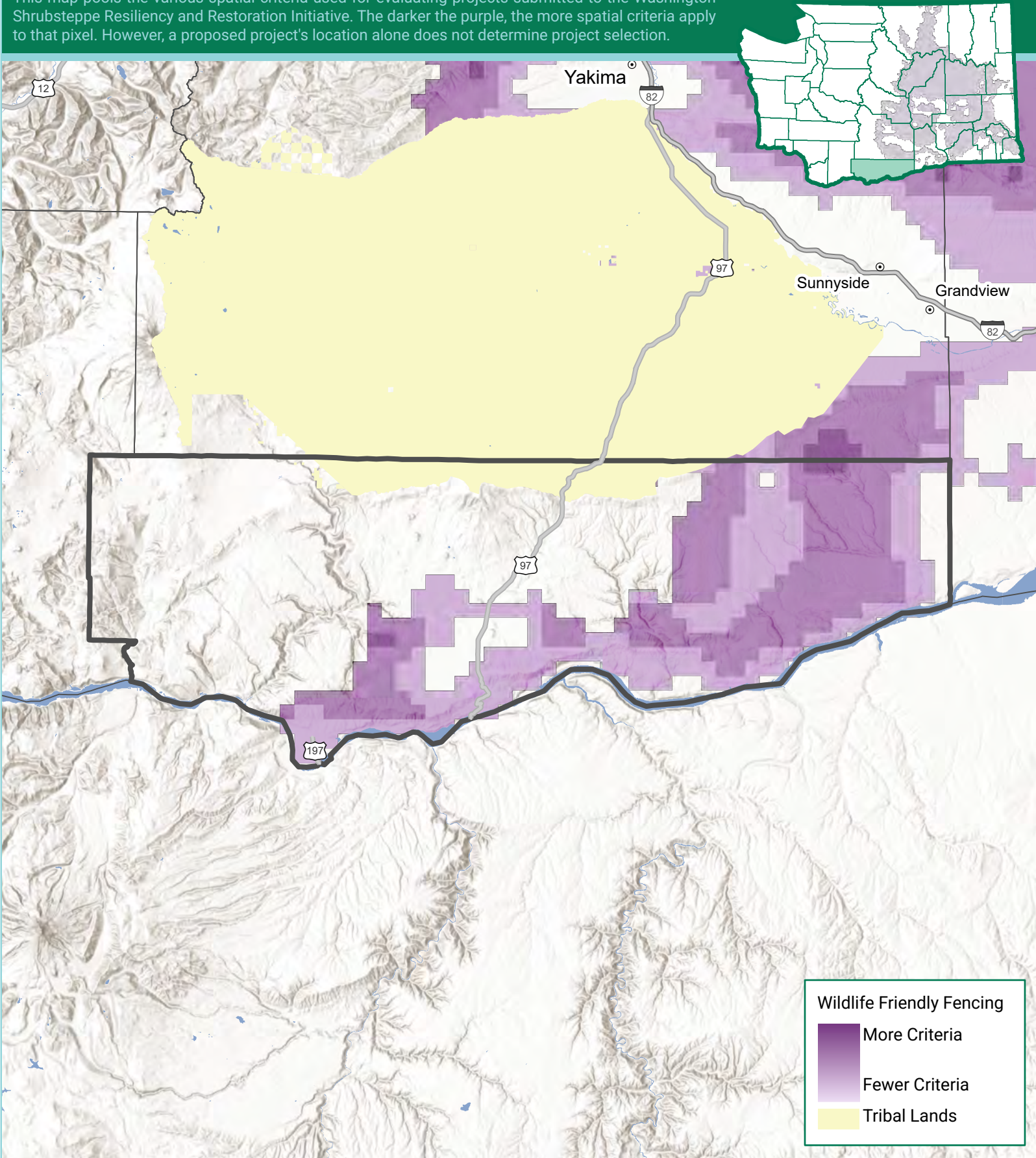


This product is for informational purposes and may not have been prepared for or be suitable for legal, engineering, or surveying purposes. It does not represent an on-the-ground survey and represents only the approximate relative location of property boundaries.

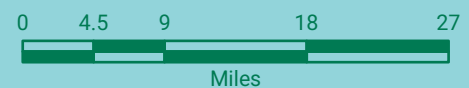
Klickitat County

Spatial Selection Criteria for WSRRI Projects

This map pools the various spatial criteria used for evaluating projects submitted to the Washington Shrubsteppe Resiliency and Restoration Initiative. The darker the purple, the more spatial criteria apply to that pixel. However, a proposed project's location alone does not determine project selection.



Department of Fish and Wildlife

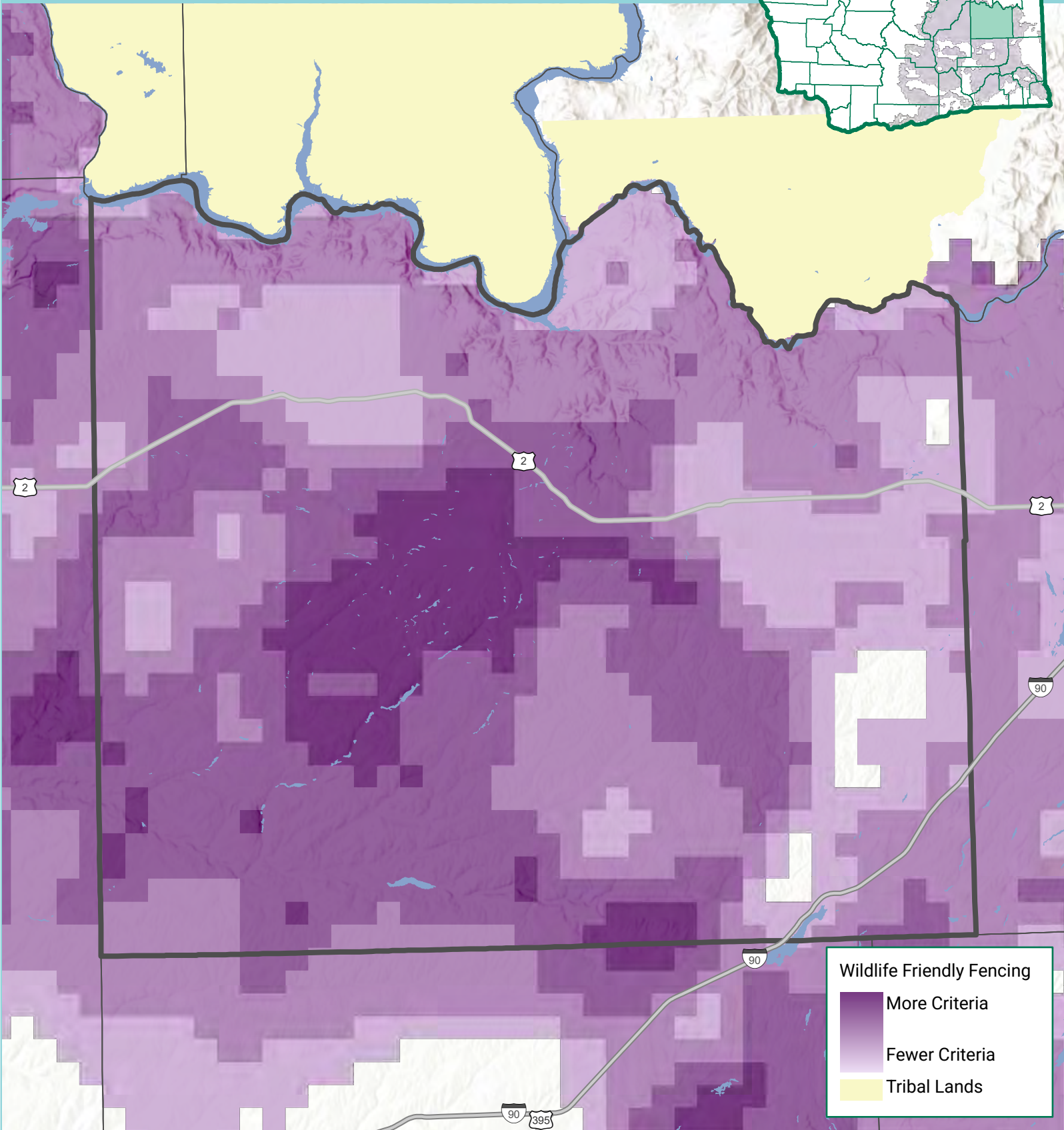
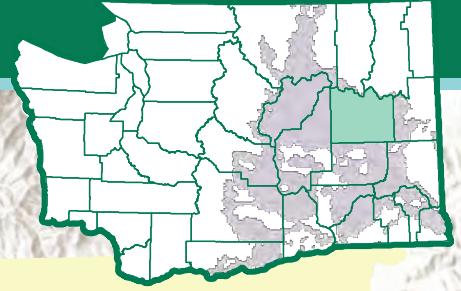


This product is for informational purposes and may not have been prepared for or be suitable for legal, engineering, or surveying purposes. It does not represent an on-the-ground survey and represents only the approximate relative location of property boundaries.

LINCOLN COUNTY

Spatial Selection Criteria for WSRRI Projects

This map pools the various spatial criteria used for evaluating projects submitted to the Washington Shrubsteppe Resiliency and Restoration Initiative. The darker the purple, the more spatial criteria apply to that pixel. However, a proposed project's location alone does not determine project selection.

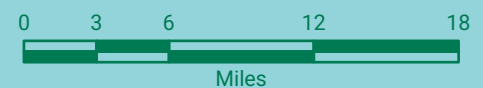


Wildlife Friendly Fencing

- More Criteria
- Fewer Criteria
- Tribal Lands



Department of Fish and Wildlife

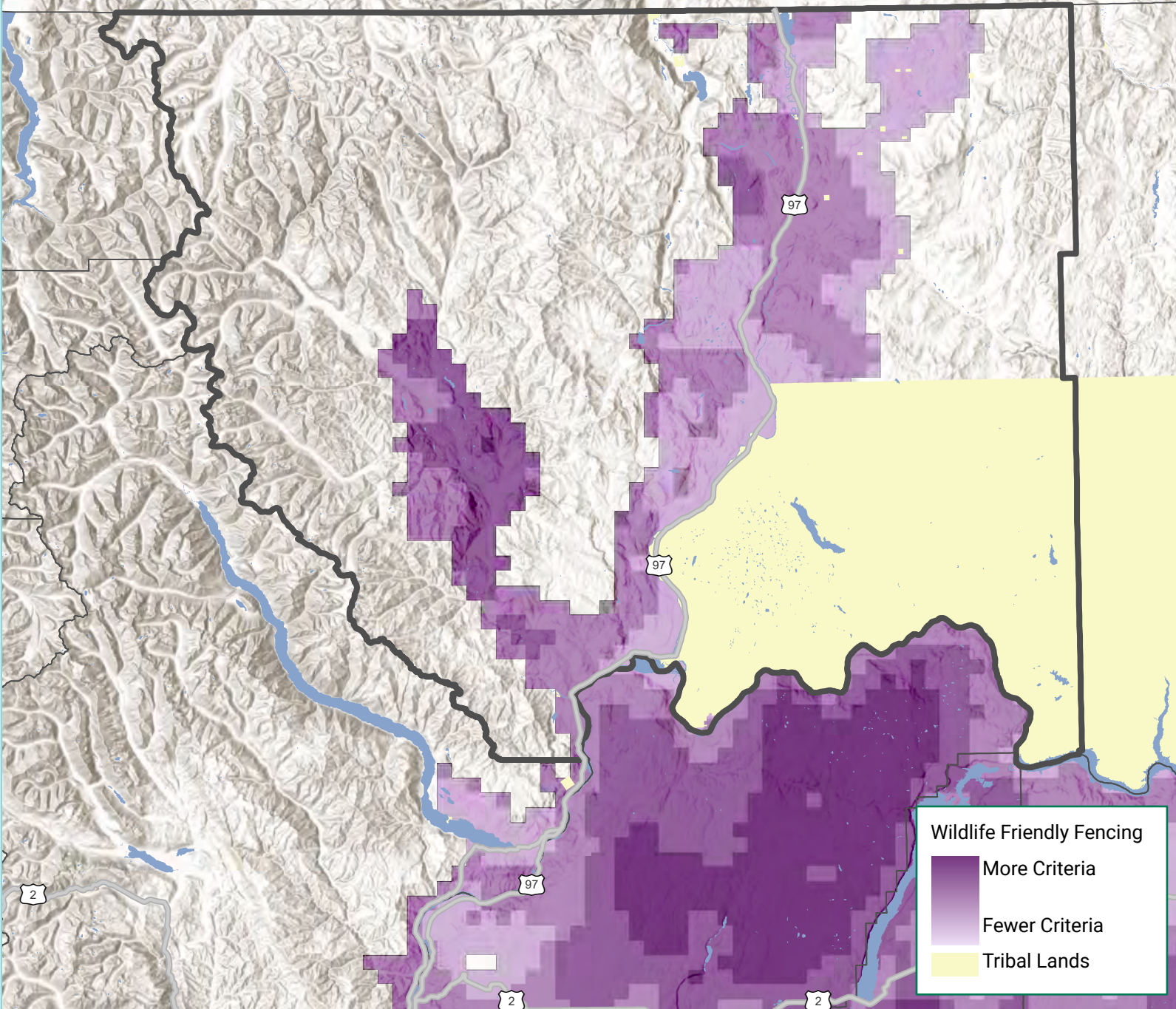
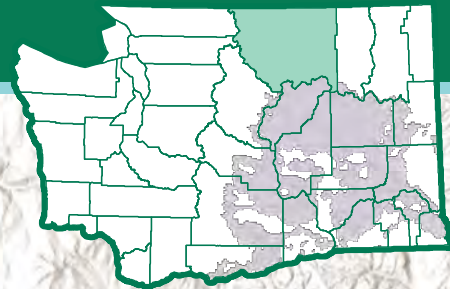


This product is for informational purposes and may not have been prepared for or be suitable for legal, engineering, or surveying purposes. It does not represent an on-the-ground survey and represents only the approximate relative location of property boundaries.

OKANOGAN COUNTY

Spatial Selection Criteria for WSRRI Projects

This map pools the various spatial criteria used for evaluating projects submitted to the Washington Shrubsteppe Resiliency and Restoration Initiative. The darker the purple, the more spatial criteria apply to that pixel. However, a proposed project's location alone does not determine project selection.

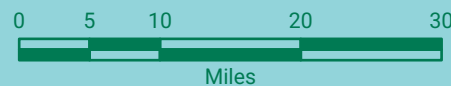


Wildlife Friendly Fencing

- More Criteria
- Fewer Criteria
- Tribal Lands



Department of Fish and Wildlife

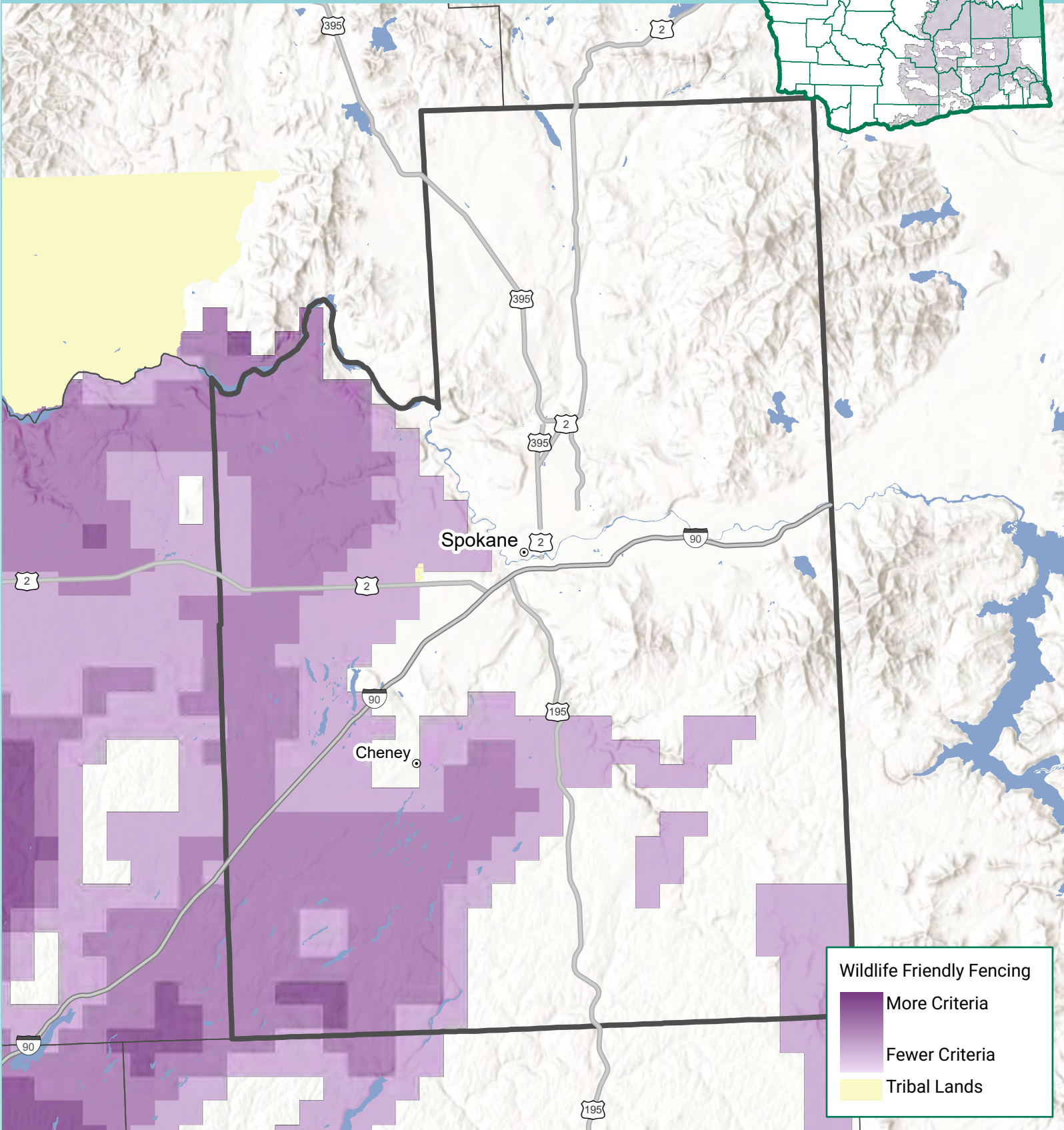
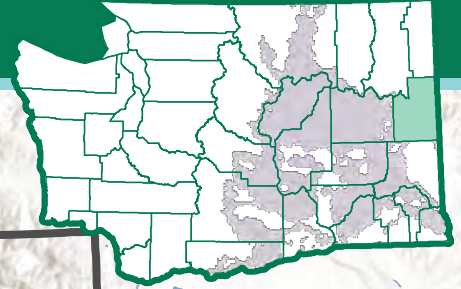


This product is for informational purposes and may not have been prepared for or be suitable for legal, engineering, or surveying purposes. It does not represent an on-the-ground survey and represents only the approximate relative location of property boundaries.

SPOKANE COUNTY

Spatial Selection Criteria for WSRRI Projects

This map pools the various spatial criteria used for evaluating projects submitted to the Washington Shrubsteppe Resiliency and Restoration Initiative. The darker the purple, the more spatial criteria apply to that pixel. However, a proposed project's location alone does not determine project selection.

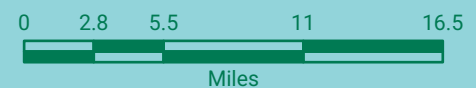


Wildlife Friendly Fencing

- More Criteria
- Fewer Criteria
- Tribal Lands



Department of Fish and Wildlife

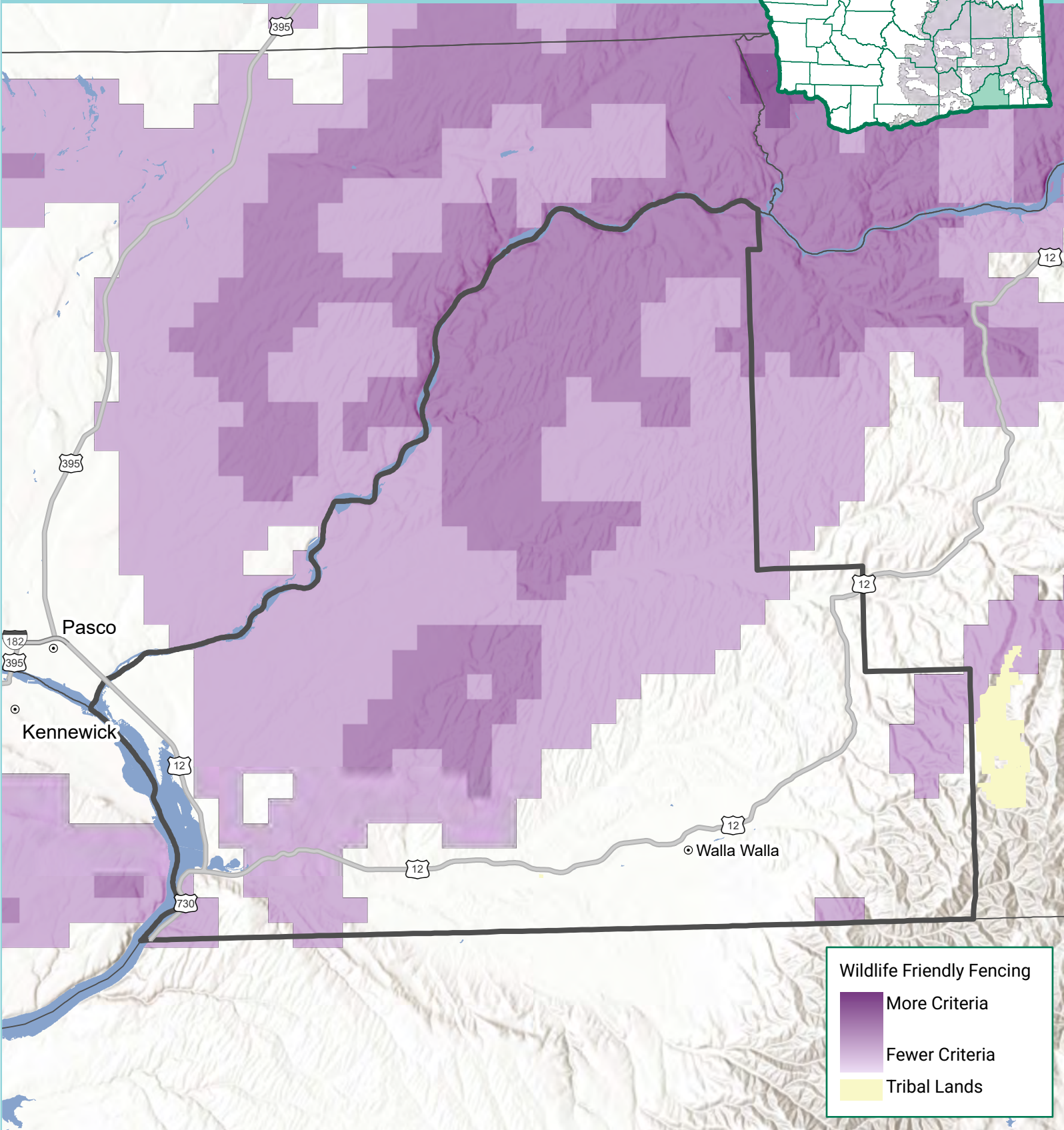
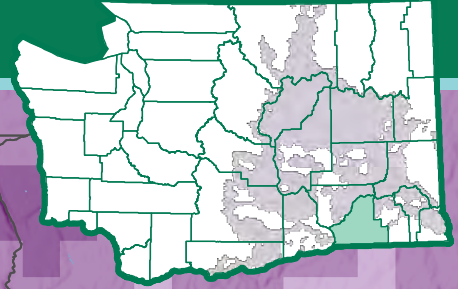


This product is for informational purposes and may not have been prepared for or be suitable for legal, engineering, or surveying purposes. It does not represent an on-the-ground survey and represents only the approximate relative location of property boundaries.

WALLA WALLA COUNTY

Spatial Selection Criteria for WSRRI Projects

This map pools the various spatial criteria used for evaluating projects submitted to the Washington Shrubsteppe Resiliency and Restoration Initiative. The darker the purple, the more spatial criteria apply to that pixel. However, a proposed project's location alone does not determine project selection.

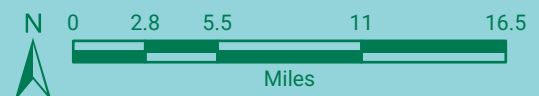


Wildlife Friendly Fencing

- More Criteria
- Fewer Criteria
- Tribal Lands



Department of Fish and Wildlife

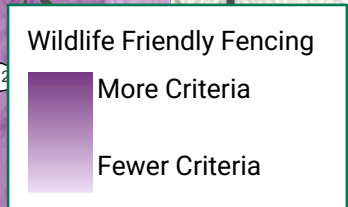
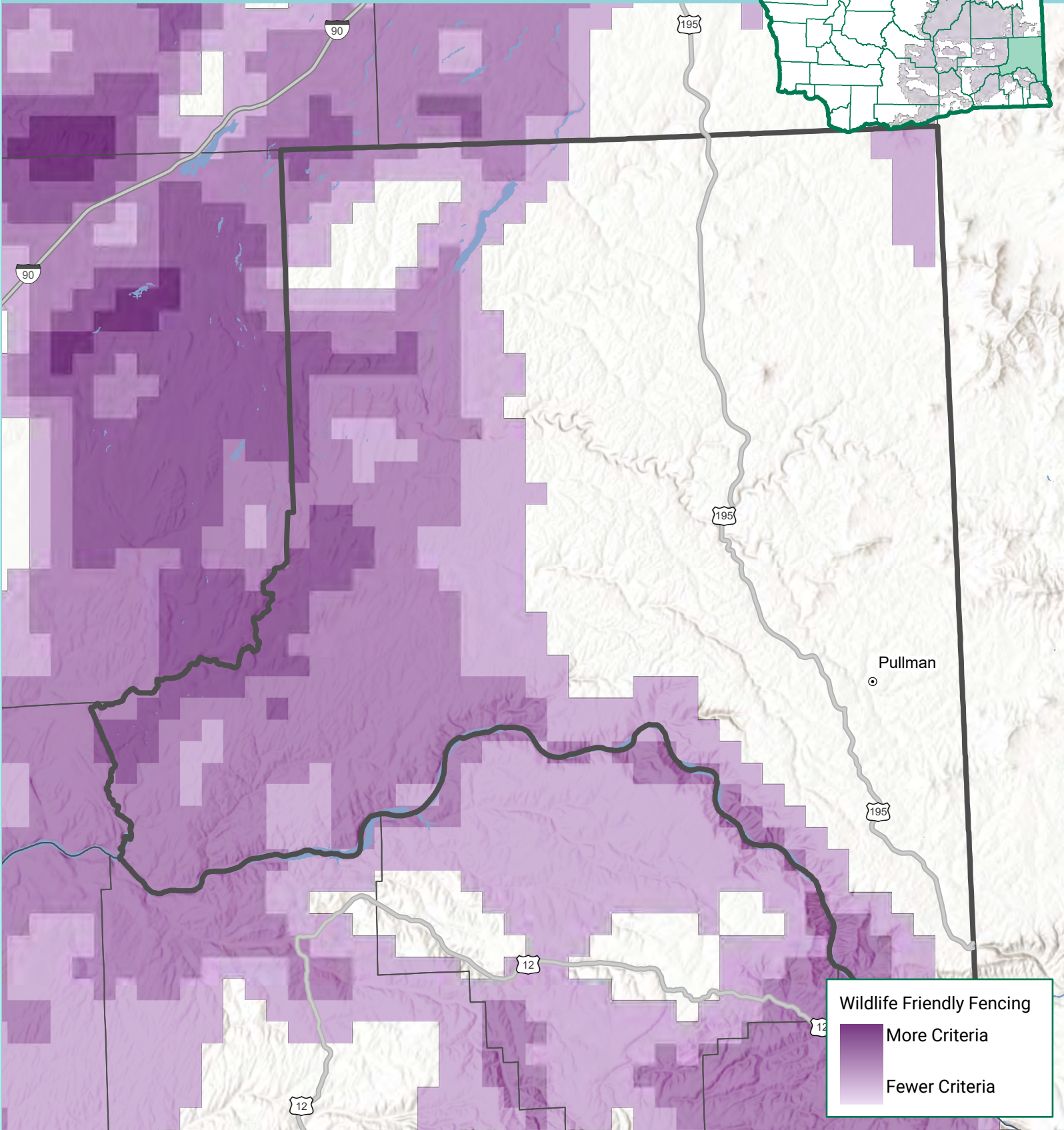
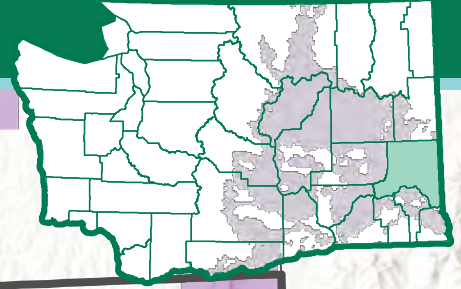


This product is for informational purposes and may not have been prepared for or be suitable for legal, engineering, or surveying purposes. It does not represent an on-the-ground survey and represents only the approximate relative location of property boundaries.

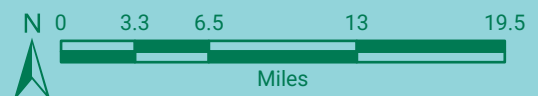
WHITMAN COUNTY

Spatial Selection Criteria for WSRRI Projects

This map pools the various spatial criteria used for evaluating projects submitted to the Washington Shrubsteppe Resiliency and Restoration Initiative. The darker the purple, the more spatial criteria apply to that pixel. However, a proposed project's location alone does not determine project selection.



Department of Fish and Wildlife

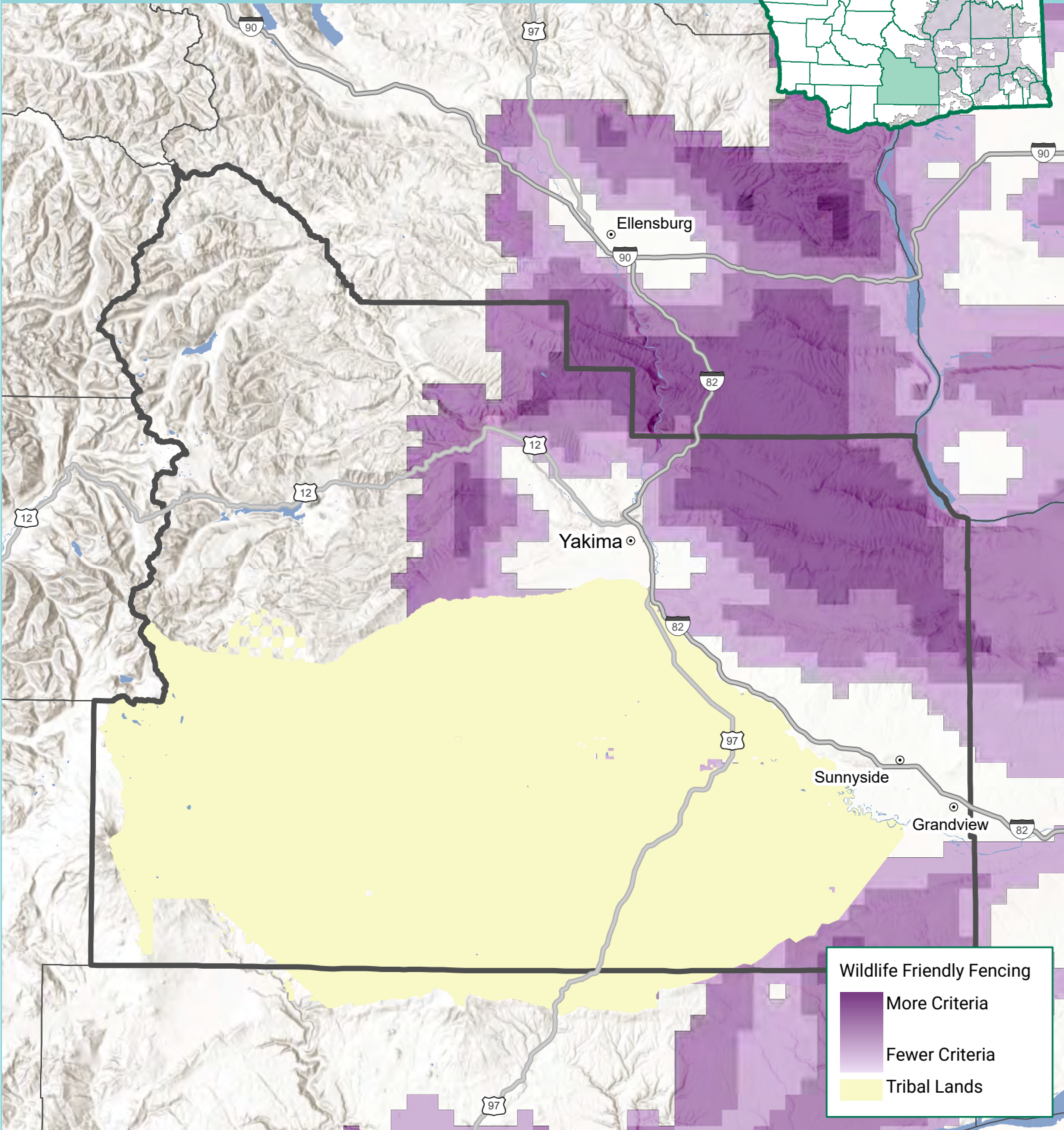
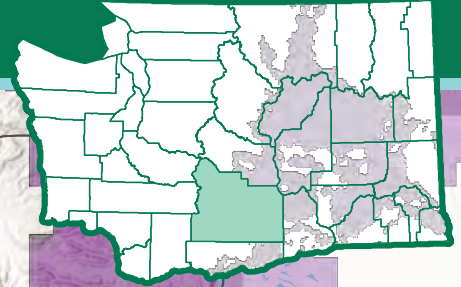


This product is for informational purposes and may not have been prepared for or be suitable for legal, engineering, or surveying purposes. It does not represent an on-the-ground survey and represents only the approximate relative location of property boundaries.

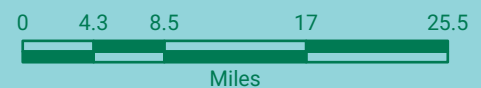
YAKIMA COUNTY

Spatial Selection Criteria for WSRRI Projects

This map pools the various spatial criteria used for evaluating projects submitted to the Washington Shrubsteppe Resiliency and Restoration Initiative. The darker the purple, the more spatial criteria apply to that pixel. However, a proposed project's location alone does not determine project selection.



Department of Fish and Wildlife



This product is for informational purposes and may not have been prepared for or be suitable for legal, engineering, or surveying purposes. It does not represent an on-the-ground survey and represents only the approximate relative location of property boundaries.