



*Love God. Love Neighbor. Grow Disciples.*



## ***Worship & Church Happenings***

**LIFE** MAKES SENSE WHEN YOU  
LIVE IT ON **PURPOSE**....

# **2026 CONSECRATION**

....BY **GIVING** INTENTIONALLY  
ACCORDING TO YOUR **FAITH**

*Check your mailbox for your Q3 statement, along with 2026 Consecration materials!  
You may also find Pledge brochures in the Gathering Space or use the online from below*

[Online Pledge Form](#)



## **CONGREGATIONAL VOTE**

**December 14, 2025**  
after each service

[Meeting Notice & Sample Ballot](#)

# Advent Devotionals

Advent Tablecloth---Twice a week



Sticker Book---Daily



OR

**Advent begins this Sunday, November 30th!**

Advent Devotionals & Sticker Books available in The Gathering Space!

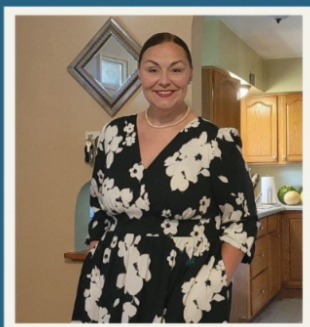
## Christmas Worship

OUR SAVIOR HAS COME

Dec. 24 2:00 | 3:30 | 5:00



Christmas Eve Volunteer Opportunities



Welcome

EMILY TAYLOR

10:30 Nursery  
Lead Volunteer

## Sign Ups & Save the Dates



*Come let us Adore Him*  
An evening of Worship for Women Relax, Rejoice, and Renew

Sunday, December 7  
5:30 – 8:30pm  
New Heights Lutheran Church at The Grove  
Cost \$20

Sign up in the gathering space or online at  
<https://www.newheightslc.org/events>  
When making payment online or with Venmo, please  
note that payment is for:  
Women's Christmas Event and your name.

An Evening of Worship for  
Women: Come Let Us  
Adore Him

Sunday, December 7  
5:30-8:30pm  
New Heights Church  
at The Grove

[Register Here](#)



## Parents Day Out!

\$12  
PER CHILD

Dec. 6th 2-7pm  
Birth-5th

Our Youth are excited to have fun with  
your kiddos! All proceeds are donated  
to Heights Unlimited Community  
Resource Center!

Sign Up by Dec. 1st  
-Limited Spots Available!

Pack a dinner!



Parent's Day Out  
December 6, 2025

Whether you need to get some  
Christmas shopping done or just  
need a date night, our Youth are  
excited to care for your children  
from 2-7pm!

[Register Here -  
Limited Spots  
Available](#)

## Serving & Volunteer Opportunities



# WISCONSIN HEIGHTS AREA CHRISTMAS SHARING TREE

*Sponsored by Heights Unlimited Community Resource Center*

UNWRAPPED TOYS & CLOTHING FOR CHILDREN

**COLLECTION BEGINS 11/30**



## PROPERTY PROJECTS

**Mondays  
10:00-Noon**

Help with various  
projects inside and  
outside at The Grove!

New projects  
each week!

For more info, email or call the office

**Are you looking for physical  
ways to help?**

With a property this size, there are  
always projects! No matter your  
ability, there is something that you  
can help with in your building.

Love God.  
Love Neighbor.  
Grow Disciples.

SELECT 'Events & Calendar'

WELCOME  
Community Happens Here

VISIT US FIND YOUR COMMUNITY THE GR

NEW HEIGHTS NEIGHBORHOOD KIDS

Click 'Sign Ups & Calendar'

Two ways to find  
**Sign Ups & Events**  
on our website!  
[newheightslc.org](http://newheightslc.org)

**Looking for that event or  
volunteer sign up?**

There are two options right on  
our main page.

**Visit our Website**

## Youth Ministry

**High School  
LOCK IN**

**JANUARY 9TH, 7PM-7AM  
@THE GROVE**

Cost: \$10

**Pizza and Games! Invite your Friends!!!**

**Dec. 21st  
6-9pm**

**HIGH SCHOOL  
CHRISTMAS  
PARTY**

Dinner  
Games  
Gifts

**SIGN UP**

**Wear Ugly Christmas Attire!**

Starts September 21 at The Grove! **YOUTH GROUP** 9th-12th Gr. **SUNDAY NIGHTS**  
Come for any or all of the time!

- 5:00-5:30 Open Gym or Help Make Dinner
- 5:30-6:00 Free Dinner
- 6:00-7:00 Large Group Games & Learning
- 7:00-7:30 Small Groups

Contact Kaia with questions: [kaia@newheightsc.org](mailto:kaia@newheightsc.org)

January 23rd 7-10pm **Middle School "After Christmas" Party**

Game Night and Christmas Collision!

- Christmas Outfits
- Christmas Games
- Christmas Snacks

Sign UP Here: 

\$5 

2025-2026 YOUTH BROCHURE

ADDITIONAL YOUTH INFO

ALL YOUTH SIGN UP LINKS

Middle School & High School **Homework and Hang Out**

Join us for open time to do homework and/or hang out in the Youth Room and Gym!

Wednesdays | 3:15-5:15 @ The Grove

Starting September 24<sup>th</sup> - Follows FFN Schedule

Learn more and/or register 

Bus Drop Off Option Available! 



# CELEBRATIONS

## Welcome New Mission Partners!



Beth Collin



Ryan & Kensey Hering  
Ryder, Remi  
Grayson, Reese



Emily Zander  
Cody & Dani Eastman, Loretta  
Lisa & Bryan Parrell



Melissa Olson



Jill & Enos Yoder



Love God. Love Neighbor. Grow Disciples.





## MIDDLE SCHOOL RETREAT

Nov. 21-23 at Expeditions Unlimited

## PRAYER REQUESTS

**Paul Schoepp** - in home hospice

**Gerald Olson** - health related

**Jackie Bacon** (daughter of Ron & Minola Norris) - health related

**Michael Roesch** - health related

**Jeri Springstead** - health related

**Gary Wendt** - health related

### PRAYER REQUESTS

Our Prayer Team will pray for you  
and lift your requests and praises up to God

Find the confidential form at:  
[newheightslc.org/prayer](http://newheightslc.org/prayer)

If you have an urgent need, please contact Deacon Francine Rask,  
our Serve & Care Ministries Director, at 608-212-5100

### Can we pray for you?

You can find the confidential  
form on our website under  
'Grow' or click this link:

**[Prayer \(newheightslc.org\)](http://newheightslc.org)**

**Coming up at The Grove:**

For more information on rentals, resources, and all things Grove, visit:



Grove Website

Fall 2025 Program Catalog

### Upcoming Highlights:



**OPEN PICKLEBALL (ADULTS)**

**MON & THUR | 6 - 8P**  
**TUES, FRI, SAT | 9 - 11A**

**ALL skill levels welcome!**  
\$5 per day or  
\$40 for 10x punchcard

**NEW!**  
Starting Dec 20

Sign up via Playtime Scheduler

<https://playtimescheduler.com>

**THE GROVE**  
314 Anne St.  
Mazomanie

**OPEN GYM**

**MONDAYS | 10A - 4P**

**Drop In | All Ages**

**How Much:** \$5 / family  
\*Recommended Donation

**Where:** The Grove (314 Anne St., Mazo.)  
\*\* Offerings may expand with fall/winter weather & community interest

**THE GROVE**

**ALL AGES WELCOME!**

**HOME SCHOOL ACTIVITY GROUP**

**Wednesdays 1 - 3 pm at The Grove**

**Drop in any or all days**

**Get Connected!**  
Contact Ashley:  
mmad8@yahoo.com

Program Fee (per family):  
\$20 / month | \$10 / drop in

**ADULT + HIGH SCHOOL**

**OPEN (REC) VOLLEYBALL**

**TUESDAYS, 6:30 - 8P**  
BEGINNING OCT 14

314 ANNE ST., MAZOMANIE, WI

**The Grove Regional Community Center**

Recommended Donation:  
\$1/person

**MORE INFO: THEGROVERCC.ORG**

- Sign up to play each week via The Grove's "Recreation" page
- Need 5 or more signed up (each week) to be hosted
- Must be in high school or older to participate

Consider using our space for your upcoming family gatherings and events!  
Reach out to reserve today.





# 'TIS THE SEASON TO GATHER

314 ANNE ST., MAZOMANIE, WI 53560

Reserve Space at The Grove:

 [thegrovercc.org](http://thegrovercc.org)



**Now Enrolling  
3-4yrs!**  
**Care begins Dec. 1st**

608-401-1033 | [cora@nhneighborhoodkids.org](mailto:cora@nhneighborhoodkids.org) | 314 Anne St. Mazo



**Enroll today on our  
website:**  
[nhneighborhoodkids.org](http://nhneighborhoodkids.org)

We're excited to announce the opening of our new daycare program for 3- and 4-year-olds, offering a warm, nurturing environment where children can learn, play, and grow each day. Our program includes daily preschool activities that focus on early learning, creativity, and social development—all while encouraging curiosity and confidence.

We are open Monday through Friday, 7:00 a.m. to 5:30 p.m. We're looking to open with a minimum of seven children, so don't wait to reserve your spot! Come join our caring community where every child is valued and learning is full of joy.

Find more  
info on our  
website



## New Heights Neighborhood Kids

Now enrolling children 3-4 years  
old, with care beginning in the  
new year!

[nhneighborhoodkids.org](http://nhneighborhoodkids.org)

**NHNK Wishlist**

## Recovery Ministries



- Confidential fellowship
- Thursdays @7:00 (doors open at 6:30)
- Enter through Main doors on Anne St

Find additional information & resources at [AA.org](http://AA.org)

## Ongoing References

Wondering what some current  
NHLC needs may be? Check out the  
new wish list here in the E-News!





Check back regularly to see what things are added and removed over time.

Call or email with questions or interest in helping sponsor an item(s)!

## Ongoing Wish List

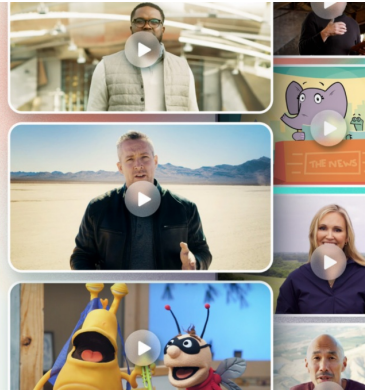
**FOR YOU: 25,000+ Bible Study videos + over 2,000 safe & entertaining children's videos**

### A GIFT FROM NEW HEIGHTS:

Free access to 25,000+ Bible Study videos - anytime, anywhere, from any device



<https://app.rightnowmedia.org/join/NewHeightsLC>



RightNow Media is a tool that can help you live out your faith in every area of your life—at home, at work, and in your community. In addition to series on books of the Bible, RightNow Media has videos for everyone in your family on a variety of topics like marriage, parenting, personal finances, mental health, and more. There's even a **library just for kids with over 2,000 safe, entertaining videos**. RightNow Media has a free app that's available on all major streaming devices so you and your family can access content anywhere, anytime.

<https://app.rightnowmedia.org/join/NewHeightsLC>

## DHH Ministry

Deaf & Hard of Hearing Ministries



Find upcoming interpreter dates on our website:

[newheightslc.org/worship](http://newheightslc.org/worship)

## Worship Page | Interpreter Schedule

*We currently have an interpreter each week at 9:15*



## WORSHIP SCHEDULE

Traditional | 8:00

Praise | 9:15 & 10:30



Office Administrator - Jessica Suchla

Email: [office@newheightslc.org](mailto:office@newheightslc.org)

Office Phone: 608-767-2247

Office Hours: M-F - 9:00-4:00



## Program Staff

Pastor:

Rev. Rob Nelson—

[pastorrob@newheightslc.org](mailto:pastorrob@newheightslc.org)

Serve and Care Ministries Director:

Deacon Francine Rask—

[francine@newheightslc.org](mailto:francine@newheightslc.org)

Children's Faith Formation Director:

Auna Nelson -

[auna@newheightslc.org](mailto:auna@newheightslc.org)

Youth Ministry Director:

Kaia Wedig - [kaia@newheightslc.org](mailto:kaia@newheightslc.org)

Director of The Grove:

Faith Fehlen - [faith@thegrovercc.org](mailto:faith@thegrovercc.org)



Receive this from a friend?

**Subscribe to future E-News [HERE](#)**



New Heights Lutheran Church | 314 Anne St. | PO Box 99 | Mazomanie, WI 53560 US

[Unsubscribe](#) | [Update Profile](#) | [Constant Contact Data Notice](#)



Try email marketing for free today!