



*Love God. Love Neighbor. Grow Disciples.*



## *Worship & Church Happenings*



## CONGREGATIONAL VOTE

December 14, 2025  
after each service

Meeting Notice & Sample Ballot

**Christmas Worship**

OUR SAVIOR HAS COME

Dec. 24 2:00 | 3:30 | 5:00

- 2:00 Worship will feature Guitar led Christmas Hymns
- 3:30 Worship will feature Piano and Brass Christmas Hymns & Nativity Costumes
- 5:00 Worship will feature Piano & Brass Christmas Hymns & Christmas Choir

LIFE MAKES SENSE WHEN YOU  
LIVE IT ON **PURPOSE**....

## 2026 CONSECRATION

....BY **GIVING** INTENTIONALLY  
ACCORDING TO YOUR **FAITH**

*Thank you to all who have submitted their 2026 Giving Intent Pledge Card!  
If you still need to submit your Pledge,  
you may find Pledge brochures in the Gathering Space or use the online form below*

Online Pledge Form

Having a hard time finding a good gift for someone who already has everything?  
How about giving a gift in their honor, to someone else who could really use it?

ELCA  
**GOOD  
GIFTS**  
CATALOG



Gifts that grow the church, fight hunger, and transform lives  
**[goodgifts.elca.org](http://goodgifts.elca.org)**

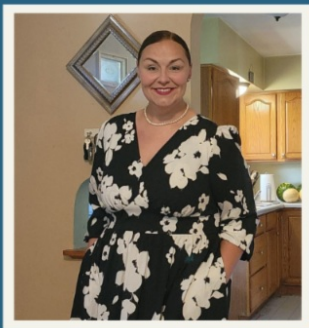
WINTER BREAK

# No Family Faith Night

See you next on January 14th!

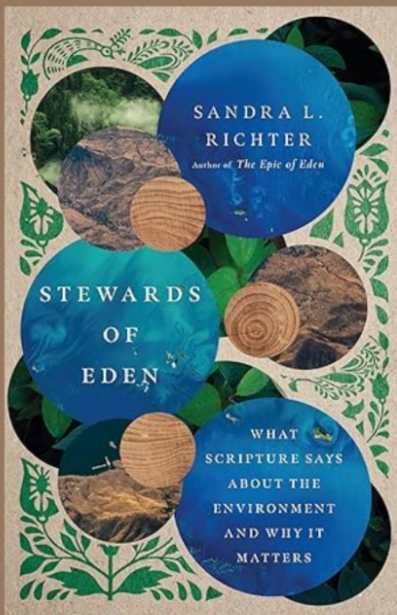
Family Faith  
NIGHT





Welcome  
**EMILY TAYLOR**  
10:30 Nursery  
Lead Volunteer

## Sign Ups & Save the Dates



### SCSW CARE FOR CREATION - BOOK STUDY

SCSW Care for Creation team is offering its 2026 online winter Zoom book study every Thursday from 6:30 to 7:45 pm, January 8 through February 5. Together we'll explore the book, *Stewards of Eden: What Scripture Says About The Environment And Why It Matters*, by Sandra Richter. To participate in the 2026 Synod Book Study, please email Associate to the Bishop for Candidacy and Community Jen Christenson, at [jenc@scsw-elca.org](mailto:jenc@scsw-elca.org).

If you are interested in doing this Zoom book study as a New Heights group, please contact Kristy Meyer ([kdmeyer90@gmail.com](mailto:kdmeyer90@gmail.com)) and she will check into a space available.

## Serving & Volunteer Opportunities

*Christmas Eve*  
WORSHIP LIFE TEAMS



Communion Prep | Communion Servers | Candle Lighters | Parking Assistants

Christmas Eve Volunteers

We're looking for someone to occasionally play the piano at 8:00 worship on Sundays!



If you are interested, please reach out to any staff or member of the Worship Team.

## PROPERTY PROJECTS

**Mondays  
10:00-Noon**

Help with various projects inside and outside at The Grove!

New projects each week!

For more info, email or call the office

## Are you looking for physical ways to help?

With a property this size, there are always projects! No matter your ability, there is something that you can help with in your building.

Love God. Love Neighbor. Grow Disciples.

SELECT 'EVENTS & CALENDAR'

WELCOME  
Community Happens Here.

Click 'Sign Ups & Calendar'

Two ways to find Sign Ups & Events on our website!  
[newheightslc.org](http://newheightslc.org)

## Looking for that event or volunteer sign up?

There are two options right on our main page.

Visit our Website

## Youth Ministry

Starts September 21 at The Grove!

# YOUTH GROUP

9th-12th Gr.

## SUNDAY NIGHTS

Come for any or all of the time!

- 5:00-5:30 Open Gym or Help Make Dinner
- 5:30-6:00 Free Dinner
- 6:00-7:00 Large Group Games & Learning
- 7:00-7:30 Small Groups

Contact Kala with questions: [kala@newheightslc.org](mailto:kala@newheightslc.org)

**Dec. 21st**  
**6-9pm**

# HIGH SCHOOL CHRISTMAS PARTY

Dinner  
Games  
Gifts

SIGN UP

Wear Ugly Christmas Attire!

# High School LOCK IN

**JANUARY 16TH, 7PM-7AM  
@THE GROVE**

Cost: \$10

Pizza and Games! Invite your Friends!!!

**January 23rd 7-10pm**

# Middle School "After Christmas" Party

Game Night and Christmas Collision!

- Christmas Outfits
- Christmas Games
- Christmas Snacks

Sign UP Here:



2025-2026 YOUTH BROCHURE

ADDITIONAL YOUTH INFO

ALL YOUTH SIGN UP LINKS

**Middle School & High School**

## Homework and Hang Out

Join us for open time to do homework and/or hang out in the Youth Room and Gym!

**Wednesdays | 3:15-5:15 @ The Grove**

Starting September 24<sup>th</sup> - Follows FFN Schedule

Learn more and/or register

Bus Drop Off Option Available!



# CELEBRATIONS



We had 53 kiddos and 37 youth filling up The Grove on Saturday for **Parents Day Out!** Thank you to all the parents raising such awesome kids, and sharing them with us! Thank you to the youth for donating their time, loving on the next generation, and raising funds for Heights Unlimited Community Resource Center! It was a day filled with sledding, games, toys, songs, skits, crafts, snuggles, and learning about the Jesus Christmas Story.

## PRAYER REQUESTS

**Gerald Olson** - health related  
**Jackie Bacon** (daughter of Ron & Minola Norris) - health related  
**Jeri Springstead** - health related  
**Gary Wendt** - health related  
**Joyce Schoepp**, as she mourns the passing of her husband Paul



## Can we pray for you?

You can find the confidential form on our website under 'Grow' or click this link:  
**Prayer ([newheightslc.org](https://newheightslc.org))**

## Coming up at The Grove:

For more information on rentals, resources, and all things Grove, visit:



Grove Website

Fall 2025 Program Catalog

## Upcoming Highlights:

# SPRING

## PROGRAM CATALOG

### SUBMISSION DEADLINE

Wednesday,  
December 17

Program Proposal &  
Handbook Info

Email: [faith@thegrovercc.org](mailto:faith@thegrovercc.org) | Visit: [thegrovercc.org](https://thegrovercc.org)



**OPEN PICKLEBALL (ADULTS)**

**MON & THUR | 6 - 8P**  
**TUES, FRI, SAT | 9 - 11A**

**ALL skill levels welcome!**  
 \$5 per day or  
 \$40 for 10x punchcard

**NEW!**  
 Starting Dec 20

Sign up via Playtime Scheduler

**THE GROVE**  
 314 Anne St.  
 Mazomanie

<https://playtimescheduler.com>

**OPEN GYM**

**MONDAYS | 10A - 4P**

**Drop In | All Ages**

**How Much:** \$5 / family  
 \*Recommended Donation

**Where:** The Grove (314 Anne St., Mazo.)  
 \*\* Offerings may expand with fall/winter weather & community interest

**ALL AGES WELCOME!**

**HOME SCHOOL ACTIVITY GROUP**

**Wednesdays 1 - 3 pm at The Grove**  
 Drop in any or all days

**Get Connected!**  
 Contact Ashley:  
 mnads@yahoo.com

**Program Fee (per family):**  
 \$20 / month | \$10 / drop in

**ADULT + HIGH SCHOOL**

**OPEN (REC) VOLLEYBALL**

**TUESDAYS, 6:30 - 8P**  
 BEGINNING OCT 14  
 314 ANNE ST., MAZOMANIE, WI

**The Grove Regional Community Center**  
 Recommended Donation:  
 \$1/person

**MORE INFO: THEGROVERCC.ORG**

- Sign up to play each week via The Grove's "Recreation" page
- Need 5 or more signed up (each week) to be hosted
- Must be in high school or older to participate

**Consider using our space for your upcoming family gatherings and events!**  
**Reach out to reserve today.**

**'TIS THE SEASON TO GATHER**

**314 ANNE ST., MAZOMANIE, WI 53560**

**Reserve Space at The Grove:**

 [thegrovercc.org](http://thegrovercc.org)

## **New Heights Neighborhood Kids**

Now enrolling children 3-4 years old, with care beginning in the new year!

[nhneighborhoodkids.org](http://nhneighborhoodkids.org)



## Now Enrolling 3-4yrs!

### Care begins Dec. 1st

608-401-1033 | [cora@nhneighborhoodkids.org](mailto:cora@nhneighborhoodkids.org) | 314 Anne St. Mazo



**Enroll today on our website:**

[nhneighborhoodkids.org](http://nhneighborhoodkids.org)

We're excited to announce the opening of our new daycare program for 3- and 4-year-olds, offering a warm, nurturing environment where children can learn, play, and grow each day. Our program includes daily preschool activities that focus on early learning, creativity, and social development—all while encouraging curiosity and confidence.


We are open Monday through Friday, 7:00 a.m. to 5:30 p.m. We're looking to open with a minimum of seven children, so don't wait to reserve your spot! Come join our caring community where every child is valued and learning is full of joy.

Find more info on our website



NHNK Wishlist

## Recovery Ministries



- Confidential fellowship**
- Thursdays @7:00 (doors open at 6:30)**
- Enter through Main doors on Anne St**

Find additional information & resources at [AA.org](http://AA.org)

## Ongoing References



Wondering what some current NHLC needs may be? Check out the new wish list here in the E-News! Check back regularly to see what things are added and removed over time.

Ongoing Wish List

Call or email with questions or interest in helping sponsor an item(s)!

## FOR YOU: 25,000+ Bible Study videos + over 2,000 safe & entertaining children's videos

A GIFT FROM  
NEW HEIGHTS:

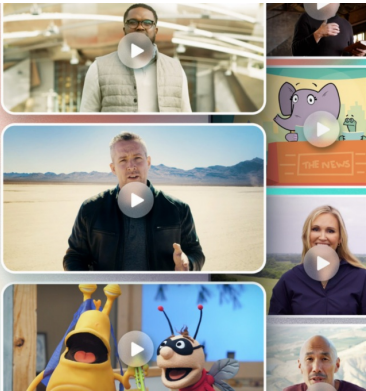
Free access to 25,000+ Bible Study videos - anytime, anywhere, from any device





rightnow  
MEDIA

https://app.rightnowmedia.org/join/NewHeightsLC



RightNow Media is a tool that can help you live out your faith in every area of your life—at home, at work, and in your community. In addition to series on books of the Bible, RightNow Media has videos for everyone in your family on a variety of topics like marriage, parenting, personal finances, mental health, and more. There's even a **library just for kids with over 2,000 safe, entertaining videos**. RightNow Media has a free app that's available on all major streaming devices so you and your family can access content anywhere, anytime.

<https://app.rightnowmedia.org/join/NewHeightsLC>



## DHH Ministry

Deaf & Hard of Hearing Ministries



Find upcoming interpreter dates  
on our website:

[newheightslc.org/worship](http://newheightslc.org/worship)

## Worship Page | Interpreter Schedule

*We currently have an interpreter  
each week at 9:15*



### WORSHIP SCHEDULE

Traditional | 8:00

Praise | 9:15 & 10:30



Office Administrator - Jessica Suchla

Email: [office@newheightslc.org](mailto:office@newheightslc.org)

Office Phone: 608-767-2247

Office Hours: M-F - 9:00-4:00



### Program Staff

Pastor:

Rev. Rob Nelson -

[pastorrob@newheightslc.org](mailto:pastorrob@newheightslc.org)

Serve and Care Ministries Director:

Deacon Francine Rask -

[francine@newheightslc.org](mailto:francine@newheightslc.org)

Children's Faith Formation Director:

Auna Nelson -

[auna@newheightslc.org](mailto:auna@newheightslc.org)

Youth Ministry Director:

Kaia Wedig - [kaia@newheightslc.org](mailto:kaia@newheightslc.org)

Director of The Grove:

Faith Fehlen - [faith@thegrovercc.org](mailto:faith@thegrovercc.org)



Receive this from a friend?

Subscribe to future E-News [HERE](#)



New Heights Lutheran Church | 314 Anne St. | PO Box 99 | Mazomanie, WI 53560 US

[Unsubscribe](#) | [Update Profile](#) | [Constant Contact Data Notice](#)



Try email marketing for free today!