

Trevor Square, SW7

APPROX. GROSS INTERNAL AREA *
2920 Sq Ft - 271.36 Sq M
(Excluding Vault)

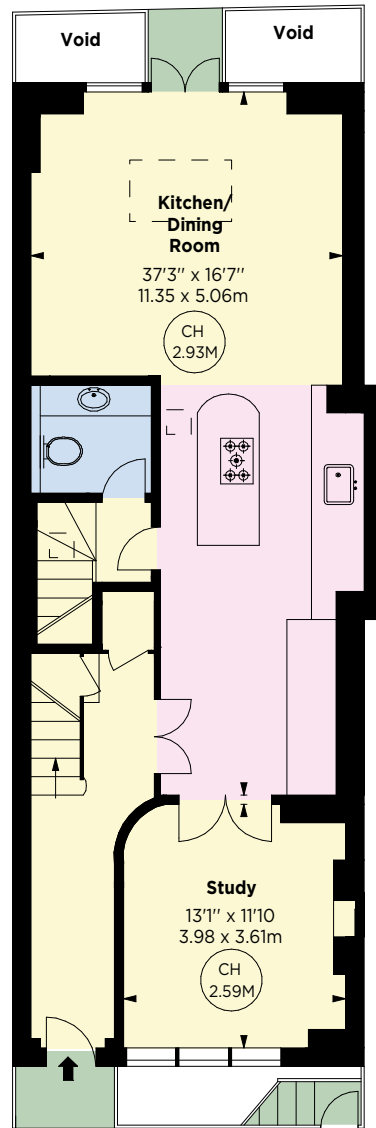
APPROX. VAULT AREA *
51 Sq Ft - 4.74 Sq M

TOTAL APPROX. GROSS INTERNAL AREA *
2971 Sq Ft - 276.10 Sq M

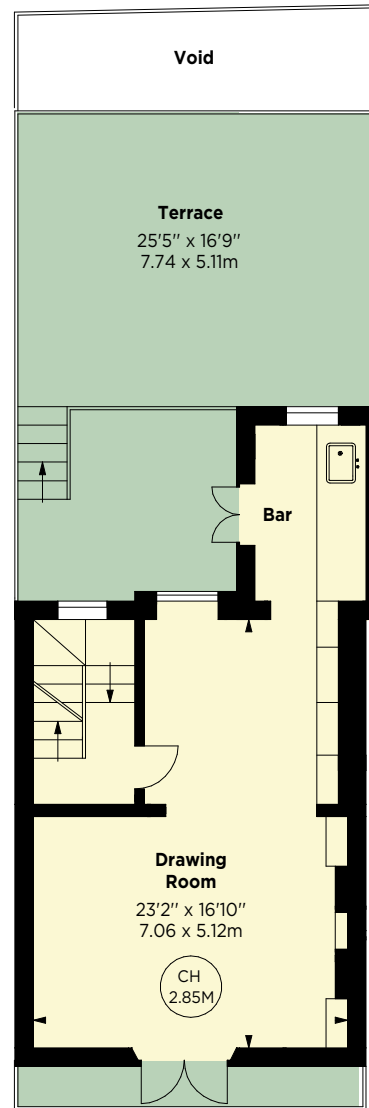


This floorplan is for GUIDANCE ONLY and NOT FOR VALUATION purposes.

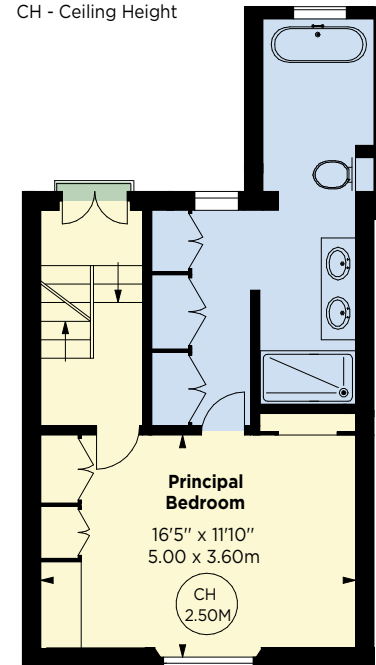
Key :
CH - Ceiling Height



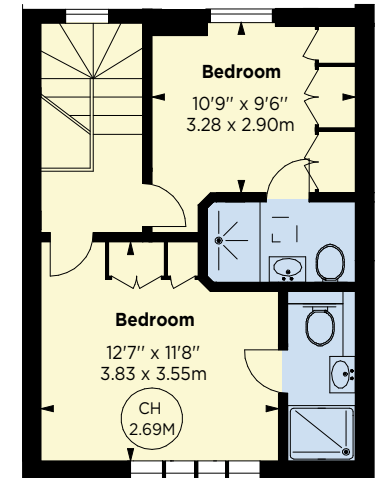
GROUND FLOOR



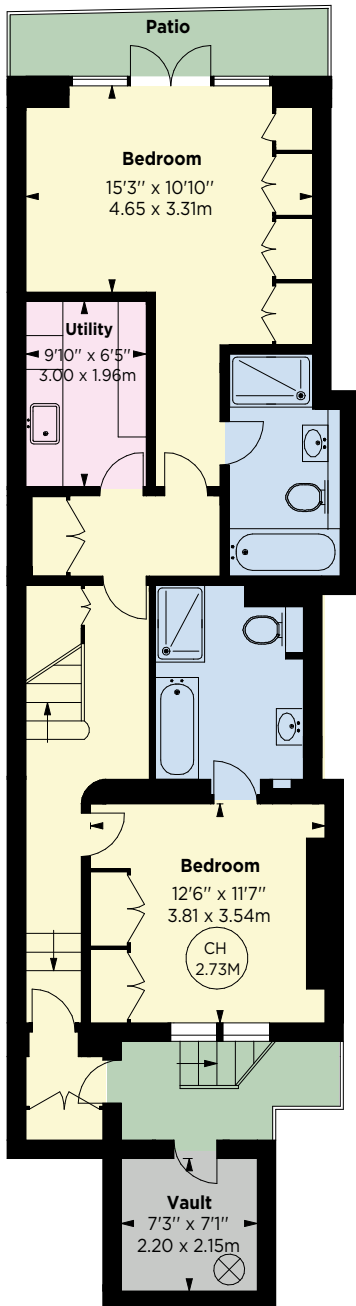
FIRST FLOOR



SECOND FLOOR



THIRD FLOOR



LOWER GROUND FLOOR