

JEREMY
DAVIDSON
PROPERTY CONSULTANTS

EATON PLACE

A fabulous triple aspect lateral apartment situated in a prominent corner building in a prime position in Eaton Place.

The apartment benefits from 3.25 metre ceiling heights and has full AC/AV and underfloor heating throughout.

£4.25M | Lease: 99 years





















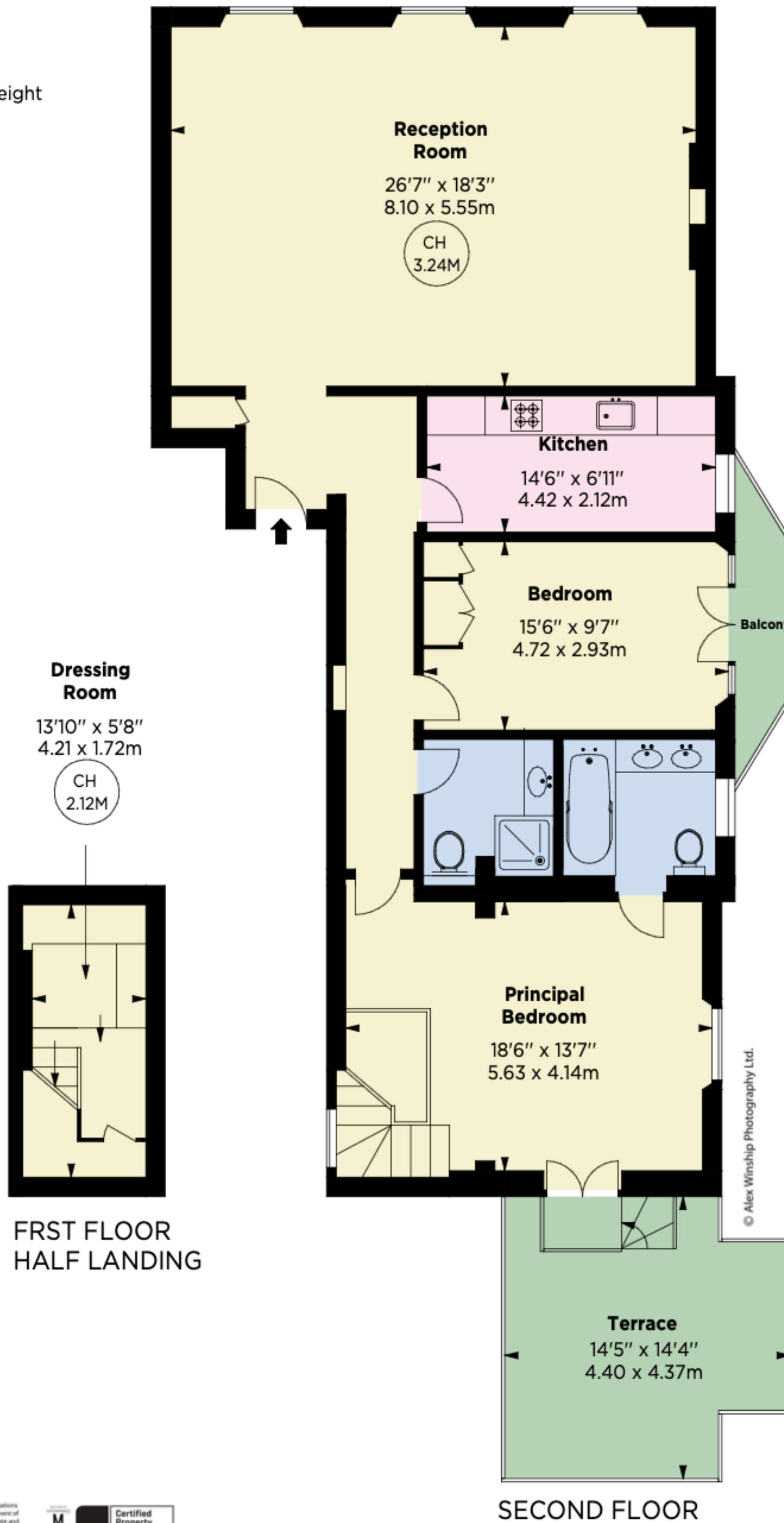


Eaton Place, SW1

APPROX. GROSS INTERNAL AREA *
1364 Sq Ft - 126.81 Sq M

This floorplan is for GUIDANCE ONLY and NOT FOR VALUATION purposes.

Key :
CH - Ceiling Height



© Alex Winship Photography Ltd.