

HORNE

BROS

Registered

mb

Builder Joiners Glaziers

• Building/Alterations

• Glass

• Joinery

• Kitchens

• Design Work

• Concrete Cutting

• Automotive Glass

Old Station Road, Ohakune. Phone 06-385-8444

Ruapehu

Bulletin

23 July 2025

Issue No 2067

P: 06 385 8532 E: ads@ruapehubulletin.co.nz

Avalanche traps skiers P2

Science gift to Army Museum P3

Solar power gifts P7

Win for Ohakune squash team P12

Decision done: Whanganui & Ruapehu put water into the same bucket

By Moana Ellis, Local Democracy Reporting

Whanganui councillors have voted 8-5 to form a new entity with Ruapehu to manage the delivery of water services.

Whanganui and Ruapehu district councils will be the shareholders of the new council-controlled organisation (CCO) that will own the water assets.

"This is a big moment in this council's history," Whanganui's mayor Andrew Tripe said.

The entity will include drinking water, wastewater and possibly stormwater assets and services, and operate on non-harmonised or 'local pricing'.

This means residents will be charged only for the cost-of-service delivery in their own district, while still benefiting from a share of the savings gained through scale.

Whanganui was the last among neighbouring authorities to choose a delivery model.

At a meeting on Tuesday last week, councillors debated balancing cost efficiencies gained in a larger grouping with the opportunity for local voice and the council's obligations to Te Awa Tupua legislation.

Following the decisions of other councils, Whanganui weighed up four options:

- a two-council CCO owned by Whanganui and Ruapehu district councils,
- a single council CCO owned by Whanganui District Council,
- a multi-council CCO owned by Whanganui, Rangitikei, Horowhenua District Councils and Palmerston North City Council, with the door open for Ruapehu,
- continuing with a standalone in-house business unit.

Council staff recommended a joint entity with Ruapehu.

Savings

The council's Local Water Done Well transition manager Kathryn Stewart said the joint models were projected to outperform an in-house business unit.

The two-council model would save water users an estimated \$620 a year or \$18,000 over a 30-year period.

A five-council model would deliver customer savings of \$870 a year.

Chief executive David Langford told councillors that cost efficiency

Turn to Page 2

Waioiru gunners primed for historic exercise

ABOVE AND BELOW: 16th Field Regiment gunners training in the shadow of Mount Ruapehu in the Waioiru Military Training Area.

New Zealand Army gunners from 16th Field Regiment, Royal Regiment of New Zealand Artillery (RNZA) recently conducted a mortar live firing exercise in the Waioiru Military Training Area in preparation for a large exercise in Papua New Guinea (PNG) later this month.

16th Field Regiment will send a training team to PNG to deliver mortar training to the Papua New Guinea Defence Force (PNGDF), culminating with a live fire exercise. PNGDF will reciprocate by delivering jungle training to NZ Army gunners.

This will be the first time 16th Field Regiment will have the opportunity to train alongside our PNGDF partners, and the contingent is looking forward to both assisting the development of their mortar capability, and to receive training from the PNGDF.

Commanding Officer of 16th Field Regiment, Lieutenant Colonel Brent Morris said this type of reciprocal training activity showed the versatility and relevance RNZA brings to the New Zealand Defence Force.

"This is a great opportunity for our

officers and soldiers to deliver effective training to a partner nation, and to learn from them in their own areas of expertise. Jungle operations are an area PNGDF excel at, and we are excited to receive training from their instructors."

He said the next stage is preparing the contingent for deployment and working with logistics and RNZAF counterparts to get our personnel and equipment to PNG.

"Deploying a large contingent and a

considerable amount of freight means multiple C-130J-30 Hercules flights. Once we're on the ground at Port Moresby we will be supported by the PNGDF," said Lieutenant Colonel Morris.

"The PNGDF and the New Zealand Army are both focused on warfighting, and opportunities like these – where we enhance each other's warfighting capability - are vital in maintaining that focus," said Lieutenant Colonel Morris.

ALTOGETHER

LOCAL

Discover the Ruapehu region with Bayleys Real Estate.

What do we have that makes us truly unique? We have a culture of togetherness and of connectedness. It's what makes Bayleys, Bayleys. Bayleys is Altogether Better. If you are thinking about buying or selling, contact us today.

BAYLEYS

ALTOGETHER BETTER

Discover the Ruapehu region with Bayleys Real Estate.

What do we have that makes us truly unique? We have a culture of togetherness and of connectedness. It's what makes Bayleys, Bayleys. Bayleys is Altogether Better. If you are thinking about buying or selling, contact us today.

BAYLEYS

ALTOGETHER BETTER

Bayleys Ruapehu

16 Goldfinch Street | 06 385 0170

bayleys.co.nz/ruapehu

BARTLEY REAL ESTATE LTD, BAYLEYS, LICENSED UNDER THE REA ACT 2008

Residential / Lifestyle / Commercial / Rural

RUAPEHU BULLETIN 23 July 2025 • 1

Whanganui & Ruapehu together for water

From Page 1

modelling did not set precise savings but was a mechanism for comparing options.

“The numbers are there to help you compare options, they’re not predictions for the future. Hanging your hopes on exactly \$620 per year for 30 years is an erroneous use of the model.”

Langford said joining a bigger grouping of councils would likely provide greater savings for households but “bigger is better” was a misnomer.

He cautioned councillors against making a decision on cost savings alone.

“It’s not cost efficiency at any cost. As you get bigger, your ability to influence and the size of your voice gets smaller. [It is] a trade-off between how much you make in savings and how much voice you retain.”

Much consideration had been given to Te Awa Tupua legislation, Langford said.

The two-council model with Ruapehu would create a water service delivery entity that was exclusively focused on the Whanganui catchment.

It would ensure governance remained close to the community and was not consumed by a larger entity.

Stewart said all joint options would bring opportunity, including increased collaboration, resilience, and staff and technical capacity.

But the two-council model would also preserve local voice and influence and put Te Awa Tupua and the wellbeing “of all our connected communities” at the centre of decision-making.

The CCO would manage the delivery of water services for about 24,000

connections.

The councils would appoint a board of independent, professional directors who would be responsible for making decisions. The board would be informed by expectations set out and agreed upon by the two councils.

Advantages included improved ability to fund infrastructure investment, maintenance and compliance costs and improve environmental outcomes, and greater ability to respond to emergencies, manage risks and adapt to future challenges like climate change.

In favour of the two-council partnership were: Tripe, Glenda Brown, Josh Chandulal-Mackay, Jenny Duncan, Ross Fallen, Kate Joblin, Charlotte Melser, Peter Oskam. Against were: Deputy mayor Helen Craig, Charlie Anderson, Philippa Baker-Hogan, Michael Law and Rob Vinsen.

Ruapehu in favour

The Ruapehu council voted 6-4 in favour of the two-council model the week before.

Ruapehu chief executive Clive Manley welcomed Whanganui’s decision and said it was an important milestone that enabled both councils to begin work on detailed planning and implementation.

“This has been a long and complex process, and a significant amount of work has gone into getting us to this point,” said Manley.

“Now that we have clarity and agreement from both councils, staff can progress the necessary steps to implement the new water services delivery model. Until we had confirmation of our partner council,



The two-council water services model with Ruapehu is expected to save Whanganui water users \$620 a year. Photo: Tuakana Te Tana.

there were key aspects we simply couldn’t move forward on.”

“The target is for the WS-CCO to be fully operational by mid-2027. In the meantime, water users in Ruapehu will continue to be serviced by our existing provider, Veolia, with no change to service levels.”

Mr Manley added that this partnership builds on the strong history of collaboration between the two councils.

“This new water services partnership adds to a growing list of shared services between Ruapehu and Whanganui.

“Both councils are committed to continuing to explore opportunities that improve efficiency and reduce costs for our communities.”

While Whanganui voted to include stormwater in the new CCO, Ruapehu was still considering whether to transfer its stormwater services or retain them in-house. This decision would not affect setting up the new CCO,

Manley said.

“We’ll make a decision on stormwater in due course, but it doesn’t prevent us from moving forward with the rest,” Manley said.

“Both councils are committed to continuing to explore opportunities that improve efficiency and reduce costs for our communities.”

Council officers will now finalise a Water Services Delivery Plan for adoption at the next council meeting in August. The council will then submit its final Water Services Delivery Plan to central government by the early-September deadline. If approved, implementation will begin later this year.

The new water services CCO could be established by mid-2026 and fully operational by mid-2027.

LDR is local body journalism co-funded by RNZ and NZ On Air

Eating out in the Ruapehu District

Call 06 385 8532 to list your business here

KINGS BAR & RESTAURANT

3 Rimu St Ohakune Junction Ph: 06 385 8648

Est in 1913, historic Kings offers an inviting menu by international chefs, a great selection of boutique wines and craft breweries including award winning Ruapehu Brewing Co beers in the fridge and on tap. See our Facebook page for what's on. Please check our open times as these will vary.

LA PIZZERIA

6 Thames St, Ohakune Junction Ph: 06 385 8558

Ohakune's most famous pizza restaurant, for over 37 years we have been serving Ohakune's best pizza. Come up and see us in the "Junction" at the end of the Old Coach Road and try one of our hot, tasty, handmade pizzas. Same great menu available for takeaway. Open 7 days, 4 – late. Check us out online at: www.lapizzeria.co.nz

LKNZ LODGE & CAFE

1 Rata St, Ohakune Ph: 027 257 LKNZ (5569)

Open every day. Menu includes our delicious big breakfast, creamy mushrooms, homemade soups, wedges, nachos, toasties, waffles and more ... Volcanic coffee, muffins & scones, real fruit smoothies and thick shakes. Dine in or takeaway. Onsite parking. www.lknz.co.nz

POWDERKEG

Bottom of the mountain road Ph: 06 385 8888

For over 35 years, The Powderkeg has been serving up exceptional food and service in a warm, welcoming atmosphere. Whether you're enjoying a sunny afternoon on our spacious balcony or indulging in our weekly specials like Sushi Fridays and Smokehouse Sundays, there's always something to look forward to. Join us for an unforgettable dining experience and follow us on Instagram @powderkegbar for the latest updates and mouthwatering offers! Open 7am till late daily.

THE CYPRUS TREE

79 Clyde St, Ohakune Ph: 06 385 8857

Check out our new menu. Kiwi craft beers, boutique wines and cocktails to quench that thirst. Playroom for the kids, foosball, air hockey and spaces to keep the kids entertained. Spectacular mountain views. A great place for casual get togethers or special occasions. Open every day.

UTOPIA CAFE

47 Clyde St, Ohakune Ph: 06 385 9120

Open 7 days from 8am – 3pm for all day breakfast and lunch. NOW SERVING HAVANA COFFEE. A cosy memorable atmosphere with a great range of cabinet food and beverages, Frappé and smoothies. Vegan/Gluten-free options for both savoury and sweet are available. Speedy free Wi-Fi! A perfect place for everybody!

Ruapehu Events & What's On

JULY 2025

Catalyst Performance Agronomy B Grade
(and below) Squash tournament **25-26 July**
Enter via NZ Squash website or via the Ohakune Squash Club facebook page

AUGUST 2025

Pure Shredder **3 August**
Visit www.pureturoa.nz or find us on Facebook or Instagram @turoa.nz for up to date information.

Go Pink for Breast Cancer **2 August**
Visit www.pureturoa.nz or find us on Facebook or Instagram @turoa.nz for up to date information.

Twilight Ski & Music **2 August**
Details at www.whakapapa.com

Girls Who Shred **9 August**
Visit www.pureturoa.nz or find us on Facebook or Instagram @turoa.nz for up to date information.

Elvis the King and Queens of Country **16 August**
Royal Theatre Raetihi

Waimarino Cup - Junior Interfields **16 - 17 August**
Registrations opening soon via Snowsports New Zealand. Snowsports New Zealand www.snowsports.co.nz

Tūroa Slopestyle Mini Shred (under 14) **16 August**
Visit www.pureturoa.nz or find us on Facebook or Instagram @turoa.nz for up to date information.

North Island Champs - National Points **22 - 23 August**
Registrations opening soon via Snowsports New Zealand. Snowsports New Zealand www.snowsports.co.nz

For all your ski board and bike rental needs

T C B

Ski, Board & Bike
Cnr Ayr St & Goldfinch St, Ohakune
06-385-8433 tcb.nz

FOR MORE DETAILS, GO TO
OHAKUNE.INFO OR RUAPEHUNOW.CO.NZ

IT'S FREE TO LIST SO PLEASE LET US KNOW IF YOU HAVE AN EVENT COMING UP ...
ADS@RUAPEHUBULLETIN.CO.NZ
LINK YOUR EVENT TO EVENTFINDA FOR FREE

Avalanche traps ski tourers

A large, serious avalanche was triggered by a group of back country skiers on Friday. Photo supplied.

A serious avalanche involvement was reported on Mt Ruapehu on Friday 18 July.

A party of six was ski touring in the Mount Ruapehu backcountry, near Glacier Knob above Whakapapa Ski Area, when they triggered an avalanche whilst skinning (walking, usually uphill, on skis with skins attached to the base of the skis).

Four members of the party were partially buried. One member was buried with only their face and arm free and one member was completely buried with only their hand protruding.

The completely buried member had an airway excavated within two minutes and everyone was fully excavated within 10 minutes.

The avalanche was reported to be 50 metres long and 50m wide at a depth of 40cm.

The group promptly submitted a public observation with the details. No injuries were reported.

The full public observation is at: avalanche.net.nz/observation/1670

“Sharing information of this nature is crucial to help improve everyone in the alpine community’s safety, trip planning, and decision making in the backcountry,” states NZ Avalanche Advisory.

“A huge thanks to the group for sharing a timely report.”

Raetihi Ohakune Garden Club presents ... Wally Richards ... gardening the healthy way!

Sunday 27 July – 1.30pm, Lions Den, Arawa St, Ohakune
All welcome

Scientific breakthrough gift for Army Museum

A Kiwi soldier's record of a scientific breakthrough in water sterilisation documented just after World War I has been gifted to the National Army Museum Te Mata Toa in Waiouru.

The slim hand-written journal was spotted recently by volunteer staff at the Hospice Mid-Northland sorting and distribution shed in Kerikeri who – after discovering a rare World War II Pacific battle souvenir a couple of years ago – have kept a close eye out for any further items with possible heritage interest ever since.

Their vigilance paid off with the find which has shed light on a modern sterilisation technique recorded in detail over a century ago by Private Hugh Montgomery Purdie, a young plumber from Auckland serving with the New Zealand Expeditionary Force in Europe.

The private notebook contains handwritten entries on everything from basic physics formulae to chemical compounds and was passed on to Heritage New Zealand Pouhere Taonga staff based in Kerikeri for an initial assessment. What they found was pure gold.

"Purdie's observations of a particular method of water sterilisation are remarkable," says Heritage New Zealand Pouhere Taonga Northland Manager Bill Edwards.

"What he describes is a method of sterilising water using ultra violet light generated by large military searchlights, which he had likely come across in France."

Purdie's notebook records his observations:

"...the water in passing to the outlet must first traverse the surface of the lamp, and thus become exposed to the maximum ultra violet radiation. The process was subjected to severe tests. The water to be treated was drawn from the Seine below Paris and was further contaminated with germs of cholera, diphtheria – indeed every effort was made to make the water as poisonous as possible."

The results were impressive.

"The germ-contaminated water was then drawn off in the usual manner being induced to flow over the lamp, and upon

withdrawal was found to be absolutely sterile – all contagious germs having been completely destroyed as a result of exposure to the ultra violet rays."

Purdie also recorded that the test was sustained for a long period of time, and it was discovered that after 3000 hours continuous operation "the water was as germ proof as the first gallon drawn."

A qualified plumber with a clear understanding of the importance of good sanitation for public health, Purdie was impressed enough to record the information about the sterilisation method in great detail.

Widely accepted

"What he would not have known was that after technology improved in the 1930s the UV method would become a widely accepted and scientifically proven method of treating water adopted by large cities around the world," says Bill.

"What's also impressive is Purdie's ability to see the potential for this new technology to improve the lives of many, suggesting that it would only take a small dynamo to feed the lamps with the necessary current."

A little Kiwi ingenuity would be all that was required:

"Being that the automobile can be adapted to operate searchlights by the [power] of the car's own engine, its application should prove equally simple."

Interestingly, Paris' drinking water today is filtered using a combination of carbon, UV light and ozone to kill the pollutants. To kill the bugs they use – you guessed it – UV light in a process that is chemical free.

"Purdie must have felt the French were onto something with UV light as a sterilising agent, and he was absolutely right. The fact that he took time to record what he knew of the process in such detail shows he could see the potential of the method," he says.

According to Purdie's war records, after the Armistice in November 1918 he was promoted to sergeant then transferred from the 3rd Auckland Company 1st Battalion of the New Zealand Expeditionary Force



National Army Museum Te Mata Toa Collections and Exhibitions Manager, Caitlin Timmer-Arends, with James Robinson of Heritage New Zealand Pouhere Taonga who recently presented the museum with Hugh Purdie's journal.

to the army's Education Department. It's possible that the writings in his notebook were recorded notes that he may have used in some of the teaching that he may have undertaken in his new role.

The National Army Museum at Waiouru was keen to add the notebook to its collection of World War I soldiers' diaries and memorabilia.

Caitlin Timmer-Arends, the Collections and Exhibitions Manager at the National Army Museum says, "Purdie's notebook is an incredible piece of the New Zealand First World War experience. We are grateful for the diligence of the Hos-

pice Mid-Northland staff and volunteers, and thankful to my former colleagues at Heritage New Zealand Pouhere Taonga for their part in the donation."

According to Bill, acknowledgement must go to Les Sykes at Kerikeri Hospice who investigates items that are brought in for wider heritage signifi-

cance, before running these past Heritage New Zealand Northland staff. In the case of Purdie's diary, his hunch was absolutely spot on ac-

Turn to Page 5

Crater Lake cooling looks to have ended

Since last week's update, Te Wai ā-moe (Ruapehu Crater Lake) seems to have stopped cooling, with daily temperatures remaining at around 11°C, reports GNS.

Sulphur dioxide gas emissions rose briefly to 800 tonnes per day before declining again to ~200 t/day, and a swarm of very small earthquakes occurred beneath the volcano, although these were too small to be precisely located.

"Together, these minor changes suggest that a new heating episode could be starting at the Crater Lake," reports duty volcanologist Michael Rosenberg.

No other unusual changes have been observed, and the Volcanic Alert Level remains at 1 and the Aviation Colour Code at Green.

"Episodes of renewed heating beneath Ruapehu are typically preceded by local earthquakes and signs of heat and gas flowing upwards into the volcano. Clusters of very small earthquakes were detected by some of the

seismometers on Ruapehu, but their exact locations and depth could not be determined.

"There is no evidence they are directly related to the swarm of earthquakes that occurred two weeks ago 10km east of Ruapehu. Volcanic tremor, a key indicator of volcanic fluid movement, did not notably change and remains weak."

During the past month, the temperature of Ruapehu's Crater Lake has stopped declining and remained steady around ~10 to 12°C "which is low but still indicates a continuous low level heat input".

"Last week's pulse of volcanic sulphur gas measured by our continuous gas emission detectors shows that the top of the volcano is not sealed and a lack of other observed changes at Ruapehu indicates that the volcano continues to exhibit typical low levels of activity," says Rosenberg.



RUAPEHU COLLEGE PERFORMING ARTS DEPARTMENT

proudly presents

ADAPTED FROM WORKS BY LESLEY BROWN
IN ASSOCIATION WITH PLAYMARKET NZ

SCHOOL DAZE

A SERIES OF DRAMATIC & COMEDIC VIGNETTES

23-26 JULY

BECAUSE DRAMA IS STILL
IN THE CURRICULUM!



SCAN TO BOOK YOUR TICKETS!
Strictly limited seating



RTB HELI LTD

FOR ALL YOUR HELI REQUIREMENTS

Whanganui | Taihape | Raetihi - Servicing central & lower North Island

✓ Spraying ✓ Fert ✓ Culling ✓ Seeding ✓ Burn offs ✓ Lifting

CALL STEVE 027 274 8712

www.rtbheli.co.nz

GIVE STEVE A CALL TO SORT YOUR WINTER SPRAYING



trusteebank
Wanganui

18% p.a.
FOR 24 MONTHS

OHAKUNE MUNICIPAL LIBRARY

WAIMARINO BULLETIN

VOICE OF THE RUAPEHU REGION
Tuesday 23 July, 1985. Volume 3 No. 9

**SUNBEAM
LODGE**

licensed restaurant
& cocktail bar

Phone
58470
Ohakune



Ratepayers' questions answered — but no rates review

Concerned Ohakune ratepayers now have little chance of having their recent rates increase reviewed.

At Thursday's monthly meeting of Ohakune Borough Council the Borough's Mayor, Bill Taylor, hit out at the council's critics.

He said that the rates had been fixed and the petition which is circulating in the town could not make councillors go through the procedure again.

Amongst those who came in for a lashing from headmaster Taylor's tongue were:

★ **The concerned ratepayers group**, who had failed to include the Mayor in their discussion sessions.

★ **The press**, for failing to give sufficient coverage to the rating question at the estimates stage.

★ **Winstone Samsung management**, for speaking to the press about the company's rates hike rather than speaking to the council about their grievance.

★ **Disgruntled ratepayers**, who could have worked out their individual rates rise by doing some "simple arithmetic" before the council confirmed the new rate.

★ **The whole town**, for not showing enough interest in the council's work.

The Mayor said he had continually issued invitations to the public to attend council meetings and contribute their thoughts and

feelings, but the invitations had been "to little avail."

"This is particularly important in a small community where we are friends, neighbours and parents," he said.

Mayor Taylor added that the invitation still stands.

Stating he had been "personally hurt" by statements which implied he had misled ratepayers, the Mayor said councillors were in a situation where they were told they were doing insufficient to promote the town and were then told they were doing too much.

"It is a case of damned if you do and damned if you don't," he said.

After reading his prepared statement to Thursday's meeting, the Mayor invited the ratepayers' group representatives to address the meeting.

Mr Dave Scott told councillors they were not being judged personally and their efforts and time given to the town were appreciated.

"Let us say right now we want to address the problem of high rate increases. We do not want to address personalities."

"There has been publicity and private comment by ratepayers about council — and no doubt private comment by councillors about certain ratepayers. Some cases are valid, most are not!"

"Loose comments do not solve problems that our nice town faces today."

"It is obvious that the ratepayers are in a state of shock since receipt of their 85/86 rate demands — most have to pay 50% to 60% more than last year."

"People don't understand why that is when the total dollar take required by council is around the 35%."

Speaking about the petition which is currently circulating in the town, Mr Scott said, "We endeavoured to avoid a petition being circulated by having discussions with the council first."

"However, shocked people have wished to voice their personal objections to council by this method immediately — you can judge the real concern of your townsfolk and supporters when the petition has run its time and is presented."

Concerning this year's rate, Mr Scott conceded that "contrary to previous comments we understand that should council's 1985/86 rate demand be correct and legal there is no way ratepayers cannot pay rates without incurring further costs to themselves."

But he added "Our town cannot afford a split — we urge all councillors to open their guard and seek constructive advice from ratepayers."

"Councillors have to ensure that their personal desire to see the town progress is adjusted to the purse of the payer."

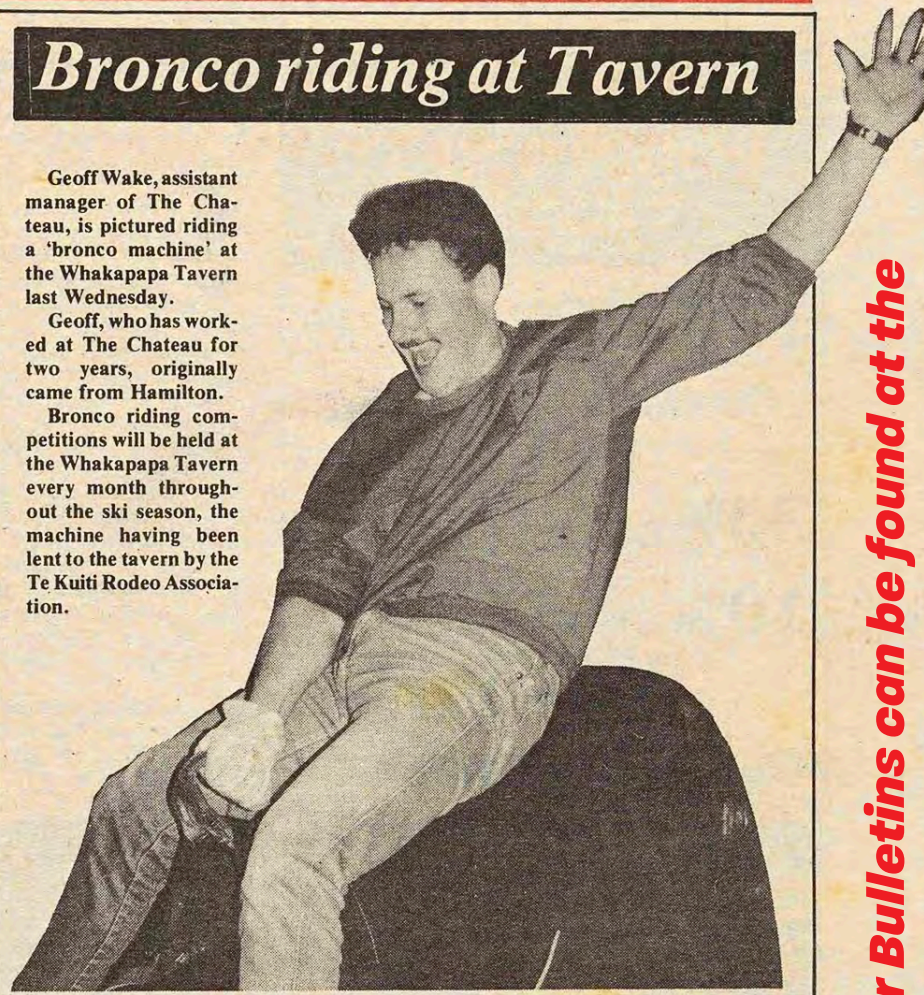
"At the present time some

Bronco riding at Tavern

Geoff Wake, assistant manager of The Chateau, is pictured riding a 'bronco machine' at the Whakapapa Tavern last Wednesday.

Geoff, who has worked at The Chateau for two years, originally came from Hamilton.

Bronco riding competitions will be held at the Whakapapa Tavern every month throughout the ski season, the machine having been lent to the tavern by the Te Kuiti Rodeo Association.



projects may just have to be cut again and again — until a better rate spread is adopted."

Mr Scott concluded, "It appears that council has to either cut costs by extreme efficiency or obtain a greater income on a fairer basis to manage borough expenses."

The concerned ratepayers

Question:

Due to the disproportionate 1985/86 rate increases, Council undertake to institute immediate steps for the introduction of a differential or fairer rate system for the 1986/87 year?

group had presented the council with twelve written questions on its rating policy prior to the meeting and asked that "immediate and definite action be forthcoming so that 1986/87 rates are not presented to us with similar increases to this year."

The questions — and the council's answers were as follows:—

Skier dies

An 18-year-old skier died on Saturday after falling over a bluff on the Whakapapa Skifield.

David Graham Paton, 18, of Manurewa, Auckland, fell about 40 metres into Broken Leg Gully while skiing in 'blizzard conditions'.

Due to strong winds the skifield was closed at 11.30am on Saturday.

The young skier's body was recovered from the gully on Sunday morning by a Tongariro National Park Board ski patrol.

Continued on page 3

Mrs Ruby Parker, of Raetihi is counting down the days for her 100th birthday and today (Tuesday) it is just 100 days to go.

Mrs Parker has lived in her Raetihi home for 58 years.

She was born in Kaita, a town between Victoria and Adelaide in Australia and came to New Zealand in 1909 with her husband Alfred.

The couple first settled in Dannevirke where they stayed for three years and had the first two of their eight children.

They then moved to Taihape for a short time, and on to Rangataua. In 1917 they came to Raetihi, where Mr Parker was manager of the bush work at Smith's Mill.

Mrs Parker remembers the area around her Raetihi house was "like a big park" in the early days, "with trees everywhere you looked."

Mr Parker died eleven years ago, aged 89, and since



Mrs Ruby Parker pictured in her Raetihi home.

then Mrs Parker has lived on her own, but is constantly being visited by friends and relatives.

"I also have some sheep out in the paddock which

keep me company," she says.

Mrs Parker's eldest daughter, Ruby, says that many of her mother's surviving children, 22 grandchildren,

'numerous' great grandchildren and two great great grandchildren will be attending the 100th birthday celebrations on 30th October.

100th birthday countdown

RUAPEHU HOTEL

Tuesday 30th July

Ruapehu Hotel Ltd Charity
Trust Fund

presents the screening of

"CAME A HOT FRIDAY"
at the Theatre Royal, Raetihi

Cheese & Wine 7.00-7.30pm
at the Ruapehu Hotel

FILM COMMENCES 7.30-9.00pm

Supper 9.00pm Ruapehu Hotel
Music courtesy of "INTRO"
Tickets limited \$20 single

Available from:

Ruapehu Hotel, Ohakune Hotel
& Boyds Ltd.

NEWS
58-681

Your Community Newspaper

ADS
58-532

The news, 40 years ago today. The other pages and other Bulletins can be found at the
Preserving Local History website: preservinglocalhistory.recollectcms.com

Letters

Transparency water

Many people have asked whether the Council's decision to adopt the two-council model — rejecting expert advice and the four-council option supported in the Local Water Done Well survey — can be reversed. The short answer is no. Whanganui Council's choice to partner with Ruapehu finalised it. Still, the process offers lessons for the new council to be elected in October.

Press reports have revealed that while public meetings and surveys were being held in Taumarunui and Ohakune, councillors opposing the four-council model were quietly consulting with iwi — Te Waiū-o-te Ika and Te Awa Tepua/Te Kōpuka — on their stance. This was never disclosed in public meetings or speeches favouring the Whanganui option, only vague references to "local voices." Councillor Neeson, a mayoral candidate, wrote recently that there was a "four-hour intensive debate" with staff about options. Yet the behind-the-scenes iwi consultation was absent from that discussion. It appears that for those backing Whanganui, the outcome had already been decided. The council officer's report might as well have been a weather update.

Council has a long record of conducting consultations that ultimately support a predetermined choice. At least that habit remained consistent. However, councillors arguing after the fact that obligations to Te Waiū-o-te Ika and Te Awa Tepua/Te Kōpuka shaped the decision must also recognise their duty to open dialogue and honesty. If those obligations were central to the Whanganui preference, they should have featured prominently in community discussions and council debate, not retroactively as justification for a decision that will cost some residents up to \$1000 more for water.

If Mātauranga Māori is to be integrated meaningfully into our governance, it must be done in a way that avoids division and brings people along through transparency, integrity, and authentic engagement.

John Chapman

The GOB party?

- Prior to the last election, the promises of

the so-called "Association of Consumers and Taxpayers" were prominently displayed around our district.

"ACT — Freedom to Speak." 12,000 New Zealanders died for this freedom in WW2. But when 150,000 submitted objections to ACT's dystopian Regulatory Standards Bill, and 16,000 asked to be heard, only 360 were allowed to speak, and no ACT MP turned up to listen.

"ACT — One Law for All." By law, our universities play the role of the "critic and conscience of society." Similarly, it is the duty of government ministers to uphold this academic freedom so that university professors can fulfil their role. But when several of those academics did the job that we taxpayers fund them for, and commented on the dangers of ACT's "big beautiful" Regulatory Standards Bill, they suffered a Trumpian campaign of personal intimidation by The Right Honourable (?) David Seymour to muzzle further academic free speech. Does he think that our law does not apply to himself?

"ACT — No Division by Race." We are all well aware of past racial divisions. Because of land theft by former colonial governments, the Māori 15% of our population are still suffering inequalities in health, justice, education and housing. I thought ACT intended to have Māori life expectancy raised seven years to the Pakeha age, the sudden unexpected infant deaths of Māori babies reduced from 60% of all SUDI to 15%, Māori similarly reduced from 52% of those in jail, and Māori university graduations raised from only 7%.

ACT MPs could have initiated this by using Māori taxpayers' money to build more affordable housing for the most deprived Māori families. Instead, we have observed ACT members attacking Māori in Orwellian attempts to divide our unique multicultural nation, while diverting hard-earned money of iwi taxpayers to the megarich 0.1%.

ACT could more truthfully name themselves GOB — the Gang of Oligarchs' Bullies. Can a political party be taken to court for false advertising? Or breach of contract?

John Archer

Waimarino graduate

Sam Lyon has completed his Agricultural Science Degree "with a big smile", advise his proud parents Rachel and Jim. After four years at Massey University, he says he is grateful to have met life-long friends there. At Massey, he played rugby for the University, Manawātū Under 19s, Manawātū Academy and the Hurricanes Under 20s. Sam returned home to Raetihi and has been working full-time on the family farm until he leaves for Vancouver, Canada in August to pick up a position playing rugby. Former Ruapehu College 2020 head boy and Ohakune Primary School pupil, Sam says he is grateful to the many people who have helped him throughout his journey.



Army gift

From Page 3

cording to Bill.

"We're very grateful to Les and all the team at the Hospice Shop in Kerikeri for spotting this important document and recognising the significance of the information and story behind it," he says.

"We have managed to find out some information about Hugh — that he served in the RNZAF during World War II, though probably not overseas; that he was married with two children and that he died in 1980. If anybody has any additional information about Hugh Purdie, his family, or his notebook we'd love to hear from them."

Editor's note: Ohakune's water treatment plant, built in the 1980s, uses UV light as one of the disinfectant processes — an uncommon practice for town supplies at the time. Ohakune Borough councillor Ben Goddard campaigned for several years to see the use of UV adopted.

THE WEEKLY WORKOUT

answers for each puzzle are included on this page

811

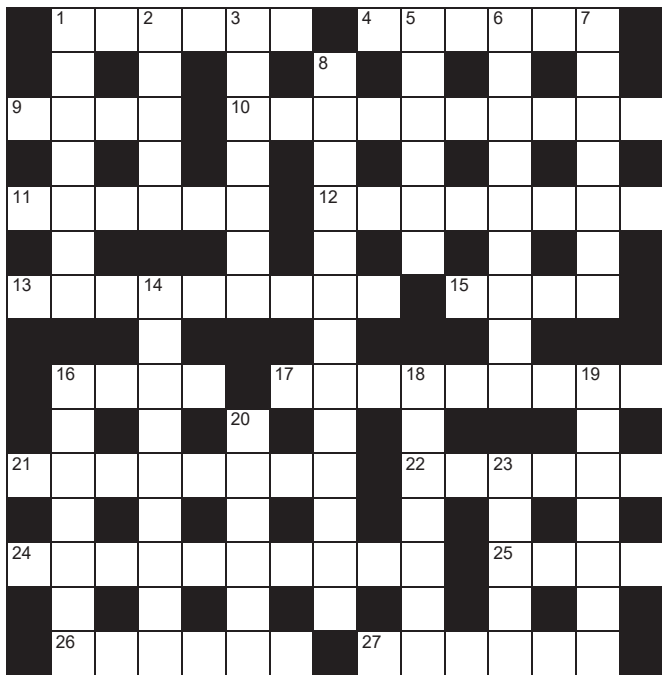
QUICK CROSSWORD

Across

1. Sibling (6)
4. Necessities (6)
9. Bundle of hay (4)
10. Without help (10)
11. Reddish brown (6)
12. Unnecessary (8)
13. Stone fruit (9)
15. Epoch (4)
16. Assist in a crime (4)
17. Deserted settlement (5,4)
21. Hold back (8)
22. Mollycoddle (6)
24. Container (10)
25. Exclamation (4)
26. Irony or sarcasm (6)
27. Population count (6)

Down

1. Height (7)
2. Distorts (5)
3. Line around Earth (7)
5. Respond (6)
6. Bankrupt (9)
7. Relative by marriage (7)
8. Bothersome person (4,2,3,4)



14. Medical care (9)
16. Eternal (7)
18. Hide (7)
19. When in fact (7)
20. Between trot and gallop (6)
23. Swindles (5)



Puzzles © The Puzzle Company

SUDOKU

Fill the grid so every row, column and every 3x3 box contains 1-9

	6		1			5		3
1	5	7			2	9		
3				8	5	7	6	
2			3		8	6	7	
		3		1		2		
	8	6	2		4			5
	2	1	9	4				7
		5	8			4	1	2
4	8			1		9		

1

EASY 2

MEDIUM

		1				8	2	5
5	4			9			6	
		3		8				
8	1							
2		9	8		4	5		7
							8	9
				1		4		
	7			4			3	8
4	8	2				7		

The Top 10

1. Who is the adopted brother of Thor, the God of Thunder?
2. What is the Italian dish polenta made of?
3. There is Nothin' Like a Dame is a song from which 1949 musical?
4. What word is commonly used for the shape known as a rhombus?
5. How many different Roman numerals are there?
6. Who is the other surviving member of the Rolling Stones along with Mick Jagger and Keith Richards?
7. Which Scandinavian country remained neutral during World War 2 and wasn't attacked by Germany?
8. In what sport are Blocking, Tripping, Holding, and Charging all counted as fouls?
9. If something is done precipitately is it an over-reaction, done hastily, or poorly?
10. What does SPF stand for?

CROSSWORD

Secrete, 19. Whereas, 20. Canter, 23. Scams. the neck, 14. Treatment, 16. Ageless, 18. Answer, 6. Insolvent, 7. Stepson, 8. Pain in Down: 1. Stature, 2. Skews, 3. Equator, 5. Receptacle, 25. Ahem, 26. Sature, 27. Census. town, 21. Restrain, 22. Cosset, 24. 13. Nectarine, 15. Aeon, 16. Abet, 17. Ghost. 10. Unassisted, 11. Russet, 12. Needless.

SUDOKU

		1						2
6	9	3	2	1	7	8	4	5
4	7	5	8	3	6	9	2	1
1	8	6	9	4	2	3	5	7
3	5	7	1	8	4	5	2	6
9	4	6	7	1	2	8	3	5
2	6	8	3	4	5	1	7	9
8	1	9	3	6	2	5	7	4
5	2	7	4	8	9	6	3	1
7	9	1	4	6	3	8	2	5

RUAPEHU BULLETIN 23 July 2025 • 5

RUAPEHU SNOW BULLETIN

Priceless
newspaper!
Winter
2025

*Your
guide to
winter at
Ruapehu*

Diego Chapman Mora enjoys his first ski for 2025, on the first weekend of the Whakapapa season, and the first weekend of skiing for the new owners of the field, Whakapapa Holdings Limited. The Company gave away free ski passes for Happy Valley on their opening days.

BAYLEYS
ALL OVER
RUAPEHU
PICK UP YOUR COPY TODAY!

**AVAILABLE THROUGHOUT
THE RUAPEHU DISTRICT**

Power staff solar excess gifted to those in need

Staff at a local power company are turning sunshine into support for whānau across its network, thanks to its initiative that’s helping ease energy hardship in the community.

Through TLC’s staff solar programme, solar panels are installed on employee homes at cost, with staff repaying the cost over three years. During the payback period, the money staff earn from selling excess solar power back into the grid is gifted to households finding it hard to pay their electricity bills.

Beyond the three-year payback period, staff can continue to gift their excess solar energy voluntarily to people who are struggling with power bills.

TLC staff, working alongside the Maru Energy Trust, nominate people in the community who could benefit from the credits.

“The response is always heartfelt and humbling: 28 nominations with 25 selected, with stories ranging from solo parents and elderly couples to caregivers supporting family members with serious health conditions,” says future energy general manager, Kyle Barnes.

Barnes said this year, the nominations shared by staff were deeply moving. One recipient is an elderly caregiver supporting a partner with Alzheimer’s in a home without insulation. Another is a solo dad raising two young children after the sudden loss of his wife. Others include grandparents caring for mokopuna, families living with chronic health conditions, and single parents juggling work, study and grief.

“This initiative reflects TLC’s pou of ‘Making a Difference’ — showing genuine concern for our community and customers,” said Barnes.

“It’s about more than delivering power;



Maru Energy Trust helps people insulate homes for free, making where warmer, drier and healthier. With close to 1000 homes insulated since inception across the network, Maru is helping bring a little warmth to Ruapehu's cold winters. Pictured is Maru client Ken Mahu of Kakahi who has been living in a warm, dry home since his home was insulated in June 2022.

Grants awarded to region's projects

This region’s council has award funding to 39 community projects through the 2025 Kanorau Koiora Taketake – Indigenous Biodiversity Community Grant and the Pūtea Hapori Urupare Āhuarangi – Community Climate Response Fund.

Horizons councillor and Kanorau Koiora Taketake – Indigenous Biodiversity Community Grant committee member Fiona Gordon says improving the region’s precious indigenous biodiversity is no small task.

“It involves clearing invasive weeds, planting native species, restoring wetlands, and trapping pest animals.

“These projects are complex, require teamwork, and often demand long-term commitment and investment.

“This grant helps communities get projects off the ground or sustain progress they have already made.

“We’re deeply grateful to all those working hard in our community to protect and restore our region’s precious indigenous biodiversity,” says Cr Gordon.

The total funding allocated to both grants this year was \$422,000 and includes funding allocation for eight multi-year projects from previous years.

This year local communities across the region will benefit, with seven projects from each of Ruapehu and Whanganui, four from each of Taranaki and Rangitikei, three from Palmerston North, nine from Horowhenua, four from Manawātū, one from Waitomo, and one project covering three regions.

Horizons councillor and Pūtea Hapori Urupare Āhuarangi fund committee chair Nikki Riley says it is fantastic to be able to support community projects, which are making a real difference for climate change.

“We’re excited to see how these initiatives strengthen our communities as they build resilience to climate changes,” says Cr Riley.

The successful Ruapehu projects are: Kirikau Valley Community Trapping; Matiere Catchment Group – Matiere Trap bank; Ngāti Te Maunga Whenuakura - Te Taurima i Nga Mātāpono Tiaki mō Whenuakura Pest Animal Control; Otiranui Guardians – Trapping expansion programme phase two; Owahango Alive Society Incorporated – Whakapapa Whio Protection Project; Project Tongariro Mangawhero River Track Restoration (Ohakune); Raetihi School – Outdoor classroom development.

For more information on these projects, visit the Horizons Facebook page where projects are regularly featured.

The next round of applications for the Kanorau Koiora Taketake – Indigenous Biodiversity Community Grant will open in March 2026. For more information about what grants Horizons has available to community groups, see horizons.govt.nz/grants-and-sponsorships.



Ohakune's Mangawhero River Track weed control and native replanting project is one of 39 projects that have been granted Horizons funds.

it’s about delivering compassion, connection and care.”

Barnes said the stories reflect the reality of energy hardship in its communities — and the power of small acts of kindness to make a real difference.

The two \$75 credits are applied directly to recipients’ power bills in July and August.

“We know winter is the time of year where many in our community struggle the most with energy costs, so we offer this tangible relief during these colder months,” continued Barnes.

The programme was co-ordinated by Hannah McKinlay, future energy project, with support from Maru team leader, Renee Parkes, who helped identify households in need. Together, they ensured the credits were distributed fairly and sensitively.

This is one of several outreach efforts that support TLC’s strategic goal of delivering tangible value to people connected to our network.

What do you want for the future of Ruapehu?

Hi I'm Lyn Neeson.
I'm asking for your vote for Mayor of Ruapehu District in the upcoming elections.

My vision is built on:

Inclusive Leadership

Where everyone around the council table is valued and empowered to engage meaningfully with the community.

Financial Accountability

I've long campaigned for concentrating on core infrastructure and managing the basics right. That \$700,000 out of budget overspend wouldn't have happened on my watch. I'm acutely aware that the rate burden impacts all sectors.

Economic Diversity

Supporting all sectors of society to thrive, from small businesses, to tourism and farming . We are a diverse district and we all need to be supported.

VOTE

Lyn Neeson

MAYOR FOR RUAPEHU

Authorised by Lyn Neeson alyn@xtra.co.nz

RUAPEHU BULLETIN 23 July 2025 • 7

ADVERTORIAL

Trusted experts backed by experience and innovation

Since 1996, AP Plumbing & Gasfitting Ltd has been delivering “smart, reliable solutions” across the Whanganui and Central Plateau regions. What began as a locally owned and operated business has grown into a nationwide operation, with projects spanning from the Chatham Islands to the heart of Wellington.

At the helm is founder Andrew Palmer, a certifying plumber, gasfitter and drainlayer with more than 30 years of experience. His hands-on approach and commitment to excellence have shaped AP Plumbing’s strong reputation within the industry. That reputation is built on a simple promise: to get the job done right, no matter the size or scale.

From residential maintenance to complex commercial, industrial, and civil projects, the team at A.P. Plumbing brings technical know-how, attention to detail, and a forward-thinking mindset to every job.

Andrew’s leadership goes beyond the business. He has served as President of the New Zealand Master Plumbers Association and continues to mentor the next generation of tradies. Training and development are central to the company’s values, with a strong focus on employing and supporting apprentices throughout their careers.

AP Plumbing’s story includes notable milestones, such as contributing to the Christchurch rebuild in the aftermath of the earthquakes, and completing major commercial builds across Aotearoa. These include: BP service station developments nationwide; Prison facilities in Turangi and Whanganui; The award-winning Rydges Hotel at Wellington International Airport; The New Zealand International Commercial Pilots Academy.

The company has earned recognition for its high standards in health and safety, but more importantly, it has earned the ongoing trust of clients across the country.

Whether you’re based in Ruapehu, the wider Central North Island, or beyond, AP Plumbing & Gasfitting offers a proven track record of quality, integrity, and innovation.



Hamish Palmer from AP Plumbing.

Earthworks

HAITANA EARTHWORKS



14 tonne digger
14 tonne wheel digger
Tip truck
Supply of metal, scoria and boulders

Farm work, section & driveways, rock walls

Ph 027 289 4404

Plumber



Plumbing, Drainage, Gas & Building

Looking for a dependable local plumber in your area?

Count on our skilful local Ohakune plumber for all your maintenance plumbing requirements. Whether it's a leaking pipe or a blocked drain, we deliver quality service with fair pricing in the Ohakune & surrounding areas.

Don't hesitate, get in touch with us today!
office@plumberdan.co.nz

Ph 021 635 517

Auto Services



RUAPEHU MOTORS

Locally owned and operated by mechanic Daniel Norris.

WOF \$75 car, \$45 trailer

Ruapehu Motors

Cnr Seddon St and Valley Rd, Raetihi.

For enquiries, please phone Daniel

Ph 027 863 7454

Hire

Why buy it ... hire it!
TWEEDDALE HIRE

NEW LOCATION
Next to BP Ohakune

Open Monday – Friday 8am – 4pm
Saturday 9am – 12pm. Sunday CLOSED
P 027 2799 724 E ohakunehire@xtra.co.nz

CHECK OUT OUR EXTENSIVE RANGE OF HIRE EQUIPMENT. SEE OUR WEBSITE
WWW.TWEEDDALE.CO.NZ



PARTY HIRE: floodlights, tables & chairs, heaters, spit roasters, wheelie bins, chafing dishes, crockery & cutlery, dehumidifier, flute & wine glasses, universal food cooker, portaloos & showers, 3-section marquee, horse float.

Marquee Hire



FOR THE BIG JOBS: digger hire, cherry pickers, pumps, wood splitters, generators, car trailers, post hole borers, furniture trailer, concrete equipment, rollers & compactors, portable trencher



Ph 06 387 5022

Heat Pumps

Choose the best heat pump designed to heat your home

Call us for a service and clean of your heat pump



Free quotes. Interest Free Terms available.
Total 5-year Warranty. Q Card. ohakunetv@xtra.co.nz

Ohakune TV Electrical

Ph 06 385 8700

Property Maintenance / Cleaning



RUAPEHU COMMERCIAL CLEANING & PROPERTY MAINTENANCE LTD
Commercial | Residential Property Cleaning | Maintenance

- General Cleaning
- Property Maintenance
- Carpet Cleaning
- Water Blasting Services
- Floor polishing/buffing

For a free no obligation quote call:
RAY 021 886 509 or MAURICE 021 078 2419
Or visit: www.rccpml.co.nz

021 886509 or 021 0782419

Building Supplies

PlaceMakers®

FOR YOUR BUILDING PROJECT & DIY NEEDS

MON to FRI – 7.30am – 5pm
SAT 9am – midday

Ph 06-385 8414

Curtains & Blinds



CURLS
curtains&blinds

FREE MEASURE & QUOTE

Custom Quality Curtains, Blinds, Shutters & Steel Kit Set Frames

curlscnb@gmail.com

Find us on facebook
@curlscurtainsandblinds

Ph 022 307 2627

Upholsterers



- Furniture Upholstery
- Vehicle Upholstery
- Tarpaulins • Canvas & Leather
- Shade sails • Saddlery

Factory, SH49, Tangiwai, Ohakune.
Mobile 0274-467-289 Fax 06-385-8483
email: westlorne@xtra.co.nz
www.westlorne.co.nz

Ph 06 385 8487

Plumbing / Drainlaying

B&M PLUMBING LTD

- Plumbing & Drainlaying
- Pumps - sales, servicing & installation of all pumps
- Fires & Solar
- 5 Ton Digger with Augers, Ditchwitch & Tip Truck

“Your local Registered Certifier”



Call Brian 027 436 1075

Email:

bmfred@xtra.co.nz

Ph 06 385 4718



Ohakune Landscape Supplies

- Huge range of Pebbles
- Builders mix
- Mulch
- Sand
- White chip
- Bark
- Topsoil
- Pavers
- Pea Straw
- Bagged Garden Fertilisers
- Rail & Mac Sleepers



~ Call to arrange supply ~ FREE loan trailer ~
~ eftpos available ~

Email: Ohakune.landscape@gmail.com

Ph 0800 926 315

\$200K in freshwater projects fund announced

Applications are now open for regional freshwater community grants from the regional council, Horizons Manawātū-Whanganui.

Funding is available to community groups with projects which encourage engagement with freshwater, education around water quality issues, or projects that involve interventions to improve water quality. There is \$200,000 available through the fund for the new financial year.

Horizons chair Rachel Keedwell says improving freshwater quality is one of Horizons' priority areas.

"Our vision for this grant is to support community groups in developing projects that foster education, engagement, and innovation in freshwater quality.

"When working alongside communities, we often hear a wide range of ideas from people who are deeply connected to our waterways. Yet, a common challenge that many face is the lack of funding, which can stall progress and limit potential.

"Offering financial support through a contestable fund is a great way to help local groups to bring their ideas to

life and create a positive impact in their communities," says Cr Keedwell.

Some of the initiatives supported by the Regional Freshwater Community Grants last year included: freshwater sampling equipment for science students at Ruapehu College; community education about watershed dynamics in Whanganui; fencing of wetlands in Rangitikei; plastic pollution collection in waterways in Palmerston North; a project to reduce single use plastics in a school environment in the Manawātū; and riparian planting and pest control projects in Manawātū, Palmerston North, Tararua and Horowhenua.

Applications for this year's grant opened on Monday 14 July and close on Friday 29 August at 4pm. Applications are welcome from across the region

Successful applicants will be notified by the 3 October 2025. To be eligible for funding, projects will need to be completed by 30 June 2026.

Detail on eligibility criteria is at <https://www.horizons.govt.nz/about-our-region-and-council/grants-and-sponsorship/freshwater-community-grant>.



Riparian planting – one of the types of activities supported by the regional council through its grants process.

Samuel Fletcher: from trolley boy to supermarket owner

A 17-year career in the grocery business has led to Samuel Fletcher finally taking on his own store in June – Ohakune New World supermarket.

He started his career just up the road at Tūrangi as a part-time trolley boy, moving up through the ranks to full-time, then grocery supervisor, deputy manager, chilled foods manager, store manager, operations manager and now proprietor.

He has worked at Tūrangi New World, Pak n Save in Taupō, Tokoroa New World and Morrinsville New World.

"I am really excited to be taking the reins of an awesome store, working with an amazing team in this great community," says Samuel.

"I want to thank Rama and Jenna for their hard work in our store and helping the transition be as smooth as possible. We wish them the best in their next store in Auckland.

"Please come and catch up if you see me in store, I look forward to meeting everyone."

We asked Samuel a few questions about his life change:

It's a big difference from being an employee to a business owner – how does that feel now that you've been in charge for a month or so?

It definitely changes things when you are the owner of the store but we have a strong team with

great depth which takes the pressure off.

Can you tell us about the process involved to take over a New World supermarket?

I was nominated by the owner of Taupō Pak n Save Chris Grace and went through a testing and selection process to make it onto the ownership programme. I applied to purchase NW Ohakune when it came onto the market. Most of my family lives in Taupō or Tūrangi so its great being close to home.

You mentioned you're a first-generation grocer – what work did your parents do and did that have anything to do with your choice of career? Why did you choose working in grocery?

My dad was a painter and mum is a school teacher. Dad always said do what makes you happy and I really enjoyed working in a team and community back in Tūrangi so I stuck with it. Foodstuffs offers lots of training and support which has helped me get where I am today.

This area has had some serious setbacks in recent years – what gives you confidence that things will turn around and that the business will flourish?

When I was doing my homework on the area I felt this positive energy and drive from the locals and that plays a huge part when tackling these challenges that come up for the region. With tour-

ism numbers increasing, both ski fields trading and new activities being opened we have to keep providing those awesome experiences for visitors to the region and hopefully we see them return for more!

You seem to be pretty enthusiastic, with lots of changes planned for the supermarket. Can you give us some info on what you have planned and why?

A lot of my changes are focused around increased shelf weight, so we are moving some categories to do so. This will give us more space to add new products where needed. I'm also working on sourcing more locally and will have some news around this coming up.

Outside work – do you have other interests or is the supermarket your whole world? Do you ski/mountain bike/fish/hunt/tramp/golf/ etc?

New hobbies are golf, mountain biking and would like to get some hikes also once we get through winter.

Anything else you'd like the community to know about you and/or the supermarket?

It's an honour to be serving Ohakune and surrounding region and I am look forward

to meeting everyone instore.



Samuel Fletcher, believes in this area so much he bought the supermarket.



Experts ~ at your service

Electrician

Are you looking for an electrician who:

- Turns up on time?
- Keeps his promises?
- Offers efficient service & sound advice?

Then call Jake Fah at



Mountain Electrical
REGISTERED ELECTRICIAN
Ohakune – Raetihi – Rangataua – Horopito – National Park – Whanganui

Ph 021 770 123



Note:
Call Jude to book this space for next week.
Only costs ~~\$34.87~~ ^{\$34.87} GST each week for 50 weeks, in colour!
Other options available.
p: 06-385-8532
e: ads@ruapehubulletin.co.nz

Engineering



- Manufacturing and repairs
- Access equipment hire
- Engineering supplies
- BOC gases
- 20T & 50T crane hire

29 Burns St, Ohakune.
027 473 0188 Mark or 027 444 2058 Bruce
Email: sales@ohakune-eng.co.nz

Ph 06 385 8952

Gas Fitting



Cut down on your power bill. Go gas hot water & heating – supplied and installed. Call for a consultation.

Phone Denise 027 482 7488 or Email
accounts@applumbingandgas.co.nz

Ph 06 343 6866

Tree & Garden Services



Treeshape Ltd
Tree & Garden Management

Garden maintenance & landscaping
Tree care and removal
Landscape design and installation

Over two decades of experience in commercial and private tree & garden management

Fully qualified and insured

Contact us today for a free consultation or estimate – email treeshapeltd@gmail.com

Ph 021 951 962

Auto Services

AUTO SERVICE CENTRE



Authorised Holden Service Centre

Full workshop services for all vehicles, wheel alignments, computer diagnostics, warrant of fitness inspections, parts, batteries, engine oils.



84 Clyde Street, Ohakune
After hours 027 448 4080
autoservicecentre@hotmail.co.nz

Ph 06 385 9222

Land development

VERSATILE BOBCATS LTD



Bobcat+Truck Hire
Section clearing
Driveways Formed

For All Your Land Development Requirements

Topsoil available

Contact Steve Gray **Free Quotes**

Ph 027 685 4854

Carpet Cleaning



WANGANUI
CARPET & UPHOLSTERY CLEANING
24 HOUR FLOOD CALLOUT

We specialise in stains, odours and hard to clean carpets and fabrics.
P.U.R.T - Pet Urine Removal Treatment
cdwanganui@outlook.co.nz
www.chemdry.co.nz
Wanganui & Ruapehu Regions

0800 22 78 22

RUAPEHU BULLETIN 23 July 2025 • 9

ACCOMMODATION WANTED

HOUSE/COTTAGE REQUIRED

Retired older woman with pets/dogs/cats requires older house or cottage in the country or semi country, any area considered, if you can help me and my animals out, I have verbal references. Long term preferred. Contact me on 021 0901 8823.

FOR SALE

FIREWOOD 4 SALE. Mixed blend of gum, pine with native. \$125 per cube, 1 to 2 cube trailer load per order. Free delivery Ohakune/Raetihi, Txt/Call Jock 0273 602 700.

GARAGE DOORS, all types of garage doors, specialising in sectional garage doors and auto openers. For a free quote ring Alex Ferrier Building Services Ltd on 07-895-5890.

WATER TROUGHS, cattle or sheep. Different sizes. Delivered price quoted. Ph 0800-487-633.

BUSINESS NOTICES

Appliance Testing & Tagging

Keep your gear safe & compliant.

Call Kevin
027 439 5297



PUBLIC NOTICES

Lyn Neeson for Mayor
Inclusive Leadership
Financial Accountability
Economic Diversity
Please phone if you want a chat
07 896 7659
Authorised by Lyn Neeson

Deadline for all advertising bookings and copy is 5pm Fridays!

It's important that we get your ad booking and copy in on time, so that we have time to check it, plan the best layout and work on producing a better paper for you!

BUSINESS NOTICES

**Ohakune Health Hub
In pain? Let us help.**

Experienced care in Osteopathy, Physiotherapy, Massage and Acupuncture – effective treatment for:
- Musculoskeletal pain - headaches & concussion - post-operative recovery - and much more.

ACC registered | 77–79 Clyde St, Ohakune
Book online: www.ohakuneosteo.co.nz

Bennett's Tank Cleaning Services

Septic tanks, water tanks, grease traps.
Call us for fast efficient service.
Phone Chris on 06-388-0452.

Ruapehu Mayor Weston Kirton
To arrange a meeting or call back, please phone Council on 06 385 8364 or email: kay.kidd@ruapehudc.govt.nz

PUBLIC NOTICES



Ohakune Community Charitable Trust AGM

Monday 4 August, 6pm at the Matterhorn (upstairs at the Powderkeg)

Community Update

At 7pm with a chance to meet our project leaders and hear their project plans in 2025.

With guest speakers:
Jono Dean (Tūroa)
Rachel Hoskin (Whanganui & Partners)
Travis Donoghue (Whakapapa)
Lynley Twyman (Mountains to Sea)
Jo Kennedy (Visit Ruapehu & RDC isite)

Nibbles provided. All welcome.

RSVP for catering purposes to
Secretary.ohakunecct@gmail.com

PUBLIC NOTICES

Section 101, Sale and Supply of Alcohol Act 2012
Ohakune Food Barn Limited has made an application to the District Licensing Committee at Ruapehu District Council for a **New Off Licence** in respect of the premises situated at **12–14 Goldfinch Street, Ohakune** known as **New World Ohakune**. The general nature of the business to be conducted under the licence is that of a **Supermarket**. The days on which and the hours during which alcohol is intended to be sold under the licence are: **Monday – Sunday: 7.00am – 9.00pm**. The application may be inspected during ordinary office hours at the office of the Ruapehu District Licensing Committee at Ruapehu District Council, 59–63 Huia Street, Taumarunui.

Any person who is entitled to object and who wishes to object to the issue of the licence may, not later than 25 working days after the date of the publication of this notice, file a notice in writing of the objection with the Secretary of the District Licensing Committee at Ruapehu District Council, Private Bag 1001, Taumarunui 3946. No objections to the issue of a licence may be made in relation to a matter other than a matter specified in section 105(1) of the Sale and Supply of Alcohol Act 2012. This is the second publication of this notice. The first notice was published on 16 July 2025.

PUBLIC NOTICES

MEETINGS

The following meeting of Horizons Regional Council (Livestreamed) will be held in the Tararua Room, Regional House, 11-15 Victoria Avenue, Palmerston North:

Tuesday, 29 July

9.30am Regional Council

Should Members of the public wish to speak at Meetings, they are advised to phone 0508 800 800.

M J McCartney
CHIEF EXECUTIVE



**Annual Report 2023-24
Notice of correction**

Ruapehu District Council would like to acknowledge an error published in our Annual Report 2023-24. The error related to the Levels of Service survey results for the Leadership function of Council, for the period of July 1 2023 to June 30 2024.

The statistic for the 'Percentage of respondents who are satisfied with Council's overall leadership and performance' was incorrectly reported as 73.81%, when the actual figure was 46.19% (page 120). The significance of this error is that Council did not achieve its target of at least 60% satisfaction with this function.

The incorrect statistic was the result of an administrative error during the processing of the Levels of Service survey results. Council accepts full responsibility for the mistake and would like to acknowledge the community member who brought it to our attention.

We have worked with the Office of the Ombudsman to rectify this mistake and to take appropriate actions.

This acknowledgement will be published for reference alongside the Annual Report 2023-24 on Council's website.

Quentin Speers
Executive Manager
Finance, Strategy and Governance



**Ruapehu District Council
Te Kaunihera-ā-Rohe o Ruapehu
Boards and Committees
UPCOMING MEETING DATES**



Agendas are published on our 'Meetings this Month' page (ruapehudc.govt.nz) two working days before each scheduled meeting.
To speak at our Public Forum and share your thoughts directly with Elected Members, please contact our Governance team at governance@ruapehudc.govt.nz.

Ōwhango-National Park Community Board
6:30PM, Tuesday 5 August 2025
The Park Hotel, 2/6 Millar Street, Ruapehu, Waimarino

Taumarunui-Ōhura Community Board
6PM, Thursday 14 August 2025
Council Chambers, Huia Street, Taumarunui

Waimarino-Waiouru Community Board
6PM, Thursday 21 August 2025
Council Chambers, Ayr Street, Ohakune

MEETING CONTACTS
Ruapehu District Council 07 895 8188
Taumarunui-Ōhura Community Board
Luke Pepper, Chairperson 027 329 2849
Ōwhango-National Park Community Board
Anthony Gurr, Chairperson 021 487 742
Waimarino-Waiouru Community Board
John (Luigi) Hotter, Chairperson 027 274 2616
Risk & Assurance Committee
Philip Jones, Chairperson 027 499 9408

PUBLIC NOTICES

**Rangataua Hall
Committee
AGM**

Tuesday 5 August at 6:30pm
At the Hall.

All welcome.



**Te Kōhanga Reo
o Mo Te Whanau
Notice of AGM**

whanau@k07i053.kohanga.ac.nz

Monday 4 August 2025 – 4pm
at 32 Queen Street, Raetihi

Agenda:

Previous Minutes
2024 Audit Report
Chairperson Report

Elections of Officers:

Chairperson
Secretary
Treasurer
Signatories
Auditors

Naumai Haere Mai



**School Board Elections
Parent Election Notice**

Nominations are open for the election of five parent representatives to the school board. All eligible voters will receive a nomination form. Use this form to nominate yourself or someone in your community. You will also receive a nomination cover letter calling for nominations. Information on who is not eligible to be a board member is provided with this notice, and the nomination form.

If you need more nomination forms, contact the school office.

Nominations close at noon on **Wednesday 6 August 2025**. You may provide a signed candidate statement and photograph with your nomination.

The electoral roll is held at the school and can be viewed during normal school hours.

As nominations are received, there will be a list of candidates' names kept at the school up until election day, which you can view.

Voting closes at 4pm on Wednesday 10 September 2025.

Donna Summerhays
Returning Officer

**www.
ohakune.info**

Region celebrates Biosecurity Week: hosts conference

The Regional Council will welcome delegates to the country’s largest biosecurity conference to the region today (23 July).

The conference forms part of a week-long celebration of the work done to protect the environment against harmful threats which can damage the economy, rare habitats, and our wellbeing.

Horizons biodiversity, biosecurity and partnerships manager Craig Davey says the NETS2025 Conference will take place 23-25 July in Palmerston North in the middle of the nationally celebrated Biosecurity Week.

“The theme for NETS2025 is Haumaru koiora kia pai āmua – Biosecurity for a better future,” says Davey.

“Biosecurity work provides many benefits in the Horizons Region. It protects productive primary industries such

as agriculture and forestry from the impact of pests and diseases, safeguarding key pillars of our regional economy.

“Research from University of Auckland shows invasive species cost more than \$100 million annually in damages to economic sectors. Biosecurity work – be it trapping possums or controlling Old Man’s Beard – helps to limit and reduce this impact.”

Tackling pest plants and animals already in the Horizons Region, and working to keep others out, also helps to retain the region’s most rare and threatened ecosystem types, says Davey.

“Some of these ecosystems are the last 1% of their type remaining and are home to plant and animal species listed as nationally critical.”

People’s wellbeing is intrinsically tied to the state of the environment, so protecting it through biosecurity work helps to maintain and enhance personal wellbeing, says Davey.

“No matter why people value the environment – for the food it provides, the space for wildlife, cultural connection, or otherwise – biosecurity work plays a part.”

Additional funding granted through Horizons’ 2024-34 Long-term Plan will help staff to deliver enhanced biosecurity work in coming years, Davey says.

“We will be expanding our bait station network into at least four new areas throughout the region, enabling us to do more possum control and target this key carrier of bovine tuberculosis.

“These new areas will be in addition to the 1.6 million hectares we already cover with 210,000 bait stations. Typically, our index score for possum control is 2-3% - well below the target of 10% - and shows our efforts are making a difference.

“Additional funding will also enable us to do more work to exclude ungulates (deer and goats) from rare and threatened ecosystems, helping to preserve these special areas for generations to come.

“Furthermore, we will be putting more work into controlling Old Man’s Beard, pest conifers, and other pest plant species which can be just as destructive to environments as pest animals.”

Biosecurity Week is also an opportunity acknowledge everyone working to combat pest plants and animals, says Davey.

“Landowners, farmers, urban trappers, community groups, freshwater advocates and more are also doing the hard yards,

sometimes in conjunction with us. They too should take time this week to reflect on the biosecurity wins they have achieved.

“All this mahi carries the goal of making our region a healthy environment where people thrive, both now and into the future.”

To learn more about biosecurity work in the Horizons Region, see <https://www.horizons.govt.nz/managing-natural-resources/plant-animal-pests>.

SITUATIONS VACANT

GOVERNANCE MANAGER

RUAPEHU DISTRICT – OHAKUNE/RAETIHI/TAUMARUNUI

Who are we?

Ruapehu District Council is dedicated to creating safe, prosperous rural communities that thrive all while sustaining our beautiful environment. We are an inclusive organisation guided by our mission to improve the well-being and quality of life for our communities.

About the role

As Governance Manager you will lead the governance function across Council, supporting elected members, ensuring high-quality decision-making processes and maintaining the integrity of local democratic systems.

You'll manage end-to-end delivery of key governance services including meeting logistics, agendas and minutes, support to Chairs, responses to LGOIMA and privacy requests, Representation Reviews, and the ongoing review of foundational documents like the Standing Orders and Code of Conduct.

You'll also be Council's Deputy Electoral Officer, managing election processes, elected member induction and development, and ceremonial events. Beyond this, you'll lead the continual refinement of systems, templates, and workflows to keep pace with best practice and legislative compliance.

This is a hands-on leadership role where strong process thinking, a proactive approach, and great relationship skills are essential.

Who we are looking for

- Strong governance experience, ideally within local government, and a solid understanding of relevant legislation (LGA 2002, LGOIMA).
- Proven ability to work with elected members and senior leaders in a politically aware and professional manner.
- Excellent communication and writing skills, with a high level of attention to detail and accuracy.
- Strong organisational and process improvement skills, with confidence using digital platforms and council systems.
- Leadership experience or potential - we're open to someone stepping up into their first formal leadership role.

What we offer

At Ruapehu District Council, we provide:

- A flexible working environment that supports work-life balance.
- Competitive remuneration and learning opportunities.
- A chance to join a team of passionate staff working to make a real difference.

Experience Ruapehu's lifestyle

Located in the heart of the North Island, the Ruapehu region offers world-class outdoor experiences like the Tongariro Alpine Crossing, Whanganui Journey, and the iconic Bridge to Nowhere. For cycling enthusiasts, Ruapehu is a premier destination featuring two of New Zealand's Great Rides, the Timber Trail and the Mountains to Sea journey Ngā Ara Tūhono, alongside an extensive network of mountain bike trails. In the winter months, enjoy snow filled adventures on New Zealand's largest ski areas, marvel at alpine vistas from the Sky Waka gondola, or simply cosy up in the highest café in the country.

How to apply

To apply, please visit <https://www.ruapehudc.govt.nz/our-council/employment/current-vacancies>.

Applications will remain open until a suitable is appointed. Applications will be reviewed on a rolling basis.

PUBLIC NOTICES

Raetihi Y Ahu Whenua Trust

ANNUAL GENERAL MEETING

The Annual General Meeting of Raetihi Y Ahu Whenua Trust and presentation of the Annual Report for the period 1 April 2024 to 31 March 2025 will be held on:

Saturday 9 August 2025, 10am (NZ time)
Raetihi Cosmopolitan Club, 32 Seddon St, Raetihi

AGENDA:

1. Karakia
2. Apologies
3. Presentation of Annual Report
4. Presentation of Financial reports
5. Matters Arising
 - Appointment of two replacement Trustees
 - 2Ha reserve for owner/beneficiaries
 - New Lease Agreement
 - Financial strategy - Dividends vs investment strategy
6. Karakia Whakamutunga

Any enquiries to:
Gordon Cribb - email: gtribb@gmail.com

PUBLIC NOTICES

Section 101, Sale and Supply of Alcohol Act 2012
Krishna 2017 Limited have made an application to the District Licensing Committee at Ruapehu District Council for the **Renewal of an On Licence** in respect of the premises situated at **66 Clyde Street, Ohakune** and known as **Ohakune Bar & Eatery**. The general nature of the business to be conducted under the licence is that of a **Tavern**. The days on which and the hours during which alcohol is intended to be sold under the licence are: **Monday to Sunday 8.00am – 12.00am**

The application may be inspected during ordinary office hours at the office of the Ruapehu District Licensing Committee at Ruapehu District Council, 59-63 Huia Street, Taumarunui.

Any person who is entitled to object and who wishes to object to the issue of the licence may, not later than 25 working days after the date of the publication of this notice, file a notice in writing of the objection with the Secretary of the District Licensing Committee at Ruapehu District Council, Private Bag 1001, Taumarunui 3946.

No objections to the renewal of a licence may be made in relation to a matter other than a matter specified in section 131 of the Sale and Supply of Alcohol Act 2012.

This is the first publication of this notice.



ABOVE: Darwin's barberry is one of the many pest plants the region has to deal with.
BELOW: Galls on Sydney golden wattle – a technique for dealing with the pest plant.



Council water decision effects start right now, says Kirton

The financial consequences of Council’s decision on water reform start immediately and are real, says mayor and mayoral candidate Weston Kirton.

“Ruapehu is now liable for a \$1.3 million payment for set up costs to support joining with just Whanganui City,” says Kirton.

“If Council had chosen to go with the larger grouping of four rural councils, which I supported, we would only be liable for \$300,000 in set up costs. That’s an additional \$1,000,000 due this year as a direct result of the decision made by Council.

“This money will have to come from either increased debt, or increased rates, or both. And this is just the start. The costs will keep coming, in their millions.

“I did not agree with this decision, but

as mayor it is my job to make the best of a bad situation. I take that job very seriously and I will give it 110% every day.

“However, I do feel obligated to ensure that the financial consequences of this decision are fully understood by the community. Especially given some of those who voted for the higher-cost option are now trying to downplay the cost impacts.”

He said this is a democracy and those who voted to increase water rates by an additional \$1000 per year were entitled to do so.

“But they also have a responsibility to be open and transparent with the community about the consequences of their decision – especially those who are at the same time campaigning on ‘financial accountability’.”

Ruapehu rugby wrap



Ruapehu forwards for Taihape, from left, Gabriel Hakaraia, Te Uhi Hakaraia, Jack Kinder and Roman Tutauha.

Four Ruapehu forwards playing premier rugby for By-fords Readimix Taihape contributed greatly to winning the Grand Final of the Tasman Tanning Premier Whanganui rugby competition on Saturday 12 July.

Trailing 14-6 at half time to Kaierau, the team made good decisions in the downpours and then the mud bath of Cooks Gardens, conditions, which suited a forward

pack who knew how to ruck and maul.

Prop and VC Gabriel Hakaraia flanker Jack Kinder and No 8 Kaleb Sweet fought for every inch and then were reinforced with hooker Roman Tutauha, prop Te Uhi Hakaraia and Jaye Flaws from the bench and who Whanganui Rugby writer Jared Smith termed the “bomb squad”. The team ground their way to a 15-14 win.

Win for Ohakune Squash E-Grade team

Last weekend teams travelled throughout the Central District to try and win district graded team titles. Best result came from the E grade men’s team who won their competition in New Plymouth. They will now contest the national E grade team’s title in Napier later in September.

“We beat Okato, Kawaroa Park, Inglewood and Whanganui,” says Simon Barlow.

“Every match went down to the wire with Ohakune winning every tie in the 5th and deciding game.”

Last week’s Ruapehu Zone interclub saw Ruapehu College beat Ohakune in the local derby 3/1. Taumarunui beat Turangi 3/1 at Turangi in the other fixture. With one week to go, Ruapehu College has a handy lead on 53, Taumarunui 45, Turangi 44 and Ohakune 27. In the final round this Wednesday, Ohakune hosts Turangi and Ruapehu College hosts Taumarunui. Taumarunui will likely need to win all four matches to overtake the College team. Games start at 6:30, visitors welcome.

Week five of interhouse on Thursday had the following

results: Head beat Salming 84/65, Tecnifibre beat Dunlop 96/69 and Karakal beat Prince 81/78. Unsquashable got 80 for the bye. Points to date are Tecnifibre 442, Unsquashable 416, Head 93, Dunlop 382, Prince 380, Karakal 369 and Salming 360. The draw for this Thursday is 5:00pm Dunlop vs Head, 6:30pm Salming vs Prince 8:00pm Unsquashable vs Karakal and Tecnifibre has the bye.

Beginner juniors

Also on Sunday several beginner juniors travelled to Turangi for their Prince series tournament. Best result came from Chase Haitana playing in his first away tournament, winning the fourth division. Both Casey Shields and Ocean Thomson are sitting in the top ten overall out of around a hundred competitors.

Entries were closed at 74 for the Catalyst Performance Agronomy B grade tournament to be hosted in Ohakune this weekend with competitors coming from throughout the North Island. Games will start 5pm Friday and run all day Saturday from 8am to 8pm.



Ohakune Squash Club's winning E-Grade Men's team in New Plymouth, from left, Conrad Smith, Mitchell Job, Simon Barlow, Sean Drinkwater and Sam Barlow. Photo: Kristin Thompson.

College drama students set to shine

Eye on Ruapehu College, contributed by staff and students

Ruapehu College has officially kicked off Term 3 – a critical stretch of the academic year, “filled with energy, creativity, and important milestones”, says principal Marama Allen.

Students shine in upcoming school production

Ruapehu College is taking to the stage this week with “a wildly entertaining” school production that’s equal parts hilarious and heartwarming.

Running from Wednesday 23 July to Saturday 26 July, students have been rehearsing diligently for the show, which features a series of dramatic and comedic vignettes that capture the weird, wonderful and all-too-familiar moments of school life. Adapted from the works of New Zealand playwright Lesley Brown, it’s packed with laughs and unforgettable characters. Directed by Dave Sims, the students have rehearsed with unstoppable energy and commitment, turning their passion into a performance that’s anything but ordinary.

“This show is a real celebration of student spirit,” said Sims.

“It’s been incredible to see them bring these characters to life with such humour and heart.”

Tickets are available via the advert in this issue where readers can scan the QR code, or go to <http://www.trybooking.com/nz/YJD>.

Rural health careers talk inspires future pathways

In the first week back, on Thursday 17 July, students had the opportunity to attend a special hour-long Rural Health Careers Promotion Programme. Led by tertiary students currently studying a variety of health professions including medicine, nursing, dentistry, paramedicine, midwifery, physiotherapy, and dietetics. The session offered an engaging and interactive insight into the world of rural health careers.

Year 9 students attended with their teachers, while selected Year 13 students with a passion for health-related careers were also invited to participate. Mentors encouraged any interested Year 11 and 12 students to attend as well.

“This workshop provided valuable firsthand exposure to the possibilities of

working in healthcare, especially in rural settings, and inspired many students to consider their future pathways in the health sector,” says Allen.

What’s ahead

Term 3 is shaping up to be rich with events and initiatives, says Allen. From inter-house competitions and sports fixtures to academic workshops. Students will have plenty of opportunities to engage, compete, and grow.

“This term is especially important for senior students as they prepare for NCEA assessments, and for all students working to consolidate their learning ahead of the final term,” says the principal.

Inspiring stories: local alumni spotlight

The College is also back to sharing its *Inspiring Stories* series, highlighting former students making waves in their chosen fields. First up: Charly Hika-Wright, a proud Ruapehu College alumna whose journey from traffic control to working with Downer in the construction industry is one of grit, growth, and ambition.

Charly speaks proudly of her close-knit community, where support and encouragement are second nature. She loves representing her hometown roots — proving that even from small towns like Ohakune or Raetihi, big dreams are possible.

Starting as a traffic controller with the iconic “stop/go” paddle, Charly has steadily progressed to the stabilising crew — spreading cement, milling, and rolling road patches. With qualifications like the STMS (Site Traffic Management Specialist) certification and class 1 and 4 licenses under her belt, she’s now setting her sights on her class 5 licence and even dreams of working in the Australian mining industry.

She credits English and maths for helping her with measuring and paperwork on the job, while Habits of Mind like persistence and flexible thinking have supported her growth — especially while learning to drive manual and adjusting to the demands of the job.

“Charly’s story is a must-watch for anyone considering a career in trades. Be sure to catch next week’s episode, where we’ll share Catherine Pakai-Dewes’ inspiring journey in marketing.”

Waimarino golf

Sunday was another beautiful day and the Waimarino Golf Club says it was great to see the course full of both local and visiting golfers.

Results – Sunday Huggle. The day’s format was Stableford. Winners: Pat Pikari – 38 points; Graham Murdie – 37; Trevor Barnard – 36; Alan Murdie – 35; Rob Edmonds – 34; Rob Brown – 33.

Nearest to the Pin: Geoff Leahy. Twos on the Day: Geoff Leahy (17) and Steve Gray (3).

18-Hole Handicap Pennants: The Club congratulates the team, taking the win 6–3.

Reminders: Green Fee players: use the DotGolf machine (by the shop) to pay before you play.

Trundler Room: clear your stations before September. Door locks will be changing.

Coming Up events: 10 August – final qualifying round for men’s and women’s club championships.

True Team Promise means our whole team works for you.

Contact your local Ohakune Consultant or Property Manager today!

Cameron Elliot
Sales Manager – Taumarunui / Ohakune
027 542 1009

Alan Blackburn
Rural / Lifestyle
027 203 9112

Polly Ingles
Residential / Lifestyle
027 315 8368

Jenna Hovelle
Residential / Lifestyle
027 361 0167

Ben Blakley
Property Manager
027 370 0914

Mere Haitana
Branch Administrator
06 385 4466

Scan the QR code to find us on Facebook

Property Brokers

Proud to be here

pb.co.nz

Property Brokers Ltd Licensed REAA 2008 | Q021335

12 • RUAPEHU BULLETIN 23 July 2025