



**NIPS  
is  
back  
P2**



**Emergency  
services  
changes  
coming  
P3**



**Makotuku  
car dump  
cleared  
P5**



**TASCI  
chief  
honoured  
P7**

## MetService wrong all season: Tūroa open, but report says closed

Tūroa Ski Field is closed and has been all season, according to MetService's weather website.

MetService has a ski field report section – under its "Mountains and Parks" tab.

The Tūroa page includes forecast information, but at the head of the page, is a permanent line that states: "Ski Field Closed; Road n/a; upper snow base n/a; lower snow base n/a; last snowfall n/a; weather forecast partly cloudy (as at Monday)."

The listing does inform visitors that there is "information missing".

"Several features on this page are unavailable. Our team are working to resolve the issue," states MetService.

"In the meantime please check the Tūroa website for more information."

Unfortunately, this advice is below the incorrect information and displayed in a smaller font, so is very easy to miss, especially on a smartphone.

Pure Tūroa director Cam Robertson expressed frustration on the problem.

He said the company has been trying to get it changed for months.

"It's connected through links and there's issues apparently," he said.

He said he is at a loss as to why they can't change it manually.

A local business owner, who asked not to be named, said the government-owned company (a

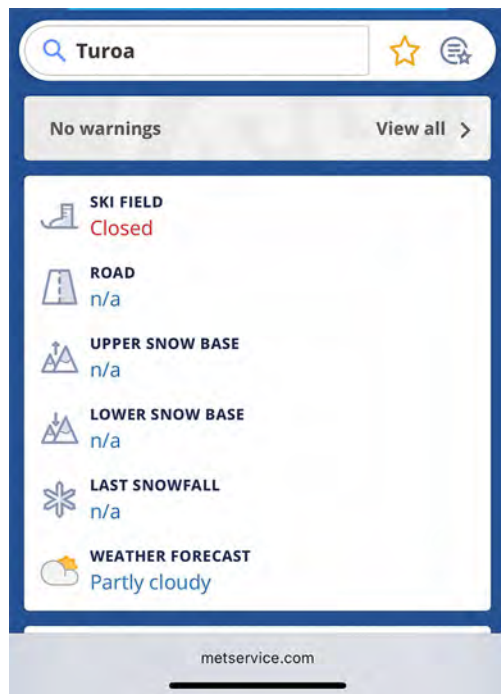
state-owned enterprise) must fix the issue urgently.

"Most people are aware that it is wrong and just go direct to Tūroa's website. But it is deeply concerning that people new to skiing and Tūroa may not go past the top line and go somewhere else."

He wondered if it was something to do with Pure Tūroa being new owners of the ski area.

"But it's interesting to note that Whakapapa is not affected by the problem,

**Turn to Page 2**



**Tūroa closed all season, according to MetService.**

## Daffodil Day Friday: raising funds for cancer



**Tūroa snowboarding instructor Zo, is a fan of Daffodil Day. She urges people to get out and buy some flowers to support the cause. See advert Page 3 for details.**

Daffodil Day this Friday is the annual fundraising effort for the Waimarino Cancer Society, with stalls once again planned for Raetihi and Ohakune.

Last year, they raised around \$8000, despite the tough economic times, which was up nearly \$2000 on the previous year. So they are hoping to match that great effort.

"This is the seventh year of organising for me and the fourth for Cate and we are both very grateful for the

support we receive from our community, our local schools and businesses in raising money for our local Cancer Society," says event co-ordinator Sarah Drinkwater.

"From donations of time and baking to running mufti days at our schools or just popping down on the day to get some morning tea and a bunch of daffodils, our community has always been extremely generous towards this fantastic cause."

## ALTOGETHER LOCAL

**Discover the Ruapehu region with Bayleys Real Estate.**

What do we have that makes us truly unique? We have a culture of togetherness and of connectedness. It's what makes Bayleys, Bayleys. Bayleys is Altogether Better. If you are thinking about buying or selling, contact us today.

**BAYLEYS** ALTOGETHER BETTER

**Bayleys Ruapehu**

16 Goldfinch Street | 06 385 0170  
bayleys.co.nz/ruapehu

BARTLEY REAL ESTATE LTD, BAYLEYS, LICENSED UNDER THE REA ACT 2008

Residential / Lifestyle / Commercial / Rural



# School ski champs back after five years



NIPS is back: a school ski racer heads off on their run in the Valley at Whakapapa on Monday. Photo: Whakapapa.

The North Island Primary & Intermediate Schools Snowsports Championship has returned to Whakapapa for the first time since 2019.

Whakapapa chief executive Travis Donoghue said that with many racers arriving over the weekend, organisers decided to add something different to the programme.

“Just for a bit of variety we ran a mini rail jam in Happy Valley on Sunday. It was a great chance for all comers to practice an entirely different set of skills on the rail.”

The first leg of the races took place on Monday in perfect bluebird conditions.

“A great first day, we were really pleased with the course and the sunshine in the Pinnacle Valley. Everything went smoothly and this will have been a great first race experience for many of the kids.”

Monday was a solo timed Giant Slalom for Years 5–8.

David Liu from the Northern Ski Team (RDS) posted the fastest times in both his runs, recording 15.51 seconds each. He was closely followed by Joseph Jia of the Queenstown Alpine Ski Team and Steven Huang of Team Hutt.

The team event focuses on the performance of the whole school team rather than just individuals. Trophies are awarded for Years 1–4 Team 1st Place, Years 5–6 Team 1st Place, and Years 7–8 Team 1st Place. School team medals are presented to the 1st, 2nd, and 3rd placed

teams in each category, with the top three athletes whose points counted toward the team result receiving those medals. Ski individual medals are awarded to the top three place-getters in the Giant Slalom and Dual Slalom.

The event marked 30 years in 2019 and has grown to become one of the largest snow sports competitions in the southern hemisphere. This year, for the first time, it is officially sanctioned by Snow Sports NZ.

Chris Bashforth, snow sports manager at Whakapapa, said they were determined to bring the event back.

“NIPS is an inclusive competition, open to all primary and intermediate students from across the North Island. It gives students a fun and safe opportunity to get involved with alpine ski racing, with seasoned racers uniquely competing alongside school peers.”

Donoghue says the competition is a key stepping stone for the next generation of ski racers.

“Without it there’s a very big gap, especially for kids in the North Island. This is a fun and accessible event and gives rangatahi their first taste of snow sports competition.”

Racing was to continue on Tuesday, with competitors to line up in a head-to-head dual slalom against the racer with the closest time from Monday. Lower down the mountain, Years 1–4 were to take on their own giant slalom, before the event wrap-up with prizegiving in the afternoon.

## Crater Lake warming up

Te Wai ā-moe (Ruapehu Crater Lake) is now heating again, reports GNS. Since mid-July the lake temperature has been rising and is now 16°C.

Earthquake, volcano gas, lake chemistry and volcanic tremor data are all within typical ranges and no unusual changes have been observed, reports duty volcanologist Steve Sherburn.

“A well established and normal behaviour for the Crater Lake is to go through successive heating and cooling periods that commonly last several months,” says Sherburn.

He said the lake temperature typically peaks at 30–40°C and cools to 10–15°C. The lake reached 10°C before starting the latest heating.

Lake heating is commonly caused by more hot gas and steam getting into the lake from vents at the bottom. This disturbs sediment on the lake floor, which becomes suspended in the water, changes the colour from a blue-green tinge to a more grey colour. Minor upwellings of hot water are also present at the lake surface, as are yellow sulphur slicks.

The amount of gas passing through the lake is within the normal range and volcanic tremor remains low.

“Taken together, the observations indicate Ruapehu continues to exhibit typical low levels of activity consistent with minor volcanic unrest; therefore, the Volcanic Alert Level remains at 1 and the Aviation Colour Code remains Green.”

## MetService report

From Page 1

despite Whakapapa only being taken over earlier this year.

“And it’s not just detrimental to the ski area – Ohakune relies on visitors to the ski area. Even a small number of people who are put off visiting will have a negative effect on local businesses.

“This town has had more than its fair share of blows lately – we need help, not this kind of slackness.”

He said he can’t understand why MetService can’t seem to fix it, or perhaps doesn’t want to.

“Aren’t they concerned about their own credibility? Surely they want to provide accurate information, for their own reputation?”

The *Bulletin* contacted MetService, who promised to look into the issue and respond. No reply had been received at the time of going to print and the Tūroa report still states the field is closed.

WEATHER FORECAST  
Partly cloudy

Information Missing

Several features on this page are unavailable. Our team are working to resolve the issue. In the meantime please check the Tūroa website for more information. [Tūroa Snow Report](#)

The MetService report does point out that there is information missing, but it is below the bottom of the first screen on a smartphone.

## MetService replies

MetService replied to our questions, but after our print edition deadline. Following is their statement:

“The status of the ski fields relies on an automatic feed of data provided by the ski fields.

“Unfortunately, this feed of information has not been available from Tūroa this year and therefore, the information we are displaying on our website is the latest data available to us.

“We are keen to have the most up to date Information available for all the ski fields across New Zealand and have reached out to the team at Tūroa to have this feed reactivated.

“As a temporary solution, we have displayed a banner on the Tūroa web pages directing users to their website and we are keen to work with the ski field to find a longer-term solution.”

*Editor comments: This information raises more questions, which we will try to find answers for over the coming week.*

## Ruapehu Events & What’s On

### AUGUST 2025

**Junction Winterfest** 23 August - 6 September  
Winter Art Exhibition, TASCI Fundraiser, NZ Mountain Film Festival and much more. [Ohakunejunction.co.nz](http://Ohakunejunction.co.nz)

### SEPTEMBER 2025

**James Bond, From Russia with Love** 6 September

**2001: A Space Odyssey** 13 September

**Butch Cassidy and the Sundance Kid** 20 September

**The Sound of Music** 27 September

Full details on the Theatre Facebook [www.facebook.com/royal.raetihi](http://www.facebook.com/royal.raetihi)

**Pond Skim - Whakapapa** 13 September

More on this event at [www.whakapapa.com](http://www.whakapapa.com)

**NI Secondary Schools Champs** 15-17 September  
Visit [www.nissc.nz](http://www.nissc.nz) or Facebook North Island Primary & Secondary School Snowboard & Ski Competition. Email [haigsnowboard@gmail.com](mailto:haigsnowboard@gmail.com) or [nissc.snowsports@gmail.com](mailto:nissc.snowsports@gmail.com)

**Ruapehu Art Awards** 17 September - 1 October  
[www.ruapehuartawards.com](http://www.ruapehuartawards.com)

**Bev Hiscox Spring Flower Show** 20 September  
Enquiries to Di Rout 021 657 343

**Retro Day** 27 September

The Kitchen, 4 Thames St, Ohakune Junction. See Facebook page for details. #RETRODAYOHAKUNE or [ohakunejunction.co.nz](http://ohakunejunction.co.nz)

For all your ski board and bike rental needs

**T C B**

Ski, Board & Bike  
Cnr Ayr St & Goldfinch St, Ohakune  
06-385-8433 [tcb.nz](http://tcb.nz)

FOR MORE DETAILS, GO TO

[OHAKUNE.INFO](http://OHAKUNE.INFO) or [RUAPEHUNOW.CO.NZ](http://RUAPEHUNOW.CO.NZ)

IT’S FREE TO LIST SO PLEASE LET US KNOW IF YOU

HAVE AN EVENT COMING UP ...

[ADS@RUAPEHUBULLETIN.CO.NZ](mailto:ADS@RUAPEHUBULLETIN.CO.NZ)

LINK YOUR EVENT TO EVENTFINDA FOR FREE

## Eating out in the Ruapehu District

Call 06 385 8532 to list your business here

### KINGS BAR & RESTAURANT

**3 Rimu St Ohakune Junction Ph: 06 385 8648**

Est in 1913, historic Kings offers an inviting menu by international chefs, a great selection of boutique wines and craft breweries including award winning Ruapehu Brewing Co beers in the fridge and on tap. See our Facebook page for what’s on. Please check our open times as these will vary.

### LA PIZZERIA

**6 Thames St, Ohakune Junction Ph: 06 385 8558**

Ohakune’s most famous pizza restaurant, for over 37 years we have been serving Ohakune’s best pizza. Come up and see us in the “Junction” at the end of the Old Coach Road and try one of our hot, tasty, handmade pizzas. Same great menu available for takeaway. Open 7 days, 4 – late. Check us out online at: [www.lapizzeria.co.nz](http://www.lapizzeria.co.nz)

### LKNZ LODGE & CAFE

**1 Rata St, Ohakune Ph: 027 257 LKNZ (5569)**

Open every day. Menu includes our delicious big breakfast, creamy mushrooms, homemade soups, wedges, nachos, toasties, waffles and more ... Volcanic coffee, muffins & scones, real fruit smoothies and thick shakes. Dine in or takeaway. Onsite parking. [www.lknz.co.nz](http://www.lknz.co.nz)

### POWDERKEG

**Bottom of the mountain road Ph: 06 385 8888**

For over 35 years, The Powderkeg has been serving up exceptional food and service in a warm, welcoming atmosphere. Whether you’re enjoying a sunny afternoon on our spacious balcony or indulging in our weekly specials like Sushi Fridays and Smokehouse Sundays, there’s always something to look forward to. Join us for an unforgettable dining experience and follow us on Instagram @powderkegbar for the latest updates and mouthwatering offers! Open 7am till late daily.

### THE CYPRUS TREE

**79 Clyde St, Ohakune Ph: 06 385 8857**

Check out our new menu. Kiwi craft beers, boutique wines and cocktails to quench that thirst. Playroom for the kids, foosball, air hockey and spaces to keep the kids entertained. Spectacular mountain views. A great place for casual get togethers or special occasions. Open every day.

### UTOPIA CAFÉ

**47 Clyde St, Ohakune Ph: 06 385 9120**

Open 7 days from 8am – 3pm for all day breakfast and lunch. NOW SERVING HAVANA COFFEE. A cosy memorable atmosphere with a great range of cabinet food and beverages, Frappé and smoothies. Vegan/Gluten-free options for both savoury and sweet are available. Speedy free Wi-Fi! A perfect place for everybody!



# RDC builds resilience ahead of CD reforms

Emergency preparedness in Ruapehu is being enhanced in advance of major Government reforms to New Zealand's emergency management system.

Ruapehu District Council chief executive Clive Manley said findings from Government inquiries into recent severe weather events have driven significant legislative change with a new Emergency Management Bill set to replace the Civil Defence Emergency Management Act 2002.

Alongside the new Bill the Government is also intending to deliver operational improvements in risk reduction, readiness, response and recovery which align with Council's increased focus on these areas.

"As the first response in any emergency will always come from local communities the Government is aiming to ensure councils can deliver a consistent minimum standard of emergency management across the country.

"A top priority for Council is strengthening the skills and capacity of emergency management staff and the wider community to help build district resilience.

"Our aim is to ensure Ruapehu is more resilient, more capable, and better prepared for whatever emergencies come our way," he said.

Emergency management officer Simon Osborne added that recent investments in new technology for the Emergency Operations Centre (EOC) coupled with on-

going staff training are aimed at improving Council's response capability.

"We have implemented the D4H emergency management platform which supports planning, co-ordination, communication and reporting during incidents along with interoperability with other councils," says Osborne.

A major focus for Council is also on lifting local capability.

"With support from the Civil Defence Emergency Management Resilience Fund, we have run 20 marae-based training events providing NZQA-accredited qualifications to more than 250 participants.

"Strengthening Māori skills and resources in this way strengthens the entire emergency response system and benefits all communities," he said.

Council also hosted King Country Scouts at the Taumarunui Emergency Operations Centre (EOC).

"We had 18 cubs and scouts visit us to learn about civil defence and the role of the EOC, where they were able to experience operating two-way radios to communicate with the Regional Coordination Centre in Palmerston North.

"These initiatives reflect the Government's emphasis on a "whole-of-society" approach to civil defence preparedness.

"By building the skills of our staff and communities, we are making Ruapehu stronger, safer, and better prepared," he said.



Emergency management officer Simon Osborne explains the civil defence two-way radio set-up to local cubs and scouts during a recent visit to the Taumarunui Emergency Operations Centre (EOC). The visit was part of Council's commitment to community education and engagement in emergency management. Photo: RDC.

## Successful 2025 game bird season draws to a close



Good year for hunting, bad year for ducks, reports Fish & Game. Photo supplied.

As game bird hunting seasons conclude across the country, early indications suggest the 2025 season has been another successful year for New Zealand's hunting community, reports Fish and Game.

Survey results following the May opening weekend paint a positive picture, with hunters nationally reporting strong satisfaction with their experiences. On average, hunters ranked their opening weekend satisfaction at 4 out of 5, matching the high standards set during the 2024 season.

While not all regions reported a great season, more than 70% of hunters reported feeling satisfied or very satisfied with their opening weekend

experience. The estimated mallard harvest reached approximately 240,000 birds – representing a notable 15% increase compared to the 2024 opening weekend harvest.

"The strong satisfaction levels we're seeing reflect the enthusiasm we witnessed during opening weekend, with hunters from all over New Zealand coming together at wetlands and waterways," said Fish & Game Acting Chief Executive Richie Cosgrove.

"It's a tradition spanning generations – bringing families together while connecting with our rural heritage and sustainably harvesting kai. It's also about the well-being benefits of spending time

Turn to Page 4

Whanganui-Rangitikei-Waimarino Cancer Society

DAFFODIL DAY

Friday 29 August

Raetihi

Starting at 8.30am,  
Seddon Street, Raetihi

- Fresh and silk daffodils
- Raffles
- Baking & produce
- Cancer Society merchandise
- Daffodil Bouquets

Ohakune

Starting at 9am,  
outside New World

- Fresh and silk daffodils
- Raffles
- Baking & produce
- Cancer Society merchandise

Sausage Sizzle & Steak Sandwiches Available in Ohakune from 10:30am

Cancer Society

Te Kāhui Matepukupuku o Aotearoa



Visitor Information

For expert local knowledge, call or visit us now:  
0800 647 483    isite@ruapehu.govt.nz

Ohakune  
54 Clyde Street  
9am – 4pm, 7 days

Taumarunui  
Railway Station, 116 Hakiaha Street  
9am – 4pm, 7 days

RUAPEHU BULLETIN 27 August 2025 • 3



Letters

Everyone wants it back

I posted about Christie Park on social media and got 43 comments. Here's a few of them:

"Everyone wants the park back! It was safe, the local hangout and kids would play for hours .... the Carrot Park is beautiful but it's hard trying to keep the kids happy 'cause not much for the older kids or toddlers ... Christie Park had it all for our kids: our grandies loved to hone their skateboard, scooter and bike skills on the old asphalt courts, while our babies played at the park ... They learned important life skills in a small, quiet setting ... My mokopuna loved it there and close to home, a nice walk for them, not now ... Those toilets there a disgrace horrible! ... John, it's easily explained; council staff know better, end of story." (tinyurl.com/playgroundgone)

Ohakune's working-class families need all the artificial plastic lawn removed so their kids can once again use the hard seal beneath it.

The netting next to the grass needs to be removed so kids can once again have easy access to the hard seal and can exit safely. (The two roadside nets keep kids safe from stranger danger).

The gunny toilets need to be upgraded to make them fit for mums with toddlers.

The little ones' swings and slides need to be rebuilt right where they were previously: close to the picnic tables, car park and (upgraded) toilets.

The RDC's out-of-control LGOIMA has apparently misspent all the money that our hard-pressed local working-class ratepayers gave them for maintaining their kids' playground, so I am calling upon our rich business-people and land-owners to fund this reparation work, just as they have funded a playground for rich visitors, and I call upon local volunteers to do this work.

John Archer, Ohakune

Editor comments:

I assume you are referring to the Carrot Park in your comment about "a playground for rich visitors". Many people who supported – and continue to support – the Carrot Park could be forgiven for feeling insulted by your comments. I doubt that there are any "rich business-people" in Ohakune with the current economic climate. Despite this, many of the groups, businesses

and individuals who supported the Carrot Park have done so anyway.

If you go for a walk around the Carrot Park, you will notice many,

many bricks with names of families and individuals who have donated towards the development of the Park – calling them "rich business-people and (rich?) landowners potentially insults them too.

While you're walking around the Carrot Park, you will also notice many, many people enjoying the facilities, including many locals as well as visitors of all socio-economic status. To call these people "rich visitors" is a bit rich and undermines your appeal.

Many people agree with your call for the Christie Park playground – originally paid for from Ohakune Plunket funds – to be reinstated. We are aware of efforts under way to have the playground reinstated, with some of those efforts being carried out by people and groups who have also supported the Carrot Park.

Writing divisive comments about supporters of the Carrot Park is not helpful.

Overspend

Budget overspend \$700,000 ... part of this overspend is to do with the Raetihi reserves Maintenance account.

Of the overspend of approximately \$102,000 \$85,000.00 was on unbudgeted professional services consultancy costs.

Perhaps our current Mayor should have spent more time in his office going over the council budgets, rather than cruising around the countryside getting his photo taken so your Bulletin could publish it.

Phillip Harvey

Weston Kirton replies

The claim that as Mayor I should have "spent more time going over Council budgets" to avoid the overspend shows a misunderstanding of how local government works.

Elected members, including the mayor, set the strategic direction and approve what needs to be done. The chief executive and staff are then responsible for managing how that work is delivered – including day-to-day budget management. This is done through delegated authority and internal controls, not through councillors or the mayor checking line-by-line spending.

Council has taken the overspend seriously and acted appropriately. Ratepayers can be confident the right steps are being taken, by the right people, in the right roles, to ensure it has been thoroughly investigated and will not happen again.

As for the suggestion that I am simply "cruising around the countryside getting my photo taken," misses the critical importance of keeping Ruapehu's needs and rural issues on the national agenda and ensuring they are not overlooked by Government and its agencies.

Using the profile of the mayoral office, I have helped unlock government funding to keep the ski fields open, secured ministerial backing for the Waimarino Health Centre, returned passenger rail to Taumarunui and removed derelict carriages from the railyards, maximised support for WPI mill workers, promoted the Parliamentary Petition to Save the Chateau saving it from potential demolition and bringing forward credible investors, amongst highlighting many other issues impacting our communities.

I make no apology for using my position to highlight Ruapehu's challenges and to fight for a better deal for our people. For as long as I am mayor, I will continue to do so.

Weston Kirton, mayoral candidate

Candidates write

This section is set aside for letters from Ruapehu District election candidates.

Letters are limited to 300 words and the Editor reserves the right to edit or reject any letter. Priority will be given to candidates who haven't had letters published previously.

Letters will be published as space allows.

GST share

In regions like Ruapehu, where tourism is both a lifeline and a logistical challenge, the question of who pays for the wear and tear left by visitors is becoming increasingly urgent. Every year, thousands flock to the district's natural wonders – Tongariro National Park, Whakapapa and Turoa ski fields, and the famed hiking trails – bringing economic vitality but also placing strain on local infrastructure. Yet while tourists spend freely and generate significant Goods and Services Tax (GST) revenue, that money flows directly to central government, leaving local councils like Ruapehu to foot the bill for maintenance, upgrades, and essential services.

Currently, there is no formal mechanism for returning a portion of GST receipts to the

regions that generate them. This creates a funding imbalance, especially for small councils managing high visitor volumes. Redirecting a share of GST revenue from local tourism back to the Ruapehu District Council would be a transformative step. It would allow the council to reinvest in tourism infrastructure, improve visitor experiences, and support local businesses—all while easing the financial burden on ratepayers.

The Ministry of Business, Innovation and Employment has previously partnered with Ruapehu District Council through initiatives like the Ruapehu Regional Visitor Development Plan (RRVDP), aimed at enhancing tourism and economic resilience. Allocating GST revenue would build on this foundation, offering a sustainable funding stream to support long-term growth.

Such a move would also acknowledge the unique challenges faced by tourism-dependent regions, especially in the wake of climate disruptions and infrastructure strain. By sharing GST revenue, Central government would not only support Ruapehu's development but also signal a commitment to fair and inclusive economic policy.

John Chapman, Ruapehu District Council candidate

Game bird season

From Page 3

outdoors with mates and family."

Hunting season is not just about harvest, he says.

"Hunters are amongst our most dedicated conservationists. These wetland habitats support not just game birds but many other species – and our licence holders directly fund their protection and restoration.

"The continued success relies on farmers who generously open their properties to hunters, ensuring many New Zealanders have access to hunting opportunities.

"Getting outdoors with family provides such a valuable break from screens and technology, while also putting quality kai on the table.

"And you can still hunt upland game birds in most regions till the end of August. Many regions also have summer seasons in January and February, so we encourage people to check our website for details or scan the QR code on their licence."

THE WEEKLY WORKOUT

answers for each puzzle are included on this page

816

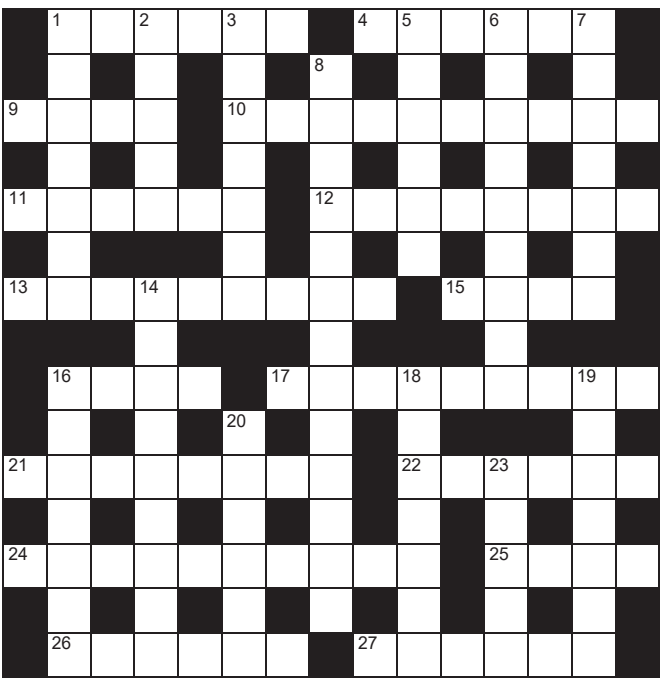
QUICK CROSSWORD

Across

- 1. Solution (6)
- 4. Claw (6)
- 9. Animal enclosure (4)
- 10. Unparalleled (10)
- 11. Quick look (colloq) (6)
- 12. Adolescent (8)
- 13. Bordering (9)
- 15. Eye infection (4)
- 16. Composed (4)
- 17. Sign up to (9)
- 21. Earlier (8)
- 22. Take for granted (6)
- 24. Unintelligible (10)
- 25. Expel (4)
- 26. Expensive (6)
- 27. Defeated (6)

Down

- 1. Embarrassed (7)
- 2. Ledge (5)
- 3. Version (7)
- 5. In the same place (L) (6)
- 6. Person in play, film or book (9)
- 7. Alleviate (7)
- 8. Celebrated (13)
- 14. Unaware (9)
- 16. Persistent (7)
- 18. Surprise (7)



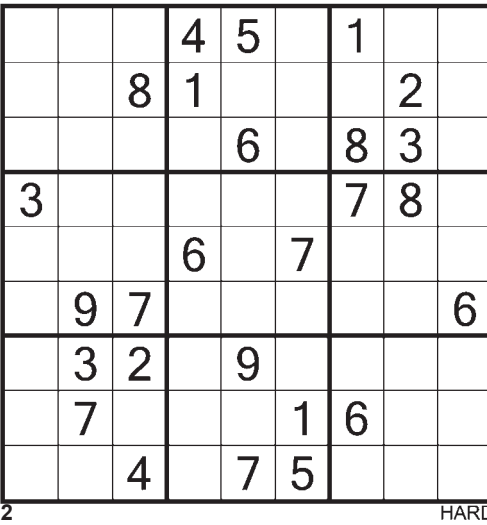
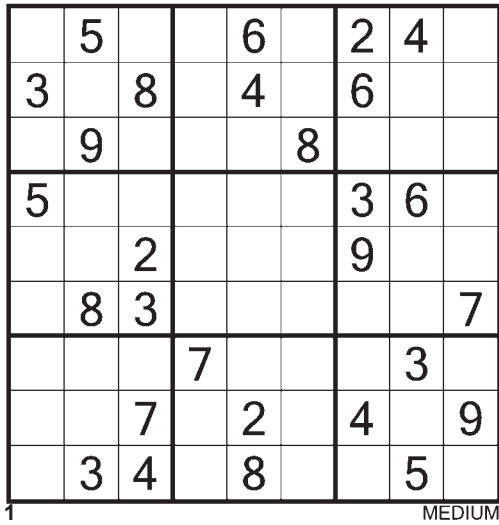
- 19. Perplexed (7)
- 20. Of the north (6)
- 23. Yell (5)



Puzzles © The Puzzle Company

SUDOKU

Fill the grid so every row, column and every 3x3 box contains 1-9



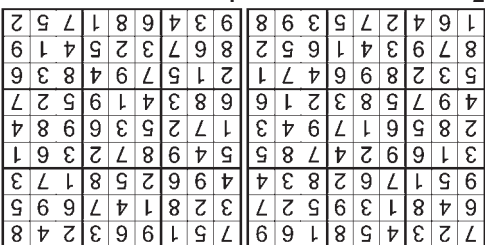
The Top 10

- 1. A driving licence will be suspended if someone runs up how many demerit points within two years?
- 2. Who wrote Journey to the Centre of the Earth, in 1864?
- 3. In a calendar year, which two consecutive months have the most days?
- 4. In chess, pawns occupy what percentage of the total squares at the start?
- 5. Jack the Ripper terrorised which suburb of London?
- 6. What is the collective term for a litter of piglets?
- 7. A tarpon is what type of creature?
- 8. Water polo has four quarters each of what duration: eight, 12, or 15 minutes?
- 9. The world's highest capital city is in which continent?
- 10. Bob Hoskins plays Eddie Valiant in what 1988 partly animated film?

CROSSWORD

Across: 1. Answer, 4. Pincer, 9. Cage, 10. Inimitable, 11. Shufti, 12. Teenager, 13. Adjoining, 15. Style, 16. Calm, 17. Subscribe, 21. Previous, 22. Assume, 24. Incoherent, 25. Oust, 26. Costly, 27. Bested. Down: 1. Abashed, 2. Shell, 3. Edition, 5. Ibidem, 6. Character, 7. Relieve, 8. Distinguished, 14. Oblivious, 16. Chronic, 18. Startle, 19. Bemused, 20. Boreal, 23. Shout.

SUDOKU





# Illegal dump all clear

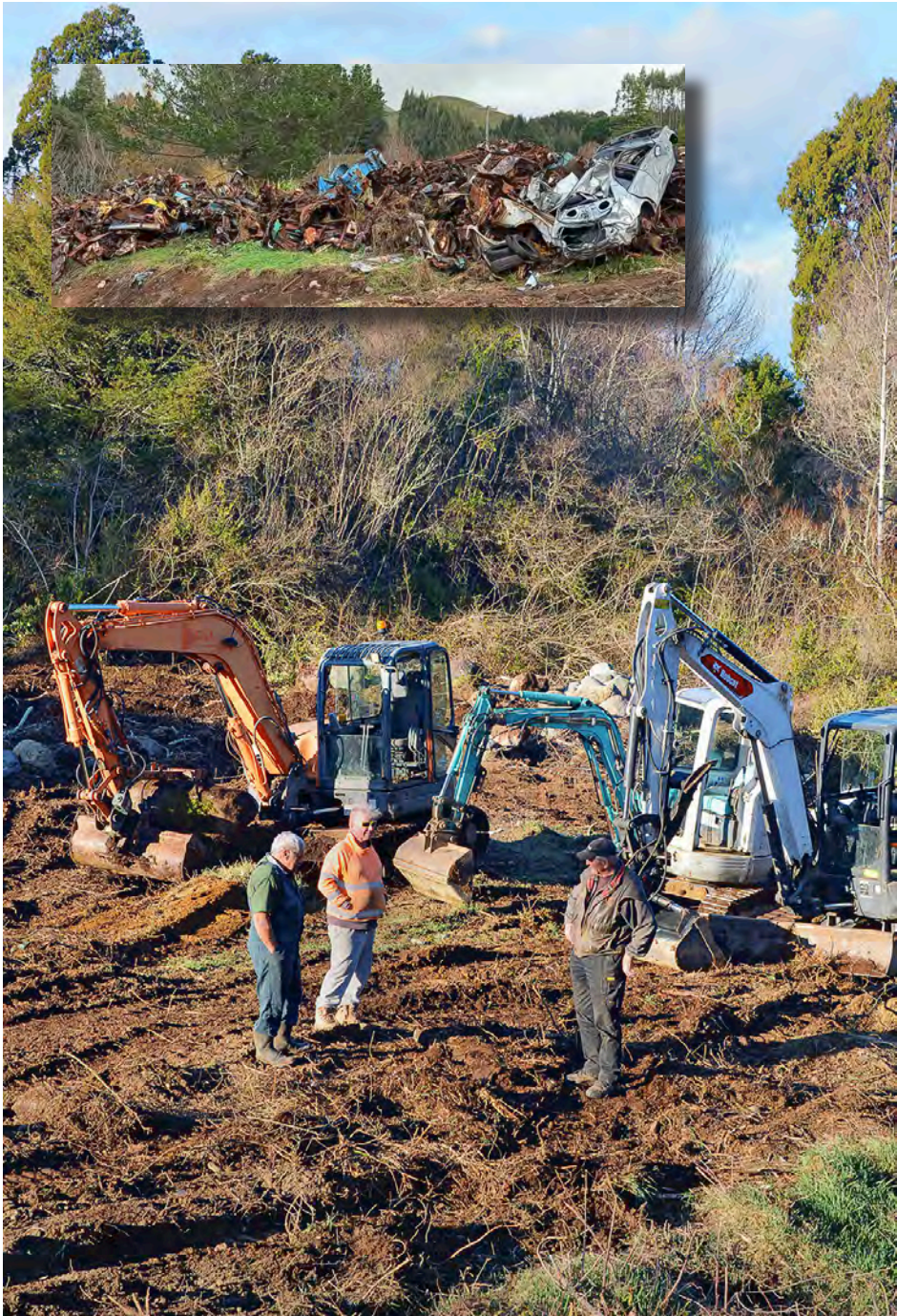
The final clearing of decades of trashed car bodies from an unofficial dump site in Raetihi has not only put a stop to the ongoing contamination of the Mākōtuku River, but revealed a very special space ripe for native restoration.

Late last year the tamariki of Raetihi School asked Ruapehu District councillors whether the cars and rubbish languishing in a gully east of the town's cemetery could be cleared up.

They told Council that the cars were ugly, unsafe, and polluting the water, that the community should be known for its beauty and that the cars should be removed and replaced with trees, birds, and a healthy wetland for future kids.

Following over 60 volunteer hours in their diggers the mammoth efforts of Paul Kumeroa from Hillview Stock Trucks, contractors Councillor Rabbit Nottage and Alan Whale, were joined at the site over the last few months by Darren Griffin from Kui Griffin & Co, Haitana Earthworks's Dale Haitana and car crusher Colin Fredricksen from Horopito Motors. This has revealed a beautiful natural amphitheatre space and natural wetland.

Local environmental charity Project Tongariro is currently in the process of seeking permission from Council to draft a five-year staged restoration and development plan for their land.



Car clean-up volunteers, from left, Paul Kumeroa from Hillview Stock Trucks, contractors Councillor Rabbit Nottage and Alan Whale. Above right: Cr Rabbit and Colin Fredricksen load a wreck onto a truck for removal. Inset: just some of the car wrecks removed. Photo: Liz Brooker.



## SPRING IS ON THE HORIZON

LIST YOUR PROPERTY AHEAD OF THE HERD

At Bayleys, we know the land because we were raised on it. We live and breathe this region, deeply connected to every hectare, from the productive hill country to the fertile flats. We understand it like the back of our calloused hands. With decades of experience behind us and boots firmly on the ground, our rural team understands what makes farms, lifestyle blocks, and agribusinesses tick. We're not just agents, we're rural experts. And that's exactly what you need when it's time to list.

Spring is traditionally the busiest time of year in real estate – but the smart ones list early. Getting your property to market now means beating the seasonal rush and giving it the best chance to shine while buyer competition builds. Our marketing campaigns are sharply targeted, our reach is national, and our results speak for themselves. From sheep and beef to dairy, horticulture, or lifestyle, Bayleys brings the horsepower to take your property to market and get it sold.

Call Bayleys to get ahead of the herd!

Bayleys Ruapehu 06 385 0170  
16 Goldfinch Street, Ohakune

BARTLEY REAL ESTATE LTD, BAYLEYS, LICENSED UNDER THE REA ACT 2008



BAYLEYS | country



### G.J. Gardner. HOMES

Floor plan diagram showing a house with three bedrooms, a living area, dining, and kitchen.

BEST PRICE, BUILD NOW  
SUMNER 119m<sup>2</sup> FROM \$415,000

GJ Gardner, Wilson Street, Whanganui. Call Jack 0272 600 693. Email Jack.Bullock@gjgardner.co.nz





## Ruapehu 'adventure outpost' celebrated

A Ruapehu hut was celebrated on Friday 22 August at the Taranaki, Whanganui and Manawatu ADNZ Resene Architectural Design Awards.

Diego Marangoni of Arkhē received a Commended award for New Home up to

**Ruapehu Hut at Horopito – an architectural award winner. Photo: Diego Marangoni.**

150m<sup>2</sup> for his work on Ruapehu Hut.

Designed as an 'adventure outpost' in Horopito, the compact 60m<sup>2</sup> home draws inspiration from New Zealand's iconic DOC huts.

Positioned for uninterrupted views of Mount Ruapehu, ADNZ says it balances pragmatic shelter with a strong connection to the landscape. Durable materials and passive design strategies ensure efficiency, comfort and a reduced carbon footprint.

ADNZ judges said the alpine refuge reimagines the traditional DOC hut through crisp lines and contemporary detailing.

"Its compact footprint and modest materiality foreground comfort and clarity over nostalgia."

Keryn Davis, CEO of Architectural Designers New Zealand, said the award winners demonstrate the diversity of work completed by members of ADNZ.

"ADNZ members work on complex, unique and innovative projects across New Zealand. They do not only create beautiful homes, but they are also responsible for civic buildings, holiday houses, apartments, developments and much more. Congratulations to Diego and Susie."

The Regional winners will now proceed

to the National Awards on Friday 31 October. As one of the most prestigious architecture awards in the country, more than 140 entries were received to the 2025 ADNZ Resene Architectural Design Awards. Congratulations to the winners.

The citation reads: "This alpine refuge reimagines the traditional DOC hut through crisp lines and contemporary detailing. Its compact footprint and modest materiality foreground comfort and clarity over nostalgia."

## OMR crash



**A car crashed off the Ohakune Mountain Road on Saturday, on Rimu Hill. Witnesses said the car, travelling downhill, was passing cars on blind corners before losing control and crashing down the bank, narrowly missing large trees. Photo supplied.**

## SUZE REDMAYNE

### MP for Rangitīkei

#### Your local Member of Parliament

Please contact me for advocacy services, individual assistance or access to the parliamentary process.

#### Taumarunui Office

Shop 1, Town Centre Arcade  
101 Hakiaha Street • 07 896 8008

#### Connect with me

Suze.RedmayneMP@parliament.govt.nz

f suzeredmaynemp @ suzeredmaynerangitikei

Funded by the Parliamentary Service.  
Authorised by S Redmayne, Parliament Buildings, Wgtn.



# Inspiring Local Minds

The Lines Company (TLC) awards scholarships to three local students each year who are attending tertiary education, providing recognition and financial support

Applications close soon

31 August 2025

Application forms and criteria can be found on our website  
[thelinescompany.co.nz](http://thelinescompany.co.nz)

\$2k

For each  
year  
of study



# NZDF stealth meets lethality in Waiouru

In the tussock grasses of Waiouru, New Zealand Army snipers, supported by Australian and US Army comrades, recently delivered training to Pacific partners to enhance our collective lethality and interoperability.

“It almost goes without saying that the ability of a marksman to remain undetected is a fundamental skill, but it’s so much more than just being able to move around stealthily,” says Soldier X, one of the NZ Army snipers leading the exercise. “It’s the meticulous planning before you go into the field, it’s knowing every detail of your target’s movements and routines, it’s setting up decoys and employing deception techniques, and ultimately the need for incredible resilience and mental toughness to stay focused in all sorts of conditions, often isolated by yourself.”

The soldier said it may be days, weeks or even years of training and waiting for the opportunity to execute a mission, so when the moment comes, it can’t afford to be missed.

Recently, New Zealand and partner nations’ personnel were tested in the tussock grasses and changing conditions of the Waiouru Military Training Area as they honed their marksman skills and tactics on a course led by the New Zealand Army.

Not that you’d easily spot them, especially from a distance.

The Pacific Sniper module was one of three hosted by the NZ Army, which also included a Training Design and Intelligence module.

The course was delivered to support various long-range reconnaissance units within the Pacific, with soldiers from Papua New Guinea, Timor-Leste and Fiji attending.

The NZ Army’s director of international engagements, Lieutenant Colonel Vanessa Ropitini, says this kind of opportunity to train alongside Pacific partners is invaluable, and an area where the NZDF gains valuable insight in return.

“Ngāti Tūmataunga, the New Zealand Army is from, and of the Pacific – and so having the chance to get out into the training area with our sisters and brothers from the Pacific is not only hugely

valuable on a personal level to build on those peer-to-peer relationships, but it also provides crucial insights into how we each operate, where our collective strengths are and how we can best support each other in the tactical environment,” said Lieutenant Colonel Ropitini.

The high-quality training also allows NZ’s units to maintain a level of interoperability with partners in the Pacific and continues to build on what are significant and deepening relationships in the region.

“The quality of soldiers in the Pacific from across all our partner nations is incredibly high, and so these weeks are not about teaching the basics – far from it. It’s about how do we refine our skills at that top-level, to enhance each of our capabilities and lethality. We look forward to the next opportunity to work alongside our partners,” said Lieutenant Colonel Ropitini.

The soldiers conducted a variety of training scenarios in both Ardmore and Waiouru, covering how to engage sniper targets, judge distances, stalk an objective, as well as a variety of skills around observing and reporting information and operating various equipment.

“The ability to train and operate alongside our Pacific comrades in advance marksmanship training – or any training for that matter – requires patience and a determination to succeed through kinship. We may have soldiers come to us with varying levels of knowledge and skill, including language barriers, but the diversity of cultures within the NZDF gives us a great scaffolding to do this, and we are renowned for our ability to foster relationships and build rapport in the field,” said Soldier X.

“Marksmen are a different breed of soldier who can either operate individually or in small teams, who take pride in their trade and are always looking for self-development. These are traits born out of our history and ones we wish to continue to strengthen alongside our Pacific brethren.”

NZDF note: The NZ Army sniper cannot be named for operational and security reasons.



A sniper is well-camouflaged in the wilds of Waiouru during a combined USA, Australia and New Zealand training exercise. Photo: NZDF.

## TASCI stalwarts honoured



David Seifert, left, and Ann McDonnell were honoured by their fellow-TASCI members recently, for their efforts for the club. David has served eight years as club captain for Tūroa Alpine Ski Club Incorporated (TASCI), 12 years as vice captain and 12 years as president. He was farewelled from the Club at their recent AGM. Ann McDonnell was also presented with a gift for her 12 years of work as Club secretary. Brent Flower has taken on the role as president. Photo: Dee Porter.

Proudly supporting the Whanganui -Rangitikei-Wairarapa Cancer Society this Daffodil Day

**NATIONAL MUSEUM**  
TE MATATOA

Proudly supporting the Whanganui -Rangitikei-Wairarapa Cancer Society this Daffodil Day

**RFfp**  
RON FREW Family Partnership Ltd

Proudly supporting the Whanganui -Rangitikei-Wairarapa Cancer Society this Daffodil Day

**B&M PLUMBING LIMITED**

Proudly supporting the Whanganui -Rangitikei-Wairarapa Cancer Society this Daffodil Day

**PKF Doyles**  
Chartered Accountants

Proudly supporting the Whanganui -Rangitikei-Wairarapa Cancer Society this Daffodil Day

**TREADWELL GORDON**  
Barristers, Solicitors, Notary Public

Proudly supporting the Whanganui -Rangitikei-Wairarapa Cancer Society this Daffodil Day

**Westlorne Upholsterers**

Proudly supporting the Whanganui -Rangitikei-Wairarapa Cancer Society this Daffodil Day

**PlaceMakers**

Proudly supporting the Whanganui -Rangitikei-Wairarapa Cancer Society this Daffodil Day

**Plateau Surveyors Limited**

Proudly supporting the Whanganui -Rangitikei-Wairarapa Cancer Society this Daffodil Day

**BAYLEYS**  
BARTLEY REAL ESTATE LTD.  
LICENSED UNDER THE REA ACT 2008

Proudly supporting the Whanganui -Rangitikei-Wairarapa Cancer Society this Daffodil Day

**Ruapehu Bulletin**

Proudly supporting the Whanganui -Rangitikei-Wairarapa Cancer Society this Daffodil Day

**PINNACLE ACCOUNTANCY**

Proudly supporting the Whanganui -Rangitikei-Wairarapa Cancer Society this Daffodil Day

**Mayor Weston & Annette**



ADVERTORIAL

## Trusted local electrician since 2003

For more than 20 years, Mountain Electrical has been proudly serving the southern Ruapehu community, helping keep the lights on from Ohakune to Raetihi, Waiouru, Rangataua, National Park, Whakapapa Village and Raurimu.

Mountain Electrical's focus has always been on working directly for their clients, rather than subcontracting to large developers. That means when you call, you're dealing with the person who will actually turn up to do the job. The approach is simple: provide friendly service, clear advice and reliable electrical work delivered on time and on budget.

From small domestic jobs through to commercial installation and maintenance, no job is too small. Whether it's fixing a fault, wiring a new build, or helping plan an efficient setup for your business, Jake brings years of hands-on experience and a genuine commitment to his community.

Available now for all electrical needs.

Call or text Jake on 021 770 123



Jake Fah, Mountain Electrical.

### Electrician

Are you looking for an electrician who:  
- Turns up on time?  
- Keeps his promises?  
- Offers efficient service & sound advice?

**Then call Jake Fah at**



**Mountain Electrical**

REGISTERED ELECTRICIAN  
Ohakune - Raetihi - Rangataua -  
Horopito - National Park - Whanganui

**Ph 021 770 123**

### Builder



### Design & Build Service

Renovations Kitchens Tiling  
Bathrooms Fences Decks  
House repairs & maintenance

**Call Darryl Cooper**

**Ph 021 333 594**

### Earthworks

### HAITANA EARTHWORKS



14 tonne digger  
14 tonne wheel digger  
Tip truck  
Supply of metal,  
scoria and boulders

**Farm work, section &  
driveways, rock walls**

**Ph 027 289 4404**

### Carpet Cleaning



**WANGANUI**

**CARPET & UPHOLSTERY CLEANING**

**24 HOUR FLOOD CALLOUT**

We specialise in stains, odours and hard to  
clean carpets and fabrics.

P.U.R.T - Pet Urine Removal Treatment  
cdwanganui@outlook.co.nz

**www.chemdry.co.nz**

**Wanganui & Ruapehu Regions**

**0800 22 78 22**

### Heat Pumps

**Choose the best heat  
pump designed to heat  
your home**

**Call us for a service and clean  
of your heat pump**



Free quotes. Interest Free Terms available.  
Total 5-year Warranty. Q Card. ohakunetv@xtra.co.nz

**Ohakune TV Electrical**

**Ph 06 385 8700**

### Gib Fixing & Plastering



GIB FIXING & PLASTERING SERVICES  
Reliable. Affordable. High-Quality Finish.

No job too big or small - residential & commercial.  
Skimming • Stopping • Repairs • New Builds •  
Renovations

Call Bryce Cox 021 170 3893  
Email: manawatudrywall@outlook.com

Free quotes • Prompt service • Satisfaction  
guaranteed

**Ph 021 170 3893**

### Property Maintenance / Cleaning



- General Cleaning
- Property Maintenance
- Carpet Cleaning
- Water Blasting Services
- Floor polishing/buffing

For a free no obligation quote call:  
RAY 021 886 509 or MAURICE 021 078 2419  
Or visit: [www.rccpml.co.nz](http://www.rccpml.co.nz)

**021 886509 or 021 0782419**

### Hire

**Why buy it ... hire it!  
TWEEDDALE HIRE**

**NEW LOCATION**

**Next to BP Ohakune**

Open Monday - Friday 8am - 4pm

Saturday 9am - 12pm. Sunday CLOSED

P 027 2799 724 E [ohakunehire@xtra.co.nz](mailto:ohakunehire@xtra.co.nz)

CHECK OUT OUR EXTENSIVE RANGE OF HIRE  
EQUIPMENT. SEE OUR WEBSITE  
**WWW.TWEEDDALE.CO.NZ**



**PARTY HIRE:** floodlights,  
tables & chairs, heaters, spit  
roasters, wheelie bins, chafing  
dishes, crockery & cutlery,  
dehumidifier, flute & wine  
glasses, universal food cooker,  
portaloo & showers, 3-section  
marquee, horse float.

**Marquee Hire**



**FOR THE BIG JOBS:**  
digger hire, cherry pickers,  
pumps, wood splitters,  
generators, car trailers, post  
hole borers, furniture trailer,  
concrete equipment, rollers &  
compactors, portable trencher

**Ph 06 387 5022**

### Landscaping



**EARTHWORKS  
LANDSCAPING**

- Drainage
- 5T/3T Diggers
- Road Roller
- All Concrete Work
- Concrete Cutting

**RICHARD  
FLEURY  
027 241 3412**

**DIPLOMA IN LANDSCAPE DESIGN**

**Ph 027 241 3412**

### Land development

**VERSATILE BOBCATS LTD**

**Bobcat+Truck Hire  
Section clearing  
Driveways Formed**

*For All Your Land Development Requirements*

**Topsoil available**

**Contact Steve Gray Free Quotes**

**Ph 027 685 4854**

### Engineering



- Manufacturing and repairs
- Access equipment hire
- Engineering supplies
- BOC gases
- 20T & 50T crane hire

29 Burns St, Ohakune.

027 473 0188 Mark or 027 444 2058 Bruce

Email: [sales@ohakune-eng.co.nz](mailto:sales@ohakune-eng.co.nz)

**Ph 06 385 8952**



# Suze Redmayne on NCEA move

Local member of Parliament Suze Redmayne reflects on time in the Ruapehu District:

• Parliament is in recess this week and it was fantastic to take the opportunity to get back to the northern parts of the mighty Rangitikei electorate. Monday was a busy day in Taumarunui with visits and meetings.

My first stop on Monday was Taumarunui High School – it was a pleasure to catch up with students, staff and principal John Rautenbach. I appreciated hearing their perspectives on our government’s recent proposal to replace NCEA with new national qualifications.

Nothing sets our young people up for the future like a great education. But NCEA has not been working as well as it should. Engagement has been slipping, and too many parents and students say they don’t understand it. Our new qualifications would be internationally benchmarked and much easier for everyone to understand. You can learn more about our proposal and have your say at [www.education.govt.nz/have-your-say](http://www.education.govt.nz/have-your-say).

Next, I headed to my office in Taumarunui to meet with several local constituents about issues important to them. From water services to roading, it was great to connect with people passionate about their community and determined to make a difference. Listening, advocating and ensuring their voices are heard is what I’m here for.

As always, it was great to catch up with Ruapehu District Council mayor Weston Kirton and chief executive Clive Manley. We talked

through a range of local issues and discussed recent government announcements – including Local Water Done Well and last week’s big announcement on the building consent regime by Hon Chris Penk, Minister for Building and Construction.

The Minister announced significant reforms to the building and construction sector. These include shifting the liability settings to a proportionate liability – under the existing joint and several liability framework, councils and ratepayers can end up covering the full cost for defective building work. He also announced a suite of initiatives that will make it easier for council Building Consent Authorities to group together to voluntarily consolidate their building consent functions and services. Changes aim to create a fairer, more efficient building system, encouraging personal responsibility while safeguarding the interests of homeowners and ratepayers.

My Taumarunui office is open on Mondays and Thursdays from 9:30am to 3:30pm – and despite changes to electorate boundaries, will continue to remain open until the election in 2026 when new boundaries take effect. If you have anything you’d like to discuss, please feel free to drop in and see Kay, or phone her on 07 896 8008. To stay up to date with what’s happening in Rangitikei and Wellington, please follow me on Facebook at [facebook.com/SuzeRedmayneMP](https://facebook.com/SuzeRedmayneMP)

*Authorised by Suze Redmayne Parliament Buildings, Wellington*

# Legend of farm services retires

After nearly two decades of dedicated service to the rural heart of Ruapehu’s farming communities, Bob Smith is hanging up his boots and retiring from AgSpec Services Limited.

For 18 years, Bob has been the face of the company’s boom spraying operations – “a trusted and highly respected operator who built strong relationships across the region through his tireless work ethic, deep local knowledge, and passion for helping farmers thrive,” says the firm’s director Rob Meehan.

“Bob has been more than just an operator – he’s been the backbone of our spraying services,” says Rob.

“His commitment to excellence, even in the toughest conditions, has set the standard for the entire team. We owe him a huge debt of gratitude.

“From the rolling hills of Ruapehu to the outlying districts, Bob’s contribution to the region’s agricultural success has been immense. Whether it was early mornings, late nights, or last-minute callouts, Bob always showed up – with precision, professionalism, and a can-do attitude.

“Bob’s retirement is both a moment of pride and a time of transition. The team at AgSpec – along with the countless farmers he’s supported – wish him all the best as he begins a new chapter. We thank him for the loyalty, the laughter, and the legacy he leaves behind.”



Bob Smith is stepping out of his agriculture spraying truck for his well-earned retirement. Photo: AgSpec.

Experts ~ at your service

Tree & Garden Services

Treeshape Ltd  
Tree & Garden Management

Garden maintenance & landscaping  
Tree care and removal  
Landscape design and installation

Over two decades of experience in commercial and private tree & garden management

Fully qualified and insured

Contact us today for a free consultation or estimate – email [treeshapeltd@gmail.com](mailto:treeshapeltd@gmail.com)

Ph 021 951 962

Digger Hire

13.5 ton digger for hire

• landscpaing  
• drainage - ponds  
• hill country track work  
Anything considered.

40+ year experience in diggers and dozers

Call or text Ivan  
@ Mead Contracting

Ph 027 486 8375

Building Supplies

PlaceMakers®

FOR YOUR BUILDING PROJECT & DIY NEEDS

MON to FRI – 7.30am – 5pm  
SAT 9am –midday

Ph 06-385 8414

Ohakune Landscape Supplies

- Huge range of Pebbles
- Mulch
- Bark
- Pea Straw
- Rail & Mac Sleepers
- Builders mix
- Sand
- Topsoil
- Bagged Garden Fertilisers
- White chip
- Pavers

~ Call to arrange supply ~ FREE loan trailer ~  
~ eftpos available ~  
Email: [Ohakune.landscape@gmail.com](mailto:Ohakune.landscape@gmail.com)

Ph 0800 926 315

Plumber

Plumber Dan  
Plumbing, Drainage,  
Gas & Building

Looking for a dependable local plumber in your area?

Count on our skilful local Ohakune plumber for all your maintenance plumbing requirements. Whether it's a leaking pipe or a blocked drain, we deliver quality service with fair pricing in the Ohakune & surrounding areas.

Don't hesitate, get in touch with us today!  
[office@plumberdan.co.nz](mailto:office@plumberdan.co.nz)

Ph 021 635 517

Note:

Call Jude to book this space for next week.

Only costs ~~\$34.87~~ GST each week for 50 weeks, in colour!

Other options available.

p: 06-385-8532

e: [ads@ruapehubulletin.co.nz](mailto:ads@ruapehubulletin.co.nz)

Auto Services

AUTO SERVICE CENTRE

Repco  
BRIDGESTONE

Authorised Holden Service Centre

Full workshop services for all vehicles, wheel alignments, computer diagnostics, warrant of fitness inspections, parts, batteries, engine oils.

mla

84 Clyde Street, Ohakune  
After hours 027 448 4080  
[autoservicecentre@hotmail.co.nz](mailto:autoservicecentre@hotmail.co.nz)

Ph 06 385 9222

Gas Fitting

Plumbing & Gasfitting

Cut down on your power bill. Go gas hot water & heating – supplied and installed. Call for a consultation.

Phone Denise 027 482 7488 or  
Email [accounts@aplumbingandgas.co.nz](mailto:accounts@aplumbingandgas.co.nz)

Ph 06 343 6866

Upholsterers

Westlorne

• Furniture Upholstery  
• Vehicle Upholstery  
• Tarpaulins • Canvas & Leather  
• Shade sails • Saddlery

Factory, SH49, Tangiwai, Ohakune.  
Mobile 0274-467-289 Fax 06-385-8483  
email: [westlorne@xtra.co.nz](mailto:westlorne@xtra.co.nz)  
[www.westlorne.co.nz](http://www.westlorne.co.nz)

Ph 06 385 8487

Plumbing / Drainlaying

B&M PLUMBING LTD

• Plumbing & Drainlaying  
• Pumps - sales, servicing & installation of all pumps  
• Fires & Solar  
• 5 Ton Digger with Augers, Ditchwitch & Tip Truck

“Your local Registered Certifier”

B&M PLUMBING LIMITED

Call Brian 027 436 1075  
Email: [bmfred@xtra.co.nz](mailto:bmfred@xtra.co.nz)

Master Plumbers  
Representing Excellence

Ph 06 385 4718

Auto Services

RUAPEHU MOTORS

Locally owned and operated by mechanic Daniel Norris.

WOF \$75 car, \$45 trailer

Ruapehu Motors

Cnr Seddon St and Valley Rd, Raetihi.

For enquiries, please phone Daniel

Ph 027 863 7454

Septic Tank Work

Bennett's Septic Tank Cleaning Services

Septic tanks, water tanks, grease traps.

Call us for fast efficient service.

Phone Chris 06-388-0452

Ph 06 388 0452



**FOR SALE**

**TANK SPECIALISTS**, water or septic. Delivered price quoted. Buy direct. Ph 0800-487-633.

**HAVE YOU GOT AN EVENT** you want to tell the community about? Contact us here at the Bulletin on 06-385-8532.

**PUBLIC NOTICES**



**Lyn Neeson for Mayor**

Inclusive Leadership  
Financial Accountability  
Economic Diversity

Please phone if you want a chat  
07 896 7659

Authorised by Lyn Neeson

**PUBLIC NOTICES**

**Section 101, Sale and Supply of Alcohol Act 2012**

**Ohakune Brewers Ltd** have made an application to the District Licensing Committee at Ruapehu District Council for the **Variation of an On Licence** in respect of the premises situated at **17 Goldfinch Street, Ohakune** known as **Big Mountain Mead, Big Mountain Burgers. The Variation of Conditions refers to the following: That the licenced area be extended to include the adjacent site formerly occupied by Kombi Coffee.**

The general nature of the business to be conducted under the licence is that of a **Tavern**. The days on which and the hours during which alcohol is intended to be sold under the licence are: **Wednesday to Sunday: 10.00am – 10.00pm**

The application may inspected during ordinary office hours at the office of the Ruapehu District Licensing Committee at Ruapehu District Council, 59-63 Huia Street, Taumarunui.

Any person who is entitled to object and who wishes to object to the issue of the licence may, not later than 25 working days after the date of the publication of this notice, file a notice in writing of the objection with the Secretary of the District Licensing Committee at Ruapehu District Council, Private Bag 1001, Taumarunui 3946.

No objections to the renewal of a licence may be made in relation to a matter other than a matter specified in section 131 of the Sale and Supply of Alcohol Act 2012. This is the second publication of this notice. The first notice was published on 20 August 2025.

**BUSINESS NOTICES**

**Ohakune Health Hub**

**In pain? Let us help.**

Experienced care in Osteopathy, Physiotherapy, Massage and Acupuncture – effective treatment for:  
- Musculoskeletal pain - headaches & concussion - post-operative recovery - and much more.

**ACC registered | 77–79 Clyde St, Ohakune**  
**Book online: [www.ohakuneosteo.co.nz](http://www.ohakuneosteo.co.nz)**



**Ruapehu Mayor Weston Kirton**

To arrange a meeting or call back, please phone Council on 06 385 8364 or email: [kay.kidd@ruapehudc.govt.nz](mailto:kay.kidd@ruapehudc.govt.nz)



**PUBLIC NOTICES**

**Ruapehu District Council**  
**Te Kaunihera-ā-Rohe o Ruapehu**  
**Boards and Committees**  
**UPCOMING MEETING DATES**



Agendas are published on our 'Meetings this Month' page ([ruapehudc.govt.nz](http://ruapehudc.govt.nz)) two working days before each scheduled meeting.  
To speak at our Public Forum and share your thoughts directly with Elected Members, please contact our Governance team at [governance@ruapehudc.govt.nz](mailto:governance@ruapehudc.govt.nz).

**Risk & Assurance Committee**

10AM, Monday 1 September 2025  
Online

**MEETING CONTACTS**

<b>Ruapehu District Council</b>	07 895 8188
<b>Taumarunui-Ōhura Community Board</b>	
Luke Pepper, Chairperson	027 329 2849
<b>Ōwhango-National Park Community Board</b>	
Anthony Gurr, Chairperson	021 487 742
<b>Waimarino-Waiouru Community Board</b>	
John (Luigi) Hotter, Chairperson	027 274 2616
<b>Risk &amp; Assurance Committee</b>	
Philip Jones, Chairperson	027 499 9408



*The Royal Theatre, Raetihi*  
Community Entertainment

23 Seddon Street  
Raetihi 4632

**Come and see the theatre & Notice of Annual General Meeting**

Theatre Royal (Waimarino) Charitable Trust  
Saturday 30 August 2025 at 4.00pm  
Being held at The Royal Theatre, Raetihi  
23 Seddon Street, Raetihi

The trust welcomes all to come and see the newly refurbished auditorium at the theatre and our vision for the future, the theatre will open at 3.00pm for viewing  
**AGM at 4.00pm**

**Agenda**

Welcome / Karakia  
Apologies  
Acceptance of 2024 minutes  
Matters arising  
Financial report / Draft  
Matters arising from the financial report  
Acceptance of financial statement  
Chairpersons report  
Matters arising  
Vision / Direction of the theatre  
New Trustees. Committee members  
Election of Officers, Chairperson, Treasurer, Secretary.  
Any other business  
Meeting close  
Anyone wanting any information on becoming a trustee, committee member or volunteer  
Please email to [theatreroyalraetihi@gmail.com](mailto:theatreroyalraetihi@gmail.com)  
or call the number below.  
Contact Gary on 021 319968

**PUBLIC NOTICES**

**MEETINGS**

The following meetings of Horizons Regional Council (Livestreamed) will be held during September 2025 in the Tararua Room, Regional House, 11-15 Victoria Avenue, Palmerston North, unless otherwise advised:

**Monday, 1 September**  
1.30pm Climate Action Joint Committee

**Tuesday, 2 September**  
11.00am Regional Transport Committee

**Tuesday, 9 September**  
10.00am Strategy & Policy Committee

**Wednesday, 30 September**  
1.00pm Regional Council

Should Members of the public wish to speak at Meetings, they are advised to phone 0508 800 800.

M J McCartney  
**CHIEF EXECUTIVE**



[horizons.govt.nz](http://horizons.govt.nz)



**PUBLIC NOTICES**

**Section 101, Sale and Supply of Alcohol Act 2012**

**Silverstone Lodge Limited** has made an application to the District Licensing Committee at Ruapehu District Council for the **issue of an On Licence** in respect of the premises situated at **51 Carroll Street, Waimarino** known as **Silverstone Lodge**. The general nature of the business to be conducted under the licence is that of a **Hotel**. The days on which and the hours during which alcohol is intended to be sold under the licence are:

**Monday to Sunday 8.00am – 11.00pm**

The application may be inspected during ordinary office hours at the office of the Ruapehu District Licensing Committee at Ruapehu District Council, 59-63 Huia Street, Taumarunui.

Any person who is entitled to object and who wishes to object to the issue of the licence may, not later than 25 working days after the date of the publication of this notice, file a notice in writing of the objection with the Secretary of the District Licensing Committee at Ruapehu District Council, Private Bag 1001, Taumarunui 3946.

No objections to the issue of a licence may be made in relation to a matter other than a matter specified in section 105(1) of the Sale and Supply of Alcohol Act 2012. This is the first publication of this notice.

**SITUATIONS VACANT**



**WE'RE HIRING: Lead Boom Spraying Operator**

AgSpec Services is now looking for a dedicated boom spraying operator to take the lead in this crucial sector of our rural contracting business.

We want someone who shares our values of:

- A can-do attitude
- Responsiveness to farmers' needs
- Strong work ethic and initiative
- Experience preferred however training offered

This is a chance to join a trusted name in the region and play a leading role in supporting the rural economy.

Think you've got what it takes?  
Contact Rob on 027 224 7732  
Email your CV to [agspec1@hotmail.com](mailto:agspec1@hotmail.com)

**PUBLIC NOTICES**



**WAIMARINO SHEARS**  
**NOTICE OF AGM**  
**Hui ā Tau**

Thursday 25 September 2025 6pm  
Raetihi Marae, 48 Ohakune Raetihi Rd, RAETIHI

**AGENDA**

1. Minutes of the previous meeting/s
2. Presidents report
3. Finance report
4. Appointment of financial review or auditor
5. Election of committee members
6. General business
7. Amendments to society constitution

Nomination forms and amendments to the society constitution are available on request to the Secretary, Vivienne Hoeta via email [waimarinoshears@gmail.com](mailto:waimarinoshears@gmail.com).



Anei te reo pōwhiri ki tatou mo te Hui ā Tau o te marae.

The Raetihi Marae Trust invites all whānau to attend the 2025 Hui-ā-Tau.

**Raetihi Marae**  
**Hui ā Tau (AGM)**

Saturday 27 September 2025

1pm in Wharepuni - Kote Whakaarotahi Kite Whakapono

**AGENDA**

1. Whakamoemiti
2. Apologies
3. Raetihi Marae Pūrongo ā Tau – Raetihi Marae Trust annual report
4. Raetihi Marae financial report
5. Raetihi Marae strategic work plans
6. Minutes of previous Hui ā Tau
7. Election of trustees - 2x Iwi wide seats and 1x whānau seat (Hinekaihinu Te Poria)
8. Amendments to charter (if any)
9. General business
10. Whakamoemiti

For further information or to send your tono aroha - apologies please contact:

**Brendon Morgan (Chairman)**  
[raetihimaraeinfo@gmail.com](mailto:raetihimaraeinfo@gmail.com)

**For everything Ohakune, visit**

**WWW.**  
**ohakune.info**



Winter art on show

Get wild at work, says DOC

The 2025 Winter Art Exhibition is underway at locations around Ohakune as well as at Tūroa.

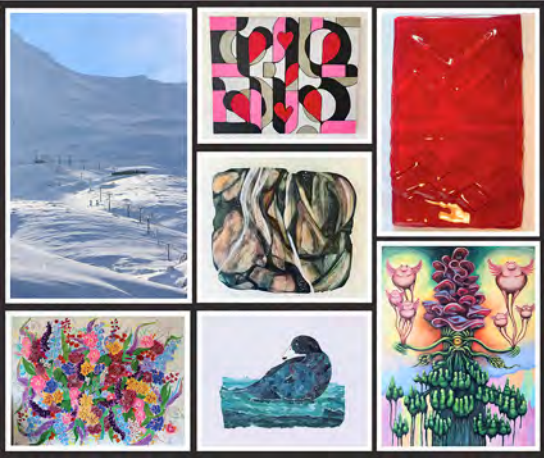
Since its inception in 1995, the Exhibition has displayed various art forms from around the Ruapehu district and some of these artists are now world famous.

The exhibits are at Frank's Café, La Pizzeria, The Kitchen, Opus Fresh and Freddie's Cafe at Tūroa.

"We would like to acknowledge and thank all of this year's artists for submitting their creative work: Tania Greenfield, Kate Hartmann, Leah Stuckey, Helen Gordon aka H'ART, Red Hot Glass – Kate Cornwall, Haly Melanson, Suraya Hollands and Megan Arden, all of whom are based in the Ruapehu District or have a connection to the maunga" says organiser Jude Chevin.

All art pieces are available for sale and available at the end of the Exhibition.

The exhibition set to run until 7 September.



Restoration planting at Ngā Roto-o-Rangataua Scenic Reserve is one of the local activities for Conservation Week. Photo: Liz Brooker.

SUNBEAM LODGE

licensed restaurant & cocktail bar

Phone 58470 Ohakune

WAIMARINO BULLETIN

VOICE OF THE RUAPEHU REGION

Tuesday 27 August, 1985. Volume 3 No. 14

JUNCTION SKI SHOP

We are your ski professionals.

\*SKI HIRE\*SKI SALES\*SKI REPAIRS\*

P.O. BOX 21 OHAKUNE JUNCTION PHONE 53361

COUNTY HOPES FOR CHANGE OF ATTITUDE

Waimarino County Council decided at last Thursday's meeting that there has to be a change in attitude from the Ohakune Borough Council if the proposed amalgamation with the three councils within the Waimarino County is going to work.

The Ohakune Borough Council came under fire from county members for deciding there would be 'no second choice' on the issue of having a district council and not a ward system.

Cr John Martin was critical of the Ohakune Council saying "I do not want to be party to a council that will have no second choice."

However Cr Malcolm Whale said he believed the council should remain in an unbiased position and go into the amalgamation talks positively with an open mind. "Hopefully there will be a change in attitude and commonsense will prevail," said council chairman Bruce Berry.

Councillors Berry, Whale and Gavin Jones were elected to form the sub-committee to meet with the other two authorities. Cr Martin and Bennett declined nomination onto the committee.

\*\*\*

The council is to make an application to the Sports and Recreation fund for facilities at Ruatiti Domain, north of Raetihi.

Facilities at the Ruatiti Domain will be undertaken by council by the end of the year.

The county will supply a changing shed, suitable fireplaces, a new pit toilet to replace the old one at the camping area, rubbish bins and grass seed for the area, which will be rotary hoed and levelled at the picnic area.

It is anticipated that Rotary will also be of assistance in the development of facilities.

Fifty kowhai trees are being supplied by the Internal Affairs Department Wildlife Service to help beautify Ruatiti.



National Park School opened 60 years ago

National Park School celebrated its 60th birthday on Wednesday 21 August with a festival of performing arts (see page 21). This photograph records the official opening of the Waimarino School, as it was known then, in 1925.

Re-union of former Waimarino residents held in Waikato

A reunion of 250 former residents of the Waimarino was held last weekend in Hamilton.

The get-together was attended mainly by those now living in the Waikato, but some came from as far afield as Auckland to the north and Napier and Gisborne to the south, as well as one couple from Ohakune, Pat and Elaine Goldfinch.

Organisation and finance for the reunion came from former residents, Frances (nee Lane) and Tony Donnelly, June (nee Powell) and Jack McNie and Helen (nee Cleary) and Eric Warner.

Mr Warner says many of those attending had not lived in the Waimarino for 60 years.

Two of the oldest people there were twins, Mrs Bickford and Mrs Harvey (nee Herkt) who are believed to be over 80. They lived in Horopito when it was a thriving township, then moved to Ohakune for a time.

The reunion was held at the Claudelands Showgrounds from 6pm Saturday until 1am. The evening began with a dinner followed by a dance. The accompanying band used to be known as the Raetihi Dance Band. Members included Joy Bougen — who was a very prominent pianist in her day — John Awburn and Lance Wise.

Toasts were given by John McCullough whose father was former headmaster of Ruapehu College. He congratulated the caterers for the outstanding meal, with his only criticism being that there were no swedes, carrots or brussel sprouts on the menu. Former Ohakune Mayor John Gould spoke on the Waimarino and life there.

A set of photos of many of the people of the Waimarino was on display at the reunion.

Mr Warner says he is hoping to write a book about the reunion, a copy of which will be given to the Raetihi Museum.

Profits from the evening will go towards a scanner for the Waikato Hospital.

SKIFIELD SURVEY

Bruce Jefferies, chief ranger at Tongariro National Park Headquarters in Whakapapa Village, asks for the return of completed questionnaires from those people who have been asked to help with the Whakapapa Skifield Survey.

"The response so far has been fairly disappointing but we must get more completed questionnaires in to get a truly representative range of views about the future management of the Whakapapa Skifield," he said last week.

Completed questionnaires should be placed in one of the collection boxes located on the skifield or along the Bruce Road.

PHOTOGENIC FOCAL POINT



Twenty-one students studying marketing communication at the Wellington Polytechnic School of Design were in the Waimarino last week to research the problems of 'selling Ohakune' as an all-year round resort. What better place to meet and start their research programme than Ohakune's Giant Carrot.

**Please!**

After search and rescue teams at Whakapapa have been put on stand-by six times in the last week responding to false alarms, Park ranger, Paul Dale is asking people to let others know of their intentions while on the mountain and is urging them to keep to their plans.

Mr Dale says a lot of unnecessary time has been spent on looking for people who are in fact safe at home, in the village or in the pub.

"People are not aware of the potential hazardous conditions on the mountain," says Mr Dale so they do not make or keep to their plans.

MOBILE CURTAIN SHOWROOM

Our mobile curtain showroom and experienced home consultant Mrs Dixie Ander is regularly in your area. For a completely free of charge and no obligation visit contact Wanganui 57-778 (collect) or the Raetihi Hotel 54-016. We can advise on all aspects of home decoration, all our work is guaranteed and remember to enquire about our special offers on all customer orders.

PHONE NOW FOR AN APPOINTMENT

Home Pride

148 Guyton St, Wanganui

Open Saturday Mornings

It's Conservation Week starting on Monday and the Department of Conservation is urging people to "branch out from business as usual" and inviting workplaces across Aotearoa to "leaf" their desks behind and take action for nature.

"With more than 4000 of our native species at risk, the time to step up (and maybe step outside) is now," says Sia Aston DOC deputy director-general public affairs.

"And don't worry, we're not asking for a full-blown forest restoration. Even small actions can make a tremendous difference."

Led by DOC, this year's theme 'Take action for nature' is a call for workplaces to support New Zealand's unique biodiversity and improve the wellbeing of their teams at the same time.

"Connecting with nature isn't just good for the environment, it's proven to benefit mental health, reduce stress, and increase productivity and creativity in the workplace," says Aston.

"Spending even a short time in nature can lift moods, improve focus, and help teams feel more connected. When businesses take action for nature, they're also investing in their people."

"Whether it's a walking meeting, a beach clean-up, a lunchtime quiz, or learning to identify native birds, Conservation Week activities are designed to boost both nature and workplace wellbeing."

DOC has created a Conservation Week kete (basket) full of ready-to-go resources to help businesses plan, promote and share their involvement.

Workplaces are encouraged to choose one or more easy activities and share photos or videos on social media demonstrating how their business is taking action for nature.

Activities include: Daily nature quiz – test your team's knowledge with a new question each day; Walking meetings – turn team catchups into nature-connected strolls; outdoors clean-ups – help your local environment and enjoy a day out; bird ID online course – learn to recognise native birds by sight and sound; Fiordland kiwi diaries screening – relax over lunch with a dose of kiwi magic.

Locally, a clean-up could be carried out on one of the many local walks – the Makotuku Walkway in Raetihi, the Mangawhero River Track; Rangataua Lakes; Lakes Reserve; Fishers Track; Whakapapa Scenic Reserve. Or perhaps around the ski areas.

**Local activities**

DOC Tongariro is running a series of Conservation week activities.

Restoration Planting: Friday 5 September 10.30am–12.30pm Ngā Roto-o-Rangataua Scenic Reserve. Ngāti Rangi, Te Pae Ao Joint Management Committee and Transpower NZ invite the community to join them for a morning of restoration planting along the Makaranui awa.

Trap & Chat: Wednesday 3 September 9–11am, Mangawhero Forest Walk, Ohakune. Join DOC Tongariro rangers on the Mangawhero Forest Walk for a morning stroll to chat about all things trapping. Whether you've got knowledge to share, questions to ask, or are just curious to give trap setting a go, we'd love to have you join us.

Ngahere at Night: Bats & Bugs. Tuesday 2 September 6.30–8pm, Ōwhango Pavilion, Okioi Road, Ōwhango. Join DOC at the Ōwhango Pavilion to hear about some of Aotearoa's fascinating nocturnal creatures. As night falls, learn how to use bat-boxes to hear if any pekapeka (long-tailed bats) are out for the evening, and switch on torches to look for bugs that come alive in the dark. Explore the nightlife of the ngahere in a relaxed, family-friendly setting.





Ruapehu United – enjoying success in their first season.



## The PGG Wrightson Ohakune store is on the move

From Thursday, 28 August 2025, we will be located at 3 Burns Street, Ohakune.

Phone: 06 385 8500

## School on the Sky Waka

Eye on Ruapehu College, contributed by staff and students

Whakapapa's Sky Waka was a classroom for Ruapehu College Level 2 and 3 tourism students recently, where they investigated the gondola as a tourist attraction.

Whakapapa safety and ski patrol lead Andy Hoyle spent time with the students to discuss many of their questions about the attraction, such as: how much did it cost? About \$25 million; How does the summer revenue compare to the winter revenue generated by the gondola? It works out to about the same. Are the tourists mostly domestic or international? Both.

And the best part is that everyone now has access to the upper reaches of the mountain – from a two-week-old baby to an elderly person, including those who are wheelchair bound.

"Everyone gets up to the snow and experiences one of Aotearoa's most beautiful views."

### Sports exchange

Ruapehu College welcomed Taumarunui High School for a full day of sport and school spirit on 14 August. Students competed in netball, rugby, football, and squash, with strong performances from both sides. The day showcased commitment, teamwork and great sportsmanship, with games played in a fair but competitive spirit.

Beyond the scoreboard, students connected and enjoyed the positive atmosphere accompanied by great weather and strong supporter turnout. The event ran smoothly thanks to the efforts of staff, coaches, and volunteers.

### Sports results

Results: Girls rugby finals: Whanganui High school vs Ruapehu College, score: 51-10 to Whanganui High School. Netball SS1 finals: Kokohuia A2 vs Ruapehu College A, score: 41-19 to Ruapehu College - 5th place. Netball SS2 finals: Whanganui High School JA2 vs Ruapehu College, score: 21-15 to Ruapehu College - 5th place.

### Football

This year has been the first season that there has been a Ruapehu college team entered into the Senior Secondary School

football league held in Whanganui. Under the banner of Ruapehu United, the college team has had a phenomenal season and with only two weeks left they have the league title firmly in their sights.

A win this week against Castlecliff Cullinane would give the team the best record in the league, with a record of 10 wins and 2 losses, putting them ahead of Cullinane at 9 wins and 3 losses (all 3 losses are to Ruapehu). A win the following week against Whanganui Athletic Rangatahi would clinch the title.

"When you consider that the team's first game was a 5-2 loss to Whanganui Collegiate 2nd XI, it highlights how much the team has grown in skill and in confidence over the course of the season," says coach Luke Paynter.

"Every week the focus has been on getting a little bit better for when they play for Ruapehu College in the Trident Tournament in Wellington from 25-29 August. The improvement has been noticeable as they have taken the league by storm, scoring 70 goals so far and conceding only 22."

In addition to this success, there have been reasons to celebrate in other leagues as well. Wren Drayton also plays for Whanganui Athletic in the afternoon after having played for Ruapehu United in the morning for their men's Lions and Reserves team.

Last Sunday was the trophy presentation for the Whanganui Athletic Reserves as they took out the Central Football Horizons league.

"Huge congratulations to Wren on his effort with the Reserves and for a well-deserved league title," says Paynter.

"What has been most impressive about this team is how they have responded to their losses this season. Not once has the blame been laid at the feet of the referee for a missed call, or at another teammate for making a mistake.

"Every loss has been met with the same question: What can we do better so that the result is different next week? This kind of maturity, team unity and level headedness shows that kind of character that the people in this team possess."



School on high: from left, Karaitiana Horne, Andy Hoyle and Paretuarangi Wilson.

**True Team Promise means our whole team works for you.**  
Contact your local Ohakune Consultant today!



**Cameron Elliot**  
Sales Manager – Taumarunui / Ohakune  
027 542 1009



**Alan Blackburn**  
Rural / Lifestyle  
027 203 9112



**Polly Ingles**  
Residential / Lifestyle  
027 315 8368



**Jenna Hovell**  
Residential / Lifestyle  
027 361 0167



**Jody Milham**  
Residential / Lifestyle  
020 426 4322



**Mere Haitana**  
Branch Administrator  
06 385 4466

Scan the QR code to find us on Facebook



**Property Brokers**

Proud to be here

pb.co.nz  
Property Brokers Ltd Licensed REAA 2008 | Q022738