

HORNE

BROS

Registered

mb

Member Building

Builder

Joiners

Glaziers

• Building/Alterations

• Glass

• Joinery

• Kitchens

• Design Work

• Concrete Cutting

• Automotive Glass

Old Station Road, Ohakune. Phone 06-385-8444



**NIPS
is
back
P2**



**Fire
fighters
head for
heights
P3**



**Daffodil
Day
does
well
P5**



**Army
reservist
'enjoys'
Waiouru
P7**

Theatre threat: lack of trustee interest

Will the Royal Theatre close after 110 years? That question has been put to the community after a disappointing turnout on the weekend.

On Saturday 30 August the Royal Theatre in Raetihi opened its doors for those interested to go along and have a look at all the work that has been done, culminating with the recent completion of the auditorium.

With insulation and a royal blue colour scheme, it is warmer and has a warm feeling too, says Gary Griffin-Chappel, chair of the Theatre Royal (Waimarino) Charitable Trust.

"Regrettably though, other than Bruce Thompson, a previous owner of the theatre, no one went along."

At 4pm on Saturday the AGM was scheduled but with only two trustees attending, it had to be postponed as the trust deed requires a quorum of four to attend.

The rescheduled day is Thursday 4 September at 7pm, again at the theatre.

"Without sufficient trustees the trust and therefore the theatre may well close. With all the work that has been done in the last two years that will be an awful shame," says Griffin-Chappel.

"So many people who have attended events have said how much they enjoy the theatre and the memories it holds, so it will be a shame if that happens."

After looking around the refurbished auditorium, Thompson said the people of this area need to understand what a wonderful asset they have and come along and support it.

Griffin-Chappel said "after all the hard work to upgrade the decor and make it a warmer more comfortable

Turn to Page 4



Jess Hotter in action at The Remarkables Freeride competition, where she won first place in the North Face Frontier 2-Star event on Sunday 24 August. Photos: NZ Snow Sports.

Hotter 'pretty stoked' with title-winning run

Ohakune skier Jess Hotter was the best of the New Zealand athletes at the second day of the Freeride World Tour Qualifier event at The Remarkables recently.

Hotter won the women's ski title at the North Face Frontier 2-star event on Sunday.

She had finished third in the 4-star competition the previous day.

Judges rewarded her for confident skiing and showing excellent technique and control. After she hit a cliff feature that no-one else had tackled that day, commentators referred to the "Jess Hotter cliff" for the rest of the competition.

"I'm pretty stoked with how my run went, all in all," Hotter said.

"It's hard to get through the rocks to where you want to go at the moment, but

I managed to do everything I wanted to in my run so I'm happy."

British skier Harriet Lucas, the 4-star winner, again demonstrated aggressive technique and impressed the judges when she hit a mandatory drop in the top chute straight on, finishing second.

Spain's Carmela Olmo was third.

Last year, she won the Standout Female Skier Of The Year award, for her role in the freeskiing movie *Beyond*.

In 2022, the extreme skier won the women's Freeride World Tour trophy. She started freeride skiing in 2018,

In 2022, the extreme skier won the women's Freeride World Tour trophy.

The Remarkables win brings her full circle – the skifield being where she started freeride skiing in 2018,



Discover the Ruapehu region with Bayleys Real Estate.

What do we have that makes us truly unique? We have a culture of togetherness and of connectedness. It's what makes Bayleys, Bayleys. Bayleys is Altogether Better. If you are thinking about buying or selling, contact us today.

BAYLEYS ALTOGETHER BETTER

Bayleys Ruapehu

16 Goldfinch Street | 06 385 0170
bayleys.co.nz/ruapehu

BARTLEY REAL ESTATE LTD, BAYLEYS, LICENSED UNDER THE REA ACT 2008

Residential / Lifestyle / Commercial / Rural

SECRET GARDEN
presents
POTATO AND
PINT FESTIVAL
from pm



6 SEPTEMBER
4 THAMES ST OHAKUNE
behind The Kitchen
ohakunejunction.co.nz

SECRET GARDEN

NIPS carving pathways: a welcome return



Primary and Intermediate school skiers raced again at Whakapapa last week. Photo: Tahlia Frew.

Last week saw the return of the North Island Primary and Intermediate School Champs at Whakapapa Ski Field. National Park School took the win for the Year 1-4 Rohe School division, while Hilltop School from Taupō topped the Year 5-6 local division.

CEO of WHL, Travis Donoghue, says they were pleased with the turnout of 161 entries from around 30 schools after a six-year gap.

with 72 students competing.”

Schools that made their mark

Through the 1990s and early 2000s, Ohakune Primary and National Park School often dominated the results. In 1999, Ohakune Primary placed first and, on invitation, went on to compete at the secondary school event, beating 64 of the 65 college teams.

Terry relocated to Levin in 1995 but stayed heavily involved until his return in 2004. From 1995 the event was taken on by Sport Whanganui with Kath Campbell at the forefront for a number of years. Campbell says it was a great way to progress tamariki into secondary school competition.

“It was always around the idea of having a go and participating. You didn’t have to be a great skier to take part. I don’t want to take away from the accolades of success but all those kids were winners. So many had never even been through gates before. It’s so fantastic that it’s back.”

Growing into the biggest event

The event kept growing, with schools from around the country sending teams to the slopes. By 2014, it had become the largest alpine event in the southern hemisphere with 900 kids competing. What began on the Staircase as a multi-day event later shifted to the Valley and became a two-week competition.

An offshoot was run for local rohe schools by Hilltop School, which has since been amalgamated back into the main event.

Over the years, some critics have argued that some of the affluent Auckland schools, who send students to train in the South Island, have an advantage. Others point out that local kids, living close to the mountain, enjoy easier access. But as one parent on the sidelines said, “It’s about the kids having fun and building their confidence.”

That sentiment is shared by former Freeride World Tour champion Jess Hotter, who had her first taste of competition at NIPS in Year 5.

“I definitely remember the vibes and the people more than the races themselves,” Hotter says.

Turn to Page 3

Ruapehu Events
& What’s On

SEPTEMBER 2025

Junction Winterfest23 August - 6 September
Winter Art Exhibition, TASCi Fundraiser, NZ Mountain Film Festival and much more. Ohakunejunction.co.nz

Potato & Pint Festival6 September
@ The Secret Garden. See Ohakunejunction.co.nz for details.

James Bond, From Russia with Love6 September

2001: A Space Odyssey13 September

Butch Cassidy and the Sundance Kid20 September

The Sound of Music27 September
Full details on the Theatre Facebook www.facebook.com/royal.raetihi

Girls Who Shred6 September
Visit www.pureturoa.nz or on Facebook/Instagram @turoa.nz for up to date information.

Pond Skim - Whakapapa13 September
More on this event at www.whakapapa.com

NI Secondary Schools Champs15-17 September
Visit www.nissc.nz or Facebook North Island Primary & Secondary School Snowboard & Ski Competition. Email haigsnowboard@gmail.com or nissc.snowsports@gmail.com

Ruapehu Art Awards17 September - 1 October
www.ruapehuartawards.com

Tight Tight Tight19 September
The Royal Theatre in Raetihi.

Bev Hiscox Spring Flower Show20 September
Enquiries to Di Rout 021 657 343

Retro Day27 September
The Kitchen, 4 Thames St, Ohakune Junction. See Facebook page for details. #RETRODAYOHAKUNE or ohakunejunction.co.nz

For all your ski board and bike rental needs



Ski, Board & Bike
Cnr Ayr St & Goldfinch St, Ohakune
06-385-8433 tcb.nz

FOR MORE DETAILS, GO TO
OHAKUNE.INFO or RUAPEHUNOW.CO.NZ

IT’S FREE TO LIST SO PLEASE LET US KNOW IF YOU
HAVE AN EVENT COMING UP ...
ADS@RUAPEHUBULLETIN.CO.NZ
LINK YOUR EVENT TO EVENTFINDA FOR FREE

Eating out in the
Ruapehu District

Call 06 385 8532 to list your business here

KINGS BAR & RESTAURANT

3 Rimu St Ohakune Junction Ph: 06 385 8648

Est in 1913, historic Kings offers an inviting menu by international chefs, a great selection of boutique wines and craft breweries including award winning Ruapehu Brewing Co beers in the fridge and on tap. See our Facebook page for what’s on. Please check our open times as these will vary.

LA PIZZERIA

6 Thames St, Ohakune Junction Ph: 06 385 8558

Ohakune’s most famous pizza restaurant, for over 37 years we have been serving Ohakune’s best pizza. Come up and see us in the "Junction" at the end of the Old Coach Road and try one of our hot, tasty, handmade pizzas. Same great menu available for takeaway. Open 7 days, 4 – late. Check us out online at: www.lapizzeria.co.nz

LKNZ LODGE & CAFE

1 Rata St, Ohakune Ph: 027 257 LKNZ (5569)

Open every day. Menu includes our delicious big breakfast, creamy mushrooms, homemade soups, wedges, nachos, toasties, waffles and more ... Volcanic coffee, muffins & scones, real fruit smoothies and thick shakes. Dine in or takeaway. Onsite parking. www.lknz.co.nz

POWDERKEG

Bottom of the mountain road Ph: 06 385 8888

For over 35 years, The Powderkeg has been serving up exceptional food and service in a warm, welcoming atmosphere. Whether you’re enjoying a sunny afternoon on our spacious balcony or indulging in our weekly specials like Sushi Fridays and Smokehouse Sundays, there’s always something to look forward to. Join us for an unforgettable dining experience and follow us on Instagram @powderkegbar for the latest updates and mouthwatering offers! Open 7am till late daily.

THE GYPRUS TREE

79 Clyde St, Ohakune Ph: 06 385 8857

Check out our new menu. Kiwi craft beers, boutique wines and cocktails to quench that thirst. Playroom for the kids, fozzeball, air hockey and species to keep the kids entertained. Spectacular mountain views. A great place for casual get togethers or special occasions. Open every day.

UTOPIA CAFÉ

47 Clyde St, Ohakune Ph: 06 385 9120

Open 7 days from 8am – 3pm for all day breakfast and lunch. NOW SERVING HAVANA COFFEE. A cosy memorable atmosphere with a great range of cabinet food and beverages, Frappé and smoothies. Vegan/Gluten-free options for both savoury and sweet are available. Speedy free Wi-Fi! A perfect place for everybody!

ALZHEIMERS
NEW ZEALAND

Alzheimers Whanganui

Services in the Waimarino

- Do you need to speak to someone about concerns with cognitive issues
- Do you need the support of someone who understands dementia
- Are you caring for someone with dementia
- Do you just require some information about dementia

Our Support Coordinator will be in Raetihi
Wednesday 24 September 2025
10.30am - 12.00pm

If you would like to make an appointment
Please contact Mary: Ph 022 694 4978

2 • RUAPEHU BULLETIN 3 September 2025

Fire trainees head for heights



Volunteer fire fighters practice safe use of ladders at a course in Ohakune.

Trainee volunteer fire fighters from around the central North Island converged on Ohakune recently, to learn about safe use of ladders, among other skills.

Thirteen volunteers from brigades from Hunterville, Mangaweka, Taihape, Ohakune, Raetihi, Taumarunui and Manunui took part, with five trainers – from Whanganui, Manunui and Mangaweka, plus volunteer support office Marty Webb, based in Ohakune.

Trainer Rohan Kui (ex-Raetihi resident) explained that the Saturday course was held to bring the volunteers up to speed

on a number of skills, before they head to the North Island week-long fire fighters course in Rotorua.

As well as the ladder training – on ladders up to 10 metres – they worked on hose running, using breathing apparatus and search and rescue skills.

These lessons will be reinforced through each brigade's weekly training nights.

The trainees were split almost 50-50 men and women and included a range of backgrounds including students, a business owner and a truck driver.

NIPS carving pathways

From Page 2

"It was a great opportunity to meet other kids and compete in friendly competition. I became really close with the other kids on the team and really looked up to a lot of them. I specifically remember getting our photo taken in front of the Knoll Ridge Café in our orange and black jackets and listening to Maroon 5 in Mum's Pajero when we carpooled over with Pip and Morgan Couch."

She says the event helped shape her future in competitive skiing.

"It literally was the first competition I did. After that I got into the Tūroa Ski Team and started doing NISSC as well. It was definitely the gateway that opened up all these opportunities, which was super cool and made me realise I like to be competitive and push myself. It's not necessarily about competing against other people, it's about trying to be the best you can be.

"It's not about tearing others down, it's about trying to push yourself up. I don't think I'd be here if I didn't start with that."

Her message to tamariki considering entering is simple: give it a go.

"There's no harm in trying and you'll find out a lot about yourself. Competition brings out great traits in people and creates strong camaraderie with others. I still remember competing in the Mini-X Games at Whakapapa against my mate Christina, who is still a really good friend. Skiing has brought so many beautiful people into my life and that's something I'd love to see for others too. To meet awesome people, build a healthy relationship with the outdoors, and just have fun."

Looking ahead

NIPS will be back again next year, with the Whakapapa team saying they are excited to make it bigger and better.

Power trust gives out \$1.65m

The King Country Trust recently marked its 31st Annual General Meeting "with a strong message of success and community support".

A full house of consumer beneficiaries joined the event, reflecting the strong connection between the Trust and the people it serves.

Trust chair, Uwe Kroll, shared the highlights of a year of excellent investment performance and responsible stewardship, noting that the Trust's results have created real benefits for local consumers.

Thanks to this success, the Trust has announced a record distribution of \$1.65 Million to 10,290 consumers across the Trust Deed defined district. Each consumer account will receive a \$160 credit, which will appear automatically on their next power account from September 2025.

"This distribution is about more than numbers on a page," said Kroll.

"It's about giving back to the people of King Country and ensuring that the benefits of the Trust are felt directly in households across our region."

Alongside Kroll, the Trust is governed by trustees Jo Bransgrove, Adie Doyle and Sandra Greenslade, who also represents the Trust on the Maru Energy Trust.



Power trust chair Uwe Kroll.

Are you happy with the way the Ruapehu District Council is run?

*21.60% rate rise over the last 3 years
*24.75% rate rise over the next 3 years (46.35% over 6 years)
*\$64,000,000 debt and rising
*\$700,000 overspend, still not explained

All the above under the watchful eye of Mayoral candidates Kirton/Neeson/Chase and their predecessors with no accountability.



IT IS TIME FOR A CHANGE

A VOTE for
GRANT LETHBORG for MAYOR
is a VOTE FOR

- responsible fiscal management of your money
- strong leadership
- accountability
- full transparency
- ANSWERS!

I AM ONE OF US

Authorised by Grant Lethborg info@owhangoadventures.co.nz

RTB HELI LTD

FOR ALL YOUR HELI REQUIREMENTS

Whanganui | Taihape | Raetihi - Servicing central & lower North Island

✓ Spraying ✓ Fert ✓ Culling ✓ Seeding ✓ Burn offs ✓ Lifting

CALL STEVE

027 274 8712

www.rtbheli.co.nz



GIVE STEVE A CALL TO SORT YOUR WINTER SPRAYING

Letters

Sacred place

• Over my long history with Ruapehu, I've seen more than a few steps backward.

Tūroa has lost its two best ski lifts, and Whakapapa's had a huge new lift poorly placed.

Apparently, our iwi seems to be trying to shut the doors of this sacred church.

I have been with many thousands on the sacred Fujiyama, to greet Hinomaru, the Rising Sun, and have enjoyed the 12 chairlifts skiing on Parnassos, home of all the Greek Gods.

Why do iwi seek to bolt closed the cathedral's doors?

Surely our sacred places should stay open to all?

We are all entitled to visit this paradise. Why not a gondola from Ohakune Junction to meet the lifts of Tūroa? So we all may marvel at the forest below? It's our future we must embrace; past is past.

John Riding

'Creative' deficit

• At the meeting, to meet the RDC mayoral Candidates, discussions were held regarding the \$700,000 budget blowout.

The current Mayor suggested that the amount was not \$700,000.00, in fact it was only \$630,000.

This to me suggests that the Council is going to do some creative accounting to "reduce" this deficit.

The fact is, it does not matter how much creative accounting is done, it is still a deficit that was unbudgeted for.

This deficit is equivalent to \$5400 for every person who resides in our district.

This deficit is a serious matter and it should not be brushed off by the Council doing creative accounting.

Phillip Harvey

Ruapehu District Council replies

• The suggestion that Council is using "creative accounting" to brush off

the overspend in the Parks and Reserves activity is simply not

true.

Council has taken this matter seriously from day one, responding with transparency, urgency, and a firm commitment to putting things right.

It was Council's own staff – who are also ratepayers – who identified the overspend and made it public.

Since then, our Finance team have undertaken a detailed investigation into how it occurred, including operational decisions, contract cost escalation, supplier management, and procurement compliance.

A comprehensive report outlining the findings and seven key improvement actions was presented to and accepted by Council's Risk and Assurance Committee on 8 July.

Both the report and video of that meeting are publicly available.

To ensure public confidence in the process the Mayor and Council have required independent oversight at multiple levels which will include final auditing of Council's financial statements by the Office of the Auditor-General (OAG)

This has been an all-of-Council effort that reflects our commitment to accountability and responsible stewardship of ratepayer money.

This has included staff finding cost-saving measures that have largely offset the unbudgeted spending.

We understand the concerns of our community and are working hard to rebuild trust.

Council's final audited financial statements for the year ending 30 June 2025 will be adopted in public later this year.

Ratepayers can have every confidence that Council is being open, responsible, and focused on learning from this and improving how we deliver for our communities.

Clive Manley, chief executive, Ruapehu District Council

Ruapehu District candidates write

This section is set aside for letters from Ruapehu District election candidates.

Letters are limited to 300 words and the Editor reserves the right to edit or reject any letter. Priority will be given to candidates who haven't had letters published previously.

Letters will be published as space allows.

Rural wards bill?

• The establishment of Rural Wards, with a proposed division of the Ruapehu District into "The North" and "The South," has been tabled for consideration this election. It is an idea from both the current mayor, Weston Kirton, and also from council candidate John Chapman.

According to the Local Governance Act 2002, with the latest version being dated 1 July 2025, there are specific legal processes that must be implemented when a Council wishes to change its organisation and structure. Extensive Council time becomes involved, as well as resources, due to the due process legally required. Marketing new names for each area, meeting legal timeframes and obligations for such changes, writing related policies, etc would all have their own associated costs. It has the potential to add further annual rate increases.

The next 10 years are looking very challenging when it comes to the current Council Long Term Plan's implementation. This latest ward proposal of "Rural Wards" and the desire to increase Council seats from 10 to 12, does not make sound strategic or financial sense. It does not aid pivoting the Ruapehu region away from its current excessive millions of dollars of debt and towards achieving zero indebtedness.

Further ratepayer expense, and further likely indebtedness to the Crown or any other lending party, does not bode well. Sections 46 and Section 47 of the Local Governance Act 2002 each appear to make it clear: The Crown can choose to recover debts and losses when those in local authority cause debt and loss to occur for the Crown. Wise governance and stewardship of Council resources is needed.

We, the people, need to vote for not having local annual rates go up via the proposed idea of "Rural Wards." 10 seats is sufficient at this very time and going forward, and not 12 seats. Let's focus on doing better what is already in place. This election is going to be a significant one because economic times are tough. Wise, discerning voting by all registered voters is needed. Who will foot the bill for "Rural Wards" and a move to 12 seats at Council? All ratepayers.

Rhonda Kingston, RDC candidate

Four well-beings

• Don't strip councils of the four well-beings — they're the backbone of our communities.

After more than a decade in and around local government here in Ruapehu, I've seen the four well-beings — social, economic, environmental, and cultural — treated like politi-

cal currency. Removed, reinstated, and now at risk again. But here, where community is a lived reality, wellbeing is not a luxury. It's a necessity.

The "back to basics" rhetoric used to justify recentralisation isn't about saving money — it's about shifting power. It strips councils of their mandate under the guise of efficiency, ignoring that local government is the layer of democracy closest to the people. Weaken councils, and you weaken the communities they serve.

This government claims to support localism. Yet removing the four well beings contradicts that promise. It's a missed opportunity to collaborate and unlock local wisdom. Councils are not contractors — they are partners. And in places like Ruapehu, that partnership is sacred.

Over 80% of rates already go to water, roads, and infra-

Turn to Page 7

Theatre threat



Work has now been completed on restoring the interior of the Royal Theatre in Raetihi, but trustees are worried that there isn't much support for the facility.

From Page 1

place, it will be a terrible shame for it to close due to lack of people to continue the trust, if following Thursday's rescheduled meeting there aren't enough trustees to carry on then we will have to close".

"What a shame it will be that after 110 years of nearly continuous use the theatre ends up like so many other provincial theatres and closes."

THE WEEKLY WORKOUT

answers for each puzzle are included on this page

817

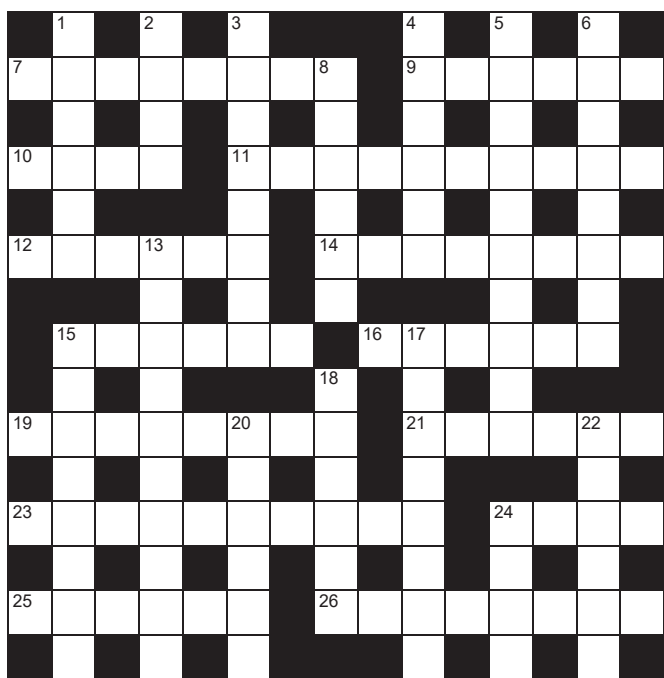
QUICK CROSSWORD

Across

7. Benevolent (8)
9. Savage (6)
10. Clue (4)
11. Peach or plum (5,5)
12. Forcefully request (6)
14. Magnificent (8)
15. Neighbourhood (6)
16. Make great efforts (6)
19. Appear like (8)
21. Strongly against (6)
23. Give new life or vigour to (10)
24. Drench (4)
25. Prickly plant (6)
26. Prudent (8)

Down

1. Come to a conclusion (6)
2. Cried (4)
3. Think carefully (8)
4. Descend by rope (6)
5. Enforced isolation (10)
6. Cleanse, purify (8)
8. Companion (6)
13. Shorten (10)



15. Painfully thin (8)
17. Travel across or over (8)
18. To the rear (6)
20. Tastelessly showy or loud (6)
22. Frightened (6)
24. Certain (4)



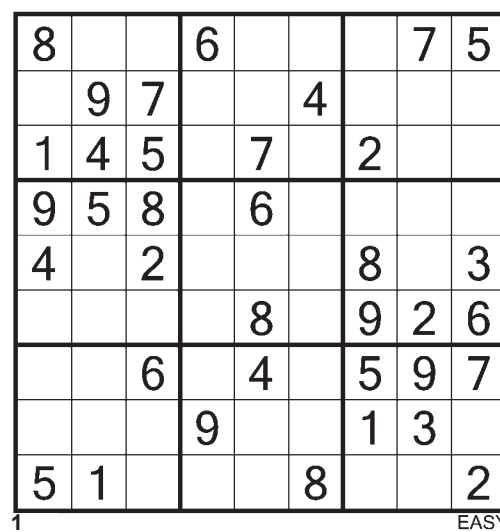
Puzzles © The Puzzle Company

THE TOP 10

1. I Will Always Love You, 2. Stieg Larsson, 3. The Gettysburg Address, 4. Verona, 5. Five, 6. Pluto, 7. 500 miles (200 laps), 8. Cortander, 9. Marathon, 10. Boston Legal.

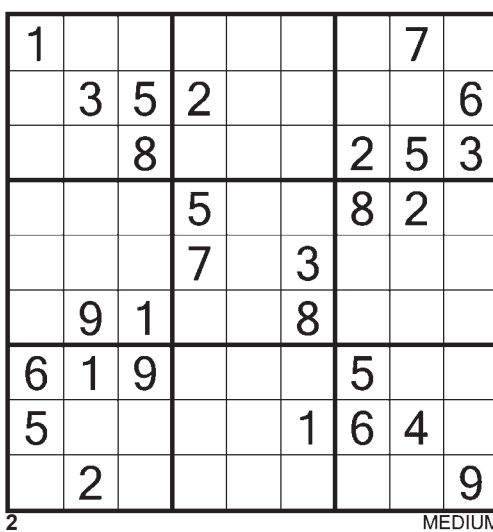
SUDOKU

Fill the grid so every row, column and every 3x3 box contains 1-9



The Top 10

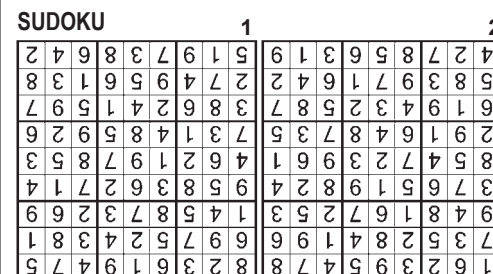
1. Whitney Houston had a huge hit in 1992 with which Dolly Parton song?
2. Which Swedish author wrote *The Girl With the Dragon Tattoo*?
3. What was the 271-word speech given by Abraham Lincoln in November 1863?
4. Is *Romeo and Juliet* set in Verona, Venice, or Milan?
5. *Raiders of the Lost Ark* was the first of how many Indiana Jones films?
6. What was reclassified as a dwarf planet in 2006?
7. Is the Indianapolis 500 called that because it's 500 laps or 500 miles?
8. It's called cilantro in North America. What is it called here?
9. What is usually the last athletics event at an Olympics?
10. Willam Shatner played Denny Crane in what 2004-2008 TV series?



CROSSWORD

18. Behind, 20. Brassy, 22. Scared, 24. Sure.
13. Abbreviate, 15. Skeletal, 17. Traverse.
- Abseil, 5. Quarantine, 6. Sanitise, 8. Spouse, 9. Consider, 4. Decide, 2. Wept, 3. Consider, 26. Discreet.
- Averse, 23. Revitalise, 24. Soak, 25. Cactus, 15. Suburb, 16. Strive, 19. Resemble, 21. Stone fruit, 12. Demand, 14. Splendid, 7. Generous, 9. Brutal, 10. Hint.

SUDOKU



Progress on reinstating access on Otunui South and Taringamotu Roads

Short-term heavy vehicle access on the Otunui South Rd and Taringamotu Rd dropouts are being provided until permanent long-term repairs are completed, reports the Ruapehu District Council.

Land transport manager Jodeci Waru-Savage said Council understands the road closures are creating major issues for the affected communities.

“We know the impact these closures are having and the need to reinstate heavy vehicle access as quickly as possible for stock movements and other essential freight,” he said.

“Although people may not have seen diggers on the ground, we have been working at pace with our contractors and NZTA Waka Kotahi on the best way to respond at each site.”

Waru-Savage explained that to secure NZTA funding for major works, Council must follow an agreed process that includes geo-technical surveys, design, and other technical work.

“We cannot bring in contractors ahead of an agreed plan with NZTA who are supportive but obviously hold their own perspective regarding risk, options and funding.

“Both dropouts present difficult repair locations which are estimated to cost over \$500,000 each to fix,” he said.

Otunui South Rd

Waru-Savage said the Otunui South Rd site presents multiple challenges including a large vertical drop, steep bank, erodible soils, ground water and a power line they need to consider.

Work on providing short-term heavy vehicle access is expected to start in the next week or so, subject to landowner and NZTA agreement.

“We anticipate this will take around two

to three weeks to establish.

“Once started, work is intended to continue straight through to the permanent fix, which is expected to take six to ten weeks depending on weather and ground conditions.

“There will be stop/go traffic management during the day, with some periods of scheduled road closures required. Temporary traffic management will remain in place until all works are complete.”

Work on providing short-term heavy vehicle access around the Otunui South Rd dropout is expected to start in the next week or so, subject to landowner and NZTA agreement.

Taringamotu Rd

Waru-Savage said short-term access on Taringamotu Rd for local farmers via a sidetrack is being scoped and should be in place by the end of the week (Friday 5 September). He added that design work for permanent repairs will take place over the next two to three weeks with construction scheduled to begin before the end of the year.

“Regardless, long-term repairs will be completed over the coming summer,” he said.

A side track to allow heavy vehicle access for local farmers around the Taringamotu Rd dropout is expected to be completed by Friday.

Waru-Savage added that Council thanks residents, especially the rural community, for their patience and understanding while repairs are progressed.

“The May and June storms caused around \$2.3 million in damage to Ruapehu’s local roading network, with road crews being called out hundreds of times in response to slips, flooding, fallen trees, and road dropouts.”



Otunui South Road drop-out – work progressing on access, says RDC.

Daffodil Day very well supported



Ohakune’s Daffodil Day stall was well supported on Friday, with help from Ohakune Primary School pupils, from left, Casey Shields, Eva Hovelle, Jessie Harding and Julius Kumeroa. Photo: Jude Chevin.

Daffodil Day on Friday was yet again very well supported, says Waimarino Cancer Society co-ordinator Sarah Drinkwater.

She said they are still waiting on EFTPOS figures but that it looks like it was at least as successful as last year’s, which was around \$2000 up on the previous year’s \$8000, despite the tough economic climate.

They took around \$4500 in cash on the day and are expecting the EFTPOS amount to be more than that.

Sarah said this year they added a sausage sizzle and

steak sandwich stall, which was very busy.

With Tūroa closed, they had a lot of visitors to town supporting the fundraising effort, buying daffodils, Daffodil Day merchandise, cakes and biscuits, as well as sausages and steak sandwiches.

Figures for Raetihi’s stall are still to be tallied but it is expected that this will also be a positive result.

Also contributing to the efforts was Ohakune Primary School, where they held a mufti day and sold cupcakes. They raised more than three times their usual amount.



RAETIHI WETLAND KAITIAKI CLEANUP

Father's Day: Sunday 7 September
SH4 opposite Alexandra Road
10:30AM - 2:30PM

Our tamariki asked, our Councillors agreed, volunteers generously removed the cars & now, it's our turn to stand up and help protect this stunning community space. Grab a bucket, enjoy a free sausage, and help us clear away over 30 years of rubbish still littering our place

TAKE ACTION FOR NATURE

PROJECT TONGARIRO

This event is part of Conservation Week 2025

Creative Communities Grant Funding applications now OPEN

If you are involved with any activity or project that increases participation in the arts or culture at a local level you may be eligible for grant funding support. For more info: (inc. application forms) see Council’s website: ruapehudc.govt.nz (or use the QR code) or call Candice on 07 895 8188.



COMMUNITY LEADERS COMMENT

I seem to recall my last column of comments was largely on the subject of not commenting! Well then perhaps this time we'll restrict ourselves to matters from the diary since that time.

In this neck of the woods we've seen a few falls of snow, more visitors than I can recall in any earlier six week period, three video teams with quite disparate purposes, and an increase in numbers under training. The snow was welcomed by all skiers and all children, although for those of the latter over 20 years of age, the novelty didn't last more than a few hours!

Our visitors over past weeks have included the Supreme Commander of the Thai Armed Forces (General Arthit Kamlang-Ek), one Australian General, one Australian Cabinet Minister (Mr Barry Cohen, Minister for the Arts, Heritage and Environment who also took in Tongariro National Park), the new Wanganui District Police Commander, "the Rangitikei County Council, and a host of others.

Our first video visitors were a team from the Close Up programme, who turned out a piece with the intriguing title 'Mud, Blood and Balls'. (Those who viewed it will be aware that the programme included the team's attendance at the annual Winter Ball in the Officer's Mess.) Another team from the Bank of NZ took some footage for internal use, as part of a series of clips on branches of the Bank in isolated or unusual locations. The third team was another from the BCNZ, preparing a

historical documentary on the life of Lord Freyberg. This latter piece — as in their 'Gullipoli' — The NZ Story shown last year — will again utilise the services of Lt Gen Sir Leonard Thornton as narrator. We'll have to wait some time to see this one though — it's not scheduled for transmission until early 1987.

Also among our visitors this month, although this time for something rather more extensive than just a one or two night stopover, are twelve serving officers and soldiers from the British Army who will be with us on the annual British exchange exercise until December. Twelve of our own residents have similarly gone to UK and Europe to serve with the British Army in those areas over a similar period.

On the local scene, our residents had their say at the August meeting of the Community Advisory Committee on the matter of local body amalgamations. The question was obviously one of greater significance to the more permanent residents of the area than it was to we peripatetic military, but both groups seemed to favour staying with the Rangitikei County. And then at a Waiouru Lions Club function on 19 August, we distributed the proceeds of the 1985 Desert Fair to the Lions Clubs of Taihape, Turangi, Ruapehu and Waiouru. A very pleasant evening was marked only by yours truly having neglected to take the cheques to the meeting, but put things right by mail the following day.

*Bruce Meldrum
Colonel, Commander
A.T.G. Waiouru*

Early days of cinema in Waimarino recalled

Picture theatres were busy places in earlier days, says the former proprietor of three of these theatres Mrs Emily Thompson of Ohakune.

"Picture trains" from National Park and Waiouru would arrive in Ohakune on a Saturday night and people would go to the movies at the Plaza Theatre at the Ohakune Junction. "It was just so jammed full you couldn't find seats," says Mrs Thompson.

"We would have to be finished by five past ten for the people to catch their picture train before the Express came through at 11," she recalls.

First film screenings

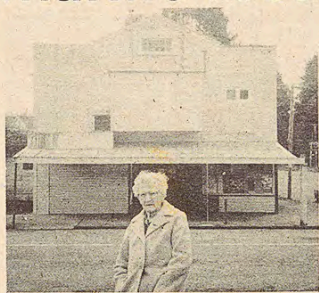
Mrs Thompson's husband Harry purchased his first theatre off John Punch senior in Raetihi in 1925. He also screened films at Horopito, Pakahi, at Plunket's mill and in the Rangataua Hall which he rented for six months.

The Patriotic Hall, where the present Kings Theatre in Ohakune stands now, was rented by Mr Thompson from Mrs Bob Little. Soon after, a group of businessmen calling themselves the Patriotic Committee took over the theatre.

Mr Thompson then screened in a building which was at the rear of where the Junction Ski Shop now stands.

George Goldfinch then built the Majestic Theatre at the Ohakune Junction and Mr and Mrs Thompson rented that from him during the 1930s.

The present-standing



Mrs Emily Thompson of Ohakune with the former Plaza Picture Theatre at the Junction in the background. Mrs Thompson recalls that special picture trains were run from Waiouru and National Park and patrons paid one shilling and sixpence admission in 1947.

Plaza Theatre at the Junction was built by Mr Thompson in 1935 with financial support from Chan Fung, who owned the grocery shop at the Junction and Laurie Taylor in 1936.

Fire then struck the Ohakune Theatre and the owners sold the hall and seats which were not damaged by fire to the Thompsons who now owned the three major Waimarino theatres, two in Ohakune and one in Raetihi.

The Kings Theatre in Ohakune and the Royal Theatre in Raetihi are still in the Thompson family today. The Plaza closed in January 1967. Until then it screened films regularly five nights a week.

The first type of movie to be shown in the theatres

three groceries, a bakery, a barber and two billiard rooms, a fruit shop, a radio shop, a butcher, a dentist, two drapers as well as tea rooms, hotels and boarding houses.

The Agincourt (now Turoa Lodge) and Kings Court were popular accommodation houses for single men working at the mills or on the railways.

Among the best remembered films Mrs Thompson can recall were 'Gold-diggers of Broadway', 'Gone with the Wind' and 'Giant'.

"We even screened some Chinese films for the benefit of local market gardeners and other Chinese residents."

During the screening of the 3-hour long 'Giant' the film was being shown reel-by-reel in both the Kings and Plaza Theatres by rushing each reel between Ohakune and the Junction. A total of 33 miles were clocked up between the two theatres that night!

Courier stops for 'quick one'

"There was one close call when one of the exhausted and thirsty couriers carrying the reels decided to call into the Sunbeam Club for a 'quick one'!"

The mills and the railways which had brought the crowds to the pictures gradually began to lessen as the mills closed and the railway workers were shifted. The increasing popularity of television, the abolition of 6 o'clock closing, the lowering of the drinking age, daylight saving and more recently the introduction of videos have all conspired to take business away from the theatres.

Harry Thompson was originally an Englishman who came to New Zealand after World War One. He settled in Pukekohe then later moved to Ohakune.

Mrs Thompson came here with her family — one of five sisters — at the age of three but lived in the centre of Ohakune as a child.

"It was like another town from the Junction in those days, it would be an afternoon out to visit the

Filagoers pay 1/6 in 1947

The Thompsons couldn't go any wider with screens after that as the buildings were not big enough.

Mrs Thompson remembers families who would come to the pictures every Saturday night without fail.

Regular theatre goers would come along and pay their 1/6 (one shilling and sixpence) admission before the show.

Tūroa snow report: MetService replies

MetService has replied to the Bulletin, regarding their Tūroa Ski Report, which has listed the skifield as "closed" for the whole season so far.

Pure Tūroa had said that they have been trying to get the issue fixed "for months".

But MetService says the status of the ski fields relies on an automatic feed of data provided by the ski fields.

"Unfortunately, this feed of information has not been available from Tūroa this year and therefore, the information we are displaying on our website is the latest data available to us.

"We are keen to have the most up to

date Information available for all the ski fields across New Zealand and have reached out to the team at Tūroa to have this feed reactivated.

"As a temporary solution, we have displayed a banner on the Tūroa web pages directing users to their website and we are keen to work with the ski field to find a longer-term solution."

MetService did not respond to other questions, such as why they can't at least manually change the "closed" status each day, or at least leave it blank.

Tūroa has advised that they are still trying to get the issue resolved.

Head start of Sky Tower team up the fundraising ladder



The Ohakune Volunteer Fire Brigade were out selling sausages at TCB on Saturday 23 August — raising lots of funds for their 2026 Sky Tower Challenge. They explained that, with lots of visitors in town, they wanted to give visitors the opportunity to support the cause. Despite being many months away from the challenge (May 2026) — which raises money for Leukaemia and Blood Cancer New Zealand — they have already raised over \$3000.

Conservation law reform undermines democracy and the protection of the whenua: FMC

Conservation law exists to protect Aotearoa's public whenua — and because it is public, New Zealand public should keep having a voice in decisions about its future, says Federated Mountain Clubs (FMC).

"The government's proposed reforms to the National Conservation Policy Statement (NCPS) undermine both of these foundations by stripping away democratic process and prioritising commercial interests, says FMC executive member Allan Brent.

"The reforms would transfer sole decision-making power to the Minister of Conservation, sidelining the New Zealand Conservation Authority and the public. This is unprecedented and would amount to a fundamental shift in New Zealand's cultural and political settlement for public conservation land.

"Governments can, legitimately, propose fundamental changes to how we care for our conservation land — but only after real dialogue with New Zealanders. That has not happened here," said Brent.

Despite FMC's detailed submissions earlier this year — along with many others from conservation groups and the public

— the Government has ignored our input. Not a single change has been made, calling into question how genuine the consultation has been.

The proposals also place undue emphasis on concessions. While FMC supports having straightforward application processes for concessionaires, commercial considerations cannot come at the expense of conservation. "The purpose of conservation law is to protect the whenua. That must remain the priority," said Brent.

As the national voice for outdoor recreation and the environment for more than 90 years, FMC is calling on the Government to retain the New Zealand Conservation Authority's role in decision-making on the National Conservation Policy Statement, adjust the NZCA's composition if necessary, rather than centralising power in the Minister and commit to a genuine process of dialogue with New Zealanders on these reforms.

"We will vigorously oppose these proposals unless the Government steps back and engages properly with the public," said FMC President Megan Dimozantos.

Celebrate the spud!

Saturday is your chance to celebrate the mighty potato in Ohakune.

"Join us at the foot of Mt Ruapehu for the ultimate après-ski experience," invites Paul Stieglbauer from The Kitchen.

"As winter fades and spring awakens, we're turning up the heat with a festival dedicated to the humble yet mighty potato.

"After a day carving up the slopes, treat yourself to a mouthwatering array of alpine-inspired potato dishes — from

loaded fries to gourmet pizza and everything in between.

"Pair your feast with craft beverages from your favourite local breweries, handpicked to complement every crispy, creamy, cheesy bite."

They have a lineup of local musicians and DJs bringing the beats.

"Don't miss this deliciously fun way to welcome spring at Ruapehu at the Secret Garden from 3pm, Ohakune Junction."



Weston with his wife Annette

Vote 1

WESTON KIRTON

for Ruapehu Mayor

"Vote for a Mayor who solves problems, gets things done, and puts ratepayers first."

What I've done:

- ✔ Passenger trains stopping at Taumarunui
- ✔ Helped keep the ski fields open
- ✔ Fighting to save the Chateau
- ✔ Pushed to remove derelict train carriages from Taumarunui
- ✔ Waimarino Wellness Centre saved
- ✔ Approved one of the lowest rates increases nationally
- ✔ Improved Council financial accountability after overspend.

What I'll do:

- ✔ Pledge to keep rate increases under 5%
- ✔ Push for two new Rural Wards on Council
- ✔ Ensure the new water entity with Whanganui works in our interest
- ✔ Keep pushing for jobs, economic growth, better health services.

Experience. Leadership. Results.

www.westonkirtton.org

Authorised by Weston Kirtton, RD4 Taumarunui. weston@westonkirtton.org

Long lunch raises \$4000 for rural support

The Ruapehu-Whanganui Rural Support Trust (RWRST) has extended a “heartfelt thank you” to the Whanganui River Catchment Collective (WRCC) for raising over \$4000 in support of local rural wellbeing at their Ladies Long Lunch, held on Thursday 28 August at Bradley’s Gardens in Taumarunui.

More than 60 women from across the region came together for the sold-out event, which celebrated the strength and resilience of rural women. Guests heard from

Phillipa Cameron of *What’s for Smoko* fame, who spoke about her role in the modern farming family as mother, wife, farmer and cook.

The afternoon concluded with a lively auction led by MC Julia Jones, who helped raise the final total from over \$1000 worth of gifts generously donated by local businesses.

“The generosity of local businesses and the community never cease to amaze us,” said Lyn Neeson RWRST Trustee.

“Events like this highlight just how strong and connected our rural communities are.”

Funds raised will directly support the work of RWRST, which provides support to farmers, growers and their families when times are tough on farm.

The Trust also reminds the community that their annual brunch shouts are returning this September, supported by a large group of sponsors who back farmers, the events kick off at PDC Barn Taumarunui on

Thursday 11 September, head to Farmlands Whanganui on Friday 12 September, and finish at the new PGGW store in Ohakune on Friday 19 September.

Running from 11am–1pm, the brunch shouts are a chance to enjoy a hearty meal, connect with others, and even win a spot prize — no strings attached, and everyone is welcome.

For more information on the upcoming brunch shouts or to learn how RWRST can support you, visit www.rural-support.org.nz/regions/ruapehu-whanganui.



A long lunch at Bradley’s Gardens saw \$4000 raised for rural support. Photo supplied.

Ruapehu candidates write

From Page 4

structure. The remaining 10–15% funds the soul of our towns: libraries, pools, sports fields, and community houses. These modest investments catalyse enormous impact — festivals, revitalised town centres, safer neighbourhoods—often delivered with minimal funding and maximum innovation.

The Future of Local Government review, informed by voices across Aotearoa, recommended entrenching the four well beings in legislation. The message was clear: well being must not be subject to political whim.

We face mounting pressures — poverty, housing, climate, health. Central government cannot solve these alone. They must partner with local government.

Leadership must instil hope, understand complexity, and build long-term solutions with communities — not for them.

Here in Ruapehu, the winds may shift — but the mountain stands firm. So too must our commitment to the four well beings.

They are not just policy. They are people, place, and promise.

John Chapman, RDC candidate

‘Under 5%’ rates pledge

Following is a press release on behalf of Ruapehu mayoral candidate Weston Kirton, which we have chosen, in the interest of fairness to all, to run with the candidate letters to the editor:

• Weston Kirton has announced a new campaign pledge to keep annual rates increases below 5% per year over the next council term. The policy is aimed at help-

ing the household budgets of local families, farmers, business owners, and retirees.

“I have been fighting for affordable rates since I was first elected. While I’m proud that Ruapehu’s last rates increase was one of the lowest in the country, I believe that Council can go further,” Weston Kirton said.

“The culture of accepting big rates increases has to end. With many local families and retirees struggling with the cost of living, we simply cannot afford to price our people out of the district. Council can live with more modest rates increases and if I am re-elected Mayor, they will,” Kirton said.

Kirton says his “Under 5%” rates pledge will apply to all rating decisions during the term unless there is an extraordinary event like a natural disaster.

“I’m inviting all council and mayoral candidates to join me in signing this pledge to put affordability first. This is about leadership and sound financial management,” Kirton said.

“Under my pledge, rates increases will be more affordable while at the same time ensuring the Council can raise enough funds to deliver what it needs to,” said Weston Kirton.

Weston’s rates pledge comes after his policy to create dedicated Rural Wards for the northern and southern parts of the district, which he says will ensure Ruapehu’s rural ratepayers have a strong say around the council table.

Weston Kirton, Ruapehu mayoral candidate

What do you want for the future of Ruapehu?

Hi I’m Lyn Neeson.
I’m asking for your vote for Mayor of Ruapehu District in the upcoming elections.

My vision is built on:

Inclusive Leadership

Where everyone around the council table is valued and empowered to engage meaningfully with the community.

Financial Accountability

I’ve long campaigned for concentrating on core infrastructure and managing the basics right. That \$700,000 out of budget overspend wouldn’t have happened on my watch. I’m acutely aware that the rate burden impacts all sectors.

Economic Diversity

Supporting all sectors of society to thrive, from small businesses, to tourism and farming. We are a diverse district and we all need to be supported.



VOTE

Lyn Neeson
MAYOR FOR RUAPEHU

Authorised by Lyn Neeson alyn@xtra.co.nz

RUAPEHU BULLETIN 3 September 2025 • 7

SHINE A LIGHT ON A LOCAL VOLUNTEER STAR CITIZEN OF THE YEAR AWARDS

Ruapehu Citizen of the Year Awards aim to recognise the special people who through their selfless actions help to create the type of community we all want to live in and be part of. There are **two Awards** covering **northern Ruapehu (National Park, Taumarunui and Ohura areas)** and **southern Ruapehu (Waimarino-Waiouru Ward area)**.

If you know of someone who:

- **Undertakes voluntary, unpaid work** - going above and beyond the call of duty consistently for no personal gain.
- **Has made a significant contribution over an extended period of time** - unselfish sacrifice of time and resources.
- **Works for the benefit of the community** through participation in a range of activities.

Please give our volunteer heroes the recognition they deserve.

More info inc. nomination forms are available from any Council office, or online at: ruapehudc.govt.nz (see link on homepage)

***Queries:** please call Kay Kidd on 07 895 8188.



Nominations **NOW OPEN**

ADVERTORIAL

Plumber Dan does it all – in the community and at home

When you call Plumber Dan, you're not just getting a team of licensed plumbers, gasfitters, drainlayers and builders with decades of experience. You're choosing a local business that takes pride in serving the Ruapehu and Whanganui regions both in the workshop and out in the community.

From urgent plumbing repairs to full bathroom renovations, Plumber Dan's team delivers professional service with a friendly face. They've built their reputation on reliability, quality workmanship and clear advice – so you know the job will be done right the first time. With over 40 years of drainage expertise and the latest technology at their fingertips, there's no blockage too stubborn to shift. And if you're thinking about switching to gas, their certified fitters can recommend and install the perfect energy-saving solution.

But it's not just pipes and projects that matter to Plumber Dan. Giving back to the community is at the heart of what they do. In 2024, the team took part in the Whanganui Duck Race, helping raise more than \$18,000 for Jigsaw Whanganui. This year they once again revved up their MINIs for the KidsCan Pork Pie Charity Run, covering nearly 2500 kilometres of New Zealand roads in true "Goodbye Pork Pie" spirit. The goal was simple: to raise vital funds for Starship Hospital, Leukaemia & Blood Cancer New Zealand, and KidsCan, all while having a blast along the way.

Whether it's fixing a leaky tap, upgrading a bathroom, unblocking drains, or raising money for local and national charities, Plumber Dan is here for it all.

Need a hand?

Pop in for a chat with the friendly team or call 021 635 517 today.



Plumber Dan supports a number of community events including the Ohakune Carrot Carnival, sponsoring Suzi Cato's visit, and the Pork Pie charity rally.

Headstones

Anderson Memorials
Your loving memories set in stone +110 YEARS 1914-2024

Traditional & Unique Headstones in all Cemeteries

462 Somme Parade, Whanganui.

Branches also at ...

Palmerston North Feilding
707 Main St 14 MacArthur St
06 356 4782 06 323 6616

info@anderson-memorials.co.nz
www.anderson-memorials.co.nz

06 343 8708

Plumber

Plumber Dan
Plumbing, Drainage, Gas & Building

Looking for a dependable local plumber in your area?

Count on our skilful local Ohakune plumber for all your maintenance plumbing requirements. Whether it's a leaking pipe or a blocked drain, we deliver quality service with fair pricing in the Ohakune & surrounding areas.

Don't hesitate, get in touch with us today!
office@plumberdan.co.nz

Ph 021 635 517

Land development

VERSATILE BOBCATS LTD

Bobcat+Truck Hire
Section clearing
Driveways Formed

For All Your Land Development Requirements

Topsoil available

Contact Steve Gray Free Quotes
Ph 027 685 4854

Hire

Why buy it ... hire it!
TWEEDDALE HIRE

NEW LOCATION
Next to BP Ohakune
Open Monday – Friday 8am – 4pm
Saturday 9am – 12pm. Sunday CLOSED
P 027 2799 724 E ohakunehire@xtra.co.nz

CHECK OUT OUR EXTENSIVE RANGE OF HIRE EQUIPMENT. SEE OUR WEBSITE
WWW.TWEEDDALE.CO.NZ

PARTY HIRE: floodlights, tables & chairs, heaters, spit roasters, wheelie bins, chafing dishes, crockery & cutlery, dehumidifier, flute & wine glasses, universal food cooker, porta-loos & showers, 3-section marquee, horse float.

Marquee Hire

FOR THE BIG JOBS:
digger hire, cherry pickers, pumps, wood splitters, generators, car trailers, post hole borers, furniture trailer, concrete equipment, rollers & compactors, portable trencher

Ph 06 387 5022

Heat Pumps

Choose the best heat pump designed to heat your home

Call us for a service and clean of your heat pump

MITSUBISHI ELECTRIC HYPERCORE

Free quotes. Interest Free Terms available.
Total 5-year Warranty. Q Card. ohakunetv@xtra.co.nz

Ohakune TV Electrical

Ph 06 385 8700

Earthworks

HAITANA EARTHWORKS

14 tonne digger
14 tonne wheel digger
Tip truck
Supply of metal, scoria and boulders

Farm work, section & driveways, rock walls

Ph 027 289 4404

For everything Ohakune, visit

www.ohakune.info

Curtains & Blinds

CURLS
curtains&blinds

FREE MEASURE & QUOTE

Custom Quality Curtains, Blinds, Shutters & Steel Kit Set Frames

curlscnb@gmail.com

Find us on facebook
@curlscurtainsandblinds

Ph 022 307 2627

Property Maintenance / Cleaning

UAPEHU COMMERCIAL CLEANING & PROPERTY MAINTENANCE LTD
Commercial | Residential Property Cleaning | Maintenance

- General Cleaning
- Property Maintenance
- Carpet Cleaning
- Water Blasting Services
- Floor polishing/buffing

For a free no obligation quote call:
RAY 021 886 509 or MAURICE 021 078 2419
Or visit: www.rccpml.co.nz

021 886509 or 021 0782419

Plumbing / Drainlaying

B&M PLUMBING LTD

- Plumbing & Drainlaying
- Pumps - sales, servicing & installation of all pumps
- Fires & Solar
- 5 Ton Digger with Augers, Ditchwitch & Tip Truck

"Your local Registered Certifier"

B&M PLUMBING LIMITED Call Brian 027 436 1075
Email: bmfred@xtra.co.nz Master Plumbers Representing Excellence

Ph 06 385 4718

Ohakune Landscape Supplies

- Huge range of Pebbles
- Builders mix
- Mulch
- Sand
- White chip
- Bark
- Topsoil
- Pavers
- Pea Straw
- Bagged Garden Fertilisers
- Rail & Mac Sleepers

~ Call to arrange supply ~ FREE loan trailer ~
~ eftpos available ~
Email: Ohakune.landscape@gmail.com

Ph 0800 926 315

Farmer turned IT student embracing life with Reserves

Invercargill-based Private Matchil Du Plessis feels he has the best of both worlds.

The 20-year-old is studying towards a Bachelor of Information Technology (IT), while serving in the New Zealand Army Reserve Force with Otago/Southland Company, 2nd/4th Battalion, Royal New Zealand Infantry Regiment.

Born in Hamilton, his sharemilking family moved every two or three years until they settled in the Invercargill area when he was a teenager.

“I worked on my parents’ farm and neighbouring farms growing up. I enjoyed the work but couldn’t see myself continuing a career in dairy farming,” Private Du Plessis says.

He decided to pursue a career in IT, but once he started studying at Southern Institute of Technology he yearned for the outdoors and the hard work he was accustomed to on farm.

That’s when he enlisted with the Reserve Force and completed basic training.

“It was a challenge, I didn’t know what to expect but I’m happy I got through.

Respect

“I always had high respect for the Army and service in general, and being a Reservist, getting outdoors, and serving the country was really big for me.

“I can’t believe I convinced myself to do it and I’m thankful I did.”

Now Private Du Plessis is enjoying keeping fit while developing infantry combat skills; skills he recently applied as part of a rifle company during Exercise Tauwharenikau in Waiouru.

The annual exercise involves more than 300 NZ

Army Reservists alongside more than 70 Regular Force personnel, with infantry, engineers, signalers, medics, dental specialists, mounted capability, combat support and intelligence specialists all taking part.

Air time

Private Du Plessis said it was exciting to fly up to Royal New Zealand Air Force Base Ohakea in a C-130J Hercules, before travelling on to the Central Plateau.

More air time was in store for the part-time soldier, during the exercise.

“The biggest highlight was flying with the Royal New Zealand Air Force in an NH90 helicopter. Second biggest was getting attached as infantry to the Waikato Mounted Rifles, where – along with the engineers – we assaulted an urban training area out of Pinzgauer 6WD vehicles,” he said.

“A big challenge I faced was never having been in Waiouru in the middle of winter before. It was cold. Very cold.”

There are three NZ Army Reserve Force infantry battalions across New Zealand. They work mostly outdoors in close-knit teams learning combat skills such as weapon handling including live firing, along with navigation, first aid, field craft and survival training while building physical fitness, strength, high levels of endurance and stamina. As they progress in their career, they develop their infantry skillset and command and leadership skills.

“I enjoy the NZ Army Reserves as I get to serve with some good mates in Invercargill, earn some money on the side, use weapons and get to sleep under the stars which is pretty good,” Private Du



Private Matchil Du Plessis in reserves training in Waiouru. He’s enjoying the chance to get outdoors, despite the tough winter conditions in the Army Training Area. Photo: NZDF.

Plessis said.

He would encourage others to join up. “For me, I held the Army in high regard, it was very scary and felt like I was getting out of my league. Small boy from a small town isolated from the city – but just get out there and do it. You’ll find it a lot easier when you’re actually in it and everyone is just as nervous as you. And by the end you’ll think how time flew and how much

fun you had.

“I can’t believe I convinced myself to do it and I’m thankful I did.”

Any Defence Recruiting enquiries can be directed to 0800 1 FORCE. Each Reserve Force company has its own training programme in line with its battalion’s training focus. Company level training typically happens one weekend a month, with platoon level training one night a week.



Experts ~ at your service

Builder



Design & Build Service

Renovations Kitchens Tiling
Bathrooms Fences Decks
House repairs & maintenance

Call Darryl Cooper

Ph 021 333 594

Tree & Garden Services



Treeshape Ltd
Tree & Garden Management

Garden maintenance & landscaping
Tree care and removal
Landscape design and installation

Over two decades of experience in commercial and private tree & garden management

Fully qualified and insured

Contact us today for a free consultation or estimate – email treeshapeltd@gmail.com

Ph 021 951 962

Engineering



• Manufacturing and repairs
• Access equipment hire
• Engineering supplies
• BOC gases
• 20T & 50T crane hire

29 Burns St, Ohakune.
027 473 0188 Mark or 027 444 2058 Bruce
Email: sales@ohakune-eng.co.nz

Ph 06 385 8952

Digger Hire

13.5 ton digger for hire

• landscpaing
• drainage - ponds
• hill country track work
Anything considered.

40+ year experience in diggers and dozers

Call or text Ivan @ Mead Contracting

Ph 027 486 8375

Electrician

Are you looking for an electrician who:
- Turns up on time?
- Keeps his promises?
- Offers efficient service & sound advice?

Then call Jake Fah at



Mountain Electrical
REGISTERED ELECTRICIAN
Ohakune – Raetihi – Rangataua – Horopito – National Park – Whanganui

Ph 021 770 123



Note:
Call Jude to book this space for next week.
Only costs ~~134.87~~ ^{134.87} GST each week for 50 weeks, in colour!
Other options available.
p: 06-385-8532
e: ads@ruapehubulletin.co.nz

Building Supplies



FOR YOUR BUILDING PROJECT & DIY NEEDS

MON to FRI – 7.30am – 5pm
SAT 9am –midday

Ph 06-385 8414

Gas Fitting



Cut down on your power bill.
Go gas hot water & heating – supplied and installed.
Call for a consultation.
Phone Denise 027 482 7488 or
Email accounts@applumbingandgas.co.nz

Ph 06 343 6866

Auto Services

AUTO SERVICE CENTRE





Authorised Holden Service Centre

Full workshop services for all vehicles, wheel alignments, computer diagnostics, warrant of fitness inspections, parts, batteries, engine oils.



84 Clyde Street, Ohakune
After hours 027 448 4080
autoservicecentre@hotmail.co.nz

Ph 06 385 9222

Upholsterers



• Furniture Upholstery
• Vehicle Upholstery
• Tarpaulins • Canvas & Leather
• Shade sails • Saddlery

Factory, SH49, Tangiwai, Ohakune.
Mobile 0274-467-289 Fax 06-385-8483
email: westlorne@xtra.co.nz
www.westlorne.co.nz

Ph 06 385 8487

Auto Services



RUAPEHU MOTORS

Locally owned and operated by mechanic Daniel Norris.

WOF \$75 car, \$45 trailer

Ruapehu Motors
Cnr Seddon St and Valley Rd, Raetihi.

For enquiries, please phone Daniel

Ph 027 863 7454

Carpet Cleaning



WANGANUI
CARPET & UPHOLSTERY CLEANING
24 HOUR FLOOD CALLOUT

We specialise in stains, odours and hard to clean carpets and fabrics.
P.U.R.T - Pet Urine Removal Treatment
cdwanganui@outlook.co.nz
www.chemdry.co.nz
Wanganui & Ruapehu Regions

0800 22 78 22

RUAPEHU BULLETIN 3 September 2025 • 9

BUSINESS NOTICES

Ohakune Health Hub

In pain? Let us help.

Experienced care in Osteopathy, Physiotherapy, Massage and Acupuncture – effective treatment for:
- Musculoskeletal pain - headaches & concussion - post-operative recovery - and much more.

ACC registered | 77-79 Clyde St, Ohakune
Book online: www.ohakuneosteo.co.nz

Bennett's Tank Cleaning Services

Septic tanks, water tanks, grease traps.
Call us for fast efficient service.
Phone Chris on 06-388-0452.



Ruapehu Mayor Weston Kirton

To arrange a meeting or call back, please phone Council on 06 385 8364 or email: kay.kidd@ruapehudc.govt.nz



RAILWAY MUSEUM & OP SHOP. Open 10am-2pm Thursday - Sunday. 62 Thames St, 100m past Railway Station. Sponsored by The Ski Shed.

PUBLIC NOTICES

Raetihi Promotions Charitable Trust AGM

Monday 15 September at 7.30pm
Raetihi Chambers, 44 Seddon St, Raetihi.

All Welcome.
Expression of interest to be a trustee contact Helen Cussins 0272 216 231.

Ngā Waihua o Paerangi Trust September Clinics

By appointment/drop in Personal health nurse - appointments are available on request in Raetihi or Ohakune, contact Donna 027 491 2183- (free cervical screening)

SERVICES AVAILABLE
Kaupapa Māori mental health and addictions (Rebecca)

Supporting/ addressing needs of tangata whaiora
Drug & alcohol intervention
After hours emergencies – mental health assessment & treatment team 0800 653 358

Whānau Ora (Tina, Darnella, Sylvia, Virginia)
Wrap around services for those with high health and social needs.
Advice and advocacy support
Support for GP practice

Tamariki Ora (Tina and Katherine)
Well child checks for pepe 0-5 years
Kaiawhina additional support

Pink Bus Onsite
Pop in for free breast cancer health advice with the pink bus at Ngāti Rangi Health Centre on 16 September – advice about mammograms, checking your breasts, and breast health.

Bowel Screening
If you have any queries relating to the bowel screening project, please contact Darnella Hawira 0272 455 278, Darnella.Hawira@ngatirangi.com

Appointments/More Information Contact Admin
Mon-Fri- 8.30am-5pm 06 3859 580/0, 0274 758 347 or email Katherine.Herewini@ngatirangi.com

We have an AED Defibrillator available on site.

FOR SALE

GARAGE DOORS, all types of garage doors, specialising in sectional garage doors and auto openers. For a free quote ring Alex Ferrier Building Services Ltd on 07-895-5890.

PUBLIC NOTICES



COMMUNITY LEGAL
ADVICE WHANGANUI

Free Legal Advice Clinics

Raetihi Chambers
44 Seddon Street, Raetihi
Wednesday between 10am – 2pm
10 September 2025

Ngāti Rangi Community Health Centre
Maungārongo Marae, 36A Burns Street, Ohakune
Thursday between 10am – 2pm
11 September 2025

To book an appointment, call or email us with your name and contact phone number

Community Legal Advice Whanganui (CLAW)
Phone Reception 06 348 8288 press option 1
Email – claw@claw.co.nz

PUBLIC NOTICES

Section 101, Sale and Supply of Alcohol Act 2012

Silverstone Lodge Limited has made an application to the District Licensing Committee at Ruapehu District Council for the **issue of an On Licence** in respect of the premises situated at **51 Carroll Street, Waimarino** known as **Silverstone Lodge**. The general nature of the business to be conducted under the licence is that of a **Hotel**. The days on which and the hours during which alcohol is intended to be sold under the licence are **Monday to Sunday 8.00am – 11.00pm**

The application may be inspected during ordinary office hours at the office of the Ruapehu District Licensing Committee at Ruapehu District Council, 59-63 Huia Street, Taumarunui. Any person who is entitled to object and who wishes to object to the issue of the licence may, not later than 25 working days after the date of the publication of this notice, file a notice in writing of the objection with the Secretary of the District Licensing Committee at Ruapehu District Council, Private Bag 1001, Taumarunui 3946.

No objections to the issue of a licence may be made in relation to a matter other than a matter specified in section 105(1) of the Sale and Supply of Alcohol Act 2012.

This is the second publication of this notice. The first notice was published on 27 August 2025.

SITUATIONS VACANT



Class 5 Truck Drivers & Excavator Operators

Jilesen Group Ltd require Class 5 Truck Drivers with tipping & spreading experience of aggregates and experienced & confident Excavator Operators to work in the Civil Construction, Rural and Forestry Environment based at our Taumarunui branch.

The successful candidate must have the following:

- WTR Endorsement
- Experienced driving on rural roads
- Willingness to operate a variety of machinery and assist with manual labour, as needed
- Physically fit and self-motivated
- A team player with a can-do attitude
- Be drug free
- Implement the company's Health and Safety policies and procedures
- Currently living in and have the right to work in NZ

Please email your CV and covering letter to info@jilesen.co.nz

For further information, you can contact the Jilesen Group office on 07 895 6251.

PUBLIC NOTICES

HAVE YOU GOT AN EVENT you want to tell the community about? Contact us here at the Bulletin on 06-385-8532.

PUBLIC NOTICES



Ngā Tāngata Tiaki o
WHANGANUI

ANNUAL GENERAL MEETING (AGM)

Ngā manga iti, ngā manga nui e honohono kau ana hei Awa Tupua.

The Annual General Meeting of Ngā Tāngata Tiaki o Whanganui Trust and presentation of the Annual Report for the period of 1 April 2024 – 31 March 2025 will be held on:

Sunday 28 September 2025, 11am
Raetihi Marae, 48 Raetihi Ohakune Road,
Raetihi 4632, New Zealand

AGENDA:

1. Karakia and Apologies
2. Presentation of Annual Report
3. Presentation of Annual Plan
4. Resolutions
 - a. Approve appointment of auditor
 - b. Approve trustee remuneration
5. Karakia Whakamutunga

The Audited Accounts will be made available on the Ngā Tāngata Tiaki o Whanganui website (www.ngatangatatiaki.co.nz) from 03 September 2025 and the Annual Report will be made available from 19 September 2025.

Transport will also be made available for those wanting to attend, please contact the office at 357 Victoria Avenue, Whanganui or phone 0800 AWA TUPUA (0800 292 8878).

Nau mai e ngā hapū me ngā iwi o tai, o uta, huri noa.

Sheena Maru, Chairperson

SITUATIONS VACANT



National Park School
Established 1925

Teacher Aide Position National Park School

We are currently looking for a motivated and caring Teacher Aide to join our National Park School team.

10 hours per week (fixed term) - 2 hours per day (must be present between 11.00am and 11.30am, and finish by 1.00pm)
2 hours per day 5 days per week
Term time only - Term 4 2025 & Term 1 2026
Student age range: Year 1 - Year 8

Interested candidates should submit a resume and cover letter outlining their qualifications and interest in the position to principal@nationalpark.school.nz.

Applications will be reviewed on a rolling basis. Job closes on Wednesday 11 September at 3.00pm

Ohakune Squash

A new round of Ohakune Squash Club inter-house has started. Results from the first round had three clear winners. Tecnifibre beat Head 104/71, Karakal beat Dunlop 104/73, Salming beat Unsquashable 100/74 and Prince got 80 for the bye. Last week Unsquashable narrowly beat Dunlop 90/8, Head beat Prince 106/75, Tecnifibre beat Karakal 97/75 with Salming getting the 80 points for the bye. The draw for this Thursday is 5:00pm Salming vs Karakal, 6:30pm Unsquashable vs Tecnifibre 8:00pm Dunlop vs Prince and Head has the bye. The kitchen continues to provide meals during the evening with proceeds going towards the two teams traveling to Superchamps national graded teams finals next week. An E grade men's team travels to Napier whilst an F grade women's team travels to Rotorua.

The Ruapehu zone Inter-club doubles competition continues on Wednesday nights with Ohakune picking up its fourth win last week. All teams are scheduled for Ohakune this Wednesday.

The junior Prince series finished with a final round held at the Rangitikei Squash club in Marton. Just under a hundred competitors competed in the series this year. Casey Shields finished fourth overall out of all the girls and Ocean Thompson finished fifth out of all the boys. Juniors can now look forward to the Ruapehu Tecnifibre junior series that starts in September. Two tournaments will be held at each of Ohakune, Turangi, Taihape, Taumarunui and Raetihi clubs. Unlike the Prince series that was restricted to lower grade juniors, these tournaments will be open to all juniors under 19. The first is scheduled for Ohakune on 7 September. Entries can be made through my-squash.

Local player, Hana Harding, has just returned from Cairns in Australia where she had been competing in the NZ secondary schools team against their Australian counterparts in the annual trans-Tasman clash. Local Ruapehu College teacher, Matthew Laurenson, also travelled as coach of the boys' team. Hana had mixed results with wins against her New South Wales and Queensland counterparts. Australia came out victors in the final New Zealand vs Australia test.

BUSINESS NOTICES



Lyn Neeson for Mayor

Inclusive Leadership
Financial Accountability
Economic Diversity

Please phone if you want a chat
07 896 7659

Authorised by Lyn Neeson

College Board places voting open

Eye on Ruapehu College, contributed by staff and students

Board of Trustees thanks

Ruapehu College principal Marama Allen has expressed thanks to the Board of Trustees for “the hard work, dedication and leadership they have shown over the past years”.

“Their ongoing commitment has been instrumental in shaping the direction of our College and ensuring it remains a place of opportunity, growth and excellence.

“Our trustees selflessly volunteer their time and expertise to make thoughtful decisions that benefit our students, staff, and the broader community.

“We are deeply grateful for their service and the positive impact they have made.”

Voting in the election for new Board members is now open and will close on Friday 12 September.

“We encourage all eligible members of our college community to participate and help choose the leaders who will guide us into the future.”

Student teachers welcomed

Allen said the school is excited to welcome three student teachers who have joined the staff and are already three weeks into their teaching placement at Ruapehu.

“They’ll be working alongside our staff and students for another three weeks, gaining valuable experience and sharing their knowledge across a range of learning areas.”

Sheng Zhang (Shawn) is from Guangzhou, China and his learning area is junior science and senior chemistry.

Linlin, who is from Chongqing, China and her learning area is junior social sci-

ence and senior mathematics and David Zhang who is from Shanghai, China and his learning area is junior social studies and senior physics.

“We’re lucky to have them as part of our learning community and look forward to the contributions they’ll continue to make in the classroom,” said Allen.

Ella Hawira – inspiring story

This week’s episode of the College’s ‘Inspiring Stories’ series shines a spotlight on Ella Hawira, a “vibrant, hardworking young woman” who proves that with persistence and passion, anything is possible.

Ella’s journey began with determination: working three jobs to fund a trip to the United States, where she discovered not just a love for the outdoors, but a whole new sense of purpose.

While working at Camp America, Ella found clarity about her future, realising her goal to become an outdoor educator. The experience helped unlock her creativity and taught her the value of stepping outside your comfort zone. She reflects on how art helped her think differently and how respecting teachers and seeking knowledge can take students further than they ever imagined.

“Ella lives and breathes the Habits of Mind, especially taking responsible risks, finding humour, and maintaining a growth mindset. Whether she’s running 3km every morning at Outward Bound with a smile or encouraging students to ‘go hard and enjoy school’, her energy is uplifting and contagious.

“Ella’s story is an uplifting reminder to take risks, stay curious, and chase what



Ruapehu College board of trustees, from left, back: Kay Sutton, Hayley Moore, Helena Burns, Lesley Edmonds; front, Sjahrne Haitana-Nesbit, Christine Wallis, Lyn Griffin-Chappel, Marama Allen.

lights you up.”

Next week’s episode will feature Judah Lyon who brings an honest, motivating look at perseverance, personal growth, and the power of staying open to learning.

Winter tournament football

A team of determined and passionate students travelled to Wellington last week to take part in the annual Trident Football Tournament, facing off against 26 school’s from around the country.. The event, running from Monday 25 to Friday 29 August, marked the college’s second year in this competition.

Facing off against schools from across the country, the Ruapehu teams encountered strong opposition on the field. “While they didn’t have any wins this year, what they

gained in experience, teamwork and personal growth was just as valuable,” says Michael Darmody.

“Throughout the tournament students showed resilience, respect and strived for excellence. They pushed through matches, adapted to new challenges and supported each other every step of the way.”

He said that, for many of the students, this was their first taste of tournament football at this level.

“The opportunity to test themselves against strong competition and experience the atmosphere of a regional sports event was truly exciting.”

He thanked the coaches and those who supported the students and the tournament.



Sheng Zhang, Linlin and David Zhang – student teachers experiencing Ruapehu College.



Jordi Demchy and Jason Young (in white) in football action.

Become a Volunteer Hero!

We are seeking passionate and dedicated volunteers drivers to join our team.If you are a people person, great listener and enjoy driving, this is the role for you! Supporting clients who would otherwise struggle to get to their treatment, you will help by transporting clients from their homes to Whanganui hospital, Mid Central Hospital or Hutt Hospital. Reimbursement and full training provided.

Why Volunteer?

- Make a meaningful impact in the fight against cancer
- Meet new people and work in a supportive team
- Gain valuable experience and skills
- Enjoy the fulfillment of giving back to your community

How to Get Involved: Contact our Volunteer Coordinator Fatima Khanzada
Phone: 027 322 6277 or 06 348 7402
Email: fatima.khanzada@cancercd.org.nz



Stay inside, stay safe

If you have an accident with a power pole, call us immediately



Stay switched on, stay safe around electricity.
Got a question? Call us on 0800 367 546 or check thelinescompany.co.nz

keeping you connected

Farm firm opens purpose-built store in Ohakune



The brand-new store and offices in Burns Street, Ohakune – making local staff (below) very happy. Photos supplied.



Waimarino farm supplies firm PGG Wrightson (PGW) opened its new purpose-built retail store and office on Thursday, 28 August.

Nick Berry, PGW's general manager retail & water, said the development in Burns Street, Ohakune reflects PGW's ongoing commitment to supporting rural communities in the Ruapehu district and beyond.

"This new dual PGG Wrightson and Fruited Supplies site caters for both our farming and horticultural customers in

the region and allows us to better serve them with a range of key improvements. These include an expanded product range, a more efficient store layout, upgraded health and safety features including a fully covered drive-through canopy, and a dedicated retail parking area separate from the freight unloading zone.

"Additionally, the larger bulk store enables increased stockholding, while the bigger more accessible yard allows for better product display and easier customer access.

"We've been part of

the local community for decades, with many of our customer relationships spanning multiple generations. We're excited to welcome both our loyal and new customers to this modern facility," said Berry.

He says the Ohakune site is an integral part of PGW's nationwide network of 89 Rural Supplies and Fruited Supplies stores. In addition to the retail store, the new development incorporates all of PGW's offerings, including livestock, wool and velvet, to support local farmers and growers, further demonstrating the company's commitment to supporting the Ruapehu rural community.

"For over 170 years PGW has been a trusted partner in rural communities across New Zealand," says Berry.

"Our people live and work alongside the customers they serve, providing expert advice, technical knowledge and on-farm support with professionalism and integrity. Throughout the years, our stores have continually innovated and evolved to meet the changing and diverse needs of our customers."

GET DAD SOMETHING YOU WILL WANT TO INHERIT THIS FATHER'S DAY



MS 162 (14")
PETROL
CHAINSAW



NOW
\$295
SAVE \$60

FSA 80
BATTERY
LINETRIMMER KIT



INCL. TOOL, AK 30 BATTERY
& AL 101 CHARGER

NOW
\$695
SAVE \$300

Valid on selected products from 01 September - 08 September 2025 or while stocks last. Terms and conditions apply. See in store or online for details.

Dekker Machinery

29 Seddon St, Raetihi. Phone 06 385 4224.



#1 BRAND IN GARDEN POWER TOOLS

STIHL

True Team Promise means our whole team works for you.

Contact your local Ohakune Consultant today!



Cameron Elliot
Sales Manager – Taumarunui / Ohakune
027 542 1009



Alan Blackburn
Rural / Lifestyle
027 203 9112



Polly Ingles
Residential / Lifestyle
027 315 8368



Jenna Hovelle
Residential / Lifestyle
027 361 0167



Jody Milham
Residential / Lifestyle
020 426 4322



Mere Haitana
Branch Administrator
06 385 4466

Scan the QR code to find us on Facebook



Property Brokers

Proud to be here

pb.co.nz
Property Brokers Ltd Licensed REAA 2008 | Q022738