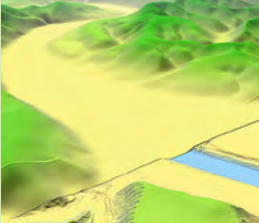





**STRANGE DOG**  
print | digital | retail


06 385 9320 | info@strangedog.design




**Iwi & crown get mapping done**  
P2



**Ruapehu art group mooted**  
P3



**No kidding: local Goats**  
P4



**Shearing record set at Te Pa**  
P7

## Welsh gun wins on big day for Shears

A Welsh shearer who has worked the Hawke's Bay summers for almost a decade has become the first Welshman to win an open shearing title in New Zealand in more than a decade, despite the fact that his countrymen have won the last two world championships finals.

Gethin Lewis, who works 3-4 months each year for Napier shearing contractor Brendan Mahony, surprised even himself with his win in the Taihape Shears Open final at Erehwon Station on Saturday, with a victory by 1.8435 points over runner-up, defending champion and 10-times Taihape Open winner Rowland Smith, of Maraekahaho, also in Hawke's Bay.

One of 43 in the Open field, he scraped in as last man into the five-man final, and reckoned at the end he might have been good for third, or fourth, or fifth.

Third place went to reigning Golden Shears and New Zealand shears open champion Toa Henderson who, having already guaranteed a place at the World championships in Masterton in March, opened the throttle big time for one of the fastest times shearing 20 adult sheep in competition in New Zealand.

Henderson blasted the 20 out in 14min 43.07sec, beating Lewis to the final cord by 9.84 seconds. Smith was last to finish the five-man final, in 16min 22.78sec, but underlined his hopes of another place at a World championships with a display of true quality, both on the shearing board and with the finished product in the judging pens.

Lewis, with one win to his credit in New Zealand previously as a senior at Pukekohe, claimed the first win by a Welsh shearer in a New Zealand competition Open final since Richard Jones won back to back titles

at the Inangahua A and P Show's Reefton Shears in 2013 and 2014.

From Rhayader, Powys, Lewis has represented Wales in several home and away series against New Zealand in the last three years, but last year just missed selection in the Welsh team for the World championships.

He did, however, shear a British eight-hour ewes record of 696, and his last competition win was the Welsh lambs shearing circuit final in August, at the Cwmduddwr Shears.

He wasn't sparing a lot of time to celebrate the breakthrough, heading straight back to work on Sunday for shearing at Puketitiri.

### Wales day

It was a good day for Wales, with Rhys Davies, of Builth Wells, winning the Intermediate final, in a remarkable day after the Taihape Shears, with 219 shearers and woolhandlers competing, had been relocated at just two days' notice, due to heavy rain which had made it almost impossible to get the 1500 sheep into the regular town venue Memorial Park.

Ngaio Hanson, of Eketahuna, sprang a big surprise by winning the Taihape Open Shears Open woolhandling final, with a 2.6 points margin over runner-up Pagan Rimene, who was competing just four days after shearing 481 lambs in the eight hours of a four-stand women's record in South Otago last Tuesday.

Hanson, a World championships representative in 2023, only managed her first Open final win, at Dannevirke, on 31 January last year.

The win on Saturday kept her hopes of

**Turn to Page 5**

## 'Our awa is who we are'



Rangatahi were "leaders in training" on the two-week tribal journey down the Whanganui River in January. See story page 9. Photo: Tuakana Te Tana.



The **SUMMER** is to make your move

**BAYLEYS**

BARTLEY REAL ESTATE LTD, BAYLEYS, LICENSED UNDER THE REA ACT 2008

Enquiry is rising, buyers are motivated, and confidence is building, the opportunities are real. **But results come from choosing the right team.**

At Bayleys, our strength lies in deep regional expertise, sharp market insight, and a tailored strategy designed to maximise every advantage.

We understand the nuances of residential, lifestyle, rural, and commercial, and how to **position your property for success.**

**Plan your 2026 move with the team that's Altogether Better.**

**Bayleys Ruapehu**

**06 385 0170 | 16 Goldfinch Street, Ohakune**



# How Iwi-Crown partnership fast-tracked Whanganui River project

By Moana Ellis, Local Democracy Reporting

A Whanganui River iwi entity says the speed of a river mapping project came down to a government agency recognising an iwi inquiry as a shared problem.

In July 2024, Ngā Tāngata Tiaki o Whanganui (NTT) wrote to the Commissioner for Crown Lands asking why the Whanganui River catchment was one of the few remaining regions in the North Island without LiDAR coverage.

LiDAR is a laser-based mapping technology that produces precise 3D models of the landscape.

NTT’s inquiry led to Bjorn Johns, principal geospatial specialist for Toitū Te Whenua Land Information New Zealand (LINZ), who helped turn the query into a national data asset.

“From the beginning, LINZ didn’t treat this as someone else’s problem,” NTT kaihautū Nancy Tuaine said.

“They were right alongside us, figuring out how to get it done. That’s what a good relationship with the public service should look like.”

Early trust opened up LINZ’s systems and support for NTT to lead the work, unlocking faster decisions and better outcomes, Tuaine said.

The approach removed barriers and accelerated delivery of nationally significant flood, hazard and planning data. The project was completed within about 12 months, from inquiry to delivery.

“The relationship was the difference. When iwi are recognised as capable partners and the agency frees up their expertise with a genuine willingness to help, things move,” Tuaine said.

The long-awaited data can now be used

in applications for planning and hazard management for floods and landslides, archaeology and other needs across the region.

“The real measure of success now is seeing the data used by iwi, councils, land-owners and communities across the entire Whanganui River catchment,” Tuaine said.

LiDAR across the 7400 km2 Whanganui River basin would also generate direct benefits to iwi Māori, including enhanced ability to develop the potential of Whenuā Māori land.

The new data could also identify possible access routes for landlocked whenua.

LINZ principal geospatial specialist Bjorn Johns said the project moved quickly because of an action-oriented approach by all involved.

The iwi inquiry coincided with a narrow funding window that required decisive action across agencies.

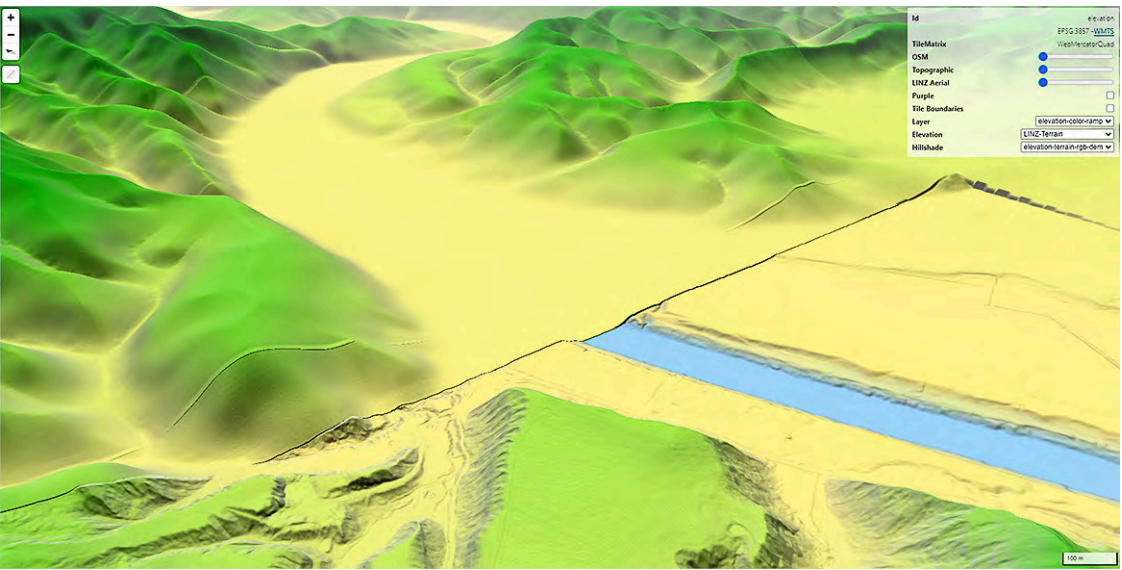
“We saw an opportunity for NTT to join the PGF-LiDAR partnership programme, but since that programme was winding down this would require quick action and commitment from LINZ, MBIE and NTT,” Johns said.

“LINZ and MBIE put their heads together to see what was possible.”

He said trust in NTT’s leadership allowed central government to move at pace. That translated into practical decisions early, including moving swiftly into procurement.

Working alongside NTT relied on clear roles and confidence in each other’s strengths, and LINZ’s experience and strong relationships across agencies made the 12-month turnaround possible.

With the data now public, success would be measured by its use and long-term



An image showing the contrast in information provided on the bottom right of the image from the boundary of the Whanganui District Council LiDAR, compared to previous mapping (top left) looking upriver. Image supplied.

value for environmental applications in the catchment, Johns said.

He said the project had also been personally rewarding. “It has been really rewarding to be involved with map-

ping such a diverse area from the Taranaki Bight to the summit of Ruapehu maunga and into King Country.”

LDR is local body journalism co-funded by RNZ and NZ On Air

## Rescue chopper seeks night goggles help

Emergencies don’t stop when the sun goes down - and neither does your Greenlea Rescue Helicopter. But flying at night makes every rescue harder and riskier.

A significant portion of

life-saving missions occur during nighttime hours. In 2024, 14.2% of the 534 missions performed by the Greenlea Rescue Helicopter crew were conducted between 8:00 p.m. and 8:00 a.m. - a figure that doesn’t even account for winter periods when darkness can fall as early as 5:00 p.m.

Unfortunately, the Night Vision Goggles (NVG) the crew are currently using are nearly 20 years old. Not only has the technology improved, but aging equipment like this is getting harder to repair. If even one pair of NVGs fail, the crew’s ability to fly at night will be seriously

Turn to Page 10



Night vision goggles are essential for some rescue operations.

## Ruapehu Events & What's On

### JANUARY 2026

**Mahi Aroha - DoC Summer Programme** 1 - 30 January  
For further information: [www.tongariro.org.nz](http://www.tongariro.org.nz).

### FEBRUARY 2026

**Waimarino A&P Show** 21 February  
For further information contact: [info@waimarinoshow.com](mailto:info@waimarinoshow.com).

**Waimarino Sheepdog Trials** 27-28 February  
Contact Secretary – Roger Suckling 027 897 1610.

### MARCH 2026

**Blazing Hills Trail Run/Walk** 14 March  
Contact [www.blazinghills.nz](http://www.blazinghills.nz).

**Waimarino 103rd Rodeo** 21-22 March  
Secretary: Cathy MacLean 06 385 4636 or 027 240 1090. Email: [c\\_d\\_maclean@xtra.co.nz](mailto:c_d_maclean@xtra.co.nz). Raetihi Rodeo Grounds, Parapara Highway

**Ring of Fire** 27-28 March  
See [www.rof.co.nz](http://www.rof.co.nz) for more information

**Tussock Traverse** 28 March  
See [www.tussocktraverse.co.nz](http://www.tussocktraverse.co.nz) for more information

**Raetihi Wild Food Challenge** 28 March  
For more information email: [localwildfoodchallenge@gmail.com](mailto:localwildfoodchallenge@gmail.com)

For all your ski board and bike rental needs

# T C B

Ski, Board & Bike  
Cnr Ayr St & Goldfinch St, Ohakune  
06-385-8433 [tcb.nz](http://tcb.nz)

FOR MORE DETAILS, GO TO [OHAKUNE.INFO](http://OHAKUNE.INFO)  
IT'S FREE TO LIST SO PLEASE LET US KNOW IF YOU HAVE AN EVENT COMING UP ...  
[ADS@RUAPEHUBULLETIN.CO.NZ](mailto:ADS@RUAPEHUBULLETIN.CO.NZ)  
LINK YOUR EVENT TO [EVENTFINDA.COM](http://EVENTFINDA.COM) FOR FREE

## Eating out in the Ruapehu District

Call 06 385 8532 to list your business here

### KINGS BAR & RESTAURANT

**3 Rimu St Ohakune Junction Ph: 06 385 8648**  
Est in 1913, historic Kings offers an inviting menu by international chefs, a great selection of boutique wines and craft breweries including award winning Ruapehu Brewing Co beers in the fridge and on tap. See our Facebook page for what's on. Please check our open times as these will vary.

### LA PIZZERIA

**6 Thames St, Ohakune Junction Ph: 06 385 8558**  
Ohakune's most famous pizza restaurant. For over 35 years, we've been serving Ohakune's best pizza. Come up and see us in the "Junction" at the end of the Old Coach Road and try one of our hot, tasty, handmade pizzas. Same great menu available for takeaway. Open 7 days, 4pm – late. [www.lapizzeria.co.nz](http://www.lapizzeria.co.nz)

### LKNZ LODGE & CAFE

**1 Rata St, Ohakune Ph: 027 257 LKNZ (5569)**  
Open every day. Menu includes our delicious big breakfast, creamy mushrooms, homemade soups, wedges, nachos, toasties, waffles and more ... Volcanic coffee, muffins & scones, real fruit smoothies and thick shakes. Dine in or takeaway. Onsite parking. [www.lknz.co.nz](http://www.lknz.co.nz)

### POWDERKEG

**Bottom of the mountain road Ph: 06 385 8888**  
For over 35 years, The Powderkeg has been serving up exceptional food and service in a warm, welcoming atmosphere. Whether you're enjoying a sunny afternoon on our spacious balcony or indulging in our weekly specials like Sushi Fridays and Smokehouse Sundays, there's always something to look forward to. Join us for an unforgettable dining experience and follow us on Instagram @powderkegbar for the latest updates and mouthwatering offers! Open daily 7am till late

### THE CYPRUS TREE

**79 Clyde St, Ohakune Ph: 06 385 8857**  
Check out our new menu. Kiwi craft beers, boutique wines and cocktails to quench that thirst. Playroom for the kids, foosball, air hockey and spaces to keep the kids entertained. Spectacular mountain views. A great place for casual get togethers or special occasions. Open every day.

### UTOPIA CAFÉ

**47 Clyde St, Ohakune Ph: 06 385 9120**  
Open 7 days from 8am – 3pm for all day breakfast and lunch. Serving Havana Coffee. A cosy memorable atmosphere with a great range of cabinet food and beverages, Frappé and smoothies. Vegan/Gluten-free options for both savoury and sweet are available. Speedy free Wi-Fi! A perfect place for everybody!

## Community and Emergency Services

**Alzheimers Whanganui Inc** – Email [admin@alzheimerswhanganui.org.nz](mailto:admin@alzheimerswhanganui.org.nz) or for support phone 06-345 8833  
**Budget Advice** – Email [waimarinobudgetservices@gmail.com](mailto:waimarinobudgetservices@gmail.com) or phone 027 259 5285.  
**CCS Disability Action (Whanganui)** – Sheryl Brightwell 0800-789-654  
**Child, Adolescent and Sexual Health Nurse** – 06-385-5019  
**Child Youth and Family Service** – 0508-326 459  
**Churches:** Anglican, 06-385-4957. Baptist, 027-206-1874. Catholic, 06-385-8858 or 027 606 5186. Gospel Chapel, 06-385-8453. Presbyterian, 06-388-0675 or 06-385-8708. **Waiouru – duty chaplain** 06-387-5599 ext 7031 or 021-493-692  
**Civil Defence** – Simon Osborne, Emergency Management Officer (EMO), RDC – 07 895 8188, or 027 220 0569. [Osborne@ruapehudc.govt.nz](mailto:Osborne@ruapehudc.govt.nz)  
**CLAW community free legal advice:** Whanganui 06-348-8288  
**Doctors: In an emergency call 111.** Ruapehu Health Ltd 06-385-4211  
**Information Centres** – Ohakune 06-385-8427, Raetihi 06-385-4805  
**Ngati Rangi Community Health Centre** – 06-385-9580  
**Plunket Society** – Plunket Nurse 06-385-5019  
**Police and Search & Rescue Emergency, call 111**  
Ohakune 06-385-0100, Raetihi 06-385-4002, Waiouru 06-387-6884, Military Police 0800-50-11-22  
**Red Cross** – 0800 RED CROSS (0800 733 27677)  
**Rotary Club Raetihi** - Ohakune – 027-344-5669  
**Ruapehu REAP** – 0800 00 REAP (0800 007 327)  
**Ruapehu Maori Wardens** – Email: [ruapehumaoriwardens@gmail.com](mailto:ruapehumaoriwardens@gmail.com)  
**St John – in an emergency call 111**  
**Taumarunui Counselling Services:** For confidential counselling in Waimarino phone 07-895-6393  
**Victim Support Contact Centre** – 0800 842 846  
**Waimarino Cancer Society:** Co-ordinator 06 348 7402  
**Waimarino Health Care Centre** – Raetihi 06-385-5019  
**Waimarino Community Toy Library** – [waimarinotoylibrary@gmail.com](mailto:waimarinotoylibrary@gmail.com)  
**Women's Refuge** – 0800-REFUGE 0800 73384  
**Ruapehu Mayor – Weston Kirton**, enquiries to 06-385-8364 or 07-895-8188.  
**Owhango-National Park Community Board:**  
Peter Zimmer - Chairperson 027 479 1926; Gail Gray - Deputy Chair 027 434 6599; Anthony Gurr 021 487 742; Eddie Marsters 021 108 0279; Murray Wilson 027 542 9079; Luke Pepper - (RDC Rep) 027 329 2849  
**Taumarunui/Ohura Ward Community Board:**  
Molly Jeffries, Chairperson 021 431 8333; Sophie Stockbridge, Deputy Chairperson 020 401 11190; Johnny Dryden 027 573 4726; Brian Portland 027 558 5585; Oriwia Wanakore 020 498 4088; Robyn Gram (RDC Rep) 027 389 1912  
**Waimarino-Waiouru Community Board:**  
John (Luigi) Hotter - Chairperson 027 274 2616; Stu Robinson - Deputy Chairperson 021 024 07657; Kay Henare 027 924 7252; Colin Pakai 021 091 67315; Emma Young 027 347 1457; David (Rabbit) Nottage - (RDC Rep) 021 111 6514  
**Guidelines is published free of charge. Please help us to keep it up to date – call us if your details change, or if you see something that needs changing: 06-385-8532**



# Chapman proposes arts advisory group

An arts advisory group to support local artists can be formed without adding pressure to ratepayers, says Ruapehu District councillor John Chapman.

He said the proposal will be presented to Council for consideration as part of a wider effort to use existing council assets, partnerships and influence to strengthen the district's creative sector.

Chapman said the district's artists play a vital role in shaping community identity and vibrancy and deserve practical support even in tight financial times.

"Local artists bring our district to life. They tell our stories, enrich our towns and help make Ruapehu a place people want to visit and live in," he said.

"At the same time, households are under real financial pressure. That means we need to find ways to support the arts that don't rely on increasing rates."

Chapman has discussed the concept informally with both the mayor and the chief executive, who have expressed interest in exploring the idea further.

"Both the mayor and our CE see real value in this direction. They recognise the importance of the arts and are open to considering an approach that is responsible, sustainable, and cost-neutral," he said.

Under the proposal, Council would establish an Arts Advisory Group made up of local artists, councillors, and council

staff with an interest in the arts. The group would provide advice on opportunities, identify barriers, and help ensure that existing council resources are used more effectively to support the creative sector.

"The arts advisory group would give artists a direct voice in shaping opportunities across the district," Chapman said.

"This wouldn't be a talking shop. It would be a practical, collaborative space where we look for low-cost, high-impact ways to strengthen the arts.

The proposal outlines several potential actions that could be explored if Council endorses the initiative, including:

- Opening underused council spaces for exhibitions and pop-up galleries.
- Integrating art into existing capital and placemaking projects.
- Promoting local artists through council communications.
- Streamlining processes for murals and public art installations.

"These are actions we can take within existing budgets, without adding a single dollar to the rates bill," Chapman said.

"It's about enabling, not spending, and about recognising that the arts are part of what makes Ruapehu a great place to live."

The proposal will be brought to an upcoming Council meeting, where elected members will be asked to consider endorsing the initiative in principle.



A group of artists and supporters of the arts gathered in Raetihi to discuss the idea of arts advisory group. Photo: Barbara van der Woerd.

# Horizons acknowledges interim decision on Plan Change 2

Horizons Regional Council has acknowledged the interim decision on Plan Change 2 to the One Plan, released by the Environment Court on 9 December 2025.

Plan Change 2 was introduced to improve how the One Plan manages existing intensive farming activities in target water management sub-zones. It was subsequently appealed to the Environment Court by several parties. The interim decision responds to those appeals.

Horizons group manager strategy, regulation and science Dr Lizzie Daly says the court requires further input from parties involved before making a final decision.

"The interim decision sets out the court's findings on a range of matters, including supporting the Council's provision for alternative consenting pathway to Table 14.2 (specified reduction pathways), and directs further work on discrete issues," says Dr Daly.

"Parties involved in the appeal process, including Horizons, have been directed to work together in responding to some matters raised by the court by late-February 2026."

Over the coming weeks, Horizons staff will consider the decision and address the

court's directions in preparation for discussions with the parties early in 2026.


"Although the interim decision provides a good steer on the future consenting framework, the policies and rules are still not operative until the final decision," says Dr Daly.

"In the meantime, Horizons will continue to prepare for implementation, provide updates where it can, and will also keep under review any wider resource management reform proposals."


People can find more information about Plan Change 2, the process to this point, and the Environment Court's interim decision online at horizons.govt.nz, with a 'Plan Change 2' section available via the website's homepage.

Plan Change 2 proposed key changes:

- Update nitrogen leaching limits outlined in Table 14.2 using improved Overseer modelling data.
- Create a clearer and more practical process for farmers to get resource consents if they couldn't meet the table within targeted water management sub-zones.
- Emphasise the use of good farming practices.



TRANSPOWER



POWERCO


SUNDAY  
15 FEBRUARY  
2026

PLANNED POWER OUTAGE | 9AM TO 4PM

Taihape, Waiouru  
& surrounding areas

Why will the power be out?  
Transpower, the owner and operator of the national grid, is carrying out important maintenance at the Mataroa substation and its connecting lines.  
For this work to be completed safely and quickly, the substation has to be turned off.  
We know there is never a good time to be without power and apologise for the inconvenience this may cause. We have worked with Powerco, your local lines company, to find a suitable time and date.  
The map here shows areas likely to be affected by this outage, and your power retailer should notify you to confirm if your power will be affected.

Preparing for the power outage  
Making sure you're prepared for a power outage can be a huge help. For some useful tips, visit [transpower.co.nz/plannedoutages](https://transpower.co.nz/plannedoutages)  
Contact us  
Email us at [communications@transpower.co.nz](mailto:communications@transpower.co.nz) or phone 04 590 7000 for more information. You can also call your power retailer.



Electricity outage area

\*These are illustrative areas only.

Need advice on the area, activities or even the weather, call or stop in and see the team for firsthand knowledge.

Free phone: 0800 647 483.  
Email: [isites@visitruapehu.com](mailto:isites@visitruapehu.com).

Ohakune: 9am-4pm  
54 Clyde Street.  
OHK: 06 3858427

Taumarunui: 9am- 4pm  
Railway Station, 116 Hakiaha Street.  
TAU: 07 895 7494





# No kidding: local goat numbers bloom

From sometimes just one or two locals taking on The Goat trail run earlier in the event's history, to around 50 for 2026, local support for the event has blossomed.

George Taylor ran his 18<sup>th</sup> Goat this year and says a lot more locals are getting into the event. In the past, he was sometimes the only local competitor.

"It's great that the Trust (Ohakune Events Charitable Trust) has taken over and keeping it going."

George, running in the Nifty Goat age bracket, admits his times now are not what they once were, but he still enjoys the challenge. This year his time was a tad over four hours, while in 2005 he ran it in 2:52.

He says he enjoys the training – running various trails around the country – and having a goal like The Goat helps with motivation.

George says one local person – Rita Hammond – is responsible for a big in-

crease in locals this year and she confirmed that she had persuaded about 15 friends and family to join her in the run.

Leah Sims is a newcomer to the event, saying it was a "bucket list achievement – one I didn't know I'd be capable of ticking off".

"It was also a powerful reminder of how lucky we are to live in this region. Set beneath Maunga Ruapehu, the course tested every cell in my body."

She said that a friend saw her training a few months ago for the Whanganui Half and asked, "are you training for The Goat?"

Leah said her first response was that she wasn't that fit.

"But my friend Jess had other ideas and when she shared the opportunity with me four weeks before race day, my training suddenly had to ramp up."

She said the Squadrun team also deserve

Turn to Page 12



Local Goat George Taylor crossing the finish line with his two top supporters, Henry and Grace. Adding to the challenge of the 21km run from Whakapapa to Tūroa, George also ran alongside Henry in The Kid race on the Mangahewo Forest Track. Photo: Liz Brooker.

## Letters

### Rainuary

• Two years ago, my pumpkin vines were across the lawn and climbing up the shrubbery by the end of January. Not so far last year, and this year our summer temperature has dropped from 25° to 15° and the vines haven't even left the garden.

This is a paradoxical consequence of global warming. During 2025 we put 42 billion more tons of fossil fuel CO<sub>2</sub> into the atmosphere, trapping more and more heat in our biosphere. Our oceans have absorbed more than 90% of this heat, mostly in the tropics in summer, and buoys transmitting deep ocean temperatures to satellites told scientists that the oceans had absorbed 23 more "zettajoules" of heat in 2025, enough to boil the water in 23 billion Olympic-sized swimming pools.

This is causing more and more water vapour to rise from in the oceans to the north of us every summer, and more and

more storm water to fall on us a few weeks later. As more and more lightweight summer air flows south towards Antarctica at high altitudes, more and more heavier cold air flows back up to us at ground level.

Sooner or later a tropical storm will dump 280mm or so of rain on our headwaters, and farmers who did not heed that NIWA bloke's warning at the Beef+Lamb woolshed meeting I attended for the *Bulletin* 15 years ago might find their hillside topsoil has buried their river flat fences. It is good to see that many did listen and a lot more trees are now growing on our hills.

The good news is that there is plenty of grass for the animals on those hills, while Windy.com is predicting four of the next 14 days will be without rain, so more hay for winter can still be baled. And I'll be growing my Grey Crowns in tunnels next summer.

John Archer

## THE WEEKLY WORKOUT

answers for each puzzle are included on this page

834

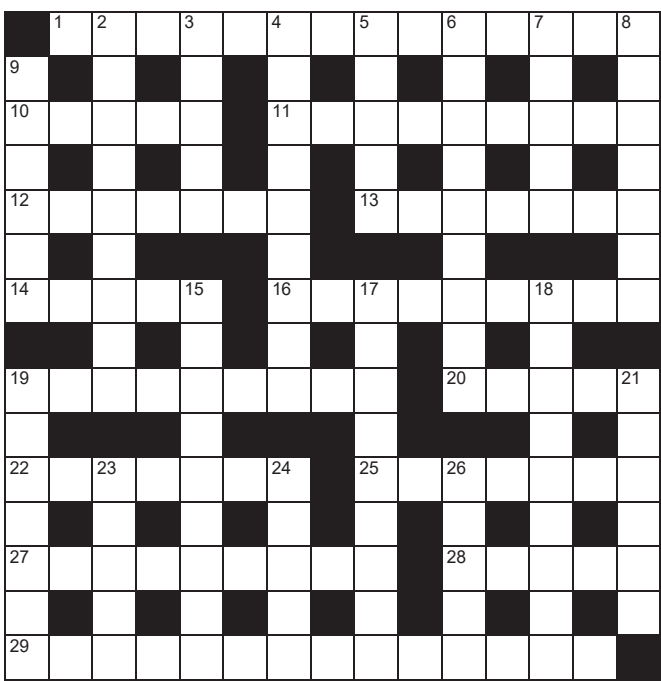
### QUICK CROSSWORD

#### Across

1. Insincere expression of sorrow (9,5)
10. Aromatic herb (5)
11. Correspondence from an admirer (3,6)
12. Oval (7)
13. In music, a lively movement (7)
14. Dance style; spicy sauce (5)
16. Diction (9)
19. Relating to air or gases (9)
20. Surplus (5)
22. Despicable person (2-3-2)
25. Avoidance (7)
27. Pampering (9)
28. Killed (5)
29. Patriotic song (8,6)

#### Down

2. Regal shade (5,4)
3. Inexpensive (5)
4. Unlike (9)
5. Seaside golf courses (5)
6. Arboreal residence (4,5)
7. Thespian (5)
8. Cut of steak (7)
9. Guides (6)
15. Armoured mammal (9)



17. Group of instrumentalists (9)
18. Complex (9)
19. Ardour (7)
21. Canopy (6)
23. Financial inspection (5)
24. Last in a series (5)
26. Valuable possession (5)



Enjoy WordFit puzzles?  
Magazines available from  
[www.thepuzzlecompany.co.nz](http://www.thepuzzlecompany.co.nz)

Puzzles © The Puzzle Company

### THE TOP 10

1 (Leo) Fender, 2 Six60, 3 Mrs Hudson, 4 Ice hockey, 5 Rhythmic, 6 Stephen Hawking, 7 Ang Lee, 8 Helicopters, 9 Black Sea, 10 Roald Dahl.

### SUDOKU

Fill the grid so every row, column and every 3x3 box contains 1-9

			7		1	3	9	
				2	4		8	
							4	2
		9		3		6	2	
5		1				4		3
	3	6		4		9		
3	7							
	1		8	5				
	6	5	2		9			

MEDIUM 2

			5			7		
	2		1				3	5
7				2				1
					3			4
9			2	7	8			3
1			9					
4				6				9
3	6				1		8	
		8			9			

HARD

### The Top 10

1. Who created the Broadcaster (later Telecaster) and Stratocaster guitars?
2. Which New Zealand band attracted 50,000 people to Western Springs in 2019?
3. Who was Sherlock Holmes' housekeeper and landlady?
4. In which sport are penalties awarded for roughing, slashing, tripping and holding?
5. What form of gymnastics was added to the Olympics in 1984?
6. A *Brief History of Time* is a 1988 book by which scientist?
7. Who was the director of *Sense and Sensibility*, *Crouching Tiger, Hidden Dragon* and *Brokeback Mountain*?
8. What type of aircraft is Igor Sikorsky most famous for?
9. The Danube flows into which sea?
10. Who wrote *Charlie and the Chocolate Factory*?

### CROSSWORD

Across: 1. Crocodile tears, 10. Thyme, 11. Fan letter, 12. Ellipse, 13. Scherzo, 14. Salsa, 16. Elucation, 19. Pneumatic, 20. Extra, 22. So-and-so, 25. Evasion, 27. Indigent, 28. Slain, 29. National anthem. Down: 2. Royal blue, 3. Cheap, 4. Different, 5. Links, 6. Tree house, 7. Actor, 8. Siffrin, 9. Steers, 15. Armadillo, 17. Orchestra, 18. Intricate, 19. Passion, 21. Awning, 23. Audit, 24. Omega, 26. Asset.

### SUDOKU

1	2
4 6 5 9 7 2 8 3 1	7 6 3 4 5 8 2 9 1
9 1 2 8 5 3 7 6 4	5 8 1 4 7 3 6 2 9
3 7 8 4 1 6 2 5 9	2 3 6 9 5 7 1 4 8
7 3 6 5 4 2 9 1 8	1 3 2 9 4 5 6 7 8
6 8 9 1 3 7 4 2 5	9 4 6 2 7 8 3 1 5
5 2 1 9 6 8 4 7 3	8 7 4 6 1 3 2 5 9
8 4 9 1 6 3 7 2 5	6 2 5 8 9 4 1 7 3
6 8 7 3 9 5 1 4 2	7 9 3 5 2 6 8 4 1
1 9 3 6 2 4 5 8 7	2 4 1 8 7 9 3 5 6
2 5 4 7 8 1 3 9 6	8 1 3 5 9 4 7 2 6



# Welsh gun wins on big day for Shears

**From Page 1**  
another World championships bid alive, helping her into a selection series final in Marton on 7 February, with Rimene among the opposition.

Third place on Saturday went to multiple World and Golden Shears champion Joel Henare, who gained enough points to secure his place at the championships in Masterton.

The entries on Saturday comprised 161 shearers across five grades (Open 43, Senior 35, Intermediate 30, Junior 40, Novice 13) and 58 woolhandlers (Open 24, Senior 14, Junior 20), making it the biggest show of the season to date, as competitors and gather from around the globe ahead of the World championships.

Shearing Sports New Zealand chairman Warren Parker, of Raglan, said he and others were in awe of the work done by Taihape Shears chairman Hayden Tapp and his committee in relocating the competition.

## The move

They had decided on the move only on Thursday morning, having realised less than 24 hours earlier it would be near impossible to stage the championships at the town venue, where the 60th anniversary in 2023 was notable for the wet weather and the need to use tractors to haul the sheep trucks in and out of the park.

“It is not a case of simply transferring a rugby game from a sodden ground to something a little better,” he said.

“They have to shift everything out of one venue, move it 20-30kms out into the country, have to work out how the sheep are going to get in and out, where the judges will do their job, where everyone will park and where will they be fed. This is full-on rehoming for a day, and it’s amazing the way shows keep on stepping up to meet the challenges.”

One shearer said it comes with the nature of the game. “Everyone just gets on and does it,” he said.

Tapp said station manager James Maher had no hesitation in making the 50-year-old woolshed available.

With only five stands available, instead of six at the park, extra competition heats were needed, stretching the day to over nine hours of shearing, with over 1500 sheep trucked in from two nearby properties.

## Results

Results of the Taihape Shears at Erewhon Station on Saturday 24 January:

Shearing:

Open final (20 sheep): Gethin Lewis (Wales) 14m 52.91s, 52.6955pts, 1; Rowland Smith (Maraekakaho) 16m 22.78s, 54.539pts, 2; Toa Henderson (Kaiwaka) 14m 43.07s, 54.6035pts, 3; Jack Fagan (Te Kuiti) 15m 33.81s, 55.5405pts, 4; David Buick (Pongaroa) 15m 37.75s, 55.7875pts, 5.

Senior final (10 sheep): Taelor Tarrant (Taumarunui) 10m 14.62s, 41.531pts, 2; Kaivah Cooper (Napier) 11m 2.62s, 44.831pts, 2; Dylan Young (Gisborne) 11m 21.06s, 45.553pts, 3; Luke Parkhouse (Devon, England) 11m 52.56s, 47.128pts, 4; Emma Martin (Wyndham) 13m 7.84s, 47.992pts, 5.

Intermediate final (8 sheep): Rhys Davies (Builth Wells, Wales) 10m 1s, 40.3pts, 1; Zakaia Lewis (-) 9m 44.34s, 40.842pts, 2; Joseph Scahill (County Mayo, Ireland) 10m 0.5s, 41.025pts, 3; Riley Norman (Eketahuna) 11m 15.75s, 41.925pts, 4; Lachie Cameron (Kimbolton) 11m 32.35s, 42.8675pts, 5.

Junior final (4 sheep): Kinston Pue (Raetihi) 5m 37.22s, 22.361pts, 1; Alex Wrenn (Dannevirke) 5m 43.78s, 22.439pts, 2; Sean Dunne (Wicklow, Ireland) 5m 32.1s, 24.335pts, 3; Camden Bolton Smith (Woodville) 5m 59.97s, 27.4985pts, 4; Cian Dafis (Llanrwst, Wales) 5m 46.22s, 28.061pts, 5.

Novice (1 sheep): Oliver Bambry (Pahiatua) 4m 34.9s, 20.745pts, 1; Justine Eerden (Belgium) 5m 2.25s, 21.1125pts, 2; Rikihana Salmond (Te Kuiti) 4m 21.69s, 25.0845pts, 3; Ngahuaia Salmond (Te Kuiti) 3m 51.06s, 25.553pts, 4; Connor Rose (Central Hawke’s Bay) 3m 15.72s, 26.786pts, 5.

Open Speedshear: Tiare Tipu (Porangahu) 17s,



Welsh shearer Gethin Lewis on his way to winning the Taihape Shears Open shearing final at Erewhon Station, east of Taihape, on Saturday. Photo: NZ Shearing sports.

1; Jack Fagan (Te Kuiti) 17.1s, 2; Simon Goss (Whanganui) 18.7d, 3; Chris Dickson (Masterton) 19s. 4; Brett Roberts (Mataura) 17.1s (DQ).

Woolhandling:

Open final: Ngaio Hanson (Eketahuna) 344pts, 1; Pagan Rimene (Alexandra) 37pts, 2; Joel Henare (Gisborne/Motueka) 37.126pts, 3; Te Anna Phillips (Taumarunui) 79.056pts, 4.

Senior final: Amy Bell (Weber) 31.704pts, 1; Tia Manson (Piopio) 40.15pts, 2; Whakapunake (Naki) Maraki (Flaxmere) 48.94pts, 3; Nohokainga Maraki (Flaxmere) 143.332pts, 4.

Junior final: Leah Tamainu (Nuhaka) 23.708pts, 1; Gemma Buick (Pongaroa) 32.34pts, 2; Caitlyn Murphy (Pongaroa) 43.38pts, 3; Paige Marshall (Kihikihi) 36.91pts, 4.

## BAYLEYS

### NEW LISTING



### Ohakune 29 Manuka Street

#### Move-in ready on Manuka

Discover easy, modern living at 29 Manuka Street, a freshly updated four-bedroom, two-bathroom home tucked away in a quiet cul-de-sac and just a short stroll from town. Recently redecorated throughout, this property features a near-new kitchen, updated bathroom, fresh décor, and excellent heating options, including a wood burner and heat pump - ensuring you stay cosy when it's cold and cool when it counts. Enjoy superb indoor-outdoor flow from the light-filled living area to a private back deck, ideal for summer BBQs or quiet morning coffees.

bayleys.co.nz/2900853

718sqm 4 1 2

Asking Price \$550,000  
Jenny Dekker 027 455 5674  
jenny.dekker@bayleys.co.nz  
BARTLEY REAL ESTATE LTD, BAYLEYS, LICENSED REAA 2008

## BAYLEYS

### NEW LISTING



### National Park 16 Park Lane

#### Mountain retreat

Discover 16 Park Lane, an immaculately presented three-bedroom chalet set in a peaceful, established enclave in National Park. Warm, welcoming, and beautifully maintained, this fully furnished alpine hideaway is ready for immediate enjoyment. Step onto the private deck with partial mountain views, perfect for morning coffees or après-adventure relaxation. Inside, the home is spotless, stylish and double-glazed, offering effortless comfort year-round. The current owners have created years of happy memories here - now they say sell, sell, sell!

bayleys.co.nz/2900854

3 1 1 3

Asking Price \$333,000  
Jenny Dekker 027 455 5674  
jenny.dekker@bayleys.co.nz  
BARTLEY REAL ESTATE LTD, BAYLEYS, LICENSED REAA 2008



# RUAPEHU Summertime BULLETIN

Priceless newspaper  
Summer 2025-2026

**Your guide  
to Ruapehu  
in summer**

**WIN!**

Enter our  
reader competition  
– see Page 46 – and  
go into the draw to win  
a Ruapehu summer  
adventure!

**OUT NOW!**

**Pick up a copy or read it online  
at [ohakune.info](https://ohakune.info)**



**Don't forget to enter our reader competition  
(see page 10) and go into the draw to win a  
Ruapehu summer adventure!**



# Shearer claims solo world record at Te Pa

The Everest of world sheep shearing records is back in New Zealand after an epic day in the Central North Island earlier in January

Shearer Simon Goss broke the solo nine-hours strongwool ewes record by a single sheep on Monday 5 January.

In the first attempt on the record of 731 set by New Zealander Matthew Smith in England nine and half years ago, Goss claimed the record-breaking sheep in the last minute to finish with a new record of 732.

Shearing at Ātīhau-Whanganui Incorporation's 4800ha Te Pa Station, near Raetihi, he opened the day ahead of the pace with 166 in the first two hours from 5am to breakfast, but tense moments followed as he shored successive 1hr 45min runs of 141 to morning tea, 140 to lunch, 144 to mid-afternoon, and finally 141 from 3.15pm to the end at 5pm.

The big drama came in the middle of the day when the four-man World Sheep Shearing Records Society had to bring-in the fifth umpire, using video replay to confirm Goss had made the last catch of the run before time was called.

One referee, Neil Fagan, of Te Kuiti, said it confirmed Goss made the catch "by less than a second", enabling him to shear-out the ewe in what proved a single woolly one crucial to the outcome.

The referees had already rejected two sheep in that third run, but 29-year-old Goss bounced back for 144 after the noon-1pm graze, leaving him to get at least 141 in the run home, which he achieved about 20 seconds before the clock clicked over to 5pm.

The woolshed was packed and thou-

sands throughout the world watched a livestream, the drama evident to everyone throughout, but Goss, brother of women's rugby legend Sarah Hirini, kept a remarkable cool, which was highlighted further when, dressed in T-shirt, shorts and jandals, he received the certificate from referees convenor, Australia-based New Zealander Steve Potaka-Osborne, about 45 minutes after the rope was pulled for the last time.

Smith had shorn runs of 164, 142, 142, 141 and 142 when he set the record on 26 July 2016 at Trefranck, which he farms with wife Pippa in Cornwall, and where he watched the livestream.

"It was an amazing effort with the support of a very experienced team. I'm absolutely rapt for him and his team," said Smith.

"It couldn't have been broken by a more worthy gentleman," he said.

The record had been more than a year in the planning, with Goss already the co-holder of a two-stand lambs record set in January 2023.

The crew included contractor Rod Sutton, of Dannevirke-based Sutton Shearing, and who had similar drama when he broke the record with a last-seconds catch for a tally of 721 in a King Country woolshed in 2007.

Alongside them were fellow multiple records-breaker Justin Bell, of Weber, and other world record breakers were present in numbers.

The sheep had to be at least two years old and carry an average of at least 3kg of wool each, as determined in a sample shear that took place on Sunday afternoon.

Goss grew up near Kimbolton, in



Simon Goss on his way to a new World shearing record at Te Pa station in the Central North Island on Monday. Photo supplied; Jacob Moore.

Manawatu, son of former Golden Shears Intermediate shearing champion Alan Goss and 2008 Golden Shears open woolhandling champion Ronny

Goss. He went to co-educational Feilding Agricultural High School, which runs its own annual shearing competition and which has produced a remark-

able collection of top rugby stars in recent years, including his sister and All Blacks Sam Whitelock, Aaron Smith and Codie Taylor.

BID

DAY

OUT

FEB 2026

Property Brokers

## Ohakune 9 Moore Street



### Canadian style chalet

This delightful Canadian Style home is not your average A Frame. The family sized Chalet is set on a quarter acre section and has three double bedrooms, complemented by a versatile fourth room, ideal as a snug single or perhaps a study or office, and is only a five-minute leisurely stroll to Town.

- 3 Bedrooms + office
- Open plan living
- Selling fully furnished
- Powered double garage
- Established fruit trees
- Potential Rental Income \$480pw

3 1 1 2  
**Auction** 1.00pm, Wed 11th Feb, 2026  
**View** Mon 2 Feb 10.30 - 11.00am  
**Web** [pb.co.nz/OHU204438](https://pb.co.nz/OHU204438)

**Polly Ingles**  
M 027 315 8368  
 **Jenna Hovelle**  
M 027 361 0167

Property Brokers Ltd Licensed REAA 2008 | [pb.co.nz](https://pb.co.nz)

## Ohakune 73B Arawa Street



### A practical property

This super tidy low maintenance chalet sits in a central location in Ohakune and is ready waiting for you to either move into or rent out.

- Modern chalet
- 3 bedrooms, 2 bathrooms plus a mezzanine area
- Drying room/storage room
- A generous size chalet
- Mountain view
- Fenced back yard
- Healthy Homes Standard
- Rental appraisal \$420pw

3 2 1  
**Auction** 1.00pm, Wed 11th Feb, 2026, (unless sold prior), Taumarunui Squash Club, 41 Turaki Street, Taumarunui  
**View** Mon 2 Feb 10.30 - 11.00am  
**Web** [pb.co.nz/OHU207002](https://pb.co.nz/OHU207002)

**Jenna Hovelle**  
M 027 361 0167  
 **Polly Ingles**  
M 027 315 8368

Property Brokers Ltd Licensed REAA 2008 | [pb.co.nz](https://pb.co.nz)



# Ohakune Primary School prize winners 2025

Following are the prize winners from the Ohakune Primary School prize giving held in December 2025:

Kiwi Room: Academic Henry Taylor; Diligence Hendrix Hooper; Pride Dionte Ratu-Bellamy.

Kereru Room: Academic Eila Westermeier; Diligence Astrid Paynter; Diligence Jay Whiley. Pride Chelsea McLaughlin and Apirana Hansen.

Ruru Room: Academic Excellence Harlan Bradnam; Diligence Te Manawa Henare; Pride Santiago Chamorro.

Tui Room: Academic Scout Scarf; Diligence Zairus Ratu-Bellamy; Pride Leo Senekal.

Piwakawaka: Academic Excellence Aropeta Bates; Diligence Art King; Pride Orli Athukoralage Don.

### Class Certificates

Room 9: Academic Flynn MacLeod. Academic Addison Tuck. Diligence Tod Macrae. Pride Mila Berry.

Room 10 Academic Eva Petrickova and Hannah Eley; Diligence Ethan Buchanan. Pride Zara Tracey.

Room 12: Academic Excellence Taylor Williamson; Diligence; Pride Van Gray.

Room 14: Academic Excellence Hana Pilbrow; Diligence Bella Cranston; Pride Courtney Lee.

Room 1: Academic Excellence Caitlin Drinkwater; Diligence Makinli Nation; Pride Colton Deadman.

Room 2: Academic Excellence Jack Whitehead; Academic Excellence Julius Kumeroa-Ruri; Diligence Zephaniah Paynter; Diligence Jayden Varley; Pride Si'Kylah Wall.

Room 4: Academic Excellence Casey Shields; Diligence Levi Demchy; Pride Sarah Alvarez.

House Captains for 2026: Rimu- Harper Gun-

nell, Everly-Rose Kristiansen, Lachlan Gilberd. Kahikatea- Caitlin Drinkwater, Ocean Thompson, Izaac Wu. Miro- Kyani Ririnui; Hamish Drummond; Charlie Coutts. Maire- Makinli Nation: Millie Senekal: Mairere Wihare-Gray. Totara- Roseanna Donald: Bodie Deadman and Paige Tracey.

Ambassadors for 2026: Eliza MacLean, Mackenzie Phillips, Emmy Mott, Thomas Sherrit, Harper Evans, Tiana Grossart, Meila Smales, Zephania Paynter.

### Special Awards

Enviro Team Awards: Middle School Hannah Eley; Senior School Fonatane Kayes and Casey Shields. Enviro trophy and book for leadership within the Enviro Team, Chloe Mabbott. Junior members: Idah McLeman, Justin Thomas-Fredricksen, Eila Weistermier, Hendrix Jones, Scout Scarf, Finn Mastrovich, Hana Allen, Aliah Tahau, Madeline Olsen, Lincoln Hammond, Ziggy Gray.

Special Award for a young leader in the Enviro Team: Finn Mastrovich.

Musicianship Award Harper Gunnell.

Ellis-Summerhays Cup awarded to a learner who has pride in themselves and shows courtesy and respect to others, Meila Smales.

Speech Cups: Year 4 Zara Tracy; Year 5 Sophia Young; Year 6 Harper Gunnell; Year 7 Emmy Mott; Year 8 Girls Casey Shields.

Pinnacle Cup, Jackson Moody. Manaakitanga Cup, Chase Haitana. Tohu Manawanui tau ono cup, Mairere Wihare-Gray and Paige Tracey. Bonnie Collins-Bramley Cup, Thomas Sherrit. Tohu Manawanui tau whitu cup, Te Amorangi Renata. Whakauti

Parahi, Tiana Grossart. Te Ao Maori, Emmy Mott, Alexander-Leigh Kumeroa-Ruri, and Ihaia Henare. Senior Kapa Haka Leadership Selena Macrae and Cairo-Marcel Hawira and Chase Renata. Deadman Arts Award, Selena Macrae/Julius Kumeroa-Ruri.

Technology Cups: Soft Materials- Eva Hovelle; Hard Materials- Jayden Varley.

Ruapehu College awards: Sports Kace Morrison; Academic Madison Lee.

Hinewaipare Cup, Casey Shields. Mainfreight Award Suriya Kristiansen. Luka Sirett Cup, Harper Gunnell. Di Boulton Cup awarded for Perseverance and resilience: Fontane Kayes and Chloe Mabbott. Karangatira Paraihe Cup, Elise Drinkwater.

The Mana Tangata Award, Casey Shields.

Principals Cup, Julius Kumeroa-Ruri and Casey Shields.

Academic Excellence: Year 4 Zara Tracy; Year 5 Zhuolun Cui; Year 6 Hamish Drummond; Year 7 Eliza Maclean and Bear Soverel. Proxime Accessit Elise Drinkwater. Dux, Madison Lee.

JJ Sirett Cup, Hendrix Jones.

House Cup, Rimu.

William Pike Challenge Award, Jayden Varley.

School Ambassadors in 2025 have been: Casey Shields, Fontane Kayes, Julius Kumeroa-Ruri, Elise Drinkwater, Madison Lee, Kyuss Chester-Freeman, Eva Hovelle, Selena Macrae, Si'Kylah Wall, Chloe Mabbott

### Service Awards

House Captains Certificates 2025: Rimu Chloe Mabbott and Te Amorangi Renata; Kahikatea Harper Evans, Emmy Mott, Mackenzie Phillips; Totara-

Cade Crossfield and Mihirangi Hansen Paige Lloyd; Maire Tiana Grossart, Ruby Burnett, Thomas Sherrit, Maiterangi Wihare-Gray; Miro Calum Coutts, Emma Church-Zwiebruk, Zephania Paynter.

### Sports Awards

Swimming. Junior Girl Bella Cranston. Junior Boy Hunter Shields and Ethan Buchanan. Intermediate Girl Harper Gunnell and Everly-Rose Kristiansen, Intermediate Boy Izaac Wu. Senior Girl Casey Shields, Senior Boy Chase Renata.

Athletics: Junior Girl Bella Cranston; Junior Boy Reale Richards. Intermediate Girl Everly-Rose Kristiansen; Intermediate Boy Bear Soverel; Senior Girl Jessie Harding; Senior Boy Kace Morrison.

Cross County: Junior Girl Hana Pilbrow; Junior Boy Ethan Buchanan; Intermediate Girl Everly-Rose Kristiansen; Intermediate Boy Bear Soverel; Senior Girl Eva Hovelle; Senior Boy Kace Morrison.

Netball: Year 7 and 8 Netballer Of The Year Casey Shield. Coaches Award Elise Drinkwater.

### Special cups:

Ohakune Primary School Sporting Excellence Cup, Madison Lee and Kace Morrison. Wallis Cup for Sporting Spirit and Fairplay - Bella Cranston.

Junior Sports

Athletics: Year 0 Girl Esther King; Year 0 Boy Korban McDonnell. Year 1 Girl Aliah Tahau; Year 1 Boy Apirana Stevenson-Hansen; Year 2 Girl Hana Allen; Year 2 Boy Orinn Spooner. Midget Girl Isla-Belle Lucas; Midget Boy Kobe McIvor-Clark. Cross Country Year 0-1 Girl Esther King; Year 0-1 Boy Hendrix Hooper; Midget Girl Sayge Hawira; Midget Boy Art King.



## Experts ~ at your service

### Tree Services



**REMOVAL**

Specialists in: removal • hazardous trees  
• wind thrown trees • broken or old trees  
• location • tree trimming • felling  
• section clearing  
• hedge trimming • general landscaping

**FREE QUOTES • CHIPPER AVAILABLE**  
treemoval@yahoo.com

**Rodney 027 518 4955**

### Carpet Cleaning



**WANGANUI**

**CARPET & UPHOLSTERY CLEANING**

**24 HOUR FLOOD CALLOUT**

We specialise in stains, odours and hard to clean carpets and fabrics.

P.U.R.T - Pet Urine Removal Treatment  
cdwanganui@outlook.co.nz  
**www.chemdry.co.nz**  
**Wanganui & Ruapehu Regions**

**0800 22 78 22**

### Building Supplies



**FOR YOUR BUILDING PROJECT & DIY NEEDS**

**MON to FRI – 7.30am – 5pm**  
**SAT 9am –midday**

**Ph 06-385 8414**

### Concrete Services



**MCP TAUPO – MORE THAN CONCRETE**  
**Taupo's No.1 Concrete Service**

Locally owned and family-built, MCP Taupo delivers quality concrete solutions you can trust.

From house slabs and driveways to commercial floors and civil works — concrete done right.

✓ Free site check & quote ✓ Full prep, pour & finish  
✓ 800+ projects completed

Strength in Every Pour – Built Right from the Ground Up

**www.mcptaupo.co.nz**  
Email admin@mcptaupo.co.nz | 800 Rakaunui Rd, Taupo

**Jasper 027 840 2222 | Norm 027 511 1166**

### Engineering



- Manufacturing and repairs
- Access equipment hire
- Engineering supplies
- BOC gases
- 20T & 50T crane hire

**29 Burns St, Ohakune.**  
**027 473 0188 Mark or 027 444 2058 Bruce**  
**Email: sales@ohakune-eng.co.nz**  
**Ph 06 385 8952**

### Property Maintenance / Cleaning



Commercial | Residential Property Cleaning | Maintenance

- General Cleaning
- Property Maintenance
- Carpet Cleaning
- Water Blasting Services
- Floor polishing/buffing

For a free no obligation quote call:  
RAY 021 886 509 or MAURICE 021 078 2419  
Or visit: **www.rccpml.co.nz**

**021 886509 or 021 0782419**

### Septic Tank Work

## Bennett's Septic Tank Cleaning Services

Septic tanks, water tanks, grease traps.

Call us for fast efficient service.

**Phone Chris 06-388-0452**

**Ph 06 388 0452**

### Hire

## Why buy it ... hire it! TWEEDDALE HIRE

**NEW LOCATION**  
**Next to BP Ohakune**  
Open Monday – Friday 8am – 4pm  
Saturday 9am – 12pm. Sunday CLOSED  
P 027 2799 724 E ohakunehire@xtra.co.nz

**CHECK OUT OUR EXTENSIVE RANGE OF HIRE EQUIPMENT. SEE OUR WEBSITE WWW.TWEEDDALE.CO.NZ**



**PARTY HIRE:** floodlights, tables & chairs, heaters, spit roasters, wheelie bins, chafing dishes, crockery & cutlery, dehumidifier, flute & wine glasses, universal food cooker, portaloos & showers, 3-section marquee, horse float.



## Marquee Hire

**FOR THE BIG JOBS:** digger hire, cherry pickers, pumps, wood splitters, generators, car trailers, post hole borers, furniture trailer, concrete equipment, rollers & compactors, portable trencher



**Ph 06 387 5022**

### Tree & Garden Services



**Treeshape Ltd**  
Tree & Garden Management

Garden maintenance & landscaping  
Tree care and removal  
Landscape design and installation

Over two decades of experience in commercial and private tree & garden management

Fully qualified and insured

Contact us today for a free consultation or estimate – email [treeshapeltd@gmail.com](mailto:treeshapeltd@gmail.com)

**Ph 021 951 962**

### Land development

## VERSATILE BOBCATS LTD

### Bobcat+Truck Hire

### Section clearing

### Driveways Formed

*For All Your Land Development Requirements*

**Topsoil available**

**Contact Steve Gray Free Quotes**

**Ph 027 685 4854**

### Electrician

Are you looking for an electrician who:

- Turns up on time?
- Keeps his promises?
- Offers efficient service & sound advice?

**Then call Jake Fah at**



## Mountain Electrical

REGISTERED ELECTRICIAN  
Ohakune – Raetihi – Rangataua – Horopito – National Park – Whanganui

**Ph 021 770 123**



# 'Our awa is who we are': Generations paddle Whanganui River in tribal journey

Part Two of coverage of the annual Tira Hoe Waka, By Moana Ellis, Local Democracy Reporting

From pēpi to young steerers, rangatahi are at the heart of a tribal journey on the Whanganui River which sees generations of uri [descendants] paddle together in the annual Tira Hoe Waka.

Whanganui leaders say the two-week inter-generational river journey, which set off on 5 January, is building Whanganui's next leaders as iwi and hapū reclaim their place on the river.

Organiser Hayden Potaka said paddlers ageing from the minimum 12 years through to kaumātua are strengthening identity, tikanga and connection to the awa.

"The age range is deliberately inter-generational, allowing knowledge, tikanga and leadership to flow across generations."

But he and other iwi leaders say rangatahi are at the heart of the Tira Hoe Waka.

"Rangatahi are not observers, they are active participants and leaders in training."

"Through tuakana-teina relationships, responsibility on the waka, and opportunities to step into roles such as captaincy, rangatahi build confidence, discipline and a strong sense of identity that carries into wider iwi, community and professional spaces."

## Investment in people

The Tira Hoe Waka is an investment in people, capability and connection, Potaka said.

It was established nearly 40 years ago in the late 1980s to reconnect uri to the awa in a deep way – physically, spiritually, and culturally – while strengthening tikanga practice, collective care, and respect for the river and each other.

The benefits of the wānanga extend



well beyond the two-week journey, building cultural confidence, river knowledge and leadership skills, alongside strong whānau and hapū relationships that support iwi wellbeing, environmental stewardship and future leadership.

"As we move through this year's journey, the emphasis remains on unity, humility, and care paddling together, supporting one another, and honouring both our tūpuna and those yet to come," Potaka said.

While paddlers must be at least 12 years old – though more than a few have been in their 70s and 80s – young tamariki can participate with their whānau as "roadies".

Seventeen-year-old Te Taura Here Ki Te Rangi Brown said the Tira was "a must-do" for Whanganui uri.

"This is a kaupapa that we've always been coming to ever since I was a pēpi. My mum and dad always come on the Tira – it's just been a summer kaupapa."

"This is my third year paddling and my first year steering. So I'm excited."

Brown said the journey keeps her connected to the river.

"Our awa is who we are: ko au te awa, ko te awa ko au [I am the river, the river is me]. It's a good start to the pākehā New Year."

Ngā Tāngata Tiaki o Whanganui kaihautū Nancy Tuaine said this year's wānanga includes "heaps of the younger generation", with growing numbers stepping into steering and other leadership roles.

"There's far more steerers that are younger on this haerenga. There's so



Tāwhiao McMaster steers a six-man waka into Ōhinepane after the first day of paddling on the two-week annual tribal journey down the Whanganui River. Photo: Tuakana Te Tana

much succession you can see coming through within this space.

"We're going to see in the years to come the benefit of them embracing the awa, taking up responsibilities and roles, how that comes to fruition

as people seek to take leave from the responsibilities of co-ordinating the Tira and leave it for others."

The 14-day Tira included 11 days paddling and two rest days at ancient marae sites on the river.

It left from Ngā Huinga near Ngāpuwaiwaha Marae in Taumarunui on 5 January 5 and arrived at Te Ao Hou Marae in Whanganui on 19 January.

LDR is local body journalism co-funded by RNZ and NZ On Air



## Experts ~ at your service

**Plumber**

**Plumber Dan**  
Plumbing, Drainage, Gas & Building

Looking for a dependable local plumber in your area?

Count on our skilful local Ohakune plumber for all your maintenance plumbing requirements. Whether it's a leaking pipe or a blocked drain, we deliver quality service with fair pricing in the Ohakune & surrounding areas.

Don't hesitate, get in touch with us today!  
office@plumberdan.co.nz

**Ph 021 635 517**

**Ohakune Landscape Supplies**

- Huge range of Pebbles
- Mulch
- Bark
- Pea Straw
- Builders mix
- Sand
- Topsoil
- Bagged Garden Fertilisers
- Rail & Mac Sleepers

~ Call to arrange supply ~ FREE loan trailer ~  
~ eftpos available ~  
Email: Ohakune.landscape@gmail.com

**Ph 0800 926 315**

**Earthworks**

**HAITANA EARTHWORKS**

14 tonne digger  
14 tonne wheel digger  
Tip truck  
Supply of metal, scoria and boulders

**Farm work, section & driveways, rock walls**

**Ph 027 289 4404**

**Gas Fitting**

**Plumbing & Gasfitting**

Cut down on your power bill. Go gas hot water & heating – supplied and installed. Call for a consultation.

Phone Denise 027 482 7488 or  
Email  
accounts@aplumbingandgas.co.nz

**Ph 06 343 6866**

**Auto Services**

**AUTO SERVICE CENTRE**

Authorised Holden Service Centre

Full workshop services for all vehicles, wheel alignments, computer diagnostics, warrant of fitness inspections, parts, batteries, engine oils.

**84 Clyde Street, Ohakune**  
After hours 027 448 4080  
autoservicecentre@hotmail.co.nz

**Ph 06 385 9222**

**Plumbing / Drainlaying**

**B&M PLUMBING LTD**

- Plumbing & Drainlaying
- Pumps - sales, servicing & installation of all pumps
- Fires & Solar
- 5 Ton Digger with Augers, Ditchwitch & Tip Truck

"Your local Registered Certifier"

Call Brian 027 436 1075  
Email: bmfred@xtra.co.nz

**Ph 06 385 4718**

**Auto Services**

**RUAPEHU MOTORS**

Locally owned and operated by mechanic Daniel Norris.

WOF \$75 car, \$45 trailer

**Ruapehu Motors**  
Cnr Seddon St and Valley Rd, Raetihi.

For enquiries, please phone Daniel

**Ph 027 863 7454**

**Upholsterers**

**Westlorne**

- Furniture Upholstery
- Vehicle Upholstery
- Tarpaulins • Canvas & Leather
- Shade sails • Saddlery

Factory, SH49, Tangiwai, Ohakune.  
Mobile 0274-467-289 Fax 06-385-8483  
email: westlorne@xtra.co.nz  
www.westlorne.co.nz

**Ph 06 385 8487**



# Rescue chopper seeks night goggles help

From Page 2  
jeopardised.

The chopper's pilot and base manager says "without Night Vision Goggles, some missions simply aren't possible. NVGs give our crews the confidence to fly safely at night - spotting risks like tall trees, ridgelines, cloud and remote terrain just as clearly as in daylight."

Not long ago, Mike headed out in the morning for a 3-hour kayak on the Tongariro River. After he'd completed

the more difficult white-water section, Mike came to a split in the river, he accidentally drifted to the wrong side...

"My kayak got broached on a rock, and so I stood up. As I grabbed my paddle, the boat slipped out of reach."

He tried to swim after it but soon realised the water was far too rapid and dangerous to swim in.

All it took was a moment, and Mike was left stranded on the scrubby river beach. With his phone and bag in the kayak, he had no way of contacting anyone for help, and

no way out.

Mike was getting colder, despite good gear and some spare clothing. The temperature dropped noticeably when the sun went down and was forecast to fall to zero that night.

Back at the meeting point, his family were anxiously waiting for Mike to arrive.

Hours ticked by, and he still didn't come. Feeling utterly helpless and worried, Mike's wife dialled 111.

Although Mike wasn't injured, he was in grave danger of hypothermia. People often underestimate how deadly hypothermia can be - but the truth is that each passing hour only put Mike in greater danger.

But as he huddled on the riverbank, shivering, Mike heard a loud noise and saw a bright light in the sky. Mike couldn't believe it.

"I didn't think anyone would come out in the dark. I got up and waved, but I wasn't sure they saw me or not. They seemed to hover for what seemed like an eternity."

Finally, the lights moved closer, and Mike saw something moving in the shadows above.

"The flight paramedic was being winched down. He wanted to make sure I was ok, and I told him, 'I'm fine, I'm just cold.'"

"He got his winching gear out, and I got

wired up. As we went up, I had no sense of height... all I could see was the rescue helicopter lights getting closer."

As soon as he got inside the helicopter, Mike instantly felt warmer. But it wasn't enough. Understandably, the Critical Care Flight Paramedic was extremely concerned about hypothermia. He gave Mike hand warmers, which made a huge difference in bringing up his body temperature.

And when they landed a short while later at a nearby airfield, Mike was greeted with tears of joy by his wife and brother-in-law.

Bringing loved one's home after dark - that's what the new E3 Night Vision Goggles will empower the rescue helicopter crew to do.

"To make this possible, we urgently need to raise \$102,000 to purchase three new pairs of NVGs for the crew."

These E3 Night Vision Goggles offer exceptional clarity and comfort during long missions, reducing fatigue and enhancing crew safety; provide a full, rimless field of vision; enable the crew to spot obstacles such as tall trees, ridgelines, clouds, and remote terrain - ensuring safer flight operations

Donations can be made at [give.rescue.org.nz/event/greenlea-rescue-helicopter/donate](http://give.rescue.org.nz/event/greenlea-rescue-helicopter/donate)

## ENTER TO WIN!!!

**PRIZE VALUED AT OVER \$1000**

Simply email your answers to: [ads@ruapehubulletin.co.nz](mailto:ads@ruapehubulletin.co.nz) to go into the draw!

**Question 1: What is the length of the Te Ara Mangawhero bike trail.**

**Question 2: What is the longest distance running event in the Ruapehu district.**

**Question 3: Complete the phrase "Plan a visit ...."**  
(Hint - it's in an advertisement)

**Provide your name, phone and email with your answer.**

**All correct entries will go into the draw to win!**

Entries must be received by Thursday 12 February. Prize drawn on 14 February 2026.

**PRIZE INCLUDES:** Ohakune Hot Tubs voucher for two; two nights accommodation at Rocky Mountain Chalets (subject to availability); dinner at No. 8 Restaurant; entry to the National Army Museum; Whakapapa Sky Waka ride; Tongariro Crossing Shuttles transport to Tongariro Alpine Crossing (conditions apply) and Kune Shuttles ebike hire (or normal bike) including shuttle to Ohakune Old Coach Road / Te Hangaruru & a Vertigo climbing session.

Unless advised, your email address will be added to our online subscription to Ohakune. info

**Kune Shuttles & Bike Hire**









**Tongariro Crossing Shuttles**






## CLASSIFIEDS

**Deadline 5pm Friday.**

**Phone 06-385-8532.**

**Email: [ads@ruapehubulletin.co.nz](mailto:ads@ruapehubulletin.co.nz)**

FOR SALE	BUSINESS NOTICES	PUBLIC NOTICES	SITUATIONS VACANT
<p><b>FIREWOOD 4 SALE – SPLIT OLD MAN PINE.</b> Summer special, \$80 per cube delivered local. Extra for outside area. 2 cube per order. TXT/Call Jock 0273 602 700.</p> <p><b>FIREWOOD LOGS 4 SALE.</b> Pine logs and mixed logs, 5 ton or 2.5 ton truck loads. Call/TXT Keith 021 055 4794</p> <p><b>WATER TROUGHS,</b> cattle or sheep. Different sizes. Delivered price quoted. Ph 0800-487-633.</p>	<div style="border: 1px solid black; padding: 5px; margin-bottom: 10px;"> <p style="text-align: center;"><b>Ohakune Health Hub</b></p> <p style="text-align: center;"><b>In pain? Let us help.</b></p> <p>Experienced care in Osteopathy, Physiotherapy, Massage and Acupuncture – effective treatment for:</p> <ul style="list-style-type: none"> <li>- Musculoskeletal pain - headaches &amp; concussion - post-operative recovery - and much more.</li> </ul> <p style="text-align: center;"><b>ACC registered   77-79 Clyde St, Ohakune</b> <b>Book online: <a href="http://www.ohakuneosteo.co.nz">www.ohakuneosteo.co.nz</a></b></p> </div> <div style="border: 1px solid black; padding: 5px; margin-bottom: 10px;"> <p style="text-align: center;"><b>NEED ADVICE?</b></p> <div style="display: flex; align-items: center; justify-content: center;">  </div> <p style="text-align: center;">Contact the CAB on 07 878 7636 or email: <a href="mailto:tekuiti@cab.org.nz">tekuiti@cab.org.nz</a></p> </div> <div style="border: 1px solid black; padding: 5px;"> <p style="text-align: center;"><b>Bennett's Tank Cleaning Services</b></p> <p style="text-align: center;">Septic tanks, water tanks, grease traps.</p> <p style="text-align: center;">Call us for fast efficient service.</p> <p style="text-align: center;">Phone Chris on 06-388-0452.</p> </div>	<div style="border: 1px solid black; padding: 5px; margin-bottom: 10px;"> <p style="text-align: center;"><b>MEETINGS</b></p> <p>The following meetings of Horizons Regional Council (Livestreamed) will be held during <b>February 2026</b> in the Tararua Room, Regional House, 11-15 Victoria Avenue, Palmerston North, unless otherwise advised:</p> <p><b>Tuesday, 10 February</b> 10.00am Strategy and Policy Committee</p> <p><b>Wednesday, 11 February</b> 9.30am Integrated Catchment Committee</p> <p><b>Tuesday, 24 February</b> 9.30am Regional Council</p> <p><b>Wednesday, 25 February</b> 9.30am Audit, Risk &amp; Investment Committee</p> <p>Should Members of the public wish to speak at Meetings, they are advised to phone 0508 800 800.</p> <p style="text-align: center;">M J McCartney <b>CHIEF EXECUTIVE</b></p> <div style="display: flex; justify-content: space-between; align-items: center;">   </div> </div>	<div style="border: 1px solid black; padding: 5px; margin-bottom: 10px;"> <p style="text-align: center;"><b>SALESPERSON/FRONT OF OFFICE POSITION</b></p> <p>We have a varied, hands on role, suited to someone who enjoys customer interaction, problem solving and working in a practical retail and engineering environment.</p> <p>Full time position, Monday to Friday, 7am – 4pm</p> <ul style="list-style-type: none"> <li>• Front of house customer service for workshop and retail sales</li> <li>• Supporting customers with product enquiries and solutions</li> <li>• Day to day store operations</li> <li>• Experience or knowledge in engineering and or mechanical products will be highly regarded.</li> </ul> <p><b>KEY RESPONSIBILITIES</b></p> <ul style="list-style-type: none"> <li>• Be the first point of contact for customers entering the store</li> <li>• Deliver professional, friendly and efficient customer service</li> <li>• Process sales using point-of-sale systems</li> <li>• Liaise with suppliers and support teams via phone and email</li> <li>• Maintain store presentation and stock displays</li> <li>• Manage stock levels, including receipting and dispatching goods</li> </ul> <p><b>ABOUT YOU</b></p> <ul style="list-style-type: none"> <li>• Previous experience in retail sales, customer service, or a similar role</li> <li>• Engineering, mechanical or trade-related knowledge is an advantage</li> <li>• Strong communication and interpersonal skills</li> <li>• Positive, team focused attitude with strong attention to detail</li> <li>• Honest, reliable and committed to quality service</li> </ul> <p>This position description is a guide only and may include additional duties as required by management.</p> <p><b>Application details</b> Contact Bruce Cranston on 027 444 2058 for more information.</p> </div> <div style="border: 1px solid black; padding: 5px;">  </div>
<div style="border: 1px solid black; padding: 5px; margin-bottom: 10px;"> <p style="text-align: center;"><b>BUSINESS NOTICES</b></p> </div> <p><b>RAILWAY MUSEUM &amp; OP SHOP.</b> Open 10am-2pm Thursday - Sunday. 62 Thames St, 100m past Railway Station. Sponsored by The Ski Shed.</p>	<div style="border: 1px solid black; padding: 5px; margin-bottom: 10px;"> <p style="text-align: center;"><b>UNVEILING</b></p> </div> <p><b>LEO PUNCH &amp; KAREN TUKAIORA HAYDEN (nee Williams).</b> The unveiling for Leo and Karen will be held on 7 February at the Raetihi Cemetery at 11am. A 'hakere' at the Centre in Seddon Street will follow at approximately 1pm. For further information contact Bill Hayden at 027 220 4771.</p>	<div style="border: 1px solid black; padding: 5px; margin-bottom: 10px;"> <p style="text-align: center;"><b>Ruapehu Mayor Weston Kirton</b></p> <div style="display: flex; align-items: center;">  <div style="margin-left: 10px;"> <p>To arrange a meeting or call back, please phone Council on 06 385 8364 or email: <a href="mailto:kay.kidd@ruapehudc.govt.nz">kay.kidd@ruapehudc.govt.nz</a></p>  </div> </div> </div>	
<p><b>Deadline for all advertising bookings and copy is</b></p> <h2 style="margin: 0;">5pm Fridays!</h2> <p><i>It's important that we get your ad booking and copy in on time, so that we have time to check it, plan the best layout and work on producing a better paper for you!</i></p>			
<div style="border: 1px solid black; padding: 5px; margin-bottom: 10px;">  <p style="text-align: center;"><b>Hey kids – need extra pocket money?</b></p> <p>The Ruapehu Bulletin requires Wednesday morning deliverers in Ohakune.</p> <p style="text-align: center;">Phone Robert or Jude on 06-385-8532.</p> </div> <div style="background-color: #007bff; color: white; padding: 10px; text-align: center;"> <p>For everything Ohakune, visit <b><a href="http://www.ohakune.info">www.ohakune.info</a></b></p> </div>			



## COVERS

53 Clyde St, Ohakune Phone 58-915

### UPHOLSTERY

•Cars •Furniture  
•Boats •Tarpaulins

### IMPORTED

•Cane Furniture •Brassware  
•Floor Rugs •Handcrafted  
Lampshades

(Latest Curtain Fabric Samples)

## WAIMARINO

# BULLETIN

VOICE OF THE RUAPEHU REGION

Tuesday 21 January, 1986. Volume 3 No. 32

## HURLSTONE

Earthmoving Limited

PLANT HIRE OR  
CONTRACT

Specialists in Land  
Development, Drainage,  
Roading Construction &  
Ready Mixed Concrete.

Phone 58-083 Ohakune

## Change means power price up

The Winstone Samsung Industries Ltd Pulpmill at Karioi has been offered direct power supply by the Ministry of Energy's electricity division as from 1 April this year.

Winstone Samsung and the King Country Electric Power Board have been negotiating for some time over what the mill considered unfair pricing.

Several large industrial companies including Winstone Samsung had been given the option of negotiating better prices from power boards or receiving direct supply from electricity division, in last year's June budget statement.

The general manager of the KCEPB, Mr Neville Sanders, said that it had not really been a negotiating situation with the government in the background offering direct supply.

"We have supplied Winstone Samsung since 1978

and have had to establish staff and facilities for that supply and this can't be dismantled overnight.

"Other consumers will therefore have to pay an extra \$30 a year on the average which will come on top of the 15 per cent increase in bulk electricity cost charged by the government from 1 April," said Mr Sanders.

Mr Klas Kronqvist, general manager of Winstone Samsung Industries Ltd, said the extra \$30 charge proved that the mill had been subsidising other consumers.

"As an exporter we cannot do this when we export all our production and have to face world prices which are unrelated to New Zealand internal prices," he said.

Mr Sanders however denied that other consumers were subsidised by Winstone Samsung.

"Why should that consumer receive electricity at very favourable rates and not contribute to distribution costs in the community in which it is domiciled when other consumers have to pay?" he said.

Mr Sanders said the direct supply policy appeared to be an attack by the government on domestic and small business consumers to the advantage of big business.

Mr Kronqvist said that direct supply might not be taken on 1 April when it was offered as arrangements had to be made to transfer electricity from the electricity division's substation.

## Poor response kills course

The ambitious National Park summer school programme planned by the Rural Education Activities Programme (REAP) for January this year was almost entirely cancelled due to lack of interest.

The programme was to cover a wide range of subjects including dance, drama, current affairs, arts and crafts, but in the end only the sailing courses on Lake Taupo went ahead.

## Volcanic antics at Whakapapa



Colin Saul of Stokes Valley gives seasonal interpreter Linda Skates a hand with a papier-mache volcano at Whakapapa Village during one of the summer nature programme children's sessions last week. Up to 40 children enjoyed many activities including tree planting, a blindfold trek and a Maori myth drama.

## Major works at Raurimu

The great Raurimu Spiral, where the main trunk railway line curves on top of itself in a massive loop, was the scene of major reconstruction recently when the floor of the two tunnels was lowered about two metres to allow space for the overhead gear and pantographs required for electrification of the main trunk line.

For a 12-day period early in January trains were rerouted or limited while between 5 and 10 January the rails were pulled up in long sections and passengers were carried between Ohakune and Taumarunui by bus.

The Raurimu work was part of a major logistical exercise where 12 different projects between Mangaweka and Taumarunui were carried out.

These ranged from tunnel floor lowering, such as at the Raurimu Spiral, through major bridge upgrading, curve easements and bridge replacement.

Murray Gilbertson, Railways Assistant District Engineer from Wanganui, said the work between 3 and 15 January was the most concentrated volume of work undertaken in the whole of the main trunk line electrification project, and involved over 300 staff and more than 70 earthmoving machines.

"It was very demanding logistically because the different projects were so spread out," he said.

As well as the complexity of the projects workers had to contend with early January's heavy rain which led to drainage problems in the Raurimu tunnels.

The 1 in 50 grade, the steepest on the main trunk, meant that the water flowed straight into the tunnels turning the soft local rock into a quagmire.

In a nightmarish atmosphere inside the tunnels bright lights cast long shadows as huge roaring machines dragged at either soft puggy material, or rocks as big as people, while new drainage systems were laid.

## Name your own street?

Cr John Compton told councillors at last Wednesday's Raetihi Borough Council meeting that few Raetihi street names are relevant to local people.

He said the street names at present reflected the old New Zealand trend using names of New Zealand historical figures.

He suggested street names should be those of well-known local people, such as established Maori families and old identities.

Cr Punch jokingly suggested 'Punch Parade' and Cr Keith Haitana suggested 'Workman Wroundabout'.

It was decided that it would be impracticable to change existing street names.



No place for claustrophobics! When the floors of the tunnels on the Raurimu Spiral were lowered to accommodate overhead gear for electric trains heavy rain and large earth-moving machines made working conditions wet and noisy.

## MOBILE CURTAIN SHOWROOM

Our mobile curtain showroom and experienced home consultant Mrs Dixie Ander is regularly in your area. For a completely free of charge and no obligation visit contact Wanganui 57-778 (collect) or the Raetihi Hotel 54-016. We can advise on all aspects of home decoration, all our work is guaranteed and remember to enquire about our special offers on all customer orders.

PHONE NOW FOR AN APPOINTMENT



148 Guyton St, Wanganui  
Open Saturday Mornings



NEWS  
58-681

Your Community Newspaper

ADS  
58-532



# No kidding: local goat numbers bloom

From Page 4

special mention — for coaching and for the way they ensured every participant had a great start and finish line experience, thanks to their MC mastery.

“We live in such an incredible part of the world and being able to experience the raw and beautiful terrain on our doorstep is something I will try never to take for granted. Being able to ‘run’ and scramble through this landscape was an absolute privilege.

“Every time I found stable footing and managed to lift my eyes from the trail, I

was in awe. While the challenge pushed me physically and mentally to my limits, I don’t think the smile ever left my face.”

She praised the Goat Tongariro team. “Being greeted by friendly, familiar faces was pretty special, and I have no doubt others from all over received the same warm welcome.

“The finish line photos capture the genuine joy you have for others’ success. I felt ‘at home’ the entire time, and like I belonged in something that for many years had felt unachievable.”



Some of the locals lining up: second from left, Ben Swift, who was the fastest local home, Alex Gilbert – a past fastest local Goat, and Sean Jones.



Leah Sims and Stacey Dalziel cross the finish line at Tūroa Ski Area base. Photos: Liz Brooker.



Emma Young from the Ohakune Events Charitable Trust helps The Goat mascot to the supporter line while competitors get ready to run.



Innocent Mahlatini Ruapehu College teacher, is very happy at the start of the gruelling run.



Rita Hammond – stepping up for The Goat along with around 15 friends and family.

## True Team Promise means our whole team works for you.

Contact your local Ohakune Consultant today!

Cameron Elliot  
Sales Manager  
Taumarunui/Ohakune  
027 542 1009

Alan Blackburn  
Rural/Lifestyle  
027 203 9112

Polly Ingles  
Residential/Lifestyle  
027 315 8368

Jenna Hovelle  
Residential/Lifestyle  
027 361 0167

Jody Milham  
Residential/Lifestyle  
027 426 4322

Mere Haitana  
Branch Administrator  
06 385 4466

Ave-Elise Adams  
Property Manager  
027 370 0914

Scan the QR code to find us on Facebook

PropertyBrokers<sup>B</sup> Proud to be here

pb.co.nz  
Property Brokers Ltd Licensed REAA 2008  
Q022738