

Ruapehu Bulletin

P: 06 385 8532 E: ads@ruapehubulletin.co.nz



STRANGE DOG
print | digital | retail

06 385 9320 | info@strangedog.design



Facelift for nowhere bridge
P3



Fire, crash deaths linked
P3



War without weapons on film
P6



Ruapehu's newest citizens
P8

Iwi-led partnership delivers 10 new homes in Ohakune



The families and their wider whānau, friends and other uri of the Ngāti Rangī iwi – as well as other guests, gathered to witness the individual blessing of 10 new houses in Ohakune from 5am on Sunday.

Ten Ngāti Rangī whānau will this weekend step into warm, secure homes as Korokio, a new housing development in Ohakune, was formally blessed and opened on early morning Sunday.

The development, led by Ngāti Rangī in partnership with Ka Uruora, has delivered ten brand-new homes for uri of Ngāti Rangī – creating affordable, quality housing for whānau within their own rohe.

Kemp Dryden, chair of Te Kūmete o Paerangi (Ngāti Rangī's commercial entity) said the development represents far more than bricks and mortar.

"A home is the foundation for whānau wellbeing. It means warm, dry bedrooms for tamariki, space and privacy for growing whānau, and stability. For our people, it also means being able to live on our whenua, in our own community, connected to our whakapapa."

Korokio comprises ten three-bedroom, two-bathroom homes, with rental rates tailored to whānau income.

Accessible housing was also considered in the design brief. The homes were developed specifically for uri of Ngāti Rangī in response to acute local housing need – something that Dryden says is an ongoing problem.

"As an iwi, we are deeply concerned by the shortage of affordable housing for our whānau, within our own rohe. In 2024, we stepped up ourselves and funded four homes in Ohakune because our people could not wait. Support from the Ministry of Housing and Urban Development has allowed us to build ten more homes at Korokio, and we believe continued government backing will be essential if more whānau are to access homes like these."

Frustrations

Pou Ārahi (chief executive) of Ngā Waihua o Paerangi, Helen Leahy, shared some of the frustrations in the journey to date.

"Our aspirations have always been clear; mā te mahi tahi e tū ai te pā ora: working together to build a kāinga

Turn to Page 2

Damp roads, damp gear but no damp spirits for the Gutbuster

Rain could not dampen the spirits or enthusiasm of participants and supporters at the Ride Holidays Raetihi Gutbuster run/ride/walk event on Saturday.

Runners and riders were grinners as they crossed the finish line – perhaps because they could then get out of the rain but mostly because they had enjoyed the challenge.

Organised by Raetihi Promotions Charitable Trust and based at the Waimarino Museum, the event attracted cyclists, runners and walkers from the Ruapehu District as well as the length and breadth of the North Island and even a cyclist and a runner from France.

The inaugural Raetihi 88km road bike ride proved a worthy addition to the already popular line up of events – the 52km Gutbuster Classic, 20km Valley Spin, Waipuna Challenge half-marathon and the 5km Raetihi Rambler. There were 191 participants over the five events.

According to the winner of the 88km ride, Johnny Newman of Wellington, the fantastic scenery and challenging course made it a great ride and he completed it in three hours and four minutes.

He said road ride competitions are decreasing in number and he was pleased, and surprised, to see that the Raetihi 88 had a good number of entrants.

Forty-five riders took part in this event which started at the Parapara end of the Whanganui River Road, through to Pipiriki for the climb back up to Raetihi.

Ride Holidays director Karl Woolcott was also full of praise for the new ride, and the Raetihi Gutbuster as an event.

"It's not just about racing but about the ride, the scenery and community of people you meet on the whole journey," he said.

"I thoroughly enjoyed the day and seeing this beautiful area of New Zealand

Turn to Page 12



Johnny Newman, winner of the 88km ride, in 3:04:04. He is pictured with Shane Billington who rode the shepherding motorcycle ahead of the cyclists, and Joanna Thomson who was very busy handing out medals to all finishers in the eight rides and runs. Photo: Robert Milne.



AUTUMN ALERT

THE MARKET IS MOVING, DON'T MISS OUT.

BAYLEYS

BARTLEY REAL ESTATE LTD, BAYLEYS, LICENSED UNDER THE REA ACT 2008

As the Ruapehu landscape turns to rich hues of orange, red and gold, buyer enquiry strengthens across the region. Autumn is a strategic time to be on the market, with motivated purchasers planning ahead to secure homes before winter. Listing now gives your property strong visual appeal, access to engaged buyers, less competition than peak summer, and momentum leading into winter demand.

Altogether Better to make smart property decisions this autumn.

Bayleys Ruapehu

06 385 0170 | 16 Goldfinch Street, Ohakune

Visiting the Ruapehu District

By Carl Bates, Member of Parliament for Whanganui
It is busy in the Ruapehu District at the moment. On Sunday morning, Associate Minister of Housing Hon Tama Potaka opened Ngāti Rangī's housing initiative for uri.

Kemp Dryden, chair of Te Kūmete o Paerangi (Ngāti Rangī's commercial entity) said the development represents far more than bricks and mortar.

"A home is the foundation for whānau wellbeing. It means warm, dry bedrooms for tamariki, space and privacy for growing whānau, and stability."

This is a wonderful initiative by Ngāti Rangī, who have built ten three-bedroom, two-bathroom homes, in partnership with the Ministry of Housing and Urban Development and private contractors. This is an excellent model for the provision of housing for whānau.

Tourism is also important to the economic growth of the Ruapehu region. Founded by Susan Delaney, Ruapehu Distillery is using the best ingredients from around the district to, as their website says, "push the boundaries of what spirits can be".

Susan is certainly pushing the boundaries with a gin made from Ohakune's signature ground crop, carrots. Locally distilled from locally grown carrots, along with juniper berries and a hint of horopito, it is "out there". The product is named Straight Up Gin, and it is certainly unique, and one I enjoyed.

At the Taste Festival over Easter, Susan won over some palates and got people talking. That's good news both for

Ruapehu Distillery and for the region in general, as more domestic and overseas tourists visit, and spend.

On the same trip I caught up with Ruapehu District mayor, Weston Kirton over a cuppa. We are building a strong working relationship.

A shout-out to the Civil Defence and Emergency Management staff at Ruapehu District Council, the community, our emergency response people and volunteers, for their response to the flooding event at Ōhura over the weekend.

Unlike Cyclone Vainu last weekend, the heavy rains on Saturday afternoon and evening had received less advance publicity, but RDC staff and the community responded with urgency.

Lastly, I will be in Ohakune on Saturday for the town's Anzac Day service at the Memorial Gates in Clyde Street. Provincial New Zealand was disproportionately represented in the casualty figures in both World Wars, and our annual Anzac Day ceremony is a time for remembrance of the sacrifices made by so many. Lest we forget.



Carl Bates, MP, pictured with Ohakune's distiller Susan Delaney.

Ruapehu Events & What's On

APRIL 2026

Royal Theatre Movies, starts 7pm
Soldiers Without Guns (M) 25 April

MAY 2026

Vintage & Classic Auto Show 31 May
For more information email autoshow.at.the.park@gmail.com

JULY 2026

Mardi Gras 4 July

Tūroa Opening Day 4 July
See www.turoa.com for details

Whakapapa Opening Day 4 July
See www.whakapapa.com for details

Matariki 10 July

For all your ski board and bike rental needs

TCB

Ski, Board & Bike
Cnr Ayr St & Goldfinch St, Ohakune
06-385-8433 tcb.nz

FOR MORE DETAILS, GO TO OHAKUNE.INFO

IT'S FREE TO LIST SO PLEASE LET US KNOW IF YOU
HAVE AN EVENT COMING UP ...
ADS@RUAPEHUBULLETIN.CO.NZ
LINK YOUR EVENT TO EVENTFINDA FOR FREE

Ruapehu Bulletin

ISSN 1170-1676 (print)
ISSN 1178-7406 (online)

Published by Ruapehu Media Ltd

Phone (06) 385 8532

56 Clyde St, Ruapehu Colab office, Ohakune.

Ruapehu's only locally owned weekly community newspaper. Established 1983.

Reaching homes every Wednesday in Ohakune, National Park, Raetihi, Waiouru and surrounding rural areas.

Publishing Editor:

Robert Milne – robert@ruapehubulletin.co.nz

Advertising Rep:

Jude Chevin – ads@ruapehubulletin.co.nz

Printed by NZME, Auckland

Advertising Deadline 5pm Friday

Iwi-led partnership delivers 10 new homes in Ohakune

From Page 1

and thriving communities. To that end, over the last five years we have negotiated fit-for-purpose solutions with a range of agencies that included emergency housing; social housing (the Teitei Drive development); Papakainga housing; worker accommodation and transitional housing.

"However, as government modified the policy levers these opportunities were no longer available to us. We saw the impact of those changes in the hearts and minds of our community; it erodes hope; some whānau had no alternative but to leave the region. We carry those experiences with us into Korokio; it drives our determination to do better for our families".

Ka Uruora chair Jamie Tuuta said Korokio is an example of what can be achieved when iwi are empowered to lead housing solutions for their own communities.

"Iwi know their people, they know their housing challenges, and they know what solutions will work. Korokio shows the power of iwi-led housing when the right partnerships and investment are in place."

Ka Uruora partners with iwi across Aotearoa to deliver housing solutions for whānau, supporting iwi-led developments, from planning through to delivery. Tuuta said the success of Korokio also highlighted the scale of unmet need still facing whānau across the country.

"The demand for safe, affordable housing remains significant. Projects like Korokio prove what is possible – but they also remind us how much more could be achieved if iwi-led housing initiatives received sustained and adequate investment."

The development was delivered in partnership with the Ministry of Housing and Urban Development, Egmont Dixon and TW Group.

The whakanoa ceremony took place on Sunday morning, with whānau, project partners and Associate Minister of Housing Hon Tama Potaka in attendance.

Korokio background

The name of the block of land that the subdivision sits on is called Rangataua.

Rangataua was also the name of a demi-god who lived in the clouds. He was a famous warrior and his weapons were rain, hail, snow and lightning. Te Mokai o Rangataua (a lenticular cloud formation – also known by locals as the 'Rangataua Pet') was his waka which would transport him. Ngāti Rangī would call upon Rangataua to fight for the tribe.

The name of the stream that runs through the subdivision is called Korokio Stream. Korokio is a sash usually made out of wae-waekahu vines that is worn across the body. It is worn as a sign of great respect for a person who has contributed significantly to the tribe when they pass.

The subdivision has a small wetland; all wetlands are of great importance to Ngāti Rangī as habitat and spawning grounds for native plants, birds and fish. Raupō Lane leads to the wetland where the raupo is growing in abundance.

Te Ara Rewarewa or Te Ara Rewa reflects the Rewarewa plant (honeysuckle) which was once abundant in this area.

The brand-new houses are in Kowhai Crescent, Raupō Lane, Shannon Street and Te Ara Rewa Lane.



Ngāti Rangī uri and guests pictured outside the last house to be blessed on Sunday morning.

Eating out in the Ruapehu District

Call 06 385 8532 to list your business here
or email ads@ruapehubulletin.co.nz

KINGS BAR & RESTAURANT

3 Rimu St Ohakune Junction Ph: 06 385 8648

Est in 1913, historic Kings offers an inviting menu by international chefs, a great selection of boutique wines and craft breweries including award winning Ruapehu Brewing Co beers in the fridge and on tap. See our Facebook page for what's on. Please check our open times as these will vary.

LA PIZZERIA

6 Thames St, Ohakune Junction Ph: 06 385 8558

Ohakune's most famous pizza restaurant. For over 35 years, we've been serving Ohakune's best pizza. Come up and see us in the "Junction" at the end of the Old Coach Road and try one of our hot, tasty, handmade pizzas. Same great menu available for takeaway. Open 7 days, 4pm – late. www.lapizzeria.co.nz

LKNZ LODGE & CAFE

1 Rata St, Ohakune Ph: 027 257 LKNZ (5569)

Open every day. Menu includes our delicious big breakfast, creamy mushrooms, homemade soups, wedges, nachos, toasties, waffles and more ... Volcanic coffee, muffins & scones, real fruit smoothies and thick shakes. Dine in or takeaway. Onsite parking. www.lknz.co.nz

POWDERKEG

Bottom of the mountain road Ph: 06 385 8888

For over 35 years, The Powderkeg has been serving up exceptional food and service in a warm, welcoming atmosphere. Whether you're enjoying a sunny afternoon on our spacious balcony or indulging in our weekly specials like Sushi Fridays and Smokehouse Sundays, there's always something to look forward to. Join us for an unforgettable dining experience and follow us on Instagram @ powderkegbar for the latest updates and mouthwatering offers! Open daily 7am till late

THE CYPRUS TREE

79 Clyde St, Ohakune Ph: 06 385 8857

Check out our new menu. Kiwi craft beers, boutique wines and cocktails to quench that thirst. Playroom for the kids, foosball, air hockey and spaces to keep the kids entertained. Spectacular mountain views. A great place for casual get togethers or special occasions. Open every day.

UTOPIA CAFE

47 Clyde St, Ohakune Ph: 06 385 9120

Open 7 days from 8am – 3pm for all day breakfast and lunch. Serving Havana Coffee. A cosy memorable atmosphere with a great range of cabinet food and beverages, Frappé and smoothies. Vegan/Gluten-free options for both savoury and sweet are available. Speedy free Wi-Fi! A perfect place for everybody!

RAETIHI GUT BUSTER 2026 Thanks

We could not have made this event happen with the generous sponsorship and support from these businesses and organisations. Thank you all very much.

Andrew Greenwood
Caltex Raetihi
Dempsey Buses
Frankly Done
Glyn Hubbard Photography
GM & SM Deadman
J Preston Trust
Kim Young & Sons
Kings Restaurant
LKNZ Lodge & Cafe
Lotteries Grants Board
Lyon Electrical
Manuka Lodge
Matahiwi Cafe
Mott's Premium Produce
Mountains to Sea
No. 8 Restaurant
Ohakune Events Charitable Trust

Ohakune New World
Opus Fresh
Peak FM
PGG Wrightson
PKF Doyle & Associates
Plateau Lodge
Pure Tūroa
Rice Restaurant
Ride Holidays
Ruapehu Bulletin
Ruapehu Distillery
Ruapehu District Council
Taihape & Ruapehu Vets
Taura Metal Supplies
TCB
Tongariro Water
Vertigo Climbing
Visit Ruapehu

Cathy Rogers and the
Raetihi Gutbuster team

RAETIHI-GUTBUSTER.COM

Facelift for remote Bridge to Nowhere



Contractors hang off the side of the Bridge to Nowhere to carry out pre-emptive repairs to lengthen the life of the structure. Photos: DOC.

Visitors to the remote Bridge to Nowhere near the Whanganui River were recently surprised to find abseilers working on the isolated structure.

At nearly 90 years old, heritage icon the Bridge to Nowhere owes its enduring stature to a regular beauty regime, with a recent 'facelift' the latest treatment.

Department of Conservation project lead Michael Christie says it's ironic the bridge has become such a popular destination with visitors.

"It's remote, a relic of past settlements, standing alone in otherwise dense bush – and the Bridge to Nowhere has become somewhere to see.

"But with that comes the challenge of maintaining a structure in the middle of nowhere," says Michael.

"It's a 1-hour jetboat trip from the nearest town, with a 40-minute walk into the bridge itself."

"For this mahi, we've flown contractors in and set them up with a bit of a campsite while they're working here. This isn't a go-home-to-a-soft-bed kind of job!"

Over time, moisture seeps into concrete and causes rust in the supporting rebar. DOC has a regular maintenance schedule to keep the bridge in good condition.

Site foreman Vincent Smith says the process is fairly straightforward, with a few additions to protect the heritage bridge and natural environment.

"We're marking, breaking it out, sand blasting the steel and treating it with a rust barrier. Then we fill it back in with a repair mortar.

"Structurally, the bridge is still very sound, so we're really doing this work to ensure it remains that way for many years to come.

"The main challenge for us hasn't been the remoteness but managing the visitors who have been coming through the active worksite. They've been really interested in our work though, which is neat – it's something a bit different for visitors."

Vincent has had the pleasure of returning to the Bridge to Nowhere as foreman for these recovery works 20 years after first visiting as a labourer.

"It's been cool to come full circle on this in my career," says Vincent.

Michael says the refreshed Bridge to Nowhere is fully open to visitors in time for Conservation Week on 20 to 26 April.

"The bridge is remote, but not out of reach. Whether you catch a jetboat or cycle through, take a side trip from the Whanganui Journey or head out tramping, it's a truly unique place for your naturing adventures."

Rangataua fire & car fatalities linked



Fire completely engulfed a house in Kaka Street, Rangataua, on Thursday night. Investigators later found a deceased person in the building.

Investigators undertaking a scene examination at a house fire in Rangataua located one person deceased on Friday afternoon, following Fire and Emergency New Zealand

(FENZ) attending the house fire on Kaha Street at around 6.40pm on Thursday 16 April.

Turn to Page 5

We're fixing the basics
and building the future.

Carl Bates MP
National Party Candidate
for Whanganui

incl Ruapehu - South Taranaki - Stratford

National

Authorised by Carl Bates, 200B Victoria Avenue, Whanganui.



SPECIAL!



Bring your Motor Bike in and get free fitting **for April and May 2026**,
When you buy a new set of tyres from us! (Conditions apply)
Taihape 06 388 1211 or Taumarunui 07 895 8110



Need advice on the area, activities or even the weather, call or stop in and see the team for firsthand knowledge.

Free phone: 0800 647 483.
Email: isites@visitruapehu.com.

Ohakune: 9am-4pm
54 Clyde Street.
OHK: 06 3858427

Taumarunui: 9am- 4pm
Railway Station, 116 Hakiaha Street.
TAU: 07 895 7494



Letters

Heavy rain watch in force for Ruapehu

Keeping an eye on the cycle ball

• Businesses in this district need to keep their eye on the ball erecting signs and maintaining mountain trails: our mills have already closed, our mountain is getting an average 12% less snow every winter, and our vegetable growers have only six weeks of unlimited and affordable diesel left until the Gulf oil situation returns to normal in 5-8 years' time.

So, the limited money that is available must be spent on generating the maximum possible new jobs.

Our fast-food, dining, entertainment, hiking, biking, LOTR and ecotourism businesses could all become big money-earners because a perfect storm of accelerated global warming, drastic reductions in overseas flights and deepening recession can send us many, many more holiday-makers from our hot and crowded coastal cities.

Spending \$50,000 to screen "Ohakune - Where Adventures Begin!" and "Ohakune Kōangi!" on social media there would be worthwhile spending, but Boffa Miskell's signs will be about as useful as their carpeting and security fencing was on today's frequently-deserted Christie Park skating ground.

Sir John Key instituted the national bike trails to promote tourism for our now rapidly approaching post-plentiful-petrol era, and we were given extra money to build wider tracks so that walkers could use them also. However, the track drainage was never completed, and edge trimming has been sporadic, from four metres wide to less than half a metre wide with bike tyre-trapping ruts down some hills of the track. Also, the trails have no discrete little signs informing hikers about each unique scientific, cultural and educational feature of our UNESCO park.

Lynley's crew are doing what they can, and I have pulled out dozens of ragwort plants, but younger volunteers need to get out there regularly, dig more drains and keep the bracken, grass and crown ferns cut back, as volunteers do on trails in other regions.

Here's a dozen more job-creating opportunities for our district. (<http://tinyurl.com/ruatours>)

John Archer

Ghost bus

• One of the best-kept secrets in local public transport is the Raetihi-Ohakune Shuttle. Many residents refer to it

as a "ghost service", and I can understand why, the date, time, and even the fact that it exists are poorly advertised. As a result, one of the most common questions I'm asked as a councillor is simply: "When does the shuttle run?"

For those who don't know, the service operates once a fortnight, on pension day, leaving at 10am from Dempsey's bus depot opposite the Ruapehu Health Centre on Seddon Street. It is a lifeline for people who rely on it for shopping, medical appointments, and staying connected with neighbouring communities.

As the newly appointed Ruapehu District Council representative on the Horizons Passenger Transport Committee, I have asked that this service be properly promoted so residents can actually use it. But this raises a bigger question for our district: is a once-fortnightly service really enough? Many communities of our size have weekly or even more frequent connections, and I have requested a full public transport needs assessment from Horizons to understand what level of service Ruapehu genuinely requires. The response so far has been lukewarm, but the need is real.

In the absence of that assessment, I would like to hear directly from the people who use — or would use — public transport in our district. If you can identify gaps, barriers, or services you believe should exist, please contact me on 021 137 5952 or email john.chapman@ruapehu.govt.nz. Local knowledge is often the most accurate data we have.

Recent global events have reminded us that relying solely on private vehicles is becoming less sustainable and less secure. Rural communities like ours deserve reliable, accessible alternatives, and that starts with being heard.

John Chapman, Ruapehu District Councillor

Wet words

• It would be interesting to get our local councillors walking the length of Seddon Street, Raetihi, in these heavy rain sessions we're getting a lot of. One puddle was 100-plus paces long, Saturday, (by the stockyards), the saturated verges becoming the least damp way to go, and even then, my boots failed to keep my feet dry.

I hold no hope for council to offer anything more than words, for which we pay dearly.

John Riding

Following the flooding and state of emergency for Ohura in the north of the Ruapehu District, a Heavy Rain Watch was in force for the south of the district from yesterday morning.

"We're looking at periods of decent rain rolling through, with the odd thunderstorm chucking a tantrum for Taihape, Whanganui, and Manawātū, including Ohakune, Rangataua, Horopito, Erua, Raetihi, Orautoha, Pipiriki, and Waiouru," reported RDC Tuesday morning.

Periods of heavy rain were forecast, with possible thunderstorms. Rainfall amounts may approach warning criteria, especially about the ranges. There was a moderate chance of upgrading to a Rain Warning.

"Expect streams and rivers to rise quickly, a few paddocks turning into ponds, and the odd roadside slip trying its luck. Driving conditions could get a bit sketchy, especially where water starts pooling or debris comes down.

"Give the gutters a quick clean-out, make sure drains are flowing, and shift anything valuable out of low-lying spots. If you're on the road, take it easy, slow down, increase following distances, and don't chance it through floodwater.

Roads closed as at Tuesday morning included Ohura Road, Mangaparo Road, Waitaanga Road, Huia Road, Okahukura Saddle Road, Kawautahi Road (closed at 6km mark), Koiro Road, Te Maire Valley Road.

Restricted/partial access: Kaitieke Road – accessible from both ends; closed at bridge (approx. 10km), Kururau Road – residents only no through access, Kirikau Valley Road – residents only, Upper Retaruke Road – open to one lane, Roto/Huia Road – open to one lane, Tokirima Road – open to one lane, Ruatiti Road – open to one lane.

Open (with caution): Oio Road – open; bridge assessment required, Aramahoe Road – open.

Cycle trails storm update

Trail conditions across the Mountains to Sea – Ngā Ara Tūhono have been impacted from the on-going heavy rain, with flooding, slips, scouring, mud, and some closures across several sections.

Some trails remain open with care, some sections have damage or hazards and the Mangapurua is currently closed pending inspection, reports Mountains to Sea.

"Our team and partners are assessing sites and prioritising repairs as quickly as possible," says trails manager Lynley

Twyman.

"With Anzac Weekend approaching, we know many people are planning adventures – so please check conditions before you travel and make wise decisions on the day."

For the latest updates and full trail-by-trail status, visit the Trail Status page: www.mountaintosea.nz/trail-status/

"Thank you to everyone helping respond, repair, and keep these pathways connected. Please message us if you see any new issues out on the network."

THE WEEKLY WORKOUT

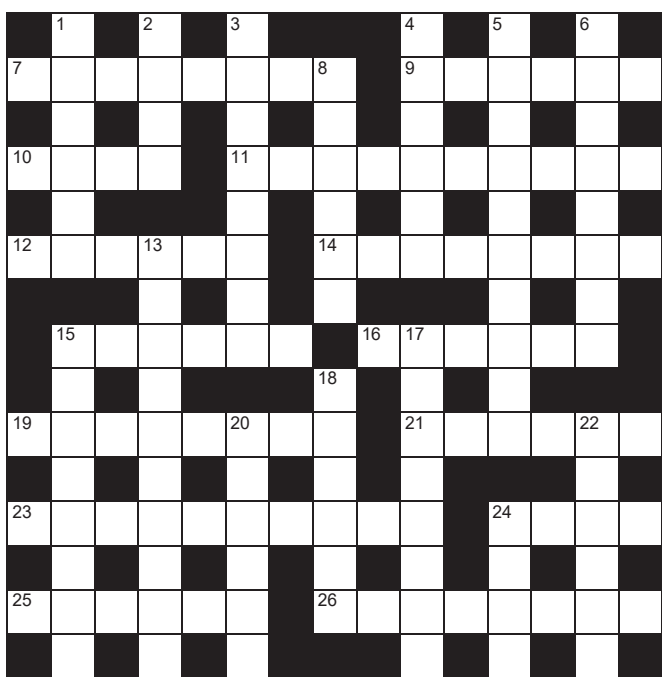
QUICK CROSSWORD

Across

- 7. Negligent (8)
- 9. Swarmed (6)
- 10. Indication (4)
- 11. Rotation (10)
- 12. Piled (6)
- 14. Rise and fall (8)
- 15. Afraid (6)
- 16. Destroyed (6)
- 19. Improper (8)
- 21. Stunk (6)
- 23. Haphazard (3-3-4)
- 24. Smack (4)
- 25. Changes (6)
- 26. Watchman (8)

Down

- 1. Relating to dogs (6)
- 2. University administrator (4)
- 3. Resent (8)
- 4. Impassive (6)
- 5. Plague (10)
- 6. Infatuated (8)
- 8. Relish (6)
- 13. Pacifist (10)
- 15. Judicious (8)
- 17. Rebellion (8)
- 18. Song words (6)
- 20. Unassuming (6)
- 22. Tooth covering (6)
- 24. Slender (4)



SUDOKU

Fill the grid so every row, column and every 3x3 box contains 1-9

	8	9		3	4			
2	5		7		1		8	
		6	5	8		4	2	
	3				5	6		2
1		7	6					3
	4	5		1	3	2		
	2		4		7		6	9
			8	2		3	5	

7	5		8					9
	8	2	3				1	5
				6				2
6		3					2	9
	4	9					5	3
	2			4				
1		6				5	8	4
8				2			9	7

The Top 10

1. What is New Zealand's highest waterfall?
2. Episodes of which classic 1960s TV series began "Five, four, three, two, one...?"
3. Anna Breman is Reserve Bank governor. What nationality is she?
4. Which part of New Zealand was once officially known as New Leinster?
5. What animal's name means "river horse"?
6. In a nursery rhyme, where would you go to see a fine lady with bells on her toes?
7. Which river flows through the Grand Canyon in the United States?
8. Is Opuntia a character in a play by Shakespeare, a river-crossing vessel in South Africa or a type of cactus?
9. New Zealander Ross Norman was the 1986 world champion in which sport?
10. Who painted the ceiling of the Sistine Chapel in Rome?

CROSSWORD

18. Lyrics, 20. Modest, 22. Enamel, 24. Slim.
13. Peacemaker, 15. Sensible, 17. Uprising, Stolid, 5. Pestilence, 6. Besotted, 8. Savour, Down: 1. Canine, 2. Dean, 3. Begudge, 4. 26. Sentinel.
Reeked, 23. Hit-and-miss, 24. Slap, 25. Alters, 15. Scared, 16. Ruined, 19. Unseemly, 21. Revolution, 12. Heaped, 14. Undulate, 11. Careless, 9. Teemed, 10. Sign.

SUDOKU

8	5	4	6	2	3	9	1	7
1	3	6	9	7	5	8	4	2
9	2	7	8	4	1	3	2	7
5	1	4	9	7	6	4	2	8
2	8	1	6	5	8	3	1	9
6	7	3	4	5	8	2	9	1
3	9	1	5	6	4	7	2	8
4	8	2	3	9	7	1	6	5
7	6	5	1	8	2	4	3	9



Puzzles © The Puzzle Company

THE TOP 10

- 9 Squash, 10 Michelangelo.
- Cross, 7 Colorado River, 8 Type of cactus, 4 Stewart Island, 5 Hippopotamus, 6 Banbury, 1 Southern Falls, 2 Thunderbirds, 3 Swedish,

Kirton calls on Ruapehu to remember and reflect this Anzac Day

Ruapehu's mayor Weston Kirton is calling on people to mark Anzac Day on Saturday 25 April by attending a local service and reflecting on the sacrifices made by New Zealand's service men and women.

Kirton said Anzac Day remains one of the most important dates on the national calendar, particularly given the increasingly unsettled global environment.

"In a world where tensions and conflict are again on the rise, Anzac Day is a powerful reminder of the role our armed forces play in defending the freedoms and values we often take for granted," he said.

"It's also a chance to recognise the commitment of all those who have served. It takes courage to step into that role, knowing the challenges involved – and it's a responsibility that is unlikely to get any easier in the years ahead."

Kirton said community support on Anzac Day sends a strong message of respect and appreciation.

"Attending a service is a simple but meaningful way we can acknowledge that service and stand alongside those who have worn the uniform, and those who continue to do so."

A range of Anzac Day services will be held across the Ruapehu District, offering options for everyone to take part.

"There are dawn services for those who value that tradition, but we know getting up early isn't for everyone," said Kirton.

"If attending a dawn service is a bit difficult, there are plenty of mid-morning options available, including the 10am service in Ohakune and at 11am in Waiouru."

Kirton encouraged everyone to make the effort to attend a service that works for them.

"Whether it's at dawn or later in the morning, I encourage everyone to come along, stand together, and take a moment to remember those who have served and sacrificed for our country."



A range of Anzac Day services are being held in townships across the Ruapehu District including the traditional dawn service and mid-morning services offering options for everyone to take part.

Rangataua fire, car fatalities

From Page 3

Volunteers from the Ohakune, Raetihi and Waimarino brigades attended the event.

The fire was extinguished by Fire and Emergency New Zealand (FENZ), and Police were notified at around 7.25pm.

A scene guard was put in place overnight, to allow for a scene examination to be conducted during daylight hours yesterday.

FENZ and Police investigators yesterday afternoon located the deceased person inside the house.

A scene guard was in place at the house as investigators continued work to determine the circumstances of the fire.

Work was also under way to formally identify the deceased person and establish the circumstances of their death.

"While we are in the very early stages of this investigation, our initial enquiries suggest there may be a connection between the fire and a fatal crash that occurred in Tangiwai on Thursday evening," said Inspector Neil Forlong, Whanganui Area

Commander.

One person died in the two-vehicle crash on State Highway 49, which emergency services were notified of at around 6.45pm. The vehicle crashed into an oncoming truck, between the Whangaehu River bridge and the Tangiwai Timber Mill main entrance.

While that person was yet to be formally named, the vehicle involved was understood to be connected to the address where the fire occurred.

"If anyone has information which they think may assist our enquiries, we encourage them to report it via 105, quoting file number 260417/7386," said Inspector Forlong.

Emergency services from Waiouru and Taihape were called to the two-vehicle crash on State Highway 49 at around 6.45pm.

"Sadly, despite best efforts, one person died at the scene," said Police.

The road was closed while the Serious Crash Unit conducted a scene examination.

ANZAC DAY
25 April 2026

Ka maumahara tonu tātou ki a rātou
We Will Remember Them

Join Us on Anzac Day, 11am Memorial Service
GIFT SHOP • CAFE • RESEARCH CENTRE • KIDS HQ

Open Daily 9.00am to 4.30pm
State Highway 1, Waiouru
www.armymuseum.co.nz

NATIONAL ARMY MUSEUM
TE MATA TOA

NGĀTI RANGI

Ka maumahara tonu tātou ki a rātou
We will remember them

No-guns war story on film

New Zealand documentarian Will Watson tells the story of how the 10-year Bougainville Civil War was ended by some guitar-toting Kiwis. The movie, *Soldiers Without Guns*, is to be screened on Anzac Day at the Royal Theatre in Raetihi (see advertisement, Classifieds).

As Liam Maguren details, this is an incredible story that needed to be told—now more than ever.

Soldiers Without Guns depicts the incredible story of the New Zealand soldiers who entered the 10-year Bougainville Civil War and paved a way to peace and unity, by sharing waiata, performing haka, understanding the culture, listening to women and leaving the firearms in the cabinet.

A fairly complex trail of events led up to the deadly war and the film's initial creative choices aren't that compelling on a storytelling level. A blunt voiceover, rough motion graphics, and overly dramatic music choices make the summary feel like a high school history lesson from 2005. Fortunately, the film's full of relevant archival footage, and when Watson wisely lets that material speak for itself, *Soldiers Without Guns* effectively places hand to heart.

The film finds strength in its interviews with those who experienced the conflict first-hand. The tragic tales are hard to take in, but the aroha displayed relieves such sorrow. Especially from Fiona Cassidy, former Major in the New Zealand Army, whose depiction of both the Kiwi and female perspective of events makes her the perfect focal point.

Then there are the higher-ups largely responsible for greenlighting the gunless operation. They share two anecdotes, both involving aerial travel, that heavily emphasise the fragile tightrope this plan was walking on. These scenes scream for a big-budget dramatised adaptation of the story, though it would need tinges of black comedy—there's a dry absurdity to our "she'll be right" attitude that cannot be ignored.

Equally unignorable are the simple morals at play here. It may sound cheesy to say that an open hand can end a war better than a closed fist, but stories like this breathe power into such conviction. It's the type of action we need now and the kind these soldiers bet their lives on.

This preview is taken from a review by Liam Maguren and supplied by Royal Theatre.



For everything Ohakune, visit

www.ohakune.info

RUAPEHU ANZAC SERVICES

SATURDAY 25th APRIL



TAUMARUNUI - WAYSIDE CROSS & GOLF ROAD

5.45am - March from RSA to Wayside Cross

6.00am - Dawn Service at Wayside Cross

The public are advised that two rounds of gunfire will be discharged in the vicinity of the Taumarunui Domain at approximately 6.15am.

9.00am - Golf Road New Cemetery

11.00am - Civic Service, War Memorial Hall, Taumarunui
Queries on the Taumarunui or Manunui services should be directed to Don Hall at the RSA on 07 895 7517 or email taumrsa@xtra.co.nz

MANUNUI

9.45am - Manunui Cemetery - Mahoe

Queries on Golf Road and Manunui Services should be directed to Don Hall at RSA 07 895 7517

WAIMIHA

11.00am - Waimiha Sports Club

You are invited to bring stories, songs, poems to contribute and flowers or wreath from the garden. Service followed by a shared lunch.

Queries on the Waimiha Service should be directed to Audrey Walker on 027 240 4450

MATIERE

11.00am - Town Hall

Service followed by a cup of tea and light refreshments at Cosmopolitan Club.

Queries on the Matiere Service should be directed to Ohura Cosmopolitan Club on 07 893 7838

OWHANGO

10.00am - Meet at Owhango Hall. Feel free to participate with a reading or poem and stay for morning tea cuppa afterwards. Queries email owhangorris@yahoo.co.nz

WAIMARINO (National Park)

5.50am - March from Service Station to Cenotaph

(war memorial cairn) at Waimarino

6.00am - Dawn Service at Cenotaph

Queries on Waimarino Service should be directed to Dutchy Visser 027 499 1191

OHAKUNE

10.00am - Memorial Gates

Following the service, RSA, previous and current service personnel and their families are welcome for light refreshments at the Ohakune Fire Station. Queries call Mark Taylor on 021 246 0849

RAETIHI

7.00am - Service at The Centre, Seddon Street then march to the two cemeteries.

The service will include the laying of wreaths at the two cemeteries and followed by a breakfast at the Raetihi Cosmopolitan Club. Queries call Mark Taylor on 021 246 0849.

WAIOURU

6.00am - Camp Dawn Service, Freyberg Street, Waiouru Military Camp

Those wishing to attend will require a recognised form of identification (drivers' licence, passport, etc) and will need to allow sufficient time for security checks on entry to the camp. Queries to Camp Warrant Officer 021 226 9097

11.00am - Civic Service, National Army Museum, State Highway 1, Waiouru

Directly outside of Museum in front of the flag station, please be in place by 10.45am

- All services take place rain or shine -



All ages involved in Anzac service at museum

This year's Anzac Day service out the front of the National Army Museum in Waiouru will feature a visiting international children's choir along with 100 new Army recruits in attendance during their basic training at Waiouru Military Camp.

The 11am service will be supported by the New Zealand Army, featuring a catafalque guard and a bugler from the New Zealand Army Band. Lieutenant Colonel Kevin Williams, Commanding Officer of The Army Depot, will deliver the keynote address, while Vietnam veteran Colonel (Retired) Ray Seymour will present a reading.

National Army Museum visitor experience and marketing manager Nicola Bennett says it's a public commemoration and she expects both local people and long weekend travellers to attend the commemoration: "our Mess Tent café will be open for the purchase of meals and coffee and this year we're particularly excited to host the children's choir who will come together at the Museum for the first time after extensive online rehearsals".

"I believe the young voices will add both colour and symbolism to the 2026 National Army Museum commemoration as new generations join those directly involved to remember those who served and made the ultimate sacrifice."

Nicola Bennett says the interest in Anzac Day is not diminishing. In February the Museum held another successful Purple Poppy Day to remember animals who gave service in conflicts and, approaching the Anzac Day date, there has been increased enquiry on the family research front.

"What we are finding is, more than 110 years after the very first Anzac commemorations, there is renewed interest from descendants of service men and women wanting to find out exact details of their loved ones' service history and this is most often of relatives they never met."

"Our Kippenberger Research Library is open to the public for research queries, or we can handle enquiries through our website."



The New Zealand Army will support the Anzac Day service at the National Army Museum on Saturday.

Honouring the courage, sacrifice, and service of our Anzac's. Lest we forget.

“
Burial parties, Turkish or British, don't move out as they would only be shot down. When you have seen a regiment of our boys in action, you would simply cry with pride, never were such brilliant charges made, and talk about gallantry. Every man was a hero.

4/485 Sapper John McGregor Craig (aka Jack), NZ Field Engineers, 13 October 1915 (Letter to mate Chas Menzies of the Auckland Telegraph Office)

Supporting our Current and Returned Services Personnel

“
Our bow grated on the shingly shore and now...jump boys...some fell right in the water while others, myself included only got wet up to our knees. We are on Turkish soil. Wounded and dead are thick on the beach...how did any of us land in such a position. With Turks concealed on the hills with machine guns waiting for us.

3/84 Roland Chadwick, New Zealand Medical Corps, 25 April 1915 (Diary entry)

“
From the front, right, and now from the rear, the rifle fire was coming. The last got several of us, though we did not know at the time, a sniper lay there just on the edge of the plateau and picked us off as we showed up, one by one. Cowdrey was the first to get it. He was talking to me one moment, the next his blood was pouring down his face from his forehead. He gave a surprised stare, then quietly laid his head on his rifle on the ground in front of him and was dead.

12/895 Herbert H Spencer Westmacott, Auckland Infantry Battalion, 25 April 1915 (Diary entry)

Mayor Weston & Annette

We will remember them

“
We sail at a late hour this afternoon. Tomorrow we will see the dawn of a great day for us because we must face strongly entrenched troops who fight with courage and determination.....but we are confident and come what may we will persevere in the end.

6/1276 Private William Thomas Dundon, Canterbury Infantry Battalion, 22 April 1915 (Letter to Mother)

Anzac Services Saturday 25 April

Raetihi – 7am, Raetihi Community Centre
Ohakune – 10am, Memorial Gates
Waiouru Civic Service – 11am, National Army Museum
Taihape – 6am dawn parade and service Service at the cenotaph with parade march to town hall.

Lest we forget

“
Of course the Turks could see us too, from the hill they were defending, and they poured shrapnel in as we advanced across the open. I was very lucky again here. I only got hit in the arm with a spent bullet, it was not bad enough for me to go back and get it dressed so you see it was not much. I was running alongside an officer and when he got to the trenches he said that if hell was any worse, he hoped he wouldn't go there.

8/918 Private Kenneth Cross Finlayson, Otago Infantry Battalion, 3 July 1915 (Letter to brother reference him at the Daisy Patch, 8 May 1915)

We will remember them

“
Poor old Vic Christopher was shot dead. They got him this morning. Vic's death is hard on anyone who knew him. He was one of the best chaps I ever knew and us fellows who were pals of his are really cut up. There are so many good fellows gone, though.

9/76 Trooper William Rupert Pyle, Otago Mounted Rifles, 31 May 1915 (Diary entry)

“
We were just changing guard when a shot came over the trench and killed a man standing beside me. The force of the shot deafened me and when I looked around, here was this poor chap lying against my legs shot through the head and dying. He died before we got him out. His name was Snow.

9/76 Trooper William Rupert Pyle, Otago Mounted Rifles, 6 June 1915 (Diary entry)

Strength in community - lest we forget

“
Still in trenches, another bayonet charge, up till now heavy losses, still with Australian trenches all night.

6/1404 Private Leslie Story, Canterbury Infantry Battalion, 28 April 1915 (Diary entry)

Alan, Jenna, Polly, Cam & Jody

We Stand Together

Strength as a community

“
Yesterday was a terrible day for our troops. The Australian and NZ Division were cut to pieces utterly, and demoralised. The remnants are now gathered on the beach and the slopes of the hills.

We hold the heights, but oh what a cost.

6/1276 Private William Thomas Dundon, Canterbury Infantry Battalion, 26 April 1915 (Letter to Mother & Father)

And at the going down of the sun, we will remember them

“
It was a smell that was with you all the time because you had dead bodies about all the time, it's a smell that you never lost. I can smell it still.

8/834 Private Henry Lewis, Otago Infantry Battalion, 24 May 1915 (Armistice Day, burying the dead - Oral History)

Quotes from archival material in the National Army Museum archives – with thanks to Nic Bennett at the Army Museum Waiouru.

Ruapehu's newest citizens welcomed at Raetihi



New Zealand's newest citizens at Mangamingi Marae in Raetihi following the swearing-in ceremony last week. From left, at back: Jack Walls, David Pearson, Rexy Athukoralage Don, Mayor Weston Kirton, Andre Marais, Danielle Marais, Sonja Marais, Valentina Mussio Blanco. At front, Jana Greig, Vivienne Pearson, Kayla Marais. Photo: RDC.

A special ceremony held last at Mangamingi Marae in Raetihi welcomed 11 people from seven different countries as new New Zealand citizens.

The new citizens, originally from Germany, Northern Ireland, Namibia, South Africa, Sri Lanka, Uruguay, and the United Kingdom, were joined by family and friends for the occasion.

Each took the formal step of either swearing allegiance to His Majesty King Charles III of New Zealand or making an official affirmation of citizenship before the mayor Weston Kirton, representing the New Zealand Government.

Kirton said holding citizenship ceremonies on local marae adds a distinctly Ruapehu flavour while acknowledging Te Tiriti o Waitangi – something deeply appreciated by those taking part.

“While the official ceremony follows a formal protocol, we make sure it is also warm, welcoming, and reflective of our local community. Holding it on a marae helps create that connection,” he said.

“Becoming a New Zealand citizen is a significant milestone. For many, it marks the end of a long journey toward making New Zealand their permanent home, and it is a privilege to share in that moment with them.”

Kirton said New Zealand's growing diversity is one of its greatest strengths.

“We are fortunate to live in an increasingly diverse nation. People who leave their home countries often have many options, and we are proud they have chosen Aotearoa New Zealand to build their future.

“This diversity strengthens our resilience and adds to the vibrancy and richness of our society. We are proud to welcome these new citizens into our Ruapehu community.”



Experts ~ at your service

Web Tech Design

Hi, my name is **KATHY**

I provide digital administration, **web design, & tech support** to small business if it's online, or could/should be if I'm a great person to talk to :) hello@howcanihelp.co.nz

www.howcanihelp.co.nz

Ph 0210 56 76 70

Carpet Cleaning

ChemDry
Drier. Cleaner. Healthier.

WANGANUI
CARPET & UPHOLSTERY CLEANING
24 HOUR FLOOD CALLOUT

We specialise in stains, odours and hard to clean carpets and fabrics.
P.U.R.T - Pet Urine Removal Treatment
cdwanganui@outlook.co.nz
www.chemdry.co.nz
Wanganui & Ruapehu Regions

0800 22 78 22

Building Supplies

PlaceMakers

FOR YOUR BUILDING PROJECT & DIY NEEDS

MON to FRI – 7.30am – 5pm
SAT 9am – midday

Ph 06-385 8414

Concrete Services

MCP

MCP TAUPŌ – MORE THAN CONCRETE
Taupō's No.1 Concrete Service

Locally owned and family-built, MCP Taupo delivers quality concrete solutions you can trust.
From house slabs and driveways to commercial floors and civil works – concrete done right.

✓ Free site check & quote ✓ Full prep, pour & finish
✓ 800+ projects completed
Strength in Every Pour – Built Right from the Ground Up

www.mcptaupo.co.nz
Email admin@mcptaupo.co.nz | 800 Rakaunui Rd, Taupo

Jasper 027 840 2222 | Norm 027 511 1166

Engineering

Ohakune ENGINEERING

- Manufacturing and repairs
- Access equipment hire
- Engineering supplies
- BOC gases
- 20T & 50T crane hire

29 Burns St, Ohakune.
027 444 2058 Bruce 021 0389288 Alan
Email: sales@ohakune-eng.co.nz

Ph 06 385 8952

Note:
Call Jude to book this space for next week.
Only costs **\$34.87^{+GST}** each week for 50 weeks, in colour!
Other options available.
p: 06-385-8532
e: ads@ruapehubulletin.co.nz

Septic Tank Work

Bennett's Septic Tank Cleaning Services

Septic tanks, water tanks, grease traps.

Call us for fast efficient service.

Phone Chris 06-388-0452

Ph 06 388 0452

Hire

Why buy it ... hire it!
TWEEDDALE HIRE

NEW LOCATION
Next to BP Ohakune
Open Monday – Friday 8am – 4pm
Saturday 9am – 12pm. Sunday CLOSED
P 027 2799 724 E ohakunehire@xtra.co.nz

CHECK OUT OUR EXTENSIVE RANGE OF HIRE EQUIPMENT. SEE OUR WEBSITE
WWW.TWEEDDALE.CO.NZ

PARTY HIRE: floodlights, tables & chairs, heaters, spit roasters, wheelie bins, chafing dishes, crockery & cutlery, dehumidifier, flute & wine glasses, universal food cooker, portaloos & showers, 3-section marquee, horse float.

Tree & Garden Services

Treeshape Ltd
Tree & Garden Management

Garden maintenance & landscaping
Tree care and removal
Landscape design and installation

Over two decades of experience in commercial and private tree & garden management

Fully qualified and insured

Contact us today for a free consultation or estimate – email treeshapeltd@gmail.com

Ph 021 951 962

Land development

VERSATILE BOBCATS LTD

Bobcat+Truck Hire
Section clearing
Driveways Formed

For All Your Land Development Requirements

Topsoil available

Contact Steve Gray Free Quotes

Ph 027 685 4854

Electrician

Are you looking for an electrician who:
- Turns up on time?
- Keeps his promises?
- Offers efficient service & sound advice?

Then call Jake Fah at

Mountain Electrical

REGISTERED ELECTRICIAN
Ohakune – Raetihi – Rangataua –
Horopito – National Park – Whanganui

Ph 021 770 123

Marquee Hire

FOR THE BIG JOBS:
digger hire, cherry pickers, pumps, wood splitters, generators, car trailers, post hole borers, furniture trailer, concrete equipment, rollers & compactors, portable trencher

Ph 06 387 5022

From trainee tools to leading the network

The energy sector is proving to be one of the most rewarding and future focused places to build a career — particularly for young people who want to earn well, stay local and make a real difference in their communities. That's the message from Jordan Hughes, southern area manager at The Lines Company (TLC), whose own journey shows what's possible with the right attitude and support.

Starting straight out of school as a trainee line mechanic, Hughes has progressed from the tools to leading TLC's southern network within a decade.

"I didn't know what I wanted to do when I was finishing school," says Jordan.

"I came into TLC with no prior study — just a good attitude and a willingness to learn. Everything else, you learn on the job."

His story reflects a broader truth about the energy sector: it is an interesting, vibrant industry that is actively seeking motivated people. With energy infrastructure underpinning every home, business and community, the work is varied, meaningful and essential.

"At first, the appeal was having a secure, local job and not needing to leave

home," Jordan says.

"Now, it's about the impact — what we do affects every part of the community. Everyone needs power."

TLC's strategic approach puts people first — from trainees through to leaders. Strong team culture, mentoring and trust are central to how the organisation develops its people.

"There are no silly questions here," says Jordan. "The culture is about letting people have a go, backing them and helping them grow. That's what makes the difference."

As a local employer, TLC plays a critical role in supporting regional communities — not only through reliable network management, but by creating pathways that allow young people to build long-term careers close to family and friends.

Applications are currently open for trainee line mechanic positions for the northern network area, based in and around Te Kūiti. Jordan's message to young people considering their future is simple: "... this could be you."

"If you're willing to learn, muck in and give opportunities a crack, this industry can take you a long way," Jordan says.



Jordan Hughes is living proof that a local career is possible from the ground up.



Experts ~ at your service

Tree Felling & Firewood

JK CONTRACTING
ON-SITE TREE FELLING & FIREWOOD SPECIALISTS

TURN UNWANTED TREES INTO VALUABLE FIREWOOD

- Tree felling
- Wind-thrown & hung-up trees
- Section clearing
- 6T tip truck services
- Dangerous & dead trees
- Hedge & shelterbelt work
- 6T & 1.7T diggers
- On-site firewood processing

Professional - Reliable - Local Service
Free quotes - Fully insured
Covering the wider Ruapehu district

Phone Jack 027 314 7095

Ohakune Landscape Supplies

- Huge range of Pebbles
- Mulch
- Bark
- Pea Straw
- Builders mix
- Sand
- Topsoil
- Bagged Garden Fertilisers
- Rail & Mac Sleepers
- White chip
- Pavers

~ Call to arrange supply ~ FREE loan trailer ~
~ eftpos available ~
Email: Ohakune.landscape@gmail.com

Ph 0800 926 315

Property Maintenance / Cleaning

RUAPEHU COMMERCIAL CLEANING & PROPERTY MAINTENANCE LTD
Commercial | Residential Property Cleaning | Maintenance

- General Cleaning
- Property Maintenance
- Carpet Cleaning
- Water Blasting Services
- Floor polishing/buffing

For a free no obligation quote call:
RAY 021 886 509 or MAURICE 021 078 2419
Or visit: www.rccpml.co.nz

021 886509 or 021 0782419

Curtains & Blinds

CURLS
curtains & blinds

FREE MEASURE & QUOTE

Custom Quality Curtains, Blinds, Shutters & Steel Kit Set Frames

curlscnb@gmail.com

Find us on facebook
[@curlscurtainsandblinds](https://www.facebook.com/curlscurtainsandblinds)

Ph 022 307 2627

Plumber

Plumber Dan
Plumbing, Drainage, Gas & Building

Looking for a dependable local plumber in your area?
Count on our skilful local Ohakune plumber for all your maintenance plumbing requirements. Whether it's a leaking pipe or a blocked drain, we deliver quality service with fair pricing in the Ohakune & surrounding areas.

Don't hesitate, get in touch with us today!
office@plumberdan.co.nz

Ph 021 635 517

For everything Ohakune, visit

www.ohakune.info

Earthworks

HAITANA EARTHWORKS

- 14 tonne digger
- 14 tonne wheel digger
- Tip truck
- Supply of metal, scoria and boulders

Farm work, section & driveways, rock walls

Ph 027 289 4404

Gas Fitting

Plumbing & Gasfitting

Cut down on your power bill. Go gas hot water & heating — supplied and installed. Call for a consultation.

Phone Denise 027 482 7488 or
Email accounts@aplumbingandgas.co.nz

Ph 06 343 6866

Auto Services

AUTO SERVICE CENTRE

Repco
BRIDGESTONE

Authorised Holden Service Centre
Full workshop services for all vehicles, wheel alignments, computer diagnostics, warrant of fitness inspections, parts, batteries, engine oils.

84 Clyde Street, Ohakune
After hours 027 448 4080
autoservicecentre@hotmail.co.nz

Ph 06 385 9222

Plumbing / Drainlaying

B&M PLUMBING LTD

- Plumbing & Drainlaying
- Pumps - sales, servicing & installation of all pumps
- Fires & Solar
- 5 Ton Digger with Augers, Ditchwitch & Tip Truck

"Your local Registered Certifier"

B&M PLUMBING LIMITED
Call Brian 027 436 1075
Email: bmfred@xtra.co.nz

Ph 06 385 4718

Auto Services

RUAPEHU MOTORS

Locally owned and operated by mechanic Daniel Norris.
WOF \$75 car, \$45 trailer

Ruapehu Motors
Cnr Seddon St and Valley Rd, Raetihi.

For enquiries, please phone Daniel

Ph 027 863 7454

Upholsterers

Westlorne

- Furniture Upholstery
- Vehicle Upholstery
- Tarpaulins • Canvas & Leather
- Shade sails • Saddlery

Factory, SH49, Tangiwai, Ohakune.
Mobile 0274-467-289 Fax 06-385-8483
email: westlorne@xtra.co.nz
www.westlorne.co.nz

Ph 06 385 8487

ACCOMMODATION AVAILABLE

RURAL 3-BEDROOM HOUSE, 1 bathroom & small ensuite. 4km from Raetihi. Well appointed, double glazed, insulated, solar hot water plus wet back, well laid out grounds. Looking for a very careful, permanent tenant. Max 6 people. No dogs. Advance rent and bond will be required. Call 027 444 3441.

FOR SALE

FIREWOOD LOGS 4 SALE. Pine logs and mixed logs, 5 ton or 2.5 ton truck loads. Call/TXT Keith 021 055 4794

WATER TROUGHs, cattle or sheep. Different sizes. Delivered price quoted. Ph 0800-487-633.



Ruapehu Mayor Weston Kirton

To arrange a meeting or call back please phone Council on 06 385 8364 or email: kay.kidd@ruapehudc.govt.nz



BUSINESS NOTICES

Ohakune Health Hub In pain? Let us help.

Experienced care in Osteopathy, Physiotherapy, Massage and Acupuncture – effective treatment for:
- Musculoskeletal pain - headaches & concussion - post-operative recovery - and much more.

ACC registered | 77-79 Clyde St, Ohakune
Book online: www.ohakuneosteo.co.nz



Premium Ruapehu Lowline Angus x Jersey branded beef, raised locally in Raetihi.

Once You Taste It, You'll Understand

Tender, marbled, full of flavour – calm handling and stress-free transport for the best taste.
FREE LOCAL DELIVERY

Renē: 021 24 24 211 www.ruapehulowlineangus.co.nz

PUBLIC NOTICES

Ohakune Badminton

Monday nights 7.30 – 9pm
Ruapehu College hall – \$5pp

Contact 027 226 6793

The Royal Theatre, Raetihi
Community Entertainment

Soldiers Without Guns (M)

Saturday 25 April – 7pm – \$15

Supper included. Bar available.

Waimarino Health Shuttle

Need to get to a health appointment in Whanganui or Palmerston North?



Book on 0800 266 547

Bookings must be made 24 hours in advance.
Contact us between Monday to Friday 8.30am and 3.00pm

Tongariro Taupō Conservation Board Notice of Meeting

Date: 30 April 2026

Venue: RDC, Council Chambers, 37 Ayr Street, Ohakune 4625

Public Forum: 1.00pm to 1.30pm

Members of the public are welcome to attend the meeting and engage with the Board during the public forum.

If you wish to attend the meeting or address the Board, either in person or online via MS Teams, please contact Louisa Meredith to receive an agenda and online link on

E. tongarirotaupoconservationboard2@doc.govt.nz

Ph. 027 256 1835

<https://www.doc.govt.nz/about-us/statutory-and-advisory-bodies/conservation-boards/tongariro-taupo>

SITUATIONS VACANT



Hey kids – need extra pocket money?

The Ruapehu Bulletin requires Wednesday morning relievers.

Phone Robert or Jude on 06-385-8532.

Ohakune squash

Last week's Ohakune Squash Club inter-business results had Tecnifibre have their first loss, beaten by Salming 97/94, Unsquashable, on the other hand, had their first win beating Head 106/72, Dunlop beat Prince 96/77 and Stellar beat Karakal 97/84.

Points to date: Tecnifibre 415, Karakal 395, Salming 395, Dunlop 392, Stellar 387, Unsquashable 385, Head 379 and Prince 315.

Draw for this Thursday: at Ohakune 5:00pm Karakal vs Prince, 6:30pm Unsquashable vs Stellar, 8:00pm Dunlop vs Tecnifibre and at Raetihi at 5:30pm Salming vs Head.

Entries have been coming in for Central Juniors Age Champs and the Central Masters Age Champs, both of which are being hosted by Ohakune on the weekend of 22-23 May. Ohakune has hosted the Central Junior Age Champs several times, but this will be their first time hosting the Central Masters. It is also hoped that holding both on the same weekend might help with numbers. Masters starts at age 35 in squash.

PUBLIC NOTICES

Ruapehu District Council Te Kaunihera-ā-Rohe o Ruapehu Boards and Committees UPCOMING MEETING DATES



Agendas are published on our Public Portal two working days before each scheduled meeting. To speak at our Public Forum and share your thoughts directly with Elected Members, please contact our Governance team at governance@ruapehudc.govt.nz.

Ōwhango-National Park Community Board

6PM, Tuesday 5 May 2026
Ōwhango Domain Pavilion, Ōwhango

Ruapehu District Council - Hearings

10AM, Tuesday 12 May 2026
War Memorial Hall, 149 Hakiha Street, Taumarunui

Ruapehu District Council - Hearings

10AM, Wednesday 13 May 2026
Council Chambers, Ayr Street, Ohakune

Extraordinary Risk & Assurance Committee

11AM, Monday 18 May 2026
War Memorial Hall, 149 Hakiha Street, Taumarunui

Ruapehu District Council

10AM, Wednesday 27 May 2026
War Memorial Hall, 149 Hakiha Street, Taumarunui

MEETING CONTACTS

Ruapehu District Council	07 895 8188
Taumarunui-Ōhura Community Board	
Molly Jeffries, Chairperson	021 431 833
Ōwhango-National Park Community Board	
Peter Zimmer, Chairperson	027 479 1926
Waimarino-Waiouru Community Board	
John (Luigi) Hotter, Chairperson	027 274 2616
Risk & Assurance Committee	
Philip Jones, Chairperson	027 499 9408

MEETINGS

The following meetings of Horizons Regional Council (Livestreamed) will be held during **May 2026** in the Tararua Room, Regional House, 11-15 Victoria Avenue, Palmerston North, unless otherwise advised:

Wednesday, 13 May
9.30am Integrated Catchment Committee

Tuesday, 26 May
9.30am Regional Council

Wednesday, 27 May
9.30am Audit, Risk & Investment Committee

Should Members of the public wish to speak at Meetings, they are advised to phone 0508 800 800.

M J McCartney
CHIEF EXECUTIVE



horizons.govt.nz



For everything Ohakune, visit www.ohakune.info

Contact purchases remaining 25% of King Country Energy

Contact has taken full ownership of King Country Energy Limited, including its five North Island hydropower stations.

Since 2017, the stations have been operated and maintained by Manawa Energy Limited, a wholly owned subsidiary of Contact. Contact, through its wholly-owned subsidiary King Country Energy Holdings Limited ("KCE Holdings"), previously held 75% of the shares in King Country Energy.

Contact and KCE Holdings have purchased the remaining 24.98% of King Country Energy's shares from the trustees of the King Country Trust.

The Trust last month undertook public consultation on Contact's offer to purchase the remaining 25% of King Country Energy. The Trust's decision to proceed was informed by an independent assessment of the Trust's ownership options by Northington Partners, alongside feedback received during the consultation process.

The transaction was funded via the issue of new shares in Contact to the Trust.

Contact hydro development manager and King Country Energy director Todd Mead, says Contact remains committed to the local community.

"We're committed to remaining active in the local community, strengthening relationships and partnerships with local iwi, and continuing to invest in the hydropower stations, ensuring they operate reliably and safely into the future," says Mead.

Mead also acknowledged the contribution of the Trust to the King Country Energy Board since King Country Energy was formed in the 1990s.

"King Country Energy has had a long relationship with the King Country Trust. The Trust has been a strong advocate for King Country Energy generation, and their presence on the Board has brought extensive knowledge and a local perspective that we have greatly appreciated over the years," said Mead.

Community and Emergency Services

Alzheimers Whanganui Inc – Email admin@alzheimerswhanganui.org.nz or for support phone 06-345 8833

Budget Advice – Email waimarinobudgetservices@gmail.com or phone 027 259 5285.

CCS Disability Action (Whanganui) – Sheryl Brightwell 0800-789-654

Child, Adolescent and Sexual Health Nurse – 06-385-5019

Child Youth and Family Service – 0508-326 459

Churches

Anglican, 06-385-4957. **Baptist**, 027-206-1874. **Catholic**, 06-385-8858 or 027 606 5186. **Gospel Chapel**, 06-385-8453. **Presbyterian**, 06-388-0675 or 06-385-8708. **Waiouru** – duty chaplain 06-387-5599 ext 7031 or 021-493-692

Civil Defence – Simon Osborne, Emergency Management Officer (EMO), RDC – 07 895 8188, or 027 220 0569. Simon.Osborne@ruapehudc.govt.nz

CLAW community free legal advice – Whanganui 06-348-8288, 0800 00 36 36

Doctors: In an emergency call 111

Ruapehu Health Ltd 06-385-4211

Information Centres – Ohakune 06-385-8427, Raetihi 06-385-4805

Mountains to Sea – Ngā Ara Tūhono – Lynley Twyman, Trail Manager, +64 21 403036

Ngati Rangī Community Health Centre – 06-385-9580

Plunket Society – Plunket Nurse 06-385-5019

Police and Search & Rescue Emergency, call 111

Ohakune 06-385-0100, Raetihi 06-385-4002, Waiouru 06-387-6884, Military Police 0800-50-11-22

Red Cross – 0800 RED CROSS (0800 733 27677)

Rotary Club Raetihi - Ohakune – 027-344-5669

Ruapehu REAP – 0800 00 REAP (0800 007 327)

Ruapehu Maori Wardens – Email: ruapehumaoriwardens@gmail.com

St John – In an emergency call 111

Taumarunui Counselling Services

For confidential counselling in Waimarino phone 07-895-6393

Victim Support Contact Centre – 0800 842 846

Waimarino Cancer Society – Co-ordinator 06 348 7402

Waimarino Health Care Centre – Raetihi 06-385-5019

Waimarino Community Toy Library – waimarintoylibrary@gmail.com

Women's Refuge – 0800-REFUGE 0800 73384

Ruapehu Mayor – Weston Kirton, enquiries to 06-385-8364 or 07-895-8188.

Ōwhango-National Park Community Board:

Peter Zimmer - Chairperson 027 479 1926; Gail Gray - Deputy Chair 027 434 6599; Anthony Gurr 021 487 742; Eddie Marsters 021 108 0279; Murray Wilson 027 542 9079; Luke Pepper - (RDC Rep) 027 329 2849

Taumarunui/Ohura Ward Community Board:

Molly Jeffries - Chairperson 021 431 833; Sophie Stockbridge - Deputy Chairperson 020 401 1190; Johnny Dryden 027 573 4726; Brian Portland 027 558 5585; Oriwia Wanakore 020 498 4088; Robyn Gram (RDC Rep) 027 389 1912

Waimarino-Waiouru Community Board:

John (Luigi) Hotter - Chairperson 027 274 2616; Stu Robinson - Deputy Chairperson 021 024 07657; Kay Henare 027 924 7252; Colin Pakai 021 091 67315; Emma Young 027 347 1457; David (Rabbit) Nottage - (RDC Rep) 021 111 6514

Guidelines is published free of charge. Please help us to keep it up to date – call us if your details change, or if you see something that needs changing: 06-385-8532

HURLSTONE

Earthmoving Limited

PLANT HIRE OR
CONTRACT

Specialists in Land
Development, Drainage,
Roothing Construction &
Ready Mixed Concrete.

Phone 58-083 Ohakune

WAIMARINO

BULLETIN

VOICE OF THE RUAPEHU REGION
Tuesday 22 April, 1986. Volume 3 No. 45

PERSONAL LOANS

now available from:

 trusteebank
Wanganui

Order of St John awarded to local stalwart

After 49 years service in the local division of St. John Ambulance, George Murdie of Ohakune has been awarded the Order of St John.

Mr Murdie will be presented with the Order by the Governor-General, Sir Paul Reeves, at Ngaruawahia in late June.

As superintendent of the Ohakune Railway Ambulance Division, Mr Murdie speaks on first aid to many organisations, including school groups, scouts, Plunket members and forestry staff.

He said he had taken literally hundreds of first aid courses, so many he can't remember the exact number and he still goes to courses himself to learn new things.

One of his main wishes is that first aid should be taught in schools.

"It's the person who is on the spot first at an accident who needs to know first aid," he said.

Mr Murdie himself has attended many accidents and helped victims survive.

One of the most difficult incidents he has attended was a suicide attempt using poison.

"It's one of the hardest I've ever done because you can't see what is wrong with the person and you are struggling to keep their life

and they're wanting to die," he said.

Motor accidents involving drunken drivers are also difficult.

Sometimes however he is called out to just talk to the sick and lonely.

Not all the activities of a St. John ambulance officer are so saddening. He has had many a laugh, sometimes being taken as a policeman or a traffic officer, and also playing jokes on people with the life-like manikin which is used for resuscitation training.

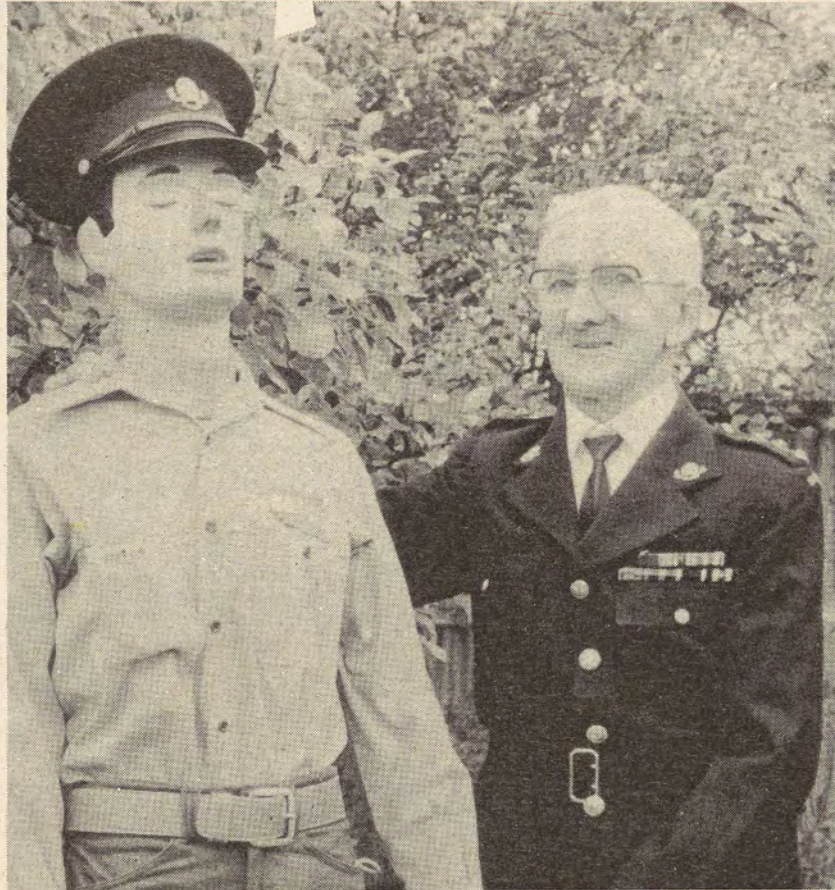
Mr Murdie has already been given an award when he became a brother of the division for his dedication after 25 years service.

He was presented with that award by the Governor-General of the time.

There are now five active members of the Ohakune Railway Ambulance Division, none of whom work for the railways. When the division started 49 years ago, there were only two members who did not work for the railways, one of them Mr Murdie.

For 25 years he worked for Farmers Distributing Company, now Dalgety Crown.

The members of the division have quietly helped people in the area for 50 years, without much recognition and publicity. We should be proud of them.



George Murdie, awarded the Order of St John, shows off a friend, the manikin used to practise resuscitation.

How far to Raetihi? Left at Waiouru, you can't miss it

When you are lost ask a policeman, or woman, they say, but a Wellington policewoman called Leonie got a shock this week when her sense of direction let her down.

The unfortunate constable,

who was staying in Rangataua Road with friends, is in training for the Fletcher marathon to be held in the first week of May.

She planned to do a 30km training run last week and

asked her hosts to suggest a good circuit.

The night before, they drove her round the triangle from Reynolds corner in Ohakune out to Raetihi and back via Tohunga Road.

"Yes I've got it," she said confidently. And the next day, at 9.30am she set off.

She ran and ran, and ran some more, all the time expecting to reach Raetihi. But no luck.

Finally while ploughing up a biggish hill she stopped a cyclist to ask: "How far is it to Raetihi?"

The cyclist gave her a dubious look. "Raetihi? You're nearly at Waiouru!"

When she picked herself up from the road she ran on to Waiouru, rang her surprised hosts and said: "Please collect me from Waiouru..."

Which all goes to show that a Wellington policewoman in the Waimarino may not be the best person from whom to get directions!

Fireman theft leaves a sour taste

While Ohakune Volunteer fire brigade members were practising recently, vehicles parked at the rear of the station were entered and goods were stolen.

Ben Goddard lost a camera containing a valuable film of a family wedding, of his children and other important photographs.

He appealed to the person responsible to return this irreplaceable film and said he was keener to get the film back than the camera.

Mr Goddard said the cars were parked under floodlight and that chief fire officer, Max Martin was in the station at the time doing book work.

"It's coming to the stage when we'll have to lock vehicles even when we go to fires in the middle of the night," said Mr Goddard.

It is certainly upsetting that people doing essential community work which benefits us all are subject to such behaviour.

It's chimney- cleaning time

Recent chilly days and nights turn our thoughts towards the coming cold of winter, and to ways of keeping warm.

People are gathering and stacking wood, and smoke is appearing from chimneys.

However, according to Max Martin, of the Ohakune Volunteer Fire Brigade, there is always the danger of chimney fires when chimneys are dirty.

"We usually get quite a run of chimney fires at the beginning of winter when it all of a sudden gets cold and people light their fires," he said.

He said that chimney cleaning is particularly important for enclosed, slow-combustion fires, which anyway should be cleaned frequently. Carbon from the fires dries out and soon ignites.

So, come on Waimarino residents. Get up on the roof before it gets too cold and clean those chimneys!

Taihape phones now STD

Taihape telephone numbers, formerly obtained through the toll operator, are now available by direct dialing.

From last week calls to Taihape can be made using the STD code 0658. However Taihape numbers have changed, many, but not all, simply with the added prefix 80. Other numbers have completely changed.

Mr Gordon, chief post-

master at Wanganui, said that the new Wanganui directory, which includes Taihape numbers, will be out in July. In the meantime subscribers will have to ring directory service for information on Taihape numbers.

He said however that business people who rang Taihape frequently, could obtain a supplementary Taihape directory by applying to the postmaster at Ohakune post office.

Playcentre week fun and learning



Casey Newland, 3 (left), and Melissa Scurton, 2½ having fun painting at Waiouru Playcentre's open day at the Waiouru Community Centre last week.

Waiouru and Raetihi playcentres took advantage of last week's Playcentre Week to promote their centres.

Raetihi Playcentre held an open day, while some of the parents sold playcentre toys and games at a stall in the main street of Raetihi.

Waiouru Playcentre moved all their equipment and children into the community centre so that all could see what went on at playcentre.

Play-dough, paints and raffles were sold while the children were busy painting, riding trollies or making shapes from play-dough.

The day was advertised in community centre shops by shapes and drawings made by playcentre children.

Waiouru Playcentre is holding a baby contest soon to raise funds. Those who had their babies photographed last week by Richard Church will have to view the photos at playcentre this Thursday, if they are to be entered in the contest.

NEWS
58-681

Your Community Newspaper

ADS
58-532

The news, 40 years ago. The other pages and other Bulletins can be found at the Papers Past website, paperspast.natlib.govt.nz



John Eley, winner of the 21km run in a time of 1:43:04.



Glen Kirk, winner of the 52km bike ride, in 1:41:08.



Jeremy Barr and his dad Harry head for the finish line in the 5km run.



Aleksandr Averin, Leigha Averin and Indi Taylor didn't let a bit of mud and rain get in the way of making the 5km a fun run. Photos: Robert Milne and Glyn Hubbard.

Gutbuster spirits

From Page 1

as well as being part of a great event," said Karl.

Raetihi Gutbuster co-ordinator Cathy Rogers was delighted with the turnout despite the wet conditions, but the smiles on faces of participants and marshals brought a ray of sun to everyone and showed the strength of community.

"The rain did affect the number who attended and added a challenge to everything but it was so encouraging to see people enjoying the Gutbuster, and not minding the weather," she said.

Mud run

The 5km route was changed this year to include Jackson Street, which was part of the old Stock Route in the days when sheep and cattle were taken to the sales by drovers. It has a clay surface in places so the rain made this an interesting section for the walkers and runners.

"It was quite muddy but most competitors weren't bothered and one said the mud part was fun because it wasn't so boring! Others loved the opportunity to get dirty," said Cathy.

"We had several marshals along Jackson Street who provided plenty of help to competitors, especially those who had babies in push chairs and needed a lift through the muddy section.

"These girls were very much appreciated by participants," she said.

The community support and contributions cannot be measured just in monetary terms as many people contributed hours of time and effort to ensure that the event was successful and enjoyable.

As well as the businesses who support the event, Orautoha School were there again with hangi and also provided many people as marshals; a Duke of Edinburgh student from Ruapehu College, Ohakune Primary School's William Pike Challenge students and parents, Ratana Temepara committee members as well as a number of people from the community also came to marshal. Raetihi Primary School provided seats and tables.

"Absolutely amazing, is how I describe the help from so many people in the wet conditions. My appreciation for everyone is enormous," said Cathy.

Helpers arrived from 7am, setting up gazebos, road signage, stalls as well as taking registrations at the Raetihi Information Centre. About 30 more people volunteered

as marshals.

Cathy thanked Shane Billington, Scott Tyler and Greg Windle for driving the pilot vehicles for the bike events with Lynley Twyman the tail-end-Charlie on the 88km and Rabbit Nottage who tailed the events on the Pipiriki Road.

"The committee of Tania Windle, Aroha Williams, Mere Haitana, Evelyn and Scott Tyler, Helen Cussins and Adele Couper worked tirelessly, along with Lynley Twyman and Jayde Lowe who ensured all the operational aspects of the event were in place.

"A huge thank you to the Waimarino Museum Trust for enabling us to base the event on Museum lawn and use its large shed which was essential, given the weather."

The I-Traffic team took care of traffic management; Racetime provided the timing system and the Medic Company were ready to tend to any injuries – but thankfully their services were not needed on Saturday. MC Stu Robinson started the events, kept everyone informed and provided the beats during the day. Photographers Glyn Hubbard, Chantel O'Brien and Martyn Davies braved the elements to capture the event.

The Motts, Young, Greenwood and Deadman families again provided vegetables for the registration packs.

"These vegetables continue to be a great favourite and one participant joked that the vegetables are the reason they come to Gutbuster."

Heavy rain drove the prize giving into the Waimarino Museum shed and Ruapehu's mayor Weston Kirton was on hand to congratulate the winners and present them with their prizes, all of which had been sponsored or supplied by businesses from National Park, Ohakune and Raetihi.

First place winners: 88km cycle Johnny Newman (male); Christine Cook (female); E-bike Ashley York (male); Jocelyn Wall (female). 52km cycle Glenn Kirk (male); Lisa Chittick (female); E-bike Pete Petersen (male); Debbie Cain (female). 20km cycle Ritch O'Dwyer (male); Libby Thomas (female); E-bike Noel Eley (male); Danielle Robinson (female). Half marathon run John Eley (male); Lisa Wells (female). 5km run/walk youth James McKavanagh (boy); Emmie Williams (girl); adult Matt Nesbit (male); Kayleigh Williams (female). Best dressed team, Plateau Lodge.

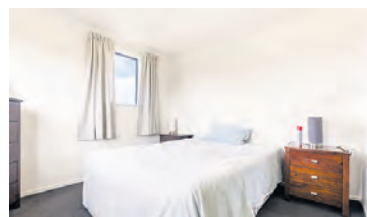


The old stock route provided a slip n slide section for the 5km runners and walkers, which saw participants dropping their competitiveness to help each other – including those with baby buggies – up the slippery slope. Photo: Raetihi Gutbuster.

Property Brokers

National Park 19 Mackenzie Street

Auction



Must Be Sold - Easy Living, Motivated Vendor

Price guide \$310,000. Set in the beautiful National Park, this low-maintenance two-bedroom home offers an exceptional opportunity and clear instructions that the owner wants this SOLD. Designed for easy living, the home features a light-filled open-plan kitchen, dining, and lounge that flows effortlessly to a spacious deck perfect for entertaining or unwinding while taking in the scenery. Double glazing throughout ensures comfort in every season. A generous walk-in wardrobe in one of the bedrooms adds extra appeal, while the overall layout is both practical and inviting ideal for permanent living, a lock-and-leave, or a weekend retreat.

2 1

Auction 1.00pm, Fri 8th May, 2026, (unless sold prior), Property Brokers, 27 Hakiaha Street, Taumarunui

View Sat 25 Apr 1.00 - 2.00pm
Sun 26 Apr 1.00 - 2.00pm

Web pb.co.nz/TUU219588

June Nevin
M 021 974 772

Cameron Elliot
M 027 542 1009