



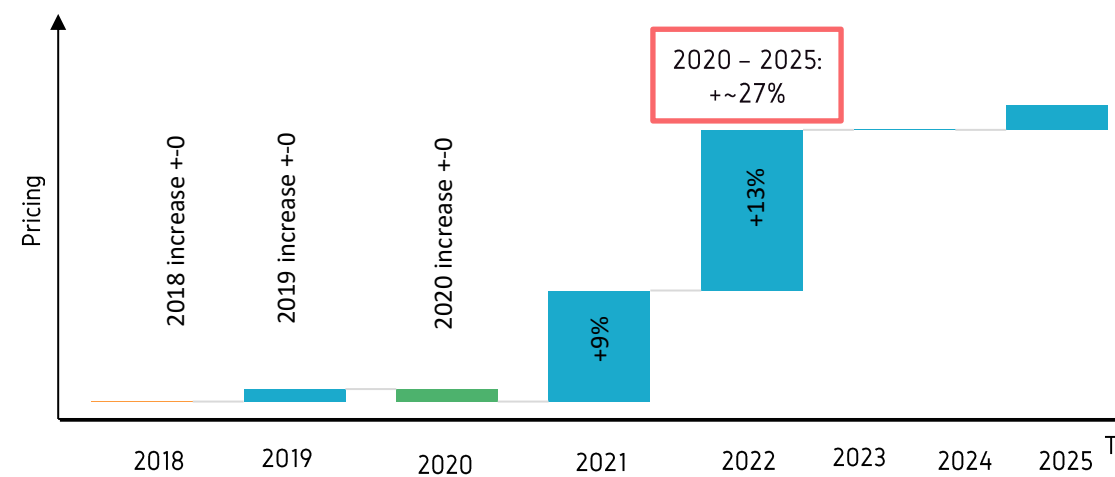
Smart Equipment Passport (SEP)

Analytics + AI for Engineering Management

The process industry needs Advanced Analytics & Artificial Intelligence to manage changing environments and increase efficiency

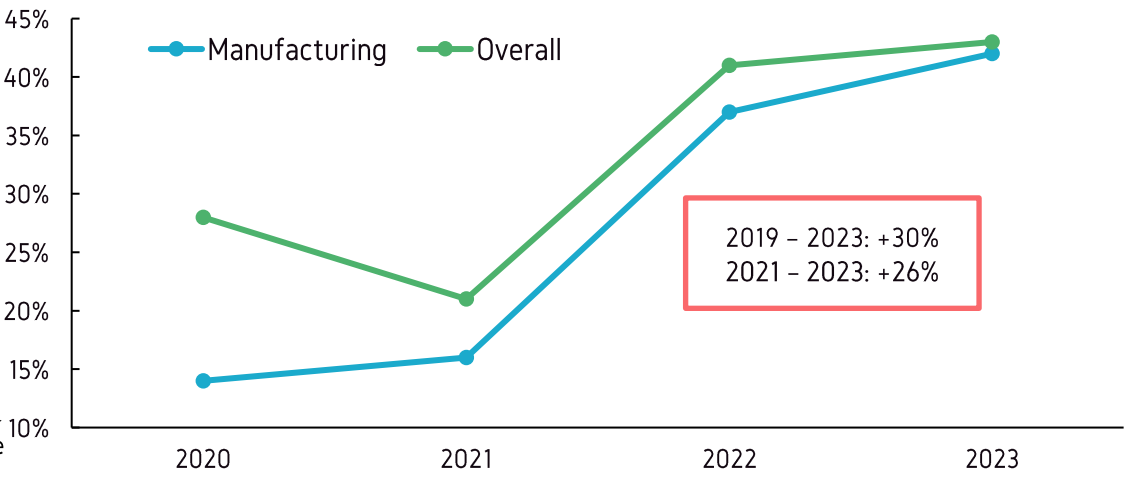
Production is becoming more expensive in Europe

*Germany Manufacturing Producer Price Index (Eurostat) (I:GMPPI) (ref)



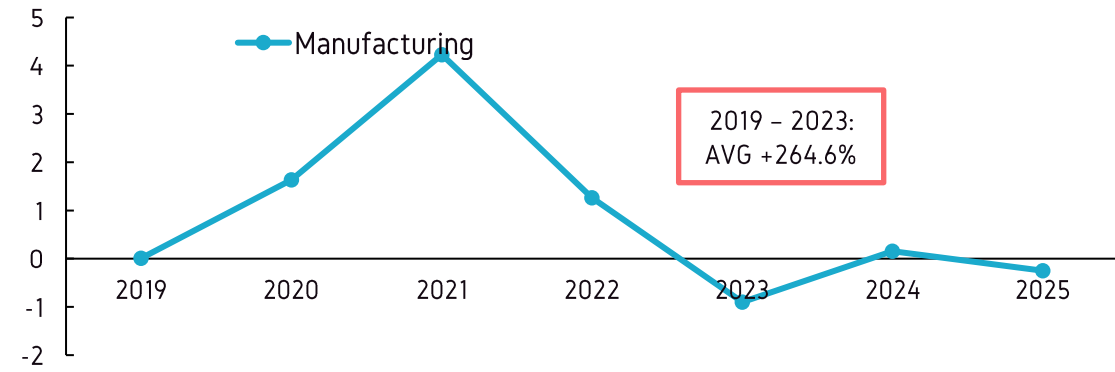
Constant growth in shortage of skilled employees in Germany

*Based on the Business Survey of the ifo institute, January 2023 (ref)



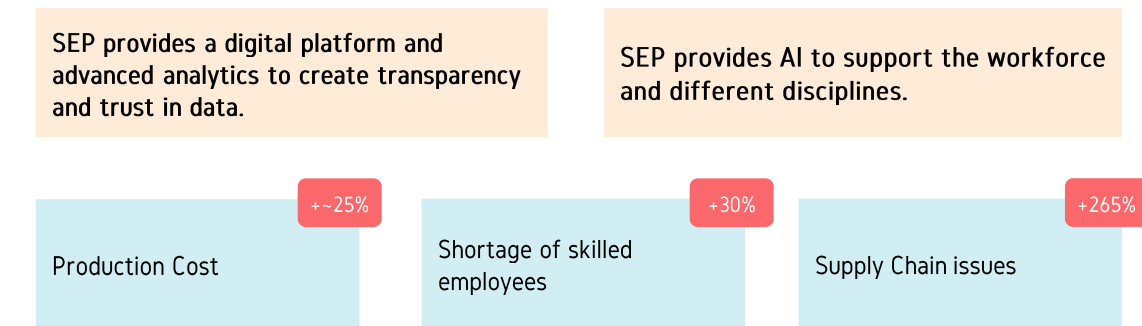
Industry is struggling with high pressure inside the supply chain

*Global Supply Chain Pressure Index (FED) (ref)



The overall demand to reduce cost and digitalize is becoming more relevant

SEP provides key technologies to manage the demand and support the workforce

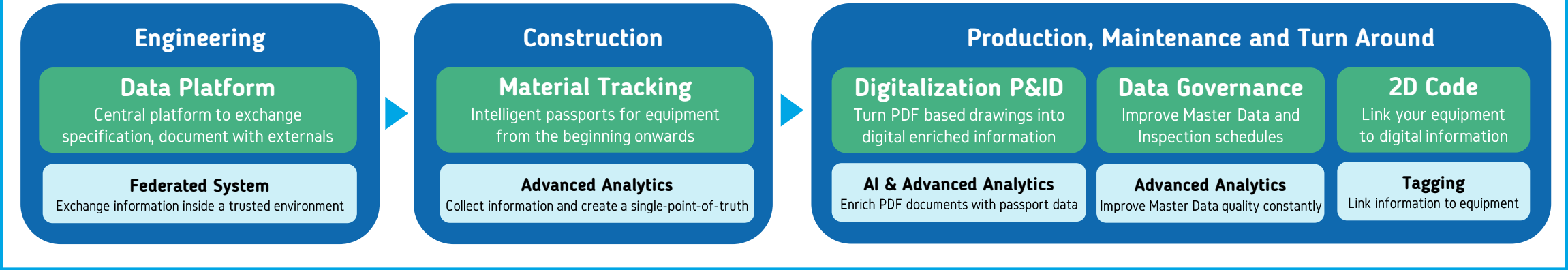


SEP is the Data Analytics and AI extension for the EAM tool landscape, integrated to the BTP and SAC or On-premises

Challenge

- Information Quality Assessments & Risk Management
- Automation for Project to Asset hand-over
- Access to engineering information

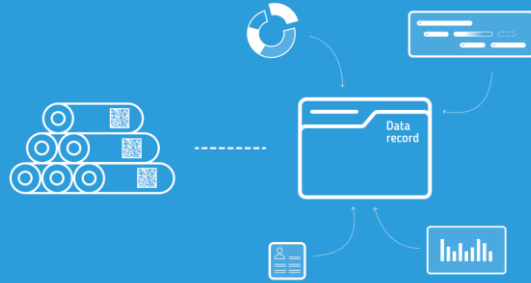
Solution



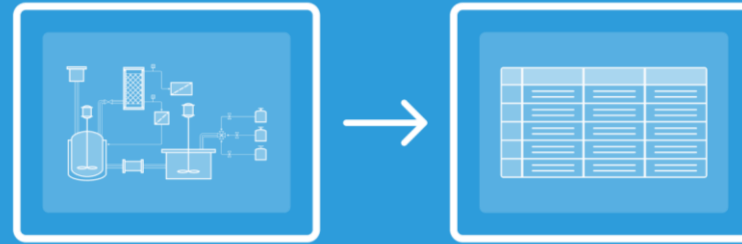
Benefits

Financial	Reduce cost for equipment procurement for projects and maintenance by ~11% .	Equipment cost can be reduced by ~6% .	SEP reduces the effort to transform P&IDs by at least 60% .	Data Quality assessments can be executed ~70% faster	Information lookup time is reduced by ~80% in operations.
	Specifications and status can be exchanged faster, more reliable. Tracking through the supply chain is enabled.	Passports and Augmented Reality allow internal and external workforce to always identify and find equipment on the shop floor.	SEP contextualizes information from documents/drawings with Master Data to highlight issues.	SEP can especially support during improvements and Digital Twin rollouts.	Internal and external workforce can access information anytime.

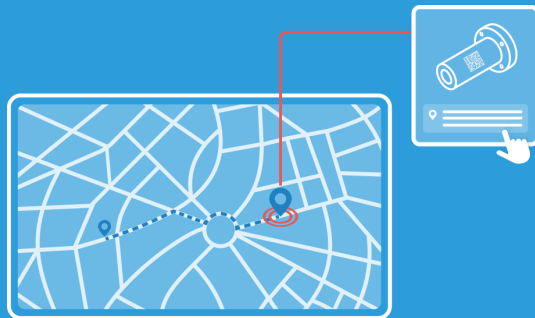
Artificial Intelligence can do what until today was not possible to do without massive investments



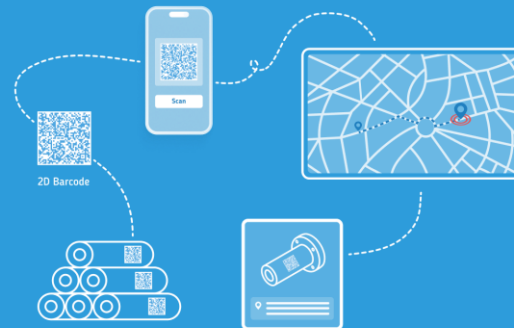
**Collect all data from various sources
to create trustful digital identities for equipment**



**Transform old technical drawings into digital
engineering and documentation**



Detect issues during engineering and project phases



**Semi-automate data hand-over between
engineering, construction and maintenance**

SEP has been built to harmonize Master Data for equipment and create a single-point-of-truth in brownfield

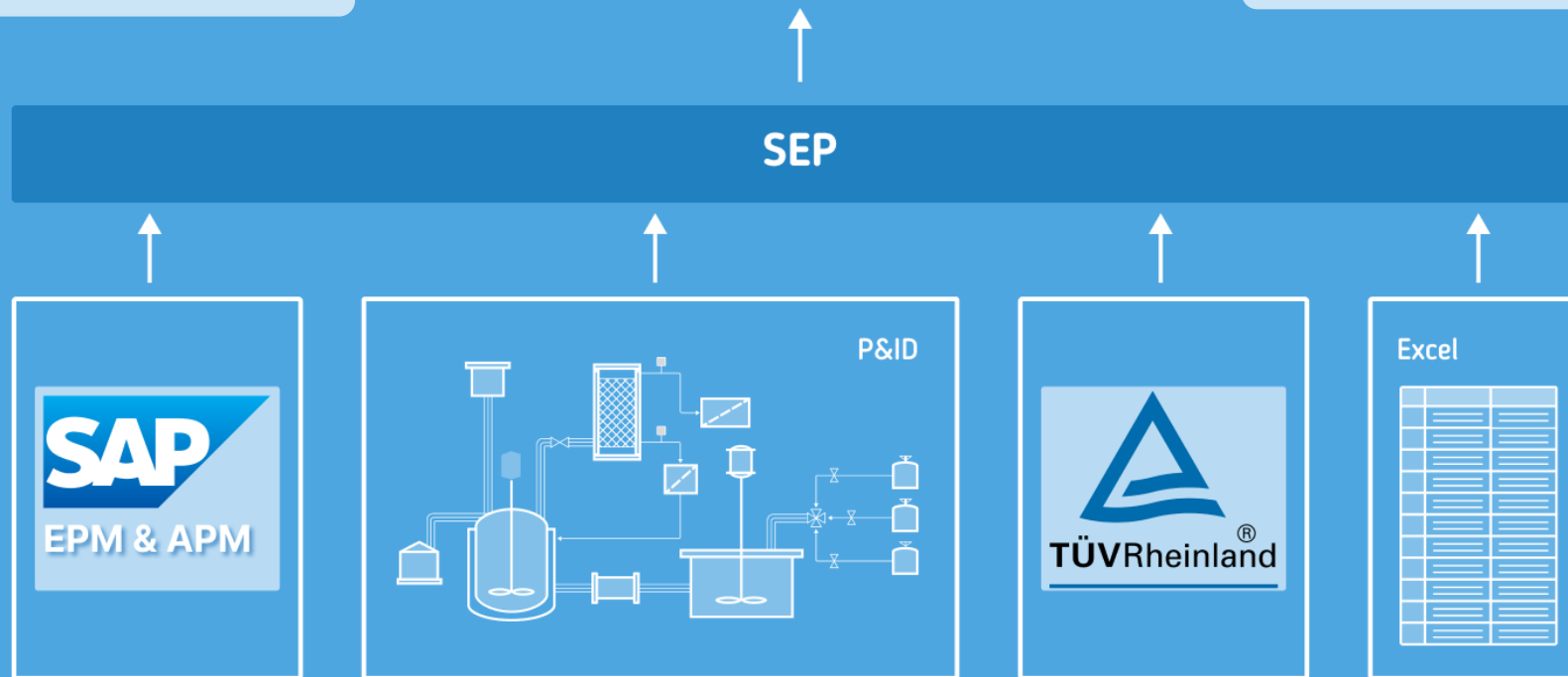
Advanced Analytics

SEP is using several different tools, from analytics to AI, to load data from all available sources that describe equipment. This data is then used to create a single, accurate record for each piece of equipment.



SAP integrated

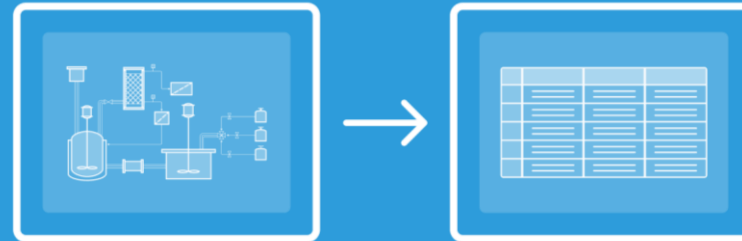
Information can be extracted and integrated from various SAP systems. Additionally, data from engineering, external suppliers and other internal apps can be quickly loaded and integrated.



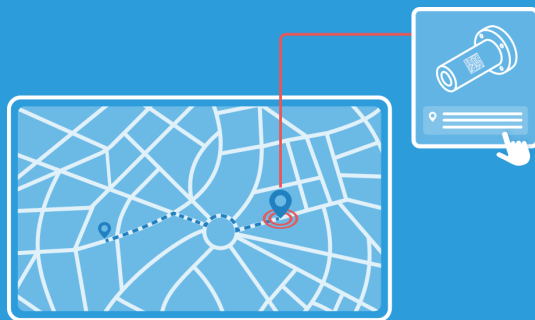
Artificial Intelligence can do what until today was not possible to do without massive investments



**Collect all data from various sources
to create trustful digital identities for equipment**



**Transform old technical drawings into digital
engineering and documentation**



Detect issues during engineering and project phases



**Semi-automate data hand-over between
engineering, construction and maintenance**

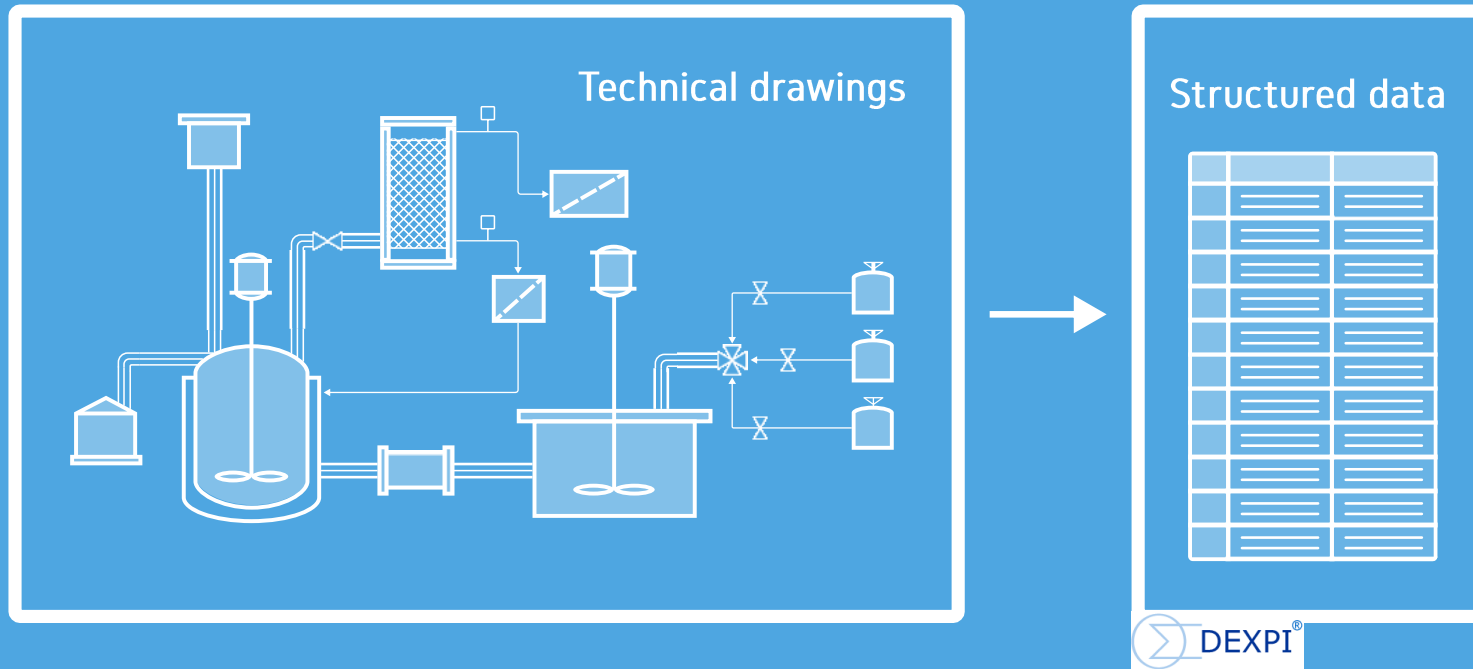
Machine Learning to generate a Digital Identity

SEP can use several different data sources to automatically generate a single data record for an equipment with a precision of >97%, using internal and external information on FLOC, equipment and inspection schedule granularity.

Digital Platform for internal and external access

SEP is a digital platform that can be used by internal and external stakeholders. Access and rights management can be managed inside the existing authentication providers and configured in SEP. The validation tool allows human-machine interaction to validate master data and inspection schedules.



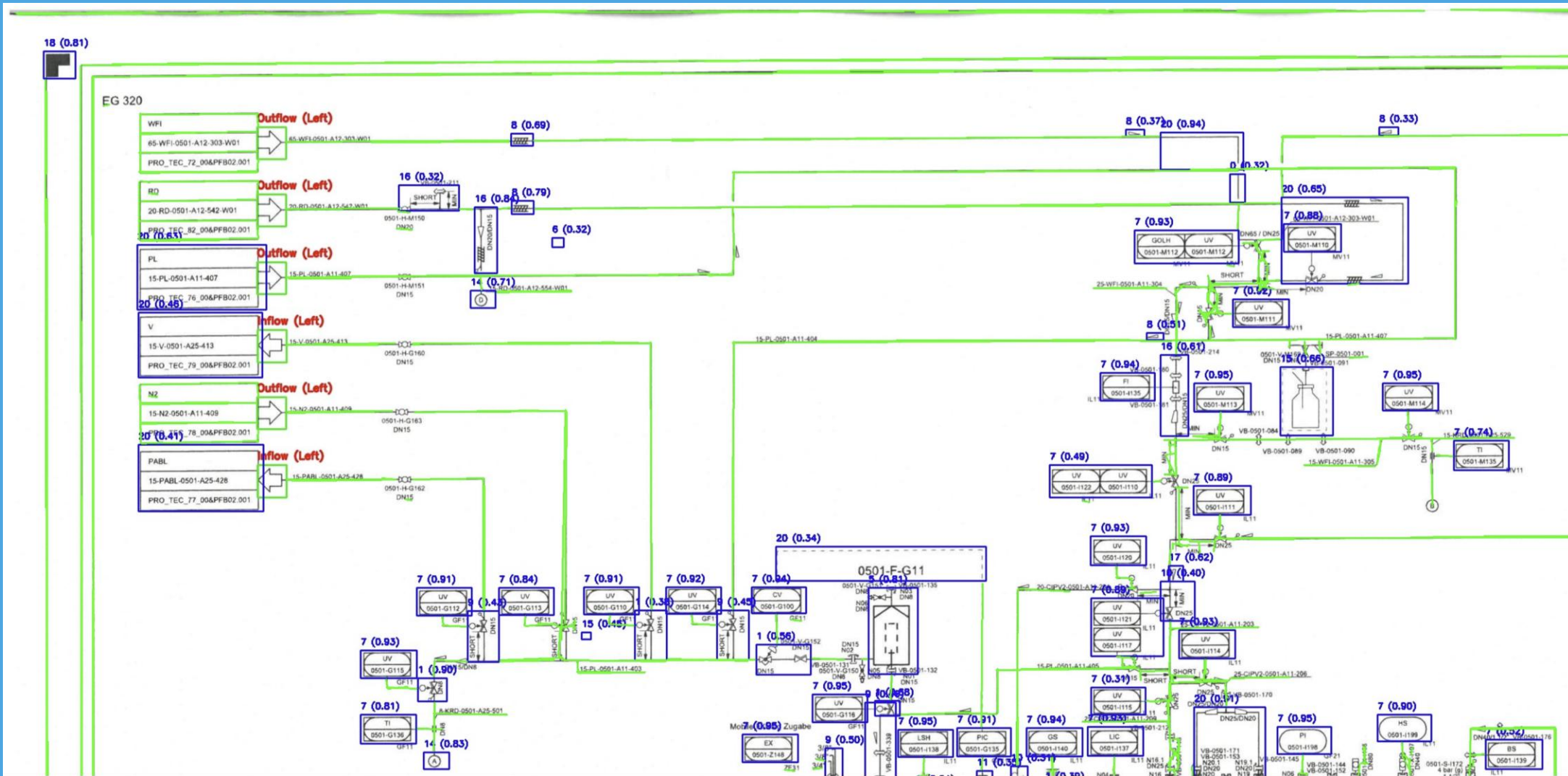


Machine Learning to transform technical drawings into data

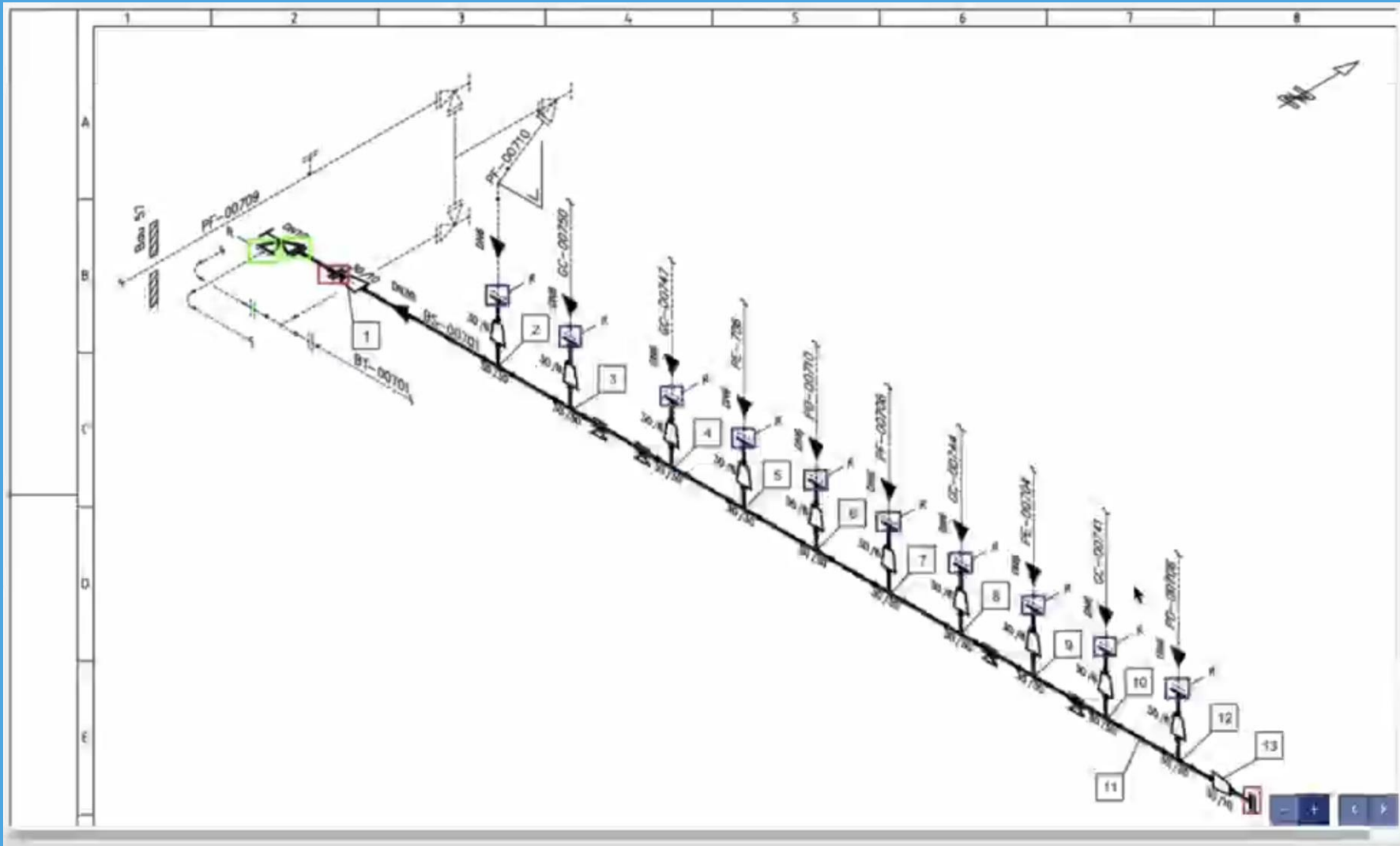
SEP can understand technical drawings like P&IDs and extracts different equipment types and their naming. Based on this information, tags can be mapped to FLOCs with a precision of ~99%. SEP generates powerful spreadsheets and DEXPI XML files, containing all relevant master data and issues.

Data Governance for SAP master data, technical drawings and COMOS and AVEVA

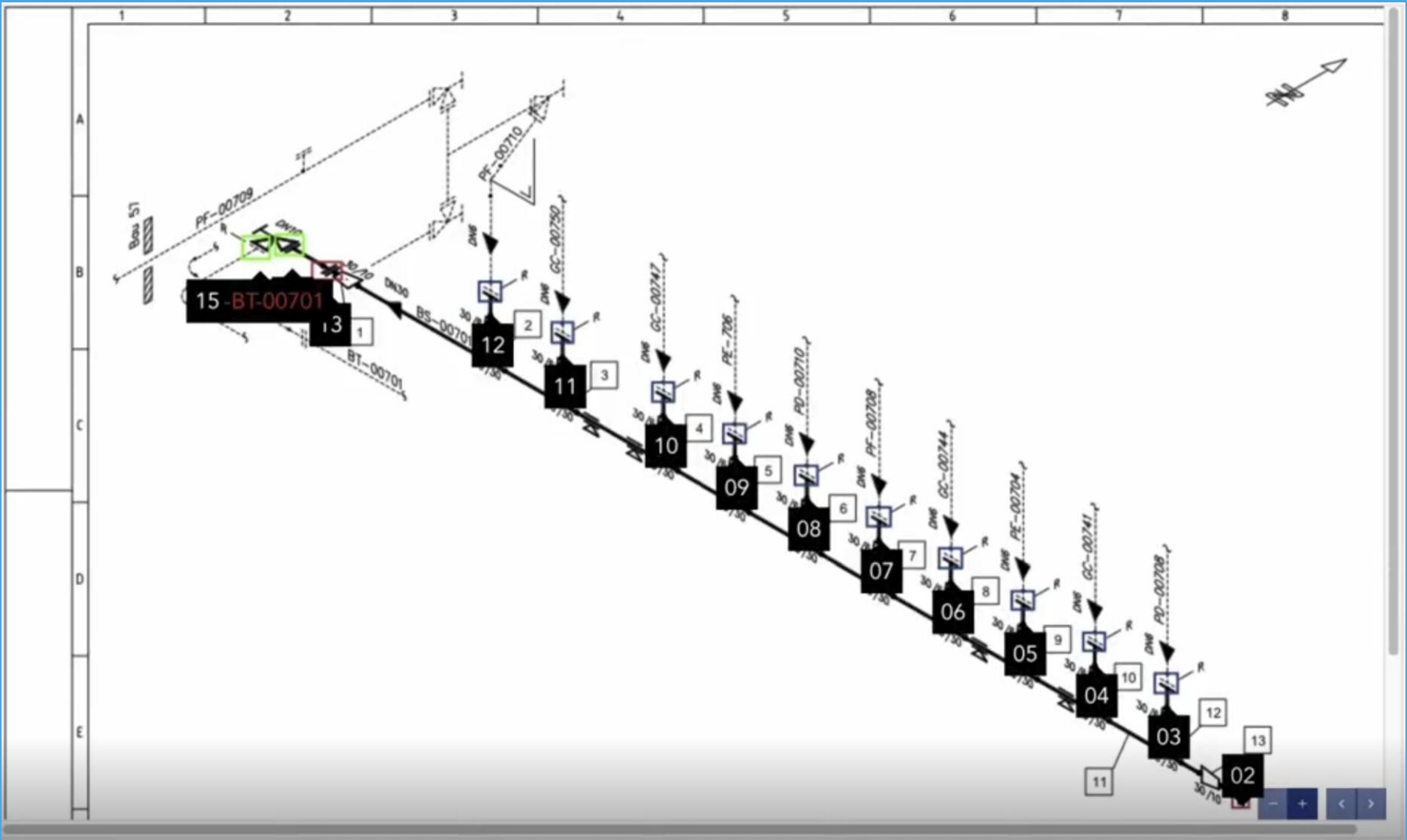
SEP can contextualize all relevant data sources to create a single-point-of-truth. This information can be used to generate missing data, correct existing data and enable the setup of Digital Twins.



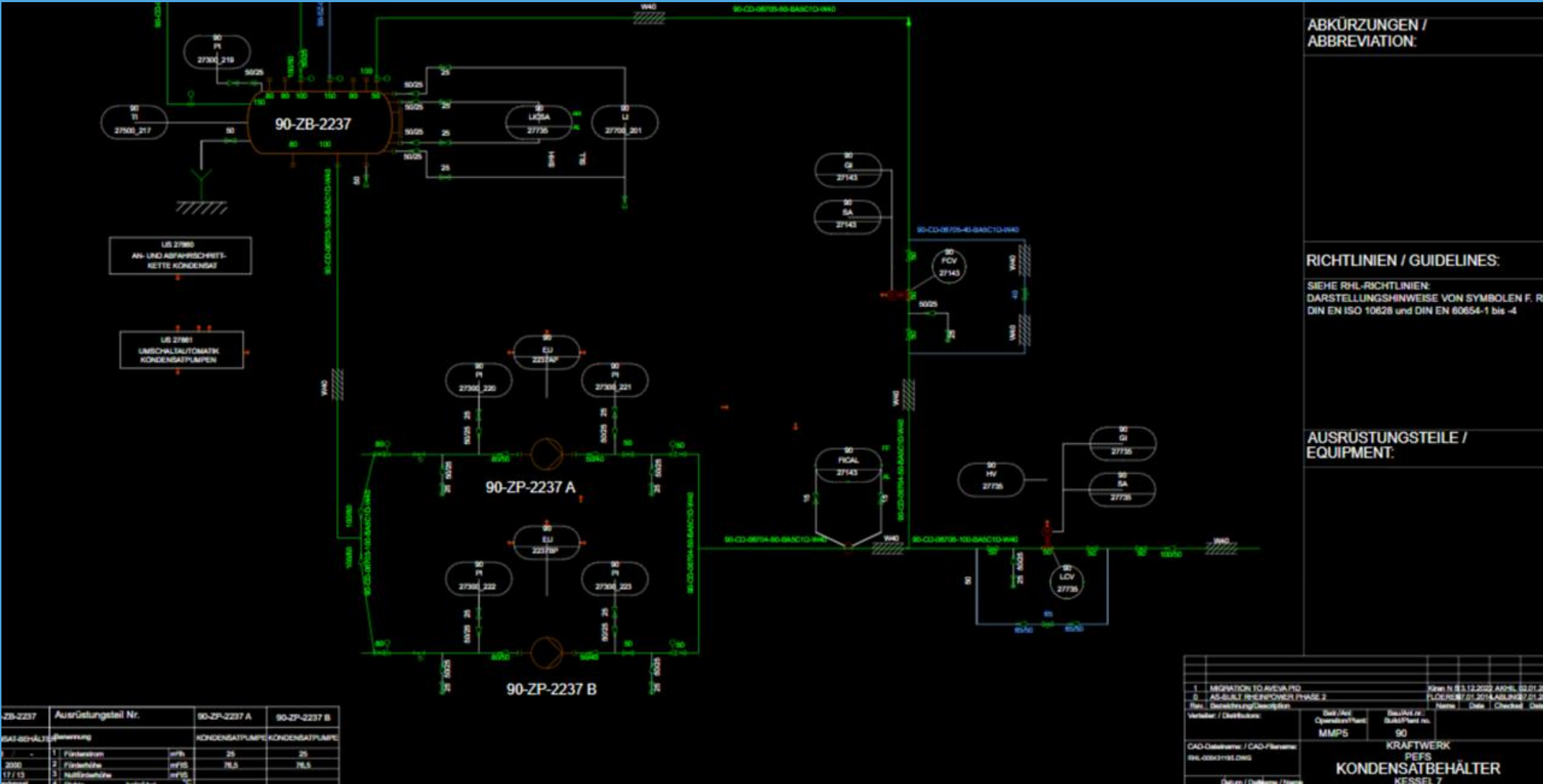
Even more complex structures can be detected from scans or PDF files and transformed into digital information



Even more complex structures can be detected from scans or PDF files and transformed into digital information



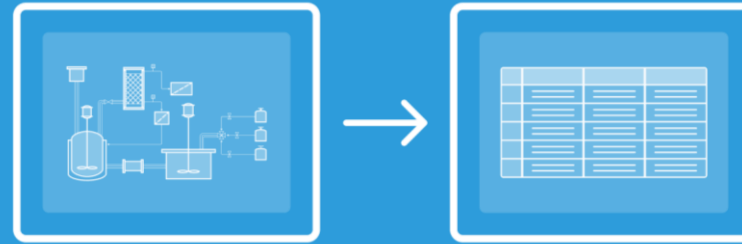
The extracted information can be contextualized with more information and used to semi-automatically build drawings or twins



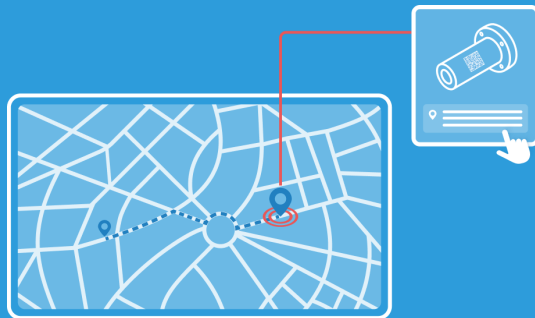
Artificial Intelligence can do what until today was not possible to do without massive investments



**Collect all data from various sources
to create trustful digital identities for equipment**



**Transform old technical drawings into digital
engineering and documentation**



Detect issues during engineering and project phases



**Semi-automate data hand-over between
engineering, construction and maintenance**

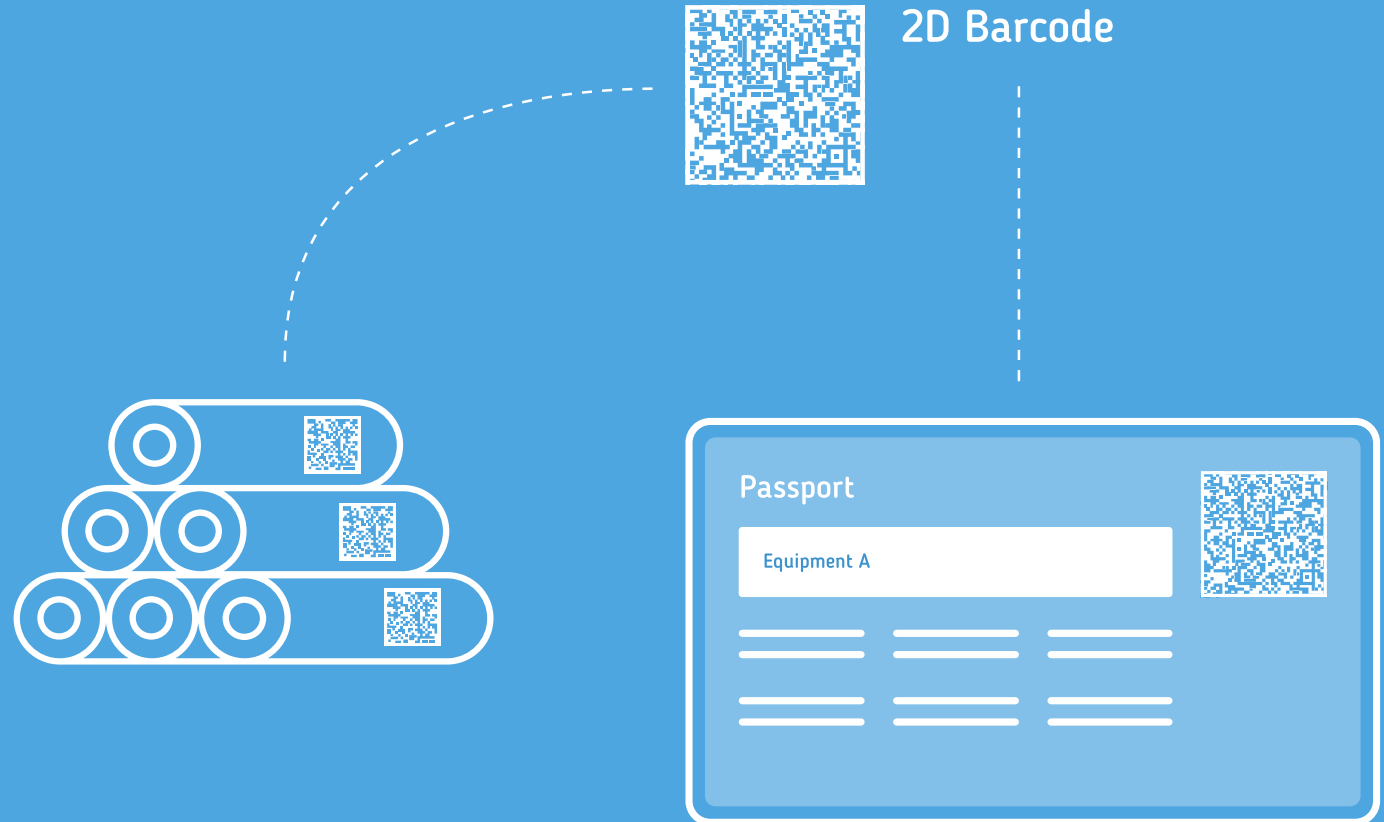
Digital Platform for internal and external access, barcode enabled

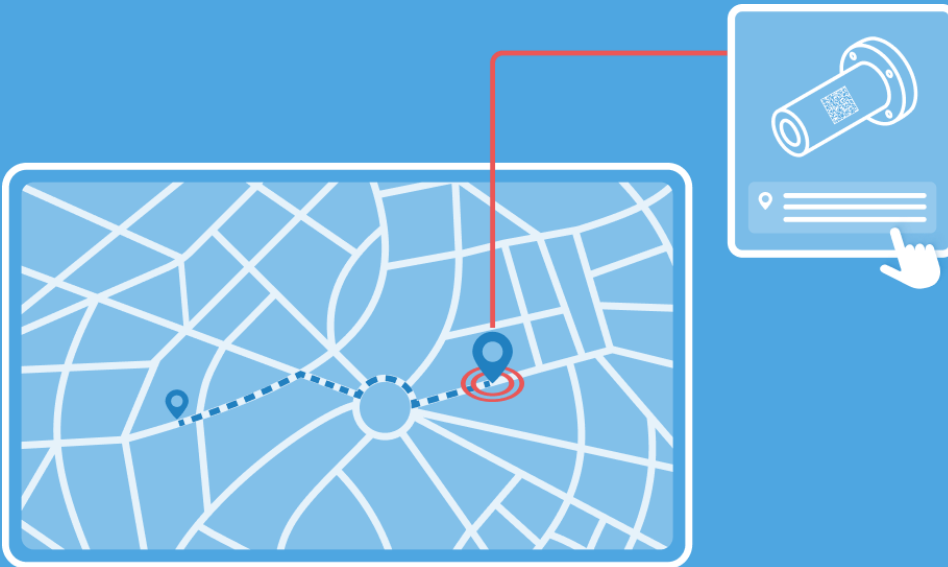
SEP is a digital platform that can be used by internal and external stakeholders. Access and rights management can be managed inside the existing authentication providers and configured in SEP.

2D barcodes can be used to link the equipment to the equipment passport.

Workflow tracking

SEP allows users to track status and position of equipment during a Turn Around. In the same time, inspection and maintenance during daily business is supported and transformed into a process management environment.





Material tracking for greater transparency throughout the lifecycle

SEP helps you find your equipment faster and more reliably, all based on 2D barcodes. SEP also supports the use of LoRaWAN GPS trackers and RFID for even more accurate tracking.

Workflow tracking

SEP allows users to track the status and position of equipment during all activities. The Status can be customized to your needs. Ensuring a more efficient communication.

Turnaround Tracking

SEP helps reduce your turnaround time by providing easy to use advanced status tracking. Users can access the data from anywhere.

Compatibility of the Turnaround Tracking

The tool is fully compatible with Roser and other formats, allowing data to be imported and exported quickly and easily.



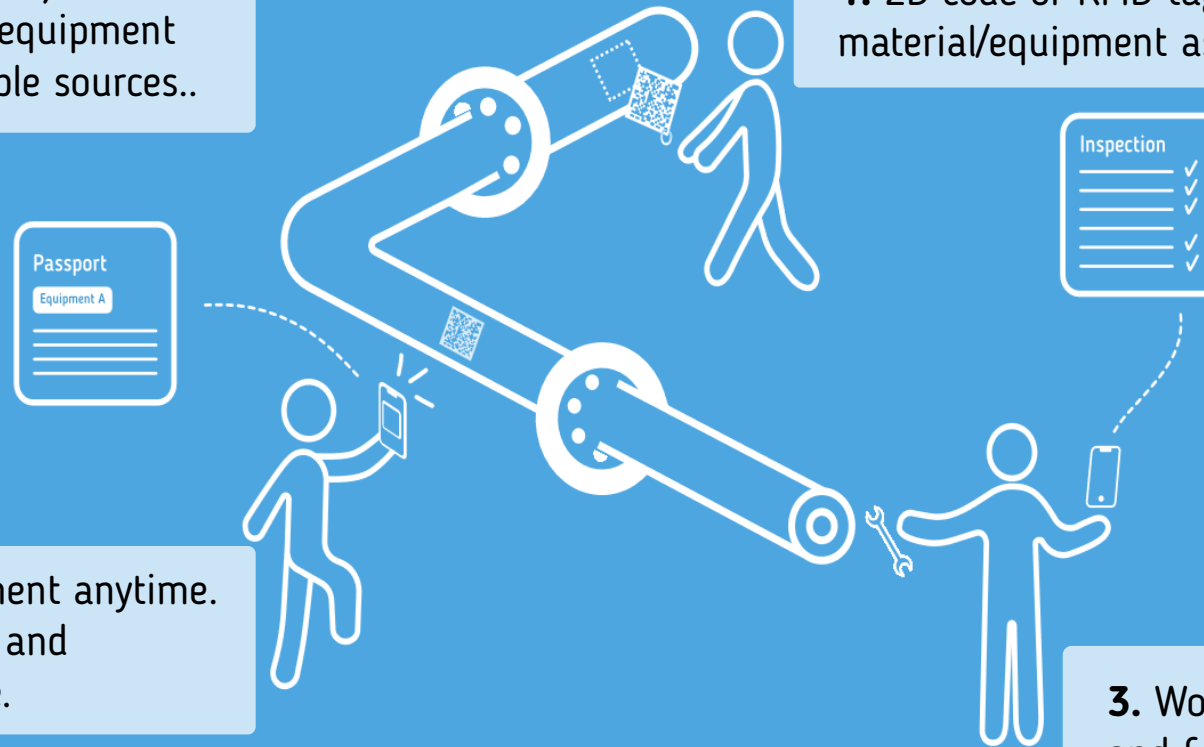
How does the Material Tracking work (simplified)?

Smart Equipment Passport (SEP) creates digital identities for material & equipment by aggregating data from multiple sources..

1. 2D code or RFID tag is attached to the material/equipment as early as possible.

2. Everyone can identify equipment anytime. Location and status are tracked and information is always accessible.

3. Work can be documented inside SEP and from here to integrated to any software. Instructions can be used.



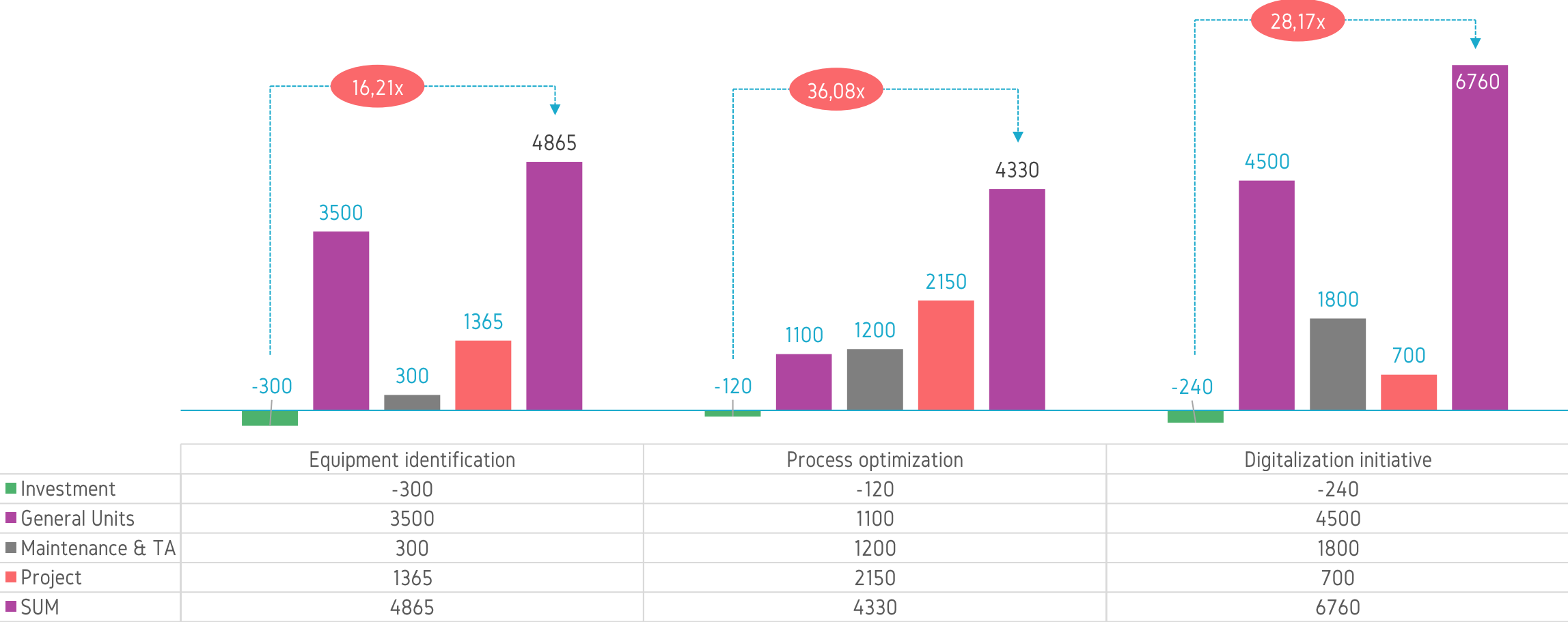
How does the Material Tracking work (simplified)?



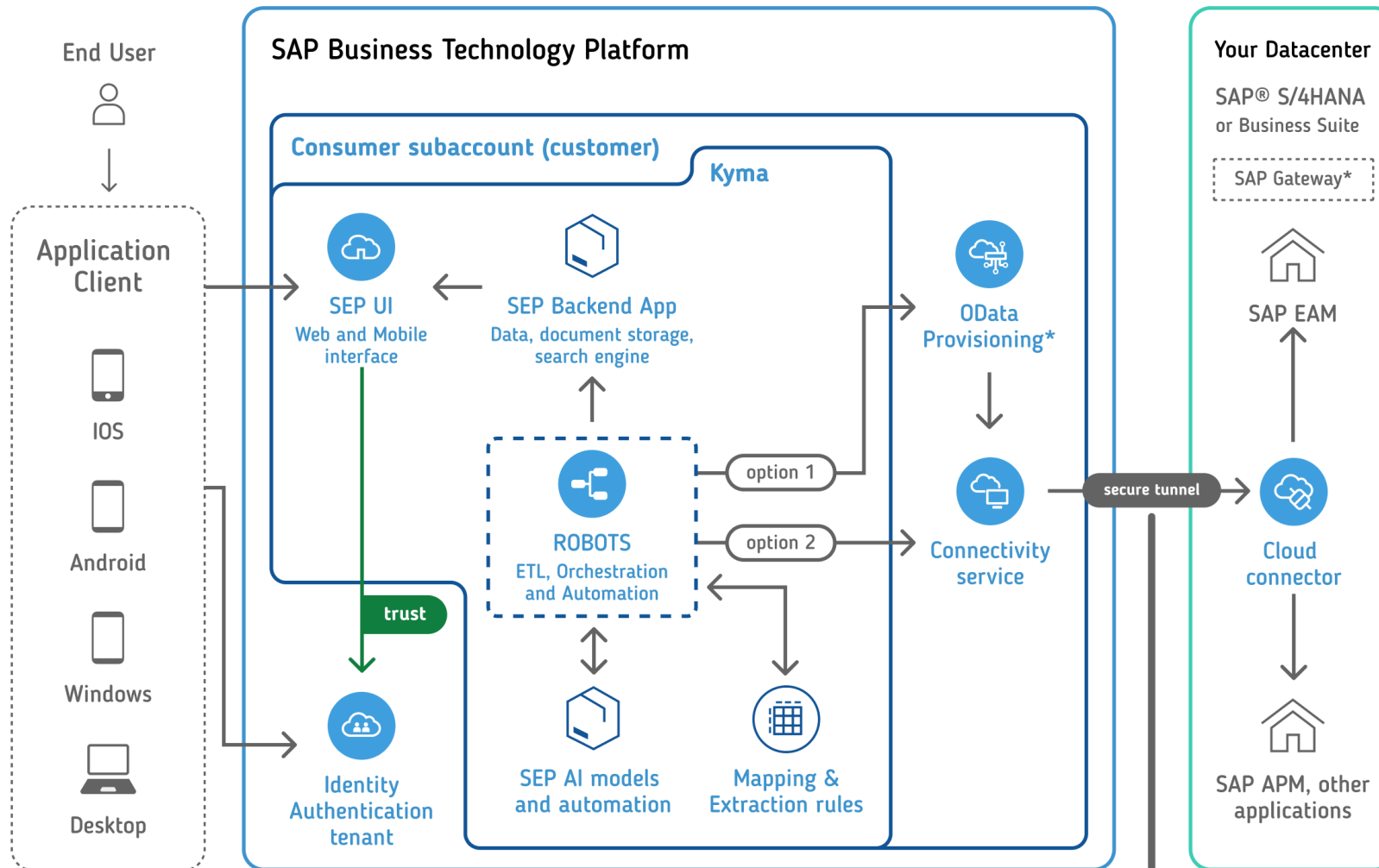
Artificial Intelligence can today be used to enable more efficient production and digital production processes

Three key use cases for action in context with SEP
Net present value in k EUR of investment for the first year

Normalized numbers to compare:
Cost item Value
Project material 100 Mio EUR
Maintenance overall 100 Mio EUR / year



SEP is perfectly integrate into the SAP BTP and can be installed within a few hours



* OData services via SAP Business Technology Platform OData provisioning or SAP Gateway (see details about deployment options in [SAP Note 1830712](#))

coac