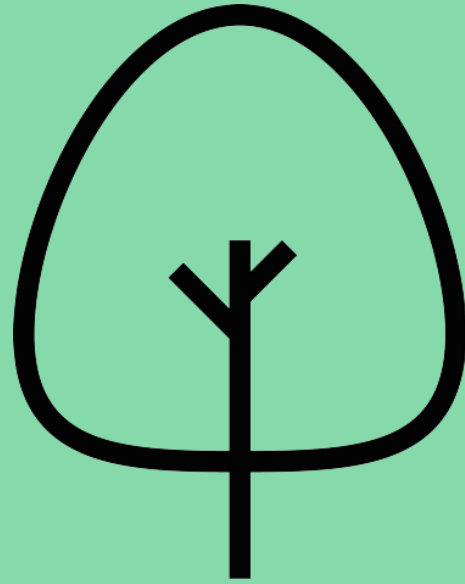


Lyndhurst

Primary School & Nursery



**Lyndhurst
Primary
School**

Year 5 at Lyndhurst



Welcome!

Harry Peddle

Volga Class Teacher

Assistant Headteacher –
Teaching & Learning

Maths Lead

Charlotte Moon

Orinoco Class Teacher

Humanities Lead

Fadoua Idrissi

SEND Teaching Assistant
Orinoco Class

Rita Asante

SEND Teaching Assistant
Orinoco Class

Our Difference

We offer a unique, well-rounded approach to education that combines academic excellence, creative enrichment, pastoral care, and meaningful partnerships to help every child thrive beyond the classroom.

Our offer for all children



- **Weekly curriculum and singing music lessons from specialist**
- **Annually, a term of specialist dance tuition, integrating movement with abstract concepts**
- **Half a year of weekly swimming lessons for children in Y3 and above**
- **Specialist sports sessions**

Curriculum Map

Autumn One

English – Hidden Figures

Maths – Numbers to 1 000 000, place value and Addition and Subtraction

Science – Earth & Space

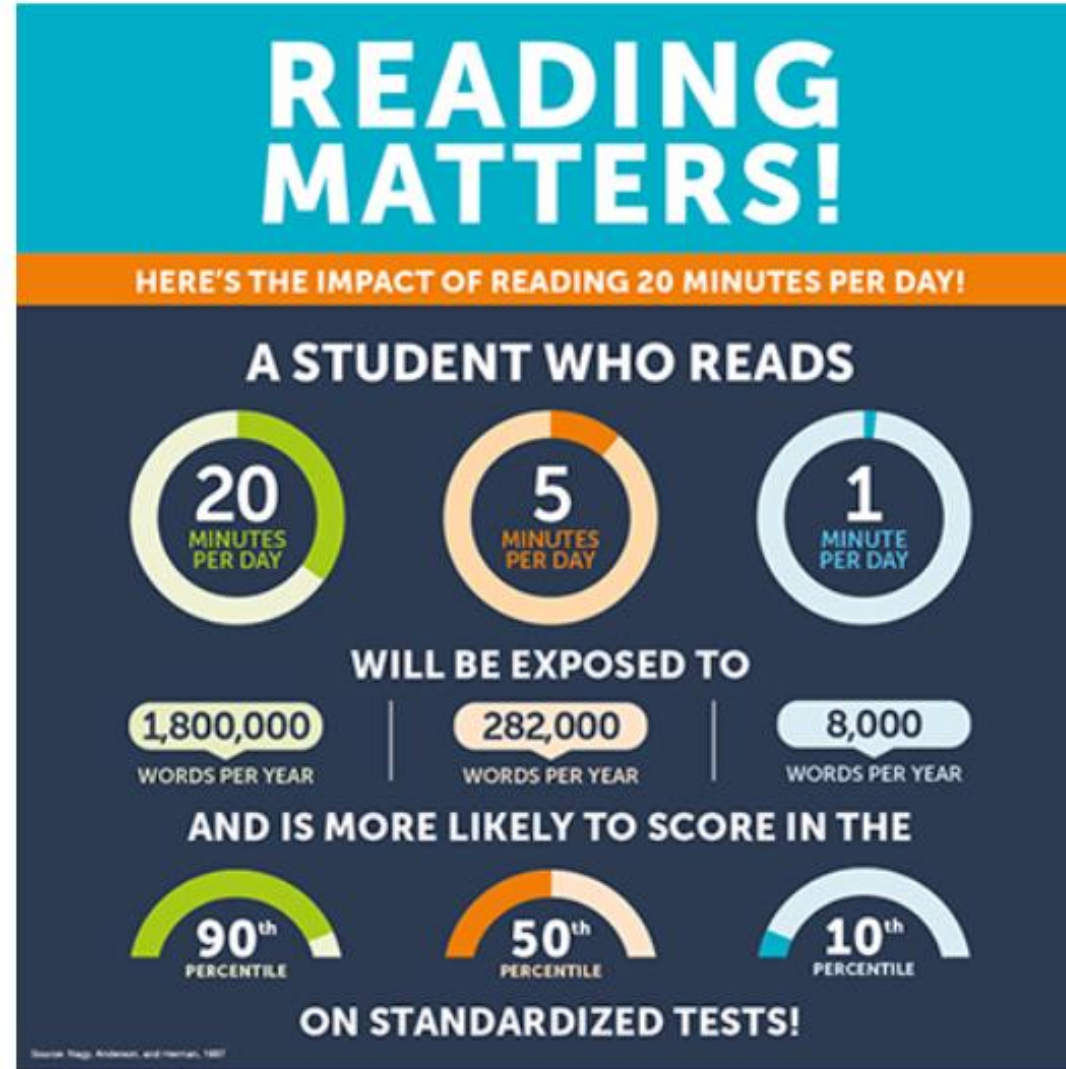
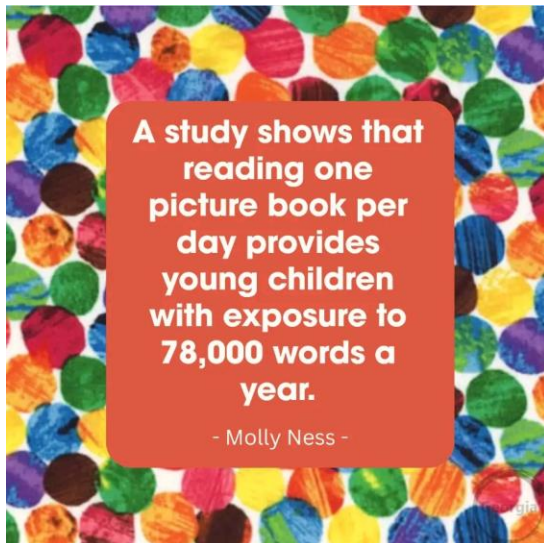


Year Group Hubs

EXPLORE

Explore what your child will be learning this term. You can find out about the entire curriculum for each subject by looking on the [Our Curriculum](#) page.

Reading



Homework

Compulsory:



Twice weekly



Daily

Optional:



Set and due on Monday

Letter-join 



Trips

Autumn Term –

Mobile Planetarium Workshop (in school visit) – Science

Neasdon Manda- understanding Hinduism workshop – RE

Spring Term –

Horniman Museum –History of Benin Workshop – History

Courtauld Gallery Self led – Art

Summer Term –

V&A Think Small Workshop – Science/DT

Field work Trip – Geography

London Children's Ballet Performance

**Voluntary
Contributions**



Statutory Assessments

There are no formal or statutory National Assessments in Year Five.

However, we are starting to prepare children for their SATs in Year Six.



How to support your child

- Read each day with your child.
- Talk to your child about what they've learnt at school
- Create engaging opportunities to write (postcards, thank you letters or diaries).
- Explore real life Maths through shopping and cooking.



How to support your child

- Remind your child that practice is what helps us learn and develop – **number and letter reversals**
- Use a ruler, cut with scissors, stick with glue and colour with pencils and crayons – develops, control, precision, accuracy and presentation.
- Be Positive – don't let your perception of education cloud their view of themselves
- (avoid phrases like 'I am bad at maths').
- Check the Lyndhurst Scoop for key information.
- Talk to your child about what they have been learning each day.



How to support your child

Number Fact Focus

YEAR 5 Autumn Term 1 Times tables: 4s	YEAR 5 Autumn Term 1 Times tables: 8s	YEAR 5 Autumn Term 2 Times tables: 3s	YEAR 5 Autumn Term 2 Times tables: 6s
X 4 1 x 4 = 4 2 x 4 = 8 3 x 4 = 12 4 x 4 = 16 5 x 4 = 20 6 x 4 = 24 7 x 4 = 28 8 x 4 = 32 9 x 4 = 36 10 x 4 = 40 11 x 4 = 44 12 x 4 = 48	÷ 4 4 ÷ 4 = 1 8 ÷ 4 = 2 12 ÷ 4 = 3 16 ÷ 4 = 4 20 ÷ 4 = 5 24 ÷ 4 = 6 28 ÷ 4 = 7 32 ÷ 4 = 8 36 ÷ 4 = 9 40 ÷ 4 = 10 44 ÷ 4 = 11 48 ÷ 4 = 12	X 8 1 x 8 = 8 2 x 8 = 16 3 x 8 = 24 4 x 8 = 32 5 x 8 = 40 6 x 8 = 48 7 x 8 = 56 8 x 8 = 64 9 x 8 = 72 10 x 8 = 80 11 x 8 = 88 12 x 8 = 96	÷ 8 8 ÷ 8 = 1 16 ÷ 8 = 2 24 ÷ 8 = 3 32 ÷ 8 = 4 40 ÷ 8 = 5 48 ÷ 8 = 6 56 ÷ 8 = 7 64 ÷ 8 = 8 72 ÷ 8 = 9 80 ÷ 8 = 10 88 ÷ 8 = 11 96 ÷ 8 = 12
X 3 1 x 3 = 3 2 x 3 = 6 3 x 3 = 9 4 x 3 = 12 5 x 3 = 15 6 x 3 = 18 7 x 3 = 21 8 x 3 = 24 9 x 3 = 27 10 x 3 = 30 11 x 3 = 33 12 x 3 = 36	÷ 3 3 ÷ 3 = 1 6 ÷ 3 = 2 9 ÷ 3 = 3 12 ÷ 3 = 4 15 ÷ 3 = 5 18 ÷ 3 = 6 21 ÷ 3 = 7 24 ÷ 3 = 8 27 ÷ 3 = 9 30 ÷ 3 = 10 33 ÷ 3 = 11 36 ÷ 3 = 12	X 6 1 x 6 = 6 2 x 6 = 12 3 x 6 = 18 4 x 6 = 24 5 x 6 = 30 6 x 6 = 36 7 x 6 = 42 8 x 6 = 48 9 x 6 = 54 10 x 6 = 60 11 x 6 = 66 12 x 6 = 72	÷ 6 6 ÷ 6 = 1 12 ÷ 6 = 2 18 ÷ 6 = 3 24 ÷ 6 = 4 30 ÷ 6 = 5 36 ÷ 6 = 6 42 ÷ 6 = 7 48 ÷ 6 = 8 54 ÷ 6 = 9 60 ÷ 6 = 10 66 ÷ 6 = 11 72 ÷ 6 = 12
YEAR 5 Spring Term 2 Times tables: 11s	YEAR 5 Spring Term 2 Times tables: 7s	YEAR 5 Spring Term 1 Times tables: 12s	YEAR 5 Spring Term 1 Times tables: 9s
X 11 1 x 11 = 11 2 x 11 = 22 3 x 11 = 33 4 x 11 = 44 5 x 11 = 55 6 x 11 = 66 7 x 11 = 77 8 x 11 = 88 9 x 11 = 99 10 x 11 = 110 11 x 11 = 121 12 x 11 = 132	÷ 11 11 ÷ 11 = 1 22 ÷ 11 = 2 33 ÷ 11 = 3 44 ÷ 11 = 4 55 ÷ 11 = 5 66 ÷ 11 = 6 77 ÷ 11 = 7 88 ÷ 11 = 8 99 ÷ 11 = 9 110 ÷ 11 = 10 121 ÷ 11 = 11 132 ÷ 11 = 12	X 7 1 x 7 = 7 2 x 7 = 14 3 x 7 = 21 4 x 7 = 28 5 x 7 = 35 6 x 7 = 42 7 x 7 = 49 8 x 7 = 56 9 x 7 = 63 10 x 7 = 70 11 x 7 = 77 12 x 7 = 84	÷ 7 7 ÷ 7 = 1 14 ÷ 7 = 2 21 ÷ 7 = 3 28 ÷ 7 = 4 35 ÷ 7 = 5 42 ÷ 7 = 6 49 ÷ 7 = 7 56 ÷ 7 = 8 63 ÷ 7 = 9 70 ÷ 7 = 10 77 ÷ 7 = 11 84 ÷ 7 = 12
X 12 1 x 12 = 12 2 x 12 = 24 3 x 12 = 36 4 x 12 = 48 5 x 12 = 60 6 x 12 = 72 7 x 12 = 84 8 x 12 = 96 9 x 12 = 108 10 x 12 = 120 11 x 12 = 132 12 x 12 = 144	÷ 12 12 ÷ 12 = 1 24 ÷ 12 = 2 36 ÷ 12 = 3 48 ÷ 12 = 4 60 ÷ 12 = 5 72 ÷ 12 = 6 84 ÷ 12 = 7 96 ÷ 12 = 8 108 ÷ 12 = 9 120 ÷ 12 = 10 132 ÷ 12 = 11 144 ÷ 12 = 12	X 9 1 x 9 = 9 2 x 9 = 18 3 x 9 = 27 4 x 9 = 36 5 x 9 = 45 6 x 9 = 54 7 x 9 = 63 8 x 9 = 72 9 x 9 = 81 10 x 9 = 90 11 x 9 = 99 12 x 9 = 108	÷ 9 9 ÷ 9 = 1 18 ÷ 9 = 2 27 ÷ 9 = 3 36 ÷ 9 = 4 45 ÷ 9 = 5 54 ÷ 9 = 6 63 ÷ 9 = 7 72 ÷ 9 = 8 81 ÷ 9 = 9 90 ÷ 9 = 10 99 ÷ 9 = 11 108 ÷ 9 = 12

Important Notices



- **PE kits** (green t-shirt and sweatshirt and black shorts or tracksuit bottoms or leggings and appropriate sports shoes) should be worn to school on **Mondays**.
- **Swimming** will take place in the Autumn Term and Spring 1st half term (exact dates will be emailed to you) – please ensure your child can change themselves independently.
- PE kits should be worn on all school trips.
- Water bottles (labelled) in school taken home and washed each day.
- Collecting your child – please be visible and close



Important Notices

Appropriate Dress

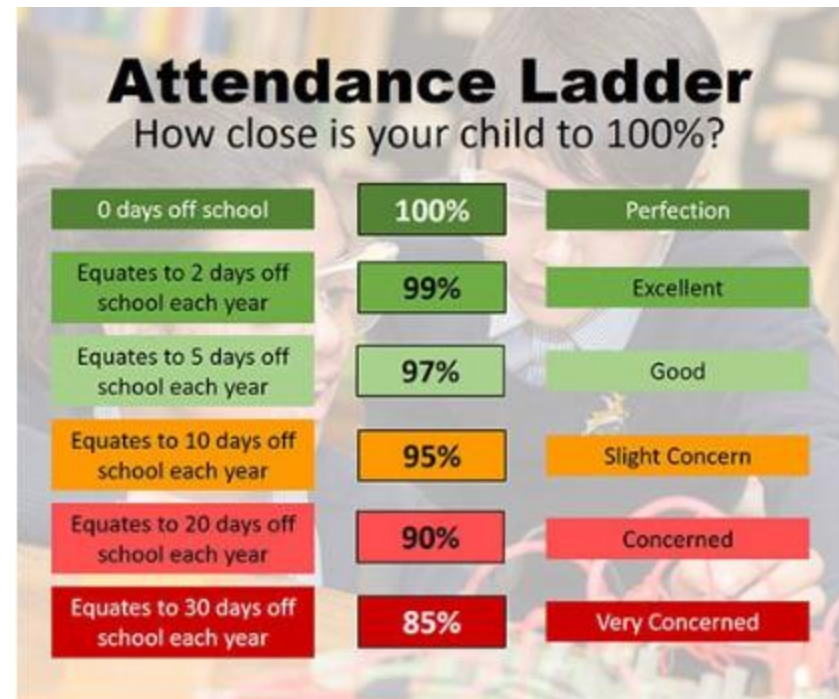
- Coats – for seasonal changes in British weather
- Clothes – labelled
- No nail varnish
- Stud earrings – **no** hoops
- Sensible and comfortable footwear – crocs can be worn but not to play on the muga
- Hair tied back – head lice



Attendance

The Positives – research shows:

- Children who have 95% attendance or above do better at school and better in later life
- Children who have 95% attendance or above are more confident, happier and find school more enjoyable
- Children who have 95% attendance or above find transition to secondary school easier



Attendance

Reminder about timings: **8:55 – line up**, if you arrive 9:00 – 9:14 you get a late mark.

If you arrive 9:15 onwards you get an unauthorised mark as registers have closed

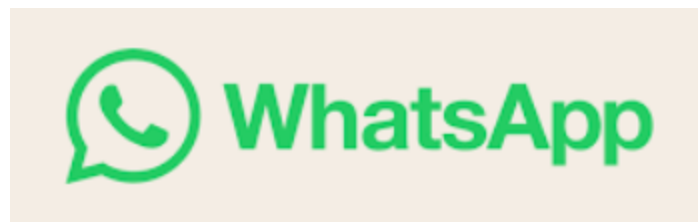
New DfE attendance statutory guidance with **strict national fine thresholds** around **term time absence** – **10 unauthorised sessions = 5 days in 10 week period**

If you arrive after 9:15, that counts as unauthorised so that would count as a session.

If you really need to be absent you must fill out a request form and be prepared to provide evidence.

Please avoid making appointments during the school day as children miss key learning.

Staying Connected

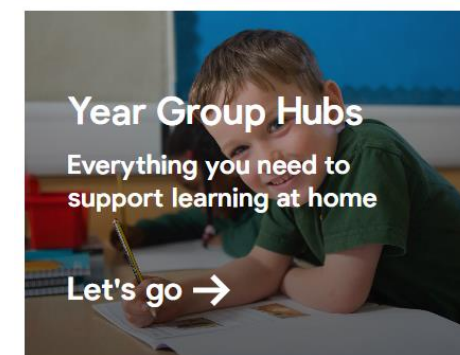


hpeddle@Lyndhurst.southwark.sch.uk

cmoon@Lyndhurst.southwark.sch.uk



www.lyndhurstprimaryschool.com
Welcome to Lyndhurst Primary School



General Questions

- How can I know what's going on?
- Please check The Scoop and our website regularly.
- How can I contact the class teacher?
- Please send them a message via email.
- What if I'm worried about my child?
- In the first instance please contact the class teacher. It is possible that they will pass this on to their phase leader or a member of the leadership team who will follow up with you.



General Questions

- I'm not sure about which calculation methods or English terminology you use.
- How can I get some help?
- Our English subject leader is Ms Harwood & our Maths subject lead is Mr Peddle.
- Do contact them if you would like further information.



Assistant Head for Teaching and Learning
Maths Lead and Year Five Teacher



Assistant Head for Inclusion
SENCO and English Lead

General Questions

- My child has SEND and I don't know what support they will receive?
- Speak initially to your child's class teacher and to Ms Harwood (SENDCo) at one of our regular SEND coffee mornings if you need further information. Please see the Scoop.



SCHOOL INFORMATION REPORT

Here you can find all of the information you need about Special Educational Needs and Disabilities at Lyndhurst Primary School including identification and assessment, support available and monitoring and reporting of progress.

Special Educational Need Provision at Lyndhurst Primary School



School Website



Assistant Head for Inclusion
SENCO and English Lead

OUR VALUES

In Spring 2022, we came together as a school community to think about what qualities makes Lyndhurst children so special.

These qualities are shared below and are at the heart of everything we do.

We are...

ADVOCATES

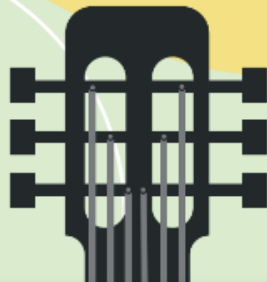
GLOBAL CITIZENS

RESILIENT

COURTEOUS

FREE THINKERS

WE ARE LYNDHURST



Lyndhurst
Primary
School

