

**Lyndhurst
Primary
School**

Year 6 at Lyndhurst

Welcome!



Helena Savvides
Zambezi Class Teacher
Year 6 Lead
Science Lead



Eleanor Hobbs
Mississippi Class Teacher
PE Lead



Mr Lewis
Year 6 SEND
Teaching Assistant



Ms McKenna
Year 6 SEND
Teaching Assistant

Our Difference

We offer a unique, well-rounded approach to education that combines academic excellence, creative enrichment, pastoral care, and meaningful partnerships to help every child thrive beyond the classroom.

Our offer for all children



- Weekly curriculum and singing music lessons from specialist
- Annually, a term of specialist dance tuition, integrating movement with abstract concepts
- Half a year of weekly swimming lessons for children in Y3 and above
- Specialist sports sessions

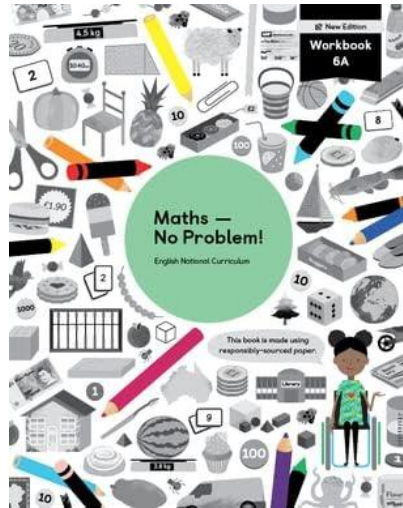
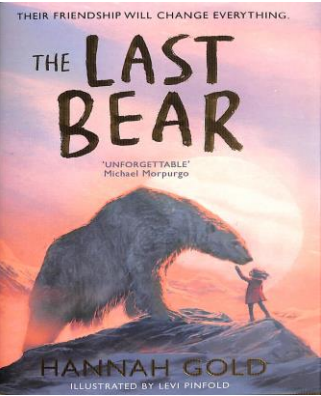
Curriculum Map

Autumn One

English – The Last Bear

Maths – Numbers to 10 Million, BODMAS, Four Operations, Arithmetic Fluency

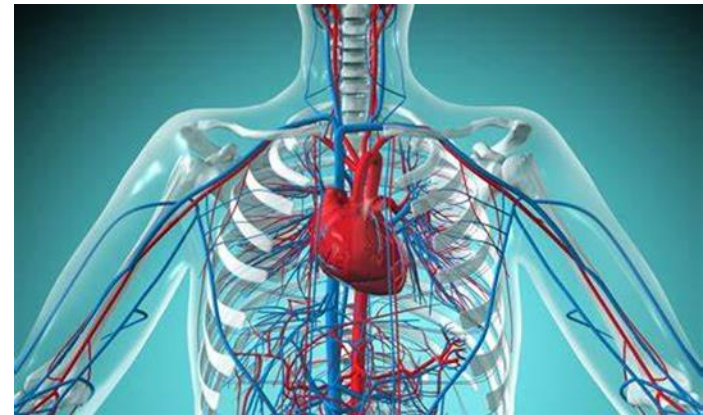
Science – The Circulatory System



Year Group Hubs

EXPLORE

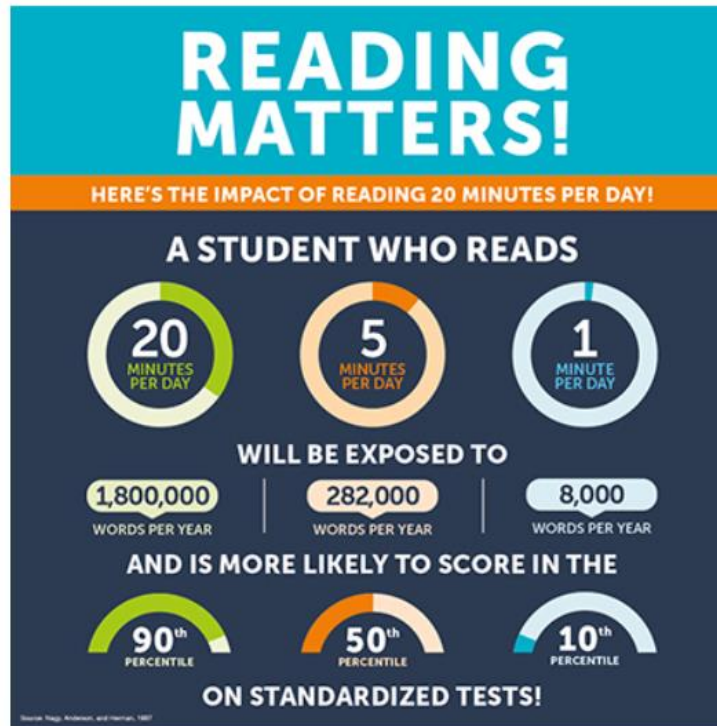
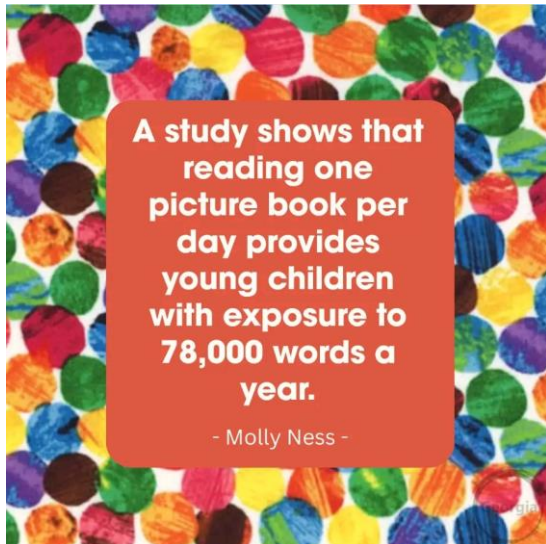
Explore what your child will be learning this term. You can find out about the entire curriculum for each subject by looking on the Our Curriculum page.



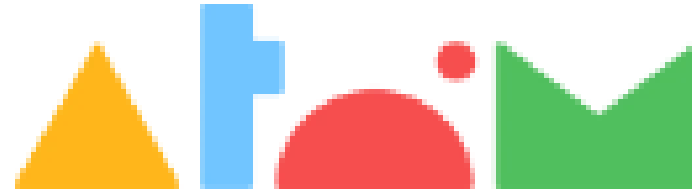
Reading



**Encourage your child to
read at home every day**



Homework



Tuesday – Reading comprehension
Due: Friday

Friday – Maths and Grammar set
Due: Tuesday



Trips

Autumn Term

The Lion King at the Theatre- Wednesday 1st October

Darwin and Evolution workshop – Thursday 27th November /
Monday 1st Dec

Southwark Citizenship workshop – Thursday 4th Dec



Number Fact Focus

YEAR 6 Autumn Term 1 Times tables: 4s

X 4

$1 \times 4 = 4$
 $2 \times 4 = 8$
 $3 \times 4 = 12$
 $4 \times 4 = 16$
 $5 \times 4 = 20$
 $6 \times 4 = 24$
 $7 \times 4 = 28$
 $8 \times 4 = 32$
 $9 \times 4 = 36$
 $10 \times 4 = 40$
 $11 \times 4 = 44$
 $12 \times 4 = 48$

÷ 4

$4 \div 4 = 1$
 $8 \div 4 = 2$
 $12 \div 4 = 3$
 $16 \div 4 = 4$
 $20 \div 4 = 5$
 $24 \div 4 = 6$
 $28 \div 4 = 7$
 $32 \div 4 = 8$
 $36 \div 4 = 9$
 $40 \div 4 = 10$
 $44 \div 4 = 11$
 $48 \div 4 = 12$

YEAR 6 Autumn Term 1 Times tables: 8s

X 8

$1 \times 8 = 8$
 $2 \times 8 = 16$
 $3 \times 8 = 24$
 $4 \times 8 = 32$
 $5 \times 8 = 40$
 $6 \times 8 = 48$
 $7 \times 8 = 56$
 $8 \times 8 = 64$
 $9 \times 8 = 72$
 $10 \times 8 = 80$
 $11 \times 8 = 88$
 $12 \times 8 = 96$

÷ 8

$8 \div 8 = 1$
 $16 \div 8 = 2$
 $24 \div 8 = 3$
 $32 \div 8 = 4$
 $40 \div 8 = 5$
 $48 \div 8 = 6$
 $56 \div 8 = 7$
 $64 \div 8 = 8$
 $72 \div 8 = 9$
 $80 \div 8 = 10$
 $88 \div 8 = 11$
 $96 \div 8 = 12$

YEAR 6 Autumn Term 2 Times tables: 3s

X 3

$1 \times 3 = 3$
 $2 \times 3 = 6$
 $3 \times 3 = 9$
 $4 \times 3 = 12$
 $5 \times 3 = 15$
 $6 \times 3 = 18$
 $7 \times 3 = 21$
 $8 \times 3 = 24$
 $9 \times 3 = 27$
 $10 \times 3 = 30$
 $11 \times 3 = 33$
 $12 \times 3 = 36$

÷ 3

$3 \div 3 = 1$
 $6 \div 3 = 2$
 $9 \div 3 = 3$
 $12 \div 3 = 4$
 $15 \div 3 = 5$
 $18 \div 3 = 6$
 $21 \div 3 = 7$
 $24 \div 3 = 8$
 $27 \div 3 = 9$
 $30 \div 3 = 10$
 $33 \div 3 = 11$
 $36 \div 3 = 12$

YEAR 6 Autumn Term 2 Times tables: 6s

X 6

$1 \times 6 = 6$
 $2 \times 6 = 12$
 $3 \times 6 = 18$
 $4 \times 6 = 24$
 $5 \times 6 = 30$
 $6 \times 6 = 36$
 $7 \times 6 = 42$
 $8 \times 6 = 48$
 $9 \times 6 = 54$
 $10 \times 6 = 60$
 $11 \times 6 = 66$
 $12 \times 6 = 72$

÷ 6

$6 \div 6 = 1$
 $12 \div 6 = 2$
 $18 \div 6 = 3$
 $24 \div 6 = 4$
 $30 \div 6 = 5$
 $36 \div 6 = 6$
 $42 \div 6 = 7$
 $48 \div 6 = 8$
 $54 \div 6 = 9$
 $60 \div 6 = 10$
 $66 \div 6 = 11$
 $72 \div 6 = 12$

YEAR 6 Spring Term 2 Times tables: 11s

X 11

$1 \times 11 = 11$
 $2 \times 11 = 22$
 $3 \times 11 = 33$
 $4 \times 11 = 44$
 $5 \times 11 = 55$
 $6 \times 11 = 66$
 $7 \times 11 = 77$
 $8 \times 11 = 88$
 $9 \times 11 = 99$
 $10 \times 11 = 110$
 $11 \times 11 = 121$
 $12 \times 11 = 132$

÷ 11

$11 \div 11 = 1$
 $22 \div 11 = 2$
 $33 \div 11 = 3$
 $44 \div 11 = 4$
 $55 \div 11 = 5$
 $66 \div 11 = 6$
 $77 \div 11 = 7$
 $88 \div 11 = 8$
 $99 \div 11 = 9$
 $110 \div 11 = 10$
 $121 \div 11 = 11$
 $132 \div 11 = 12$

YEAR 6 Spring Term 2 Times tables: 7s

X 7

$1 \times 7 = 7$
 $2 \times 7 = 14$
 $3 \times 7 = 21$
 $4 \times 7 = 28$
 $5 \times 7 = 35$
 $6 \times 7 = 42$
 $7 \times 7 = 49$
 $8 \times 7 = 56$
 $9 \times 7 = 63$
 $10 \times 7 = 70$
 $11 \times 7 = 77$
 $12 \times 7 = 84$

÷ 7

$7 \div 7 = 1$
 $14 \div 7 = 2$
 $21 \div 7 = 3$
 $28 \div 7 = 4$
 $35 \div 7 = 5$
 $42 \div 7 = 6$
 $49 \div 7 = 7$
 $56 \div 7 = 8$
 $63 \div 7 = 9$
 $70 \div 7 = 10$
 $77 \div 7 = 11$
 $84 \div 7 = 12$

YEAR 6 Spring Term 1 Times tables: 12s

X 12

$1 \times 12 = 12$
 $2 \times 12 = 24$
 $3 \times 12 = 36$
 $4 \times 12 = 48$
 $5 \times 12 = 60$
 $6 \times 12 = 72$
 $7 \times 12 = 84$
 $8 \times 12 = 96$
 $9 \times 12 = 108$
 $10 \times 12 = 120$
 $11 \times 12 = 132$
 $12 \times 12 = 144$

÷ 12

$12 \div 12 = 1$
 $24 \div 12 = 2$
 $36 \div 12 = 3$
 $48 \div 12 = 4$
 $60 \div 12 = 5$
 $72 \div 12 = 6$
 $84 \div 12 = 7$
 $96 \div 12 = 8$
 $108 \div 12 = 9$
 $120 \div 12 = 10$
 $132 \div 12 = 11$
 $144 \div 12 = 12$

YEAR 6 Spring Term 1 Times tables: 9s

X 9

$1 \times 9 = 9$
 $2 \times 9 = 18$
 $3 \times 9 = 27$
 $4 \times 9 = 36$
 $5 \times 9 = 45$
 $6 \times 9 = 54$
 $7 \times 9 = 63$
 $8 \times 9 = 72$
 $9 \times 9 = 81$
 $10 \times 9 = 90$
 $11 \times 9 = 99$
 $12 \times 9 = 108$

÷ 9

$9 \div 9 = 1$
 $18 \div 9 = 2$
 $27 \div 9 = 3$
 $36 \div 9 = 4$
 $45 \div 9 = 5$
 $54 \div 9 = 6$
 $63 \div 9 = 7$
 $72 \div 9 = 8$
 $81 \div 9 = 9$
 $90 \div 9 = 10$
 $99 \div 9 = 11$
 $108 \div 9 = 12$

How to support your child

Number Fact Focus

- Your children will be learning these number facts this year – it is broken into half terms
- Children need to learn the set of facts by rote for each half term
- They need to be able to rapidly recall the facts
- Please take the yearly overview sheet home with you and help your children learn them at home
- Please stick to the learning the facts for the given half term that you are in
- Please try to make it fun and creative – try not to just constantly test them!
- Once they have learnt all the facts for the year recap and revise them

Statutory Assessments

SATS Statutory Assessments

Test	Date
English grammar, punctuation and spelling test Paper 1: Short answer questions (45 minutes) Paper 2: Spelling (15 minutes)	Monday 11th May
English reading test Paper 1: Reading comprehension (60 minutes)	Tuesday 12th May
Mathematics Paper 1: Arithmetic (30 minutes) Paper 2: Reasoning (40 minutes)	Wednesday 13th May
Mathematics Paper 3: Reasoning (40 minutes)	Thursday 14th May



How to support your child

- Encourage your child to read daily
- Ensure your child has completed the weekly homework on time
- Use the knowledge organisers (will be distributed during Oct Parents Evenings)
- Work/life balance!

How to support your child

- Remind your child that practice is what helps us learn and develop- we always encourage the children to just try their best
- Be Positive – don't let your perception of education cloud their view of themselves (avoid phrases like 'I am bad at maths').
- Check the Lyndhurst Scoop for key information.
- Talk to your child about what they have been learning each day.



Important Notices

- **PE kits** (green t-shirt and sweatshirt and black shorts or tracksuit bottoms or leggings and appropriate sports shoes) should be worn to school on **Tuesdays**.
- **Swimming** will start on **Friday 12th Sept**—We may need adult volunteers so if you are available can you let the office team know so we can have you DBS registered.
- PE kits should be worn on all school trips.
- Water bottles (labelled) in school taken home and washed each day.
- Collecting your child – please be visible or let the office know if you'd like your child to walk home alone



Important Notices

Appropriate Dress

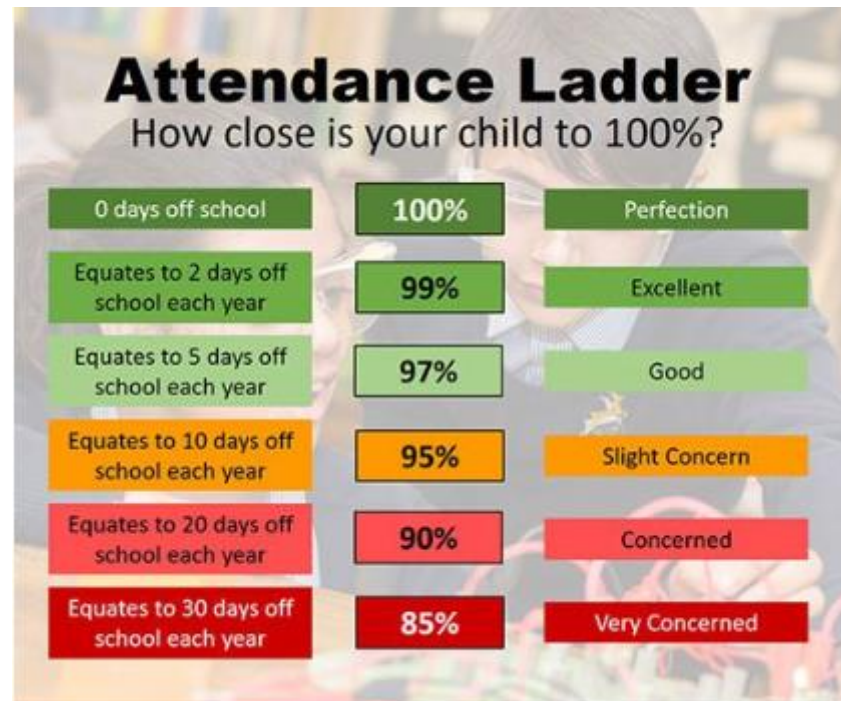
- Coats – for seasonal changes in British weather
- Clothes – labelled
- No nail varnish
- Stud earrings – **no** hoops
- Sensible and comfortable footwear – crocs can be worn but not to play on the muga
- Hair tied back – head lice



Attendance

The Positives – research shows:

- Children who have 95% attendance or above do better at school and better in later life
- Children who have 95% attendance or above are more confident, happier and find school more enjoyable
- Children who have 95% attendance or above find transition to secondary school easier



Attendance

Reminder about timings: **8:55 – line up**, if you arrive 9:00 – 9:14 you get a late mark.

If you arrive 9:15 onwards you get an unauthorised mark as registers have closed

New DfE attendance statutory guidance with **strict national fine thresholds** around **term time absence** – **10 unauthorised sessions = 5 days in 10 week period**

If you arrive after 9:15, that counts as unauthorised so that would count as a session.

If you really need to be absent you must fill out a request form and be prepared to provide evidence.

Please avoid making appointments during the school day as children miss key learning.

YEARBOOK

Parent help required! Please sign up!



MUSICAL

Parent help required! Please sign up!



Lion King

Madagascar

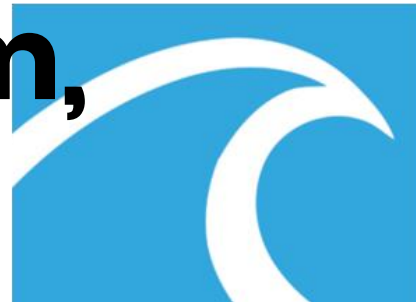


High School
Musical

Year 6 Residential 2026



**Purbeck Valley Farm,
Dorset**



LAND&WAVE
ADVENTURE | PEOPLE

BASIC DETAILS:

MONDAY 13TH JULY – FRIDAY 17TH JULY

Depart by coach on Monday at 7:30am

Return on Friday by 5 pm (hopefully)

Cost: £550 approx.

Fundraising will bring cost down

Experienced school staff attending

£60 Deposit to be paid by Wednesday 8th Oct
TO BE PAID ON PARENT PAY



ACCOMODATION

- Private camping field only used by Land & Wave
- groups
- Spacious bell tents- 6 children per tent (single gender)
- Camping mats are provided
- Teacher tents interspersed between the children's tents
- Large dining marquee
- Dedicated toilet and shower block
- Night Manager who sleeps on site
- Plenty of open space



PAYMENT:

**£60 Deposit to be paid by Wednesday 8th October
TO BE PAID ON PARENT PAY**

£60 each month thereafter

By May half term £420

Any extra payment will be refunded



FUNDRAISING!

WE NEED YOUR HELP!

Jewellery sale

Cake sales

Bingo

Sponsored run

Christmas carols

Grown ups social

Easter raffle

EID celebration



SECONDARY SCHOOL APPLICATION

Who is eligible to apply?

Everyone in Year 6 **MUST** apply by
Friday October 31st 2025
by 11:59 pm.

Start your applications as soon as possible!

SECONDARY SCHOOL APPLICATION

How do you apply?

Apply online at <https://services.southwark.gov.uk/schools-and-education/school-admissions/secondary-admissions/applying-for-a-secondary-school-place>

You will find the 'Starting Secondary School' brochure which includes a list of all the Southwark schools and information about the application process on Southwark's website:

SECONDARY SCHOOL APPLICATION

How do you apply?

- You can select up to **6** preferences.
- Always list the schools in your **order of preference**.
- You must complete a **SIF (supplementary information form)** if the school you have listed as one of your preferences requires this.
- If a school you are applying for uses banding, you must contact the school directly to register for the assessment
- **Children in care (LAC)** – please ensure you tick the relevant box on your application and submit confirmation that the child is ‘looked after’.

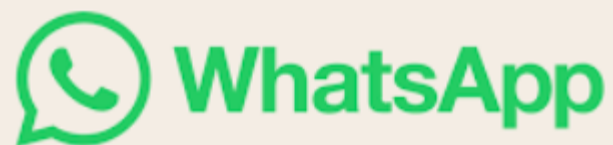
SECONDARY SCHOOL APPLICATION

Date	What should parents/carers look out for?
1 September 2025 to Friday 31 October 2025	<ul style="list-style-type: none"> ■ The admissions process starts. ■ Contact schools for a copy of their prospectus and details of their open days/evenings. We strongly advise families to check each school's website for details on how and when they will be holding their open day/evening as this may be subject to change at short notice. Please view page 8 for further information on school open days/evenings. ■ Apply for secondary schools by completing an online application at www.southwark.gov.uk/schooladmissions ■ If any of the schools you have listed as one of your preferences requires a supplementary information form (SIF), you must complete and return the SIF directly to the school. You should contact the school to check their individual closing date.
Friday 31 October 2025, 11.59pm	<ul style="list-style-type: none"> ■ Closing date for submitting online applications. ■ You must ensure that we have received your online application and you have uploaded any additional supporting documents with it by this date.
Monday 2 March 2026	<ul style="list-style-type: none"> ■ Applicants who apply on time will receive their child's offer of a school place by email after 5pm. This email will also include information on what to do next. ■ Applicants can also view the outcome of their application during the evening at www.eadmissions.org.uk
Monday 16 March 2026	<ul style="list-style-type: none"> ■ No action is required if you are a Southwark resident and want to accept the school place offered to your child. ■ Should you wish to reject the offer of a school place allocated to your child, you must notify the school admissions team by email at schools.admissions@southwark.gov.uk and include your unique application reference.
Appeals	<ul style="list-style-type: none"> ■ Check dates of appeal hearings with individual schools.

Staying Connected



**THE
SCOOP**

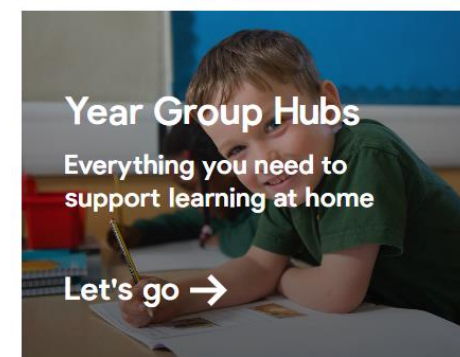


hsavvides@lyndhurst.southwark.sch.uk

ehobbs@lyndhurst.southwark.sch.uk



www.lyndhurstprimaryschool.com
Welcome to Lyndhurst Primary School



General Questions

- How can I know what's going on?
- Please check The Scoop and our website regularly.
- How can I contact the class teacher?
- Please send them a message via email.
- What if I'm worried about my child?
- In the first instance please contact the class teacher. It is possible that they will pass this on to their phase leader or a member of the leadership team who will follow up with you.



General Questions

- I'm not sure about which calculation methods or English terminology you use.
- How can I get some help?
- Our English subject leader is Ms Harwood & our Maths subject lead is Mr Peddle.
- Do contact them if you would like further information.



Assistant Head for Teaching and Learning
Maths Lead and Year Five Teacher



Assistant Head for Inclusion
SENCO and English Lead

General Questions

- My child has SEND and I don't know what support they will receive?
- Speak initially to your child's class teacher and to Ms Harwood (SENDCo) at one of our regular SEND coffee mornings if you need further information. Please see the Scoop.



SCHOOL INFORMATION REPORT

Here you can find all of the information you need about Special Educational Needs and Disabilities at Lyndhurst Primary School including identification and assessment, support available and monitoring and reporting of progress.

Special Educational Need Provision at Lyndhurst Primary School

OUR
Our
Our
Yea
Spe
Bey



School Website



Assistant Head for Inclusion
SENCO and English Lead

OUR VALUES

In Spring 2022, we came together as a school community to think about what qualities makes Lyndhurst children so special.

These qualities are shared below and are at the heart of everything we do.

We are...

ADVOCATES

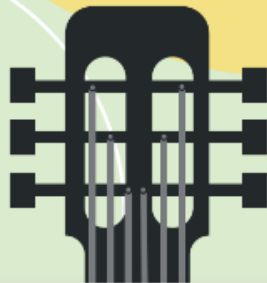
GLOBAL CITIZENS

RESILIENT

COURTEOUS

FREE THINKERS

WE ARE LYNDHURST



Lyndhurst
Primary
School

