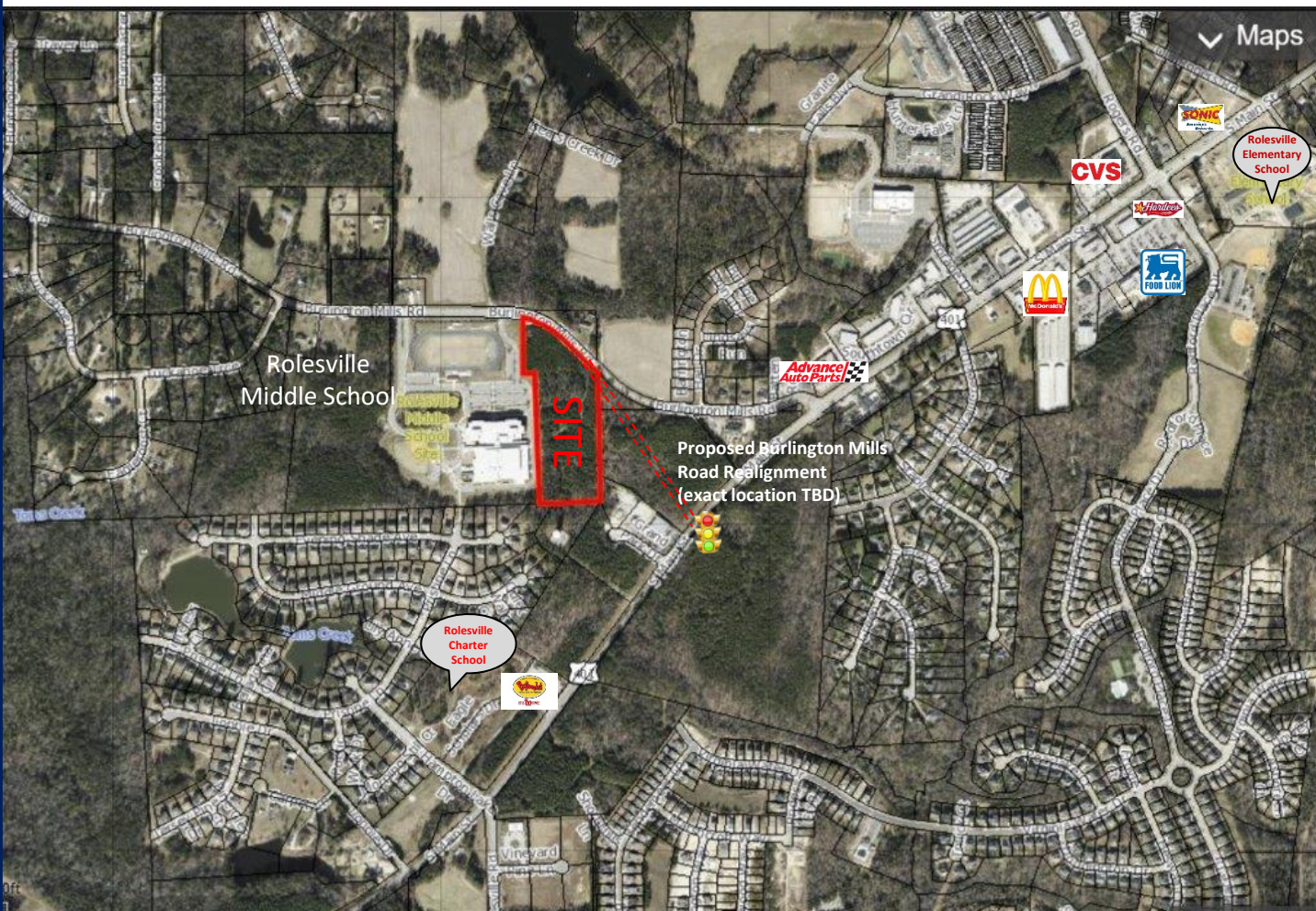


Land For Sale



- Just West of Hwy 401 Business
- Approximately 620' of Frontage on 10.22 Acres
- Currently zoned Commercial-Outlying (CO-CZ)
- Water and Sewer available
- Strong residential growth throughout Rolesville
- Town is applying for grants to realign Burlington Mills Road
- Call Listing Agent for details

For additional information contact:

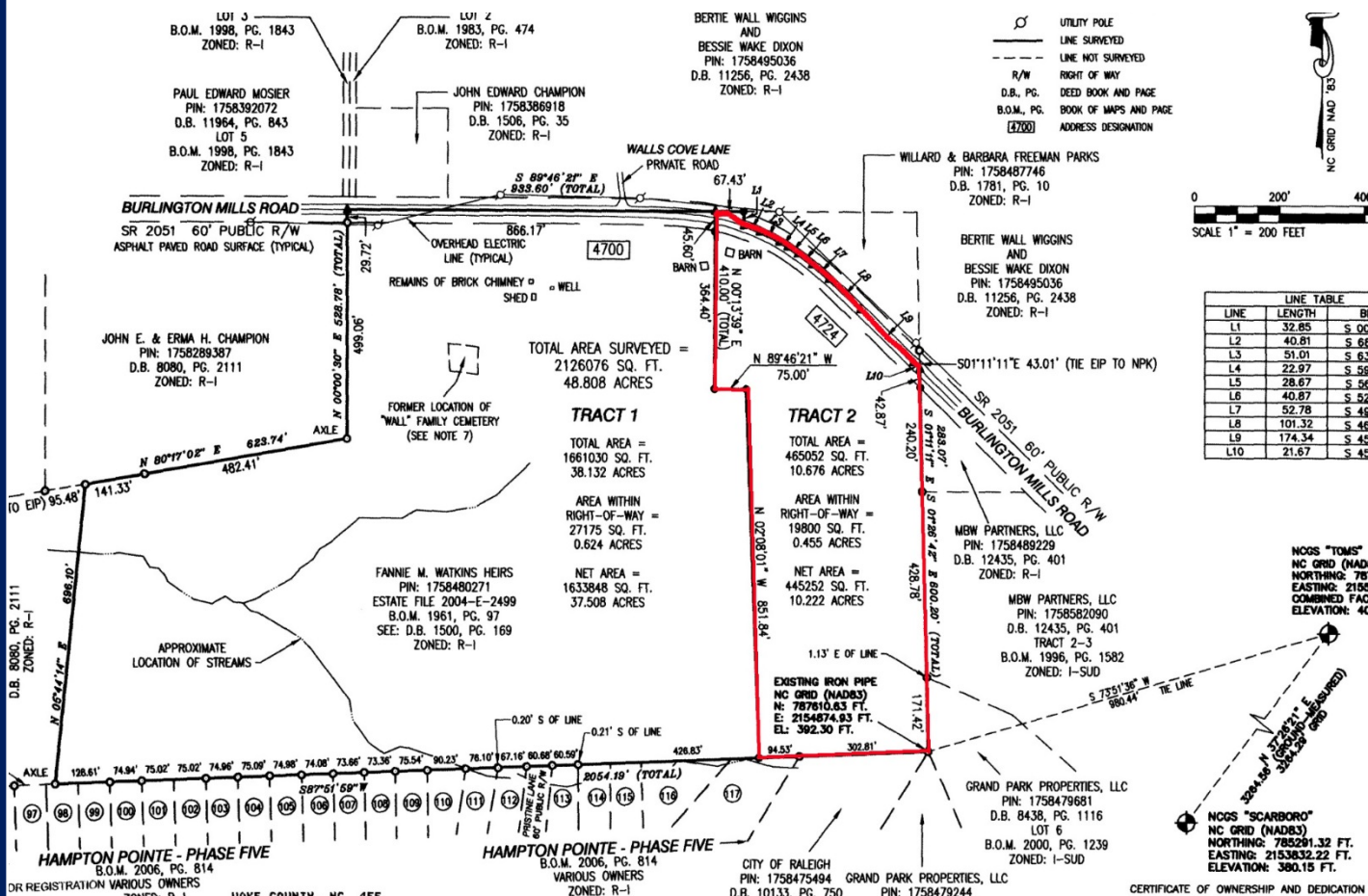
Phil Begany

Direct: 919-792-6933

Mobile: 919-302-7304

phil.begany@latpurser.com

Land For Sale



2021 Demographics	1 Mile	3 Miles	5 Miles
Population	3,192	21,409	68,356
Average HH Income	\$108,400	\$116,386	\$107,147
Daytime Population	1,082	3,413	15,977

For additional information contact:

Phil Begany

Direct: 919-792-6933

Mobile: 919-302-7304

phil.begany@latpurser.com