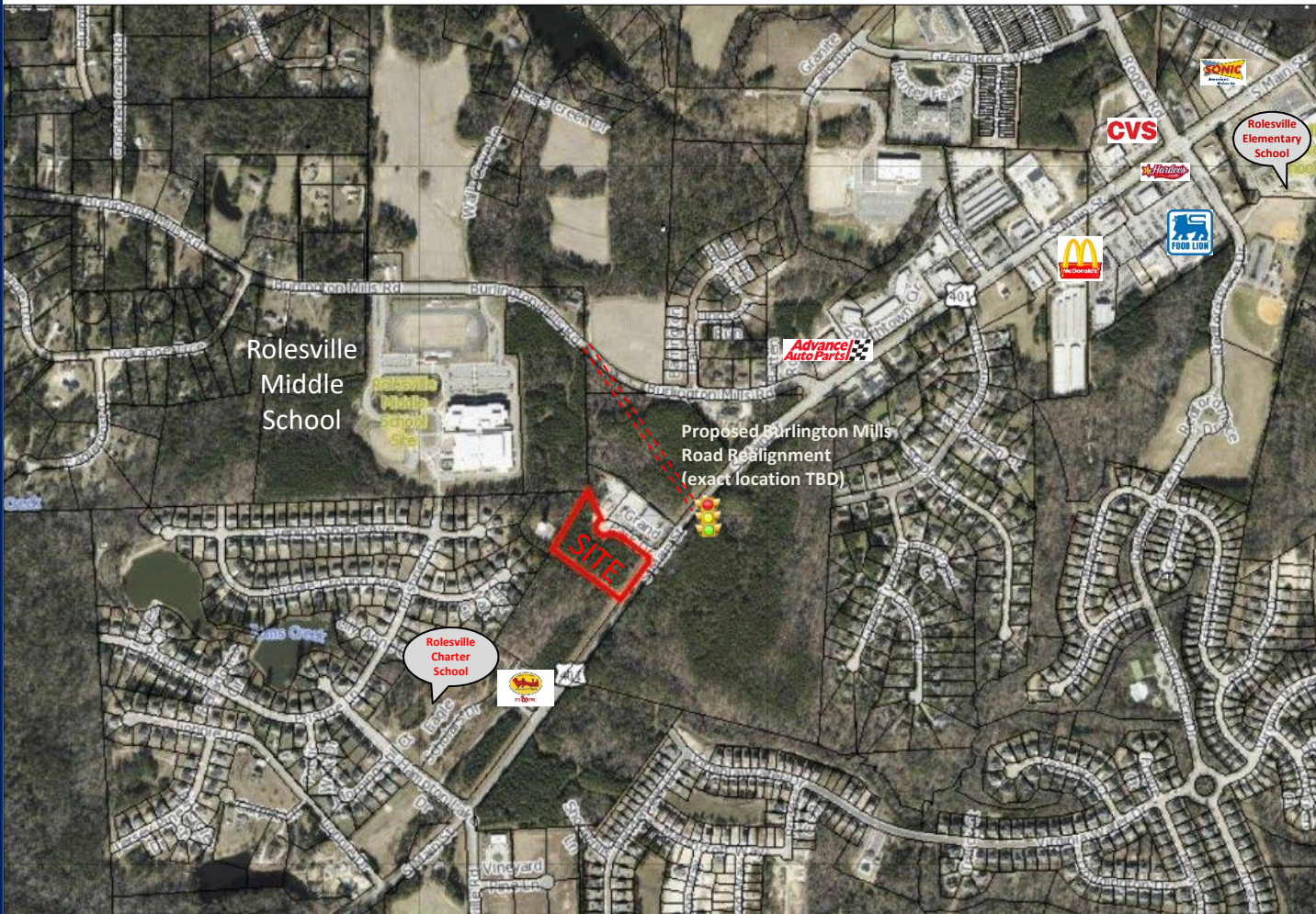


## Land For Sale or Lease



- Hwy 401 Business, just South of Burlington Mills Road
- Approximately 291' of Frontage on 3.87 Acres
- Traffic count on Hwy 401 is 14,000 cars per day
- I-SUD (Industrial- Special Use District) Zoning
- Water and Sewer available in R.O.W
- Strong residential growth throughout Rolesville
- Town is applying for grants to realign Burlington Mills Road
- Call Listing Agent for details

*For additional information contact:*

**Phil Begany**

Direct: 919-792-6933

Mobile: 919-302-7304

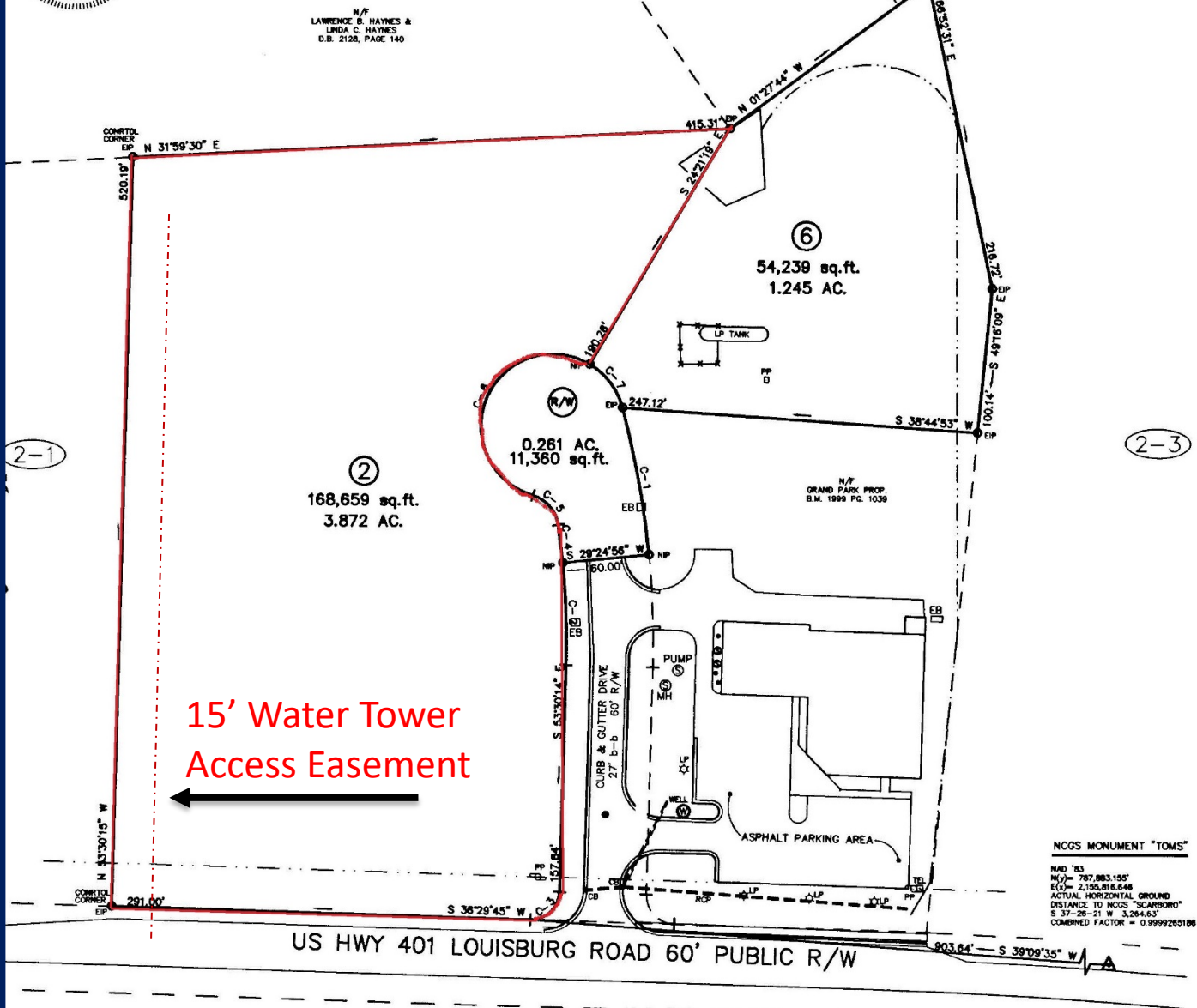
[phil.begany@latpurser.com](mailto:phil.begany@latpurser.com)



Wake County, NC: 448  
Laura M. Riddick, Register of Deeds  
Presented & Recorded 8/24/2006 14:28:00  
Book: 812000 Page: 81238

N/F  
G.R. WATKINS HEIRS  
D.B. 1500, PG. 169  
B.M. 1961, PAGE 97

N/F  
LAWRENCE B. HAYNES &  
LINDA C. HAYNES  
D.B. 2128, PAGE 140



2021 Demographics	1 Mile	3 Miles	5 Miles
Population	3,192	21,409	68,356
Average HH Income	\$108,400	\$116,386	\$107,147
Daytime Population	1,082	3,413	15,977

For additional information contact:

**Phil Begany**

Direct: 919-792-6933

Mobile: 919-302-7304

[phil.begany@latpurser.com](mailto:phil.begany@latpurser.com)