

# Amelia Plaza

1722 S 8<sup>TH</sup> STREET | FERNANDINA BEACH, FLORIDA 32024

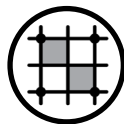
LUIS NAZARIO  
305 582 8270  
LUIS@SAGLO.COM



- Centrally located on Amelia Island, which has great access for tourists headed downtown or to the beach.
- Conveniently located between S. 8<sup>th</sup> Street and S. 14<sup>th</sup> Street at the intersection of T.J. Courson Road in Fernandina Beach.
- Shadow anchored by the only Walmart on Amelia Island which brings in over 40,000 visitors a month to the center.



PROPERTY AERIAL



**1,200 -  
24,495 SF  
AVAILABLE**



**\$144,537  
HOUSEHOLD  
INCOME**



**35,400  
VEHICLES  
PER DAY**



# Amelia Plaza

1722 S 8<sup>TH</sup> STREET | FERNANDINA BEACH, FLORIDA 32024



1702	Subway	1,200 SF
1708	Ascendance Yoga	800 SF
1714	Criket Wireless	1,000 SF
1722	Code Ninjas	1,000 SF
1726	Ascendance Pilates	1,800 SF
1737	AVAILABLE	1,200 SF
861	AVAILABLE	10,876 SF

947	Aldi	21,470 SF
947-B	AVAILABLE	24,495 SF
1013	New China Buffet	3,600 SF
1059	AVAILABLE	1,616 SF
1121	AVAILABLE	2,400 SF
1147	Kabuki	3,200 SF
150	Martial Arts Dojo	4,328 SF

1233	Nail Salon	4,072 SF
1255	Accounting	1,061 SF
1271	AVAILABLE	1,767 SF
1315	Kids Can Be Kids	2,480 SF
1333	Weight Loss	746 SF
1357	AVAILABLE	1,413 SF
1375	AVAILABLE	1,899 SF

AVAILABLE

NOT IN CENTER

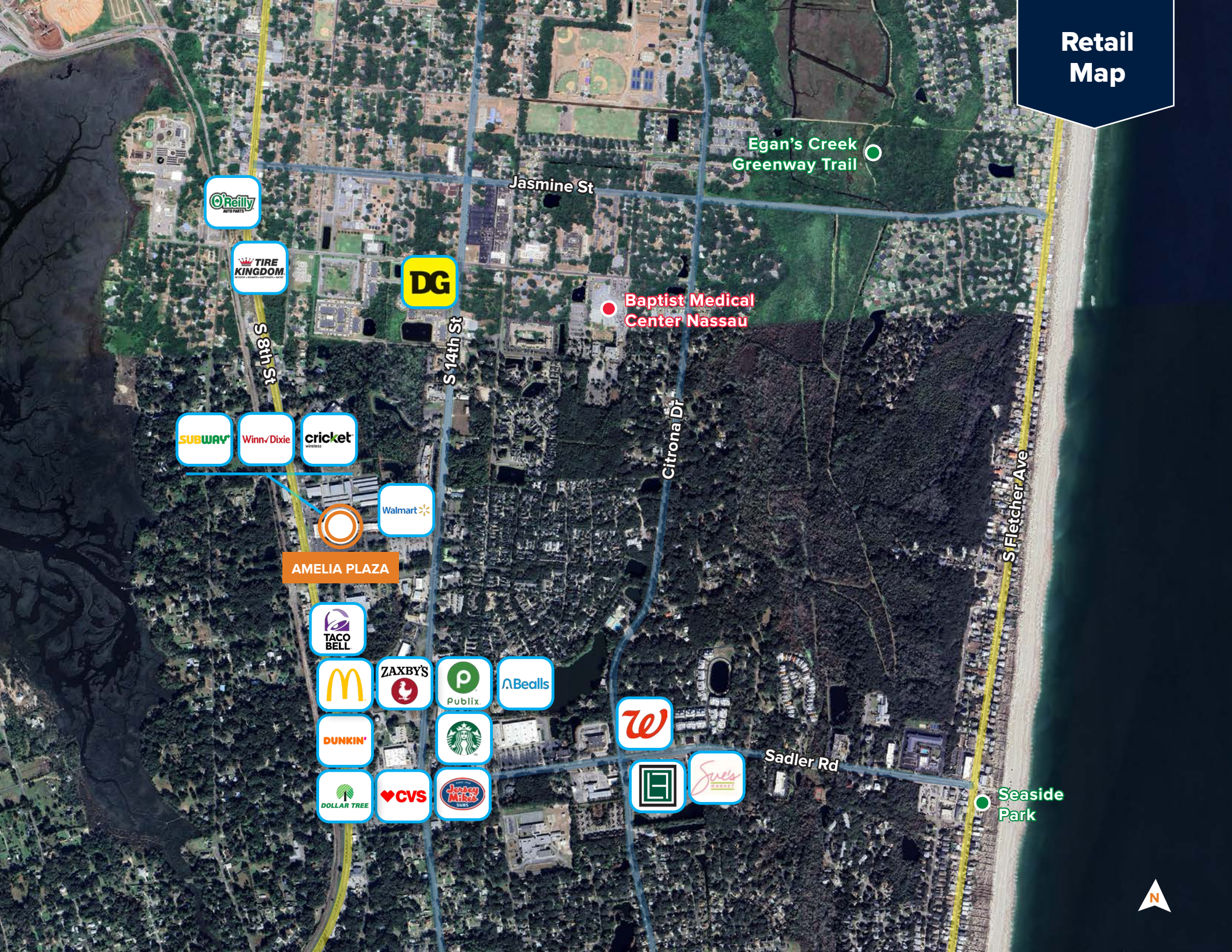
INGRESS + EGRESS

PYLON

TRAFFIC LIGHT



# Retail Map



Egan's Creek  
Greenway Trail

Jasmine St

O'Reilly  
AUTO PARTS

TIRE  
KINGDOM

DG

Baptist Medical  
Center Nassau

SUBWAY

Winn-Dixie

cricket

Walmart

AMELIA PLAZA

TACO  
BELL

MCDONALD'S

ZAXBY'S

PUBLIX

Bealls

DUNKIN'

STARBUCKS

DOLLAR TREE

CVS

Jersey Mike's

W

Jule's  
Bakery

Sadler Rd

Seaside  
Park

S Fletcher Ave

Citrona Dr

S 14th St

S 8th St

N



