

# LOS ANGELES BUSINESS ACTION TO END HIV

A HEALTH ACTION ALLIANCE INITIATIVE



## Los Angeles Community Partner Directory

Los Angeles Business Action to End HIV is a local chapter of the national U.S. Business Action to End HIV coalition, established in areas with high HIV incidence and a strong business presence. These chapters work to bridge the gap between businesses and public health communities, addressing local HIV challenges through coordinated efforts.

The Community Partner Directory is a resource for businesses to connect with community organizations working on the front lines of HIV in Los Angeles. It includes health departments, HIV service organizations, faith-based groups, and other community-based organizations. Each listing details how these organizations are willing to partner with businesses to make a meaningful impact and strengthen the local HIV response.

Community partner collaboration opportunities with local businesses include:



**Workshops and Training:** Conduct workshops for employees or employee resource groups on HIV prevention and care (available on-site or virtually).



**Educational Campaigns:** Partner on campaigns for employees or customers, creating content for print, radio, and social media to raise awareness about HIV testing, prevention, and treatment resources.



**HIV Testing:** Provide on-site HIV testing, counseling, and linkage to care, or invite employees to access testing services with incentives.



**Thought Leadership:** Offer guidance and community insights to businesses developing strategies to address gaps in HIV service delivery.



**Volunteer Opportunities:** Host local employees as volunteers at specific events throughout the year.



**Financial Support:** Benefit from donations, charity events, walkathons, or other fundraising efforts.



**Advocacy:** Collaborate to advance state and local HIV policy initiatives.



**AMAAD Institute**  
Arming Minorities Against Addiction & Disease

#### **ABOUT:**

AMAAD provides programs, services, events, and activities for LGBTQ+ communities, transgender/ gender non-conforming, communities of color, youth and young adults, women and girls, formerly incarcerated and system-impacted individuals, individuals experiencing or at risk of homelessness, substance use or abuse, HIV, mental or emotional health needs. Services include HIV prevention, education, and services, housing, reentry services, behavioral health, addiction and recovery support, youth services, training and education, and community engagement.

Visit [amaad.org](http://amaad.org) to learn more.

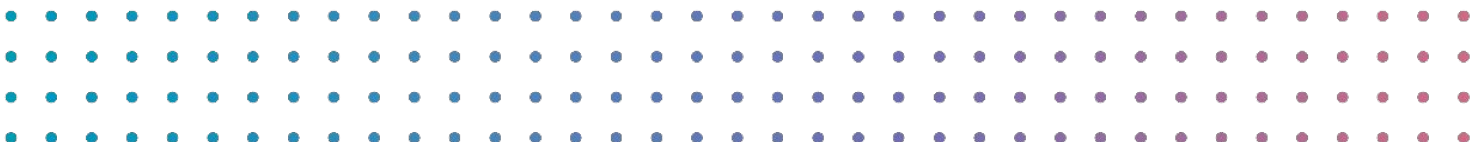
#### **OPPORTUNITIES FOR COLLABORATION:**

- Workshops and Training
- Educational Campaigns
- HIV Testing
- Thought Leadership
- Volunteer Opportunities
- Financial Support
- Advocacy

#### **PARTNERSHIP CONTACT:**

- Gerald Garth, Executive Director
- Email: [gerald@amaad.org](mailto:gerald@amaad.org)
- Office #: (323)-569-1610
- Address: 10221 S. Compton Ave. Ste. 105, Los Angeles, CA

**VISIT WEBSITE**





#### **ABOUT:**

APLA Health (formerly AIDS Project Los Angeles) restores dignity and trust within underserved communities by providing world-class LGBTQ+ empowering healthcare, HIV specialty care, food, housing, and other essential support services. We operate eight federally qualified health center locations in LA County, serving more than 19,000 people annually. APLA Health's annual fundraisers include AIDS Walk LA — the world's first and oldest AIDS Walk — and Best in Drag Show. We are leaders in advocating for policy and legislation at the local, state and Federal levels that positively impact the LGBTQ+ and HIV communities.

Visit [aplahealth.org](http://aplahealth.org) to learn more.

#### **OPPORTUNITIES FOR COLLABORATION:**

- Workshops and Training
- Educational Campaigns
- HIV Testing
- Thought Leadership
- Volunteer Opportunities
- Financial Support
- Advocacy

#### **PARTNERSHIP CONTACT:**

- Craig Bowers, Chief Marketing & External Affairs Officer
- Email: [cbowers@aplahealth.org](mailto:cbowers@aplahealth.org)
- Office #: (213)-201-1600
- Address: 611 S Kingsley Dr, Los Angeles, CA 90005

**VISIT WEBSITE**





### ABOUT:

Bienestar is a community-based social services organization serving Greater Los Angeles. Our focus is on identifying and addressing emerging health issues faced by Latinx and LGBTQ+ populations.

Bienestar's education and support programs encompass HIV/AIDS prevention, STI testing and treatment, mental health services, substance use, and harm reduction. All of our services are offered to the community for free.

Visit [bienestar.org](https://bienestar.org) to learn more.

### OPPORTUNITIES FOR COLLABORATION:

- Workshops and Training
- Educational Campaigns
- HIV Testing
- Thought Leadership
- Volunteer Opportunities
- Financial Support
- Advocacy

### PARTNERSHIP CONTACT:

- Robert Contreras, President & CEO
- Email: [rcontreras@bienestar.org](mailto:rcontreras@bienestar.org)
- Office #: (866)-590-6411
- Address: 5326 E. Beverly Blvd, Los Angeles, CA 90022

**VISIT WEBSITE**





**CHRISTIE'S PLACE**  
LOVE GROWS HERE

#### **ABOUT:**

Christie's Place is a nonprofit social service organization in San Diego County that provides HIV/AIDS education, support and advocacy. Our mission is to empower women, children, families and individuals whose lives have been impacted by HIV/AIDS to take charge of their health and wellness.

We are the only community-based organization in Southern California whose mission is dedicated to serving women, children and families living with HIV/AIDS. Although we are based in San Diego, we also provide training, education, and peer-based learning opportunities to women living with HIV in the Los Angeles region.

Visit [christiesplace.org](http://christiesplace.org) to learn more.

#### **OPPORTUNITIES FOR COLLABORATION:**

- Workshops and Training
- Educational Campaigns
- Thought Leadership
- Financial Support
- Advocacy

#### **PARTNERSHIP CONTACT:**

- Rhea Van Brocklin, Executive Director
- Email: [rvanbrocklin@christiesplace.org](mailto:rvanbrocklin@christiesplace.org)
- Office #: 619-702-4186
- Address: 2440 Third Ave, San Diego, CA, 92101

**VISIT WEBSITE**





**ABOUT:**

JWCH Institute is a private non-profit health agency that is working to improve the health status and well-being of under-served segments of the population of the LA Area through the direct provision or coordination of HIV services and drug treatment; health education; psychosocial assessment and intervention; primary medical care; family planning services; and research.

Visit [jwchinstitute.org](http://jwchinstitute.org) to learn more.

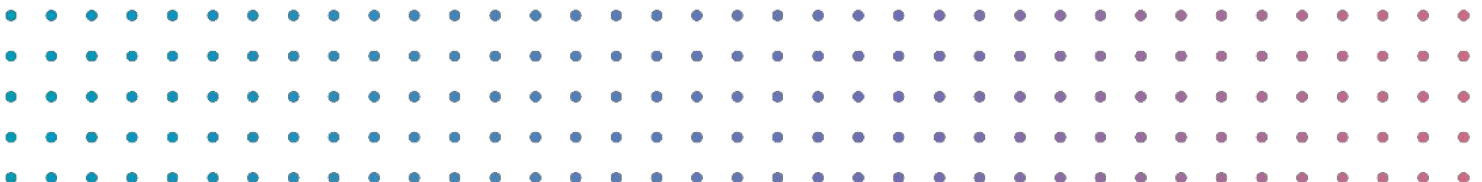
**OPPORTUNITIES FOR COLLABORATION:**

- Workshops and Training
- Educational Campaigns
- HIV Testing
- Thought Leadership
- Volunteer Opportunities
- Advocacy

**PARTNERSHIP CONTACT:**

- Al Ballasteros, CEO
- Email: [aballesteros@jwch.org](mailto:aballesteros@jwch.org)
- Office #: (323)-201-4516
- Address: 5650 Jillson Street, Commerce, CA 90040

**VISIT WEBSITE**





#### **ABOUT:**

The mission of The Laurel Foundation is to improve the well-being of transgender/gender-diverse youth, and children, youth, and families affected by HIV/AIDS, through year-round mental health, social support, educational and youth development programs. Our programs empower the youth in a safe and trusting environment where they can live authentically.

Visit [laurel-foundation.org](https://laurel-foundation.org) to learn more.

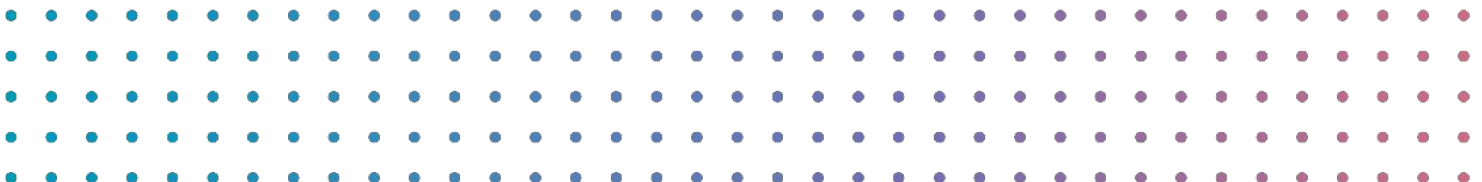
#### **OPPORTUNITIES FOR COLLABORATION:**

- Volunteer Opportunities
- Financial Support

#### **PARTNERSHIP CONTACT:**

- Margot Anderson, CEO/Founder
- Email: [manderson@laurel-foundation.org](mailto:manderson@laurel-foundation.org)
- Office #: (626)-683-0800
- Address: 75 S Grand Ave, Pasadena CA 91105

**VISIT WEBSITE**





**LOS  
ANGELES  
LGBT  
CENTER**

**ABOUT:**

The LA LGBT Center is a federally quality health center, offering a holistic model of care that houses, nourishes, heals, and celebrates LGBTQ+ people. We provide services for more queer and trans people than any other organization in the world—offering programs, services, and global advocacy that span four broad categories: Health, Social Services and Housing, Culture and Education, and Leadership and Advocacy.

Visit [lalgbtcenter.org](http://lalgbtcenter.org) to learn more.

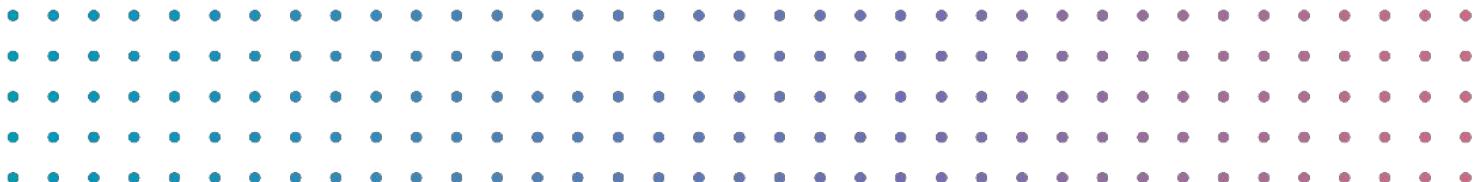
**OPPORTUNITIES FOR COLLABORATION:**

- Thought Leadership
- Volunteer Opportunities
- Financial Support

**PARTNERSHIP CONTACT:**

- Jeffrey Rodriguez, Director Community Health Services
- Email: [jerodriguez@lalgbtcenter.org](mailto:jerodriguez@lalgbtcenter.org)
- Office #: (323)-993-7535
- Address: 1125 N McCadden Pl, Los Angeles, CA 90038

**VISIT WEBSITE**





## MEN'S HEALTH FOUNDATION



### ABOUT:

Men's Health Foundation is a nonprofit healthcare provider, connecting men at risk to comprehensive healthcare and wellness through education, collaboration, and advocacy, inspiring and empowering all men to live longer, healthier and happier lives.

Visit [menshealthfound.org](https://menshealthfound.org) to learn more.

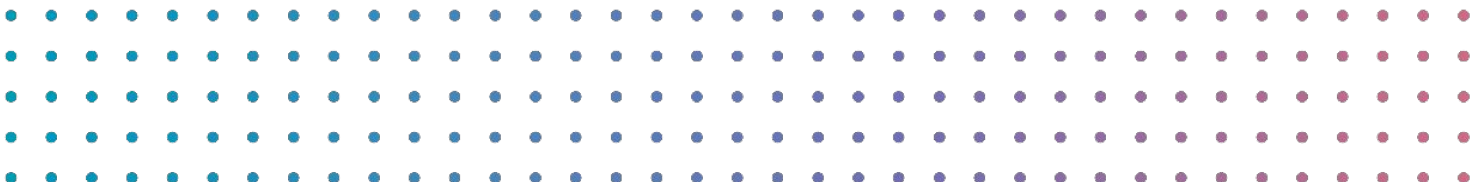
### OPPORTUNITIES FOR COLLABORATION:

- Workshops and Training
- Educational Campaigns
- HIV Testing
- Volunteer Opportunities

### PARTNERSHIP CONTACT:

- André Molette, Director of Public Programs
- Email: [aj.molette@menshealthfound.org](mailto:aj.molette@menshealthfound.org)
- Office #: (310)-550-1010
- Address: 9220 W Sunset Blvd, West Hollywood, CA 90069

**VISIT WEBSITE**





### ABOUT:

The National Gay Pilots Association (NGPA) is the largest organization of lesbian, gay, bisexual, and transgender aviation professionals and enthusiasts from around the world. Since 1990 our mission has been simple: to build, support, and unite the LGBTQ+ aviation community worldwide.

Visit [ngpa.org](http://ngpa.org) to learn more.

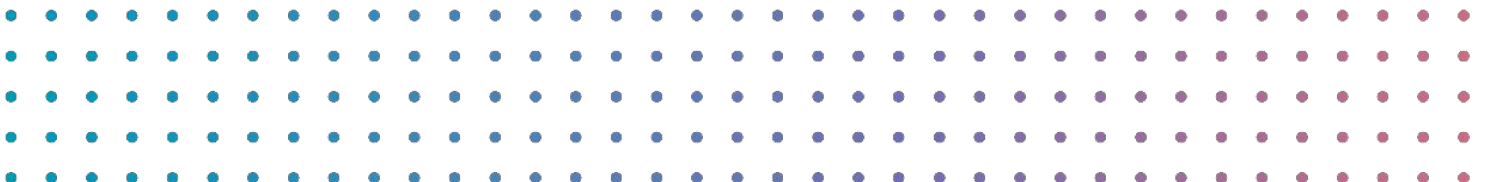
### OPPORTUNITIES FOR COLLABORATION:

- Workshops and Training
- Educational Campaigns
- HIV Testing
- Thought Leadership
- Volunteer Opportunities
- Advocacy
- Financial Support

### PARTNERSHIP CONTACT:

- Justin Ellixson-Andrews, Executive Director
- Email: [justin.ellixson@ngpa.org](mailto:justin.ellixson@ngpa.org)

**VISIT WEBSITE**





## THE PHOENIX

RISE | RECOVER | LIVE

### ABOUT:

The Phoenix is a national sober active community. We provide free volunteer led programs to connect those impacted by substance use in person and online.

Visit [the phoenix.org](https://the phoenix.org) to learn more.

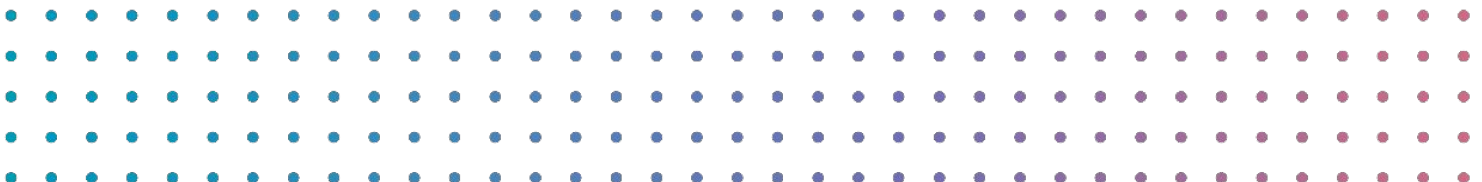
### OPPORTUNITIES FOR COLLABORATION:

- Workshops and Training
- Educational Campaigns
- Thought Leadership
- Volunteer Opportunities

### PARTNERSHIP CONTACT:

- Andrew Short, Senior Regional Manager
- Email: [ashort@the phoenix.org](mailto:ashort@the phoenix.org)
- Office #: 781-541-0510
- Address: 2233 Champa Street, Denver, CO 80205

**VISIT WEBSITE**





### ABOUT:

The TransLatin@ Coalition's (TLC) primary mission is to break down barriers to essential services and ensure that all Transgender, Gender Expansive, and Intersex (TGI) individuals can access the comprehensive resources they need to thrive. While continuing to advocate for systemic change, TLC also provides direct services to TGI individuals in Los Angeles. This includes our Center for Violence Prevention and Transgender Wellness in response to widespread structural, institutional, and interpersonal violence impacting the TGI community.

Visit [translatinacoalition.org](https://translatinacoalition.org) to learn more.

### OPPORTUNITIES FOR COLLABORATION:

- Workshops and Training
- Educational Campaigns
- HIV Testing
- Thought Leadership
- Volunteer Opportunities
- Financial Support
- Advocacy

### PARTNERSHIP CONTACT:

- Maria Roman-Taylorson, Vice President & Chief Operations Officer
- Email: [maria@translatinacoalition.org](mailto:maria@translatinacoalition.org)
- Office #: (323)-381-6103
- Address: 2975 Wilshire Blvd, Los Angeles, CA 90010

**VISIT WEBSITE**





### ABOUT:

Transcanwork is creating a culture where gender diverse people can thrive in the workplace. Our work includes resources and support for the professional development of transgender individuals, employer and workplace education and awareness, advocacy for equal employment opportunities, and the promotion of inclusive workplace policies.

Visit [transcanwork.org](https://transcanwork.org) to learn more.

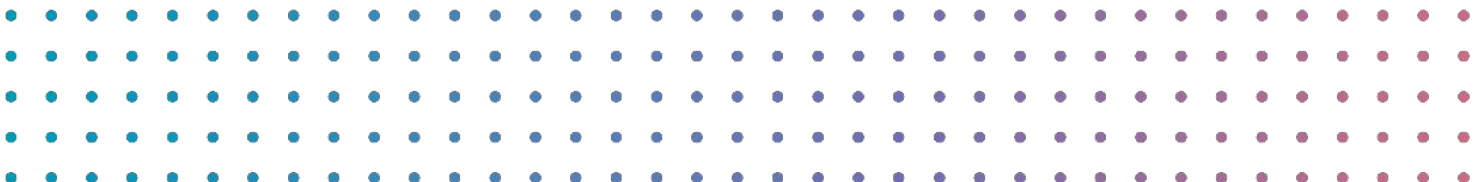
### OPPORTUNITIES FOR COLLABORATION:

- Workshops and Training
- Educational Campaigns
- Thought Leadership
- Financial Support
- Advocacy

### PARTNERSHIP CONTACT:

- Toni Newman, Chair of the Board
- Email: [toni@transcanwork.org](mailto:toni@transcanwork.org)
- Office #: (323)-633-6039
- Address: 1001 N Martel Ave, Los Angeles, CA 90046

**VISIT WEBSITE**



### ABOUT:

The Williams Institute is dedicated to conducting rigorous, independent research on sexual orientation and gender identity law and public policy. The Institute disseminates its research to policymakers, judges, the media, and other stakeholders to ensure that decisions impacting the lives of millions of LGBTQ people and families are based on data and facts.

Visit [williamsinstitute.law.ucla.edu](http://williamsinstitute.law.ucla.edu) to learn more.

### OPPORTUNITIES FOR COLLABORATION:

- Workshops and Training
- Educational Campaigns
- Thought Leadership
- Volunteer Opportunities
- Financial Support
- Advocacy

### PARTNERSHIP CONTACT:

- Maria Tsiao, Fundraising Coordinator
- Email: [tsiao@law.ucla.edu](mailto:tsiao@law.ucla.edu)
- Office #: 310-267-4382
- Address: 1060 Veteran Ave Suite 134 Los Angeles, CA 90095

**VISIT WEBSITE**

