

Rethink your MEL strategy. Without breaking the system.

The Regenerative Signal: A 6-Month Sandbox for Organizational Change



The MEL Dilemma

If you lead Monitoring, Evaluation, and Learning (MEL), you know the friction: real, systemic change happens at the speed of trust and relationships, yet conventional reporting demands linear logframes and short-term outputs.

Many organizations stay stuck in extractive reporting cycles because overhauling an entire MEL strategy feels too risky. *You need a safe space to experiment.*

The Solution: A Sandbox for Real Integration

Sustainable change doesn't happen through top-down mandates; it happens when you empower internal champions to test a new paradigm and slowly integrate it.

The Regenerative Signal is a 6-month learning journey designed for this exact purpose. Unfolding slowly—with monthly sessions and a spacious summer break—it gives your team the time to test regenerative frameworks directly on your actual, ongoing projects.

How the Regenerative Signal Works

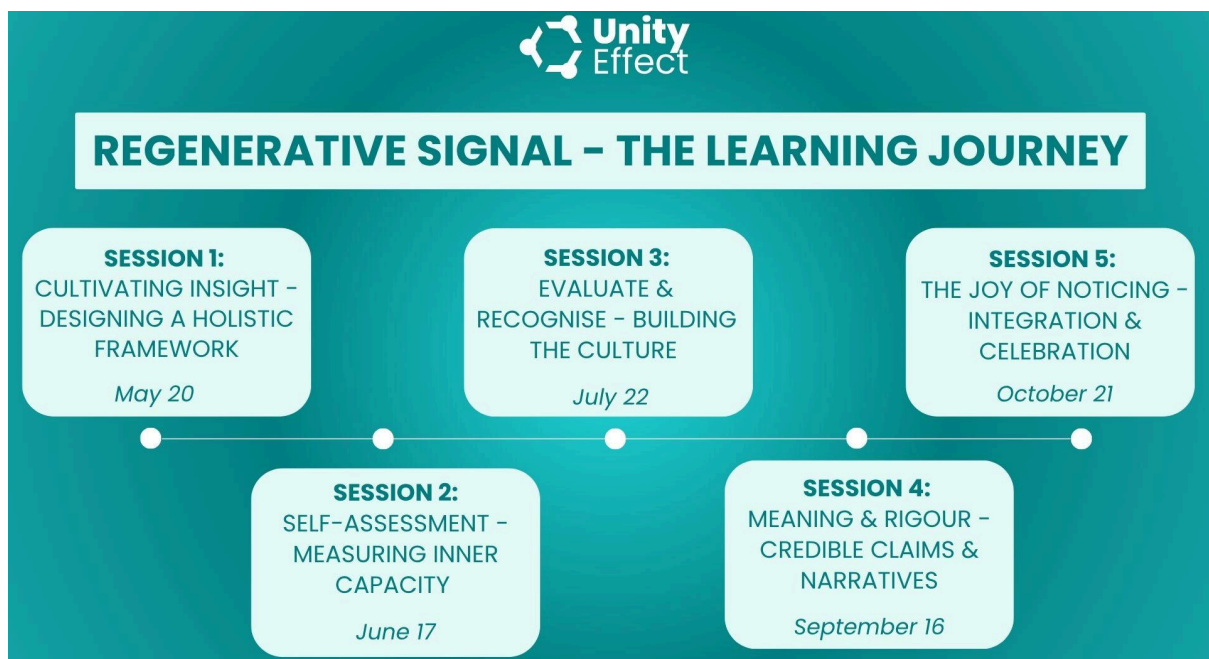
The program is designed not as a condensed training, but as a spacious, 6-month integration process. Participants bring their actual, ongoing projects into the program and use our core frameworks to build tailored, regenerative MEL infrastructure.

Program Details at a Glance

- **Format:** 5 Monthly Online Sessions (Zoom) + Self-paced application.
- **Dates:** May 20, June 17, July 22, September 16, October 21, 2026 (always Wednesdays, 3:00 pm - 4:30 pm CEST).
- **Cost:** Tiered pricing based on organizational capacity.
 - Corporate / Institutional: €1,550 / participant
 - Established Organizations: €950 / participant
 - Social Enterprises / NGOs: €450 / participant
- **Certification:** Official Certificate of Completion upon finishing the journey.
- **Resources:** Access to core frameworks (Impact Garden & Capacity Compass), Digital Workbook, Methodology Briefs, and Peer Community.

The Curriculum

Over the five sessions, your team will master three foundational frameworks to shift how you measure change.

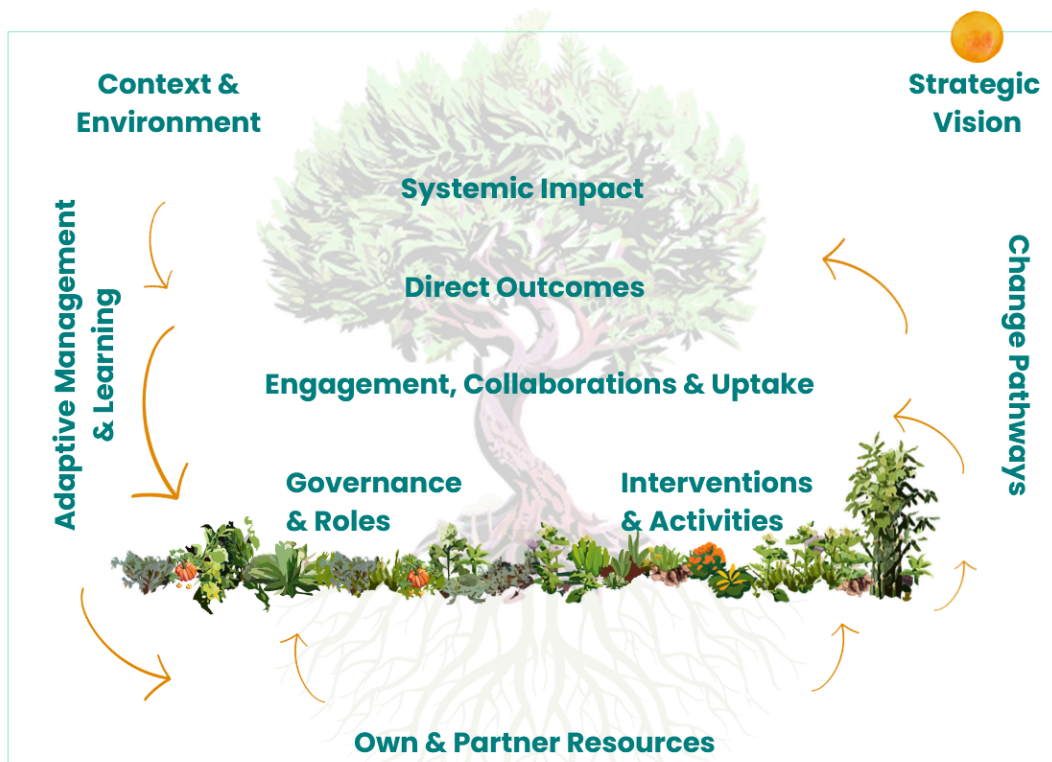


Core Frameworks

The Impact Garden

Traditional evaluation often relies on linear "A leads to B" models that miss the complex, human reality of your programs. We use the Impact Garden to move beyond static spreadsheets, upgrading traditional IOOI models into living systems maps. Your team will learn to make visible the underlying conditions that actually sustain change: the context, the resources, and the feedback loops. This framework provides a shared visual language to track emergent outcomes, helping you deeply understand your ecosystem rather than just proving your impact.

Explore the framework here: [Impact Garden](#).



The Capacity Compass

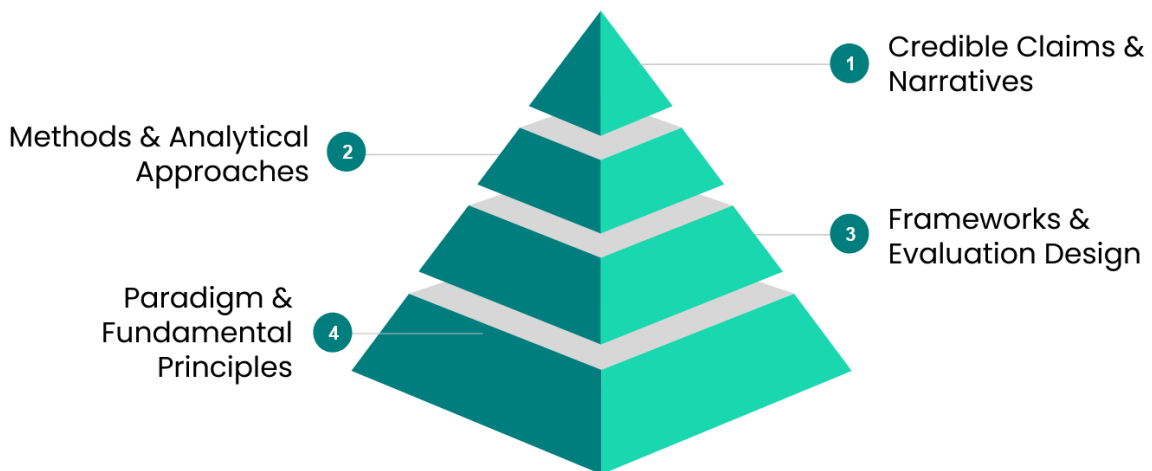
Real change happens at the speed of trust. Using the Capacity Compass, participants learn how to measure and evaluate shifts in capacities on individual and collective level. This allows your team to finally make the deep, often invisible human work—like shifting mindsets, navigating complexity, and building relationships—visible and valued.

Explore the framework: [Introducing the Capacity Compass](#) (blog article)

Credible Claims & Narratives in Complexity (Methodology)

Data only truly comes alive when we give it meaning. Yet, in the evaluation sector, we often face a **"coherence gap"**: we implement adaptive, deeply relational programs to solve systemic problems, but we try to validate them using linear, mechanical measurement tools.

The four dimensions of Credible Claims & Narratives



To satisfy the rigorous demands of boards and funders without erasing the messy, beautiful reality of systemic work, your team will become fluent in our 4-layer methodology:

- **Layer 1: Paradigm & Principles:** We introduce Regenerative Evaluation with its core principles and practices, enabling your team to confidently anchor their work in systemic health and learning..
- **Layer 2: Frameworks & Evaluation Design:** We provide tools such as the Impact Garden to map your ecosystem, ensuring you capture the context and relationships that actually enable impact.
- **Layer 3: Methods & Analytical Approaches:** Your team will learn to track underlying feedback loops and "vitality signals," while also applying qualitative methods in complex environments..
- **Layer 4: Credible Claims & Narratives:** Finally, we weave these diverse data points into two vital outputs: **(1) The Credible Claim:** the structured, verifiable evidence (the "what" and "how much"), and **(2) The Defensible Narrative:** the contextualized, cohesive story of systemic change (the crucial sense-making of "how" and "why").

Three Pathways for Institutional Integration

Professional development often fails due to the "lone wolf" problem: an individual learns a new framework, but returns to an organization that resists changing its established processes. To ensure true organizational ROI, we offer three strategic pathways for your team to participate:

1. The Supported Champion (Single Participant)

Perfect for tight budgets or highly passionate intrapreneurs. One individual joins the program, paired with an organizational commitment to establish an internal support structure (e.g., a dedicated working group or internal learning sessions) to help them share and implement their findings.

2. The Seed Cohort (Team of 3–5)

Perfect for organizations wanting a low-risk environment to test new frameworks. Send a small team at a reduced organizational rate. They develop a shared vocabulary and prototype new methods together, returning as a grounded coalition ready to champion systemic evaluation.

3. The Strategic Integration (Program + Consulting)

Perfect for organizations ready to actively shift official reporting structures. While your team attends the Signal program, Unity Effect consultants work directly with your leadership to audit current practices, align logframes, and embed these new models into your official institutional infrastructure.

Cost structure for the three different pathways

Pathway	Corporate / Institutional	Established Organisations	Non-profits
Supported Champion	1,550 €	950 €	450 €
Seed Cohort	1,240 € per participant (20% Discount)	760 € per participant (20% Discount)	396 € per participant (12% Discount)
Strategic Integration	Participation fee + day rates (1200 € / day)	Participation fee + day rates (1200 € / day)	Participation fee + day rates (1000 € / day)

Changing the Paradigm Starts with a Single Step

If you lead Monitoring, Evaluation, and Learning, you already know that the old tools are no longer sufficient for the complex, relational work your organization does. But shifting an entire institutional system overnight is a recipe for burnout and resistance.

The Regenerative Signal offers a different path: **a safe, spacious sandbox to test these frameworks on real projects, build internal capacity, and gather the evidence you need to shift your organization's MEL strategy** from the inside out. Measurement doesn't have to be a mechanism of control—it can be a practice of deep care, learning, and systemic health.

What to Expect When You Reach Out

We know that institutional change is deeply contextual. That is why our next step isn't a hard sales pitch; it is a sense-making conversation. When you book an exploratory call with us, we will:

- **Listen to your current MEL Challenges:** Where is the friction between your actual impact and your current reporting requirements?
- **Assess Readiness:** We will honestly evaluate if the Regenerative Signal is the right fit for your team at this specific moment in time.
- **Map the Right Pathway:** Together, we will figure out if the Supported Champion, Seed Cohort, or Strategic Integration model makes the most sense for your budget and goals.

Your next steps

Whether you are ready to register your team today or simply want a sounding board to figure out your next move, we are here to hold that space with you.

 [Book an exploratory conversation](#)

 Reach out to Jannik (the program host) at jannik@unityeffect.net

 [Connect on LinkedIn](#)

 [Read more and register for Regenerative Signal](#)

We'd love to hear from you!