

► **Always Know Where Your Equipment Is**

Easily locate any and all assets across your entire operation.

► **Set-and-Forget Asset Monitoring**

Simple wireless installation, long battery life, geo-fence alerts.

► **No Subscription Fees**

You pay one low price with no hidden costs.

► **JD Operations Center Integration**

Complete view of all your assets in one platform.

► **Quickly Recover Stolen Assets**

Easy, effective collaboration with law enforcement.

[stotzequipment.com/precision](http://stotzequipment.com/precision)



# RecovR<sup>®</sup>

Asset Management System

**Always Know Where  
Your Equipment Is**

# RecovR<sup>®</sup>

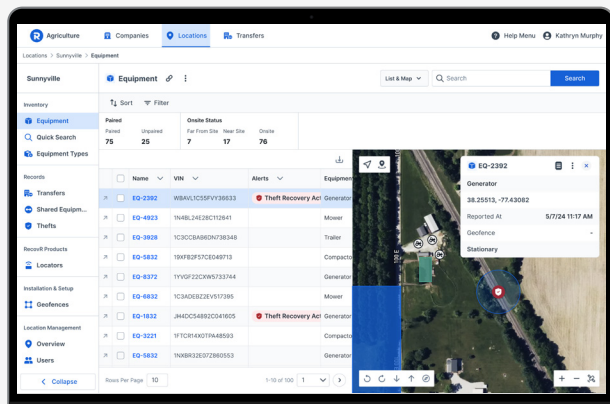




## 1 SIMPLE & POWERFUL FEATURES

### 24/7 visibility of your equipment

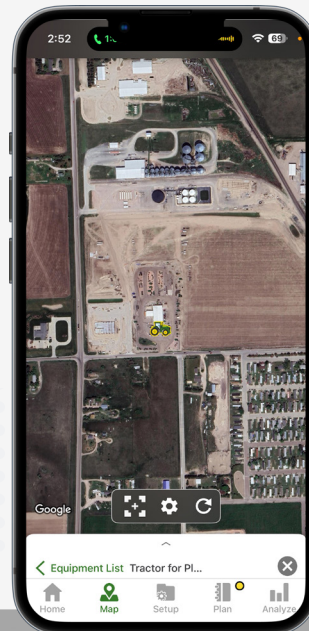
- ✓ Get a full list and map of all your equipment no matter where it is.
- ✓ Powerful search capabilities based on name, type, zone or VIN.
- ✓ Geofencing that gives you alerts if equipment leaves a location, and easy coordination with law enforcement for theft recovery.



## 2 NEW INTEGRATION!

### John Deere Operations Center

RecovR now integrates with John Deere Operations Center, bringing the real-time location of your RecovR-equipped assets directly into your JDOC mobile app. No matter the brand, see your entire fleet at a glance.



## 3 HIDE IT AND FORGET IT

### Simple & reliable

#### Simple

Installs with industrial magnets

#### Wireless

Doesn't drain your vehicle's battery

#### Long Life

Battery doesn't have to be recharged

#### Difficult to Detect

Can be painted to match your equipment

#### Private

Only you can see your equipment's location

## 4 DID YOU KNOW

### Theft is real

**\$1B**

The annual cost of equipment theft in the U.S. is estimated between \$300 million and \$1 billion.

**21%**

Only 21% of stolen heavy equipment is recovered.

**85%**

Approximately 85% of construction businesses in the U.S. experience some form of equipment theft.

*Source: National Insurance Crime Bureau (NICB) and National Equipment Register (NER).*