

RecovR

stotzequipment.com/precision

RecovR

Asset Management System

**Always Know Where
Your Equipment Is**

■ **Always Know Where Your Equipment Is**

Easily locate any and all assets across your entire operation.

■ **Set-and-Forget Asset Monitoring**

Simple wireless installation, long battery life, geo-fence alerts.

■ **No Subscription Fees**

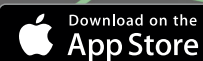
You pay one low price with no hidden costs.

■ **JD Operations Center Integration**

Complete view of all your assets in one platform.

■ **Quickly Recover Stolen Assets**

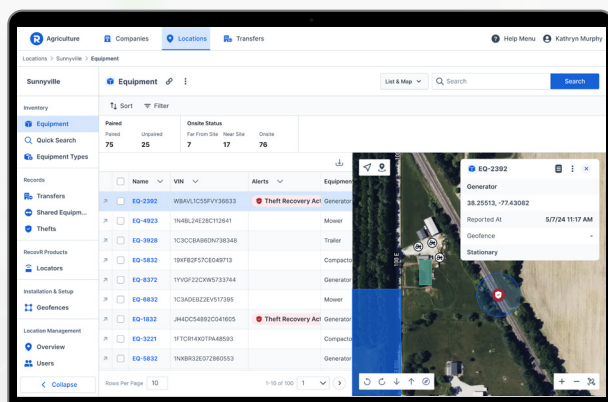
Easy, effective collaboration with law enforcement.



1 SIMPLE & POWERFUL FEATURES

24/7 visibility of your equipment

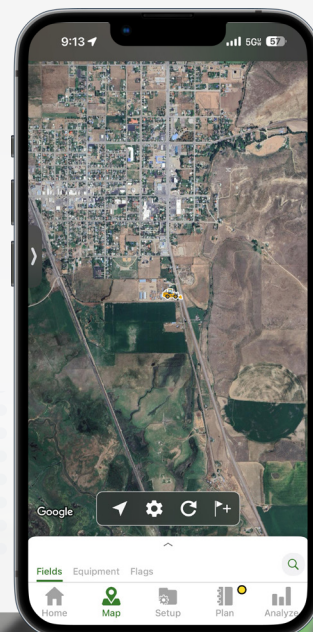
- ✓ Get a full list and map of all your equipment no matter where it is.
- ✓ Powerful search capabilities based on name, type, zone or VIN.
- ✓ Geofencing that gives you alerts if equipment leaves a location, and easy coordination with law enforcement for theft recovery.



2 NEW INTEGRATION!

John Deere Operations Center

RecovR now integrates with John Deere Operations Center, bringing the real-time location of your RecovR-equipped assets directly into your JDOC mobile app. No matter the brand, see your entire fleet at a glance.



3 HIDE IT AND FORGET IT

Simple & reliable

Simple
Installs with industrial magnets

Wireless
Doesn't drain your vehicle's battery

Long Life
Battery doesn't have to be recharged

Difficult to Detect
Can be painted to match your equipment

Private
Only you can see your equipment's location

4 DID YOU KNOW

Theft is real

\$1B The annual cost of equipment theft in the U.S. is estimated between \$300 million and \$1 billion.

21% Only 21% of stolen heavy equipment is recovered.

85% Approximately 85% of construction businesses in the U.S. experience some form of equipment theft.

Source: National Insurance Crime Bureau (NICB) and National Equipment Register (NER).

