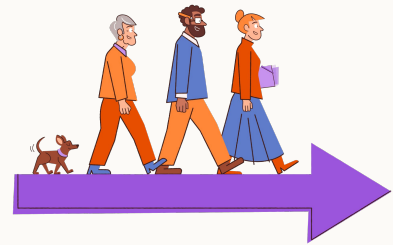


WORKSHOP AGENDA

# Teamwork

*A clear picture of where your team stands, and a plan for what's next.*



Full day · In person · Leadership and professional teams

A full-day workshop for teams who want to work together more effectively. Build an honest picture of where you are, understand each other better, assess your team across ten dimensions, and create a clear plan for improving collective performance.

— WHAT YOU LEAVE WITH

- An honest picture of how the team is performing across ten dimensions of team health.
- Stronger trust, communication and accountability, built through structured facilitated exercises.
- A concrete action plan and personal commitments that go beyond good intentions.

— WHO IT'S FOR

Leadership and professional teams who want to work together more effectively, and teams forming, growing, or resetting after a difficult period. The day rebuilds trust and closes with commitments people actually own.

— AT A GLANCE

<b>Team Check-In</b>	<i>A quick retrospective to bring us to the present day.</i>	90 MIN
<b>Great Teams</b>	<i>A shared standard.</i>	45 MIN
<b>User Manual</b>	<i>How each of you works.</i>	60 MIN
<b>Team Health Canvas</b>	<i>The diagnostic centrepiece.</i>	75 MIN
<b>Super You</b>	<i>What each person brings.</i>	45 MIN
<b>Team Action Plan</b>	<i>Turn it into commitments.</i>	30 MIN

## the session

---

**01**

### Team Check-In

90 MIN

*A quick retrospective to bring us to the present day.*

Three connected exercises build an honest picture of the team's current reality: how people are arriving, what the last period was really like, and what is coming.

---

**02**

### Great Teams

45 MIN

*A shared standard.*

An explainer and a working session on what the best teams actually do differently.

---

**03**

### User Manual

60 MIN

*How each of us works.*

Each person writes a short user manual: how they work best, what they need, and how to get the most from them.

---

**04**

### Team Health Canvas

75 MIN

*The diagnostic centrepiece.*

A structured assessment across ten dimensions of team health, giving the team a shared language and a clear set of priorities.

---

**05**

### Super You

45 MIN

*What each person brings.*

Appreciate the strengths each person brings, so you know who to call on and when.

---

**06**

### Team Action Plan

30 MIN

*Turn it into commitments.*

Create a small number of specific commitments people genuinely own.

---

*Let's talk.*

Bring the Teamwork workshop to your team

[james@creativehuddle.co.uk](mailto:james@creativehuddle.co.uk) [creativehuddle.co.uk](https://creativehuddle.co.uk)