

# ELITEFENCE SLAT KIT & ELITEFENCE GATE KIT

## ALUMINIUM SLAT KIT

- 1800mm (H) x 2400mm (W)

24 x 2400mm x 65mm slats

50 x 9mm spacer blocks

1 x Centre Support Rail

17 x Rail Fixings

2 x Caps

2 x Slat Clips
- 1200mm (H) x 1800mm (W)

16 x 1800mm x 65mm Slats

34 x 9mm Spacer Blocks

2 x Slat Clips

*Note: Fencing must not exceed 1800mm in height. Hinges & Latches are not supplied with the Gate Kit.*

## ALUMINIUM GATE KIT

- 1800mm (H) x 1000mm (W)

20 x 1000mm x 65mm slats

4 x 4 x 65mm Fluted Slats & 4 Screws Per Slat

2 x Gate Side Frames & Frame Caps

SEND US A PHOTO OF YOUR FINISHED PROJECT AND RECEIVE

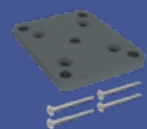
**\$50 FOOD & DRINK VOUCHER!\***

*\*Terms & conditions apply.*

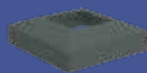


SCAN QR CODE FOR  
INSTALLATION GUIDE

## ELITE FENCE ACCESSORIES



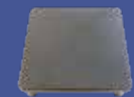
**BASE PLATE - 50MM & 65MM**  
Includes screws to fix the Base Plate to the Post.  
Required if you are fixing onto concrete/deck.  
Available in **Satin Black, Charcoal & White.**



**DOMICAL BASE PLATE COVER - 50MM & 65MM**  
Designed to hide Base Plates.  
Available in **Satin Black, Charcoal & White.**



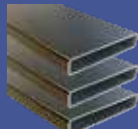
**DRESS RING - 50MM & 65MM**  
Designed for Post, in concrete applications.  
Available in **Satin Black, Charcoal & White.**



**POST TOP CAP - 50MM & 65MM**  
Required if you are cutting down the Posts.  
Available in **Satin Black, Charcoal & White.**



**SIDE FRAME SET (PAIR) - 1800MM**  
Required for fencing applications without Posts or with Square Posts..  
Available in **Satin Black, Charcoal & White.**  
*Note: 4 x End Caps, Fasteners & 50 x 9mm Spacer Blocks included.*



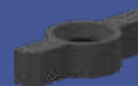
**THREE PACK SLATS**  
In either 1800mm or 2400mm lengths.  
Available in **Satin Black, Charcoal & White.**



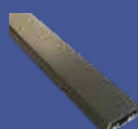
**SPACER BLOCKS - 9MM & 20MM**  
Slats can be easily adjusted with the 9mm Spacer Blocks included in the Slat Kit or 20mm Spacer Blocks sold separately.



**STARTER SPACER BLOCKS - 100MM**  
Can be cut to length for uneven surfaces raising the slat height and also to allow space for grass cutting and maintenance.  
5 per pack.



**SLAT CLIP - INCLUDES SCREWS**  
Required for every post to ensure slats stay in position. 10 per pack.  
*Note: 2 x Slat Clips are supplied in each Slat Kit.*



**CENTRE SUPPORT RAIL - 1800MM**  
Required with 2440mm (w) fencing applications.  
Available in **Satin Black, Charcoal & White.**  
*Note: 2 x Caps & Screws included.  
1 x Centre Support Rail is included in the 1800mm (h) x 2400mm (w) Slat Kit.*

FOR GATE INSTALLATION, SOURCE TRUCLOSE® HEAVY DUTY HINGES (TCHD1AS3) & LOKKLATCH® DELUXE SERIES 3 (LLD3) FROM D&D TECHNOLOGIES OR PRODUCTS OF EQUIVALENT SPECIFICATION.

# ELITEFENCE

## An Easy Modular Aluminium Fencing Kit



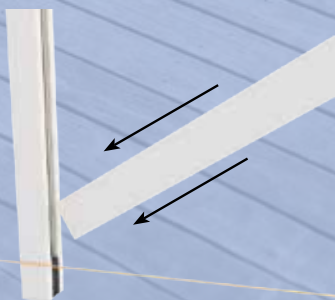
EXCLUSIVE TO:

**PlaceMakers®**

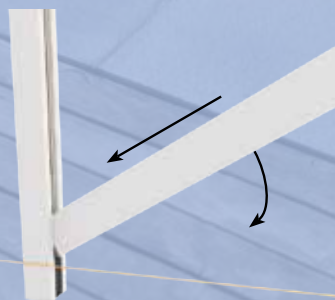
SUPPLIED BY:

**PSP** MATERIALS  
PRODUCTS  
SOLUTIONS

### NEW AND IMPROVED - PATENTED PUSH-TOGETHER SYSTEM



Push slat in at angle.



Push in and rotate slat down into position.





## ABOUT ELITEFENCE

An innovative modular aluminium fencing system featuring a patented push-together design for fast, hassle-free installation. With its unique friction-fit slat system, there's no need for individual slat fastenings (aside from the top slat retainer), resulting in a sleek, seamless appearance.

Designed for versatility, EliteFence allows you to create custom fence widths and heights with ease. The system includes 9mm standard Spacer Blocks for easy slat adjustment, and optional 20mm Spacer Blocks are also available (sold separately) for added flexibility. EliteFence can be easily fabricated on-site using standard aluminium cutting tools, making it ideal for a wide range of outdoor and landscaping projects.

Available in a selection of contemporary powder-coated colours, EliteFence delivers both style and durability – the perfect solution for your next fencing project.

## TYPICAL APPLICATIONS

- » Residential, commercial, landscaping, privacy perimeter/boundary fencing and screening applications



## FEATURES & BENEFITS

- » Fixing free slat friction fit system.
- » Lightweight.
- » DIY & easy to install system.
- » Flat pack in a box; easy to store, transport and handle.
- » Slat spacing can be adjusted with 9mm or 20mm Spacer Blocks.
- » Pre-finished - Low maintenance/powder coated finish.
- » Simple to adjust height & widths on site using conventional cutting tools.

## COLOUR RANGE

(Powder Coated)



Satin Black



Charcoal



White

## ELITEFENCE CONFIGURATIONS

### FENCE LAYOUT



CORNER



U-SHAPE



IN-LINE

### POST INSTALLATION

Ø76mm x 100mm deep  
RECOMMENDED



CORE DRILLED



BASE-PLATED

300mm x 300mm, 600mm deep  
MINIMUM RECOMMENDED



GROUND SET (WITH CONCRETE FILL)

## ELITEFENCE POSTS

50mm x 50mm Profile x 2400mm Lengths



CORNER POST



START/END POST



TWO WAY POST

We also offer Square Posts in 50mm x 50mm & 65mm x 65mm Profile x 1800mm & 2400mm Lengths.