



Note: The machine shown on this illustration is fitted with a T3 Engine installation

| | |
|---------------------------------|--|
| Engine | Cummins QSK23 |
| Rated Power | 567 kW (760 hp / 771 ps) @ 1,800 rpm |
| Maximum Dig Depth | 8,059 mm (26'5") |
| Standard Bucket Capacity | 9.0 m ³ (11.8 yd ³) |
| Operating Weight | 124,000 kg (273,373 lbs) |

9135F EXCAVATOR

TOUGH WORLD. TOUGH EQUIPMENT.

9135F SPECIFICATIONS >>>

ENGINE

| | |
|---------------------|--------------------------------------|
| Emission Regulation | Stage V |
| Manufacturer | Cummins |
| Model | QSK23 |
| Rated Power | 567 kW (760 hp / 771 ps) @ 1,800 rpm |
| Peak Torque | 3,468 N·m (2,558 lbf·ft) @ 1,800 rpm |
| Number of Cylinders | 6 |
| Displacement | 23 L (6 gal) |

UNDERCARRIAGE

| | |
|-----------------------------------|----|
| Number of Shoes per Side | 50 |
| Number of Upper Rollers per Side | 3 |
| Number of Bottom Rollers per Side | 8 |

SWING SYSTEM

| | |
|-------------|-----------|
| Swing Speed | 6.2 r/min |
|-------------|-----------|

TRACK DRIVE

| | |
|----------------------|------------------------|
| Maximum Travel Speed | 3.5 km/h (2.2 mph) |
| Drawbar Pull | 796.4 kN (179,038 lbf) |

HYDRAULIC SYSTEM

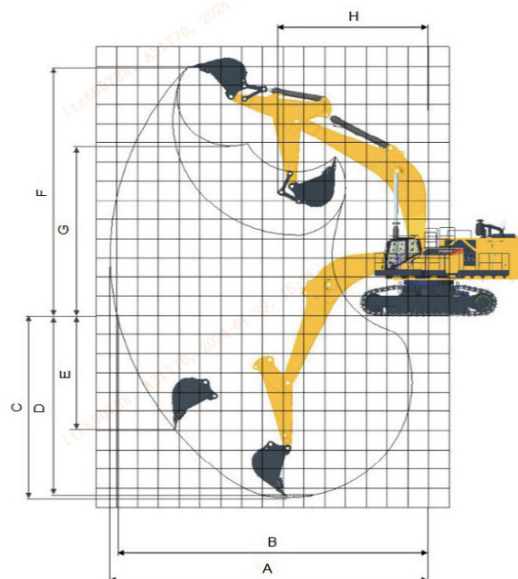
| | |
|-----------------------|---------------------------|
| Main Pumps Total Flow | 2,040 L/min (539 gal/min) |
| Relief Pressure, main | 37 MPa (5,366 psi) |

DIMENSION

| | |
|------------------------------------|-------------------|
| A Shipping Length | 14,872 mm (48'9") |
| B Shipping Height – Top of Boom | 5,962 mm (19'7") |
| C Track Gauge | 3,900 mm (12'10") |
| D Undercarriage Width | 4,600 mm (15'1") |
| E Length to Center of Rollers | 5,220 mm (17'2") |
| F Track Length | 6,624 mm (21'9") |
| G Overall Width of Upper Structure | 5,743 mm (18'10") |
| H Tail Swing Radius | 4,780 mm (15'8") |
| I Counterweight Ground Clearance | 1,325 mm (4'4") |
| J Overall Height of Cab | 4,253 mm (13'11") |
| K Min. Ground Clearance | 1,084 mm (3'7") |
| L Track Shoe Width | 700 mm (2'4") |

BUCKET PERFORMANCE

| | |
|--|--|
| Std. Bucket Heaped Capacity (Referenced) | 9.0 m ³ (11.8 yd ³) |
|--|--|



BOOM & ARM

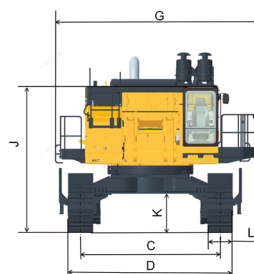
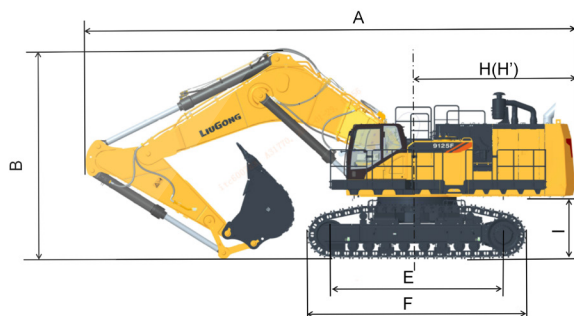
| | |
|-------------|------------------|
| Boom Length | 7,550 mm (24'9") |
| Arm Length | 3,200 mm (10'6") |

WORKING RANGE

| | |
|-------------------------------------|----------------------|
| A. Max. Digging Reach | 13,876 mm (45'6") |
| B. Max. Digging Reach on Ground | 13,505 mm (44'4") |
| C. Max. Digging Depth | 8,059 mm (26'5") |
| D. Max. Digging Depth (2.44m) Level | 7,897 mm (25'11") |
| E. Max. Vertical Wall Digging Depth | 6,634 mm (21'9") |
| F. Max. Cutting Height | 12,508 mm (41') |
| G. Max. Dumping Height | 7,775 mm (25'6") |
| H. Min. Front Swing Radius | 6,628 mm (21'9") |
| Bucket Digging Force (ISO) | 648 kN (145,676 lbf) |
| Arm Digging Force (ISO) | 550 kN (123,644 lbf) |

SERVICE CAPACITIES

| | |
|------------------------|---------------------|
| Fuel Tank | 1,520 L (401.5 gal) |
| Engine Oil | 70 L (18.5 gal) |
| Cooling System | 106.6 L (28.2 gal) |
| Hydraulic Reservoir | 750 L (198 gal) |
| Hydraulic System Total | 1,150 L (304 gal) |



Guangxi Liugong Machinery Co., Ltd.

No. 1 Liutai Road, Liuzhou, Guangxi 545007, PR China
T: +86 772 3886124 E: overseas@liugong.com
www.liugong.com

01/2025 Designed by LiuGongReplace the previous versions of 02/2024

Specifications and designs are subject to change without notice. Machines shown may include optional equipment. LiuGong standard and optional equipment may vary from region to region. Please consult your LiuGong dealer for information specific to your area. Engine power kW is converted to metric hp in this file (1 kW=1.34 hp).



Guangxi LiuGong Machinery Co., Ltd.

No. 1 Liutai Road, Liuzhou, Guangxi 545007, PR China
T: +86 772 388 6124 E: overseas@liugong.com
www.liugong.com

Like and follow us:



LG-9135F-Stage V-WW-A4-022024-ENG

The LiuGong series of logos herein, including but not limited to word marks, device marks, letter of alphabet marks and combination marks, as the registered trademarks of Guangxi LiuGong Group Co., Ltd. are used by Guangxi LiuGong Machinery Co., Ltd. with legal permission, and shall not be used without permission. Specifications and designs are subject to change without notice. Illustrations and pictures may include optional equipment and may not include all standard equipment. Equipment and options varies by regional availability.