



Engine	Cummins L9PLUST3-240A1
Rated Power	240 kW (322 hp / 326 ps) @ 2,100 rpm
Blade Width	4,572 mm
Maximum Speed	38 km/h
Draw Bar Pull	170 kN
Operating Weight	31,300 kg

4320D MOTOR GRADER

TOUGH WORLD. TOUGH EQUIPMENT.

4320D SPECIFICATIONS >>>

ENGINE	
Emission Regulation	Tier 3 / Stage III
Manufacturer	Cummins
Model	L9PLUST3-240A1
Rated Power	240 kW (322 hp / 326 ps) @ 2,100 rpm
Maximum Torque	1,520 N·m @ 1,100 -1,400 rpm
Number of Cylinders	6
Aspiration	Turbo & air-to-air intercooled

TRANSMISSION	
Transmission Type	Hydrostatic transmission gearbox
Maximum Travel Speed, fwd	38 km/h
Maximum Travel Speed, rev	38 km/h
Number of Speeds, fwd	2
Number of Speeds, rev	2

AXLES	
Differential Type	Limited slip standard
Final Drive Type	Chain drive
Axle Oscillation	16°
Front Axle, Wheel Lean Angle	Left / right 18°

STEERING	
Steering Configuration	Load sensor steering gear
Steering Relief Pressure	17.5 MPa
Minimum Turning Radius	9,000 mm
Steering Angle	± 48°
Frame Articulation Angle	± 23°

BRAKES	
Service Brake Type	Dual circuit Wet brake
Service Brake Location	Rear axle

TIRES	
Tire Size	20.5-25

HYDRAULIC SYSTEM	
Main Pump Type	Gear
Main Relief Pressure	24 MPa
Main Pump Flow	280 L/min

WORKING CAPACITIES	
Maximum Draw Pull	170 kN
Cutting Pressure	14,000 kg

TANDEM DRIVE PERFORMANCE	
Height	855 mm
Width	2,558 mm
Center Distance	1,898 mm

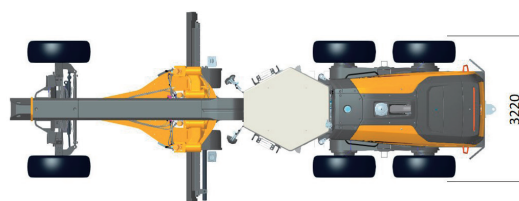
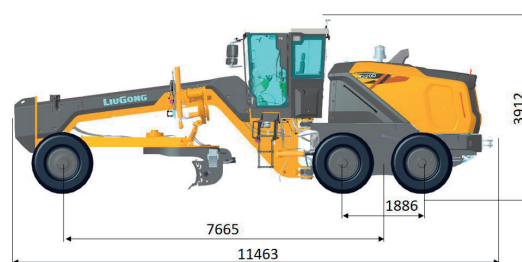
MOLDBOARD PERFORMANCE	
Bank Cut Angle	46~93°
Moldboard Lift Above Ground	470 mm
Moldboard Side Shift, left/right	824 / 778 mm
Maximum Sloping Angle	65°
Cutting Depth	700 mm
Circle Rotation	360°
Circle Diameter	1,820 mm
Circle Thickness	165 mm

DIMENSIONS	
Wheelbase	7,665 mm
Overall Length	11,463 mm
Overall Width	3,220 mm
Overall Height with Cab	3,912 mm
Clearance under Front Axle	540 mm
Moldboard Standard Length	4,572 mm
Moldboard Standard Thickness	30 mm
Moldboard Standard Height	686 mm

OPERATING WEIGHTS	
Operating Weight	31,300 kg

SERVICE CAPACITIES	
Fuel Tank	568 L
Engine Oil	28 L
Cooling System	45 L
Hydraulic System	200 L
Transmission and Torque Converter	7.5 L
Tandems, each	80 L

OPTIONAL EQUIPMENT	
Ripper	
Automatic Leveling System	
Front Dozer	



Guangxi Liugong Machinery Co., Ltd.

No. 1 Liutai Road, Liuzhou, Guangxi 545007, PR China
 T: +86 772 3886124 E: overseas@liugong.com
 www.liugong.com

Specifications and designs are subject to change without notice. Machines shown may include optional equipment. Liugong standard and optional equipment may vary from region to region. Please consult your Liugong dealer for information specific to your area. Engine power kW is converted to horsepower (1 kW=1.3596 ps and 1 kW=1.3410 hp) in this file.

11/2024 Designed by LiuGong
 Replaced the previous versions of 10/2024