



<b>Engine</b>	Cummins QSM15
<b>Rated Power</b>	563 kW (755 hp / 766 ps) @ 2,100 rpm
<b>Maximum Dig Depth</b>	7,677 mm
<b>Standard Bucket Capacity</b>	4.1 m <sup>3</sup>
<b>Operating Weight</b>	66,000 kg

# 965F EXCAVATOR

# 965F SPECIFICATIONS >>>

## PERFORMANCE PARAMETERS

Operating Weight	66,000 kg
Standard Bucket Capacity	4.1 m <sup>3</sup>
Max. Travel Speed	High: 4.9 km/h (3 mph) Low: 3.1 km/h (1.9 mph)
Swing Speed	7.5 r/min
Drawbar Pull	500 kN
Bucket Digging Force (ISO)	360 kN
Arm Digging Force (ISO)	310 kN

## ENGINE

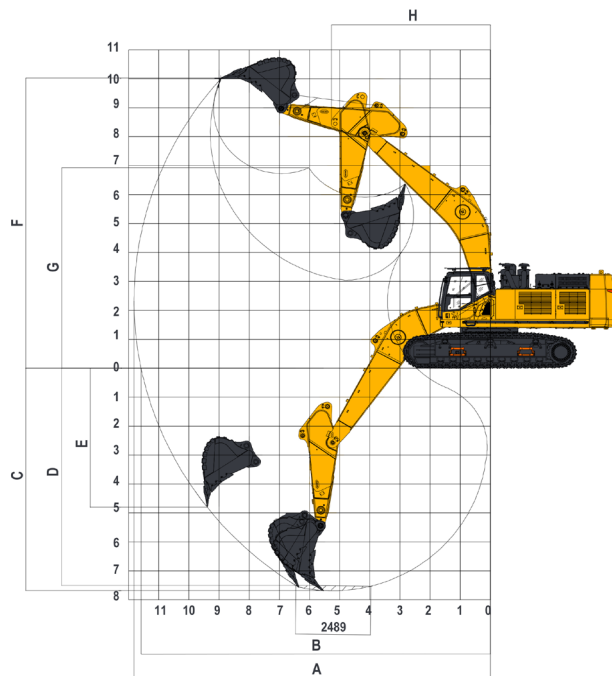
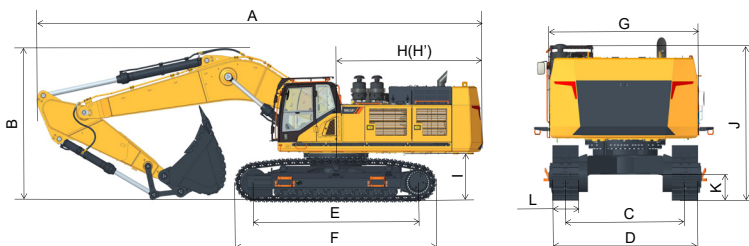
Emission	Stage III
Manufacturer	Cummins
Model	QSM15
Rated Power	563 kW (755 hp / 766 ps) @ 2,100 rpm
Peak Torque	3,000 N·m @ 1,400 rpm
Number of Cylinders	6
Displacement	14.5 L

## UNDERCARRIAGE

Shoe Width	600 mm
Number of Shoes per Side	53
Number of Upper Rollers per Side	3
Number of Bottom Rollers per Side	9

## DIMENSION

A. Transport Length	12,752 mm
B. Transport Height	4,305 mm
C. Track Gauge	2,890 mm
D. Transport Width	3,490 mm
E. Length to Center of Rollers	4,692 mm
F. Track Length	5,766 mm
G. Overall Width of Upper Structure	3,700 mm
H. Tail Swing Radius	4,200 mm
I. Counterweight Ground Clearance	1,365 mm
J. Overall Height of Cab	3,480 mm
K. Min. Ground Clearance	596 mm
L. Track Shoe Width	600 mm



## WORKING RANGE

Boom Length	7,060 mm
Arm Length	2,900 mm
A. Max. Digging Reach	11,823 mm
B. Max. Digging Reach on Ground	11,589 mm
C. Max. Digging Depth	7,677 mm
D. Max. Digging Depth, 2.44 m (8') Level	7,504 mm
E. Max. Vertical Wall Digging Depth	4,800 mm
F. Max. Cutting Height	10,035 mm
G. Max. Dumping Height	6,950 mm
H. Min. Front Swing Radius	5,273 mm

## SERVICE CAPACITIES

Fuel Tank	965 L
Engine Oil	52 L
Cooling System	45.5 L
Hydraulic Reservoir	425 L
Hydraulic System Total	600 L

## HYDRAULIC SYSTEM

Main Pumps Total Flow	2×510 L/min
Relief Pressure, main	35 MPa
Relief Pressure, boost	37.3 MPa

### Guangxi Liugong Machinery Co., Ltd.

No. 1 Liutai Road, Liuzhou, Guangxi 545007, PR China  
T: +86 772 3886124 E: overseas@liugong.com  
www.liugong.com

Specifications and designs are subject to change without notice. Machines shown may include optional equipment. Liugong standard and optional equipment may vary from region to region. Please consult your Liugong dealer for information specific to your area. Engine power kW is converted to horsepower (1 kW=1.3596 ps and 1 kW=1.3410 hp) in this file.

10/2025 Designed by LiuGong  
Replace the previous versions of 07/2025