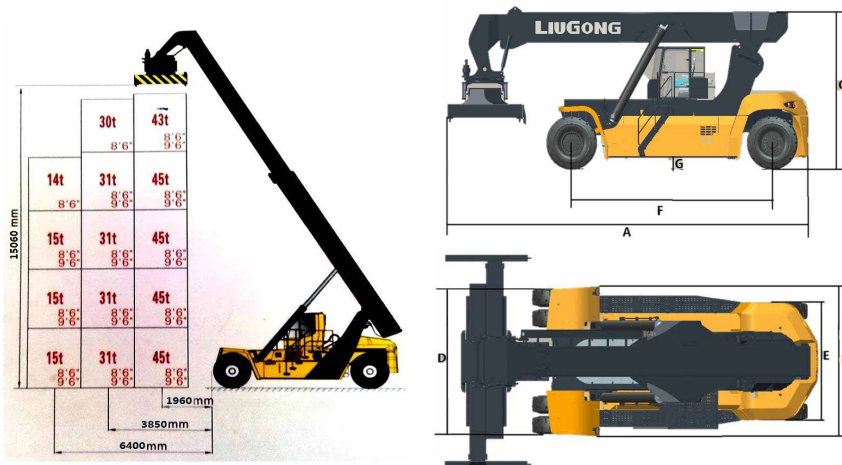


SPECIFICATION

General	Model		1			CLG2450
	Power Type		2			Diesel
	Rated Capacity		3		kg	45,000
	Service Weight		4		kg	73,500
Capacity	Extend Distance / Max. Capacity	The first row	5		mm/kg	1,960 / 45,000 ( 8" 6' 4 layer ) , 42,000 ( 5 layer )
		The second row	6		mm/kg	3,850 / 32,000(4 layer) , 30,000 ( 8" 6' 5 layer )
		The third row	7		mm/kg	6,400 / 16,000
Dimension	Max. Lifting Height		8		mm	15,060
	Max. elevation angle of lazy arm		9		deg	59
	Overall Length		10	A	mm	11,680
	Overall Width		11	B	mm	9,050 / 4,260
	Overall Height		12	C	mm	4,745
	Wheelbase		13	F	mm	6,500
	Tread Width ( front / rear )		14	D / E	mm	3,032 / 2,835
	Turning Radius		15		mm	8,700
Performance	Ground Clearance		16	G	mm	300
	Travel Speed ( unloaded / loaded )		17		km/h	25 / 15
	Max. Gradeability / Max. Drawbar Pull		18		%/KN	25 / 310
System	Engine	manufacturer	19			Cummins
		model	20			QSM11
		type	21			Electronic injection
		displacement	22		liters	11
		rated power	23		kw/rpm	261 / 2,000
	Transmission	max. torque	24		N-m/rpm	1,830 / 1,400
		manufacturer	25			ZF
		model	26			5WG261
		type	27			Hydraulic transmission
		control type	28			Powershift
		gears ( front / rear )	29			5/3



Guangxi LiuGong Machinery Co.,Ltd.  
No. 1 Liutai Road, Liuzhou, Guangxi.  
545007

PR China

T: +86 0772 3886124

E: overseas@liugong.com

www.liugong.com

Like and follow us:



# CLG2450

REACH STACKER

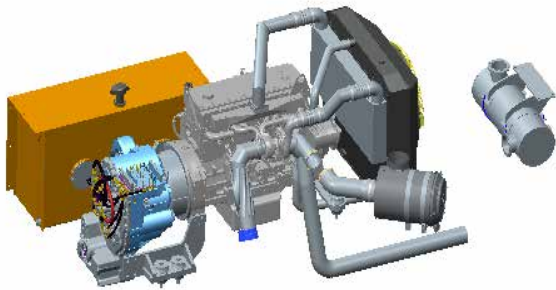


TOUGH WORD. TOUGH EQUIPMENT.

# PRODUCT FEATURES

## HIGH EFFICIENCY AND ENERGY SAVING

- Use low speed and large torque engine
- Excellent dynamic matching
- Hydraulic system use load sensitive variable system and energy-efficient



## HIGH COMFORTABILITY

- Clearly display device
- LED warning light
- Standard configuration air-conditioner and comfortable and reliable seat

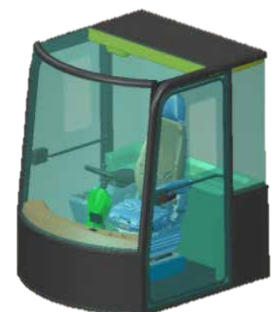


## HIGH OPERABILITY

- Use world-class operation layout, and industry first-class man-machine Ergonomic plan
- Minor diameter steering wheel, lower arm fatigue.
- The LUDV hydraulic technique is adopted to make the operation more accurate.

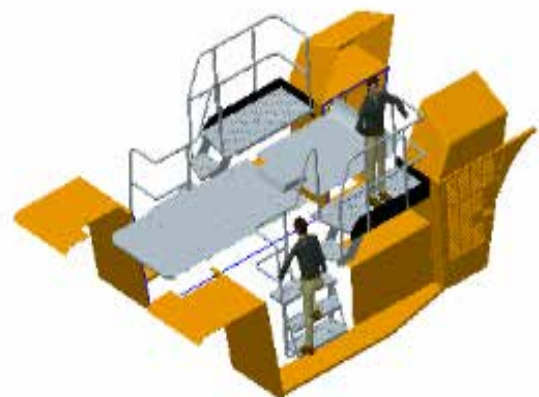
## EASY MAINTENANCE

- Open-type frame
- Wide open-angle side-door
- Removable cab
- Commodious service space



## HIGH EFFICIENCY AND ENERGY SAVING

- Energy-saving LED lighting
- Powerful variable pump
- Tire pressure sensor
- Start/halt function, saving 10% fuel oil.





## STANDARD CONFIGURATION

- Engine Electronic Control
- Electric proportional temperature control water cooling system
- Brake oil radiator
- Hydraulic drive (with torque converter)
- Gear output clutch
- Electric control shift
- Automatic gear shifting
- CAN-Bus Communication
- No wheel rim
- Control valve electric proportional servo control
- Control valve balance control
- Electric proportional temperature control hydraulic oil cooling
- Reverse Sensor
- Steering wheel position display
- Steering lights automatically turn-off
- Cold and warm air conditioner
- Overload protection
- Slope lifting prohibition
- Steering wheel protection
- Turning speed-limit

## OPTIONAS

- Hanger camera
- Backup camera
- Multi - image switching LCD screen
- Machine vision

