



## CSL THAMES

### Administrative Details

Type of vessel	-	Belt Self-unloader
Flag	-	Malta
IMO No.	-	9440447
Built	-	2009
Class	-	ABS

### Hold Characteristics

Hold/Hatches	-	7 holds / 7 hatches
Hold capacity	-	28,277 cbm
Length of Boom	-	90,00 m
Max outreach	-	77,00 m
Discharge Rate	-	Upto 2,500 T/Hr

### Vessel's Characteristics

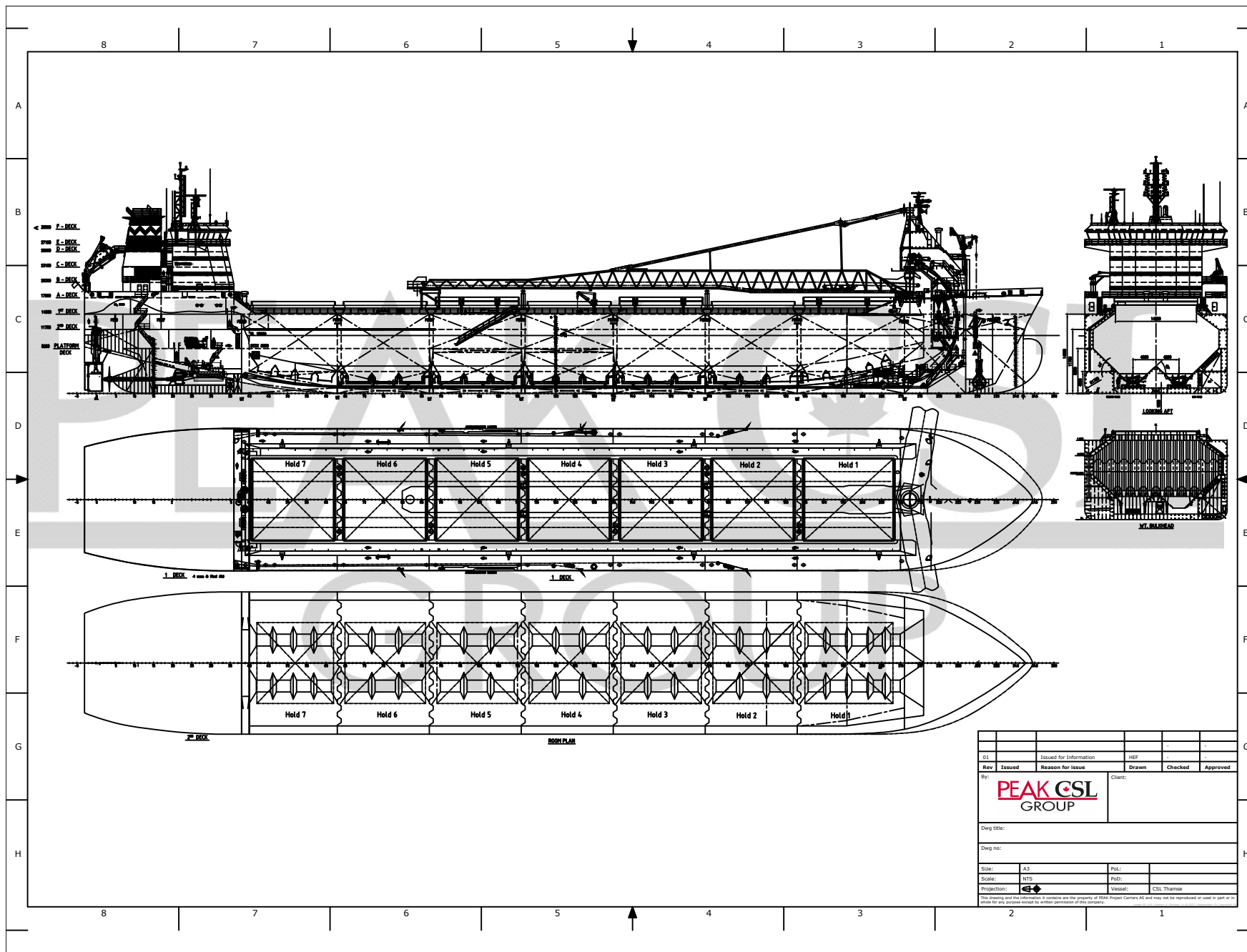
Gross tonnage (GT)	-	19,538 T
DWT	-	29,982 T
LOA	-	175,00 m
Beam moulded	-	26,00 m
Max summer draft	-	10,63m
Thruster	-	1 fwd



*All details are given in good faith, believed to be correct but without guarantee*

**Peak CSL Group AS**

+47 55 53 52 00

chartering@peakgroup.no



01		Issued for Information	HEF		
Rev	Issued	Reason for Issue	Drawn	Checked	Approved
By:			Client:		
Dwg title:					
Dwg no:					
Size:	A3	Plot:			
Scale:	HTS	Plot:			
Projection:		Vessel:	CSL Thamsø		
This drawing and the information it contains are the property of CS&S Project Carriers AS and may not be reproduced or used in part or in whole for any purpose except by written permission of CS&S Group.					