

The SNAP-PY Trial



**Finding the Best Treatments for
Patients with Staph aureus Infections**



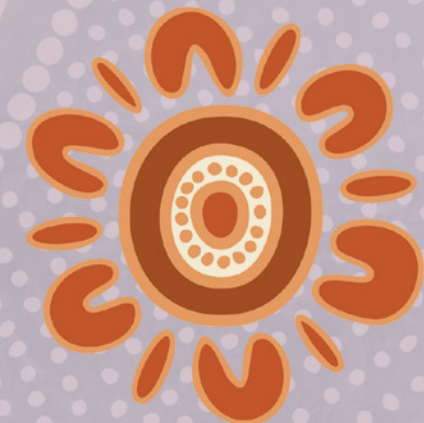
What's a Staph aureus Infection?



Staph is a germ or a bug that normally lives on your skin or in your nose.

When you get a cut or a scratch sometimes this germ can get into your bloodstream and make you very sick!

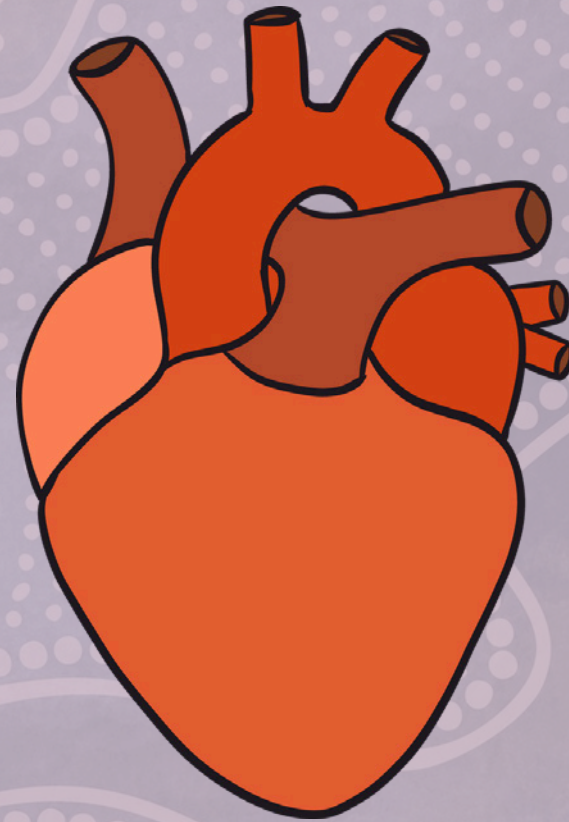
This leads to a Staph aureus bloodstream infection which means these germs have made even more germs in your body!



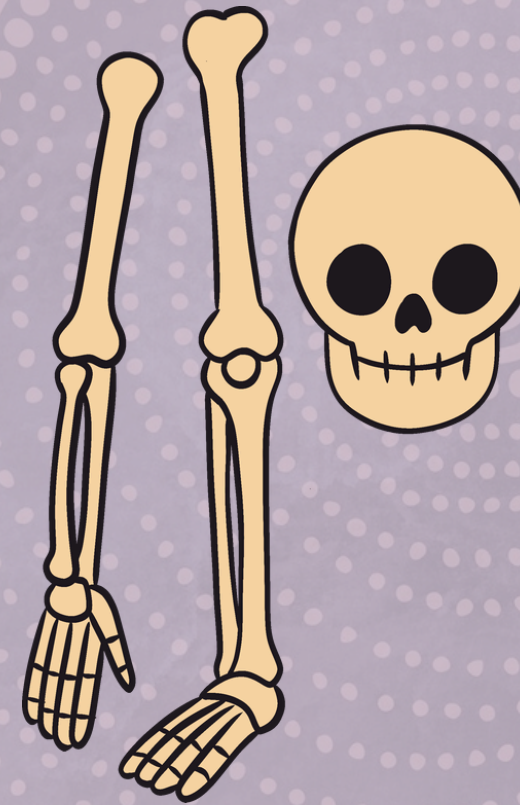
What part of your body can it affect?



Your Lungs



Your Heart



Your Bones & Joints



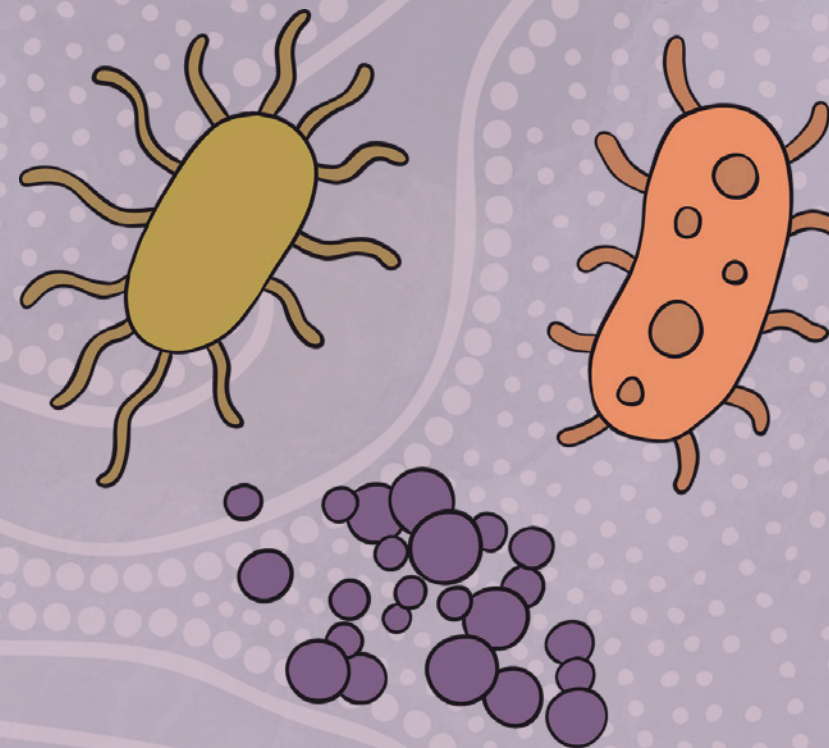
Your Muscles

How many types are there?

There are three types of Staph aureus blood stream infections:

Methicillin-susceptible
Staph aureus which is
also called MSSA

Penicillin-susceptible
Staph aureus which is
also called PSSA



Methicillin-resistant
Staph aureus which
is also called MRSA

This classification affects which antibiotic is chosen for treatment.

What is the Purpose of this Trial?

The SNAP trial will test a range of antibiotic treatments for Staph aureus with the aim of improving outcomes for patients.



What does the trial involve?

There are 2 different parts to the trial, each part is called a domain.

Adult Participants

Backbone Domain: MRSA

Early Oral Switch: You may switch to an oral antibiotic after 7 days of treatment

PET Scan



Child Participants

Backbone Domain: MRSA, PSSA and MSSA

You will then be randomly allocated to different treatments in these 'domains'



The scientists are developing new domains so there may be more to choose from in the future.

So what does taking part in this trial involve?



- You will be asked to sign a consent form.
- We will collect some information (like blood test results) from your child's medical records.
- Your child will be followed up for 90 days from the time they start treatment.
- We may collect information from you and your child by telephone on Days 28, 42, and/or 90.
- Taking part in the trial doesn't cost you anything. All medications, tests and medical care for your child to be in the trial is *free* of charge.

Important things to note

If you need an interpreter, please let us or your Doctors and/or Nurses know.

It is completely okay if you decide not to participate, *all care will be of a high standard.*

If you do take part in the trial, you/your child can withdraw from the trial at anytime without a reason!

All medicine can make you feel unwell and yuk at the start. You may feel yuk in the tummy, or have runny poo - it's important to share this with your family and the Nurses and Doctors.



SNAP Artwork & Illustrations by:
Kelli Savietto.

Kelli is a graphic designer based in Boorloo (Perth), she draws on her Nyikina and Yawuru heritage from the Kimberley region of Western Australia.

Kelli is passionate about Indigenous representation, and specialises in brand identity, publication design, and illustration. Through Kelli's artwork, she brings her clients' stories to life, weaving cultural narratives that resonate and connect.
kellisavietto.com