

Project Details

Name:

Location:

Specifier:

Date:

Additional Accessories: Power Input Kit Bumpers Power Supplies Controls AG Roller Silicone

Part Number Specification | Single Color White

Model	Voltage	Color (check box)	Sheet Size
AG2.1 - Auragami Gen 2	24 - 24VDC Constant Voltage	27 - 2700K	1224 - 12in x 24in
		30 - 3000K	
		35 - 3500K	
		40 - 4000K	
		50 - 5000K	

Example: AG2.1-24-50-1224. Customizable options available. See last page for full details.



Auragami Gen 2.1 (AG2.1)

Second Generation Flexible Light Sheet

Single Color White

Product Description: The second generation light sheet delivers several new innovations to the category. The industry's most advanced light sheet delivers unparalleled performance, reliability, and ease-of-use.

Highlights

- Available in five single color white temperatures
- New and improved IP67 connectors, cut lines, and quad bumpers for material support
- IP67 Rated for wet locations with newly engineered polyimide coating
- Cuttable down to a single LED or LED group while maintaining UL Listing
- Easy installs with plug-in-play light sheet connections
- Patented design offers a variety of exclusive innovations



Specifications | *Listed per full (12x24") light sheet.*

Input Voltage	24VDC Constant Voltage
Power Consumption	17.2 watts (8.6W/ft²)
Color Temperature	2700K, 3000K, 3500K, 4000K, 5000K
CRI	Up to 95+
Light Output	1,720 lumens
Efficiency	100 lumens per watt
LED Information	Type: SMD-2835 LEDs. Count: 512 LEDs. Beam angle: 120°
Wires	20AWG 2-wire (grey striped wire +)
Connections	IP67 premium grade terminals and plug-in sheet connectors.
Mounting	Adhesive backing and/or mechanical fasteners through precut mounting holes.
Temperature	Operating: -22° to 122°F. Working: 93°F
Surface Temperature	LED: 97°F. PCB: 90°F. Resistor: 93°F (Measured at ≥2 hours of operation).
Environment	IP67 - wet or dry locations
Dimensions	12 x 24in (1 x 2ft) / UL Listed field cuttable
Coverage	2ft² (1x2ft)
Maximum Run	Connect up to 5 full light sheets (86W) / 10ft² per Class 2 guidelines
Cut / Fold Line Spacing	0.75in / every LED
Weight	0.65lbs / 10.4oz / 295g
Rated Life	50,000+ hours
Warranty	5-year warranty (view terms online at evo-lite.com)

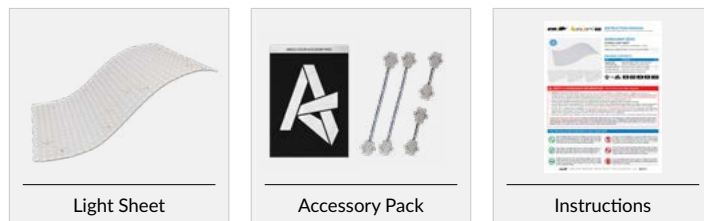
Power & Controls

Compatible with all control protocols via associated power and control components. Quality tested for low-end light output consistency across all LEDs (100-0% dimming with tight ANSI bin control).

Class 2 & UL Compliance

Use Class 2 power supplies with a maximum power output of 96W (per channel/ circuit) to retain UL Class 2 Listing compliance. Best practices include allowing headroom for power supply longevity.

Packaging Contents



Complete Your System | [View ordering section](#)



Technical drawing of a 6' x 3' grid with 0.75' spacing and 12 circular cutouts. The grid is composed of 8 columns and 8 rows of squares. The spacing between the centers of the squares is 0.75' (19.5mm). The total width is 6' (152.4mm) and the total height is 3' (76.2mm). There are 12 circular cutouts, each with a diameter of 0.75' (19.5mm). The cutouts are located at the intersections of the grid lines, specifically at the following coordinates (row, column) starting from the top-left: (1, 1), (1, 3), (1, 5), (1, 7), (3, 2), (3, 4), (3, 6), (5, 1), (5, 3), (5, 5), (7, 2), and (7, 4). The drawing includes dimension lines and labels for the grid size, spacing, and cutout diameter.

Figure 1 illustrates the dimensions of the 1000 Series device in four views:

- Top view with cover:** The overall width is 0.75" (19mm).
- Top view without cover:** The overall width is 0.75" (19mm). The height of the device body is 0.43" (11mm). The height of the cover when closed is 0.28" (7mm).
- End view with cover:** The height of the device body is 0.43" (11mm). The height of the cover when closed is 0.28" (7mm).
- Side view with sheet connector:** The height of the device body is 0.36" (9.2mm).

0.71" (18mm)

48" (1220mm)

0.71" (18MM)

0.51" (12.9MM)

Ordering | Single Color White

Model	Voltage	Color	Sheet Size
AG2.1 - Auragami Gen 2	24 - 24VDC Constant Voltage	27 - 2700K	1224 - 12in x 24in
		30 - 3000K	
		35 - 3500K	
		40 - 4000K	
		50 - 5000K	

Example Part Number

AG2.1	—	24	—	35	—	1224
Model		Voltage		Color Temp		Sheet Size

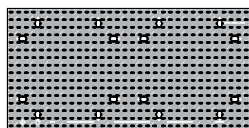
Accessories

ITEM	PART NUMBER	DESCRIPTION
Single Color Power Input Kit (Required)	AG2-24-SC-PIK	Powers one 24VDC Class 2 circuit (86W / 5 full light sheets). Includes (1) 48" single color power input cable, (2) Wago splicing connectors, and (4) wire management clips.
Light Sheet Quad Bumpers	AG2-075-047-QSB-P08	(8) Light Sheet Quad Bumpers for single color and tunable white light sheets.
Short Sheet To Sheet Connectors	AG2.1-24-SC-SCP	(4) Additional Single Color Short Sheet To Sheet Connectors.
Long Sheet To Sheet Connectors	AG2.1-24-SC-LCP	(4) Additional Single Color Long Sheet To Sheet Connectors.
Auragami Installation Roller	AG1-RLR-EVO	Specially designed foam roller assists in light sheet mounting. Safely mount light sheets without damaging terminals or LEDs.
Electronic Grade Silicone	SI-388CL-EVO	Acid-free electronic grade silicone may be used to supplement cut edges and connection terminals

Suggested Power Options

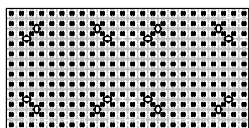
ITEM	PART NUMBER	DESCRIPTION
24V, 5-IN-1 Dimmable LED Driver (1 circuit of 96W)	PS-5N1-1C2496-EVO	24VDC 5-IN-1 Dimmable LED Driver. Compatible with most control protocols: Triac / Phase, 0-10V, 1-10V, Potentiometer, and 10V PWM. 1 circuit of 96W.
24V, 5-IN-1 Dimmable LED Driver (2 circuits of 96W each)	PS-5N1-2C24192-EVO	24VDC 5-IN-1 Dimmable LED Driver. Compatible with most control protocols: Triac / Phase, 0-10V, 1-10V, Potentiometer, and 10V PWM. 2 circuits of 96W each.
24V, 5-IN-1 Dimmable LED Driver (4 circuits of 96W each)	PS-5N1-4C24384-EVO	24VDC 5-IN-1 Dimmable LED Driver. Compatible with most control protocols: Triac / Phase, 0-10V, 1-10V, Potentiometer, and 10V PWM. 4 circuits of 96W each.

Also Available From Evo-Lite



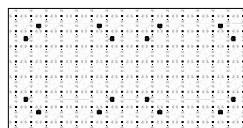
TUNABLE WHITE

Adjustable white from warm 1800K to cool 6500K



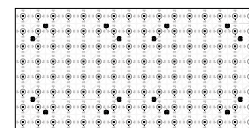
RGBW

Billions of colors + dedicated 5000K white diodes.



AURAGAMI BASIC

2700K, 3000K, 3500K, 4000K, 5000K, TW, RGBW



AURAGAMI BASIC WITH LENS

2700K, 3000K, 3500K, 4000K, 5000K, (175° lens)

Auragami Customization Options

All Auragami customizations maintain the UL Listing. Minimum order may apply.

- Voltage
- Power/efficiency/brightness
- Specific color temperatures
- IP Ratings
- Custom sizes/shapes
- LED pitch and placement
- PCB material type, pre-cut sheets
- Pre-mounted to quick install substrates

Custom Power Option Examples

Power (W/ft²)	Light Output (lm/ft²)	Total Sheet lumens (2ft²)
8.6	860	1,720
6.45	645	1,290
4.3	430	860
2.15	215	430

